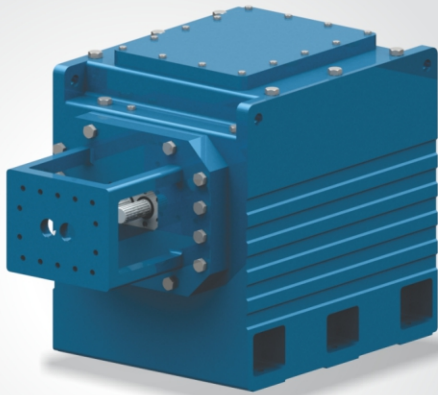




AJS SERIES

» Twin Screw Gearbox Co-rotating



The AJS series co-rotating twin screw gearbox is designed and sized accordingly using industry standards. The gearbox of this series has a compact construction, the speed is reduced while the required torque is created in the single-stage helical housing. This torque is transmitted in the distribution gearbox to the two co-rotating output shafts. The axial forces coming from the extrusion process are absorbed by thrust bearings inside the thrust bearing housing. These gearbox are driven directly by the motor.

Technical Data Overview

Rated Torque	Upto 2907 Nm per output shaft
Transmission	$i = 2.5 - 5$
Power	Up to 370 Kw
Center Distance	20.5 - 78 mm
Input Speed	1500
Type	AJS

» Input Option



Solid Input Shaft

» Output Option



Twin Spline Shaft

TECHNICAL OVERVIEW

The housing of gearbox has strong structure design, which can be operating under high torque demand and is made of high quality nodular cast-iron.

The gears are design according to ISO 6335 have profile correction and optimized for highest load capacity. The gear of primary unit are case hardened and are profile ground to quality DIN 5 to ensure smoothness of running and low vibration. The high gear contact ratio ensures a low noise level in these gearboxes. The shaft and the toothed wheels of the distribution gear unit are made of high-quality special steel with excellent tensile strength.

The bearings used are cylindrical roller bearings and thrust bearings of 294.. Series along with combination of thrust bearing are used to absorb highest thrust forces from the extrusion process.

The lubrication of these gearboxes is of forced type by means of lubrication unit. All gears and bearings are fed with correct oil quantity from the distribution system of lubrication unit. The housing of reducer act also as oil tank. It provide with filler cap with breather, a drain plug and a level indicator. A cooling system is provided for oil cooling.

Cylinder and screw connections according to customer requirements

On request we can also supply the following:

- Lubrication system with oil filter
- Monitoring of temperature, pressure or rate of flow Level switch
- Monitoring of the screw speed
- Torque measurement
- Load cells to measure back pressure forces



**ADVANCED
ENTERPRISES**



AJS SERIES

» Twin Screw Gearbox Co-rotating

TECHNICAL DATA											
Size	CD	Input Speed	300		400		500		600		Axial Force Per Shaft (kN)
			P1	T2	P1	T2	P1	T2	P1	T2	
AJ-20	20.5	1500	-	-	-	-	5.1	47	5.7	47	8
AJ-26	26	1500	-	-	7.2	81	8.6	80	10.3	79	11
AJ-28	28	1500	-	-	9	104	11	103	13	102	15
AJ-31	31	1500	-	-	16	186	19	183	23	181	15
AJ-38	38	1500	-	-	31	355	39	350	45	348	28
AJ-42	42	1500	-	-	31	355	39	350	45	348	28
AJ-48	48	1500	45	673	57	670	69	658	81	650	45
AJ-52	52	1500	45	673	57	670	69	658	81	650	45
AJ-54	54	1500	45	673	57	670	69	658	81	650	45
AJ-60	60	1500	75	1060	98	1135	120	1125	142	1106	56
AJ-76	76	1500	192	3000	256	2985	320	2940	370	2907	113
AJ-78	78	1500	192	3000	256	2985	320	2940	370	2907	113

ADVANCED ENTERPRISES

Industrial Gears & Gearbox Manufacturers

Email : info@advancedenterprises.in, **Website :** www.advancedenterprises.in