



PACKSAFE INDUSTRIES

www.packsafeindustries.com



ABOUT US

A leader in bulk packaging was established in 2005 at RIICO Industrial Area, Bhiwadi, Rajasthan, an offshoot of M/s Shree Shyam Packaging Industries from 1996 at Mundka Industrial Area, Delhi.

We are now running our operations from 3 fully equipped facilities of respective sizes 4000, 2000, and 1000 square meters and having corporate office at New Delhi.



COST SAVINGS THROUGH VA/VE IDEAS:-

- with our long experience and engineering background we have always developed new and cost effective innovative solutions for our existing customers and hence always had an edge over our competitors.
- we can also give cost savings to your organization through our VA/VE ideas. Our existing customers have always benefited from our technical engineering skills.



MACHINERY & TOOLS

Machinery & Equipments:

- Saw Mills, Panel Saw, Cutting Machines, Material Handling with Forklifts, screw Compressor, Power Press, Automatic Nailing Machines,
- Fully Automatic Set Up for “**NAILLESS BOXES**” and a Printing Set Up for the same.



MACHINERY & TOOLS

STEEL PACKAGING

- MIG WELDING MACHINE
- PIPE CUTTING TOOL
- PUNCH PRESS/POWER PRESS
- SPOT WELDING MACHINE
- TIG WELDING
- CRC SHEET PROCESSING MACHINES

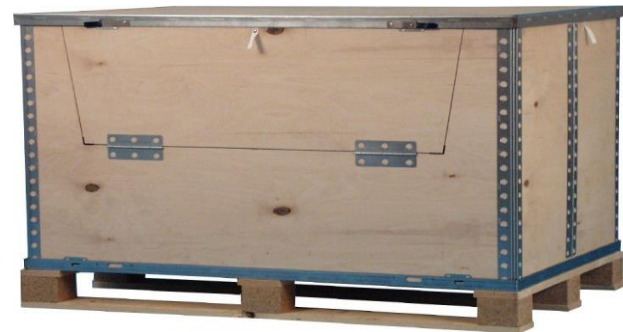


MANUFACTURING FACILITIES

- ***Wooden/Plywood Boxes, Crates, Pallets.***

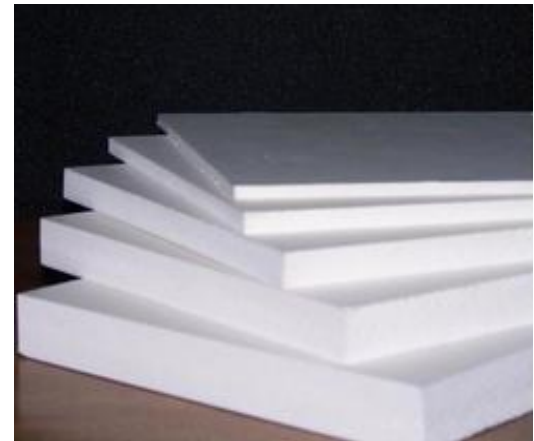


- ***Nailless boxes and foldable boxes***



MANUFACTURING FACILITIES

- ***Air Bubble Sheets, Rolls, Bags & Pouches***
- ***Thermacole (EPS) sheets or as per mould of any product.***

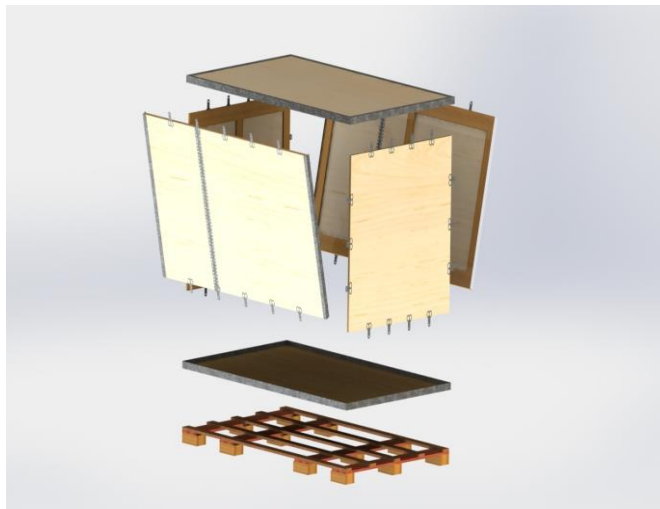


EXPORT PACKAGING SOLUTIONS

- *We have a high speed automated plant to manufacture “NAILLESS BOXES” with an Installed capacity of 500-1000 Boxes Per day..*



NAIL-LESS BOX



Steel packaging solutions



HYBRID PACKAGING

- We also supply high strength corrugation boxes in combination with plywood pallets and MDF Angel board provide HYBRID PACKAGING SOLUTION, specially designed as per your requirements



HYBRID PACKAGING



Quality Check and Process flow

- *Raw Material Stage: - Appearance, Strength, Thickness, Bonding, Dimension*
- *In Process (Manufacturing line):- Dimension at each stages (Cutting and Fabrication)*
- *Finished goods: - All fixture are checked dimensionally as per design given by the customer/as per the drawing*



CUSTOMER LIST

- 1) India Yamaha Motors Pvt Ltd , Greater Noida ,since 1996
- 2)Hero Motocorp Ltd., Dharuhera Plant, Haryana ,since 2005
- 3)Hero Motocorp Ltd. Gurugram Plant, Haryana, since 2005
- 4) Suzuki Motorcycles India Pvt Ltd, Haryana, since 2006
- 5) Bry Air (Asia), Gurugram , Haryana, since 2017
- 6) Sikko Automotives Ltd., Bhiwadi , Rajasthan, since 2006
- 7) Uflex Limited, Engineering Division, Sector 60,Noida, since,2010
- 8) Nissin ABC Logistics India Pvt Ltd,Delhi, (Honda cars) since 2014
- 9) Harsha Engg . Ahmedabad,Gujrat, since 2017
- 10)Coslight India telecom pvt ltd, Una (himachal), since 2018
- 11)Modi-Hitech India Pvt ltd,Modipuram, Meerut, since 2018





THANK YOU

