

# **PRODUCT CATLOGUE**



# ABOUT US

Established in the year of 2000, we "VERIX ENGINEERS" are the leading, Manufacturer of an extensive array of Panel Lock, Panel Hinges, Panel Industrial Handle, Cable Drag Chain, Air Vent Grill, Rubber Grommets, Three Point Lock, Bakelite Knob, etc. We direct all our activities to cater the expectations of customers by providing them excellent quality products as per their gratifications. Moreover, we follow moral business policies and crystal pure transparency in all our transactions to keep healthy relations with the customers.

In order to execute our business operations in an organized manner, we have developed a sophisticated infrastructure facility that is spread across a vast area. Our infrastructure facility is installed with high-tech machinery and cutting-edge technologies. In order to sustain a conducive working environment, our infrastructure comprises various units like manufacturing, quality testing, warehousing & packaging, etc. Significantly supported by an expert team of professionals, they systematically carry out the entire business operations. Owing to the proficiency of our professionals, we have been able to constructively complete the goals of our organization. As a quality centric firm, we make certain our clients that products offered to them are checked on several quality parameters.

Under the guidance of our mentor "Mr. Rajiv Patel", we have become a professional and prominent organization in this domain. His vast industry experience and honourable trade policies help us to attain your organizational goals.

# WHY US

Owing to our expertise, we have been able to offer our customers with quality-assured range of products in varied specifications.

Owing to following reasons, we have been able to outshine others in this highly competitive market:

- High-quality products
- Skilled team of professionals
- Ethical business policies
- Easy payment modes
- Transparent dealings
- Wide distribution network
- Customized packaging

# OUR TEAM

Our workforce is the backbone of our organization, which enables us to meet our targets and goals efficiently. We recruit only the best professionals in the industry to work for our organization, so that they add value to the organization.

**The professionals who work in our organization are as follows:**

- Engineers
- Skilled technicians
- Researchers
- Quality inspectors
- Sales and marketing staff

All our professionals are highly experienced and have vast domain knowledge. They are well aware of the latest technologies that are to be incorporated in the manufacturing process. With their sincere efforts we are able to comprehend the exact requirements of our clients. This helps us catering products that are industry specific. Thus our team of professionals plays a major role in the success of our organization.

---

## PRODUCTION UNIT

---



# CERTIFICATIONS

ZERTIFIKAT • CERTIFICAT • CERTIFICADO • BELGESI • CERTIFICATE



## Certificate of Compliance

We hereby declare that the technical file of

### VERIX ENGINEERS

B-44 MARUTI ESTATE, 101, THIRAKHURA PATEL, G.D.C. VAPVA, PHASE I, DR. RATTEN DEN  
RD, VAPVA, AHMEDABAD 380015, GUJARAT, INDIA.

has been assessed & found to be in conformance with the provisions set forth by:

### RoHS Directive (2011/65/EU)

on certain hazardous substances in Electrical and Electronic Equipments.

PROJECT DESCRIPTION: ALUMINIUM PANEL LOCKS, PANEL KEYS, PANEL HANGERS, PANEL BRACKETS, BRACKET KEYS, KEYS, TIE BOLTS, TELEPHONE, INTERCOM, BELL CLAMP & SPARE PLATE.

Certificate No. **QACB7782**

Date of Initial Registration	21 <sup>st</sup> Oct 2022	Issue Date	21 <sup>st</sup> Oct 2022
1 <sup>st</sup> Surveillance on or before	21 <sup>st</sup> Oct 2023	Expiry Date	21 <sup>st</sup> Oct 2023
2 <sup>nd</sup> Surveillance on or before	21 <sup>st</sup> Oct 2024		





ZERTIFIKAT • CERTIFICAT • CERTIFICADO • BELGESI • CERTIFICATE



## Certificate of Compliance

We hereby declare that the technical file of

### VERIX ENGINEERS

B-44 MARUTI ESTATE, 101, THIRAKHURA PATEL, G.D.C. VAPVA, PHASE I, DR. RATTEN DEN  
RD, VAPVA, AHMEDABAD 380015, GUJARAT, INDIA.

has been assessed & found to be in conformance with the provisions set forth by the requirement of Directive Low Voltage Directive 2014/53/EU.

PROJECT DESCRIPTION: ALUMINIUM PANEL LOCKS, PANEL KEYS, PANEL HANGERS, PANEL BRACKETS, BRACKET KEYS, KEYS, TIE BOLTS, TELEPHONE, INTERCOM, BELL CLAMP & SPARE PLATE.

Certificate No. **QACB7781**

Date of Initial Registration	21 <sup>st</sup> Oct 2022	Issue Date	21 <sup>st</sup> Oct 2022
1 <sup>st</sup> Surveillance on or before	21 <sup>st</sup> Oct 2023	Expiry Date	21 <sup>st</sup> Oct 2023
2 <sup>nd</sup> Surveillance on or before	21 <sup>st</sup> Oct 2024		

# CE






**Government of India**  
Ministry of Commerce and Industry  
Bureaus of Export Control  
Office of the Additional Director General of Foreign Trade, Ahmedabad  
3rd Floor, HUDCO Bhuvan, Jhaveri Bhuvan Road, Navrangpura, AHMEDABAD

Importer-Exporter Code

This is to certify that **VERIX ENGINEERS** is licensed as Importer-Exporter Code (IEEC) ANQP199991 with details as follows:-

IEEC	ANQP199991
Import Unit IEC/IEP/IEAN	ANQP199991
IMP/IEE/IEEP/IEAN Name	VERIX ENGINEERS
Form of Import (Nature of Consignment)	Domesticship
IMP/IEE/IEEP/IEAN Date of Issue	09/09/2022
IMP/Registered Address	B-44 Maruti Industrial estate, phase-I, Rd. chakra ghat, G.D.C. Vapva, AHMEDABAD, AHMEDABAD, GUJARAT, INDIA
IMP/IMP/IEE/IEEP/IEAN Name of the Signatory	SHARAD RASHI PATEL
Director / Partner Details	Mobile number is 9896249122 or 9896249123 or 9896249124
IMP/IMP/IEE/IEEP/IEAN Branch Details	Factor office is 9896249122 or 9896249123 or 9896249124

Link to verify: <https://www.export.gov.in>

File Number: <https://www.export.gov.in>



Note: This is a system-generated certificate. Authenticity / Copied details of the IEC can be checked at [www.export.gov.in](https://www.export.gov.in) by clicking the QR and Filing Name under Services & View Any IEC Details. You can also authenticate the certificate by scanning the QR code.

ZERTIFIKAT • CERTIFICAT • CERTIFICADO • BELGESI • CERTIFICATE



## Certificate of Compliance

This is to certify that the Quality Management System of

### VERIX ENGINEERS

B-44 MARUTI ESTATE, 101, THIRAKHURA PATEL, G.D.C. VAPVA, PHASE I, DR. RATTEN DEN  
RD, VAPVA, AHMEDABAD 380015, GUJARAT, INDIA.

has been assessed and certified by Accredium and found to be in conformance with the requirements specified in our Quality Management System conformity:

### ISO 9001:2015

For the scope of  
MANUFACTURING PANELS, BRACKET ASSEMBLIES AND FABRICATION MATERIAL.

Certificate No. **QACB7781**

Date of Initial Registration	21 <sup>st</sup> Oct 2022	Issue Date	21 <sup>st</sup> Oct 2022
1 <sup>st</sup> Surveillance on or before	21 <sup>st</sup> Oct 2023	Expiry Date	21 <sup>st</sup> Oct 2023
2 <sup>nd</sup> Surveillance on or before	21 <sup>st</sup> Oct 2024		





# INDEX

<b>PRODUCTS</b>	<b>PAGE NO.</b>
<b>PANEL LOCK</b>	<b>01</b>
<b>LOCK ACCESSORIES</b>	<b>23</b>
<b>3 POINT LOCK</b>	<b>27</b>
<b>PANEL HANDLES</b>	<b>33</b>
<b>PANEL HINGES</b>	<b>39</b>
<b>AIR-VENT / FAN FILTERS</b>	<b>51</b>
<b>DRAG CHAIN</b>	<b>55</b>
<b>KNOB</b>	<b>57</b>
<b>BUS-BAR</b>	<b>59</b>
<b>GROMMENT</b>	<b>61</b>
<b>PVC YELLOW FERRULE</b>	<b>62</b>
<b>WIRE ACCESSORIES</b>	<b>63</b>
<b>OTHER ACCESSORIES</b>	<b>67</b>

**OUR MOST CONSUMABLES MANUFACTURING PRODUCTS**



# OUR MOST CONSUMABLES MANUFACTURING PRODUCTS





RLS 41

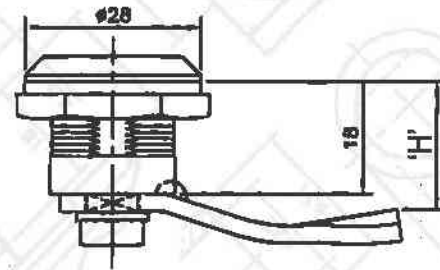
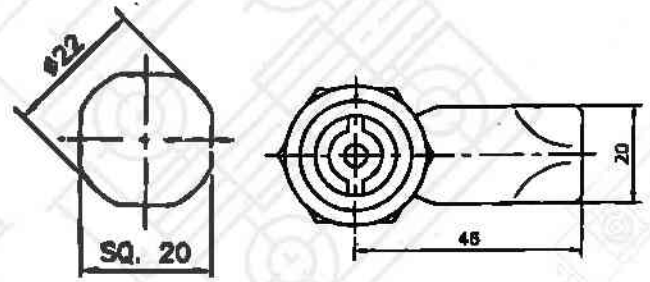


RLS 43



RLS 44

- **Material** : Polyamide Housing, MS Lever, Polyamide Nut, Polyamide Insert
- **Finish** : Matt Black



'H' = 20mm, 25mm, 30mm, 35mm, 40mm, 45mm, & 50mm

MODEL NO.	SPECIFICATIONS
RLS 41	Polyamide Pin Type Lock
RLS 43	Polyamide Triangle Type Lock
RLS 44	Polyamide Minus Type Lock



RLS 11



RLS 12

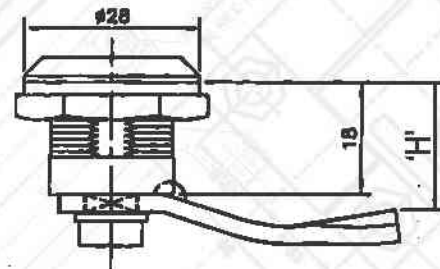
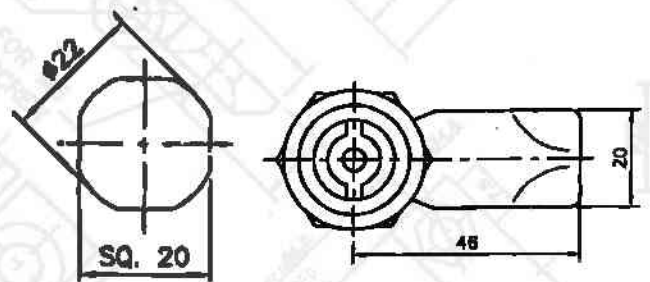


RLS 13



RLS 14

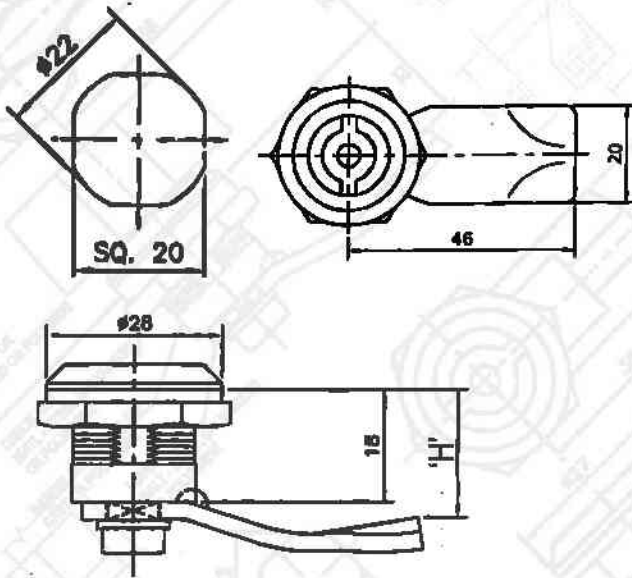
- **Material** : Die Cast Housing, MS Lever, MS Nut, Die Cast Insert
- **Finish** : Bright Chrome



'H' = 20mm, 25mm, 30mm, 35mm, 40mm, 45mm, & 50mm

MODEL NO.	SPECIFICATIONS
RLS 11	Die Cast Pin Type
RLS 12	Die Cast Square Type
RLS 13	Die Cast Triangle Type
RLS 14	Die Cast Minus Type





RLS 11-SS



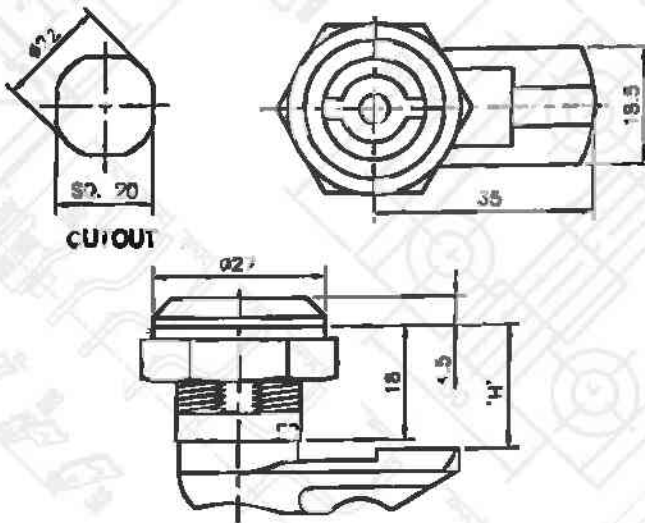
RLS 12-SS

RLS 13-SS

RLS 14-SS

- **Material** : SS Housing, SS Lever, SS Nut, SS Insert
- **Finish** : Bright Chrome

MODEL NO.	SPECIFICATIONS
RLS 11-SS	Stainless Steel - 304 Pin Type
RLS 12-SS	Stainless Steel - 304 Square Type
RLS 13-SS	Stainless Steel - 304 Triangle Type
RLS 14-SS	Stainless Steel - 304 Minus Type



RLS 41 P

Various Inserts available



- **Material** : Polyamide Housing, Polyamide Lever, Polyamide Nut, Polyamide Insert
- **Finish** : Matt Black

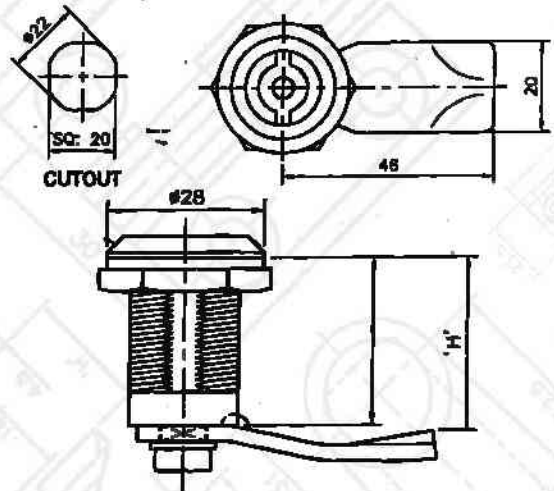
MODEL NO.	SPECIFICATIONS
RLS 41 P	Full Polyamide Pin Type Lock
RLS 43 P	Full Polyamide Triangle Type Lock
RLS 44 P	Full Polyamide Minus Type Lock



Various Inserts available



- **Material** : Die Cast Housing, MS Lever, MS Nut, Die cast Insert
- **Finish** : Bright Chrome



RLS 11 x H, RLS 12 x H, RLS 13 x H, RLS 14 x H  
'H' = 30mm, 40mm, 50mm

MODEL NO.	SPECIFICATIONS
RLS 11 x H	Die Cast Pin Type Lock
RLS 12 x H	Die Cast Square Type Lock
RLS 13 x H	Die Cast Triangle Type Lock
RLS 14 x H	Die Cast Minus Type Lock



RLS 45 x 30



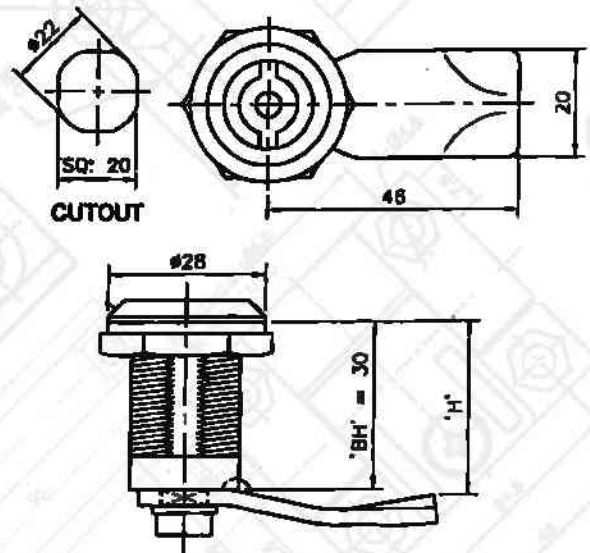
RLS 41 x 30

RLS 43 x 30

RLS 44 x 30

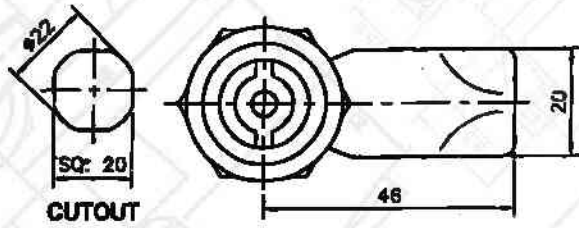
RLS 46 x 30

- **Material** : Polyamide Housing, MS Lever, Polyamide Nut, Polyamide Insert
- **Finish** : Matt Black

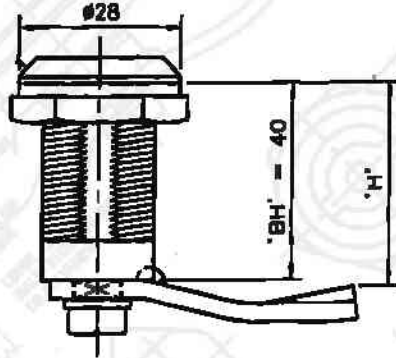


'H' = 30mm Long Body Lock

MODEL NO.	SPECIFICATIONS
RLS 41 x 30	Pin Type Insert 30 mm Long Body Lock
RLS 43 x 30	Triangle Type Insert 30 mm Long Body Lock
RLS 44 x 30	Minus Type Insert 30 mm Long Body Lock
RLS 45 x 30	Small Wing Type Insert 30 mm Long Body Lock
RLS 46 x 30	Big Wing Type Insert 30 mm Long Body Lock



CUTOUT



'H' = 40mm Long Body Lock

MODEL NO.	SPECIFICATIONS
RLS 41 x 40	Pin Type Insert 40 mm Long Body Lock
RLS 43 x 40	Triangle Type Insert 40 mm Long Body Lock
RLS 44 x 40	Minus Type Insert 40 mm Long Body Lock
RLS 45 x 40	Small Wing Type Insert 40 mm Long Body Lock
RLS 46 x 40	Big Wing Type Insert 40 mm Long Body Lock



RLS 45 x 40



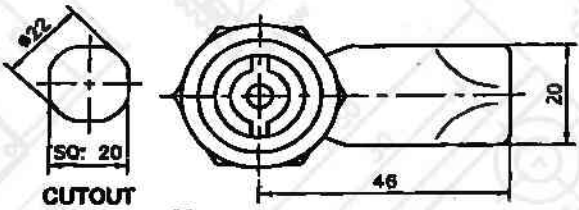
RLS 41 x 40

RLS 43 x 40

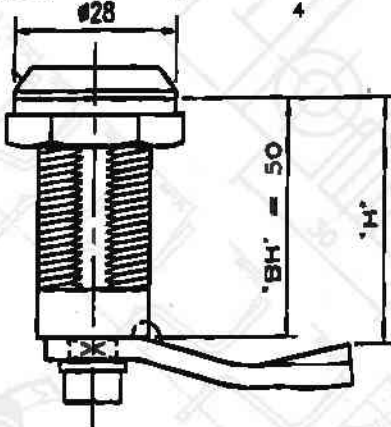
RLS 44 x 40

RLS 46 x 40

- Material : Polyamide Housing, MS Lever, Polyamide Nut, Polyamide Insert
- Finish : Matt Black



CUTOUT

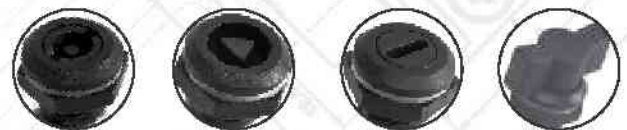


'H' = 50mm Long Body Lock

MODEL NO.	SPECIFICATIONS
RLS 41 x 50	Pin Type Insert 50 mm Long Body Lock
RLS 43 x 50	Triangle Type Insert 50 mm Long Body Lock
RLS 44 x 50	Minus Type Insert 50 mm Long Body Lock
RLS 45 x 50	Small Wing Type Insert 50 mm Long Body Lock
RLS 46 x 50	Big Wing Type Insert 50 mm Long Body Lock



RLS 45 x 50



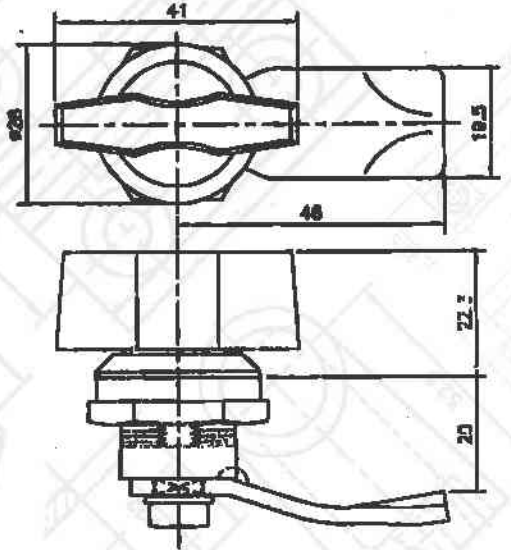
RLS 41 x 50

RLS 43 x 50

RLS 44 x 50

RLS 46 x 50

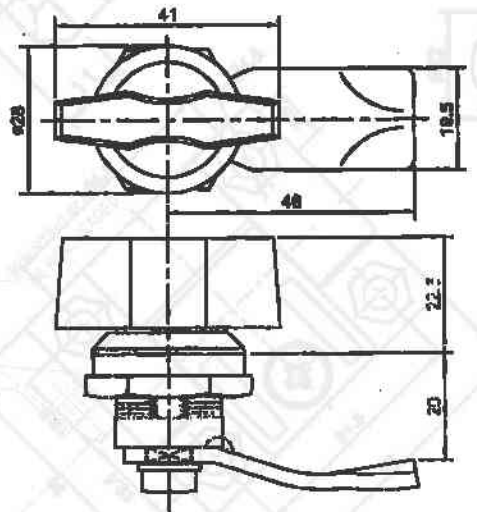
- Material : Polyamide Housing, MS Lever, Polyamide Nut, Polyamide Insert
- Finish : Matt Black


**RLS 45**


- **Material** : Polyamide Housing, MS Lever, Polyamide Nut, Polyamide Wing
- **Finish** : Matt Black

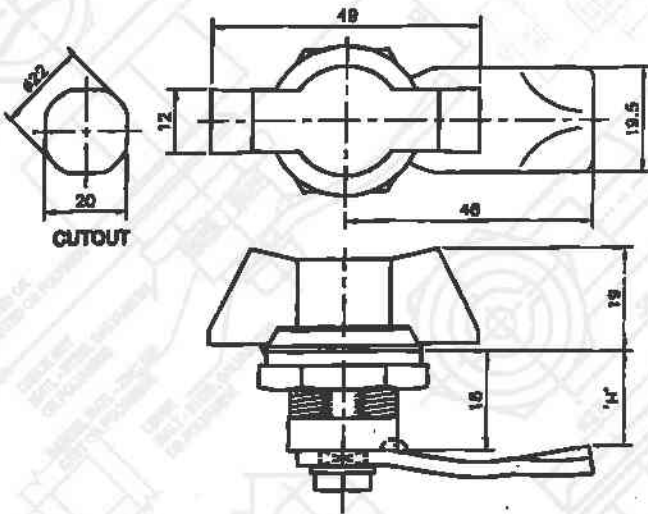
MODEL NO.	SPECIFICATIONS
RLS 45	Polyamide Small Wing Type


**RLS 15**

**RLS 25**


- **Material** : Die Cast Housing, MS Lever, MS Nut, Die Cast / Polyamide Wing
- **Finish** : Bright Chrome

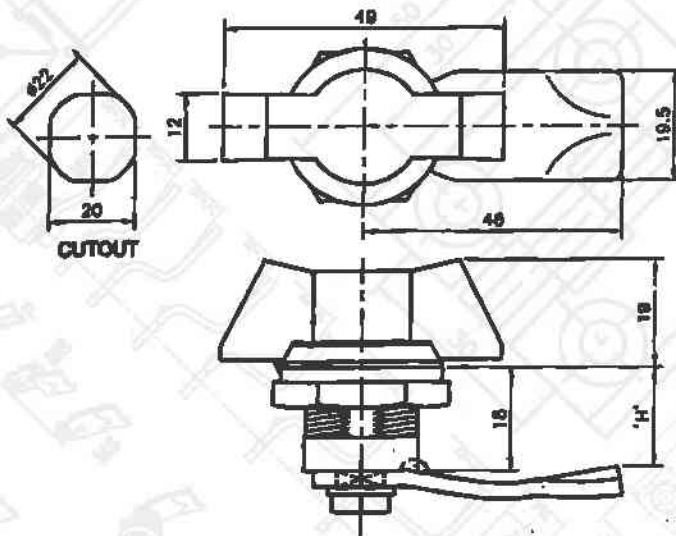
MODEL NO.	SPECIFICATIONS
RLS 25	Die Cast Body - Nylon Wing Type Lock
RLS 15	Die Cast Body - Die Cast Wing Type Lock



RLS 46

MODEL NO.	SPECIFICATIONS
RLS 46	Polyamide Big Wing Type Lock

- **Material** : Polyamide Housing, MS Lever, Polyamide Nut, Polyamide Wing
- **Finish** : Matt Black



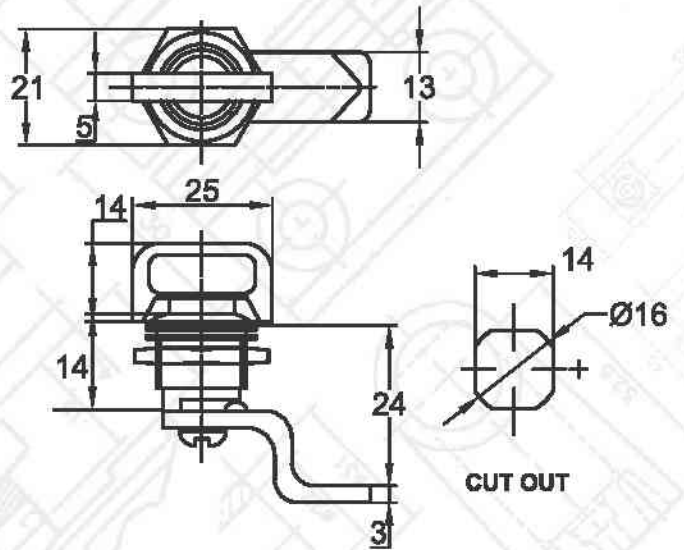
RLS 26

MODEL NO.	SPECIFICATIONS
RLS 26	Die Cast Body - Polyamide Big Wing Type Lock

- **Material** : Die Cast Housing, MS Lever, Die Cast Nut, Polyamide Wing
- **Finish** : Matt Black



RLS 15



- **Material** : Die Cast Housing, MS Lever, MS Nut, Polyamide Wing
- **Finish** : Bright Chrome

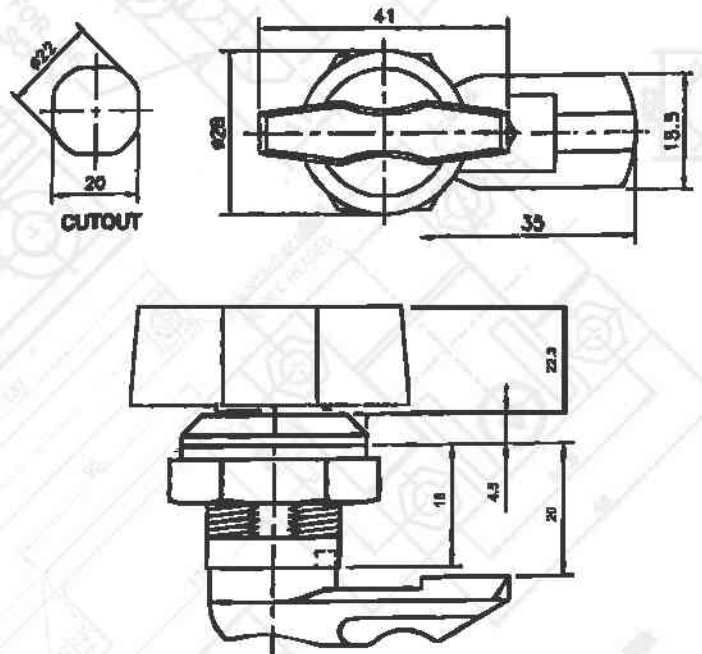
MODEL NO.  
RLS 15

SPECIFICATIONS  
Die Casting Body Polyamide Small Wing



RLS 45 P

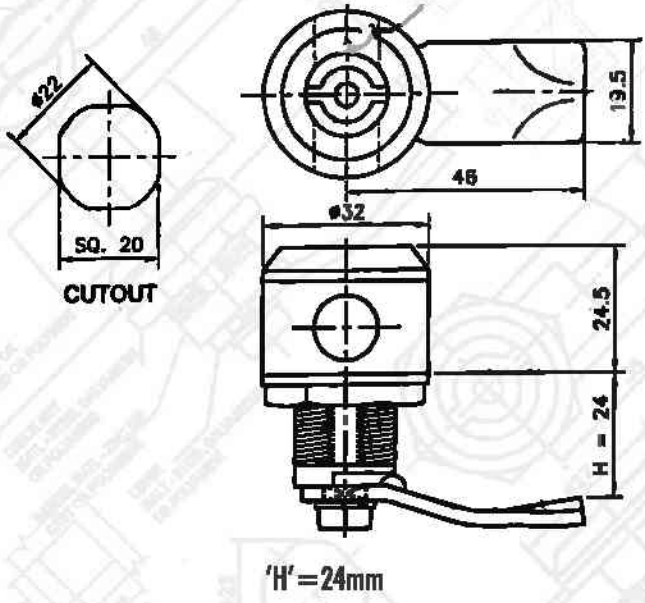
RLS 46 P



- **Material** : Polyamide Body, Polyamide Liver, Polyamide Insert
- **Finish** : Matt Finish

MODEL NO.  
RLS 45 P  
RLS 46 P

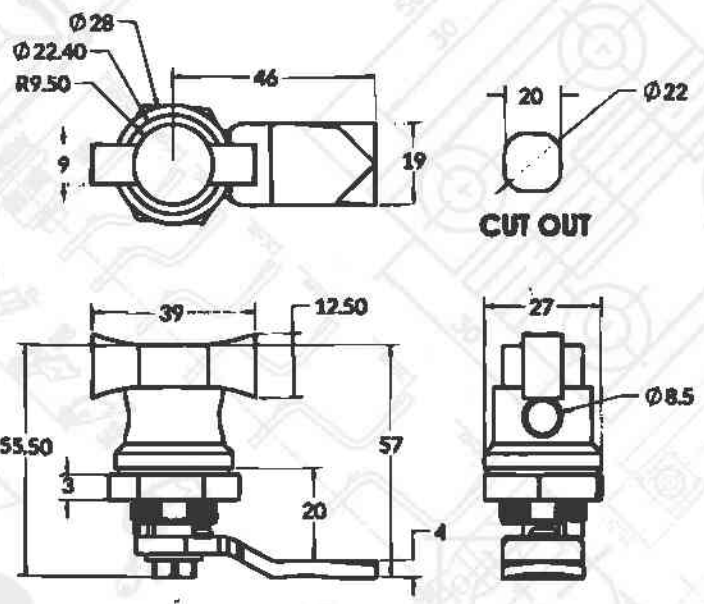
SPECIFICATIONS  
Full Polyamide Wing Lock  
Full Polyamide Big Wing Lock



RLS 41 Pad      RLS 43 Pad      RLS 44 Pad

- **Material** : Polyamide Housing, MS Lever, MS Nut, Polyamide Insert
- **Finish** : Matt Black

MODEL NO.	SPECIFICATIONS
RLS 41 Pad	Pad Type Lock Pin Type Insert
RLS 43 Pad	Pad Type Lock Triangle Type Insert
RLS 44 Pad	Pad Type Lock Minus Type Insert

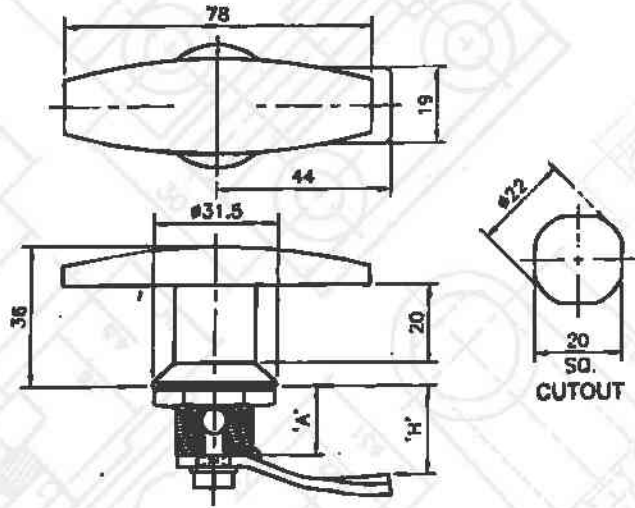


- **Material** : Polyamide Housing, MS Lever, MS Nut, Polyamide Wing
- **Finish** : Matt Black

MODEL NO.	SPECIFICATIONS
RLS 26 LS	Pad Type Lock Wing Type Insert



RLL 09

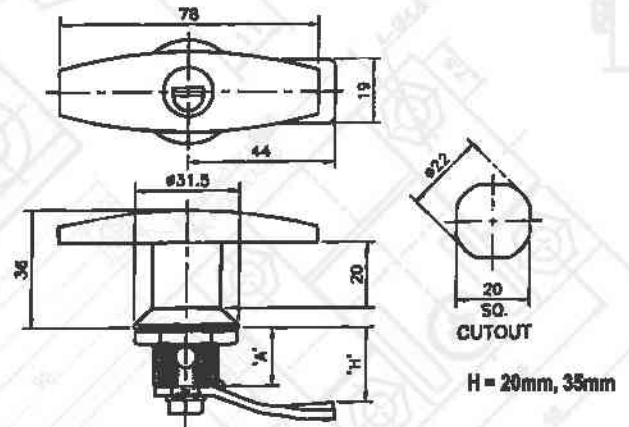


H = 20mm, 35mm

- **Material** : Polyamide Housing, MS Lever, Metal / Polyamide Nut, Polyamide Handle
- **Finish** : Matt Black

MODEL NO.  
RLL 09

SPECIFICATIONS  
T Handle Type Lock



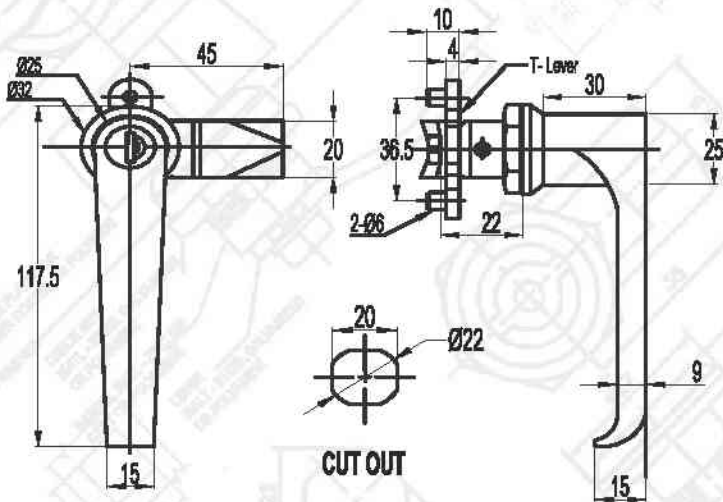
H = 20mm, 35mm

- **Material** : Die Cast Housing, MS Lever, MS Nut, Die Cast Handle
- **Finish** : Bright Chrome

MODEL NO.  
RLL 09 K-P  
RLL 09 K-C

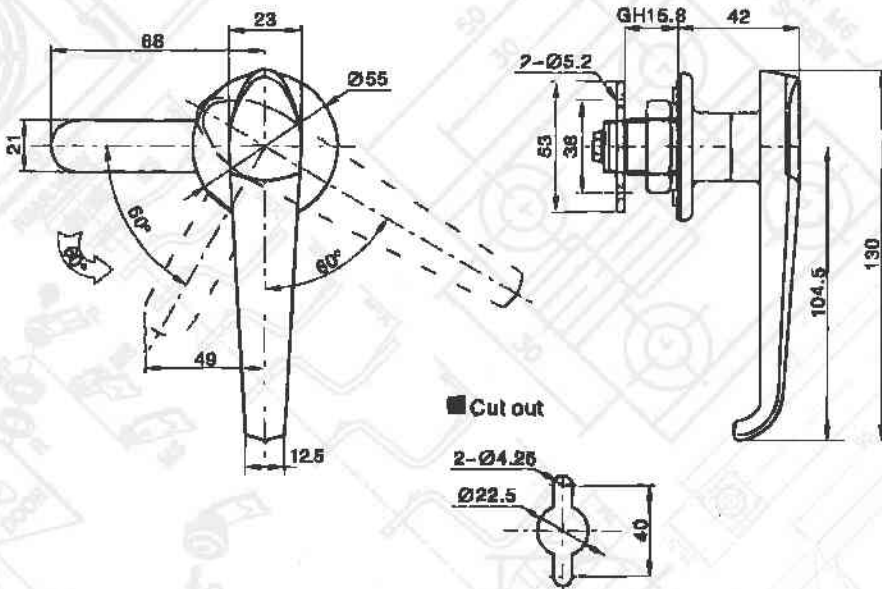
SPECIFICATIONS  
T-Handle - Die Cast with Key Powder Coating  
T Handle - Die Cast Chrome Plating with Key





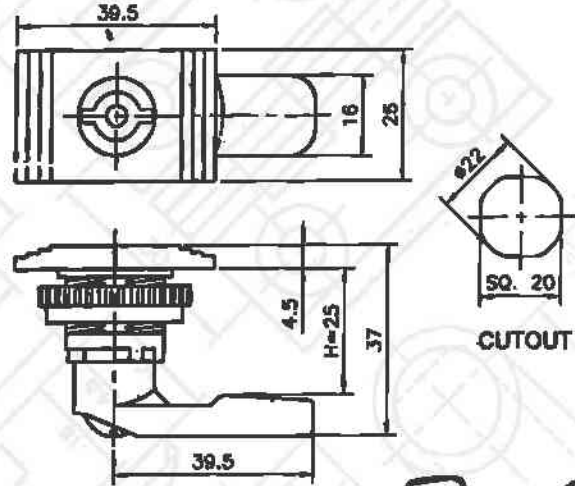
MODEL NO.	SPECIFICATIONS
RLL 05	L Type Zinc Die Casting Lock without Key
RLL 05 K	L Type Zinc Die Casting Lock with Key

- **Material** : Die Cast Housing, MS Lever, MS Nut, Die Cast Handle
- **Finish** : Matt Black



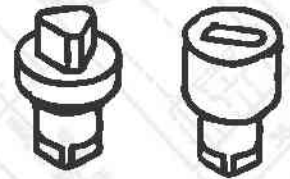
MODEL NO.	SPECIFICATIONS
MS 306 - 2 - 1	L Type Handle Lock with Key

- **Material** : Zinc Die Cast Body & Nut, Zinc Plating Cam
- **Finish** : Bright Chrome Plating



CUTOUT

Various insert available in Polyamide



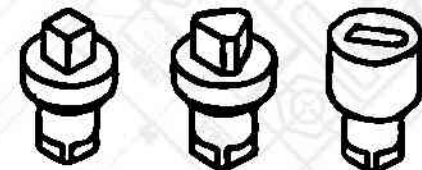
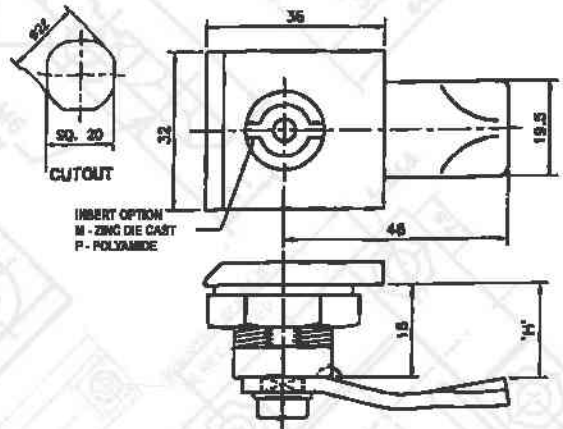
- **Material** : Polyamide Housing, Polyamide Lever, Polyamide Nut, Polyamide Insert
- **Finish** : Bright Chrome

**MODEL NO.**  
RLS 71-R

**SPECIFICATIONS**  
Nylon Lock Pin Type, Triangle, Minus, Insert



RLS 101

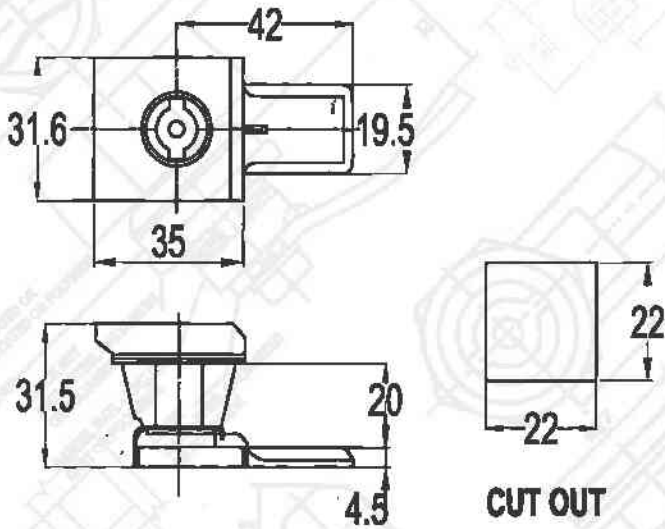


Various insert available in die Cast & Polyamide

- **Material** : Polyamide / Die Cast Housing, MS Lever, MS / Polyamide Nut, Die Cast / Polyamide Insert
- **Finish** : Bright Chrome / Matt Black

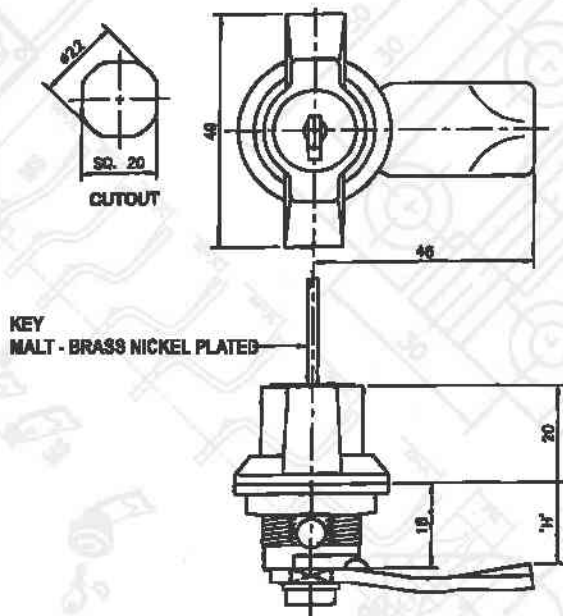
**MODEL NO.**  
RLS 101  
RLS 201  
ELS 301

**SPECIFICATIONS**  
Polyamide Housing with Die Cast insert  
Polyamide Housing with Polyamide insert  
Die Cast Housing with Die Cast Insert



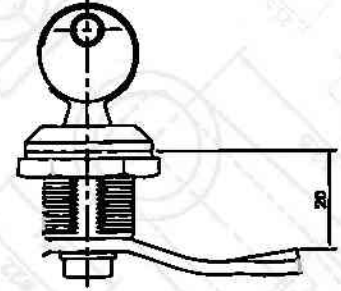
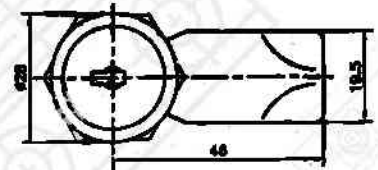
MODEL NO.	SPECIFICATIONS
RLS 11/R	Rittal Type Square Body Lock

- **Material** : Die Cast Body, Nut, MS Lever
- **Finish** : Matt Finish



MODEL NO.	SPECIFICATIONS
RLS 18	Big Wing with Key Type Lock

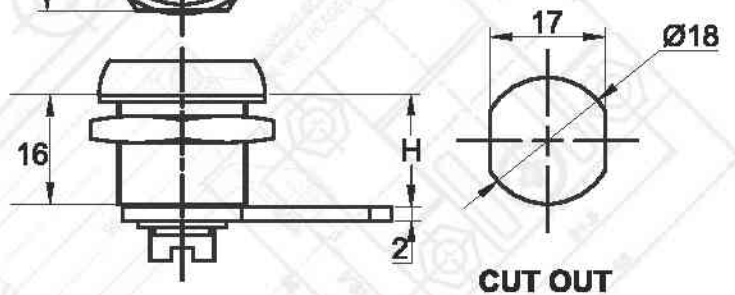
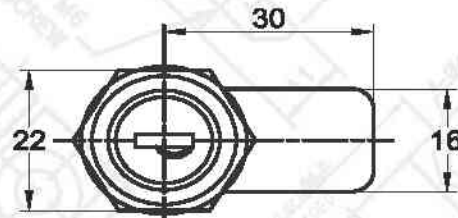
- **Material** : Die Cast Housing, MS Lever, MS Nut, Die Cast Wing
- **Finish** : Matt Black



- **Material** : Die Cast Housing, MS Lever, MS Nut, MS Key, Die Cast Insert
- **Finish** : Bright Chrome

**MODEL NO.**  
RLS 17

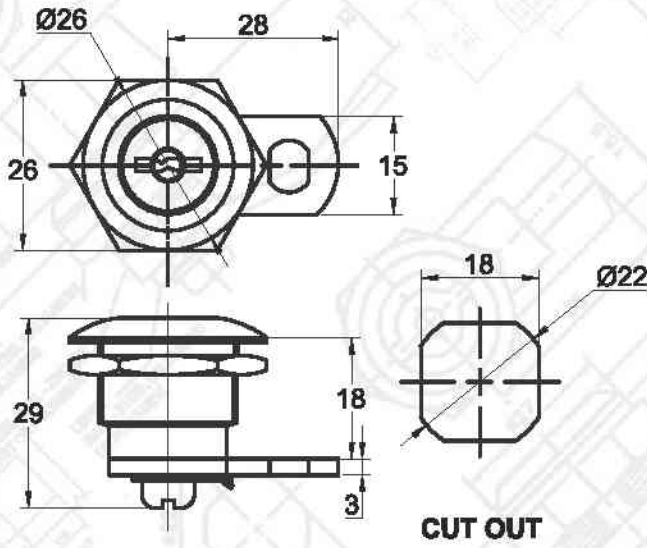
**SPECIFICATIONS**  
Key Type Lock



- **Material** : Die Cast Housing, MS Lever, MS Nut, MS Key, Die Cast Insert
- **Finish** : Bright Chrome

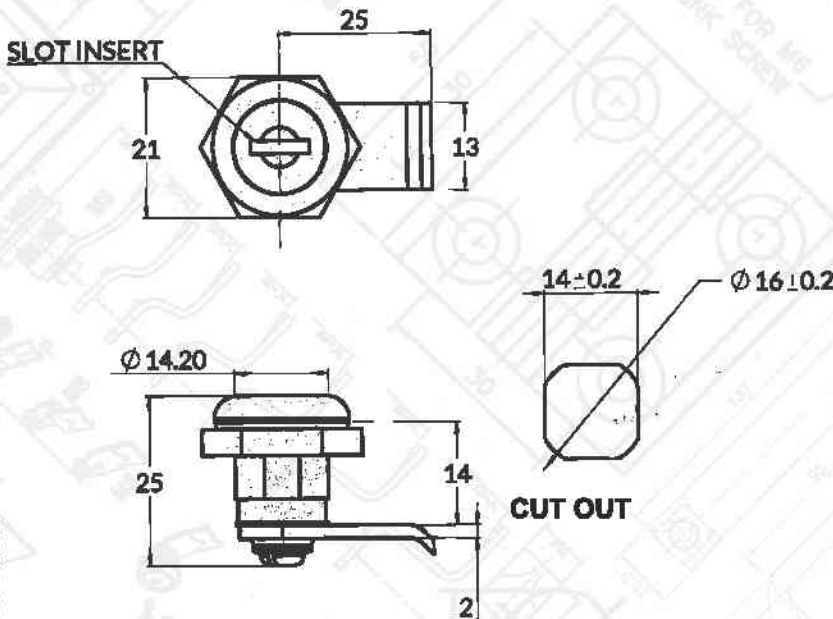
**MODEL NO.**  
SL 403

**SPECIFICATIONS**  
Key Type Lock



MODEL NO.	SPECIFICATIONS
KL 004	Key Type Lock

- **Material** : Die Cast Body, MS Nut, MS Lever, MS Key
- **Finish** : Bright Chrome



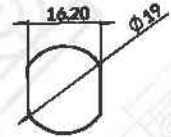
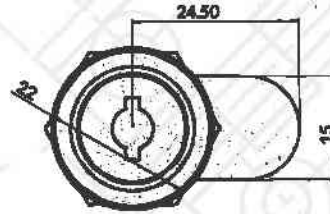
MODEL NO.	SPECIFICATIONS
KL 001	Key Type Lock
KL 001 A	Key Type Lock

- **Material** : Die Cast Body, MS Nut, MS Lever, Moulded Key
- **Finish** : Bright Chrome

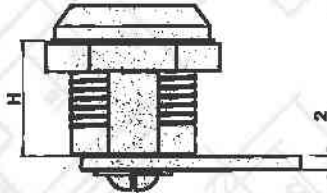
## Different Key Combination Available



- **Material** : Zinc Die Cast Body, MS Nut, MS Lever, Moulded Key
- **Finish** : Bright Chrome



Cut out



Note: H depends on your request.

H
16
18
20
25
30

**MODEL NO.**

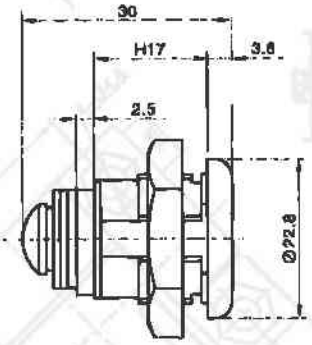
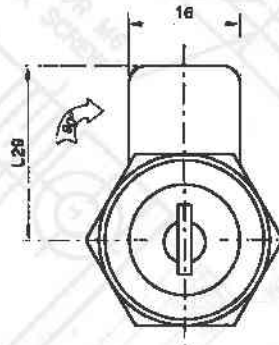
KLL 05-2

**SPECIFICATIONS**

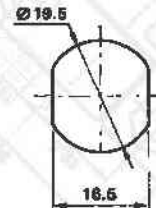
Key Type Lock with Different Key Combination



- **Material** : Die Cast Housing, MS Lever, MS Nut, Die Cast Insert, MS Key
- **Finish** : Bright Chrome



■ Cut Out

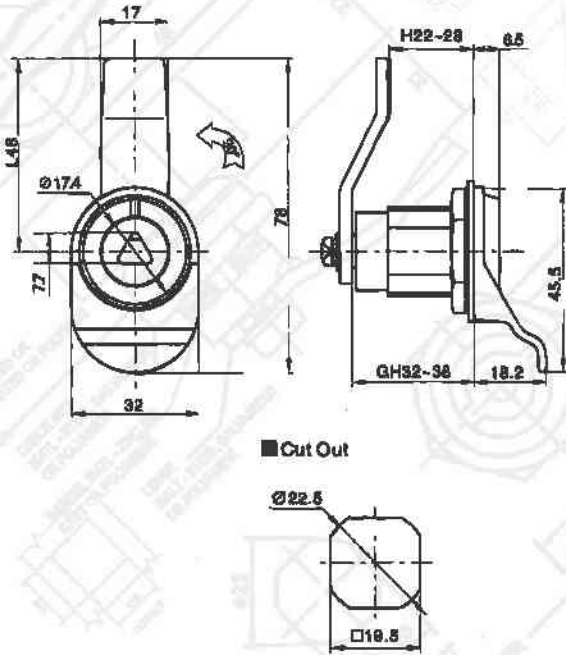


**MODEL NO.**

KLL 03

**SPECIFICATIONS**

Key Type Lock

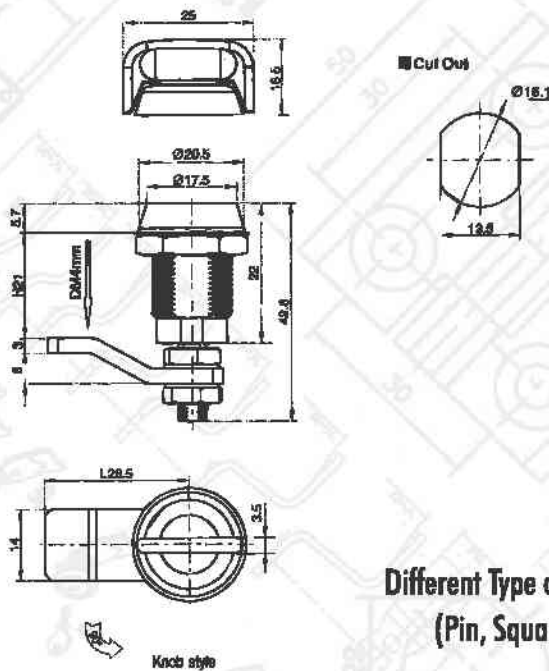


### Compression Lock



MODEL NO.	SPECIFICATIONS
MS 711-1-1L	Compression Locks

- Material : Zinc Die Cast Body & Key
- Finish : Bright Chrome



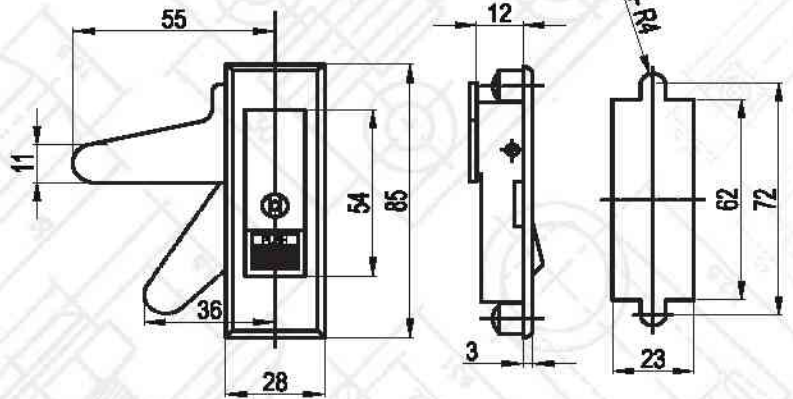
### Compression Lock



MODEL NO.	SPECIFICATIONS
MS 815-1-3	Compression Locks Knob Type

Different Type of Insert Available  
(Pin, Square, Triangles)

- Material : Zinc Die Cast Body, Die Cast Knob
- Finish : Matt Black

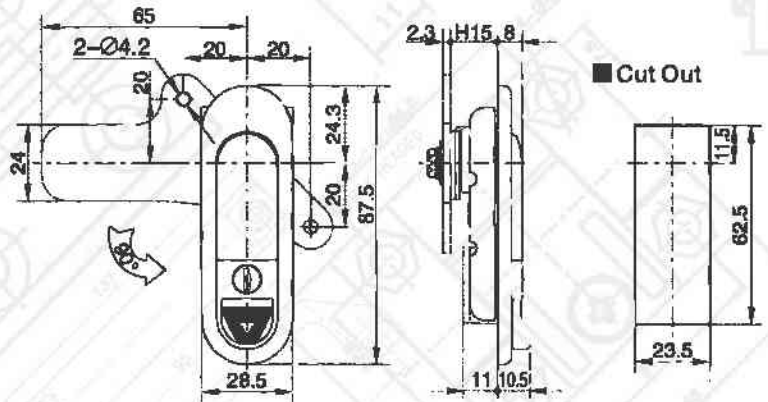


CUT OUT

- **Material** : Zinc Die Cast Lock, MS Key
- **Finish** : Bright Chrome

**MODEL NO.**  
MS 603

**SPECIFICATIONS**  
Red Button Push Type Lock



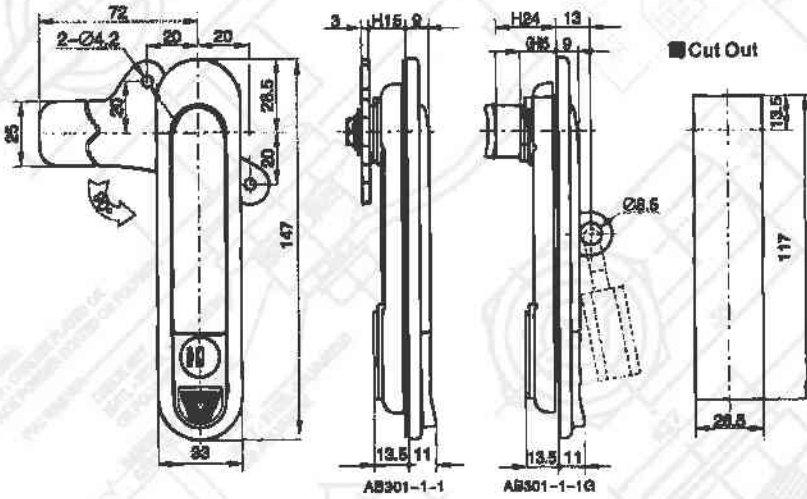
■ Cut Out

- **Material** : Die Cast Housing, MS Key
- **Finish** : Bright Chrome

**MODEL NO.**  
AB 301-3A-1

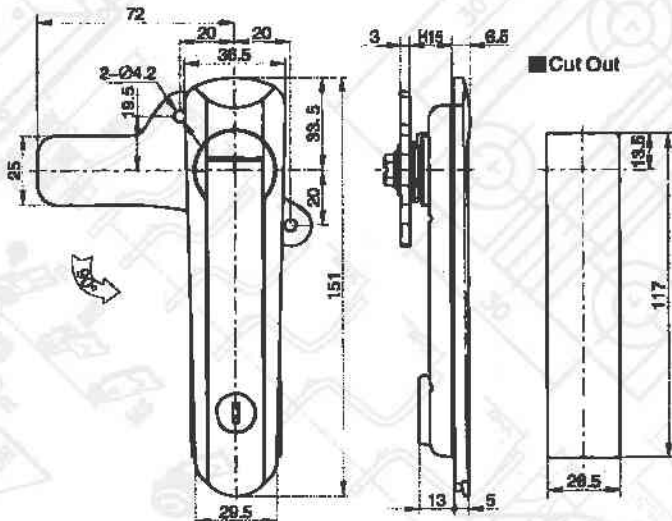
**SPECIFICATIONS**  
Key Type Plan Lock





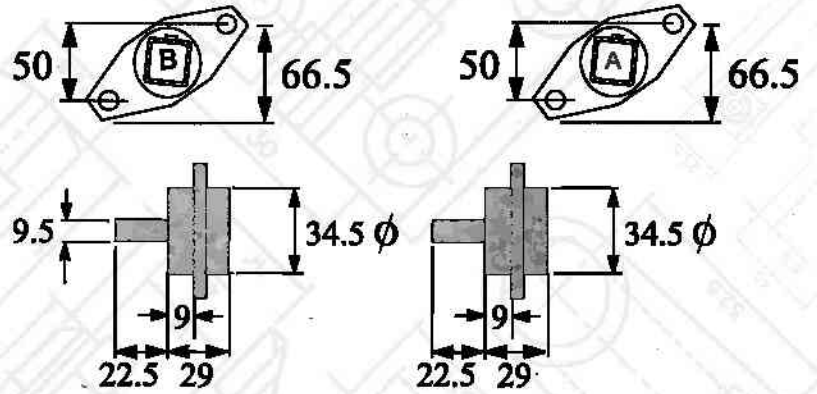
MODEL NO.	SPECIFICATIONS
AB 301-1-1	Plane Lock with Key Type

- **Material** : Zinc Die Cast Body & Key
- **Finish** : Bright Chrome



MODEL NO.	SPECIFICATIONS
AB 401-1-1	Plane Lock with Key
AB 401-1-2	Plane Lock Without Key

- **Material** : Zinc Die Cast Body, MS Lever, MS Key
- **Finish** : Bright Chrome

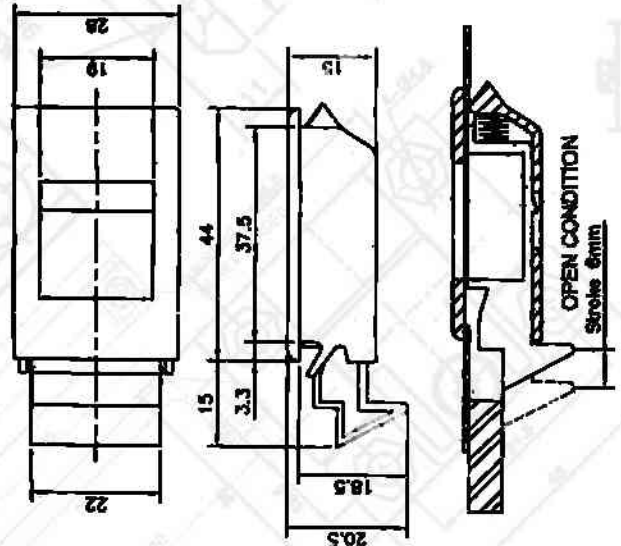


- **Material** : Zinc Die Cast Material
- **Finish** : Bright Chrome

MODEL NO.

SPECIFICATIONS

Caster Lock with Key



- **Material** : Polyamide Material
- **Finish** : Matt Black

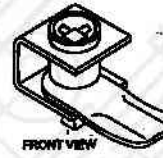
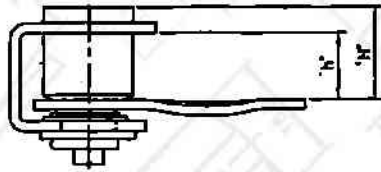
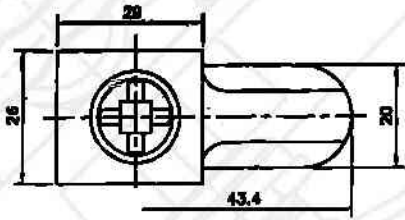
MODEL NO.

SPECIFICATIONS

RLS 73

Sliding Lock

### ECO LOCK



h	H
15	20
20	25
25	30
30	35
35	40
40	45
45	50

15MM



RLS - 01

20 MM



RLS - 02

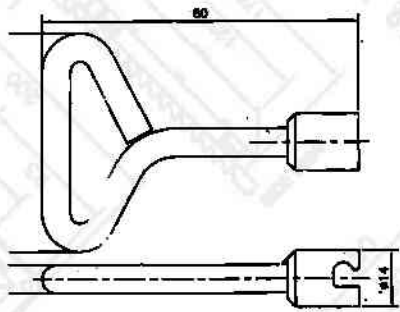
25MM



RLS - 03

Material - MS Panel Lock

Finish - Zinc Yellow Plating



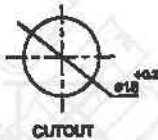
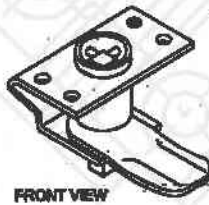
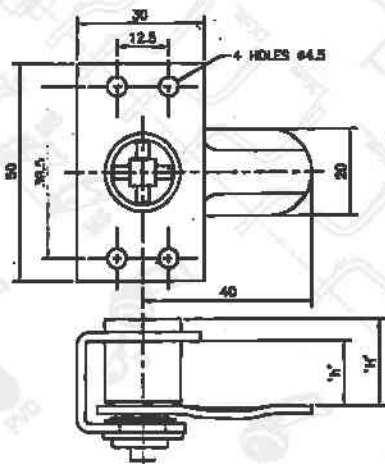
RLK - 13



Material - MS Key

ECO LOCK KEY

Finish - Zinc Yellow Plating



RLS - 08

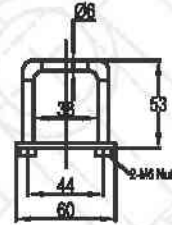
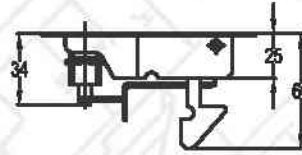
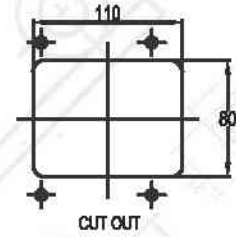
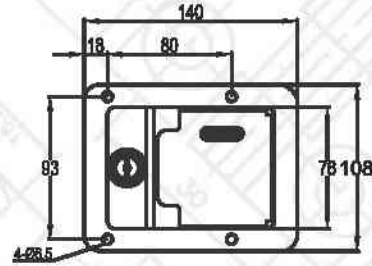


h	H
15	20
20	25
25	30
30	35
35	40
40	45
45	50

Material - MS Panel Lock

ECO LOCK STANDARD

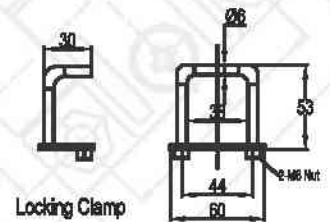
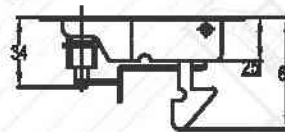
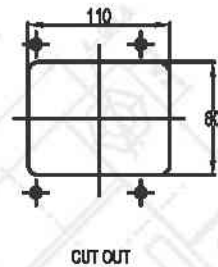
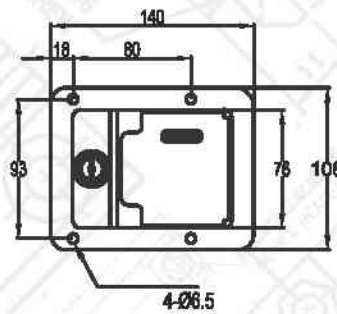
Finish - Zinc Yellow Plating



- **Material** : Stainless Steel Lock, Moulded Key
- **Finish** : Natural Chrome Finish

**MODEL NO.**  
SL 007 SS

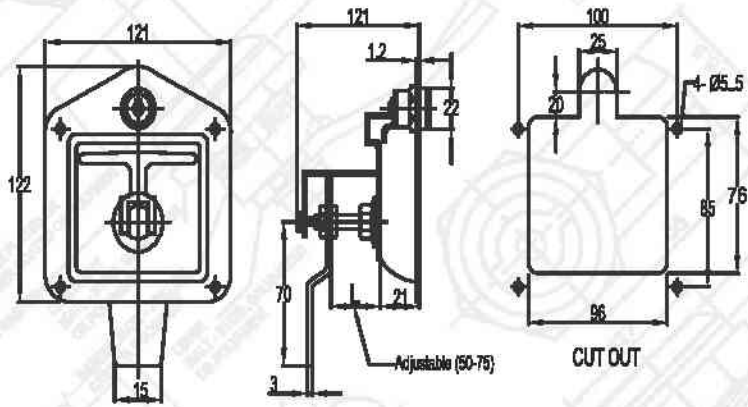
**SPECIFICATIONS**  
SS Canopy Lock



- **Material** : MS Lock with Molded Key
- **Finish** : Black Powder Coating

**MODEL NO.**  
SL 007 MS

**SPECIFICATIONS**  
Canopy Lock



MODEL NO.	SPECIFICATIONS
SL 004 SS	SS Canopy Lock
SL 004 MS	MS Canopy Lock

- **Material** : Stainless Steel Canopy Lock
- **Finish** : Natural Chrome Finish



MODEL NO.	SPECIFICATIONS
	Freezer Lock Small
	Freezer Lock Big

- **Material** : Die Cast Material
- **Finish** : Black Powder Coated

# LOCK ACCESSORIES

PANEL LOCK

LOCK ACCESSORIES

3 POINT LOCK

PANEL HANDLES

PANEL HINGES

AIR-VENT FAN FILTERS

DRAG CHAIN

KNOB

BUS-BAR

GROMMET

PVC YELLOW FERRULE

WIRE ACCESSORIES

OTHER ACCESSORIES


**RLK 01 PIN KEY - DIE CAST**

**RLK 02 SQUARE KEY - DIE CAST**

**RLK 03 TRIANGLE KEY - DIE CAST**

**RLK 04 MINUS KEY - DIE CAST**

**RLK 03 P TRIANGLE KEY - POLYAMIDE**

**RLK 01 P PIN KEY - POLYAMIDE**

# LOCK ACCESSORIES



**PIN TYPE KEY POLYAMIDE**



**OPEN CLOSE THICK BORDER**



**LABLE WITH COMPANY NAME**



**EMERGENCY STOP**



**FOUR WAY KEY - POLYAMIDE**



**FOUR WAY KEY - DIE CAST**

PANEL LOCK

LOCK ACCESSORIES

3 POINT LOCK

PANEL HANDLES

PANEL HINGES

AIR-VENT FAN FILTERS

DRAG CHAIN

KNOB

BUS-BAR

GROMMET

PVC YELLOW FERRULE

Wire ACCESSORIES

OTHER ACCESSORIES

# LOCK ACCESSORIES

PANEL LOCK

**LOCK ACCESSORIES**

3 POINT LOCK

PANEL HANDLES

PANEL HINGES

AIR-VENT FAN FILTERS

DRAG CHAIN

KNOB

BUS-BAR

GROMMET

PVC YELLOW FERRULE

Wire ACCESSORIES

OTHER ACCESSORIES


**MS NUT - 22.5mm**

**PVC NUT - 22.5mm**

**POLYAMIDE LEVER**

**MS LEVER**

**RLS 64 - FINGER SUPPORT**

**PVC LEVER**



# LOCK ASSEMBLY COMBINATIONS FOR RLS SERIES

PANEL LOCK

LOCK ACCESSORIES

3 POINT LOCK

PANEL HANDLES

PANEL HINGES

AIR-VENT FAN FILTERS

DRAG CHAIN

KNOB

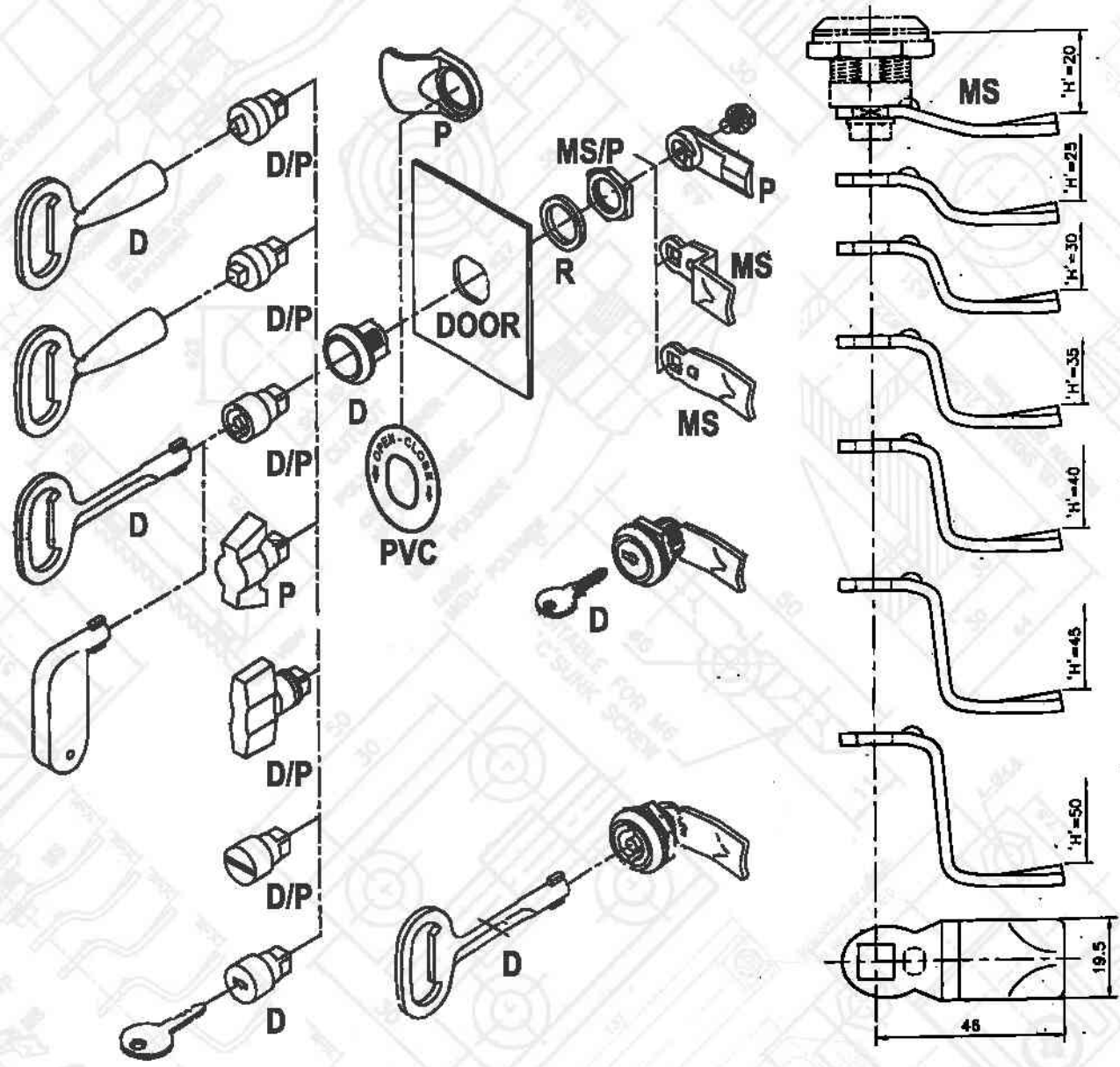
BUS-BAR

GROMMET

PVC YELLOW FERRULE

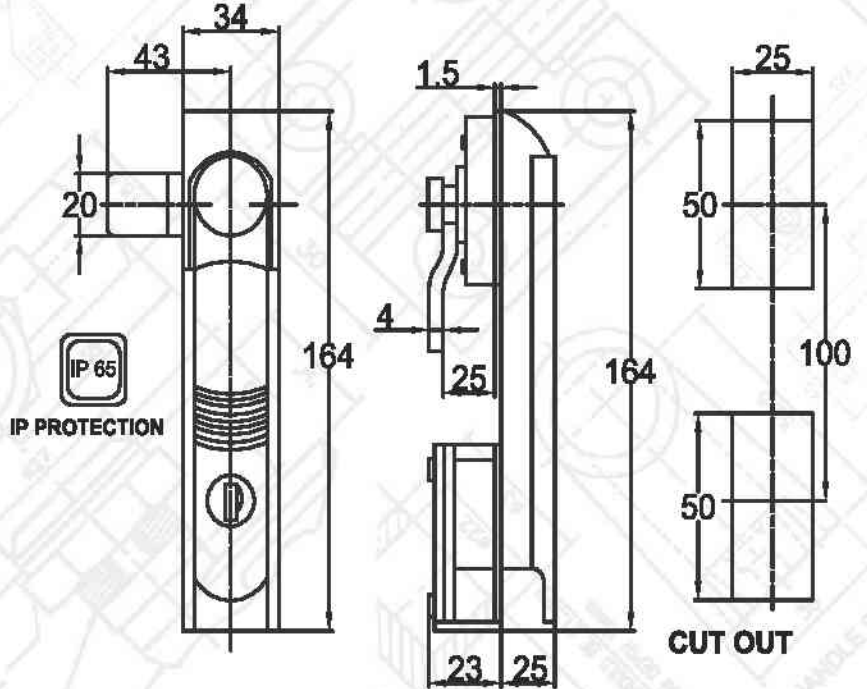
WIRE ACCESSORIES

OTHER ACCESSORIES



Die Cast (D)  
 Polyamide (P)  
 Rubber (R)  
 Poly Vinyl Chloride (PVC)  
 Mild Steel (MS)

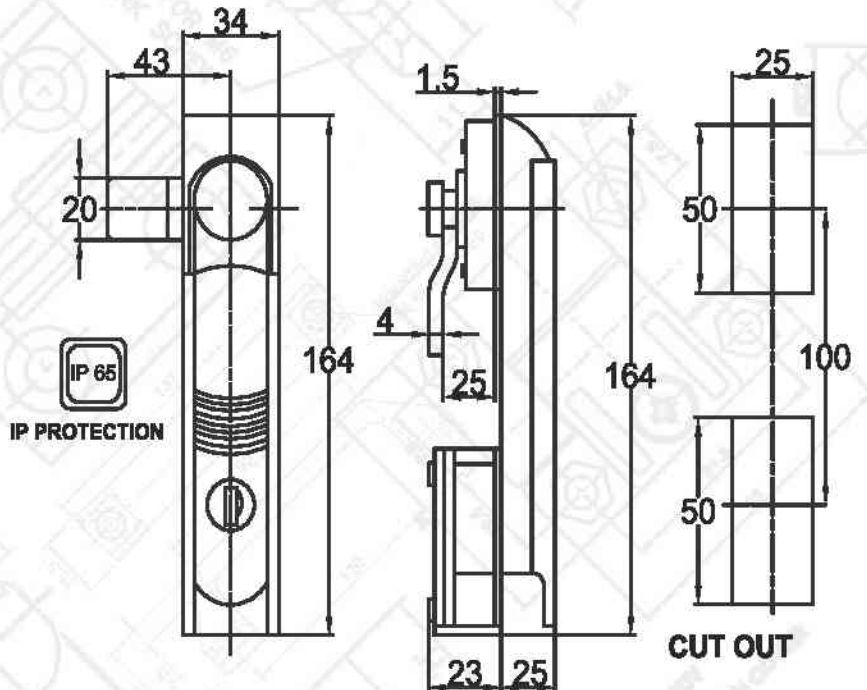
\* Different Size of MS Lever available



Cam Controller Swing Handle Locks( Round Rod Type )

VLL 01

3 Point Lock Polyamide Body



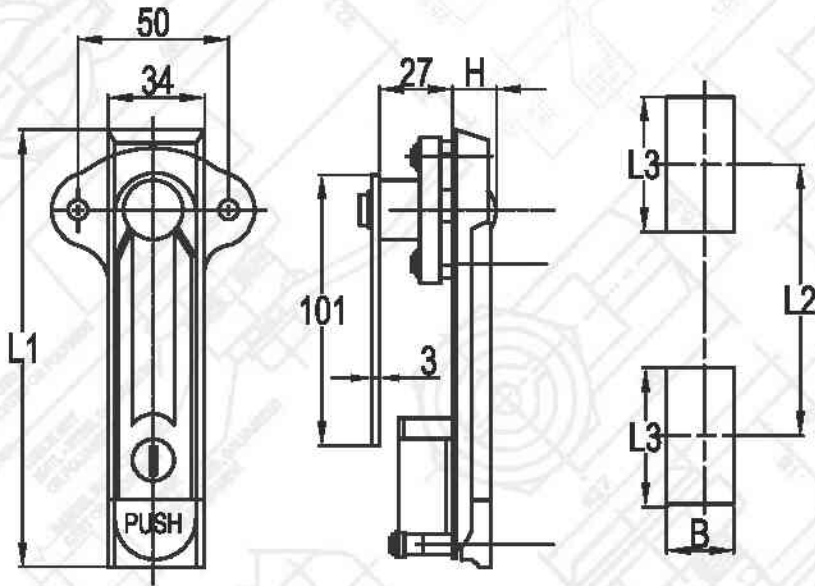
Cam Controller Swing Handle Locks( Round Rod Type )

VLL 02

3 Point Lock Polyamide with Key

VLL 02 B

3 Point Lock Polyamide with Key Big Body



PART No	L1	L2	L3	B	H
MS 743-1-1	162	100	50	25	16
MS 743-2-1	138	74	50	25	18

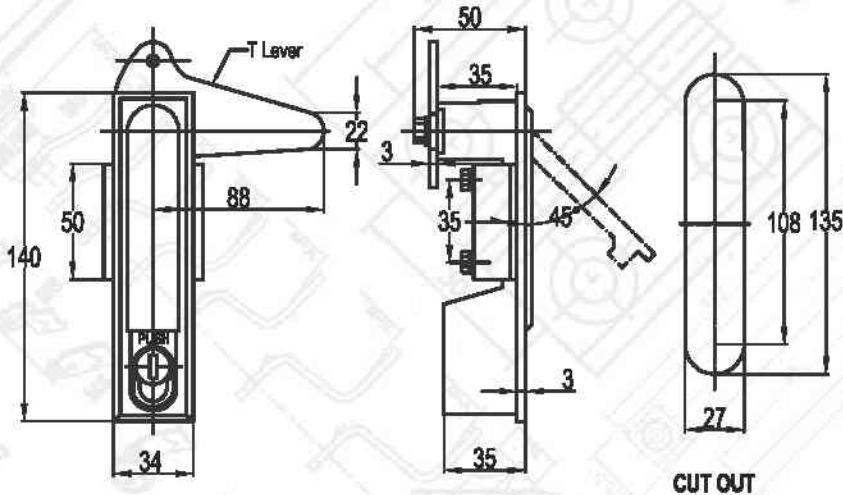


**Cam Controller Swing Handle Locks( Round Rod Type )**

MS 743-1-1

Cam Controller Swing Handle 3 Point Lock

Push to unlock

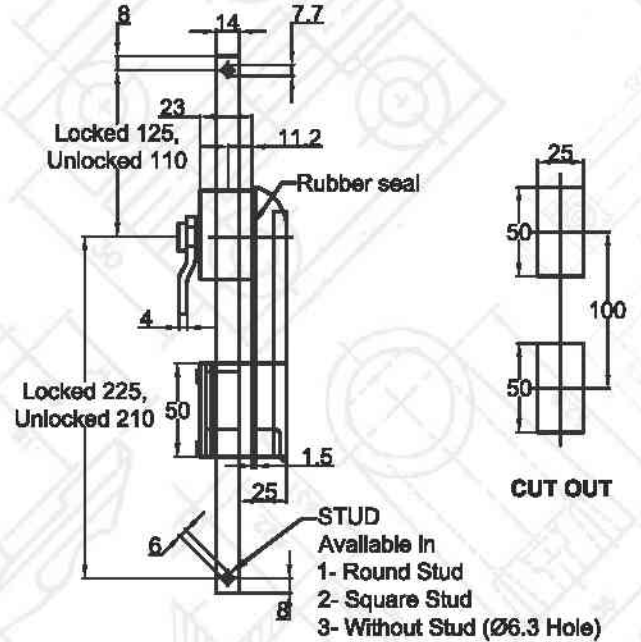


**Cam Controller Swing Handle Locks( Round Rod Type )**

MS 480-1-1

Push to Unlock 3 Point Lock

Cam Controller Swing Handle Lock



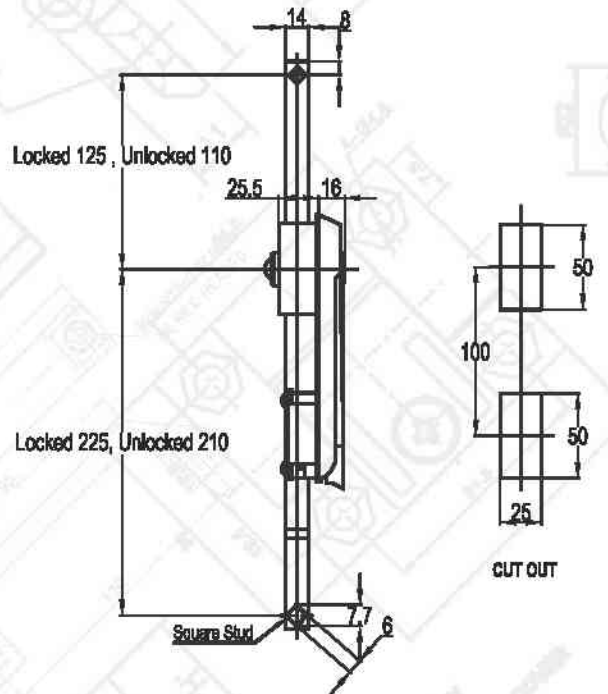
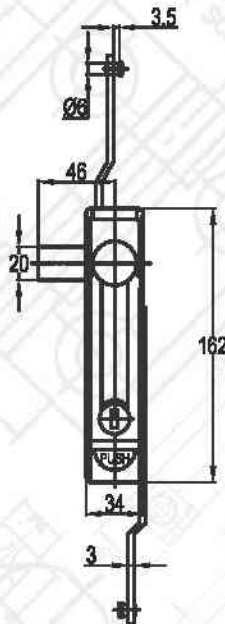
Rod Controller Swing Handle Locks( Flat Rod Type )

VLL 04

Rod Controller Swing Handle 3 Point Lock

Material

Polyamide

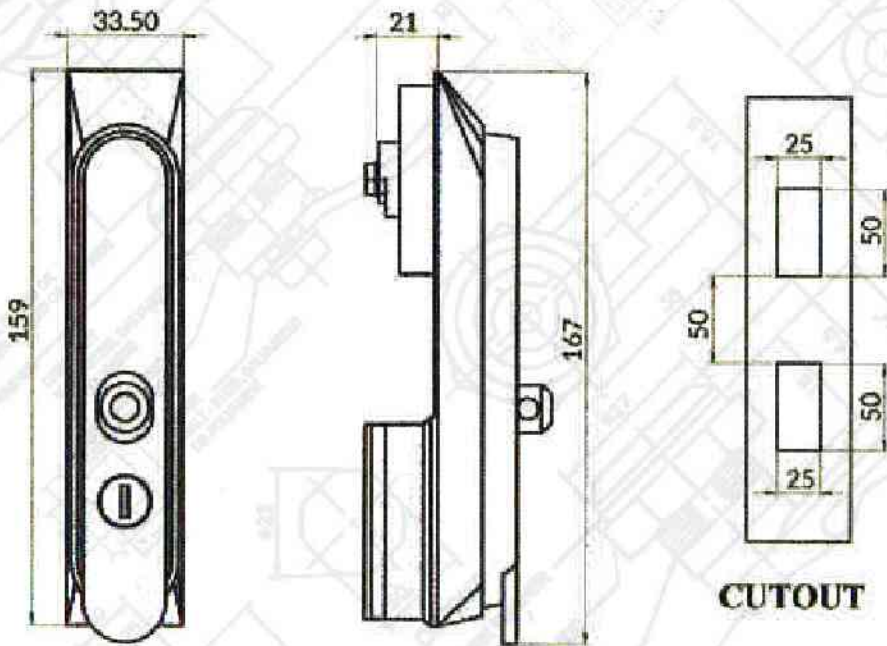


Rod Controller Swing Handle Locks( Flat Rod Type )

MS 741-1-1

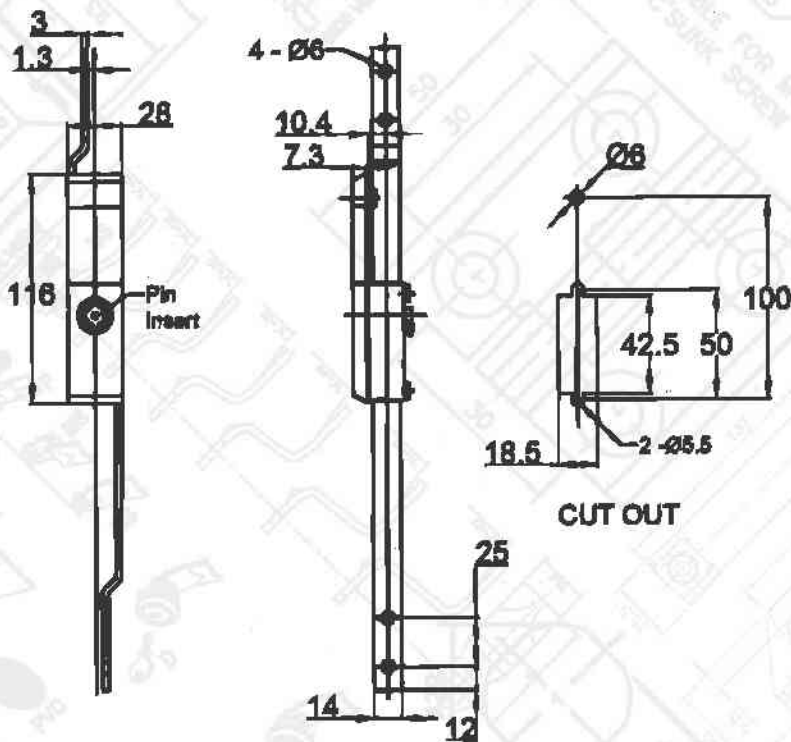
Swing Handle with Flat Rod 3 Point Lock

Push to unlock



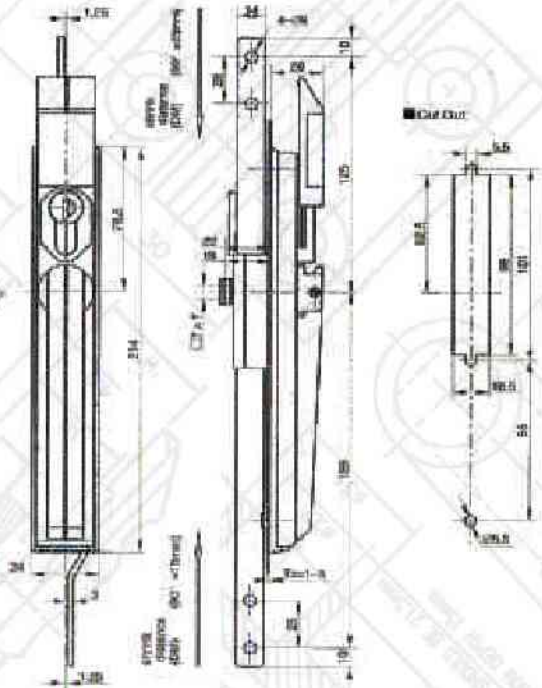
Cam Controller Swing Handle Locks( Round Rod Type )

RLL 02	Pad Type 3 Point Lock	Material	Polyamide
--------	-----------------------	----------	-----------



Rod Controller Swing Handle Locks( Flat Rod Type )

MS 821	3 Point Lock with Key	Material	Die Cast
--------	-----------------------	----------	----------

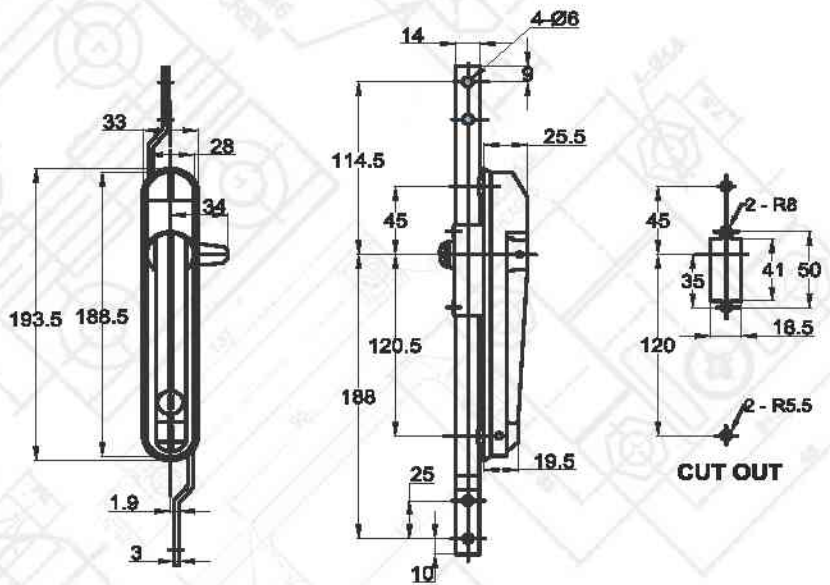

**Rod Controller Swing Handle Locks( Flat Rod Type )**

MS 4086 Z

Rod Controller Swing Handle 3 Point Lock

Material

Die Cast

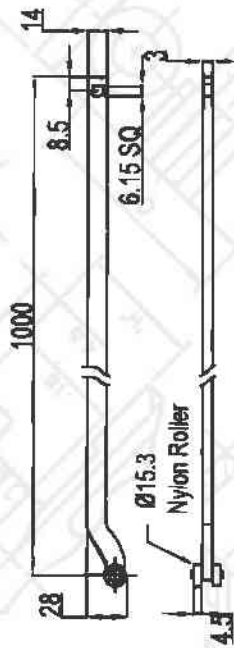
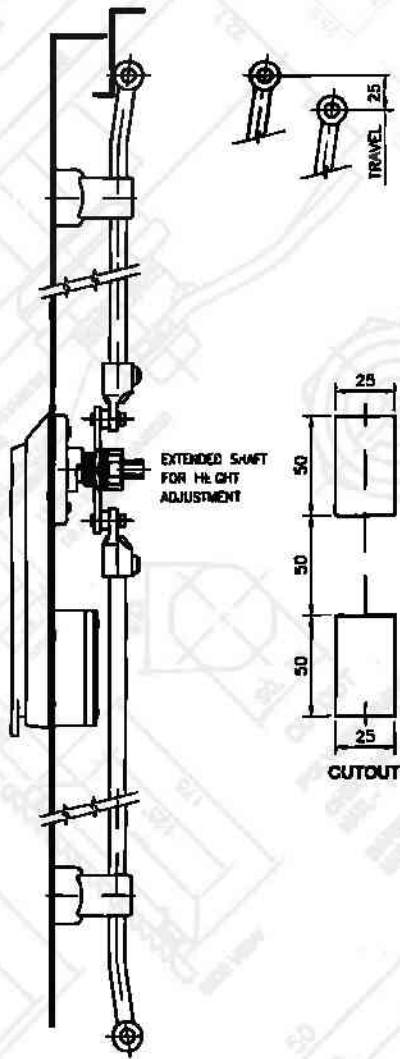

**Rod Controller Swing Handle Locks( Flat Rod Type )**

MS 484-1-1

Rod Controller Swing Handle 3 Point Lock

Material

Die Cast



RLL 015

Flat Rod



FLAT ROD SUPPORT



ROUND ROD SUPPORT



LEVER



ROD SUPPORT HOOK



ROUND ROD



WHEEL FOR ROUND ROD

PANEL LOCK

LOCK ACCESSORIES

3 POINT LOCK

PANEL HANDLES

PANEL HINGES

AIR-VENT FAN FILTERS

DRAG CHAIN

KNOB

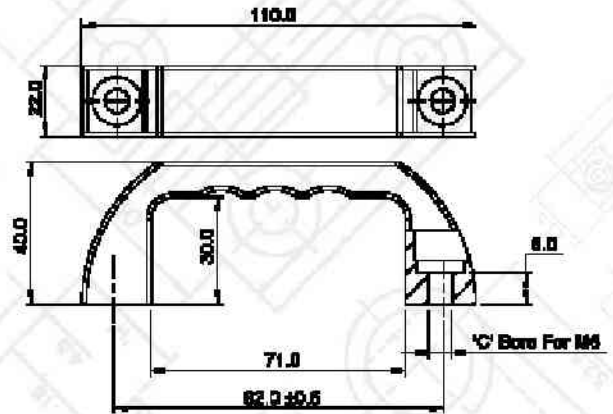
BUS-BAR

GROMMET

PVC YELLOW FERRULE

Wire ACCESSORIES

OTHER ACCESSORIES

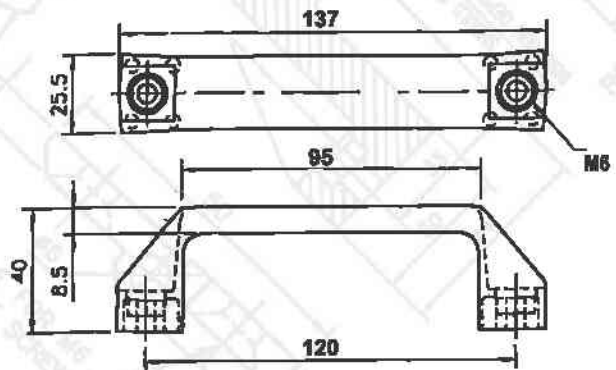


RHP 09

92 mm Hole Center

Material

Polyamide

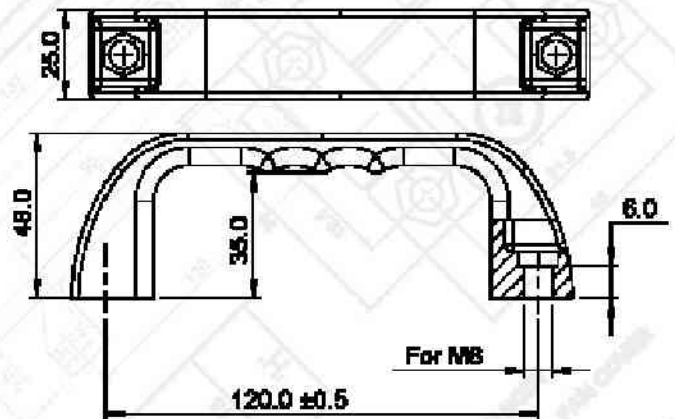


RHP 03

120 mm Hole Center

Material

Polyamide



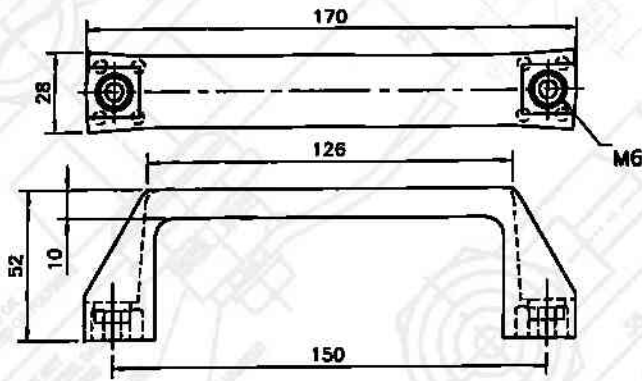
RHP 11

120 mm Hole Center

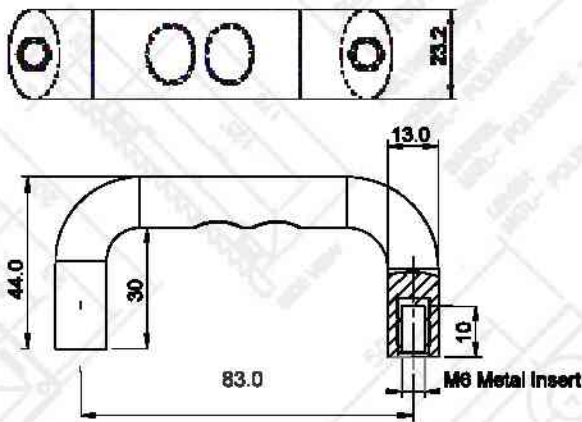
Material

Polyamide

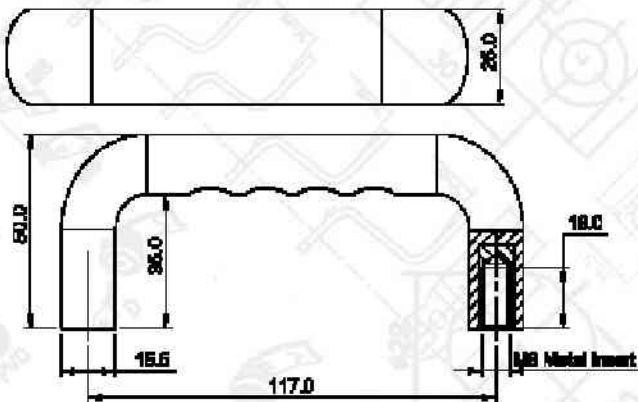




RHP 04	150 mm Hole Center	Material	Polyamide
--------	--------------------	----------	-----------



RHP 07	83 mm Hole Center	Material	Polyamide Handle Brass Insert
--------	-------------------	----------	-------------------------------



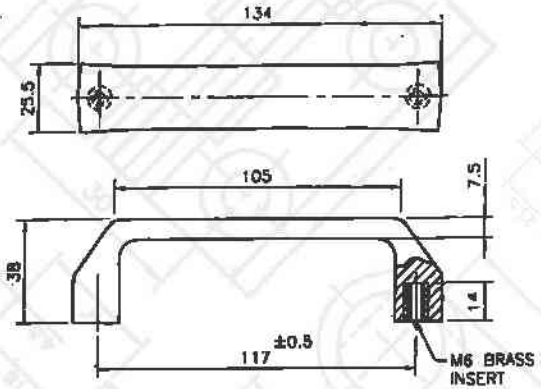
RHP 10	117 mm Hole Center	Material	Polyamide Handle Brass Insert
--------	--------------------	----------	-------------------------------

PANEL LOCK

LOCK ACCESSORIES

3 POINT LOCK

PANEL HANDLES



RHP 08

117 mm Hole Center

Material

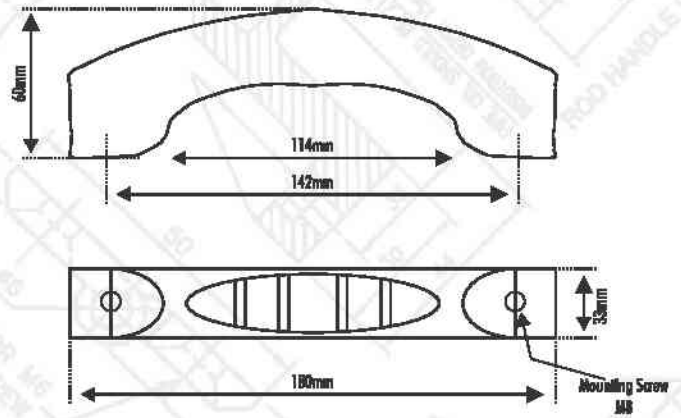
Polyamide Handle Brass Insert

PANEL HINGES

AIR-VENT FAN FILTERS

DRAG CHAIN

KNOB



RHP 12

142 mm Hole Center

Material

Polyamide

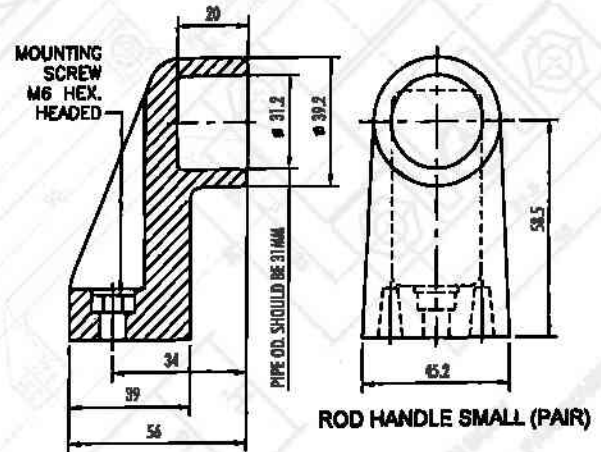
BUS-BAR

GROMMET

PVC YELLOW FERRULE

Wire ACCESSORIES

OTHER ACCESSORIES



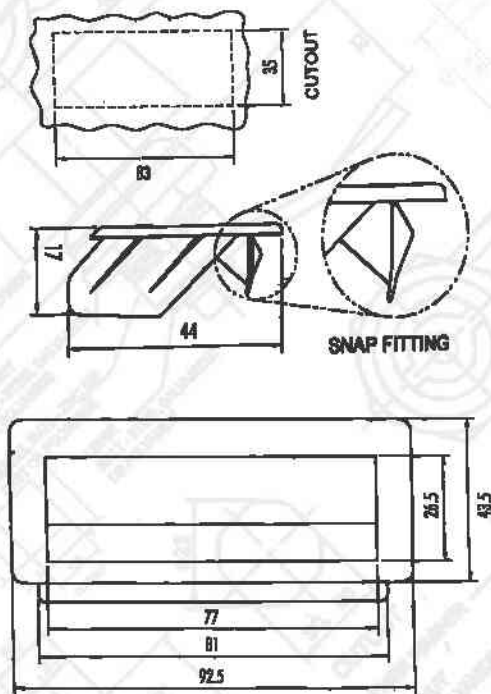
ROD HANDLE SMALL (PAIR)

RHP 05

Support with Pipe

RHP 06

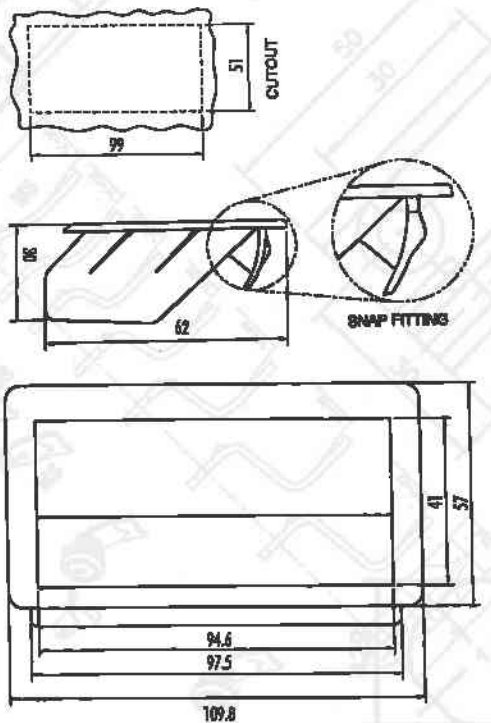
Support Only



RHP 01

Pocket Handle - Small - with 1 lock & 3 lock

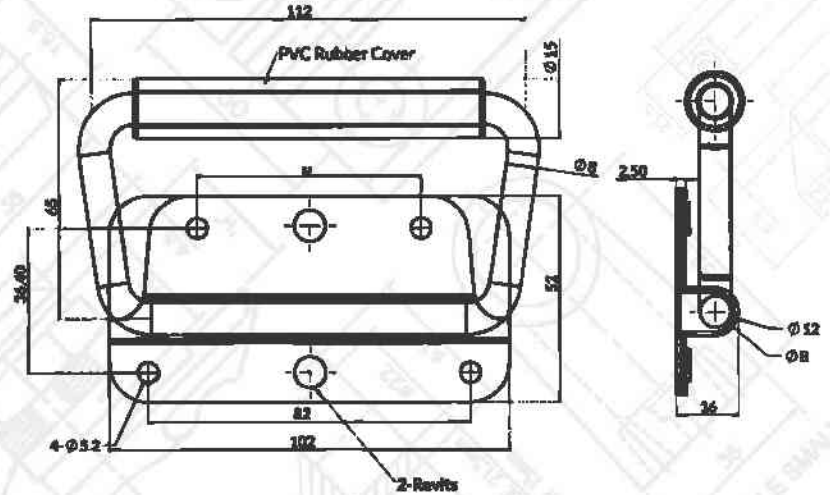
Polyamide



RHP 02

Pocket Handle - Big

Polyamide

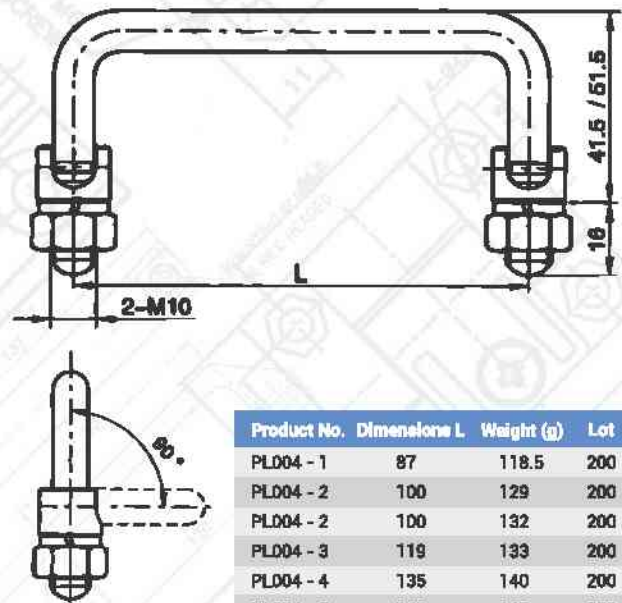


RHP 39

Swing Handle

Material

MS / SS



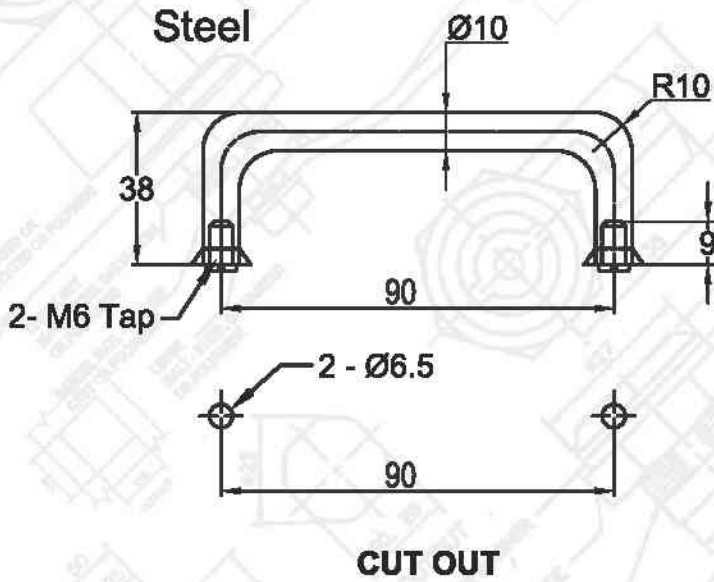
Product No.	Dimensions L	Weight (g)	Lot
PL004 - 1	87	118.5	200
PL004 - 2	100	129	200
PL004 - 2	100	132	200
PL004 - 3	119	133	200
PL004 - 4	135	140	200
PL004 - 5	149	147	200

PL 004

Adjustable Handle

Material

MS

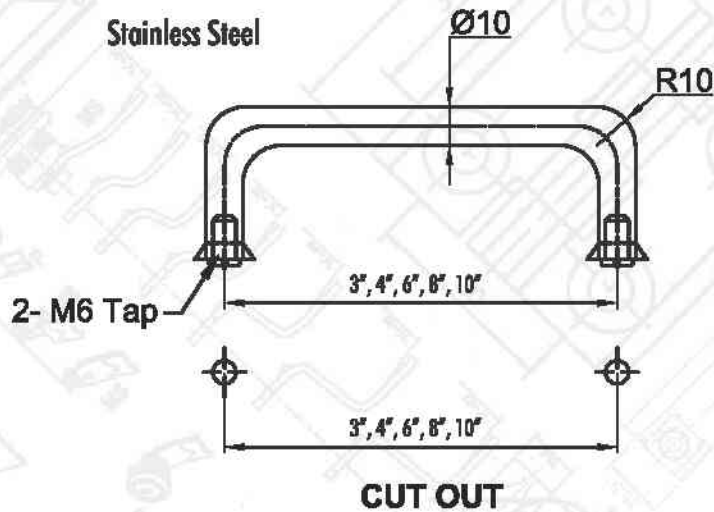


RHM 90

MS Door Handle

Material

MS



RHM SS

SS DOOR HANDLE

Material

Stainless Steel

PANEL LOCK

LOCK ACCESSORIES

3 POINT LOCK

PANEL HANDLES

PANEL HINGES

AIR-VENT FAN FILTERS

DRAG CHAIN

KNOB

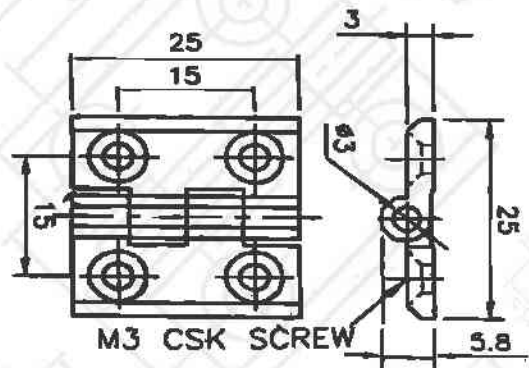
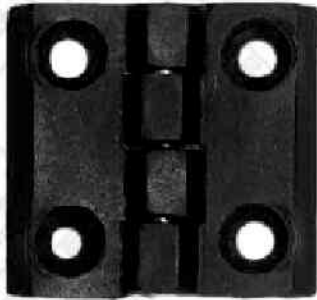
BUS-BAR

GROMMET

PVC YELLOW FERRULE

Wire ACCESSORIES

OTHER ACCESSORIES

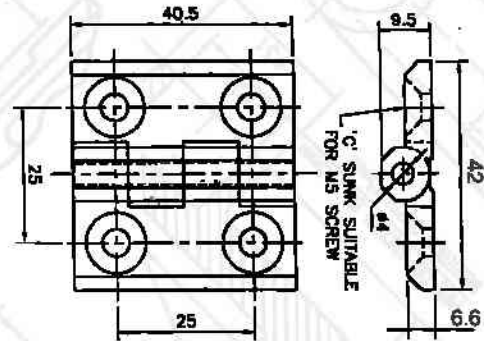
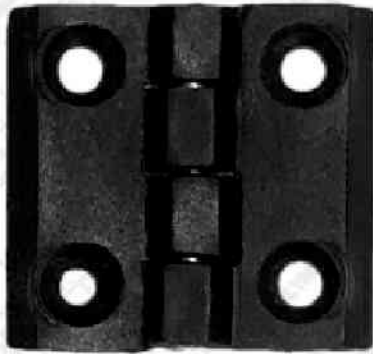


RHI 37

25 X 25 mm

Material

Polyamide - Nylon Hinges

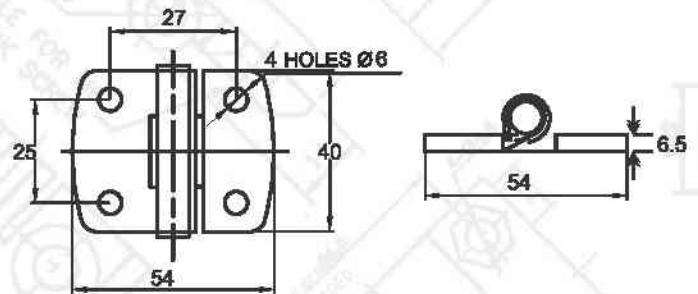
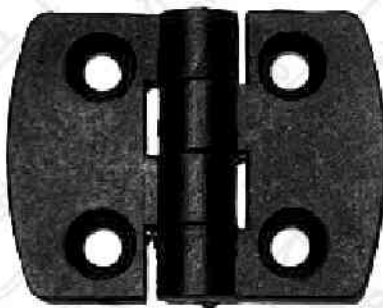


RHI 35

40 x 40 mm

Material

Polyamide - Nylon Hinges

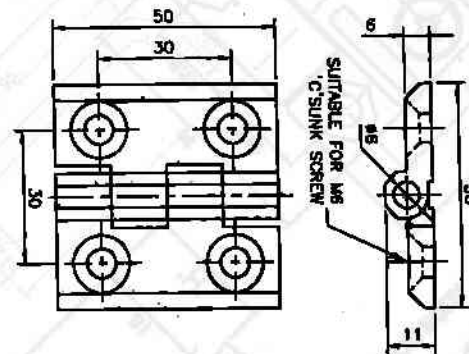


RHI 35 R

40 x 54 mm Round

Material

Polyamide - Nylon Hinges

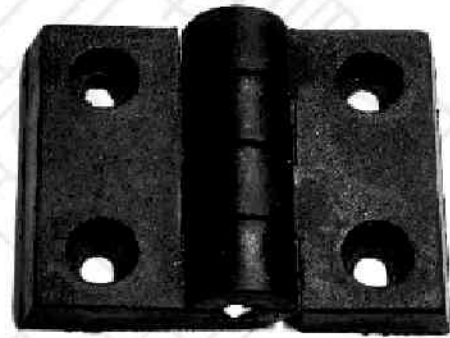
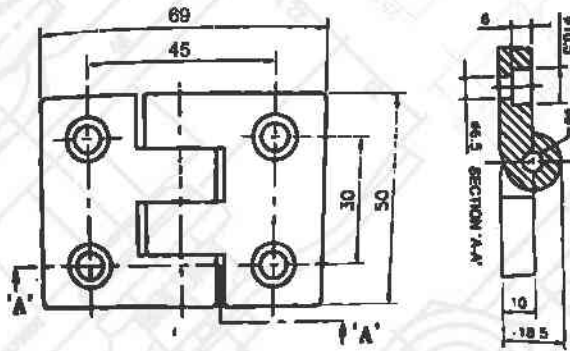


RHI 36

50 x 50 mm

Material

Polyamide - Nylon Hinges

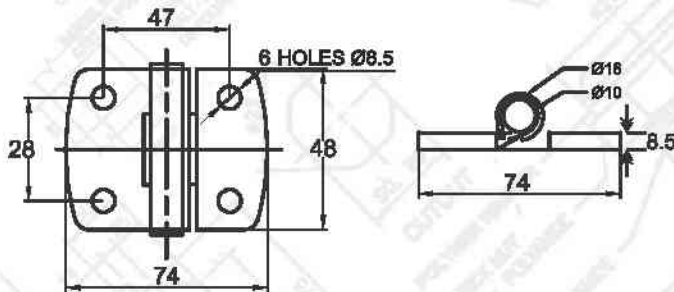


RHI 63

50 x 69 mm

Material

Polyamide - Nylon Hinges

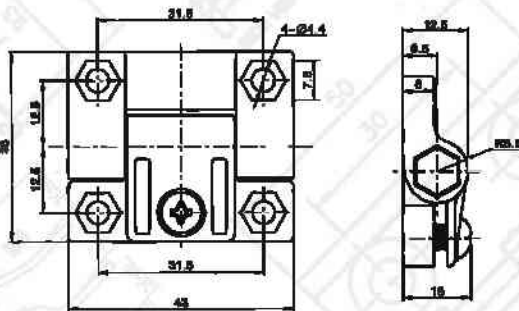


RHI 64

48 x 74 mm

Material

Polyamide - Nylon Hinges

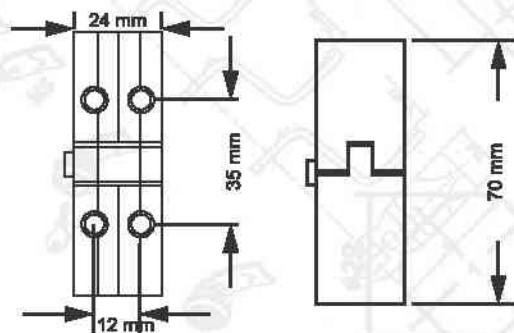


RHI 62

38 x 42 mm (Nut + Bolt)

Material

Polyamide - Nylon Hinges



RHI 99

70 x 24 mm

Polyamide - Nylon Hinges

- PANEL LOCK
- LOCK
- ACCESSORIES
- 3 POINT LOCK
- PANEL HANDLES
- PANEL HINGES
- AIR-VENT
- FAN FILTERS
- DRAG CHAIN
- KNOB
- BUS-BAR
- GROMMET
- PVC YELLOW FERRULE
- ACCESSORIES
- Wire
- ACCESSORIES
- OTHER
- ACCESSORIES

PANEL LOCK

LOCK ACCESSORIES

3 POINT LOCK

PANEL HANDLES

PANEL HINGES

AIR-VENT FAN FILTERS

DRAG CHAIN

KNOB

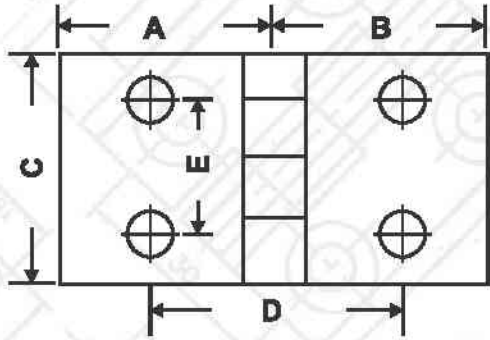
BUS-BAR

GROMMET

PVC YELLOW FERRULE

Wire ACCESSORIES

OTHER ACCESSORIES



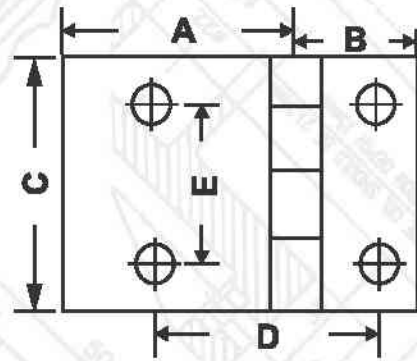
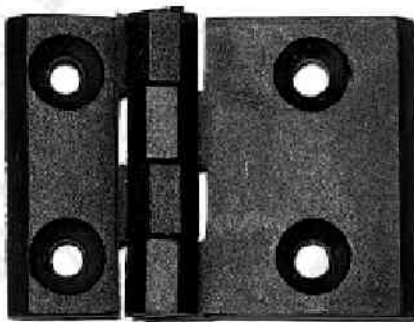
	RHI 36 BB	RHI 35 BB
A	42.5	36.5
B	42.5	36.5
C	50.0	40.0
D	50.0	42.5
E	30.0	25.0

RHI 35 BB

Polyamide 40 x 73 mm Hinges

RHI 36 BB

Polyamide 50 x 85 mm Hinges



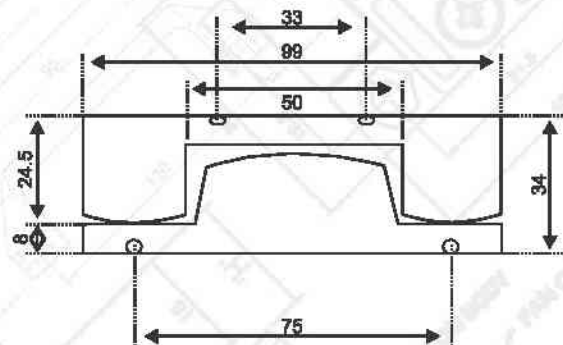
	RHI 35 BS	RHI 36 BS
A	36.5	42.5
B	21.5	25.0
C	40.0	50.0
D	33.5	41.0
E	25.0	30.0

RHI 35 BS

Polyamide 40 x 57 mm Hinges

RHI 36 BS

Polyamide 50 x 68 mm Hinges

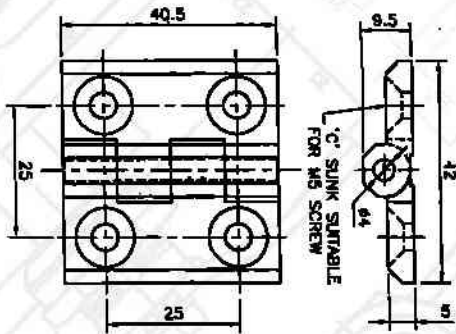


RHI 84

34 x 99 mm

Polyamide - Nylon Hinges



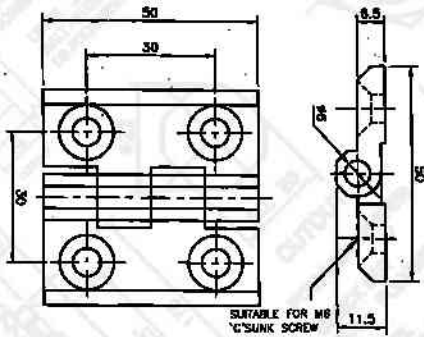


RHI 41

40 x 40 mm

Material

Zinc Die - Cast Hinges

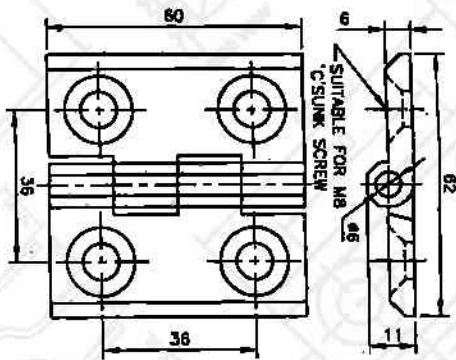


RHI 80

50 x 50 mm

Material

Zinc Die - Cast Hinges

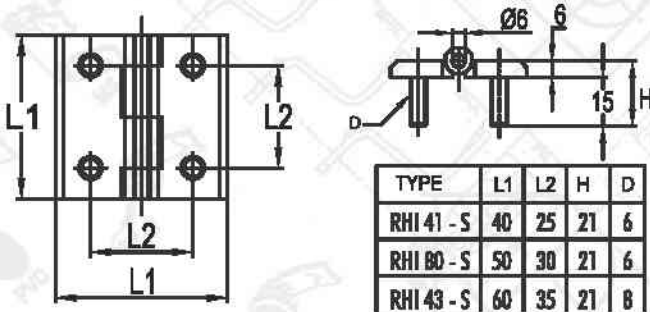


RHI 43

60 x 60 mm

Material

Zinc Die - Cast Hinges



TYPE	L1	L2	H	D
RHI 41 - S	40	25	21	6
RHI 80 - S	50	30	21	6
RHI 43 - S	60	35	21	8



RHI 41 - S

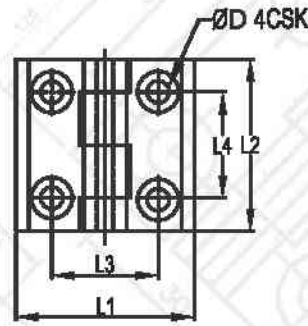
40 x 40 mm Die Cast with Stud Hinge

RHI 80 - S

50 x 50 mm Die Cast with Stud

RHI 43 - S

60 x 60 mm Die Cast with Stud

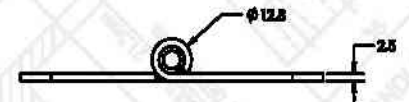
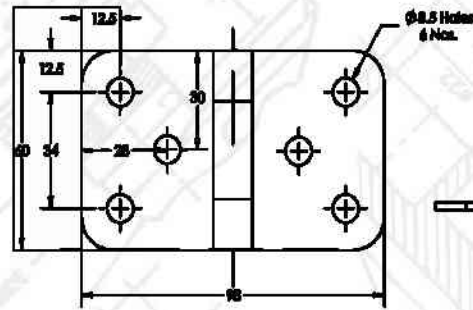


TYPE	L1	L2	L3	L4	H	ØD
60x60	60	60	36	36	8	8.5
50x50	50	50	30	30	6	6.2
40x40	40	40	25	25	5	5.2

Available in Stainless Steel

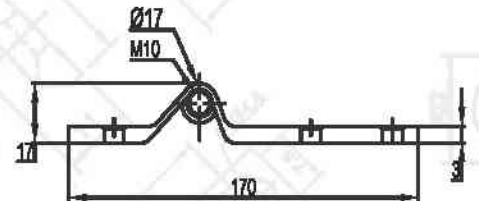
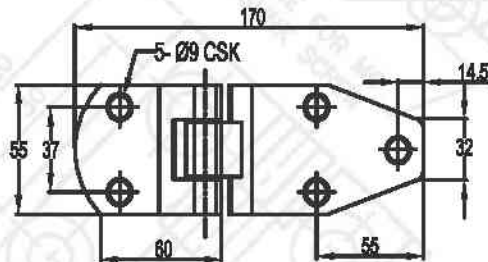
RHN 40 40 x 40 mm Stainless Steel - 304  
RHN 50 50 x 50 mm Stainless Steel - 304

RHN 60 60 x 60 Stainless Steel - 304



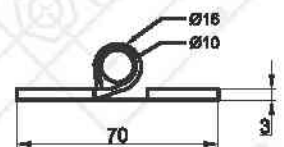
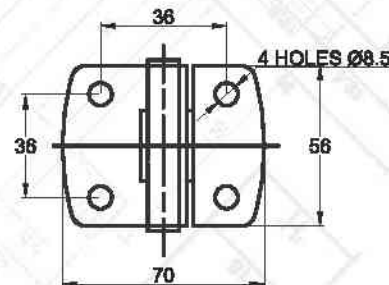
HN-038 BIG 98 x 60 mm

Material Stainless Steel



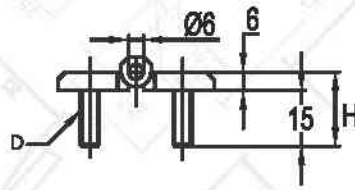
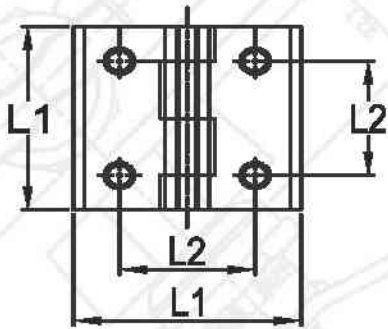
HN-019 SS 170 x 55 mm Stainless Steel

HN-019 B MS - Black Powder Coated



HN-038 SMALL 70 X 36 mm

Material Stainless Steel



TYPE	L1	L2	H	D
RHI 36 - S	50	30	21	6

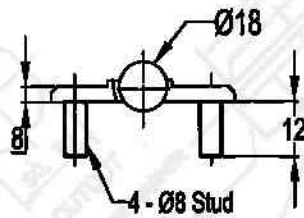
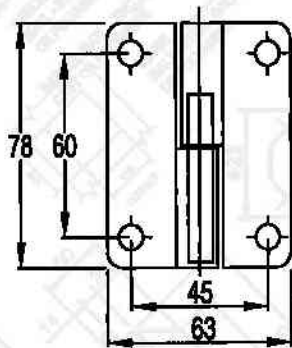


RHI 36 - STUD

50 x 50 mm with Stud

Material

Polyamide - Nylon Hinges

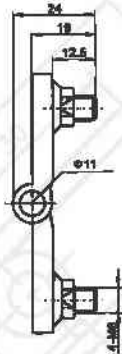
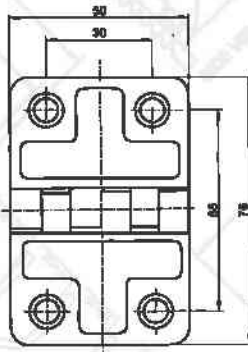


RHI K 01-LH

Zinc Die Cast Hinges (78 x 63 mm)

RHI K 01-RH

Zinc Die Cast Hinges

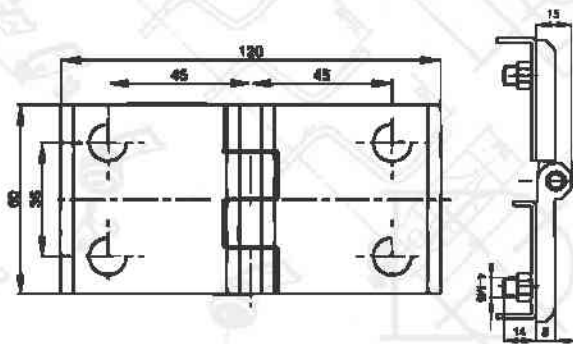


CL 214 - 1 A

Small Hinges with Stud (50 x 75 mm)

Material

Zinc Die Cast Hinges



CL 215 - 1 A

Big Hinges with Stud (60 x 120 mm)

Material

Zinc Die Cast Hinges

PANEL LOCK

LOCK ACCESSORIES

3 POINT LOCK

PANEL HANDLES

PANEL HINGES

AIR-VENT FAN FILTERS

DRAG CHAIN

KNOB

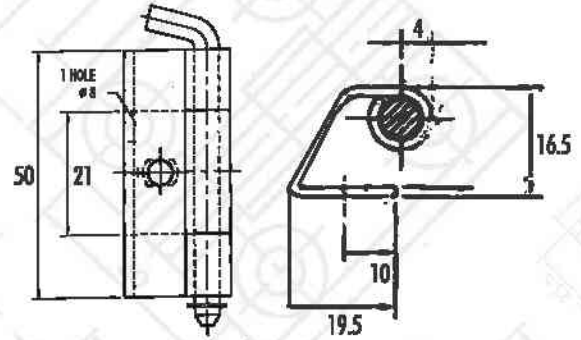
BUS-BAR

GROMMET

PVC YELLOW FERRULE

Wire ACCESSORIES

OTHER ACCESSORIES

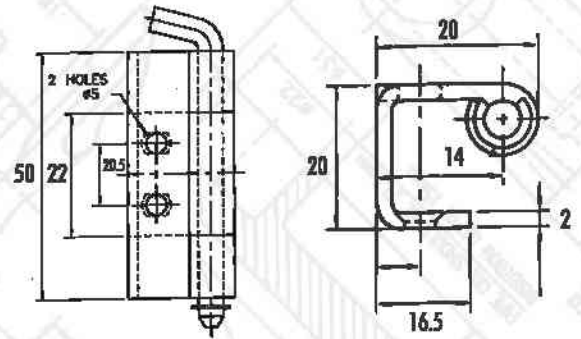


RHI 11

One Hall Hinge - 50mm

Material

MS - Steel

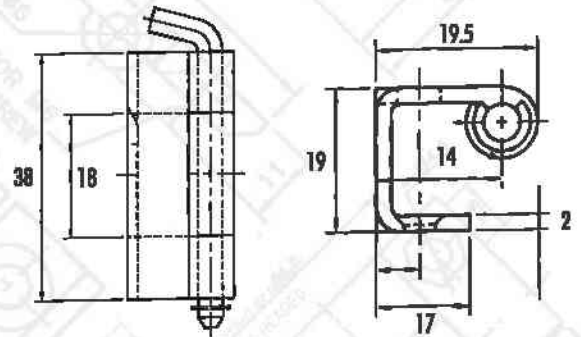


RHI 12

Two Hall Hinge - 50mm

Material

MS - Steel

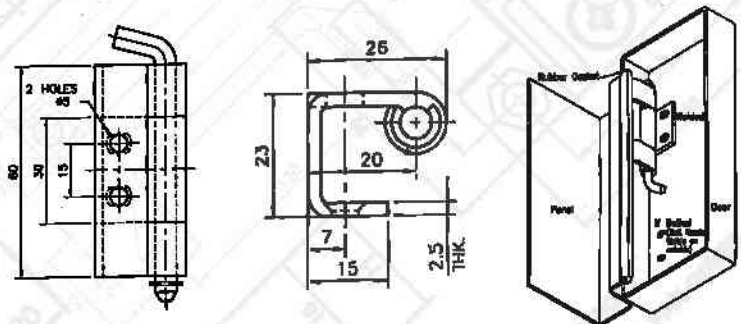


RHI 13

40mm Hinge

Material

MS - Steel

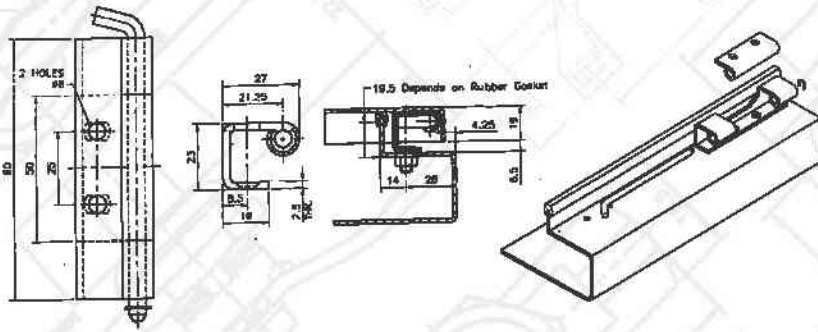
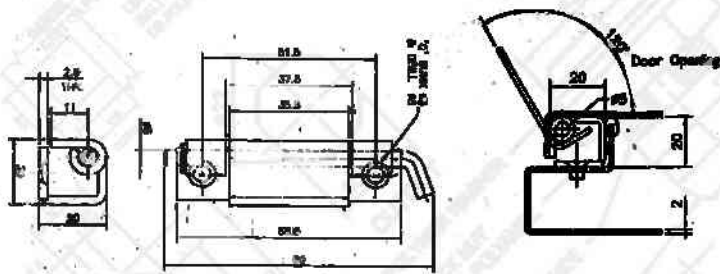
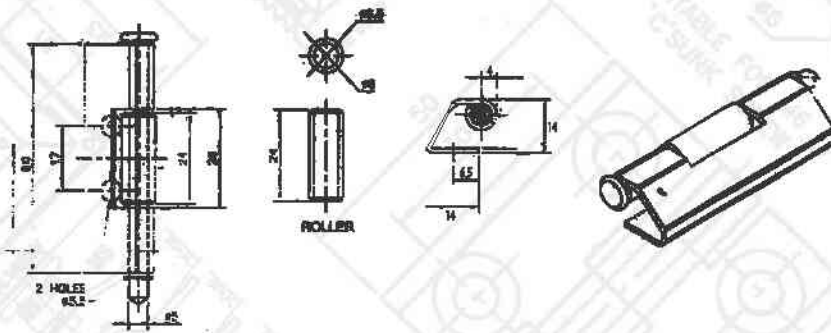
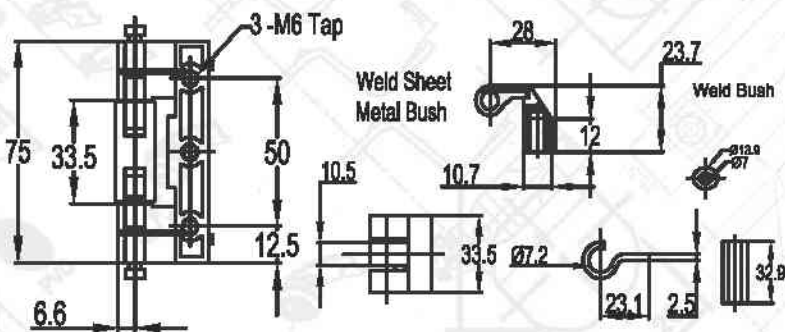


RHI 24

Concealed Hinge - 60 mm

Material

MS - Steel


**RHI 25**
**Concealed Hinge - 90 mm**
**MS - Steel**

**RHI 28**
**Concealed Hinge 80 mm**
**Material**
**MS - Steel**

**RHI 29**
**Concealed Hinge - 60 x 15 mm**
**Material**
**MS - Steel**

**RHI 77**
**Rital Hinge**
**Material**
**Zinc Die Cast - Powder Coated**

PANEL LOCK

LOCK ACCESSORIES

3 POINT LOCK

PANEL HANDLES

PANEL HINGES

AIR-VENT FAN FILTERS

DRAG CHAIN

KNOB

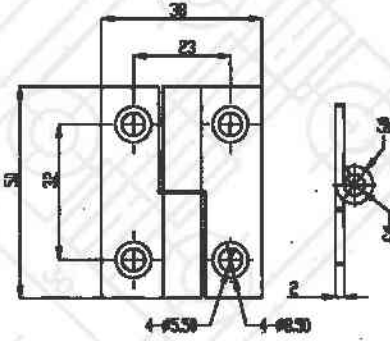
BUS-BAR

GROMMET

PVC YELLOW FERRULE

Wire ACCESSORIES

OTHER ACCESSORIES

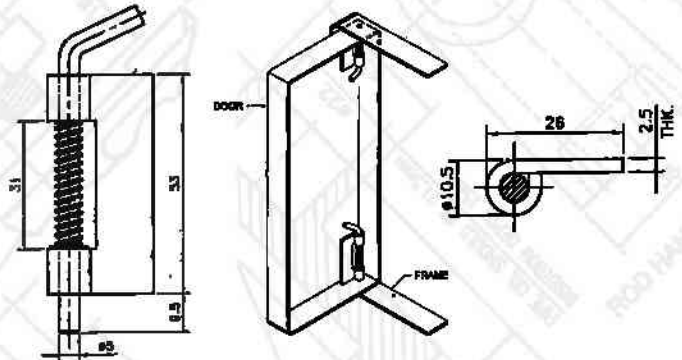


HN 35

Sheet Metal Hinge (38 x 50 mm)

Material

MS - Steel



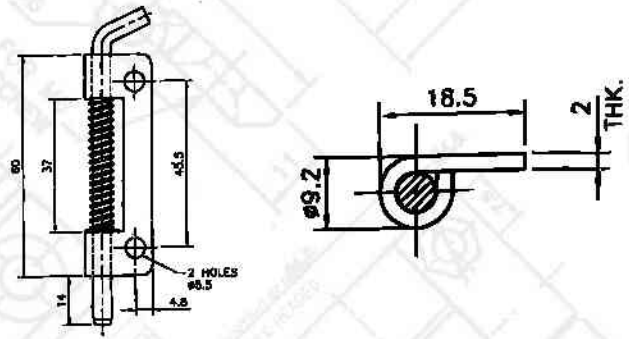
RHI 22

Spring Type Hinge

Material

MS - Steel

RHI 21

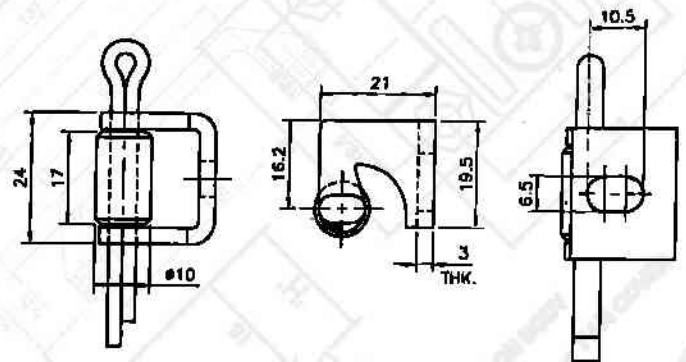


RHI 23

Spring Type Hinge with Hole

Material

MS - Steel



RHI 16

Pin type Hinge MS

RHI 16 S

Pin type Hinge SS



PANEL LOCK

LOCK ACCESSORIES

3 POINT LOCK

PANEL HANDLES

PANEL HINGES

AIR-VENT FAN FILTERS

DRAG CHAIN

KNOB

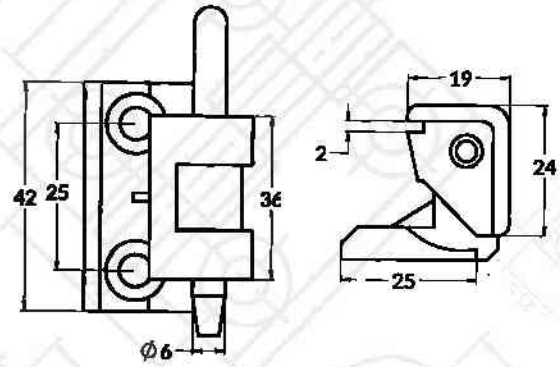
BUS-BAR

GROMMET

PVC YELLOW FERRULE

Wire ACCESSORIES

OTHER ACCESSORIES



RHI 39

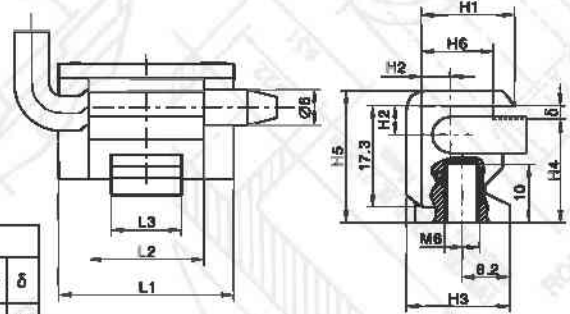
Concealed Hinge

Material

Zinc Die Cast Hinges



Dimensions									
H1	H2	H3	H4	H5	H6	L1	L2	L3	δ
16	8.2	17	16.5	21	12	30	18.5	12	2.3

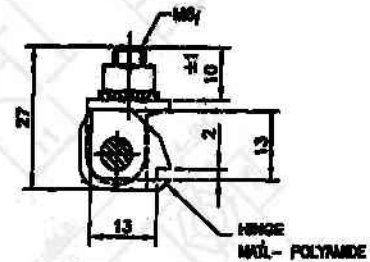
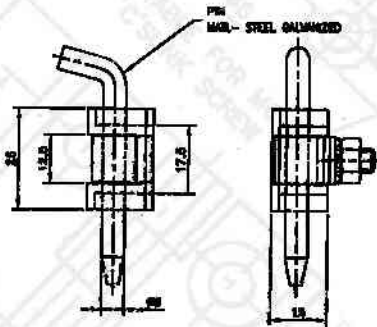


RHI 38

180 Degree Concealed Hinge

Material

Zinc Die Cast

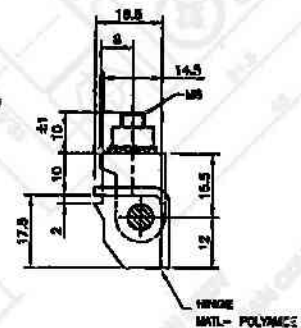
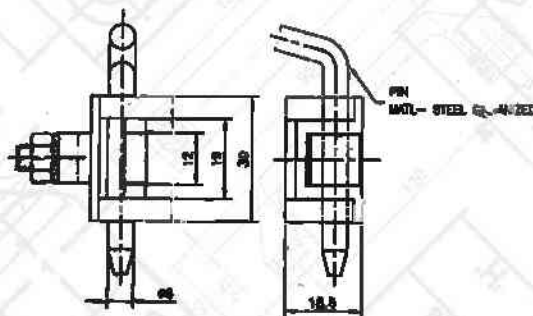


RHI 31

Concealed Hinge

Material

Polyamide



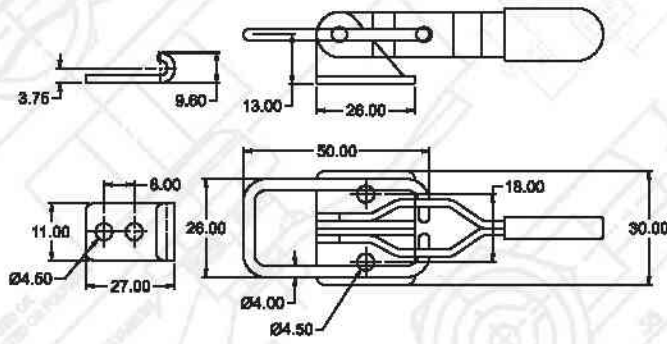
RHI 32

Concealed Hinge

Material

Polyamide Hinge



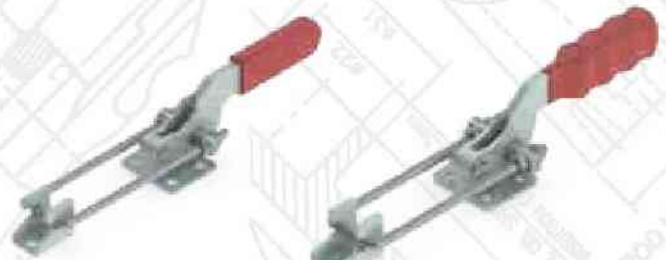
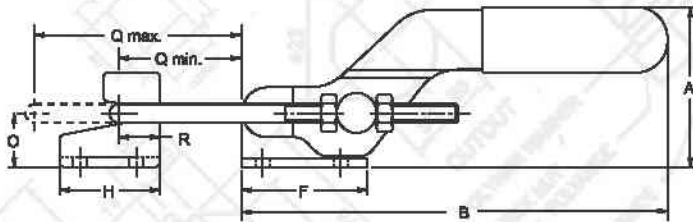


Holding Capacity: 50 Kgs.  
Weight: 0.060 Kgs.

Also Available  
In Stainless Steel  
PA - 325 - SS

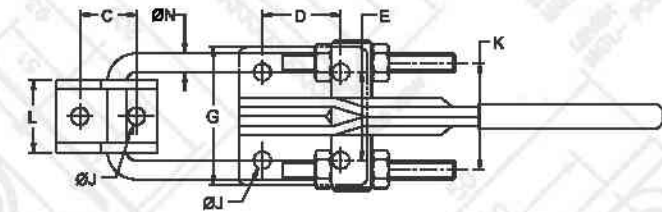


MS 325	Toggle Clamp	Material	MS / SS
--------	--------------	----------	---------



Model No. PAH - 1210

Model No. PAH - 1725



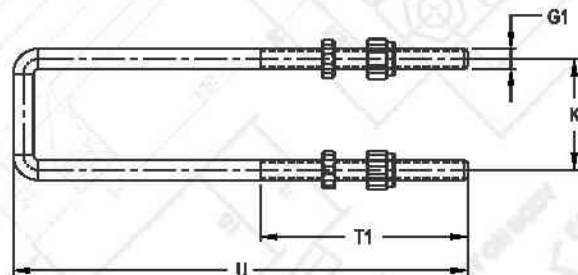
Model No. PAH - 1515

Also Available  
in Stainless Steel  
PAH - 1210 - SS  
PAH - 1515 - SS  
PAH - 1725 - SS

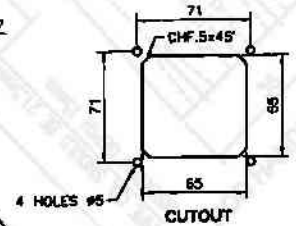
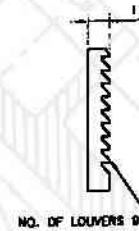
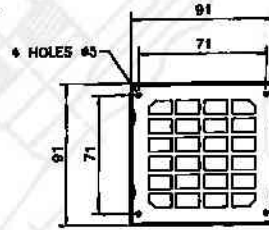
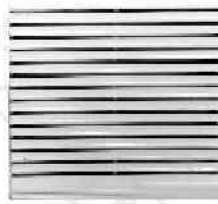
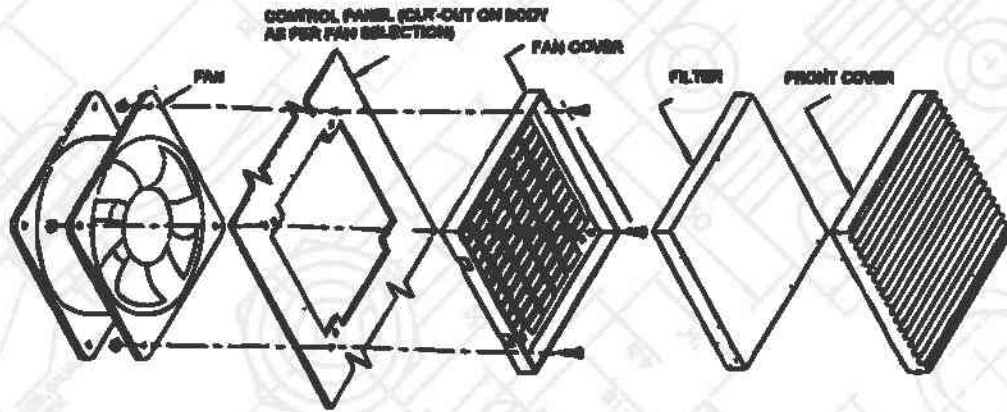
Model No.	Holding Capacity	Weight	Drawing Movement	Dimensions															
				A	B	C	D	E	F	G	H	ØJ	K	L	ØN	O	Q Min	Q Max	R
PAH - 1210	100 Kgs	0.100	48.0	32	96	11	16	20	26	30	20	4.5	21	15	4	12	23.0	56.0	9
PAH - 1515	200 Kgs	0.220	44.0	45	123	11	20	32	35	45	25	6.5	28	19	5	15	38.0	70.0	13
PAH - 1725	350 Kgs	0.350	50.0	52	148	18	25	28	40	45	33.5	8.5	33	23	6	18.5	40	76.0	18.5

Optional U-Bolt Configuration  
Use the below number for additional long U-Bolts

Model No	U Bolt Part Number	SS - U Bolt Part Number	U	T1	G1	K
PAH - 1210	M49045	M49045 - SS	90			
PAH - 1210 - M25	M411545	M411545 - SS	115	45	M4	21
PAH - 1515	M511045	M511045 - SS	110			
PAH - 1515 - M25	M513545	M513545 - SS	135	45	M5	28
PAH - 1515 - M50	M516045	M516045 - SS	160			
PAH - 1725	M613055	M613055 - SS	130			
PAH - 1725 - M25	M615555	M615555 - SS	155	55	M6	33
PAH - 1725 - M50	M618055	M618055 - SS	180			



# ASSEMBLY OF AIR VENTS / FAN FILTER

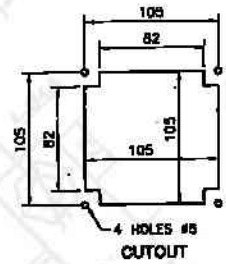
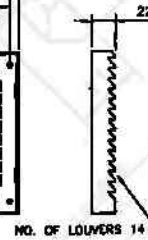
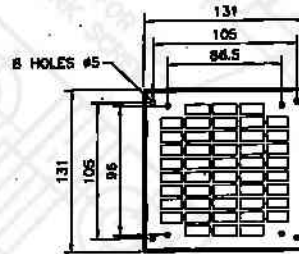


3 inch Box

80 mm x 80 mm Box Type

RAY 080

ABS

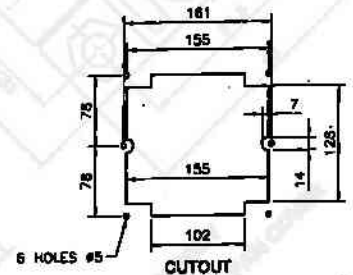
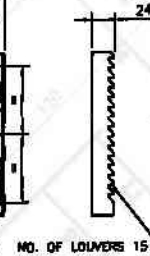
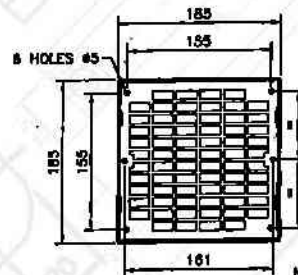
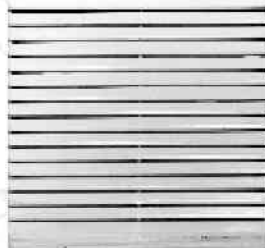
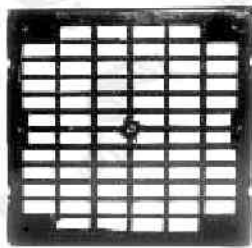


4 inch -Box

130 mm x 130 mm Box Type

RAY 130

ABS



6 inch - Box

184 mm x 84 mm Box Type

RAY 184

ABS

PANEL LOCK

LOCK ACCESSORIES

3 POINT LOCK

PANEL HANDLES

PANEL HINGES

AIR-VENT FAN FILTERS

DRAG CHAIN

KNOB

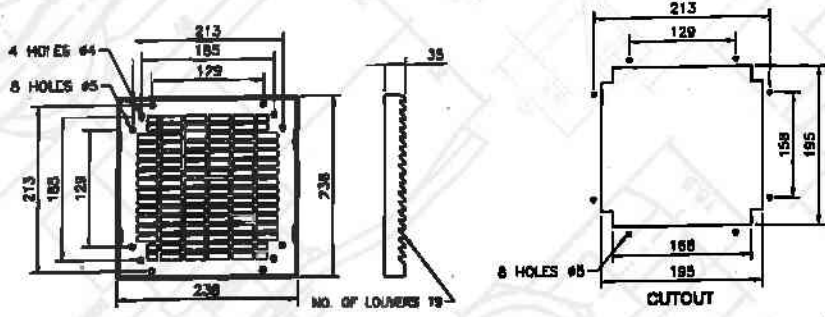
BUS-BAR

GROMMET

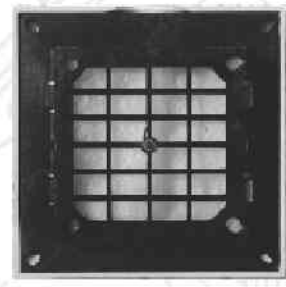
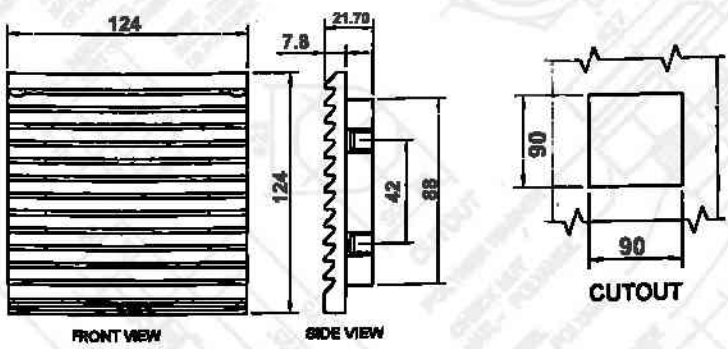
PVC YELLOW FERRULE

Wire ACCESSORIES

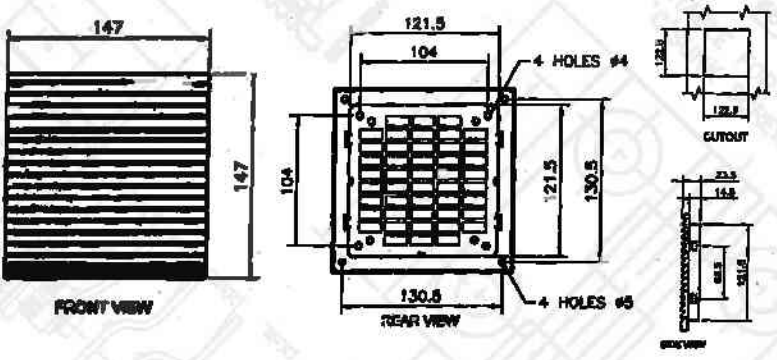
OTHER ACCESSORIES



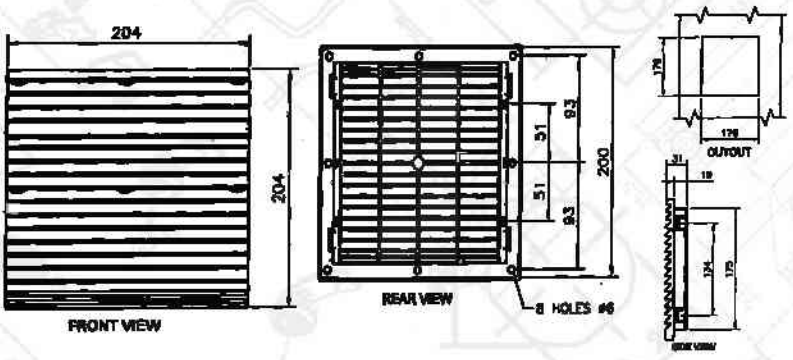
8 inch - Box      238 mm x 238 mm Box      RAV 238      ABS



3 inch - Snap      80 mm x 80 mm Snap      RAV 080S      ABS



4 inch - Snap      147 mm x 147 mm Snap      RAV 147      ABS



6 inch - Snap      203 mm x 203 mm Snap      RAV 203      ABS

PANEL LOCK

LOCK ACCESSORIES

3 POINT LOCK

PANEL HANDLES

PANEL HINGES

AIR-JET FAN FILTERS

DRAG CHAIN

KNOB

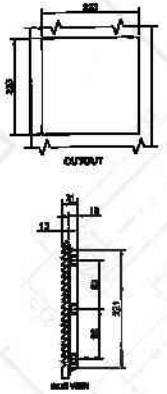
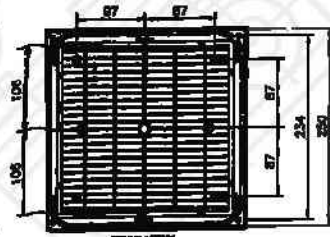
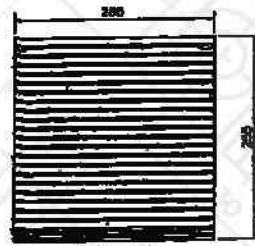
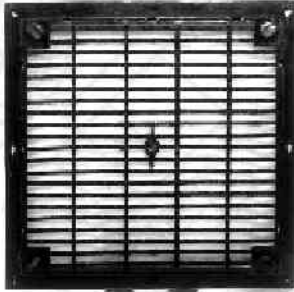
BUS-BAR

GROMMET

PVC YELLOW FERRULE

Wire ACCESSORIES

OTHER ACCESSORIES

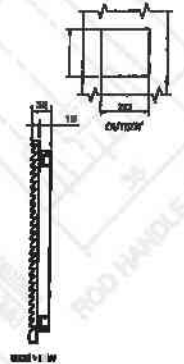
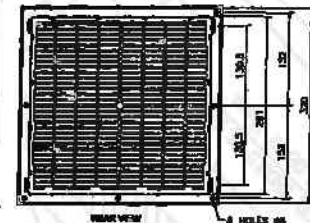


8 inch - Snap

252 mm x 252 mm Snap

RAV 255

ABS

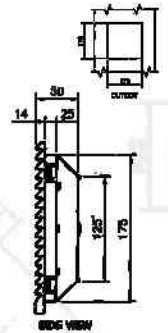
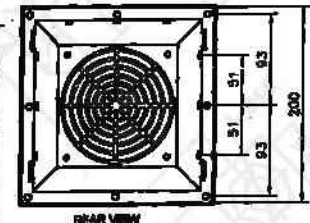
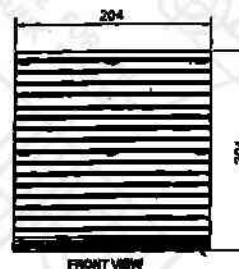
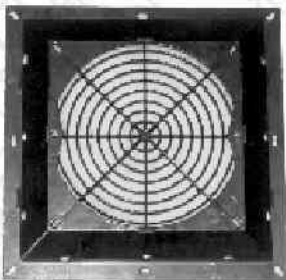


12 inch - Snap

325 mm x 325 mm Snap

RAV 325

ABS

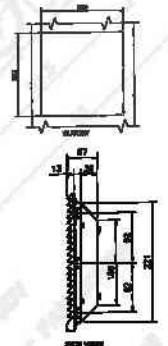
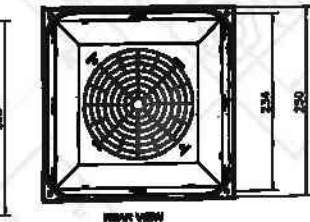
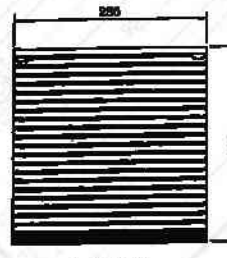
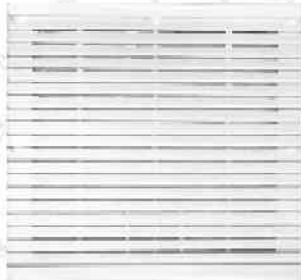
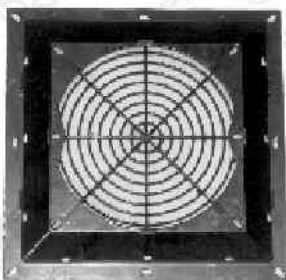


6 Inch - Dom

203 mm x 203 mm Snap with Dom

RAV 203 D

ABS



8 Inch - Dom

252 mm x 252 mm Snap with Dom

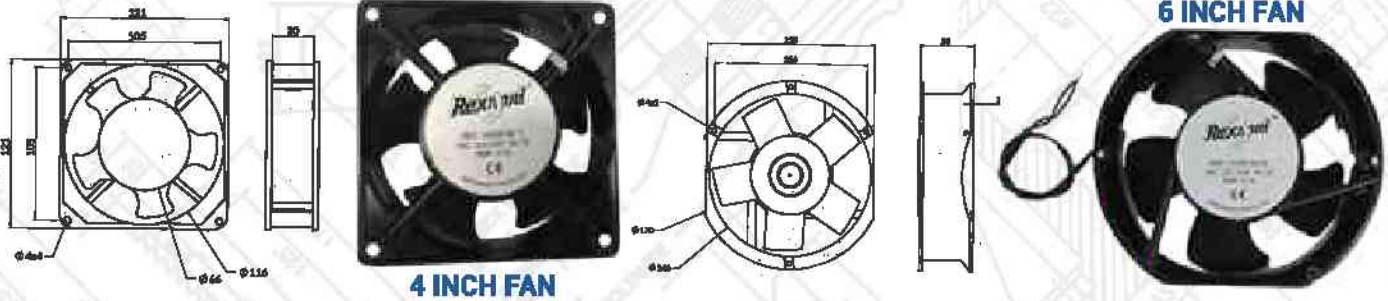
RAV 252 D

ABS



**We can Print Your Company Name on Airvent**

**FAN**

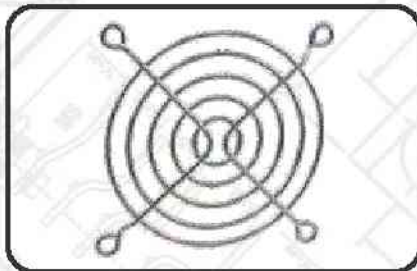


**4 INCH FAN**

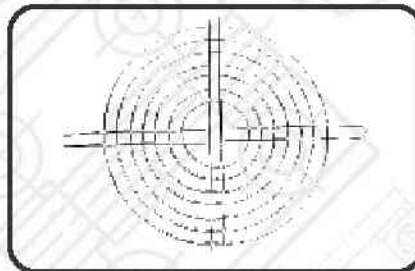
**6 INCH FAN**

**3", 4" , 6" & 8" FAN AVAILABLE**

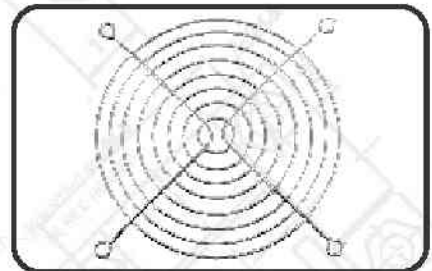
**FAN GRILL**



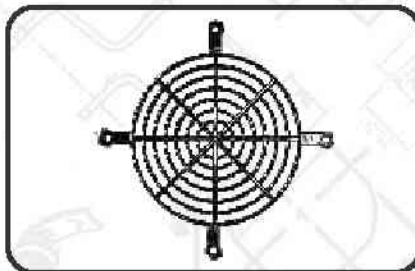
**4 INCH METAL GRILL**



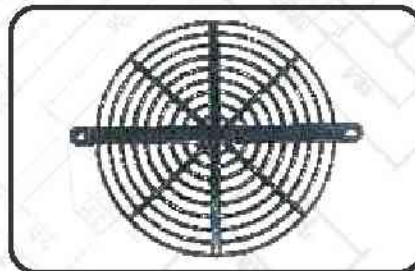
**6 INCH METAL GRILL**



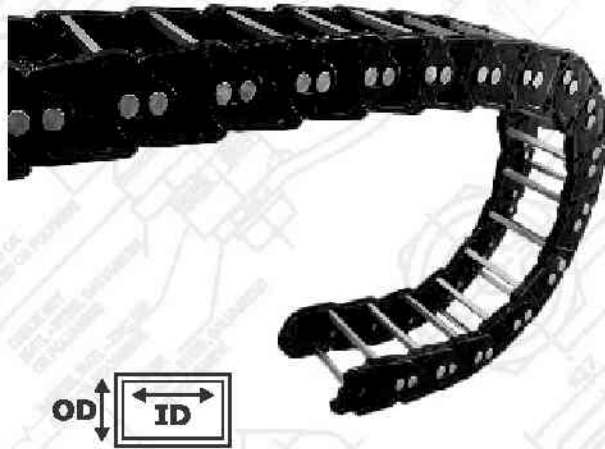
**8 INCH METAL GRILL**



**4 INCH NYLON GRILL**



**6 INCH NYLON GRILL**



## V - A SERIES DRAG CHAIN

Sr.	Code	Dimention	
		ID (mm)	OD (mm)
1	V-A-65	50 X 65	72 X 110
2	V-A-75	50 X 75	72 X 123
3	V-A-100	50 X 100	72 X 148
4	V-A-125	50 X 125	72 X 173
5	V-A-150	50 X 150	72 X 198
6	V-A-175	50 X 175	72 X 223
7	V-A-200	50 X 200	72 X 248
8	V-A-250	50 X 250	72 X 298
9	V-A-300	50 X 300	72 X 330

Note= Drag chain length modifications can be possible.

**V - A Series Bending Radius - 192.5 mm**

## V - AC SERIES COVER TYPE DRAG CHAIN



Sr.	Code	Dimention	
		ID (mm)	OD (mm)
1	V-AC-65	50 X 65	72 X 110
2	V-AC-75	50 X 75	72 X 123
3	V-AC-100	50 X 100	72 X 148
4	V-AC-125	50 X 125	72 X 173
5	V-AC-150	50 X 150	72 X 198

Note= Drag chain length modifications can be possible.

**V - AC Series Bending Radius - 192.5 mm**

## V - B SERIES DRAG CHAIN



Sr.	Code	Dimention	
		ID (mm)	OD (mm)
1	V-B-50	35 X 50	50 X 90
2	V-B-75	30 X 75	50 X 95
3	V-B-100	30 X 100	50 X 115
4	V-B-125	30 X 125	50 X 140
5	V-B-150	30 X 150	50 X 165
6	V-B-175	30 X 175	50 X 190

Note= Drag chain length modifications can be possible.

**V - B Series Bending Radius - 150 mm**

## V - BC SERIES COVER TYPE DRAG CHAIN

Sr.	Code	Dimentlon	
		ID (mm)	OD (mm)
1	V-BC-50	35 X 50	50 X 90
2	V-BC-75	30 X 75	50 X 95
3	V-BC-100	30 X 100	50 X 115
4	V-BC-125	30 X 125	50 X 140
5	V-BC-150	30 X 150	50 X 165

Note= Drag chain length modifications can be possible.

**V - BC Series Bending Radius - 150 mm**



## V - C SERIES DRAG CHAIN

Sr.	Code	Dimentlon		Bending Radius
		ID (mm)	OD (mm)	
1	V-C-15	15 X 12	23 X 15	35
2	V-C-35	25 X 35	35 X 45	102
3	V-C-75	25 X 75	35 X 90	118

**V - C Series end Clamps Available**



## V - D SERIES DRAG CHAIN

Sr.	Code	Dimentlon	
		ID (mm)	OD (mm)
1	V-D-28	22 X 28	30 X 48
2	V-D-44	22 X 44	30 X 65

**V - D Series Bending Radius - 55 mm**



## V - E SERIES DRAG CHAIN

Sr.	Code	Dimentlon	
		ID (mm)	OD (mm)
1	V-E-50	55 x 50	65 x 70
2	V-E-75	55 x 75	65 x 95
3	V-E-100	55 x 100	65 x 120

**V - E Series Bending Radius - 115 mm**



**BOLT TYPE KNOB**


Level Pad

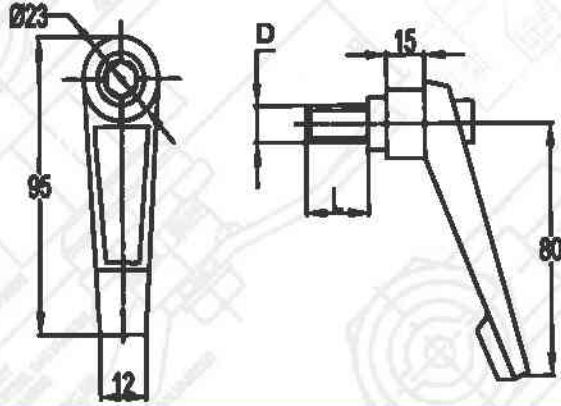


Sr.	Bolt Size	Length	M	N	O
1.	1/4	1"	24.4	9.1	6.1
2.	1/4	1/1/4	24.4	9.1	6.1
3.	1/4	1/1/2	24.4	9.1	6.1
4.	1/4	2"	24.4	9.1	6.1
5.	3/16	1"	24.4	9.1	6.1
6.	3/16	1/1/4	24.4	9.1	6.1
7.	3/16	1/1/2	24.4	9.1	6.1
8.	M4	25 to 50 mm	24.4	9.1	6.1
9.	M5	15 to 50 mm	24.4	9.1	6.1
10.	M6	15 mm	24.4	9.1	6.1
11.	M6	20 mm	24.4	9.1	6.1
12.	M6	25 mm	24.4	9.1	6.1
13.	M6	30 mm	24.4	9.1	6.1
14.	M6	35 mm	24.4	9.1	6.1
15.	M6	40 mm	24.4	9.1	6.1
16.	M6	50 mm	24.4	9.1	6.1
11.	M8	15 to 50 mm	34	9.1	10
12.	T Type	10 to 50 mm	40.2	10.2	9.5
13.	Level Pad	8 x 20 mm			
14.	Level Pad	3/8" x 1/1/4"			

**Insert Knob**

Sr.	Description	Diameter of Knob	Thread in Knob
1	Tapper Knob	40 mm	1/2", 3/8", M10, M12
2	Tapper Knob	32 mm	3/8", 5/16", M8, M10
3	Tapper Knob	25 mm	5/16", 1/4", M6, M8
4	Round Knob	50 mm	5/8", 1/2", M12, M16
5	Round Knob	40 mm	1/2", 3/8", M10, M12
6	Round Knob	32 mm	3/8", 5/16", M8, M10
7	Round Knob	25 mm	1/4", 5/16", M6, M8
8	Seven Star	40 mm	3/8", M10, M8
9	Seven Star	50 mm	5/16", 1/4", 3/8", M8, M10





Sr.	Description	D	L
1	40 x M5	M5	15 to 25 mm
2	40 x M6	M6	15 to 30 mm
3	60 X M8	M8	20 to 50 mm
4	80 X M10	M10	20 x 50 mm
5	95 X M12	M12	25 x 60 mm
6	110 X M16	M16	30 x 70 mm

### WHEEL TYPE KNOB

Sr.	Center Thread	Diameter
1	10 mm	80 mm
2	10 mm	100 mm
3	12 mm	100 mm
4	12 mm	125 mm
5	16 mm	125 mm
6	18 mm	160 mm
7	20 mm	200 mm
8	26 mm	250 mm



### HAND WHEEL STEERING TYPE KNOB

Sr.	Diameter
1	75 mm
2	100 mm
3	150 mm



## COPPER BUS BAR



Sr.	Size	Bus Bar Length in mm
1	9 mm hole Busbar	12 x 3 x 140 mm
2	Busbar 12x5x185 mm	185
3	Busbar 12x5x225 mm	225
4	Busbar 12x5x400 mm	400
5	Busbar 30x10x1100 mm	1100
6	Busbar 30x10x180 mm	180
7	Busbar 30x10x215 mm	215
8	BusBar 30x10x275 mm	275
9	Busbar 30x10x300 mm	300
10	Busbar 30x10x335 mm	335
11	Busbar 30x10x465 mm	465
12	Busbar 30x10x535 mm	535
13	Busbar 30x10x605 mm	605
14	Busbar 30x10x820 mm	820
15	Busbar 30x10x880 mm	880
16	Busbar 30x10x970 mm	970
17	BusBar 30x5x1000 mm	1000
18	Busbar 30x5x235 mm	235
19	Busbar 30x5x260 mm	260
20	Busbar 30x5x320 mm	320
21	Busbar 30x5x380 mm	380
22	Busbar 30x5x415 mm	415
23	Busbar 30x5x475 mm	475
24	Busbar 30x5x540 mm	540
25	Busbar 30x5x810 mm	810

**CUSTOMIZE SIZE IS AVAILABLE AS PER REQUIREMENTS**



## HEAT SINKABLE SLEEVE (BUS-BAR SLEEVE)

Sr.	Size	Bus Bar Size
1	20 mm	12 x 3, 9 x 6 mm
2	25 mm	12 x 6, 12 x 9, 15 x 16, 20 x 3mm
3	30 mm	16 x 6, 19 x 6, 20 x 3 mm
4	35 mm	20 x 6, 25 x 3 mm
5	41 mm	25 x 6, 25 x 10, 25 x 12 mm
6	48 mm	25 x 12, 30 x 6, 30 x 10 mm
7	55 mm	30 x 12, 38 x 6 mm
8	61 mm	38 x 9, 38 x 12, 40 x 6, 40 x 10 mm
9	73 mm	50 x 6 mm
10	81 mm	50 x 10, 50 x 12 mm
11	85 mm	60 x 6 mm
12	93 mm	60 x 12, 75 x 6 mm
13	103 mm	75 x 10, 75 x 12 mm
14	110 mm	90 x 6, 90 x 12 mm
15	128 mm	100 x 6, 100 x 10 mm
16	140 mm	100 x 12 mm
17	150 mm	120 x 6 mm
18	170 mm	125 x 6, 125 x 12, 150 x 6 mm
19	190 mm	150 x 6, 150 x 10, 150 x 12 mm
20	210 mm	175 x 6, 175 x 10, 175 x 12 mm
21	230 mm	200 x 6, 200 x 12 mm

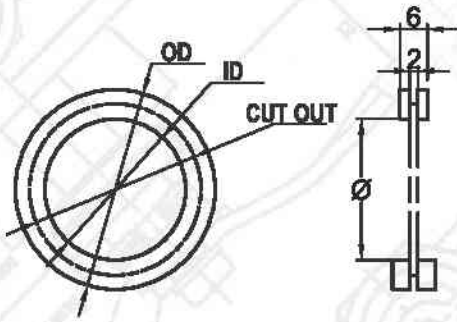
**Undergo unto 40% Shrinkage at 90 - 95 Degree C**  
**Thickness of Sleeve : 150 Micron**  
**Standard Roll in 50 Meters**



## BUS-BAR SLEEVE HOT GUN



### RUBBER GROMMET



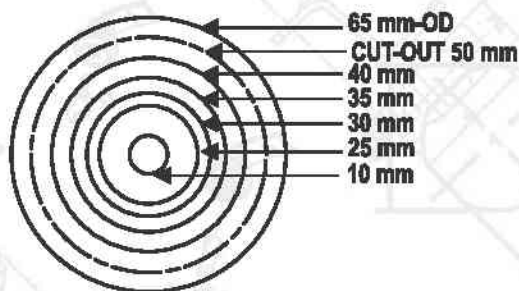
SR.	Cut-out	OPEN		CLOSE	
		ID	OD	ID	OD
1	10 mm	8	14	8	14
2	12 mm	9	15	9	15
3	16 mm	12	19	12	19
4	19 mm	16	24	16	24
5	22.5 mm	18	26	18	26
6	25 mm	22	31	22	31
7	30 mm	26	38	26	38
8	40 mm	33	48	33	48
9	50 mm	45	59	45	59
10	65 mm	59	74	59	74

### PVC GROMMET



SR.	Cut-out	OPEN		CLOSE	
		ID	OD	ID	OD
1	12 mm	9.5	15	9.5	15
2	16 mm	12	18	12	18
3	19 mm	15.5	23.5	15.5	23.5
4	22.5 mm	19	27	19	27
5	25 mm	21	28.5	21	28.5
6	30 mm	26	38	26	38
7	43 mm	40	48.5	40	48.5
8	50 mm	48	55.5	48	55.5

### UNIVERSAL RUBBER GROMMET



• In a Single Grommet Various Cut Sizes can be possible

## PVC YELLOW FERRULE

Sr.	Size
1	Small T
2	Big T
3	0.5 Sq. mm.
4	0.65 Sq. mm.
5	1.0 Sq. mm.
6	1.5 Sq. mm.
7	2.5 Sq. mm.
8	4.0 Sq. mm.
9	6.0 Sq. mm.
10	10.0 Sq. mm.
11	16.0 Sq. mm.
12	25.0 Sq. mm.
13	35.0 Sq. mm.
14	50.0 Sq. mm.
15	ERT – 1 Color Ferrule
16	ERT – 2 Color Ferrule
17	1.5 Sq. mm Round Color
18	2.5 Sq. mm Round Color



## PRINTING SLEEVE

Sr.	Size	Sr.	Size
1	2.2 mm	10	5.2 mm
2	2.5 mm	11	5.5 mm
3	3.0 mm	12	6.0 mm
4	3.2 mm	13	6.3 mm
5	3.5 mm	14	6.5 mm
6	4.0 mm	15	7.0 mm
7	4.2 mm	16	8.0 mm
8	4.5 mm	17	10 mm
9	5.0 mm		



PANEL LOCK

LOCK ACCESSORIES

3 POINT LOCK

PANEL HANDLES

PANEL HINGES

AIR-VENT FAN FILTERS

DRAG CHAIN

KNOB

BUS-BAR

GROMMET

PVC YELLOW FERRULE

Wire ACCESSORIES

OTHER ACCESSORIES

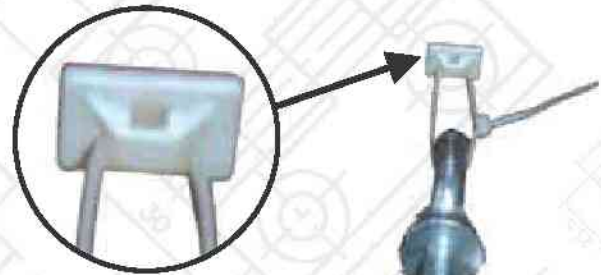
## CREDDLE / TIE MOUNT

Sr.	Size
1	19 x 19 – Regular
2	19 x 19 Heavy Duty
3	25x 25 – Regular
4	25 x 25 Heavy Duty



**19 x 19 Load Capacity  
upto 6 Kg**

**25 x 25 Load Capacity  
upto 10 kg**



**19 X 19 Heavy Duty**

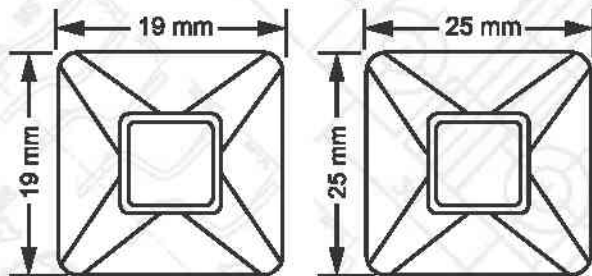


## FEATURES

- Screwable or self-adhesive versions.
- Simple to install with a screw or bolt
- Excellent security, particularly in areas of high vibration.
- Maximum surface area with adhesive to achieve high pull-off force.
- 4-way entry for cable tie for quicker and more flexible installation



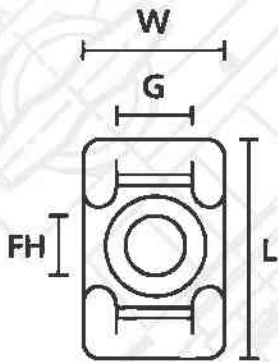
**6 KG Weight**



## APPLICATION

Where speed, simplicity and a firm fixing base are required these self adhesive clips are ideal. Particularly suitable for use in control cabinets, telecoms equipment or domestic appliances where the use of holes, screws, or nuts and bolts is impractical or undesirable.





for Hole (FH) 5.1 mm  
 Height (H) 9.40 mm  
 Length (L) 21.8 mm  
 Max. Tie Width (G) 7.9 mm  
 Strap Width max. (G) 0.31"

### SADDLE



### CREDDLE



## TERMINAL END CLAMPS



**SV-02**  
**MCB**  
**Side Clamp**



**SV-01**  
**MCB Terminal**  
**End Clamp**

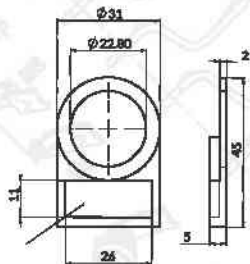


**80 X 80 X 40**  
**PVC TERMINAL BOX**



**Screw Type Saddle**

## LEGEND PLATES



**22.5 PVC**  
**LEGEND PLATE**



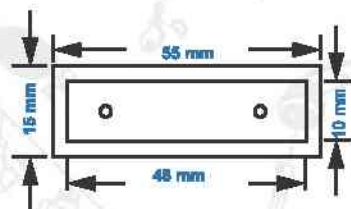
Blank



Computer Printed



Laser Printed



**50 X 15**  
**PVC LEGEND PLATE**



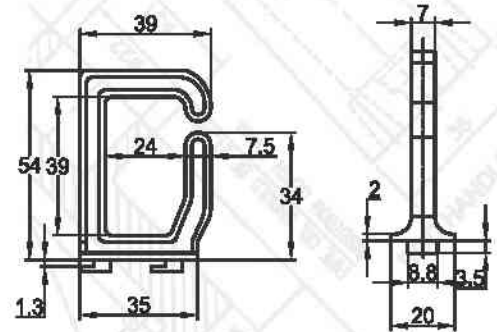
- PANEL LOCK
- LOCK
- ACCESSORIES
- 3 POINT LOCK
- PANEL HANDLES
- PANEL HINGES
- AIR-VENT
- FAN FILTERS
- DRAG CHAIN
- KNOB
- BUS-BAR
- GROMMET
- PVC YELLOW FERRULE
- Wire ACCESSORIES
- OTHER ACCESSORIES

### CABLE TIE



Sr.	Size	Sr.	Size
1	100 mm	6	368 mm
2	150 mm	7	450 mm
3	200 mm	8	550 mm
4	250 mm	9	750 mm
5	300 mm	10	1000 mm

### CABLE GUIDE CLIP



### SPARE PLATES / EXTRA CUTOUT PLATES

Sr.	Size	Sr.	Size
1	48 x 48	6	96 x 96 with cut out of 48 x 48 (ID)
2	72 x 72	7	96 x 96 with cut out of 72 x 72 (ID)
3	72 x 72 with cut out of 48 x 48 (ID)	8	Meter Glass 96 x 96 Screw Type transparent
4	48 x 96	9	Meter Glass 96 x 96 Snap Type transparent
5	96 x 96	10	Meter Glass 198 x 96 Snap Type transparent





## PVC CHANNEL

Sr.	Size H x W (mm)
1	25 x 25
2	30 x 25
3	40 x 30
4	45 x 25
5	45 x 45
6	45 x 60
7	60 x 25
8	60 x 45
9	60 x 60
10	75 x 25
11	75 x 45
12	75 x 60
13	75 x 75
14	80 x 25
15	80 x 45
16	80 x 80
17	100 x 100

Note: P2 & P3 slots will be available



## TERMINAL CHANNEL

Sr.	Size
1	MCB Channel
2	Terminal Channel (C Type)
3	Micro Channel
4	MCB Deep Channel



## Z CLAMP (MCB CHANNEL CLAMP)

Sr.	Size
1	Z Clamp



PANEL LOCK

LOCK  
ACCESSORIES

3 POINT LOCK

PANEL HANDLES

PANEL HINGES

AIR-VENT  
FAN FILTERS

DRAG CHAIN

KNOB

BUS-BAR

GROMMET

PVC YELLOW  
FERRULE

Wire  
ACCESSORIES

OTHER  
ACCESSORIES



### FLEXIBLE POLYAMIDE CONDUITS

Sr.	Size	OD	ID	STD Packing
1	PG 7	10	6.5	100
2	PG 9	13	10	100
3	PG 11	15.8	12	50
4	PG 13.5	18.5	14.3	50
5	PG 16	21.2	17	50
6	PG 21	28.5	23	50
7	PG 29	34.5	29	25
8	PG 36	42.5	36	25
9	PG 48	54.5	48	25



### FLEXIBLE POLYAMIDE CONDUITS GLAND

Sr.	Size	Sr.	Size
1	PG 7	6	PG 21
2	PG 9	7	PG 29
3	PG 11	8	PG 36
4	PG 13.5	9	PG 48
5	PG 16		



### PVC CORRUGATED PIPE

Sr.	Size
1	16 mm
2	20 mm
3	25 mm
4	32 mm
5	40 mm
6	50 mm



### PVC CORRUGATED PIPE FITTINGS

Sr.	Size
1	CP 16
2	CP 20
3	CP 25
4	CP 32
5	CP 40
6	CP 50

## PVC PIPE METAL BREADED (SWR)

Sr.	Size in mm
1	10 x 15
2	15 x 20
3	20 x 25
4	25 x 30
5	30 x 35
6	40 x 45
7	50 x 55



## PIPE FITTINGS FOR METAL BREADED PIPE

Sr.	Size
1	10 x 15 PPF 9
2	15 x 20 PPF 13.5
3	20 x 25 PPF 16
4	25 x 30 PPF 21
5	30 x 35 PPF 29
6	40 x 45 PPF 40
7	50 x 56 PPF 48



## PVC PIPE COUPLER

Sr.	Size in mm
1	10 x 15
2	15 x 20
3	20 x 25
4	25 x 30
5	30 x 35
6	40 x 45



## ABS PUSH BUTTON BOX

Sr.	Size	Sr.	Size
1	1 way	4	4 way
2	2 way	5	5 way
3	3 way	6	6 way



## SELF-ADHESIVE GASKET

### Single Side Eva Foam Type Gasket



Sr.	Size in mm
1	10 x 3
2	10 x 5
3	15 x 3
4	15 x 5
5	20 x 3
6	20 x 5
7	25 x 3
8	25 x 5
9	30 x 3
10	30 x 5
11	40 x 3
12	40 x 5
13	50 x 3
14	50 x 5



### Foam (D) Type Rittal Gasket

Size : 12 x 5, 15 x 7, 20 x 7, 25 x 10 mm

## EPDM GASKET

Sr.	Size
1	EPDM Gasket with side bubble
2	EPDM Gasket with top bubble
3	U Rubber Gasket
4	Two Way Sheet Metal Gasket

Sr.	Size
5	U Type with Metal Braided Gasket
6	U Type Rubber Gasket
7	Foam Type Gasket
8	S Type Glass Door Gasket



## EPOXY POWER TERMINAL (TPN)

Sr.	Size	DMC	
1.	63 amp	3 way	4 way
2.	100 amp	3 way	4 way



## EPOXY ROUND SUPPORT

Sr.	Size in mm	Sr.	Size in mm
1	25 x 6	5	40 x 10
2	30 x 6	6	50 x 10
3	30 x 8	7	60 x 12
4	40 x 8	8	70 x 12



## EPOXY L SUPPORT (SMC-DMC)

Sr.	Size
1	L - 60
2	L - 85
3	L - 105
4	L - 125
5	L - 150



## EPOXY FINGER SUPPORT

Sr.	Size	SMC - DMC & W - K Types			
1.	6 mm	1 way	2 way	3 way	4 way
2.	10 mm	1 way	2 way	3 way	4 way
3.	12 mm	1 way	2 way	3 way	4 way



PANEL LOCK

LOCK  
ACCESSORIES

3 POINT LOCK

PANEL HANDLES

PANEL HINGES

AIR-VENT  
FAN FILTERS

DRAG CHAIN

KNOB

BUS-BAR

GROMMET

PVC YELLOW  
FERRULE

Wire  
ACCESSORIES

OTHER  
ACCESSORIES



### DOCUMENT HOLDER

Sr.	Size
1	A4
2	A5



### NYLON CAP FOR HEX BOLT

Sr.	Size	Sr.	Size
1	6 mm	3	10 mm
2	8 mm	4	12 mm



### CAGE NUT

Sr.	Size
1	M5
2	M6
3	M8



### BRASS THREAD REDUCER

Sr.	Size
1	M63 x PG 21
2	M63 x PG 36



### MCCB COVER

Sr.	Size
1	100 amp
2	200 amp
3	400 amp

## LUGS

Sr.	Size
1	0.5 Sq. mm to 50 Sq. mm End Sleeve
2	0.5 Sq. mm to 16 Sq. mm Twin End Sleeve
3	1.5, 2.5, 4-6 Sq. mm Snap-on Lug
4	1.5 Sq. mm to 150 Sq. mm Ring Terminal
5	1.5 Sq. mm to 1000 Sq. mm Aluminium Lug
6	1.5 Sq. mm to 1000 Sq. mm Aluminium Lug (Pin Type)
7	1.5 Sq. mm to 95 Sq. mm Copper Lug (Pin Type)



## PVC SPIRAL WHITE & BLACK COLOR

Sr.	Size	Sr.	Size
1	3 mm - 1/8	5	16 mm - 5/8
2	6 mm - 1/4	6	19 mm - 3/4
3	10 mm - 3/8	7	25 mm - 1"
4	12 mm - 1/2	8	38 mm - 1 1/2



## FERRULE PRINTING MACHINE CARTRIDGE

Sr.	Size
1	Canon Machine Cartridge (Black, Yellow, White)
2	MAX LETA-TWIN Cartridge LM390 (Black, Yellow, White)
3	MAX LETA-TWIN Cartridge LM550 (Black, Yellow, White)
4	Brother Black Cartridge (Black, Yellow, White)



PANEL LOCK

LOCK  
ACCESSORIES

3 POINT LOCK

PANEL HANDLES

PANEL HINGES

AIR-VENT  
FAN FILTERS

DRAG CHAIN

KNOB

BUS-BAR

GROMMET

PVC YELLOW  
FERRULE

Wire  
ACCESSORIES

OTHER  
ACCESSORIES

## PORCELAIN CONNECTOR



Sr.	Size
1	5 amp 2 way
2	15 amp 1 way
3	15 amp 2 way
4	30 amp 2 way
5	60 amp 2 way



**J & K Type Thermo Couple**



**K Type Socket**



**J Type Socket**

## PCB STUDS



Sr.	Size
1	4 x 11 mm to 4 x 100 mm Brass
2	6 x 20 mm to 6 x 100 mm Brass
3	4 x 20 mm PVC

## TERMINAL MARKER



Sr.	Size
1	White Marker – ELMEX
2	White Marker – Connect Well

## PVC CABLE BINDING ROLL & BUTTON



Sr.	Size
1	8 mm Binding Strip (Black, Grey)
2	PVC Button (Black, Grey)



## CABLE GLAND

Sr.	Threading	ID
1	PG 7	12.50 mm
2	PG 9	16.50 mm
3	PG 11	17 mm
4	PG 13.5	17.5 mm
5	PG 16	19 mm
6	PG 21	21.5 mm
7	PG 29	26.5 mm
8	PG 36	30.5 mm
9	PG 42	31 mm
10	PG 48	32 mm
11	PG 63	42.5 mm



## PVC COLOR SLEEVE

Sr.	Size
1	2 mm to 60 mm Sizes Available



## POLYTHENE WIRE HEAT SINKABLE SLEEVE

Sr.	Size
1	1 mm to 100 mm Sizes Available



## CRIMPING TOOL

Sr.	Description
1	Ring Type Lug Crimping Tool
2	End Sleeve Lug Crimping Tool
3	Hydraulic Crimping Tool



# NOTES

PANEL LOCK

LOCK  
ACCESSORIES

3 POINT LOCK

PANEL HANDLES

PANEL HINGES

AIR-VENT  
FAN FILTERS

DRAG CHAIN

KNOB

BUS-BAR

GROMMET

PVC YELLOW  
FERRULE

Wire  
ACCESSORIES

OTHER  
ACCESSORIES



+91 83065 20468  
+91 83066 20468



info@verixengineers.com  
sales@verixengineers.com



www.ravi-enterprise.com  
www.verixengineers.com







**MFG. : CONTROL PANEL ACCESSORIES**

Vatva, Ahmedabad, Gujarat



**RAVI ENTERPRISE**  
PANEL BOARD ACCESSORIES

## CONTACT DETAILS

**Corporate Office:**

30/A/9/B, Karma Estate, Trikampura Patia,  
G.I.D.C., Phase IV, Vatva, Ahmedabad - 382 445 Gujarat INDIA.

**Mobile:** +91 93774 20468, +91 83066 20468, 83065 20468.

**Email:** info@verixengineers.com, sales@verixengineers.com

**Web.:** www.verixengineers.com / www.ravi-enterprise.com

