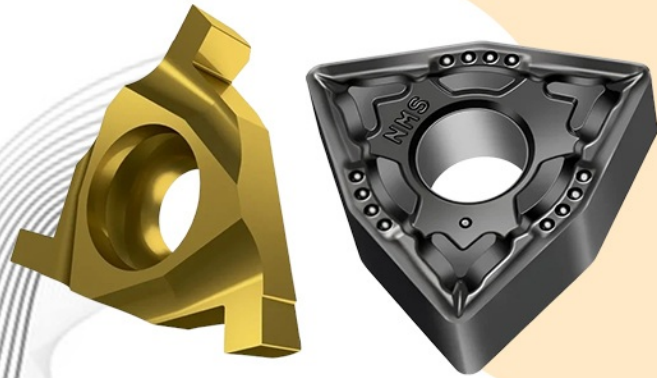




# Carbide Inserts

Customer faith well-kept for lifetime.



APMT 1135PDER Carbide Inserts, APMT 1604 Milling Inserts, APMT1135PDER P Cnc Insert, APMT1604PDER K Cnc Insert, APMT1604PDER M Cnc Insert, APMT1604PDER Milling Insert, APMT1604PDER P Cnc Insert, Apmt 1135 Milling Inserts, CCMT 060204 Carbide Inserts, CCMT 09T308 Carbide Inserts, CCMT09T302-04-08 Cnc Insert, CNC Carbide Inserts, CNMA 120408 Carbide Inserts, CNMG 120404 Turning Carbide Insert, CNMG 120408 Carbide Insert, etc.



SNMA 120412 INSERTS



LNMU0303 CARBIDE INSERTS



VNMG 160408 CARBIDE INSERT



## About Us

Prysm Global Tooling Solutions operates as a manufacturer, trader, and supplier dedicated to delivering precision-engineered tooling solutions for modern machining and metalworking industries. Grooving Circlip Inserts, Carbide Turning Inserts, CNC Carbide Inserts, and Carbide Threading Inserts, and a wide range of industrial products. The company focuses on accuracy, durability, and consistent performance to support demanding industrial applications and production environments.

Based in the industrial powerhouse of Mumbai, Maharashtra, Prysm Global Tooling Solutions is a forward-thinking manufacturer, trader, and supplier established in 2025. The company specializes in the precision engineering and distribution of high-performance cutting tools designed for advanced machining and metalworking applications. The primary product range features Grooving Circlip Inserts, Carbide Turning Inserts, CNC Carbide Inserts, Carbide Threading Inserts, and other related products. Operating from a strategically located facility, the enterprise utilizes state-of-the-art metallurgical processes and specialized coatings to ensure every insert delivers exceptional wear resistance and thermal stability. Our infrastructure is designed to support the high-speed requirements of the automotive, aerospace, and general engineering sectors, providing tools that maintain tight tolerances even under heavy load. Prysm Global Tooling Solutions has developed a streamlined supplying facility and a robust distribution network that ensures the efficient delivery of precision components to manufacturing units across the country.



**Key Facts**

<b>No of Staff</b>	10
<b>Year of Establishment</b>	2025
<b>OEM Service Provided</b>	No

**Our Products**



**CNMG 120404 Turning Carbide Insert**



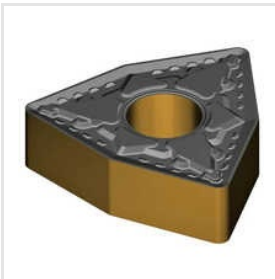
**WNMG 080408 Carbide Inserts**



**CNMG 120408 Carbide Insert**



**WNMG Carbide Inserts**



**WNMG 080412 Carbide Inserts**



**CNMA 120408 Carbide Inserts**



**VNMG 160408 Carbide Inserts**



**R6 ( RDKW1204MO ) Round Carbide Insert**



**TCMT 110204 Carbide Inserts**



**Grooving Circlip Inserts**



**TNMG 160412 Carbide Inserts**



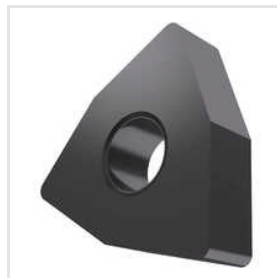
**WNMG 080404 Carbide Inserts**



**SPMG 07T308 Carbide Insert**



**DNMG 110408 Carbide Inserts**



**WNMA 080412 Carbide Inserts**



**TNMG 160408 Carbide Turning Insert**



ADDRESS

SHOP NO 3, GROUND FLOOR, THE  
NATIONAL SAODALITY CENTRE -  
SEVA NIKETAN BUILDING, K  
Kadam Marg, SIR J J ROAD  
BYCULLA, Mumbai Central,  
Mumbai, Maharashtra, India  
(400008).



EMAIL

[prysmglobaltools@gmail.com](mailto:prysmglobaltools@gmail.com)



MOBILE

+919820149199



WEBSITE

[www.prysmcnc.com](http://www.prysmcnc.com)



KEY PERSONNEL

**Rashida Pardawala**

(PROPRIETOR)