



FIRE SAFETY DEVICES PVT LTD

(ISO 9001 CERTIFIED COMPANY)

Mastering the chemistry behind fire extinguishing.

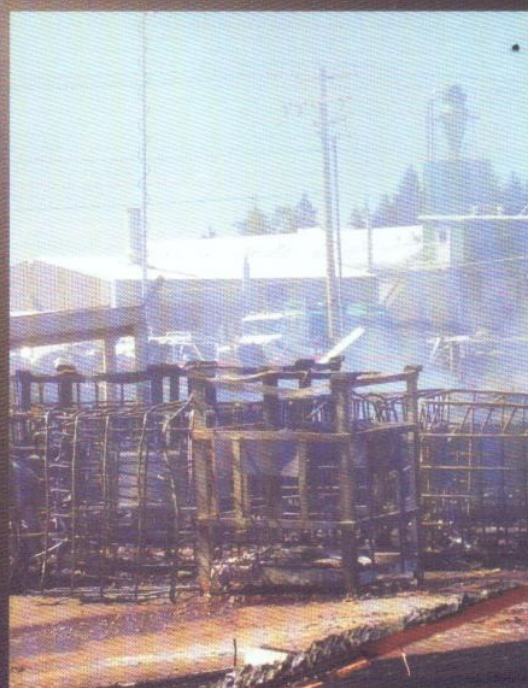
FREEZE FIRE TEC POWDER



COMBUSTIBLE



METALS



- Patented technology from Indian Space Research Organization.

- Freeze Fire TEC is a Ternary Eutectic Chloride based powder

FREEZE FIRE TEC POWDER

Freeze Fire TEC is a **Ternary Eutectic Chloride** based powder which has been treated with flow and moisture repellant additives. It is for Class D fires. This is suitable for extinguishing fires involving reactive metals like magnesium, sodium, zirconium, aluminum etc. Additionally it can also extinguish small oil fires and can also be used for electrical fires.

FEATURES

Patented technology from Indian Space Research Organization.

FREEZE FIRE TEC POWDER fuses at temperature of 600° c -650° c and has high latent heat of fusion forming a hard crust on the burning metal surface

FREEZE FIRE TEC is used extensively in industrial processes, engineering, and manufacturing and in scientific laboratories. It is also used by defense establishments and ordinance factories.

FREEZE FIRE TEC POWDER can be applied gently through a special metal fire extinguisher or can also be manually applied on the burning metal with the help of a scoop or a plastic bag.

Technical Parameters for Metal fire PROPERTY VALUES

APPEARANCE	Off-White, powder
APPARENT DENSITY	1.10-1.25 gms/sec
WATER REPELLENCY	< 0.5 %
MOISTURE CONTENT	< 0.2 %
HYDROSCOPICITY	<2%
VOLATILE MATTER	0.5 max
HEAT TEST	Passes the test

PACKAGING

FREEZE FIRE TEC is packed in 25Kg open top drums

APPROVALS :

- ISRO, Govt. of India
- Confirms to IS 4861 Standard.
- By any Third Party Inspecting Agency like Lloyds, DNV, BV etc
- Manufacturing & Quality System to ISO 9001:2008 & ISO 14001:2004



Fire Safety Devices Pvt Ltd.



Fire Chem

B-4, Second Floor, Rama Palace Commercial Complex
Sec- 20B, Near Ajronda Modh, Faridabad- 121007 [Haryana] India

Ph: +91-129-2288196/7/8, Fax: +91-129-2288700, Help line Ph. 24 Hours: +91-11-32537657

