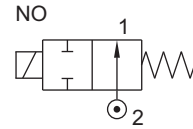


## 1/2 NORMALLY OPEN SOLENOID VALVE FOR TERMINAL/ GANTARY AUTOMATION

TYPE	PRESSURE

TYPE	PRESSURE

TYPE	PRESSURE
3275I	0 - 18 bar

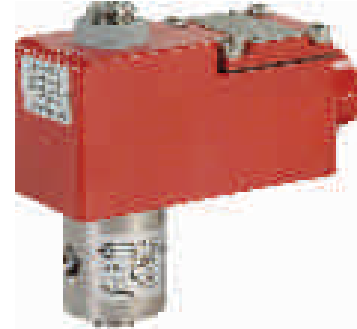


### FEATURES

- Bubble tight shut off
- Mounts in any position
- Vibration resistance up to 9g
- Suitable for high speed cycling
- Speed up to 800 cycles/ min
- Life >15 million cycles

### WETTED PARTS

Body	SS 316	Plunger, Insert	SS 430
Internals	SS 316	Seat, Seals	Viton GLT
Guide Assembly	SS 304	Fastener	SS 304
Spring	SS 302	Shadow ring	Copper



### SPECIFICATION

Valve Type	2/2 Direct Acting Normally Open
Body Material	SS316
Orifice	3
Port Connection	1/4" NPT(F)
Media	Petrol/ Diesel/ HSD SKO/ LPG
Pressure	0 - 18 bar
Seal	Viton GLT
Coil Voltage, Current	230V AC
Enclosure	Explosion Proof Ex d
Application	Petrol/ Diesel/ LPG/ SKO Dispensing
Model	-

### OPTION

Body Material	-	-
Orifice	-	-
Connection	-	-
Media	-	-
Seal	-	-
Voltage	Any	Any
Current	Any	Any
Enclosure	Weather Proof	Weather Proof
Solenoid Size	18	18
Extended	-	-
Application	-	-

### AMBIENT TEMPERATURE

-20°C to 70°C

### FLUID TEMPERATURE

-20°C to 70°C

### PORT CONNECTION

FUNCTION	INLET	OUTLET	
3275I	2	1	

Contact Rotex for any other ambient, fluid temperature, media and application.



For Valve type 3275I operated with AC voltage select in built full rectified solenoid with FR option

## 2/2 NORMALLY OPEN SOLENOID VALVE FOR TERMINAL/ GANTARY AUTOMATION

### SPECIFICATION

SIZE	PORT CONNECTION		PRE-SSURE bar		ORIFICE (mm)	FLOW FACTOR kv (LPM OF WATER @ 1 bar ΔP)	VALVE TYPE	PILOT PRESSURE	BODY MATERIAL AND INTERNALS					SEALS					MANUAL OVERRIDE			SOLENOID ENCLOSURE		SUFFIX	POWER VA			CONSTRUCTION REFERENCE NUMBER	
	BSP(F)	NPT(F)	MINIMUM	MAXIMUM					ALUMINIUM	ALUMINIUM + SS	BRASS (STD. PORT NPT)	SS 316 (STD. PORT NPT)	NBR	Viton	EPDM	HYTREL	PTFE	NIL	STAYPUT CUM MOMENTARY	MOMENTARY	FLYING LEAD	PLUG IN, IP67	SQ. PLUG IN, IP67		TERMINAL BOX IP67	EXPLOSION PROOF IIC, IP67	IS WITH CIRCUIT Ex ia IIC T6, IP67		SOLENOID SIZE
1/4"	2G	2R	0	21	2.2	2.5	3275I						B5	S2G	S8							E	18			20	20	20	
			0	18	3	4	3275I							B5	S2G	S8							E	18			20	20	20

Cable Entry	E	Ex emb
M20 x 1.5	FJ	iiTÜ iišVTÜ
1/2" NPT	Ff	iiþÜ iišþÜ

※ = Do not specify when opted for. Refer Page # 22 for Value of ※  
✓ = Options available

### DIMENSIONS

All Dimensions are in mm

