

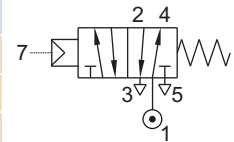
SERIES : 32P

5/2 AIR OPERATED, SPRING/ RETURN VALVE

TYPE	PRESSURE

TYPE	PRESSURE

TYPE	PRESSURE
53400	0 - 20 bar



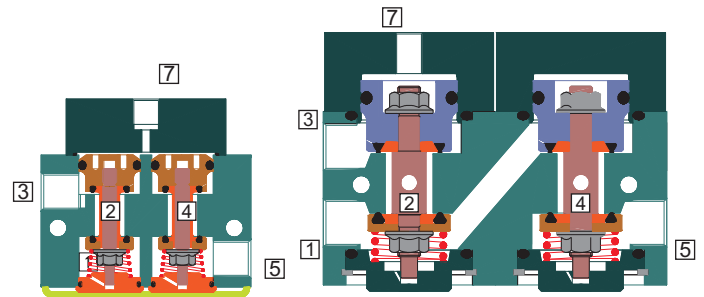
FEATURES

- Bubble tight shut off
- Mounts in any position
- Vibration resistance up to 9g
- Suitable for high speed cycling
- Speed up to 1000 cycles/ min. for Valve type 53400, 600 cycles/ min for valve type 53402
- Life >10 million cycles



WETTED PARTS

Code	※	B1	B2	B5
Body	Anodized Aluminium	Anodized Aluminium	Brass	SS 316
Internals	Aluminium, Brass and SS 316	SS 316	Brass and SS 316	SS 316
Spring/ Circlip	SS 302			
Fasteners	SS 304			
Seat, Seals	NBR, Viton, F.Silicon			



AMBIENT AND FLUID TEMPERATURE

-30 °C to 75 °C

SPECIAL VERSION AND SUFFIX

Suffix : (Valve) OX, AM,

MEDIA

Air, Inert gases, Oil, Water

SPARES

(Refer page 25 for ordering code)

SPARE KIT	CODE
Seal Kit : Oring Set	98
Repair Kit : Oring Set, Fastener, Springs	99

APPLICATION

Operation of double acting cylinder/ actuator

PORT CONNECTION

INLET	OUTLET	OUTLET	EXHAUST	EXHAUST	PILOT INLET
1	2	4	3	5	7

Contact Rotex for

- Any other ambient, fluid temperature, media and application



The pilot pressure should be minimum 2 bar or \geq main Fluid pressure whichever is higher
OIL Media Temperature Restricted from 0 °C to 100 °C



5/2 AIR OPERATED, SPRING/ RETURN VALVE

SPECIFICATION

SIZE	PORT CONNECTION		PRE-SURE bar		ORIFICE (mm)	FLOW FACTOR kv (LPM OF WATER @ 1 bar ΔP)	VALVE TYPE	PILOT PRESSURE	BODY MATERIAL AND INTERNALS					SEALS					MANUAL OVERRIDE		SOLENOID ENCLOSURE		SUFFIX		POWER VA		CONSTRUCTION REFERENCE NUMBER				
	BSP(F)	NPT(F)	MINIMUM	MAXIMUM					ALUMINIUM	ALUMINIUM + SS	BRASS (STD. PORT NPT)	SS 316 (STD. PORT NPT)	NBR	Viton	EPDM	HYTREL	F.Silicon	NIL	STAYPUT CUM MOMENTARY	MOMENTARY	FLYING LEAD	PLUG IN, IP67	SQ. PLUG IN, IP67	TERMINAL BOX IP67	FPJB Ex d IIC, T4 OR T6, IP67	LARGE ENCLOSURE		SOLENOID SIZE	OXYGEN	AMONIA	AC INRUSH
5/2 AIR OPERATED																															
1/4"	2G	2R	0	20	6	12	53400	2-20	*	B1	B2	B5	*	S2														✓			540
3/8"	3G	3R	0	20	6	12	53400	2-20	*	B1	B2	B5	*	S2														✓			545
1/2"	4G	4R	0	20	6	12	53400	2-20	*		B2	B5	*	S2													✓			545	

* = Do not specify when opted for. Refer Page # 22 for Value of *
 ✓ = Options available

* Valve type printed in red colour is external pilot air/ air operated valve

ORDERING CODE AND EXAMPLE VALVE

VALVE TYPE – SUFFIX – ORIFICE – PORT CONNECTION – BODY AND INTERNALS – SEAL - MEDIA
 e.g. 53400-6-2R-B2-S2

DIMENSIONS

All Dimensions are in mm

CONSTRUCTION REFERENCE : 540

