

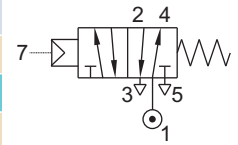
SERIES : 32P

5/2 AIR OPERATED, SPRING/ RETURN VALVE

TYPE	PRESSURE

TYPE	PRESSURE

TYPE	PRESSURE
53400	0 - 20 bar
53402	0 - 40 bar



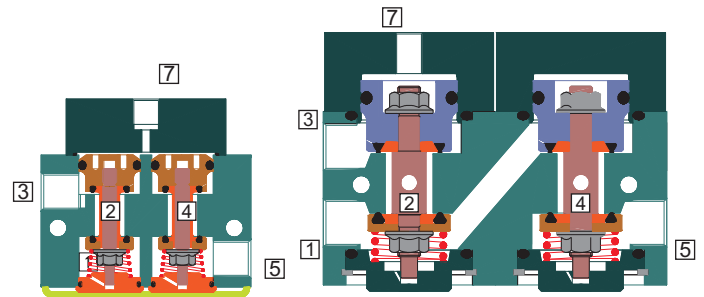
FEATURES

- Bubble tight shut off
- Mounts in any position
- Vibration resistance up to 9g
- Suitable for high speed cycling
- Speed up to 1000 cycles/ min. for Valve type 53400, 600 cycles/ min for valve type 53402
- Life >10 million cycles



WETTED PARTS

Code	※	B1	B2	B5
Body	Anodized Aluminium	Anodized Aluminium	Brass	SS 316
Internals	Aluminium, Brass and SS 316	SS 316	Brass and SS 316	SS 316
Spring/ Circlip	SS 302			
Fasteners	SS 304			
Seat, Seals	NBR, Viton, F.Silicon			



AMBIENT AND FLUID TEMPERATURE

-30 °C to 75 °C

SPECIAL VERSION AND SUFFIX

Suffix : (Valve) OX, AM,

MEDIA

Air, Inert gases, Oil, Water

SPARES

(Refer page 25 for ordering code)

SPARE KIT	CODE
Seal Kit : Oring Set	98
Repair Kit : Oring Set, Fastener, Springs	99

APPLICATION

Operation of double acting cylinder/ actuator

PORT CONNECTION

INLET	OUTLET	OUTLET	EXHAUST	EXHAUST	PILOT INLET
1	2	4	3	5	7

Contact Rotex for

- Any other ambient, fluid temperature, media and application



The pilot pressure should be minimum 2 bar or \geq main fluid pressure whichever is higher.



5/2 AIR OPERATED, SPRING/ RETURN VALVE

SPECIFICATION

SIZE	PORT CONNECTION		PRE-SURE bar		ORIFICE (mm)	FLOW FACTOR kv (LPM OF WATER @ 1 bar ΔP)	VALVE TYPE	BODY MATERIAL AND INTERNALS					SEALS					MANUAL OVERRIDE		SOLENOID ENCLOSURE		SUFFIX		POWER VA		CONSTRUCTION REFERENCE NUMBER						
	BSP(F)	NPT(F)	MINIMUM	MAXIMUM				ALUMINIUM	ALUMINIUM + SS	BRASS (STD. PORT NPT)	SS 316/CF8M (STD. PORT NPT)	NBR	Viton	EPDM	HYTREL	PTFE	NIL	STAYPUT CUM MOMENTARY	MOMENTARY	FLYING LEAD	PLUG IN, IP67	SQ. PLUG IN, IP67	TERMINAL BOX IP67	FPJB Ex d IIC, T4 OR T6, IP67	LARGE ENCLOSURE		SOLENOID SIZE	OXYGEN	AMONIA	AC INRUSH	AC HOLDING	DC
5/2 AIR OPERATED																																
1/4"	2G	2R	0	20	6	12	53400	2-20	×	B1	B2	B5	×	S2																✓		540
3/8"	3G	3R	0	20	6	12	53400	2-20	×	B1	B2	B5	×	S2																✓		545
			0	40	10	38	53402	2-40	×	B1	B2	B5	×	S2																✓		541
1/2"	4G	4R	0	20	6	12	53400	2-20	×	B1	B2	B5	×	S2																✓		545
			0	40	16	75	53402	2-40	×	B1	B2	B5	×	S2																✓		542
3/4"	6G	6R	0	40	20	110	53402	2-40	×	B1		B5	×	S2															✓		543	
1"	8G	8R	0	40	25	185	53402	2-40	×	B1		B5	×	S2															✓		544	

× = Do not specify when opted for
 ✓ = Options available

* Valve type printed in red colour is external pilot air/ air operated valve

ORDERING CODE AND EXAMPLE VALVE

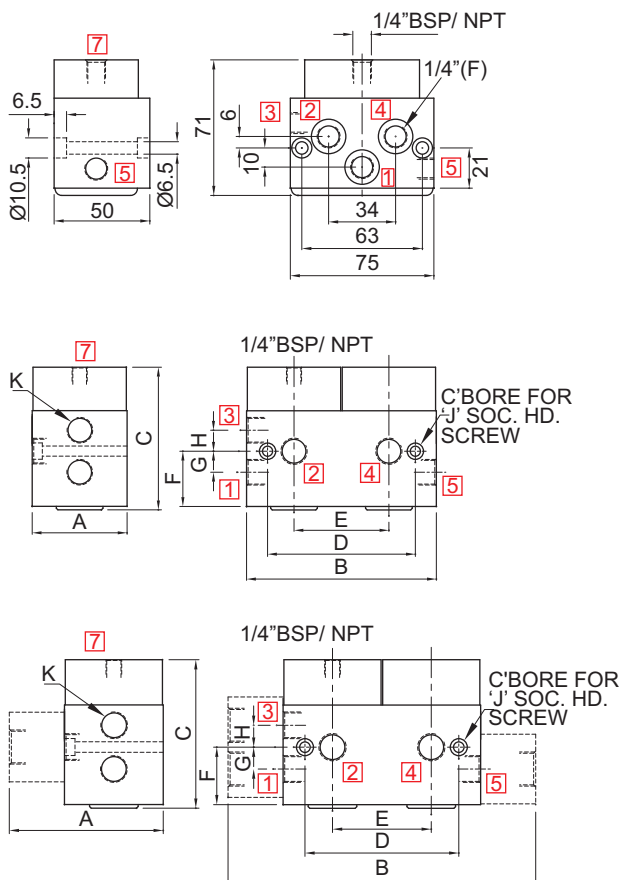
TYPE - SUFFIX - ORIFICE - PORT CONNECTION - BODY AND INTERNALS - SEAL

e.g. 53400-6-2R-B2

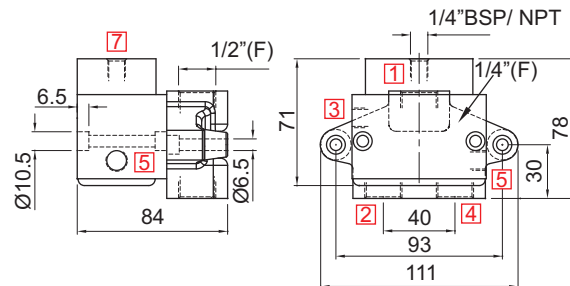
DIMENSIONS

All Dimensions are in mm

CONSTRUCTION REFERENCE : 540



CONSTRUCTION REFERENCE : 545



K (PORT SIZE)	A	B	C	D	E	F	G	H	J	CONST. REF.
VALVE TYPE : 53402-10, 16, 20										
3/8"	61	122	92	95	61	35.5	13.5	13.5	M6	541
1/2"	81	165	114	145	81	47.5	18	18	M8	542
3/4"	81	165	131	145	81	57.5	26	23	M8	543

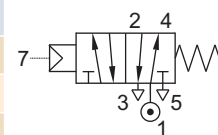
K (PORT SIZE)	A	B	C	D	E	F	G	H	J	CONST. REF.
VALVE TYPE : 53402-25										
1"	114	233	131	145	81	57.5	26	23	M8	544

5/2 AIR OPERATED, SPRING RETURN, SUBBASE MOUNTED POPPET VALVE

TYPE	PRESSURE

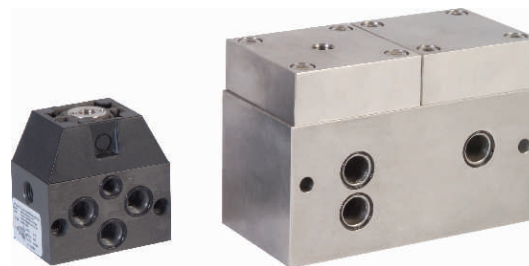
TYPE	PRESSURE

TYPE	PRESSURE
53400	0 - 20 bar
53402	0 - 40 bar



FEATURES

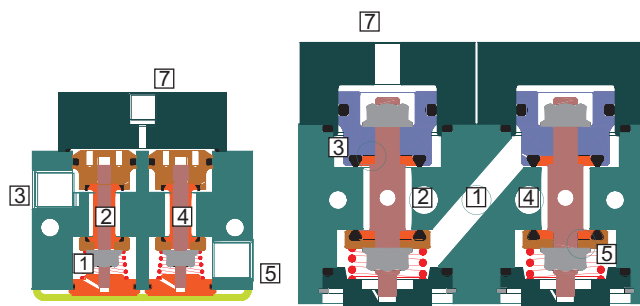
- Bubble tight shut off
- Mounts in any position
- Vibration resistance up to 9g
- Suitable for high speed cycling
- Speed up to 600 cycles/ min
- Life >10 million cycles
- O Rings and fasteners supplied loose with the Valve



WETTED PARTS

Code	※	B1	B2	B5
Body	Anodized Aluminium	Anodized Aluminium	Brass	SS 316
Internals	Aluminium, Brass and SS 316	SS 316	Brass and SS 316	SS 316
Spring	SS 302			
Fasteners	SS 304			
Seat, Seals	NBR, Viton			

※ Do not specify code if opted.



AMBIENT AND FLUID TEMPERATURE

-20 °C to 80 °C

SPECIAL VERSION AND SUFFIX

Suffix : (Valve) AM

MEDIA

Air, Inert Gases, Water, Free Flowing Liquid, Oil

APPLICATION

Operation of double acting cylinder/ actuator

PORT CONNECTION

INLET	OUTLET	OUTLET	EXHAUST	EXHAUST	PILOT INLET
1	2	4	3	5	6

Contact Rotex for

- Any other ambient, fluid temperature, media and application



The air pressure should be minimum 2 bar or \geq main fluid pressure whichever is higher.
Select Manifold MF003/ MF004/ MF010/ MF013

SPARES

(Refer page 25 for ordering code)

SPARE KIT	CODE
Seal Kit : Oring Set	98
Repair Kit : Oring Set, Fastener, Springs	99

5/2 AIR OPERATED, SPRING RETURN, SUBBASE MOUNTED POPPET VALVE

SPECIFICATION

SIZE	PORT CONNECTION		PRE-SSURE bar		ORIFICE (mm)	FLOW FACTOR kv (LPM OF WATER @ 1 bar ΔP)	VALVE TYPE	PILOT PRESSURE	BODY MATERIAL AND INTERNALS				SEALS					MANUAL OVERRIDE		SOLENOID ENCLOSURE		SUFFIX		POWER VA		CONSTRUCTION REFERENCE NUMBER
	BSP(F)	NPT(F)	MINIMUM	MAXIMUM					ALUMINIUM	ALUMINIUM + SS	BRASS	SS 316/CF8M	NBR	Viton	EPDM	HYTREL	PTFE	NIL	STAYPUT CUM MOMENTARY	MOMENTARY	WEATHER PROOF	EXPLOSION PROOF	OXYGEN	AMONIA	AC INRUSH	

5/2 AIR OPERATED

SB	0	20	6	12	53400	2-20	*	B2	B5	*	S2														734
	0	40	10	38	53402	2-40	*	B2	B5	*	S2														735
	0	40	16	75	53402	2-40	*	B2	B5	*	S2														736
	0	40	25	185	53402	2-40	*		B5	*	S2														737

* = Do not specify when opted for
 ✓ = Options available

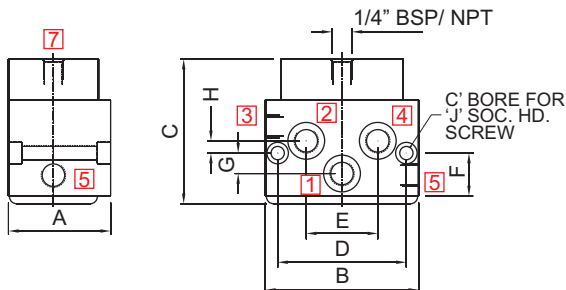
* Valve type printed in red colour is external pilot air/ air operated valve

ORDERING CODE AND EXAMPLE

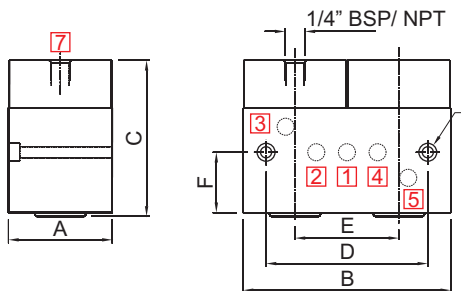
TYPE - SUFFIX - ORIFICE - PORT CONNECTION - BODY AND INTERNALS - SEAL
 e.g. 53400-6-SB-B2

DIMENSIONS

All Dimensions are in mm



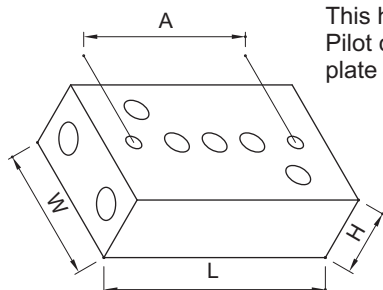
K (PORT SIZE)	A	B	C	D	E	F	G	H	J	CONST. REF.
VALVE TYPE : 53400										
SUBBASE	50	75	71	63	34	21	10	6	M6	734



NW	K (PORT SIZE)	A	B	C	D	E	F	J	CONST. REF.
VALVE TYPE : 53404									
10	SUBBASE	61	122	92	95	61	35.5	M8	735
16	SUBBASE	81	165	114	145	81	47.5	M8	736
25	SUBBASE	81	165	131	145	81	57.5	M8	737

ADOPTER PLATE

Adopter plate is used for mounting 1 No. 51404 valve.
 This has individual inlet, outlet and exhaust ports.
 Pilot connection can be provided on the adopter plate



ADOPTER MODEL	K (PORT SIZE)	L	W	H	A	B
AP4A	1/4"	80	80	32	50	70
AP4B	3/8"	90	114	40	60	102
AP4C	1/2"	110	160	50	80	148
AP4D	3/8"	90	114	40	60	102
AP4E	3/4"	110	160	50	80	148