



# SP SERIES

## SINGLE STAGE VACUUM PUMPS

Rugged, Single stage, oil sealed, rotary vane vacuum pumps of Global standard



[www.hhvpumps.com](http://www.hhvpumps.com)



### HHV PUMPS

Vacuum Technology Solutions and Services



## HHV PUMPS

Vacuum Technology Solutions and Services

SP series vacuum pumps are single stage, direct drive, oil sealed and air-cooled rotary vane vacuum pumps. It is better supported by bearings on either side. Pump has inbuilt gas ballast valve and reliable oil circuit.

### FEATURES

- Robust and compact
- High pumping speed even at low pressures
- Gas Ballast valve fitted as standard with easy access
- Exhaust mist filter with built-in bypass valve
- Quiet in operation
- Minimal vibration
- Integral anti-suck back valve
- Less oil consumption
- Air-cooled
- Easy to service

### INDUSTRY/MARKETS

- Coating & deposition
- Food processing
- Metallurgy/Furnace
- Power engineering
- Automotive
- Pharmaceutical
- Packaging
- Research & development
- Central vacuum systems
- Laminator

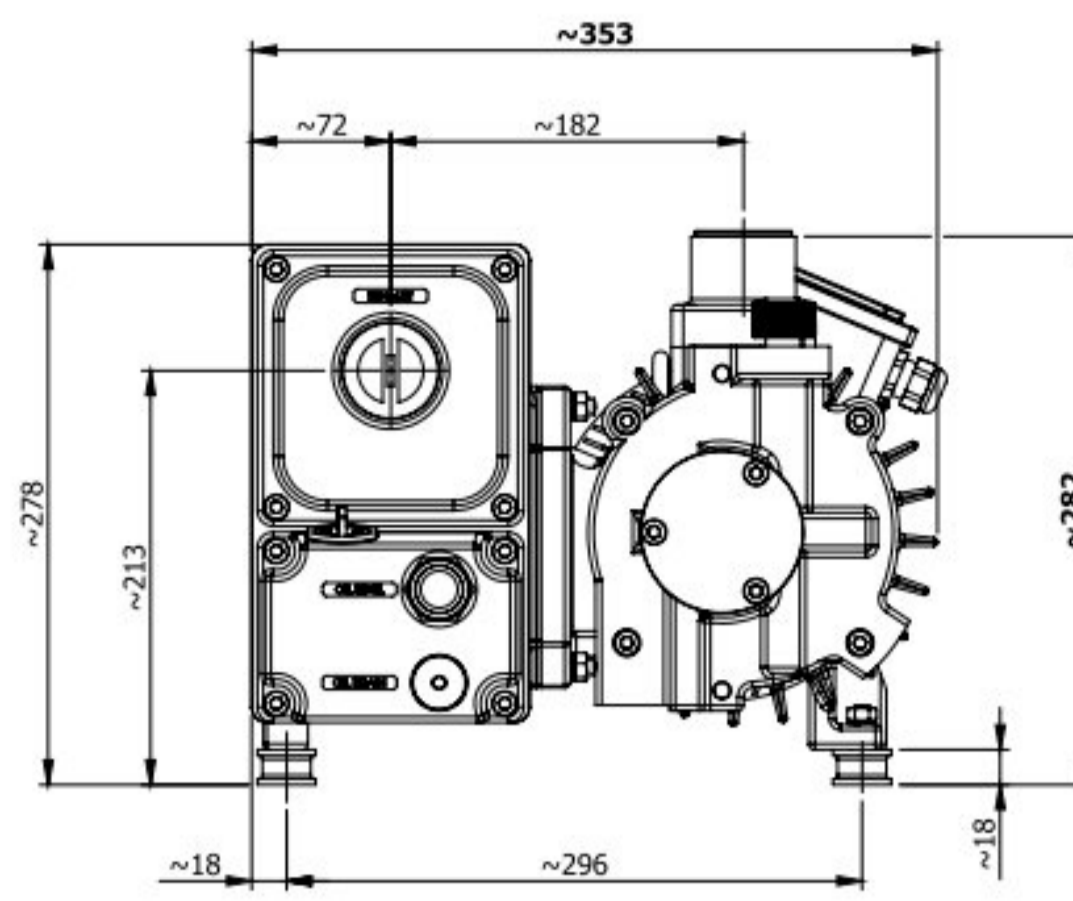
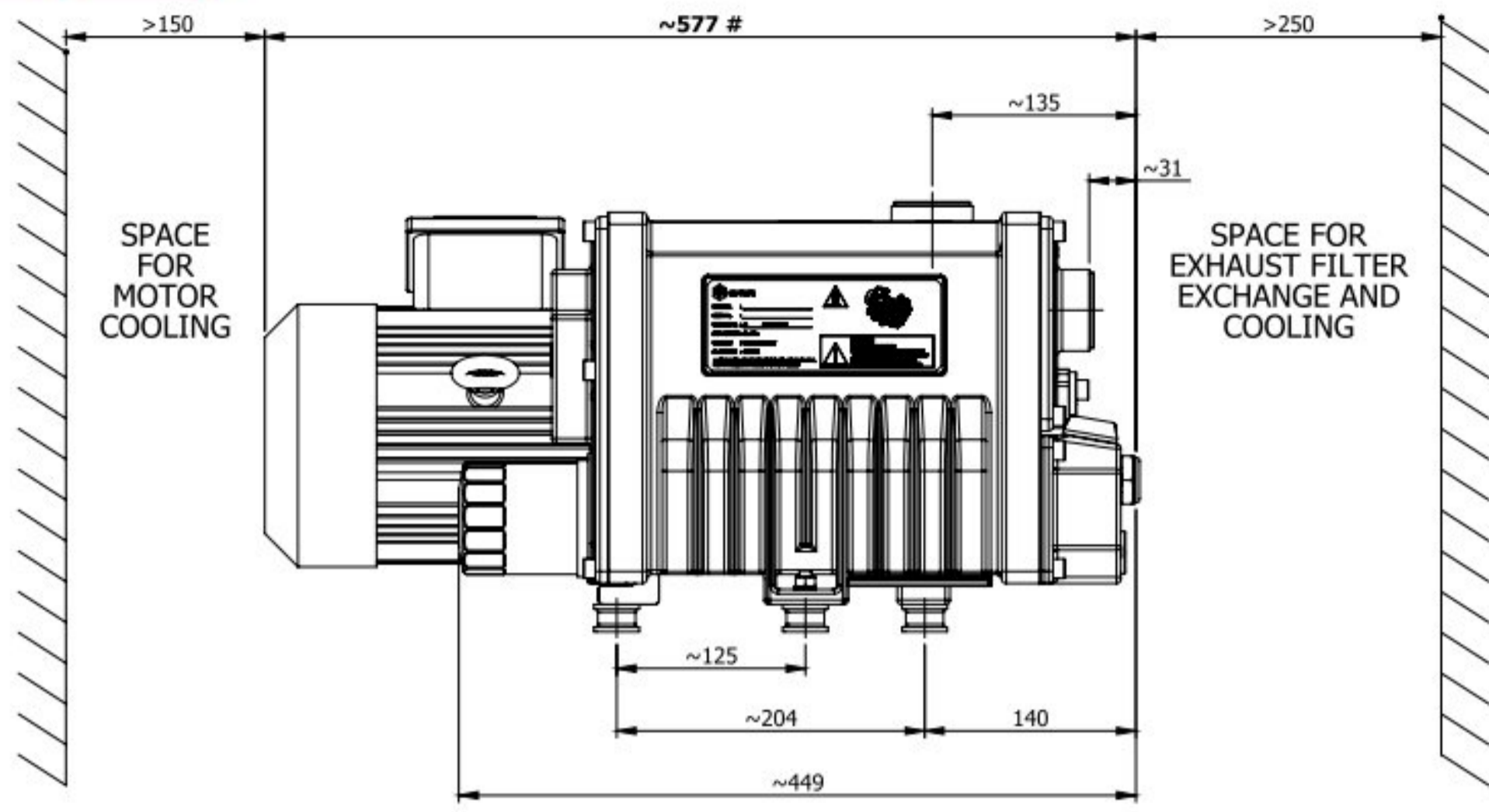
### TYPICAL APPLICATIONS

- Resin infusion (wind shield)
- Job holding (CNC), pick & place (gantry robot)
- Vacuum material conveying (powder transfer)
- Tray drying, roto-cone evaporator
- Agitated thin film dryer (ATFE)
- Transformer/capacitor vapour phase drying (electrical)
- Vacuum filtration (Chemical)
- Solar lamination
- Resin impregnation
- Capsule filling, blister packing (Pharmaceutical)
- Food packaging

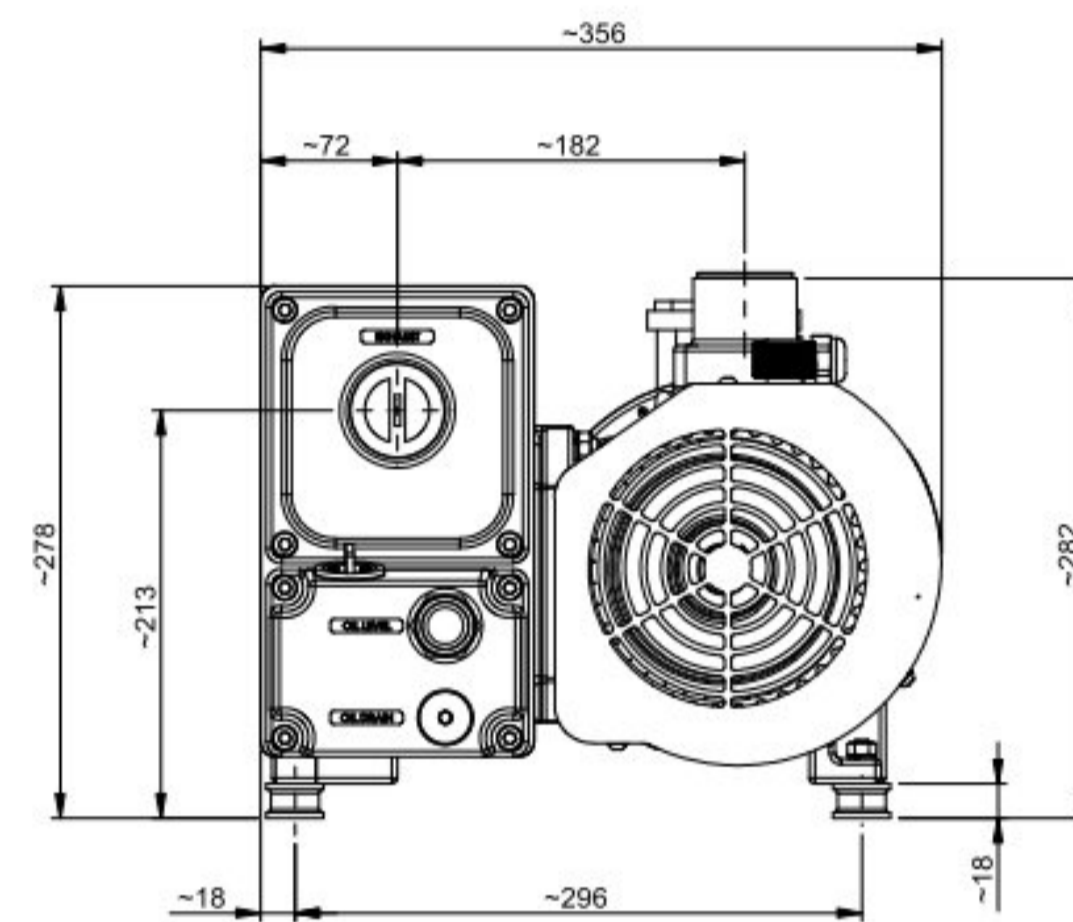
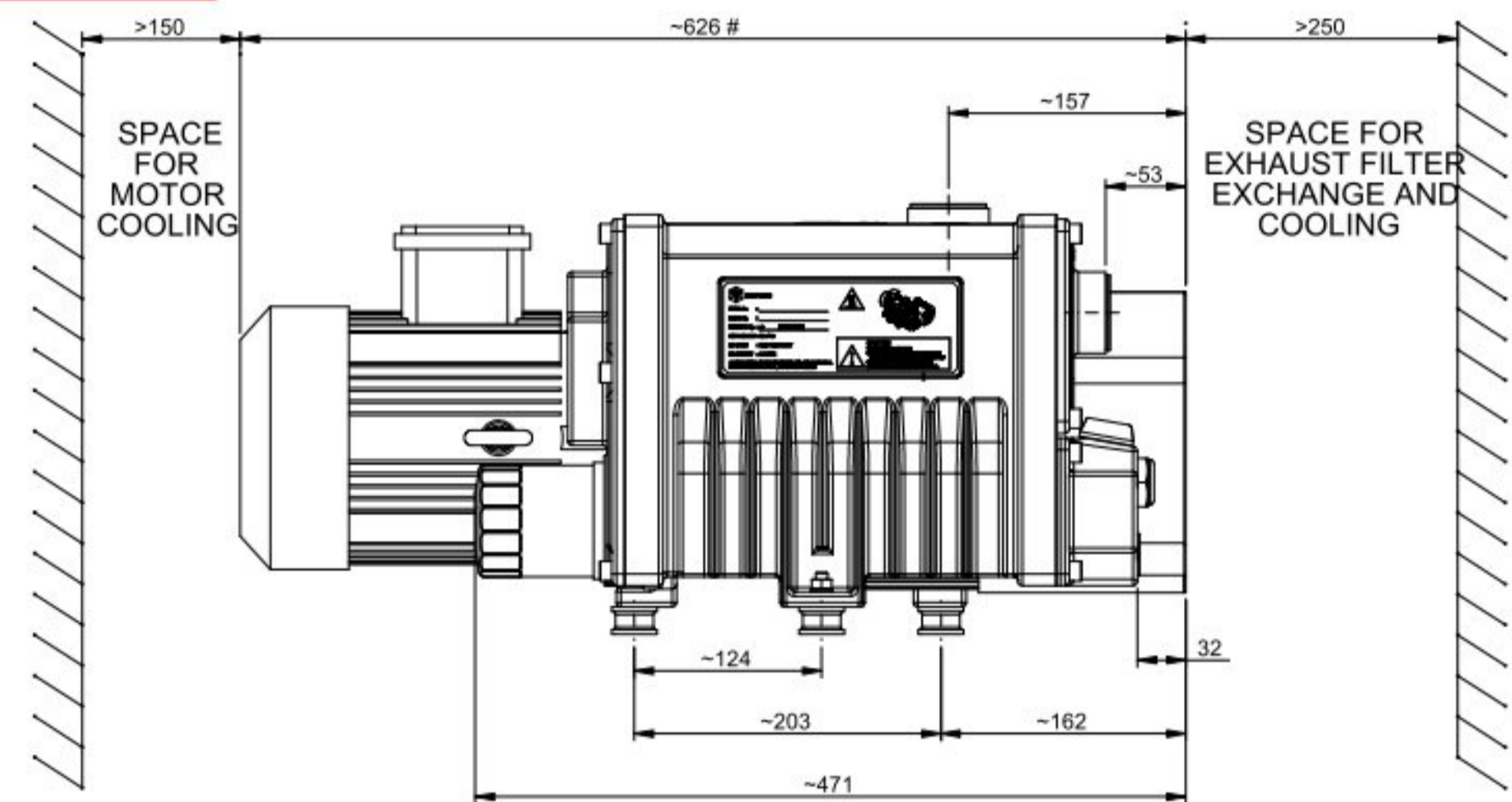


# DIMENSIONAL DETAILS

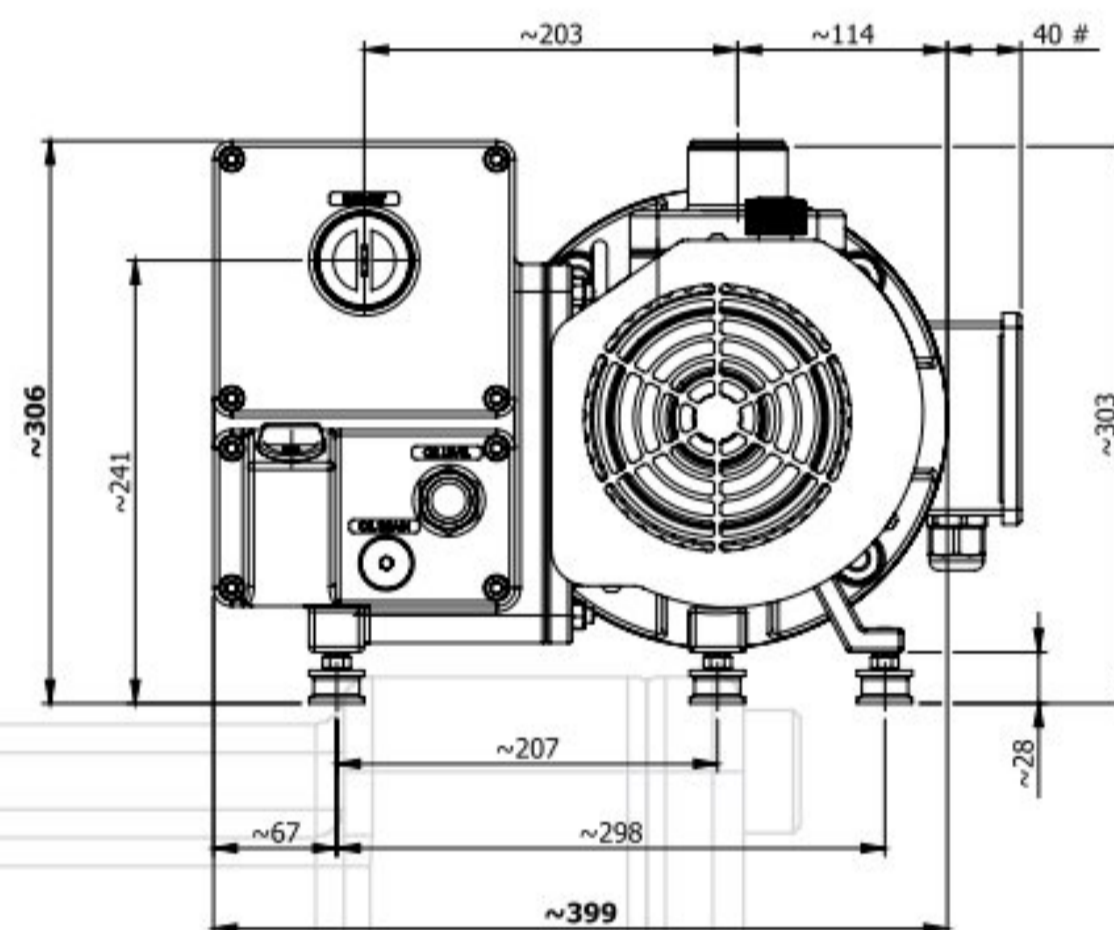
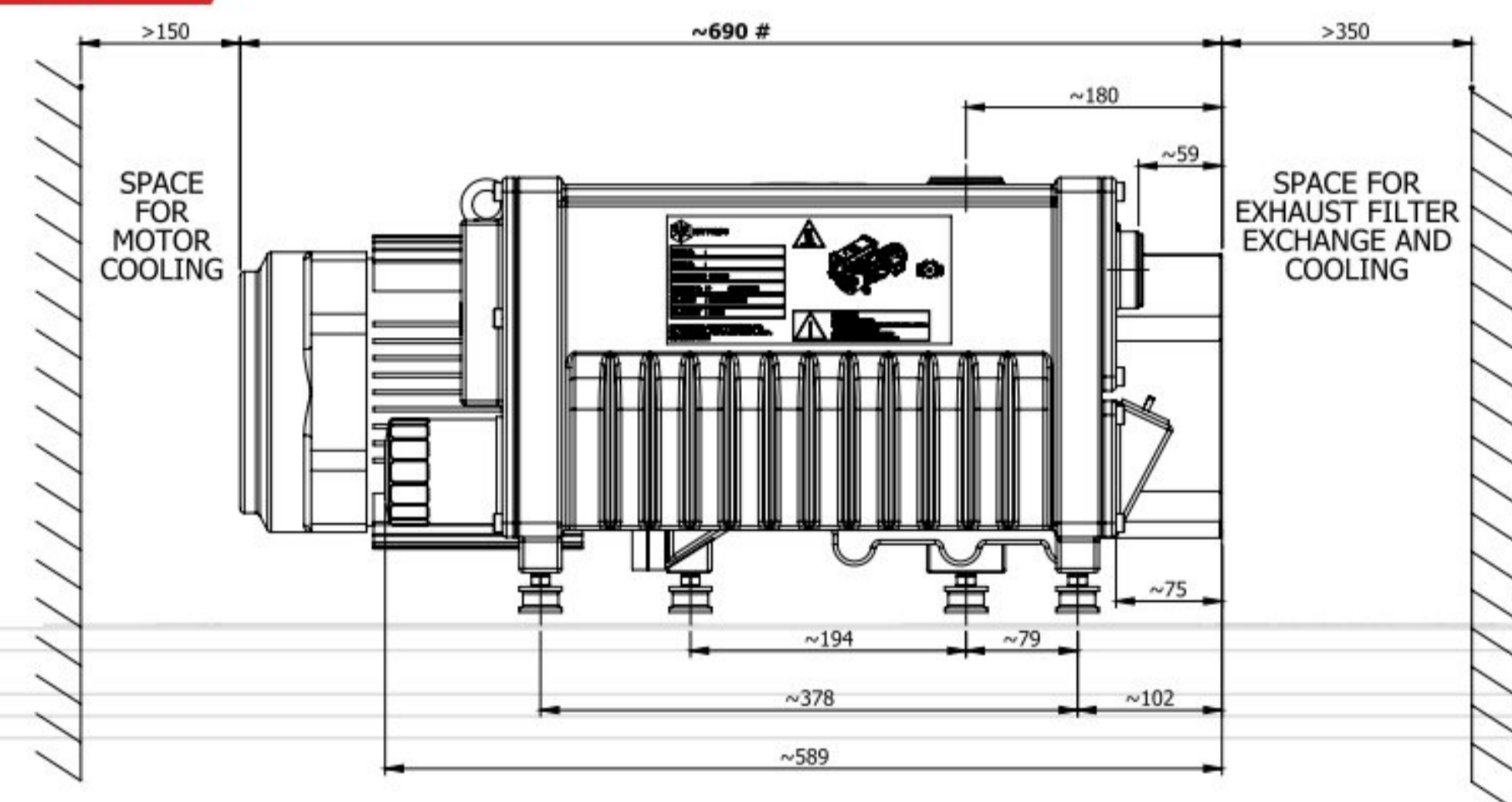
**SP40**



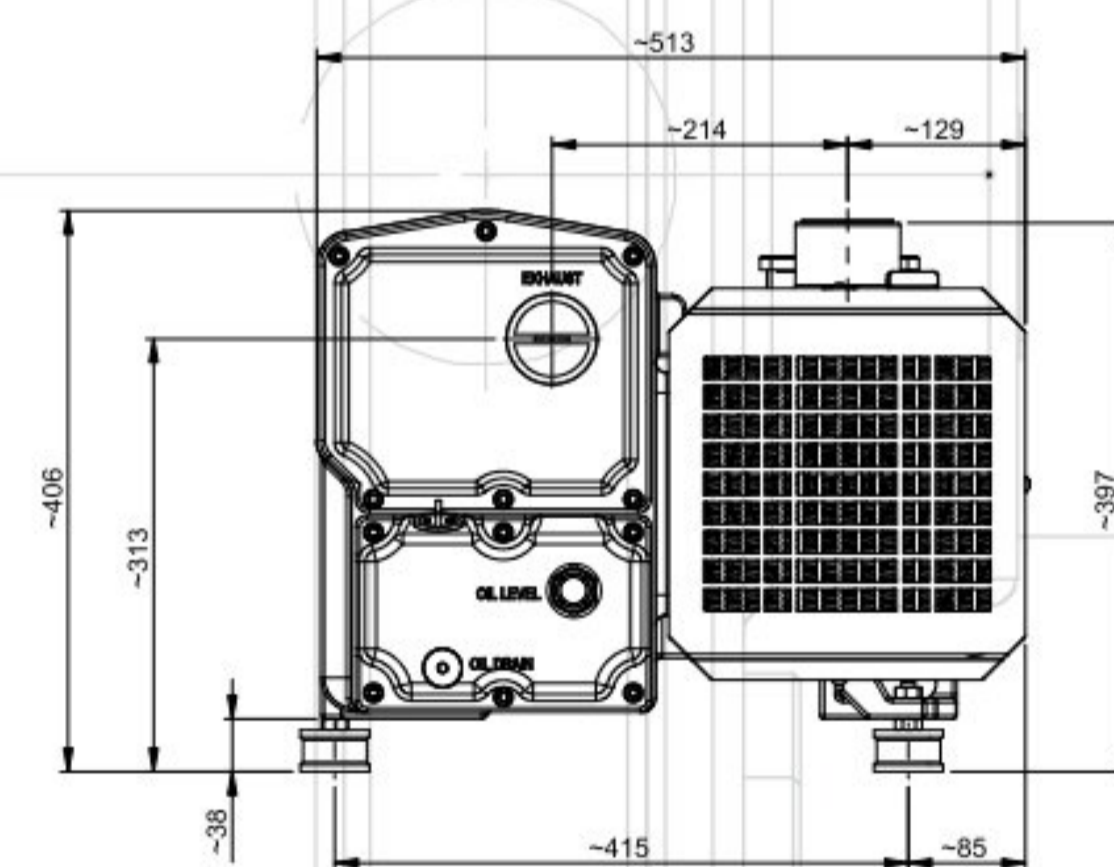
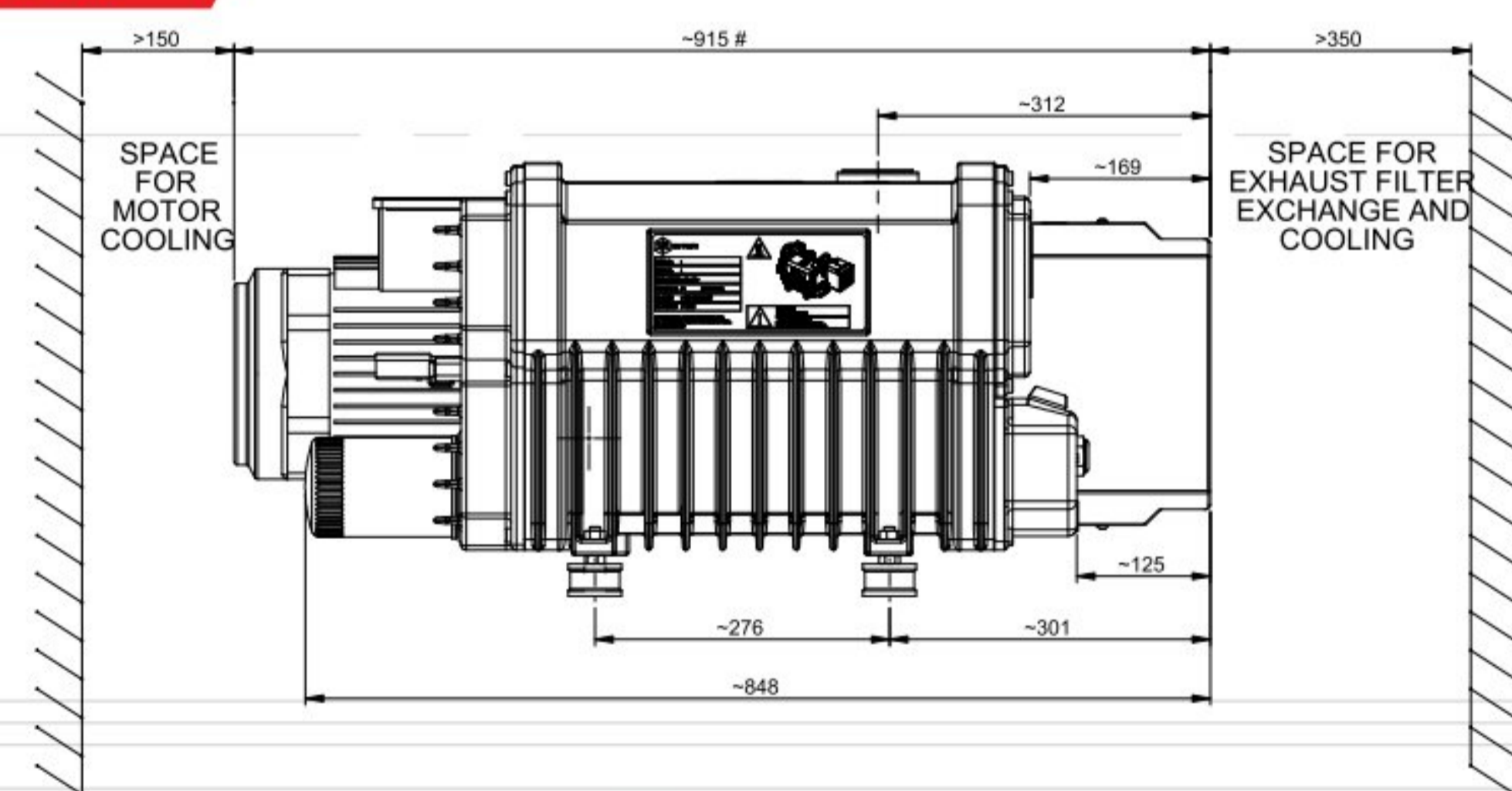
**SP65**



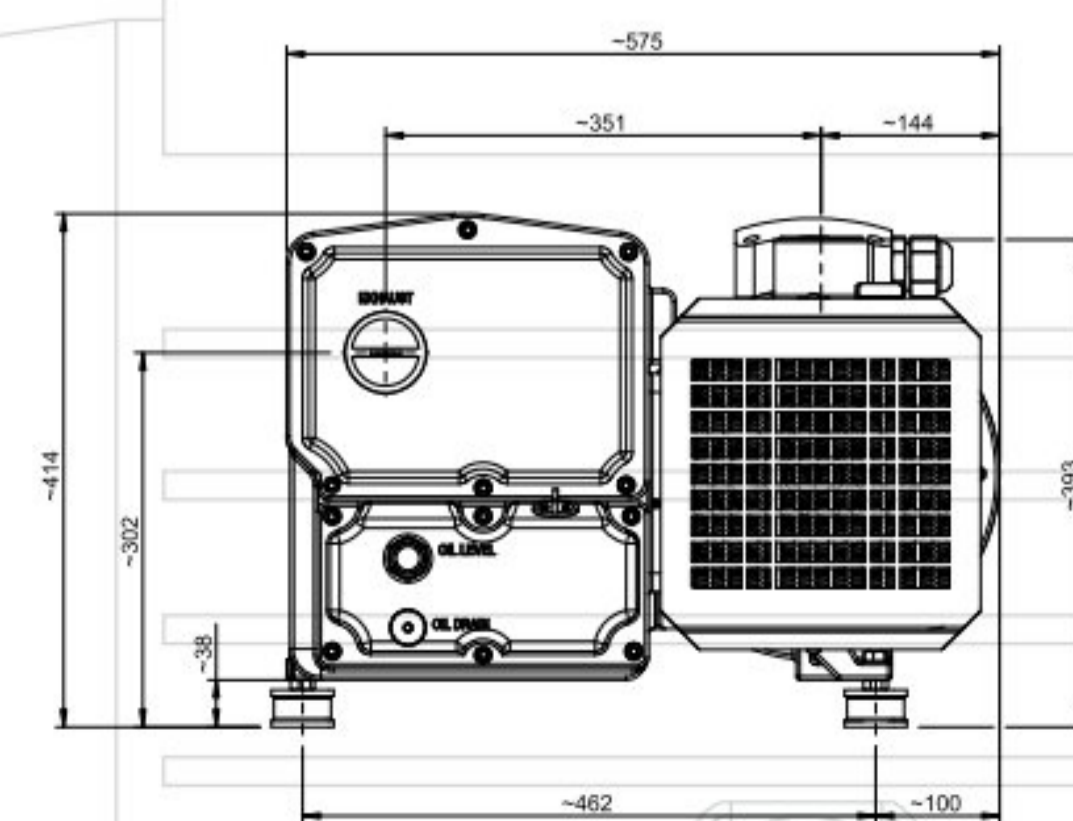
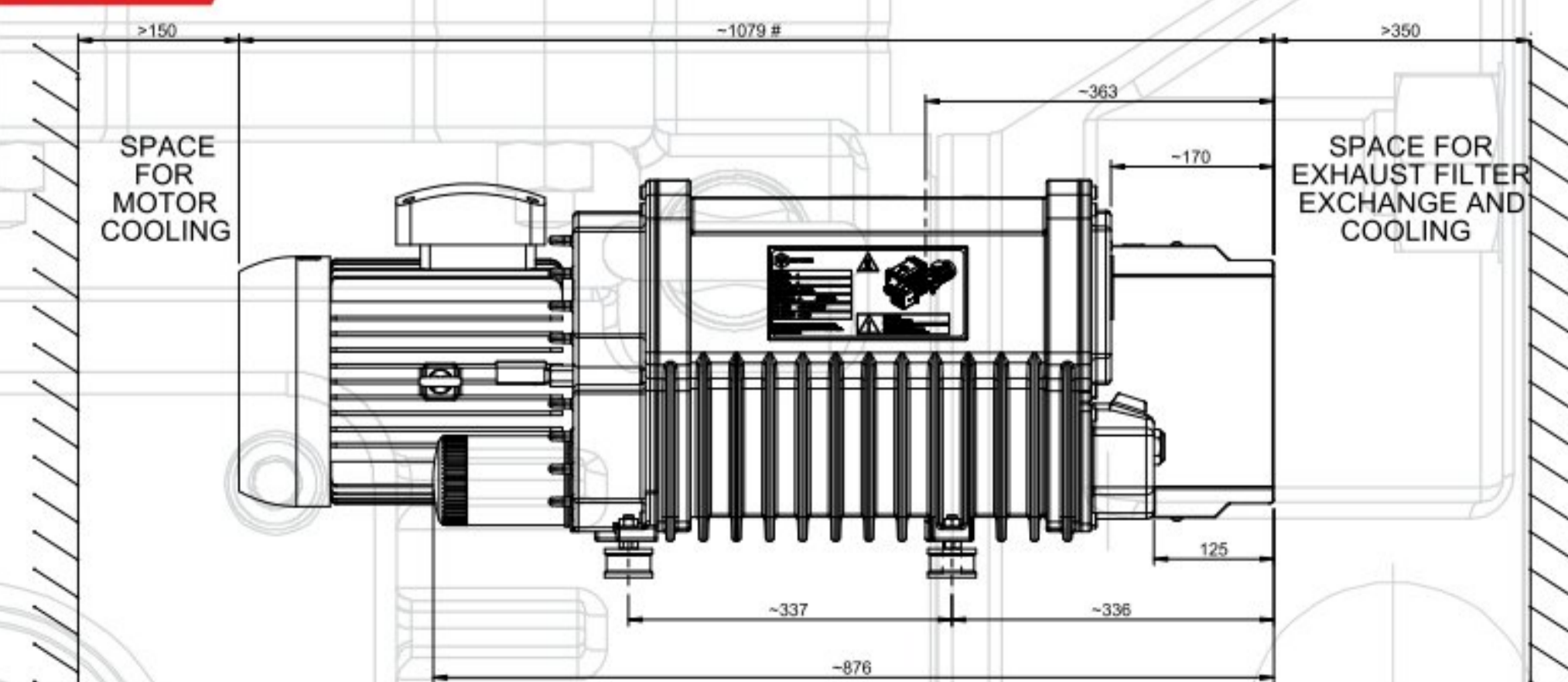
**SP100**



**SP200**



**SP300**

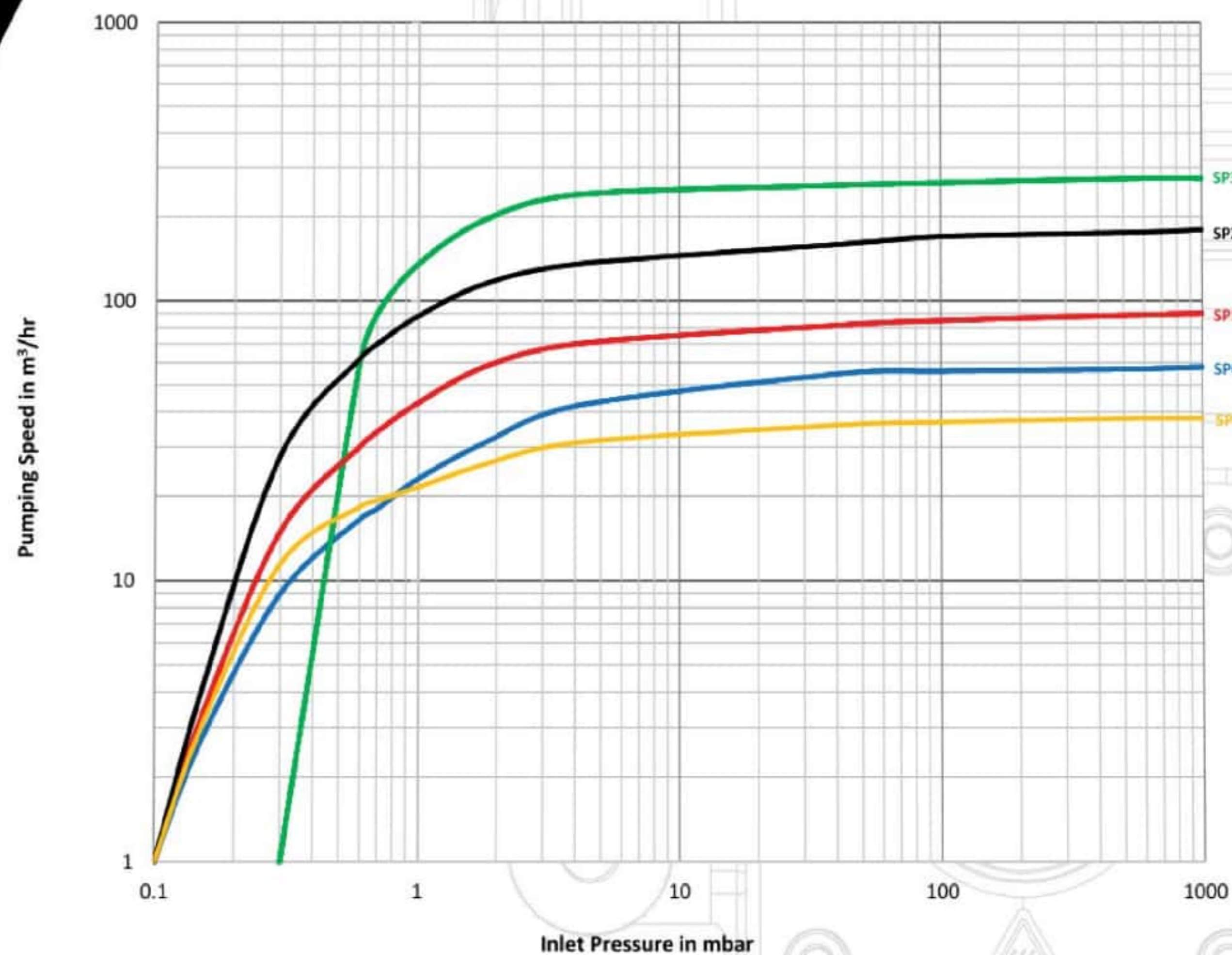


All dimensions indicated above are in mm

# TECHNICAL SPECIFICATIONS

Particulars	Unit	SP40	SP65	SP100	SP200	SP300
Nominal pumping speed @ 50Hz	m <sup>3</sup> /hr (L/min)	43 (717)	65 (1083)	102 (1700)	192 (3200)	300 (5001)
Ultimate vacuum (Total pressure)	Gas ballast closed in mbar (Torr)	≤ 0.1 (0.07)	≤ 0.1 (0.07)	≤ 0.1 (0.07)	≤ 0.1 (0.07)	≤ 0.3 (0.22)
	Gas ballast open in mbar (Torr)	≤ 1.5 (1.125)	≤ 1.5 (1.125)	≤ 1.5 (1.125)	NA	NA
	Small gas ballast in mbar (Torr)	NA	NA	NA	≤ 0.8 (0.6)	≤ 0.8 (0.6)
	Standard gas ballast in mbar (Torr)	NA	NA	NA	≤ 1.5 (1.125)	≤ 1.8 (1.35)
	Big gas ballast in mbar (Torr)	NA	NA	NA	≤ 2 (1.5)	≤ 2.5 (1.87)
Pump Rotational Speed at No-Load @ 50 Hz	rpm	1000	1500	1500	1500	1500
Max. Nominal Power Rating @ 50 Hz	kW (HP)	0.75 (1)	1.5 (2)	2.2 (3)	3.7 (5)	5.5 (7.5)
Weight	kg (lb)	53	59	90	139	193
Inlet connection		G 1 1/4" F	G 1 1/4" F	G 1 1/4" F	G 2" F	G 2" F
Outlet connection		G 1 1/4" F	G 1 1/4" F	G 1 1/4" F	G 2" F	G 2" F
Oil capacity	Lts	1.8	1.8	2	7	9
Recommended oil	Standard	IG68	IG68	IG68	IG68	IG68
Power supply		3P 380-440V (50Hz)	3P 380-440V (50Hz)	3P 380-440V (50Hz)	3P 380-440V (50Hz)	3P 380-440V (50Hz)

# PERFORMANCE CURVES



The displacement curves are valid for air at 20°C. Tolerance ± 10%

# LOCATIONS