



30 years  
of Service



12,000  
Customers



■ Product Guide



**ACCUREX**



## Corporate Profile

Established in 1984, Accurex Biomedical Pvt. Ltd is a leading manufacturer of *in vitro* diagnostic products with over 30 years of expertise in this field. We are on a mission to provide innovative and trustworthy medical diagnostic solutions for "testing life & saving lives".

Consistently guided by a clear vision to be amongst the TOP 3 Indian companies in the medical diagnostics industry, we have built a reputation of quality products, a strong financial base and dynamic marketing.

Today, more than 12,000 laboratories in India, the Asia Pacific region, West Africa & UK patronize our products.

Our Headquarter and Marketing Office is located at Mumbai, the commercial capital of India. Branch offices in metros like New Delhi & Kolkata ensure a rapid customer response time and optimal market reach.

Our diverse product portfolio comprises of laboratory automation solutions like Fully-Automated and Semi-Automated Clinical Chemistry Analyzers, Haematology Analyzers, Electrolyte Analyzers and Urine Analyzers along with Clinical Chemistry reagents, Urinalysis Test Strips, Serology Range, Point-of-Care devices which include Diabetes Monitoring Systems & Hemoglobinometer, Rapid Card devices, Controls, Calibrators and Liquid Handling Products.

Our manufacturing facility is ISO 13485 : 2003 & ISO 9001 : 2008 certified and our products are CE certified reiterating our commitment to quality.

With excellent quality products, pan India sales and service team of over 100 people, extensive distribution channel of more than 25 super-stockiest & over 400 distributors and an expertise of 30 years in providing total laboratory solutions, we are fast advancing towards our vision and are driven by innovation.

We continue to evolve, in the Indian sub-continent and across the world, with assurance of Quality & Accuracy.



## $\alpha$ - AMYLASE — GAL-G<sub>2</sub>- $\alpha$ -CNP

- Use of Gal-G<sub>2</sub>- $\alpha$ -CNP substrate
- Single ready-to-use liquid reagent
- Linearity : 2000 IU/L
- Test time : 2 ½ minutes
- Pack - Sizes : 6 x 2 ml  
12 x 5 ml



## BUN — GLDH - KINETIC

- Ready-to-use, 2 liquid reagent system
- Need based reconstitution possible
- Direct estimation of urea possible
- High liquid stability
- High linearity
- Pack - Sizes : 100 ml (2 x 40 ml, 2 x 10 ml)  
250 ml (4 x 50 ml, 2 x 25 ml)  
500 ml (4 x 100 ml, 2 x 50 ml)

## BUN — GLDH - KINETIC

- High specificity : Enzymatic UV - Kinetic
- Direct estimation of urea upto 535 mg/dL
- High liquid stability : 45 days
- Pack - Sizes : 4 x 50 ml  
20 x 50 ml



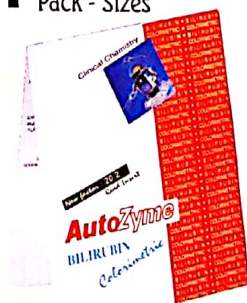
## ALKALINE PHOSPHATASE — p - NPP - DEA BUFFER

- Kinetic reaction with 60 seconds lag phase
- Easy reconstitution : Tablet + Diluent
- High liquid stability : 21 days
- Pack - Sizes : 12 x 5 ml  
30 x 10 ml



## BILIRUBIN — JENDRASSIK & GROF

- Ready-to-use liquid stable reagents
- Simple test procedure : 1.0 ml + 0.02 ml + 0.05 ml
- Results via factor : 20.2 at 530 nm. - 550 nm.
- Pack - Sizes : Bilirubin Total & Direct (T & D) 2 x 100 ml  
Bilirubin Total 1 x 1000 ml  
Bilirubin Direct 1 x 1000 ml



## ACID PHOSPHATASE — $\alpha$ - NAPHTHYLPHOSPHATE

- High stability : 7 days
- Assay time : 8 minutes at 37°C
- Linearity
- Pack - Size



## BILIRUBIN - CAFFEINE

- Ready-to-use liquid stable reagents
- Linearity : 20 mg%
- Pack - Size : Bilirubin Total & Direct (T & D) 2 x 90 ml



## ALBUMIN — BCG

- Ready-to-use single liquid reagent
- Fast 1 minute incubation at R.T.
- Pack - Sizes : 2 x 50 ml  
3 x 100 ml  
1 x 1000 ml





## CHOLESTEROL — CHOD - POD

- Ready-to-use reagent
- Results via factor possible
- Effective Lipid Clearing Agent
- High linearity : 1000 mg%
- Pack - Sizes : 2 x 25 ml  
5 x 25 ml  
5 x 50 ml  
6 x 100 ml

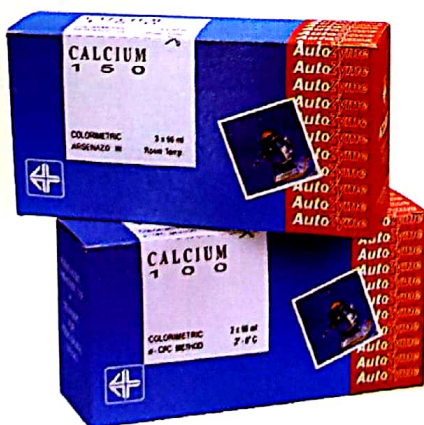


## CHOLESTEROL — CHOD - POD

- Excellent liquid stability : 12 months
- Rock-steady reagent blank
- Results via factor possible
- Effective Lipid Clearing Agent
- Linear upto 1000 mg%
- Pack - Sizes : 2 x 30 ml  
20 x 50 ml

## CALCIUM — o - CPC

- Need based, single step reconstitution
- No interference from Mg and Fe
- Pack - Sizes : 2 x 50 ml  
2 x 100 ml



## CALCIUM — ARSENAZO III

- Single ready-to-use liquid reagent
- Kit storage at R.T.
- End-Point assay : 2 minutes
- Pack - Size : 3 x 50 ml

## CHLORIDE — MERCURIC THIOCYANATE

- Single ready-to-use liquid reagent
- Fast 1 minute incubation at R.T.
- Pack - Size : 2 x 50 ml

## CK-MB / CK-NAC — UV - KINETIC

- Ready-to-use, 2 liquid reagent system
- Need based reconstitution possible
- Freedom from worry of reagent expiry
- High linearity
- High stability
- Technical inserts include MI chart to ensure correct diagnostic interpretation of results
- Pack - Size : 10 ml (1 x 8 ml, 1 x 2 ml)

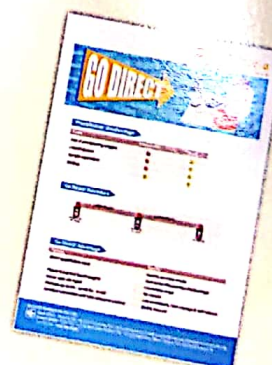
## CREATININE — JAFFE - KINETIC

- Need based, single step reconstitution
- Working reagent stability : 30 days
- Kit storage at R.T.
- Pack - Sizes : 2 x 100 ml  
2 x 500 ml



## DIRECT HDL-C — DIRECT HOMOGENOUS

- Direct Quantitative Assay to overcome precipitation disadvantage
- Excellent correlation with CDC reference method
- Linearity : 185 mg/dL
- Pack - Size : 80 ml (1 x 60 ml, 1 x 20 ml)



## DIRECT LDL-C — DIRECT HOMOGENOUS

- Direct Quantitative Assay to overcome Friedewald disadvantage
- Linearity : 250 mg/dL
- Pack - Size : 40 ml (1 x 30 ml, 1 x 10 ml)



## GLUCOSE 'STAT' — GOD - POD

- Ready-to-use reagent
- 2 standards provided : 100 mg% & 300 mg%
- Both End-Point and Kinetic method possible
- End-Point : 7 minutes
- Linearity : 500 mg%
- Kinetic : 1 minute
- Linearity : 700 mg%
- Results via factor possible
- Pack - Sizes : 6 x 100 ml  
3 x 500 ml  
2 x 1010 ml



## GLUCOSE 'STAT' — GOD - POD

- Long liquid stability : 12 months
- Both End-Point and Kinetic method possible
- End-Point : 7 minutes; Linearity : 500 mg%
- Kinetic : 1 minute; Linearity : 700 mg%
- Rock-steady reagent blank
- Results via factor possible
- 2 standards provided : 100 mg% & 300 mg%
- Pack - Sizes : 10 x 100 ml  
4 x 500 ml



## GOT (AST) / GPT (ALT) — IFCC

- Ready-to-use, 2 liquid reagent system
- High stability
- Need based reconstitution possible
- Freedom from worry of reagent expiry
- High liquid stability
- High linearity
- Pack - Sizes : 50 ml (1 x 40 ml, 1 x 10 ml)  
100 ml (2 x 40 ml, 2 x 10 ml)  
250 ml (4 x 50 ml, 2 x 25 ml)



## GOT (AST) / GPT (ALT) — IFCC

- Mono-reagent on reconstitution
- Liquid stability : 60 days
- Pack - Sizes GOT : 3 x 10 ml  
4 x 50 ml  
20 x 50 ml
- Pack - Sizes GPT : 2 x 30 ml  
4 x 50 ml  
20 x 50 ml



## GAMMA-GT — IFCC

- Two liquid reagent system
- Need based reconstitution possible
- High linearity : 1000 IU/L
- Pack - Sizes : 10 ml (1 x 8 ml, 1 x 2 ml)  
50 ml (1 x 40 ml, 1 x 10 ml)



## G6PDH — QUALITATIVE DYE

- Qualitative method for screening of G6PDH deficiency
- Additional reagent for running control provided
- Pack - Size : 12 tests

## G6PDH — QUANTITATIVE KINETIC

- Quantitative method for estimation of G6PDH
- Pack - Size : 12 x 1 ml





### HDL-CHOLESTEROL — PHOSPHOTUNGSTATE / $MgCl_2$

- Recommended reagent / sample ratio of 100  $\mu$ l : 100  $\mu$ l (1:1)
- Standard : 50 mg%
- Used in conjunction with AutoZyme / Infinite Cholesterol reagent kit
- Pack - Size : 2 x 50 ml



### LDH — PYRUVATE → LACTATE

- Ready-to-use, 2 liquid reagent system
- Need based reconstitution possible
- Long liquid stability : 15 months
- High linearity : 2000 IU/L
- Pack - Sizes : 10 ml (1 x 8 ml, 1 x 2 ml)  
30 ml (1 x 24 ml, 1 x 6 ml)



### LIPASE — COLORIMETRIC KINETIC

- Ready-to-use, two liquid reagent system
- Kinetic procedure of just 9 minutes
- High linearity of 300 IU/L
- Calibrator provided with the kit
- Pack - Size : 25 ml (2 x 10 ml, 2 x 2.5 ml)



### MAGNESIUM — XYLIDYL BLUE

- Ready-to-use reagent
- Fast reaction time : 5 minutes
- Linearity : 5 mg/dL
- Pack - Size : 2 x 25 ml



### PHOSPHORUS — PHOSPHOMOLYBDATE

- Single ready-to-use liquid reagent
- UV - End-Point reaction at 340 nm.
- Pack - Size : 2 x 50 ml

### TRIGLYCERIDES — GPO - POD

- Ready-to-use reagent
- 2 standards provided : 200 mg% & 600 mg% in large packs
- Results via factor possible
- Effective Lipid Clearing Agent
- High linearity : 800 mg%
- Pack - Sizes : 2 x 25 ml  
5 x 25 ml  
5 x 50 ml  
6 x 100 ml



### TRIGLYCERIDES — GPO - POD

- Long liquid stability : 12 months
- Rock-steady reagent blank
- Results via factor possible
- Effective Lipid Clearing Agent
- Linear upto 800 mg%
- Pack - Sizes : 3 x 10 ml  
10 x 50 ml

### TOTAL PROTEIN — BIURET

- Single ready-to-use liquid reagent
- Fast 5 minutes incubation at 37°C
- Pack - Sizes : 2 x 50 ml  
3 x 100 ml  
1 x 1000 ml

### TURBILATEX ASO / CRP / RF - IMMUNOTURBIDIMETRY

- Latex enhanced immunoturbidimetry improves sensitivity
- High prozone limit
- Adapted for auto analyzers
- Calibrator included in the kit
- Controls available separately
- Pack - Size : 50 ml (1 x 45 ml, 1 x 5 ml)

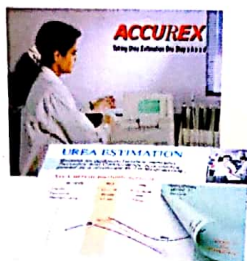




## RAPIDS-AccuTest

### UREA — MODIFIED BERTHELOT

- Convenient two reagent system
- Fast 3 + 5 minutes incubation at 37°C
- Liquid stability : 6 months
- Negligible interference from Haemoglobin and Bilirubin
- Pack - Sizes : 2 x 50 det. (200 ml)  
2 x 100 det. (400 ml)  
5 x 100 det. (1000 ml)  
10 x 100 det. (2000 ml)



### MALARIA Pf/Pv Ag — CHROMATOGRAPHIC IMMUNOASSAY

- Rapid qualitative determination of Malaria Antigen
- Pack - Size : 50 tests

### SYPHILIS — CHROMATOGRAPHIC IMMUNOASSAY

- Rapid qualitative determination of Treponemal antibodies
- Pack - Size : 25 tests

### HBsAg — CHROMATOGRAPHIC IMMUNOASSAY

- Rapid qualitative determination of Hepatitis B Surface antigen
- Pack - Size : 50 tests

### DENGUE COMBO (NS1 Ag - IgG/IgM) — CHROMATOGRAPHIC IMMUNOASSAY

- Rapid qualitative determination of Dengue NS1 Antigen differential IgG/IgM antibodies
- Pack - Size : 10 tests



### URIC ACID — URICASE

- Ready-to-use reagent
- Results via factor possible
- High linearity : 25 mg%
- Pack - Sizes : 2 x 25 ml  
5 x 25 ml  
5 x 50 ml  
6 x 100 ml



### URIC ACID — URICASE

- Long liquid stability : 12 months
- Results via factor possible
- Interference of Bilirubin is reduced by the addition of Ferrocyanide
- Interference of Ascorbic acid is overcome by the addition of Ascorbic acid base
- Pack - Sizes : 18 x 25 ml

### WASH REAGENT

- A 'Novel' cleaning solution for semi & fully automated analyzers
- Ready-to-use reagent, Stable till expiry
- Storage at R.T.
- 'Novel' formulation solubilizes proteins & phospholipids
- Flow cell & probe washed free from coagulation protein interferents
- No sample & reagent carryover
- Pack - Size : 4 x 50 ml

## URINALYSIS PRODUCTS

### KETO-TEST GK

- Test Strip for Glucose & Ketone
- Pack - Size : 50's

### TRI-STIX pH

- Test Strip for Glucose, Protein & pH
- Pack - Size : 100's

### ACCU-DEX

- Test Strip for Glucose
- Pack - Size : 100's

### ACCU-STIX

- Test Strip for Glucose & Protein
- Pack - Size : 150's



### ASO/ RF/ CRP

- Latex agglutination slide test
- Qualitative and Semi-Quantitative testing possible
- Rapid results in just 2 minutes
- Pack - Size : 25 Tests

### RPR

- Carbon flocculation slide test
- Qualitative and Semi-Quantitative testing possible
- Rapid result in 6 minutes
- Pack - Size : 50 Tests

### WIDAL

- Qualitative and Quantitative Slide test
- Detection of 'O', 'H', A(H) & B(H)
- Rapid result in 1 minute
- User-friendly color-coded packaging
- Pack - Size : 4 x 5 ml - for detection of 'O', 'H', A(H) & B(H)  
(2+2) x 5 ml - for detection of 'O' & 'H'



## BIOCHEMISTRY CONTROLS

### ACCUTROL BIOCHEMISTRY CONTROL

- Contains both Normal & Abnormal levels of controls
- Control values for 28 biochemistry parameters
- Pack - Size : 2 x 5 ml



## LIQUID HANDLING SYSTEMS

### EASY-PETTE

- Fixed & variable pipettes
- Comfortable finger rest
- Low thermal conductivity
- Minimal cleaning
- Corrosion resistant material



## POINT-OF-CARE PRODUCTS

### BLOOD GLUCOSE METER

#### CLEVER CHEK TD-4230

- Result indicator
- Ketone warning
- 4 alarm settings
- Internal code setting
- Alternative site testing (AST)
- Strip-ejection function
- 0.7 µl blood volume
- 7 seconds reaction time
- 20 - 600 mg/dL measurement range
- 7, 14, 21, 28, 60 & 90 days average function
- 450 test memory with date & time
- PC download capability



### HEMOGLOBINOMETER

#### URIT-12 HEMOGLOBIN METER

- Fast haemoglobin and HCT test within 10 seconds
- Easy 3-step operation
- Principle : Optical reflectance
- Sample : Capillary or whole blood
- Measuring range : 4.0 - 24 g/dL
- Memory : 250 tests
- Quality control : HQ-A hemoglobin control solution

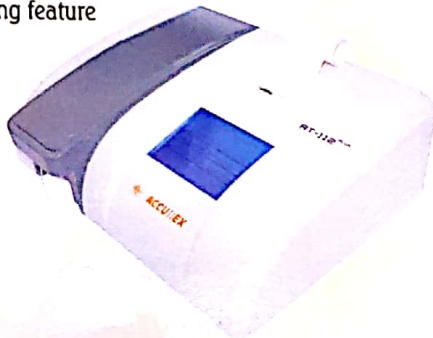




## CLINICAL CHEMISTRY ANALYZER

### AT-112 PLUS SEMI-AUTOMATED CLINICAL CHEMISTRY ANALYZER

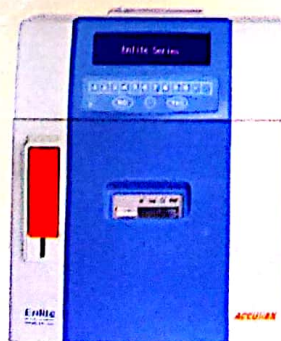
- Improved ergonomic touch screen display
- End-Point, Kinetic, Fixed time & Absorbance mode
- Single & bichromatic measurement
- Unique Zero-Drift function to check stability of optical path
- Filter check & worklist functions available
- Memory : 2000 results
- 112 programmable channels
- Real-time reaction curve display
- 7 filters (340 - 630 nm) & 1 free position
- Comprehensive QC program with L-J graph
- Lamp saving feature



## ELECTROLYTE ANALYZER

### ENLITE AUTOMATED ELECTROLYTE ANALYZER

- Compact, bench top analyzer
- Rapid test results in 30 seconds
- Memory : 1000 records
- Low sample consumption
- Special refillable electrodes. Easy to install, refill & maintain
- TCa, iCa, nCa results
- Automatic 1 point & 2 point calibration with optional manual calibration
- Advance "2-way washing flow system" for efficient cleaning
- Automatic calculation of "temperature compensation factor"
- Flagging of abnormal results
- Auto maintenance alarms for deproteinize & cleaning
- Customizable configurations



## HEMATOLOGY ANALYZER

### CBC-360 plus FULLY AUTOMATED HEMATOLOGY ANALYZER

- 3-part differentiation of WBC with histograms
- Estimation of 20 parameters
- Throughput : 60 samples/hour
- Memory : 100,000 samples (with histograms)
- Unique High Voltage Cautery function
- Direct command keys for Mode, Prime, Flush, Drain & Print
- Dual sample mode: Whole blood - 10  $\mu$ l ; Pre-diluent - 20  $\mu$ l
- Audio alarms for abnormal findings or system errors
- 4 QC methods - L-J, X-B, X-R & X



### CBC-330 FULLY AUTOMATED HEMATOLOGY ANALYZER

- Single Chamber Hematology Analyzer
- 3-part differentiation of WBC with histograms
- Estimation of 21 parameters
- Throughput : 60 samples/hour
- Memory : 100,000 samples (with histograms)
- Direct command keys for Mode, Prime, Flush, Drain & Print
- Dual sample mode: Whole blood - 10  $\mu$ l ; Pre-diluent - 20  $\mu$ l
- Audio alarms for abnormal findings or system errors
- 4 QC methods - L-J, X-B, X-R & X

## URINE ANALYZER

### XPRESS MINI UA – AUTOMATED URINE CHEMISTRY ANALYZER

- Non-touch operation
- Operator control – Touch Screen
- Sound alert on abnormal findings
- Comprehensive result display
- Point-of-Care testing
- Simultaneous measurement of 10 parameters



## INSTRUMENTS



### SPHERA — FULLY AUTOMATED RANDOM ACCESS ANALYZER



- Compact, fully automated, open random access analyzer
- Upto 200 tests/hour throughput (without ISE)
- Minimum reaction volume : 210  $\mu$ l
- Minimal < 1 L/h water consumption
- 80 reusable UV transmitting Bionex® plastic cuvettes ensure long life
- 8-step wash station
- Primary tubes and sample cups
- Round-the-clock on-board refrigeration for reagent
- 30 reagent and 60 sample positions
- Capacitive liquid level detector
- Needle shock detector
- Large liquid containers with level sensors

AutPure PRODUCTS



## **TLDL-C ADVANCED SURFACTANT TECHNOLOGY**

- Direct Quantitative Assay for LDL-C
- True measurement of LDL-C. Overcomes limitation of Friedewald Formula
- Ready-to-use, two liquid reagents, stable till expiry
- Certified by CDC, meets NCEP quality criteria
- Excellent correlation with Ultracentrifugation Method
- Negligible interferences in highly icteric, lipemic, immunoglobulinemic and haemolysed samples
- Linear upto 450 mg/dL
- Pack - Sizes : 320 ml (4 x 60 ml, 4 x 20 ml)



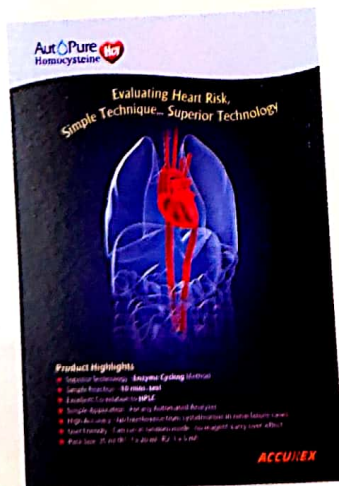
## **THDL-C ADVANCED SURFACTANT TECHNOLOGY**

- Direct Quantitative Assay for HDL-C
- Facilitates full automation, eliminates risk of human error
- Ready-to-use, two liquid reagents, stable till expiry
- Certified by CDC, meets NCEP quality criteria
- Excellent correlation with CDC Reference Method
- Negligible interferences in highly icteric, lipemic, immunoglobulinemic and haemolysed samples
- Linear upto 150 mg/dL
- Pack - Sizes : 320 ml (4 x 60 ml, 4 x 20 ml)



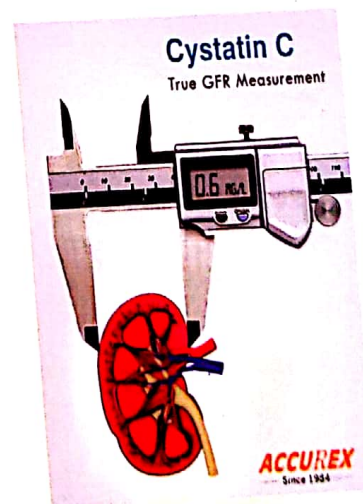
## **HOMOCYSTEINE : ENZYME CYCLING METHOD**

- Excellent correlation with HPLC
- No interference from Cystathionine
- Simple 10 minute reaction
- Linearity : 50 mmol/L
- Pack - Size : 25 ml (1 x 20 ml, 1 x 5 ml)



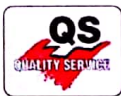
## **CYSTATIN-C : IMMUNOTURBIDIMETRY**

- Particle enhanced immunoturbidimetry Assay of just 10 mins
- Superior marker to creatinine
- Cystatin C to GFR converter provided in the pack-insert
- Linearity : 6.5 mg/L
- Pack - Size : 30 ml (1 x 25 ml, 1 x 5 ml)



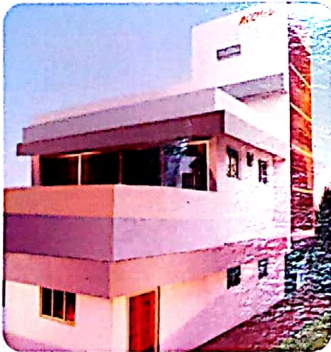
## **ADA - ENZYMATIC DEAMINATION**

- Ready-to-use, 2 liquid reagent system
- Linearity : 200 IU/L
- No interference from bilirubin, haemoglobin, triglycerides & ascorbic acid
- Pack - Size : 30 ml (1 x 20 ml, 1 x 10 ml)



CE

ISO 13485 : 2008  
ISO 9001 : 2008



G-54



G-55



**ACCUREX BIOMEDICAL PVT. LTD.**

**Head Office**

212, Udyog Mandir No. 1, 7/C,  
Bhagoji Keer Marg, Mahim,  
Mumbai - 400 016. INDIA.  
tel: +91[22] 67446744  
fax: +91[22] 67446755  
e-mail: [accurex@vsnl.com](mailto:accurex@vsnl.com)

**Branch Office**

201, Oriental House,  
Commercial Complex,  
Gulmohar Enclave,  
New Delhi - 110 049. INDIA.  
tel: +91[11] 26534305/10  
e-mail: [accurex@bol.net.in](mailto:accurex@bol.net.in)

**Plant**

G-54/55, MIDC Tarapur, Boisar,  
Thane - 401 506. INDIA.  
tel: +91[2525] 645911/12

[www.ACCUREX.org](http://www.ACCUREX.org)

Call us toll free on **1800 209 8456**