

TECHNICAL SPECIFICATION

Ventilation mode

IPPV, A/C, PCV, SIMV, SIGH, MANUAL

Ventilator parameter range

Flowmeter	O ₂ (0.1~10 L/min)
	N ₂ O (0.1~10 L/min)
	AIR (0.1~10 L/min)
Rapid oxygen supply	25 L/min~75 L/min
Tidal volume(Vt)	0, 20 mL~1500 mL
Frequency	1 /min~100 /min
I:E	4:1~1:8
PEEP	0 cmH ₂ O~30 cmH ₂ O
Pressure triggering sensitivity (Ptr)	-20 cmH ₂ O~0 cmH ₂ O (Based on PEEP)
Flow trigger sensitivity (Ftr)	0.5 L/min~30 L/min
Pressure control (PC)	5 cmH ₂ O~60 cmH ₂ O
SIGH	0 (off) 1/100~5/100
Apnea ventilation	OFF, 5s~60s
Pressure limit	20 cmH ₂ O~100 cmH ₂ O

Monitoring parameter

Frequency (Freq)	0 /min~100 /min
Tidal volume(Vt)	0 mL~2000 mL
MV	0 L/min~100 L/min
Oxygen concentration	15 %~100 %

Oscillogram

P-T (pressure – time)	
F-T (flow – time)	
P-V loop (pressure – volume loop)	

Alarm and protection

The AC power failure alarm	Power failure or no connection
Low voltage alarm for back up battery	< 11.3±0.3V
No tidal volume	≤5mL within 6s
High oxygen concentration alarm	19%~100%
Low oxygen concentration alarm	18%~99%
High airway pressure alarm	20 cmH ₂ O~100 cmH ₂ O
Low airway pressure alarm	0 cmH ₂ O~20 cmH ₂ O
High minute volume alarm	Adult (5 L/min~20 L/min)
	Paed (1 L/min~15 L/min)
Low minute volume alarm	0~10 L/min
Continuous pressure alarm	(PEEP+1.5 kPa) over 16s
Suffocation warning	5s~60s no spontaneous ventilation
The maximum limited pressure	< 12.5 kPa
Fan error	Show on screen
Oxygen deficit	Show on screen

Working condition

Gas source	O ₂ , N ₂ O, AIR
Pressure	280 kPa~600 kPa
Voltage	100~240V
Power frequency	50/60 Hz

Packing size

Wooden case packing size	L 920* W 970* H 1380mm
G.W.	156KG
N.W.	102KG
CBM	1.23m ³

Other models for your reference:



No. 9/5, 'Subam' T1, 3rd Floor, College Road, Nungambakkam, Chennai - 600 006.

Tel : 044-4301 5053, Mob: +91 9884833930 / +91 9840133930 email: sudhakar@nlms.in

S6100 Anesthesia System

ADULT · PEDIATRIC *Friendly Powerful Reliable*



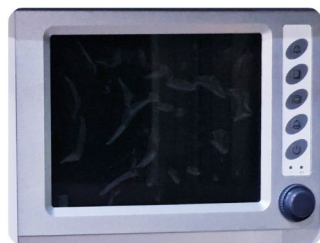
S6100 Anesthesia System

Application

The Anesthesia machine makes a good performance in Intensive Care Units (ICU), Operation room, Anesthesiology Department and other departments.

Professional design for adult, child and infant inhalation anesthesia and respiratory management, with advanced ventilation modes. Outstanding ergonomic design, it ranks high level in safety, stability and convenience as well as user experiences.

S6100 comfortable classic model, easy to use and be designed together with experienced experts to streamline your anesthesia workflow.



10.4" screen



Flowmeter



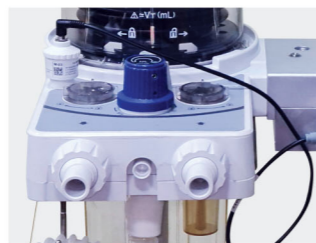
Breathing circuit



Pressure gauge



Bellow



APL valve



Halothane: 0~5% Enflurane: 0~5% Isoflurane: 0~5% Sevoflurane: 0~8%

1 pc vaporizer for standard, max 2 pcs.

Trust point

- Simplicity: 4 static casters with self-locking function.
- Precision in an anesthesia ventilator with multiple ventilation modes: IPPV, A/C, PCV, SIMV, SIGH and MANUAL.
- Flexible configurations able to customize your requirements.
- International standard and advanced technology suitable for wide range use.
- Compact interface and big screen give you better operating experience.
- Over 5,000 units are installed in more than 200 countries.
- Designed and manufactured by New Life Medical Systems.

Feature

- 10.4" TFT LCD Touch screen displays the Ventilation parameters, Alarm information and Oscillogram.
- High precision flowmeter, instantly know the fresh gas flow to your patient.
- Integrated breathing circuit design, ensure easy operating and keep tidy.
- Multiple working modes such as volume control and pressure limit, adapt to wide range patient.
- Vaporizer with temperature, pressure, flow compensation and self-lock function, keep safety anytime.
- Multiple parameters monitoring interface, make every parameter clear, let users know the patient conditions in all aspects.
- Pressure-time, low-time loop oscillogram and high precision ETCO₂, O₂ concentration show in real time.
- Vital sign monitor and anesthetic gas monitor are optional.
- ETCO₂ module and Anesthesia Gas Scavenging System (AGSS) are optional.

Safety

- 3 level alarm system, visual and sound alarm information.
- With multiple type of alarm, reminder and protection functions.
- Advanced power management control technology.
- Built-in backup battery provide the emergency power supply to the unit.
- Low O₂ pressure alarm and N₂O cut-off protection.