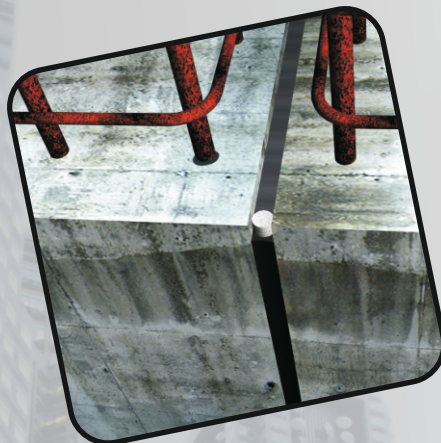
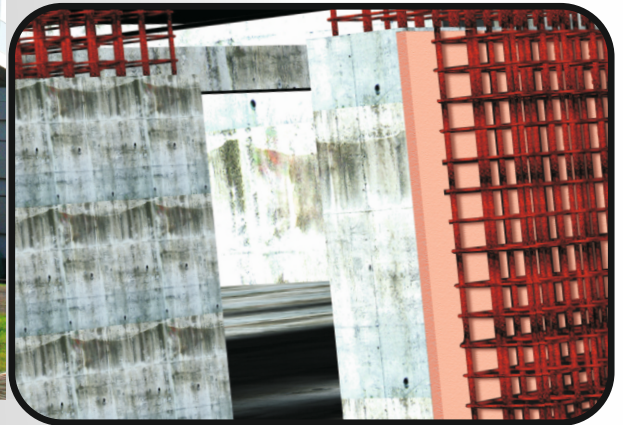
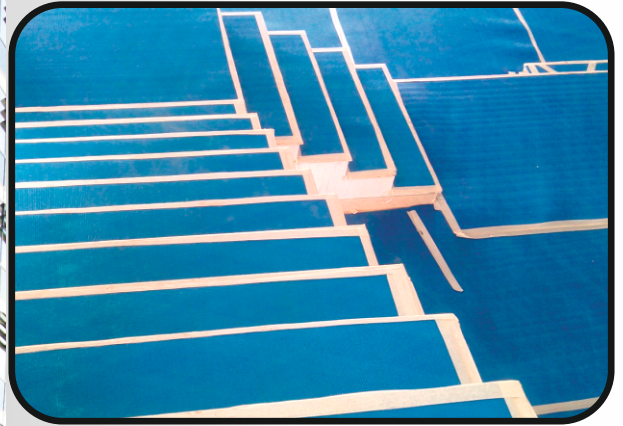


TEXCEL

BUILDING SOLUTIONS



Authorised Distributor

THE SUPREME INDUSTRIES LIMITED

Protective Packaging Division

1161/7, Basement, Naiwala, Karol Bagh, New Delhi- 110005
T. 011-410 24033 M. 9899036285 E. texcelbuildingsolutions@gmail.com

DURA vapour barrier



Brand	Features	Ideal for use in
<p>Formerly: SIL vapour barrier</p> <p>High performance water-vapour barrier material</p>	<ul style="list-style-type: none"> • Closed-cell hence negligible water / water-vapour absorption • Excellent Chemical resistance • Rot-proof and Bacteria resistant • Flexible • Ease of use 	<ul style="list-style-type: none"> • Bond-breaker, Separation Membrane in Building Foundations, Concrete Roads, Pavements etc.

DURAFill



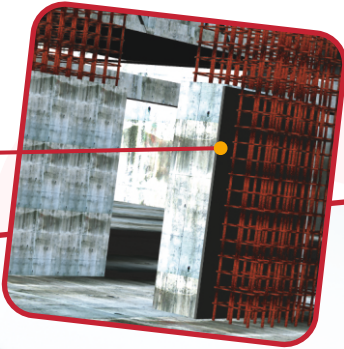
High performance expansion joint filler board

Brand	Features	Ideal for use in
<p>Formerly: SIL fill</p> <p>Alkali resistant, closed-cell, polymer based expansion joint filler material</p>	<ul style="list-style-type: none">• Closed-cell - Negligible water / moisture absorption• Bitumen-free• Non-staining, non-impregnated and non-bleeding. Does not disintegrate• Easy to use - No crumbs, dust or fibers• Can be cut with knife for easy installation• Excellent Chemical resistance - Unaffected by Alkalis, Alcohols, Detergents, Petrochemical products and most mild Acids• Excellent recovery hence; can accommodate joint movement• Does not discolour Sealants or Architectural substrates	<ul style="list-style-type: none">• Structural Expansion joint in buildings• Buildings brick and block work Isolation joints between adjacent constructions e.g. Buildings, around Manholes,• Drains and other insets in concrete etc.

DURABOARDHD100

The most compressible filler board for expansion joints

DURABOARDHD100 used in expansion joints in columns



The ideal material for expansion joint application

Brand	Features	Ideal for use in
<p>Formerly: SIL flex, CapcellHD100</p> <p>The most compressible filler board for Expansion Joints</p>	<ul style="list-style-type: none">• Closed-cell hence; negligible water / water-vapour absorption• Resilient - recovers more than 96%• Excellent chemical resistance• Thermally stable(from -40°C to $+70^{\circ}\text{C}$)• Bitumen free• Easy to use• Rot-proof and Bacteria resistant	<ul style="list-style-type: none">• Structural Expansion Joint filler for concrete brick and block work in Concrete Highways, Airport Runways, Parking Areas, Industrial Flooring, Taxi Tracks etc.• Isolation to In-fill Panels• Bridge Decks, Abutments, Pier Hinge Joints etc.• As a backup support for Sealant• Water retaining and Water excluding Structures

DURAshield



**The ideal material for Spandrel
Insulation in Glass Facade Buildings**

Brand	Features	Ideal for use in
<ul style="list-style-type: none">• Non-fibrous, fire retardant (FR), closed-cell, crosslinked Polyethylene Foam	<ul style="list-style-type: none">• Polymer based non-deteriorating insulation material• Closed-cell hence; negligible water / water-vapour absorption• Easy to use- saves considerable time and money• Low and stable 'K' value hence; thickness required of 'DURAsield' is lower as compared to Glass Wool• Environment friendly - Non-fibrous, non-toxic and non-carcinogenic• Excellent Chemical resistance• Resistant to growth of fungi and vermin	<ul style="list-style-type: none">• Spandrel Insulation



Bonding for assured strength with DURARods

Brand	Features	Ideal for use in
<p>Formerly: SIL seal, Back-up Rods</p> <p>Closed-cell, polymer based Foam filler material in circular profile</p>	<ul style="list-style-type: none"> • Closed-cell hence; negligible water / water-vapour absorption • Resilient - recovers more than 96% • Excellent Chemical resistance • Bitumen-free • Easy to use • Cost-effective space filler • Allows unrestrained expansion and contraction of sealants • Eliminates bubbling of sealants • Non-staining 	<ul style="list-style-type: none"> • Pre-cast Panel Joints • Coping Joints • Contraction Joints • Expansion Joints • Back-up to Sealants in • Structural Glazing systems • Glazing Joints • Isolation Joints • Dynamic Joints in Masonry • Window and Door frame perimeters • Control Joints

DURAFloorprotector

New generation product for floor protection

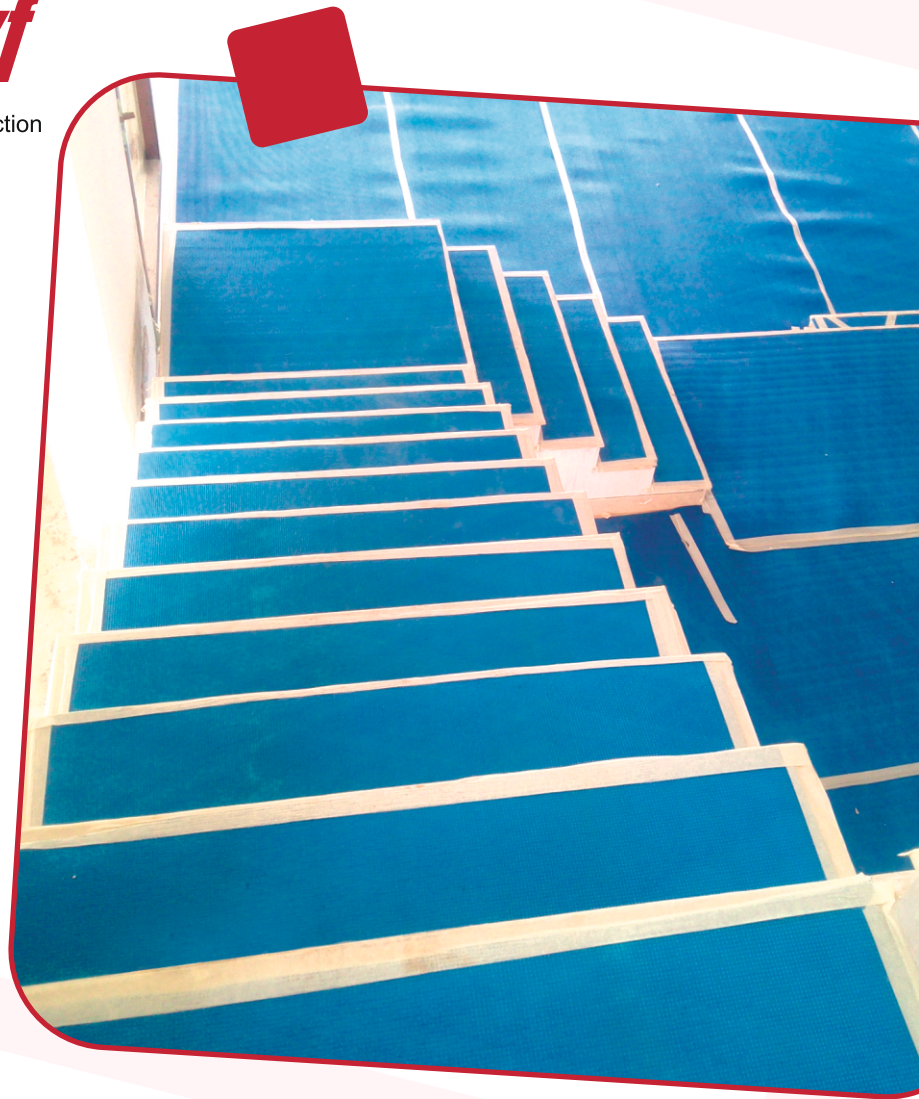


Brand	Features	Ideal for use in
Membrane Protection Board	<ul style="list-style-type: none">• Closed-cell hence; negligible water / water-vapour absorption• Light-weight• Resilient• Durable• Chamfered edges• Easy to use	<ul style="list-style-type: none">• Protects waterproofing membranes and liquid applied waterproofing membranes in horizontal and vertical applications• <i>Horizontal</i> - Used to protect damp proofing and gas resistant membranes prior to and during casting over site concrete, load bearing slabs and screeds• <i>Vertical</i> - To protect tanking membranes on retaining walls against mechanical damage during back filling operations and subsequent settlement• <i>Movement Joints</i> - Suitable for forming differential movement joints when new construction abuts an existing structure• <i>Temporary protection</i> - Recommended for use as temporary protection to finished areas such as paving, floor tiling other than PVC, stair treads and risers, marble columns etc.

DURAPROTECTOR-Xf

High strength product for floor protection

High performance reusable & recyclable composite material suitable for floor protection



Brand	Features	Ideal for use in
New generation, cost-effective product for floor protection	<ul style="list-style-type: none">• Anti-slip properties provide a safe work environment• Hassle-free compared to POP, resin paper, plastic runners or drop cloths• Does not absorb Paint, Oil, Grease or cleaning agents• Flexible - can be cut to fit in any space and works well on either side - vacuum or sweep clean and reusable• Polymer based and flexible yet tough• Environment friendly• Does not promote growth of Bacteria and Fungi• Inert – No effect of Chemicals	<ul style="list-style-type: none">• Keep job site floors safe from damage and debris. 'DURAFloorprotector' is reusable, reversible surface protection for the professional builder and craftsman Protects Concrete, Marble, Granite and other counter surfaces• Provides cushioned universal floor protection for Wood, Ceramic, and Vinyl floors during construction• Protects Hardwood, Ceramic tiles, Linoleum and Carpet floors from damage during construction or remodeling• Protects Sinks and Tubs during building or remodeling• Protects Walkways and Decks during home repairs