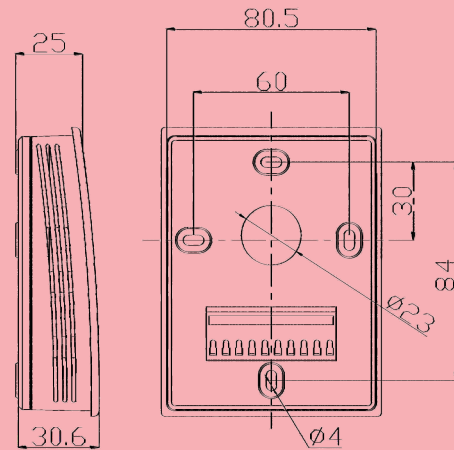
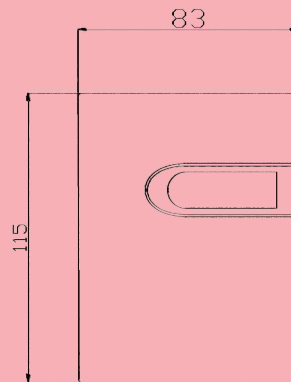
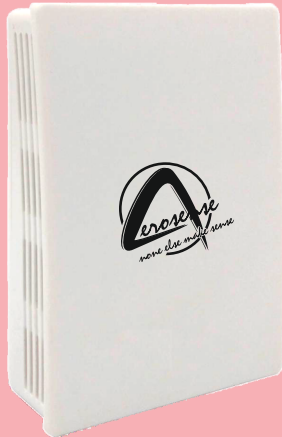




AEROSENSE<sup>TM</sup>

SERIES TTW

## WALL MOUNT TEMPERATURE TRANSMITTER



The Series TTW room temperature transmitters are designed for use in environmental monitoring and control systems where high performance and stability are demanded.

### FEATURES:

- Precision RTD sensing element
- Multiple output options
- Over voltage and reverse polarity protection

### APPLICATIONS:

- Room or indoor building space temperature monitoring

### SPECIFICATIONS:

**Temperature Sensor:** Pt 1000  $\Omega$  RTD , Class A

**Range:** 0-50 °C

**Temperature Limits:** -20°C to 60° C

**Accuracy:**  $\pm 0.5^{\circ}\text{C}$ @ 0-50°C

**Power Requirements:** 13 to 35 VDC for current models, 16 to 35 VDC or 16 to 28 VAC for voltage models

**Output:** 4-20 mA or 0-10 VDC  
(depending on model)

**Enclosure Rating:** IP30

**Weight:** 116 g

**Agency Approval:** CE

MODEL CHART	
Model	Output
TTW-I	Output 4-20 mA
TTW-V	0-10 VDC
TTW-MOD	RS-485/MODBUS COMMUNICATION

### SIMILAR PRODUCTS:

TTD Duct Mount Temperature Transmitter

RHX-W Wall Mount T/RH Transmitter

RHX-D Duct Mount T/RH Transmitter

## WIRING:

- Use maximum 18 AWG wire for wiring to terminals. Refer fig 1 and 2 for wiring information.
- The Series TTW Temperature Transmitter can be ordered for current or voltage outputs.
- For Voltage output models, units should be wired as figure 1. For current output models, units should be wired as figure 2.

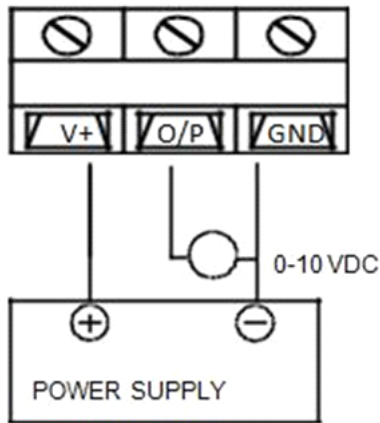


FIGURE 1

FOR TTW-V (Voltage output) Model

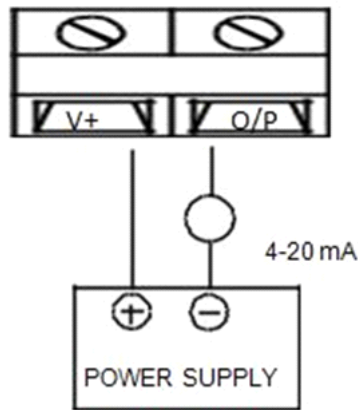
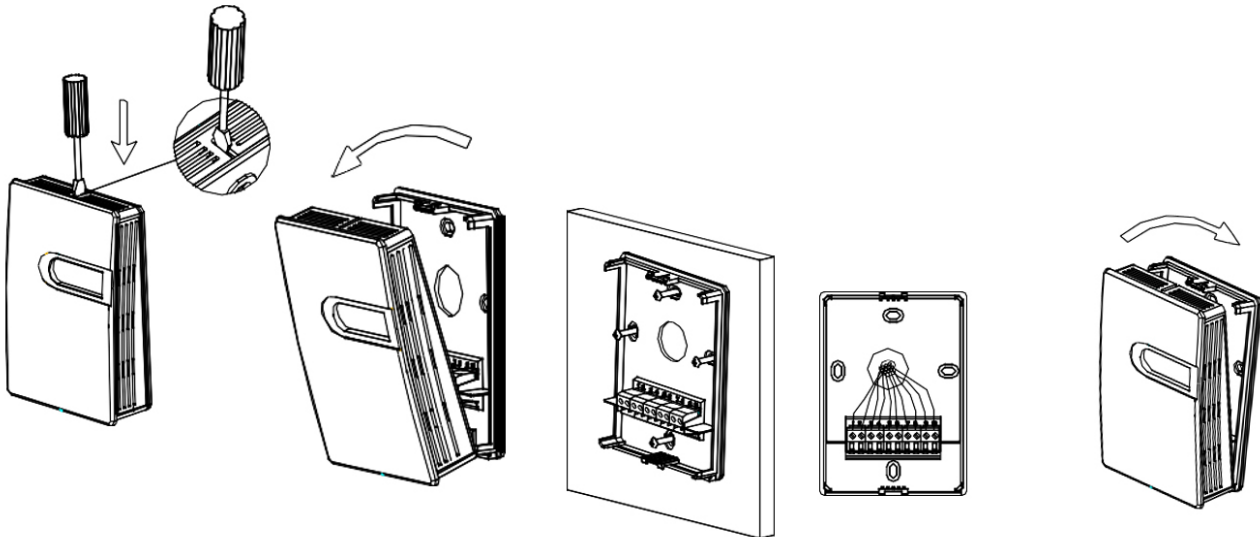


FIGURE 2

FOR TTW-I (Current output) Model

## INSTALLATION:



- It should be installed vertically on the wall. The installation site should be far away from heater, cooler, fan, humidifier, dehumidifier, and other external influences.
- Use a screwdriver, insert into the snap at the upper side of the housing, and push down a little, then open the front cover.
- Pull wires through the sub base hole and make the necessary connections.
- Restore the front cover, and finish the installation.