



*Redefining Power*





**JAIDEEP A TRUSTED BRAND FROM A DECADE IN THE  
FIELD OF ENERGY**

**JAIDEEP POWER SOLUTION PVT LTD.**

**Established on 05<sup>th</sup> Oct 2010**

**Brand Established itself for its Continued  
Quality, Reliability & After Sales Services**

**REGISTERED & ADMIN OFFICE**

**Plot No 48, Parshavanath Apartment, Opp Panvelkar Plaaza, (HDFC Bank), Station  
Road, Dalal Gym Campus Ambernath (East), Thane, Maharashtra-421501**

**Mobile No- 09322806650, 09320806650, 08422887727. 9768929054**

**Mail - [jaipowsol@gmail.com](mailto:jaipowsol@gmail.com)/[jaideepgensets@gmail.com](mailto:jaideepgensets@gmail.com)/[jpspltd@gmail.com](mailto:jpspltd@gmail.com)**

## JAIDEEP POWER SOLUTION PVT LTD, DIVISIONS DETAILS

### DG Set Division

*Supernova ECO Series 10KVA To 320KVA (Authorised Dealer)*

*Supernova Higher KVA 500KVA To 2500KVA (Authorised Dealer)*

### Sales & Technical Contacts

*Mr Atul Padwal-8422887727*

*Mr Jaideep Deshmukh-9322806650*

*Mail Id-jaipowsol@gmail.com*

### Electrical Division

*Nirmaan Transformer 50KVA To 5000KVA*

*Ring Main Unit ABB, Kiosk,*

### Sales & Technical Contact

*Mr Yogesh Jambhekar*

*Mail id- jpspltd@gmail.com*

## JAIDEEP POWER SOLUTION PVT LTD, DIVISIONS DETAILS

### Stabilizer Division

*KRYKARD 5KVA To 5000KVA*

### Sales & Technical Contacts

*Jaideep Deshmukh-9322806650*

*Daisy Michael-9320806650*

*Mail id-jaideepgensets@gmail.com*

### Manufacturing Division

*APFC, LTHT, Distribution Panel,*

*Genset Trolley, Acoustic Enclosure for Gensets, Chillers, Compressors.*

### Sales & Technical Contacts

*Mr Jaideep Deshmukh-9322806650*

*Mail id [jaipowsol@gmail.com](mailto:jaipowsol@gmail.com)*

# SUPERNOVA

---

## Eco Series

10 kVA TO 62.5 kVA



- Radiator cooled / Water Cooled Engines runs in all weather Condition
- 2 to 4 Cylinder's in Line up to 62.5Kva DG Set
- All Safety features with Microcontroller based Controller
- Low operating cost & maintenance cost.
- Highest Block load Capacity.
- Compact in Size.
- Ready to Use & Suitable for outdoor application.
- In house Manufactures DG Set with Stringent quality norms at plant.
- Longest Service interval in the segment 500hrs/1year



**SUPERNOVA**  
Eco Series

30 kVA TO 160 kVA



- 4 to 6 Cylinder's in Line up to 160 Kva DG Set
- All Safety features with Microcontroller based Controller for Monitoring different parameters of DG Set.
- Low operating cost & maintenance cost.
- Highest Block load Capacity.
- Compact in Size.
- Ready to Use & Suitable for outdoor application.
- In house Manufactures DG Set with Stringent quality norms at plant.
- Longest Service interval of 500hrs-700Hrs/1 Year.



**SUPERNOVA**  
Eco Series

180 kVA TO 320 kVA



- *CRDE Technology in all range.*
- *6 Cylinder's in Line up from 180Kva to 320 Kva DG Set*
- *All Safety features with Microcontroller based Controller for Monitoring different parameters of DG Set.*
- *Low operating cost & maintenance cost.*
- *Highest Block load Capacity.*
- *Compact in Size.*
- *Ready to Use & Suitable for outdoor application.*
- *In house Manufactures DG Set with Stringent quality norms at plant*



*Supernova Eco Series, range from 10Kva up to 320Kva*

*Esteemed Customer*

- Reliance Jio Infocom
- JSW Steel JSW ISPAT
- Angel Broking
- Hyva India Pvt Ltd
- Wockhard Hospital
- NG Projects Ltd
- BRL Logistics
- Landmark Cars Pvt Ltd
- VSN Switchgear India Pvt Ltd
- Magma Industries



Samsung Dual Camera  
 Shot with my Galaxy M20



Samsung Dual Camera  
 Shot with my Galaxy M20



**Admin & Registered Office : - Plot No 48, Parshavanath Apartment, Dalal Gym Campus, Opp Panvelkar Plaaza, Station Road, Ambernath E Thane, Maharashtra-421501 Email :- jaipowsol@gmail.com Contact No 09320806650**



## *Supernova Make Perkins DG Set , range Starts from 400Kva up to 2250Kva*

- Fully Electronic Engine.*
- High ambient/altitude works without de-rate at 50 degree Celsius*
- Manufactured at CAT plant Hosur.*
- 85+ years of Manufacturing base.*
- 9,00,000 plus engine manufacturing base*
- 60% step load capacity*
- MEVI unit fuel injectors*
- Least oil & Fuel consumption*
- Lower Spares & Service Cost.*



## Supernova Make Perkins DG Set , range Starts from 400Kva up to 2250Kva

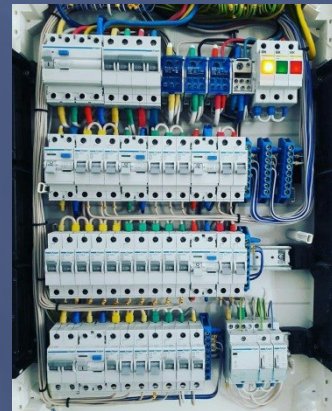
### Perkins Esteemed Customer

- MIDC Nagothane.
- Badgujar & Company
- DK Pharma Chem Pvt Ltd
- Gujarat Agro farm Pvt Ltd
- Exim Exports Pvt Ltd,
- Gala Shrink Fit Pvt Ltd,
- DB Realities Pvt Ltd,
- Kaynes Technologies Ltd,
- Hexagon Pharma Pvt ltd,
- US Pharma Pvt Ltd,
- Aqua chem Pvt Ltd.



# Electrical Division.

- *TURNKEY INDUSTRIAL ELECTRICAL CONTRACTOR.*
- *HT DISTRIBUTION NETWORK.*
- *LT DISTRIBUTION NETWORK.*
- *SUBSTATION ELECTRICAL CONTRACTOR.*
- *ACTIVITIES TO GETTING LOAD SANCTION PERMISSION & PROJECT CHARGING PERMISSION FROM GOV AUTH LIKE MSEDCL or ANY OTHER STATE LEVEL GOVT BODIES & PWD.*
- *ELECTRICAL DESIGN WITH MD CALCULATION, SLD PREPARATION, HT/LT CABLE CALCULATION AS PER LOAD DEMAND FOR SMALL AS WELL AS HUGE COMMERCIAL PROJECT.*
- *FOR TENDERING PROJECT PRE BID ELECTRICAL DESIGN, DETAILED ELECTRICAL DESIGN AND COST CALCULATION OF ELECTRICAL PART IN THE TENDER.*
- *CONSULTING FOR COMPLETION OF ANY TYPE OF ELECTRICAL PROJECT TO FINISH SATISFACTORY AS PER RULES AND REGULATION OF HOVT POLICIES.*
- *LIASONING, ERECTION AND COMMISSIONING OF TURNKEY PROJECT.*



*TRANSFORMER WE can offer following :-*

- 1) SUPPLY OF NEW TRANSFORMER
- 2) OVERHAULING OF TRANSFORMER
- 3) MAJOR REWINDING AT FACTORY WITH OUR TIE UP MANUFACTURING UNIT.
- 4) SUPPLIER OF TRANSFORMER ASSECCORIES
- 5) AMC FOR TRANSFORMER



**Admin & Registered Office : - Plot No 48, Parshavanath Apartment, Dalal Gym Campus, Opp Panvelkar Plaaza, Station Road, Ambernath E Thane, Maharashtra-421501 Email :- jaipowsol@gmail.com Contact No 09320806650**

## Stabilizer Division

### *Jindals AVC 30KVA To 5000KVA*

- *Linear type on-load voltage regulators with step less regulation.*
- *Microcontroller based design*
- *Pan-India sales & service network*
- *High-efficiency about 0.99*
- *Wide input range available in 50Hz as well as 60Hz*
- *Designed for 100% continuous duty cycle and for a life of 18-20 years at extreme condition*
- *Rugged design*



## BRIEF TECHNICAL SPECIFICATIONS

JINDAL'S AVCs are available in a wide range & various models. Besides, we also manufacture bespoke designs as per specific customer requirements. The standard models conform to the following specifications:

CAPACITY	30 KVA to 5000 KVA				
TECHNOLOGY	Linear Type On-Load Voltage Regulators with Stepless Regulation (also referred to as Vertical Rolling Contact or Columnar Design)				
CONTROL MODULE	Microprocessor based				
NO. OF PHASES	Three-Phase				
FREQUENCY	50 / 60 Hz ± 5%				
TYPE	BALANCED (Common Control for all three phases. Suited for Balanced Input supply & up to 40% unbalanced load)		UNBALANCED (Individual Phase Control. Suited for unbalanced input supply and unbalanced load)		
LOAD VARIATION	Admitted from 0 to 100%				
INSTALLATION	INDOOR / OUTDOOR as per site requirement				
COOLING	Natural Oil-Cooled, ONAN (available in all models) (Air Cooled Stabilizers also available upto 4750 kVA, please request for a separate catalogue.)				
OUTPUT VOLTAGE	400V ± 1% (Ph - Ph) / 230V ± 1% (Ph - N)				
INPUT VOLTAGE*	350 - 450V	340 - 460V	330 - 470V	320 - 460V	300 - 460V
	*[wider & asymmetrical ranges are manufactured on order]				
EFFICIENCY	~ 99.5 %	> 99 %	~ 99 %	~ 98.5 %	> 98 %
DUTY CYCLE / LIFE	Designed for 100% Continuous Duty Cycle & for a life of 18 - 20 years at extreme conditions				
RESPONSE TIME	Less than 20 milliseconds				
CORRECTION RATE	6 - 15 Volts / second (up to 500 KVA) and 3 - 8 Volts / second (above 500 KVA)				
WAVEFORM DISTORTION	Virtually Nil				
AMBIENT TEMPERATURE	-10 to +45 °C				
TEMPERATURE RISE	Designed for 35 °C rise above ambient at full load (against IEC std. of 45 °C)				
MOUNTING	On Unidirectional Wheels				
TERMINATIONS	Aluminium Bus - Bars are provided for Input & Output in a common junction box				

## ADVANTAGES OF AUTOMATIC VOLTAGE CONTROLLER (AVC)

JINDAL'S AVC resolves 99% of voltage problems automatically, and ensures steady voltage supply round the clock. Some key advantages of installing an AVC are:

- Up to 80% Reduction in Breakdown of Electrical Equipment
- Up to 30% Savings in Electricity Costs
- Enhanced Productivity of Plant
- Uniform Quality of End Product
- Reduction in MDI (Peak Demand)
- Improvement in Power Factor
- 80% Depreciation as per Income Tax Act in India (Being an energy saving device)

The table below gives approx. quantitative advantages of AVC at various voltage fluctuation levels:

Input Voltage Variation	%Reduction in Breakdown Possible		%Power Saving Possible	
	Motor Load Below 10 HP	Lighting Load	Motor Load Below 10 HP	Lighting Load
380-400 Volts	Nil & No Servo Stabilizer Required			
380-420 Volts	5%	10%	3%	5%
380-440 Volts	10%	20%	5%	10%
380-460 Volts	40%	40%	7%	20%
380-480 Volts	60 - 80%	60 - 80%	10%	30%

# AUTOMATIC VOLTAGE CONTROLLER

## *Emerson – Vertive UPS*

*Range Starts from 1Kva to 1000Kva.*

- Fully-digital control with high output voltage
- Inbuilt isolation transformer
- Early Warning of UPS System Status
- Periodic Battery Testing
- Power-Factor Correction
- Lightning and Surge Protection
- Wide Input Voltage Window



# OUR MANUFACTURING RANGE

- 1) MCC PANEL / PLC PANEL / DISTRIBUTION PANEL  
AMF PANEL / APFC PANEL
- 2) ACOUSTIC ENCLOSER MANUFACTURER FOR DG SET,  
CHILLERS, COMPRESSORS.
- 3) Genset Trolley.
- 4) MANUFACTURER OF LIFT INVERTER.

