

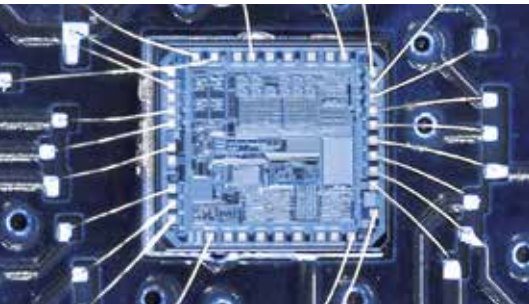
Program Overview

CONTRINEX
SENSORS SAFETY RFID



A
Swiss
Company

CONTRINEX - A WORLD OF SENSORS



OWN ASICS
TECHNOLOGY LEADER
SOLUTION PARTNER

At a glance

- ✓ Technology leading manufacturer of inductive and photoelectric sensors as well as Safety and RFID systems
- ✓ World market leader for miniature sensors, sensors with long operating distances and devices for particularly demanding operating conditions (all-metal, high-pressure and high-temperature resistant sensors)
- ✓ Represented in over 60 countries worldwide, headquarters in Switzerland
- ✓ 14 own subsidiaries in all major markets
- ✓ More than 500 employees worldwide
- ✓ 8000 products



Contrinex Headquarters, Switzerland

GLOBAL EXPERIENCE, LOCAL SUPPORT

Production

Contrinex manufactures its own sensors, safety and RFID systems in 4 production locations: Switzerland (since 1972), Hungary (since 1995), China (since 2003) and Brazil (since 2009).



Contrinex Hungary - new factory inaugurated in 2013

CONTENTS

SENSORS **INDUCTIVE**

BASIC	4
MINIATURE from 3 x 12 mm	4
EXTREME the world's toughest	5
EXTRA PRESSURE 100 bar	5
HIGH PRESSURE 1000 bar	6
EXTRA TEMPERATURE 120°C	6
HIGH TEMPERATURE 230°C	7
WASHDOWN Ecolab approved	7
ANALOG OUTPUT	8
WELD-IMMUNE	8

PHOTOELECTRIC

CYLINDRICAL SUBMINIATURE	9
CYLINDRICAL MINIATURE	9
CYLINDRICAL SMALL	10
CUBIC SUBMINIATURE	10
CUBIC MINIATURE	11
CUBIC SMALL	11
CUBIC COMPACT	12
FIBER-OPTIC AMPLIFIERS, FIBERS	12

ULTRASONIC

MINIATURE	13
SMALL	13
COMPACT	13

CAPACITIVE

BASIC	13
HIGH PERFORMANCE	13

SAFETY **LIGHT CURTAINS**

FINGER PROTECTION	14
HAND PROTECTION	14

ACCESS CONTROL BARRIERS

ACCESS CONTROL	14
----------------	----

RFID **LOW FREQUENCY**

(125 kHz technology)

SYNTHETIC components	15
ALL-METAL components	15
INTERFACES for industrial fieldbuses	15

HIGH FREQUENCY

(13.56 MHz technology)

STANDARD components	15
TAGS EMBEDDABLE IN METAL	15
TAGS FOR HIGH TEMPERATURE 250°C	15
R/W MODULES WITH USB	15
INTERFACES for industrial fieldbuses	15

For special products see Contrinex catalog, downloadable from our website: www.contrinex.com



SENSORS

INDUCTIVE

EXCELLENCE IN NORMAL ENVIRONMENTS

BASIC

KEY ADVANTAGES

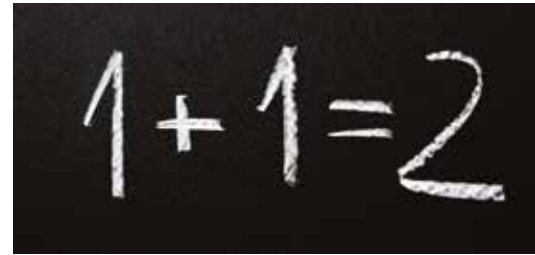
- ✓ Exceptional price/performance ratio
- ✓ Excellent accuracy
- ✓ Outstanding temperature compensation
- ✓ Vibration and shock resistant
- ✓ Long operating distances



INDUSTRIES

Textiles, green energy, machine tools, automotive manufacturing, logistics, packaging machines

Housing size (s _n mm)	Ø 6.5 mm	M8	C8	M12	M18	M30	C40	C44
Classics	1.5 ... 2	1.5 ... 4	1.5 ... 2	2 ... 8	5 ... 8	10 ... 15	15 ... 40	15 ... 40
Extra Distance	3	3 ... 6	3	6 ... 10	12 ... 20	22 ... 40	-	-



Textiles



Green energy



INDUCTIVE

FULL FUNCTIONALITY, SMALLEST SIZE

MINIATURE

KEY ADVANTAGES

- ✓ Smallest self-contained inductive sensors on the market
- ✓ Miniature sensors are ideal for mounting where space is limited
- ✓ Outstanding temperature stability from -25°C (-13°F) to +70°C (+158°F)
- ✓ High switching frequency up to 5000 Hz
- ✓ Light weight of the sensor
- ✓ Electronics vacuum potted for optimum long-term reliability under high stress



INDUSTRIES

Micromechanics, robotics, machine tools, automation equipment, special purpose machines

Housing size (s _n mm)	Ø 3 mm	M4	Ø 4 mm	M5	C5
Classics	0.6 ... 1	0.6 ... 1	0.8 ... 1.5	0.8 ... 1.5	0.8 ... 1.5
Extra Distance	-	-	2.5	2.5	-



Robotics



Linear drive technology



INDUCTIVE

EXTREME DURABILITY IN HARSH ENVIRONMENTS

EXTREME

KEY ADVANTAGES

- ✓ Mechanically and chemically extremely robust
- ✓ Corrosion resistant
- ✓ IP 68 and IP 69K, sea-water resistant
- ✓ Pressure resistant up to 80 bar (1160 psi)
- ✓ Factor 1 on steel and aluminum



Machine tools



Mobile equipment



INDUSTRIES

Automotive manufacturing, mobile equipment, packaging, machine tools

Housing size (s _n mm)	M8	M12	M18	M30
Full Inox	3 ... 6	2 ... 15	5 ... 20	20... 40

INDUCTIVE

PRESSURE RESISTANT UP TO 100 BAR (1451 PSI)

EXTRA PRESSURE

KEY ADVANTAGES

- ✓ Pressure resistant up to 100 bar (1451 psi)
- ✓ Mechanically and chemically rugged
- ✓ Impervious: IP 68
- ✓ Gas-tight sensing face
- ✓ Miniature devices



Micromechanics



Pump and valve control



INDUSTRIES

Pneumatics, lubrication systems, pumps, valves

Housing size (s _n mm)	Ø 3 mm	M5	Ø 6.5 mm
Classics	0.8	0.6	-
Extra Distance	-	-	2.5

SENSORS

INDUCTIVE

PRESSURE RESISTANT UP TO 500 BAR (7255 PSI)

HIGH PRESSURE

KEY ADVANTAGES

- ✓ Highest operating (500 bar / 7255 psi) and peak pressure (1000 bar / 14510 psi) on the market
- ✓ Resistant to pressure cycles – 50 times longer lifetime under pressure than the market standard
- ✓ Gas-tight sensing face
- ✓ Large temperature range -25°C (-13°F) ... +100°C (+212°F)



Hydraulic cylinders with sensors



Concrete pumps



INDUSTRIES

Hydraulic and fluid power, concrete pumps, injection molding machines

Housing size (s _n mm)	M5 / P5	M8 / P8	M12 / P12	M14 / P20
Extra Distance	1	1.5	1.5 ... 2.5	3
Full Inox	-	-	1.5	-

INDUCTIVE

TEMPERATURE RESISTANT UP TO +120°C (+248°F)

EXTRA TEMPERATURE

KEY ADVANTAGES

- ✓ Temperature resistant up to +120°C (+248°F)
- ✓ Excellent long term reliability
- ✓ Outstanding accuracy



Aerospace



Automotive manufacturing industry



INDUSTRIES

Machine tools, green industry, aerospace, automotive manufacturing

Housing size (s _n mm)	M5	M8	M12	M18
Classics	0.8	4	2 ... 4	5

INDUCTIVE

TEMPERATURE RESISTANT UP TO +230°C (446°F) HIGH TEMPERATURE

KEY ADVANTAGES

- ✓ Models with external electronics for temperatures of up to +230°C (+446°F)
- ✓ Models with integrated electronics for temperatures of up to +180°C (+356°F)
- ✓ Excellent long term reliability



INDUSTRIES

Paintshops, surface treatment, bakery equipment

Housing size (s _n mm)	M8	M12	M18	M30	M50
Classics	2	3	5	10	25



Bakery equipment



Paintshop in automotive industry



INDUCTIVE

ECOLAB APPROVED FOR HARSHTEST CLEANING PROCESSES

WASHDOWN

KEY ADVANTAGES

- ✓ Corrosion resistant
- ✓ Food safe
- ✓ Mechanically and chemically rugged
- ✓ Full Inox housing
- ✓ IP 68 / IP 69K protection
- ✓ One-piece full-metal housing
- ✓ Waterproof sensor, sea-water resistant



INDUSTRIES

Food and beverage, pharmaceutical industry, offshore and marine applications, industrial cleaning systems

Housing size (s _n mm)	M12	M18	M30
Full Inox	6	10	20



Food processing



Marine applications



SENSORS

INDUCTIVE

ANALOG OUTPUT FOR DISTANCE CONTROL

ANALOG OUTPUT

KEY ADVANTAGES

- ✓ Longest sensing ranges
- ✓ Best temperature stability
- ✓ Excellent repeat accuracy
- ✓ Resolution in μm range



INDUSTRIES

Machine tools, printing

Housing size (s_n mm)	C8	M8	M12	M18	M30
Extra Distance	0 ... 4	0 ... 4	0 ... 6	0 ... 20	0 ... 40



Position control



Machine tools



INDUCTIVE

DURABLE AND RELIABLE IN WELDING CELLS

WELD-IMMUNE

KEY ADVANTAGES

- ✓ Resistant to electromagnetic fields of up to 40 millitesla
- ✓ Extremely robust
- ✓ Easy to clean – even using harsh methods
- ✓ No false switching caused by metal dust or chips
- ✓ Factor 1
- ✓ No extra protection needed
- ✓ Long operating distances



INDUSTRIES

Automotive manufacturing, welding equipment

Housing size (s_n mm)	M12	M18
Full Inox	6	10



Automotive manufacturing industry



Welding equipment



PHOTOELECTRIC

THE SMALLEST ON THE MARKET

CYLINDRICAL SUBMINIATURE

KEY ADVANTAGES

- ✓ Ø 4 and M5 housings for target detection in limited spaces
- ✓ Rugged metal housing
- ✓ Accurate target detection due to cylindrical light beam
- ✓ Rugged sapphire glass or glass sensing face, scratch and chemically resistant
- ✓ Shock and vibration resistant due to fully vacuum potted electronics
- ✓ High system reserves (excess gain)



INDUSTRIES

Precision engineering, semiconductors, electronics, vending machines

Housing size (s _n mm)	Ø 4 mm	M5
Diffuse	10 ... 50	10 ... 50
Through-beam	-	250



Precision processes



Electronics



PHOTOELECTRIC

M12 STANDARD SIZE FOR MULTIPLE USES

CYLINDRICAL MINIATURE

KEY ADVANTAGES

- ✓ M12 miniature sensor series
- ✓ Rugged metal housing
- ✓ Accurate and speed independent target detection; response time 0.5 msec (laser: 0.1 msec)
- ✓ Shock and vibration resistant due to fully vacuum potted electronics
- ✓ High system reserves (excess gain)
- ✓ Easy adjustment (due to visible red light)
- ✓ Laser sensor (protection class 2)



INDUSTRIES

Automotive manufacturing, machine tools, logistics, textiles, green energy, packaging, filling machines

Housing size (s _n mm)	M12	M12 Laser
Diffuse	300	-
Reflex	1500	-
Through-beam	10,000	50,000



Packaging



Textiles



SENSORS

PHOTOELECTRIC

M18 STANDARD SIZE, INCLUDING 90° SENSING CYLINDRICAL SMALL

KEY ADVANTAGES

- ✓ Small sensor M18
- ✓ Models for lateral sensing
- ✓ Rugged metal housing
- ✓ Accurate and speed-independent target detection
- ✓ Shock and vibration resistant due to fully vacuum potted electronics
- ✓ High system reserves (excess gain)
- ✓ Easy adjustment (due to visible red light)
- ✓ Laser sensor (protection class 2)



INDUSTRIES

Automotive manufacturing, machine tools, logistics, textiles, green energy, packaging, filling machines, aerospace

Housing size (s _n mm)	M18	M18W (90°)	M18 Laser
Diffuse	40 ... 600	40 ... 600	40 ... 250 / 60 ... 600
Reflex	2000	2000	-
Through-beam	20,000	20,000	50,000
Background suppression	10 ... 120	10 ... 120	-



Textiles



Filling machines



PHOTOELECTRIC

5 X 7 MM STEEL HOUSING AND NARROW FOCUS CUBIC SUBMINIATURE

KEY ADVANTAGES

- ✓ Cubic 5 x 7 x 40 mm sensors
- ✓ Rugged metal housing
- ✓ Accurate target detection due to cylindrical light beam
- ✓ Rugged sapphire-glass sensing face, scratch and chemically resistant
- ✓ Shock and vibration resistant due to fully vacuum potted electronics
- ✓ High system reserves (excess gain)



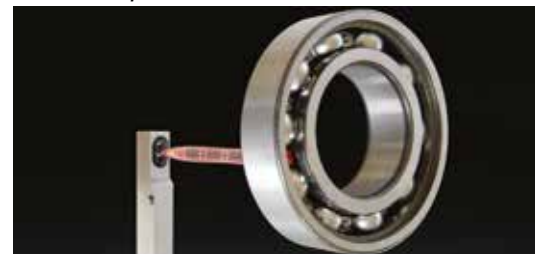
INDUSTRIES

Precision engineering, semiconductors, electronics, vending machines

Housing size (s _n mm)	□ 5 x 7 x 40 mm
Diffuse	20 / 50 / 90



Precision processes



Vending machines



PHOTOELECTRIC

POWERFUL SENSORS IN 30 X 30 MM HOUSING CUBIC MINIATURE

KEY ADVANTAGES

- ✓ Complete miniature sensor series \square 30 x 30 x 15 mm in rugged Crastin® housings
- ✓ Shock and vibration resistant due to fully vacuum potted electronics
- ✓ Diffuse sensors with precise background suppression
- ✓ Polarizing filter (reflex sensors)
- ✓ Changeover outputs
- ✓ Analog outputs



INDUSTRIES

Packaging, logistics, filling machines

Housing size (s _n mm)	\square 30 x 30 x 15 mm
Diffuse	600 / 1200
Reflex	2000 / 4000
Through-beam	6000 / 12,000
Background suppression	15 ... 200
Analog output	10 ... 100



Conveyor solutions



Logistics



PHOTOELECTRIC

EXCELLENT VALUE FOR DEMANDING APPLICATIONS CUBIC SMALL

KEY ADVANTAGES

- ✓ Small sensor series for peak performance
- ✓ Shock and vibration resistant due to fully vacuum potted electronics
- ✓ Ecolab tested and approved
- ✓ Sensing face of glass or coated plastic
- ✓ Fiber-optic amplifiers (blue light and high frequency)
- ✓ Color sensor



INDUSTRIES

Logistics, packaging, filling machines, printing, quality control, sorting processes, food and tobacco, wood processing machines

Housing size (s _n mm)	\square 40 x 40 x 19 mm	\square 40 x 50 x 15 mm
Diffuse	2000	30 ... 1200
Reflex	6000	4000
Through-beam	15,000	50,000
Background suppression	-	30 ... 500
Color (diffuse)	-	30 ... 40



Sorting processes



Printing



SENSORS

PHOTOELECTRIC

TOP QUALITY, RUGGED AND COST-EFFECTIVE CUBIC COMPACT

KEY ADVANTAGES

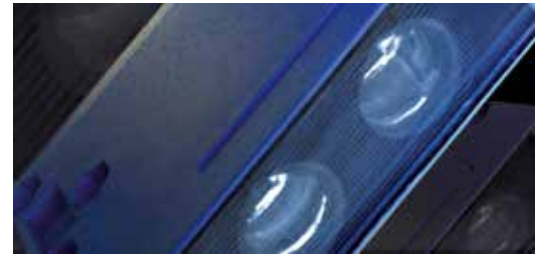
- ✓ Universal sensor series \square 50 x 50 x 18 mm and \square 65 x 83 x 25 mm for rough industrial applications
- ✓ Designed to cost
- ✓ AC/DC models
- ✓ Various connections possible



INDUSTRIES

Automotive manufacturing, machine tools, logistics, textiles, green energy, packaging, filling machines

Housing size (s _n mm)	\square 50 x 50 x 18 mm	\square 65 x 83 x 25 mm
Diffuse	300 / 800	2000
Reflex	4000	6000
Through-beam	15,000	-
Background suppression	-	50 ... 1000



Packaging



Logistics



PHOTOELECTRIC

FIBER-OPTIC AMPLIFIERS, FIBERS

HIGHLIGHTS

- ✓ Wide range of fiber-optic amplifiers, including IO-Link
- ✓ Fiber-optic solutions for the most demanding environments
- ✓ Wide range of synthetic and glass fibers available



INDUSTRIES

Precision engineering, printed circuit board production, electronics, handling systems, vending machines, special machinery

Housing size (s _n mm)	\square 30 x 30 x 15 mm	\square 31 x 60 x 10 mm	\square 40 x 40 x 19 mm
Fiber-optic amplifier	60 / 120	200	150
Fiber-optic amplifier blue light	-	100	-
Fiber-optic amplifier IO-Link	-	200	-



Robotics



Printed circuit board production



ULTRASONIC SENSORS

RELIABLE DETECTION OF SOUND-REFLECTIVE TARGETS

HIGHLIGHTS

- ✓ Detection independent of target material, color, shape or surface
- ✓ Ready-to-use cylindrical sensors with integral connector
- ✓ Easy adjustment by either potentiometer or teach-in
- ✓ Dual output sensors, including analog and digital
- ✓ High resolution analog output, current or voltage
- ✓ Normal length or short housings and 90° sensing
- ✓ Reduced blind zone
- ✓ High excess gain – insensitive to dirt and ambient noise



INDUSTRIES

Packaging, food and pharmaceuticals

Operating principle (s _n mm)	With back-ground supp.	With analog output	Diffuse & reflex	Reflex
Miniature (M12)	30 ... 400	30 ... 400	-	-
Small (M18)	30 ... 700	50 ... 1000	50 ... 1000	0 ... 700
Compact (M30)	-	60 ... 6000	60 ... 6000	-



Packaging industry



Food industry



CAPACITIVE SENSORS

COST-EFFECTIVE WITH ANY TARGET MATERIAL

HIGHLIGHTS

- ✓ Detection of virtually all target materials
- ✓ Easy adjustment with potentiometer and LED
- ✓ Detection through non-metallic pipes and containers
- ✓ Sensors for use in harsh chemical environments
- ✓ Reliable level control of sticky and viscous materials
- ✓ Sensors with hygienic, FDA-compliant, PTFE housings



INDUSTRIES

Plastics, food and pharmaceuticals, agriculture

Housing size (s _n mm)	M12	M18	M30	Ø 26 mm/ G1	48.5 x 32 x 17 mm	120 x 80 x 30 mm
Basic	2	5 ... 8	10 ... 15	-	15	40
High performance	2 ... 4	5 ... 8	10 ... 15	5	-	-



Packaging and beverage



Food industry



SAFETY

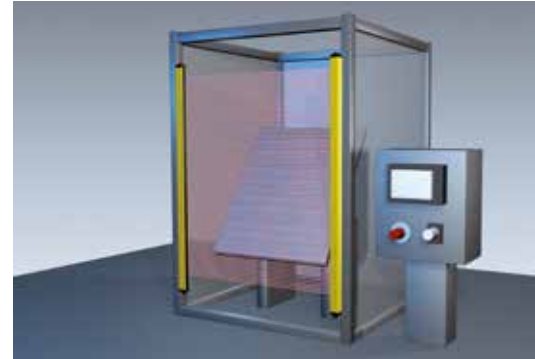
EXCELLENT PRICE/PERFORMANCE RATIO

HIGHLIGHTS

- ✓ Light-curtains for hand and finger protection
- ✓ Access control barriers with 3 or more beams
- ✓ IP 69K version available
- ✓ Performance Level PL e, according to EN ISO 13849-1
- ✓ Type 4 according to EN IEC 61496-1/2
- ✓ Automatic and manual restart mode, muting and stepping operation*
- ✓ Device and mirror columns
- ✓ High quality at attractive prices



Hand protection devices on a bending machine for automotive industry



INDUSTRIES

Automotive manufacturing, machine tools, logistics, textiles, green energy, packaging, filling machines

Resolution / beam gap	14 mm	30 mm	300 mm	400 mm	500 mm
Suitable for	finger protection	hand protection	access control	access control	access control
Available protective heights	142 ... 1690 mm	279 ... 1827 mm	932 ... 1532 mm	832 ... 1232 mm	1032 mm
Number of beams	17 ... 209	17 ... 113	4 ... 6	3 ... 4	3
Max. operating range	3.5 m	12 m	50 m	50 m	50 m
Automatic restart mode	✓*	✓*	✓*	✓*	✓*
Manual restart mode	✓*	✓*	✓*	✓*	✓*
Muting operation	✓*	✓*	✓*	✓*	✓*
Stepping operation	✓*	✓*	✓*	✓*	✓*
Category 4, type 4, PL "e"	✓	✓	✓	✓	✓
TÜV certification	✓	✓	✓	✓	✓
UL/cUL certification	✓	✓			

*in combination with suitable Contrinex Safety Relay



TOTAL TRACKING - HIGH AND LOW FREQUENCY SOLUTIONS

HIGHLIGHTS

LF TECHNOLOGY FOR DIFFICULT OPERATING CONDITIONS

- ✓ Low frequency technology
- ✓ Mechanically and chemically resistant all-metal tags and read/write modules
- ✓ Tags embeddable in metal
- ✓ For operating temperatures up to +125°C (+257°F)

HF TECHNOLOGY (13.56 MHZ)

- ✓ ISO 15693 compliant
- ✓ Networking of up to 253 read/write modules
- ✓ Net management via USB possible
- ✓ Handheld read/write devices
- ✓ Embeddable tags (even in metal)
- ✓ High temperature resistant tags up to +250°C (+482°F)



INDUSTRIES

Automotive manufacturing, machine tools, logistics, textiles, green energy, packaging, filling machines



		Tags	Read/write modules	Interfaces
Low frequency	Plastic	✓		
	Metallic	✓		
	Plastic head		✓	
	Metallic head		✓	
	Handheld		✓	
	RS485			✓
	PROFIBUS-DP			✓
	DeviceNet			✓
	EtherNet/IP			✓
	PROFINet IO			✓
High frequency	USB			✓
	Plastic	✓		
	Embeddable	✓		
	High temperature	✓		
	Plastic head		✓	
	Handheld		✓	
	PROFIBUS-DP			✓
	DeviceNet			✓
	EtherNet/IP			✓
	PROFINet IO			✓
LF+HF	EtherCAT			✓
	POWERLINK			✓
	TCP/IP Desktop			✓
	TCP/IP Industrial			✓
	USB			✓



Full-metal tag, LF



Low-cost synthetic tag, LF



High temperature (180°C/356°F) resistant tag, HF, embeddable in metal



Very high temperature (250°C/482°F) resistant tag, HF



ALL OVER THE WORLD

EUROPE

Austria
Belgium*
 Croatia
 Czech Republic
 Denmark
 Estonia
 Finland
France*
Germany*
Great Britain*
 Greece
 Hungary
 Ireland
Italy*
 Luxembourg
 Netherlands
 Norway
 Poland
Portugal*
 Romania
 Russian Federation
 Slovakia
 Slovenia

Spain
 Sweden
Switzerland*
 Turkey

AFRICA

Morocco
 South Africa

THE AMERICAS

Argentina
Brazil*
 Canada
 Chile
 Colombia
Mexico*
United States*
 Venezuela

ASIA

China*
India*
 Indonesia

Japan*
 Korea
 Malaysia
 Pakistan
 Philippines
Singapore*
 Taiwan
 Thailand
 Vietnam

AUSTRALASIA

Australia
 New Zealand

MIDDLE EAST

Israel
 United Arab Emirates

* Contrinex subsidiary

Terms of delivery and right to change design reserved.

HEADQUARTERS

CONTRINEX AG Industrial Electronics
 route André Piller 50 - PO Box - CH 1762 Givisiez - Switzerland
Tel: +41 26 460 46 46 - **Fax:** +41 26 460 46 40
Internet: www.contrinex.com - **E-mail:** info@contrinex.com



www.contrinex.com

