



# Madhav

— ENGINEERING —



All Type Limit Switch, Radio Remote, Push Button, Brake (AC-DC),  
Wire Rope Cable Trolley, DSL Busbar System, C-Rail System,  
T-track Trolley All Types of Electrical & Mechanical  
Material Of EOT Crane & Service

## CRANE

All type crane electrical accessories & panel components trading

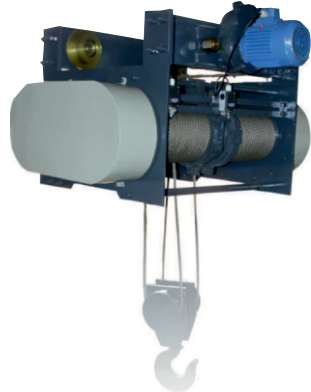
Single Girder EOT Cranes | Double Girder EOT Cranes | Heavy Duty EOT Cranes with Main & Auxiliary Hoists  
Jib Crane | Gantry Cranes End Carriage | Crab | Gears | Rope Drum | Rope Guide



## ELECTRIC WIRE ROPE HOIST TRADING

## END CARRIAGE

» Available Range : 500kg to 10 ton



Open Reduction Type



L-Block Type

## CRANE LIMIT SWITCH



### ROTARY GEARED LIMIT SWITCHES (GRLS)

Rotary geared type limit switches are used on control circuit of reversing drivers so as to limit their rotation / movement with a pre-determined position. Suitable for use on reversing drives, such as Hoists, Winches, Rolling Mills, various other mechanisms used in steel plants such as cock oven, Feeding machinery, etc.

» Aluminium Body

### WEIGHT OPERATED LIMIT SWITCH (CWLS)

Weight Operated Limit Switches (Counter Weight or Gravity) are used for Heavy duty E.O.T. Cranes, Hoists to prevent over travel of hoisting motion on power and control circuit up to 500V a.c. and 40 Amps. continuous current. When the Snatch Block of the crane reaches its top position the snatch block pushes a plate which is hanging from one end of the Lever of the Limit Switch. Due to the weight placed on the other end of the lever this lever is pushed up and shaft this lever is connected rotates there by rotating the cams which eventually open the contacts and

» Aluminium Body (10 & 40 Amps.)

### LEVER TYPE LIMIT SWITCH (LLS)

Lever Limit Switches are used for Heavy duty E.O.T. Cranes, Hoists to prevent over Travel of hoisting motion on power and control circuit up to 500V and 40Amps. Continuous current. The Limit switch normally remains closed and cuts off power to stop the motor of the crane. The Lever limit switch operates when it reaches predetermined position when the lever is moved over a projecting member fixed on the girder.

» Aluminium Body (10 & 40 Amps.)

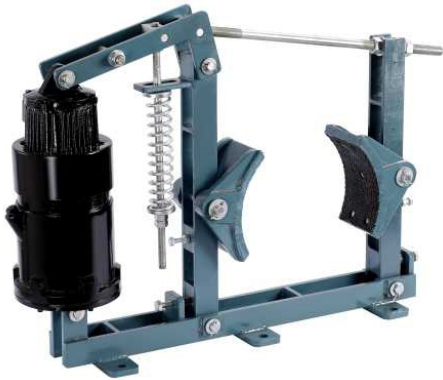
### WORM DRIVE LIMIT SWITCHES (FG)

The new range of limit switches FG has been designed & manufactured according to safety standard are suitable for use on reversing drives. The driving motion is transmitted by worm gear. All gears and hubs are made of low wear thermoplastic. The rotational movements are transmitted to switches by adjustable cams each lever has a single micro metric register screw. This screw exclusively works on its own combined lever, excluding any mechanical.

# CRANE BRAKES

## THRUSTER OPERATED BRAKES

Thruster brakes are suitable for 400/440volts, 3 Phase, 50C/s, A.C. Supply.  
Brake Drum Diameter-100-400mm.  
Braking torque-6Kg. M.-190 Kg.M.  
Easy installation & maintenance  
Reverse action version available  
Self adjusting lining wear mechanism  
Hydraulic actuator.



18 kg

34 kg

46 kg

## AC SOLENOID BRAKE

AC Solenoid Brake that are suitable for AC Supply up to 400 to 440 volts, and are available for a wide range of drum sizes from 100mm to 250mm Dia. we stand in the midst of prominent electromagnetic brakes suppliers based in India. Since these brakes are in normally closed position, the release of the brake shoes is affected by energizing the electro magnetic coil, which overcomes the spring force and the shoes are moved clear off the drum lever arm linkage system so that the drum is free to rotate without any friction.

These brakes are specially designed

- » To work trouble free & Easy installation
- » To absorb shocks and with stands class'F' insulation
- » To operate in low spring pressure to make long life of friction liner shoes.

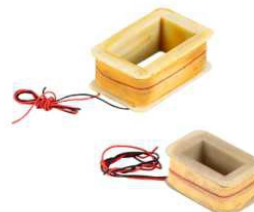


## ELECTRO MAGNETIC DISC BRAKE

Electro Magnetic Disc Brake Offered by us has a high class insulation coil, a good quality liner plate and a thick liner. when electric supply is given, the brake is released and the shaft free to rotate in case of power failure or cut off, the brake is instantaneously applied . Brake motor is combination of three phase squirrel cage induction motor with failsafe Brake when power is switched off with ordinary motor, the rotating part will stopped after some time but if brake motor is used rotating mass will stop instantaneously. all brakes are mounted at non-driving end of motor, braking disc is mounted directly on motor shaft. liner plate is only wearing part and this is easily replaceable



## CRANE BRAKE PARTS

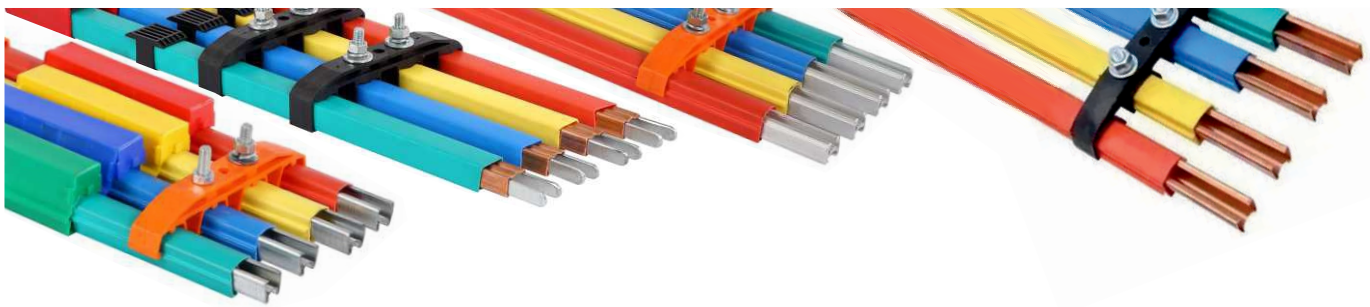
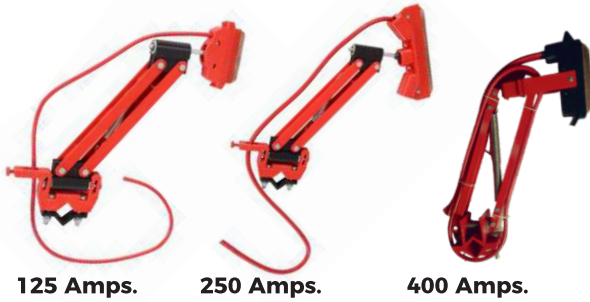


# DSL/FESTOON

## SHROUDED BUSBAR(DSL) SYSTEM

Conductor bars are used for power transmission. Conductor bars provide a safe & economical supply of electric power for track-guided mobile machinery. Single pole individually insulated conductors, ideally used for EOT Cranes etc. 100-1200 Amps. ratings.

- » Touch proof, no exposed live part Quick & easy installation.
- » Bolted joint Suitable for indoor/outdoor installation
- » 1 pole / 4 Pole Hanger No Expansion Joints up to 150 meters
- » Insulating cover shaped to shed from water & dust
- » Track Configuration: Straight or Curved 60 to 400 Amps.
- » Conductor in same standard & GI, Aluminum and Copper Material.



## C-RAIL FESTOON SYSTEM

Festoon System are used to electrify various types of mobile equipment. They can be designed not only to support and protect flat and round electrical cables, but air and water hoses as well. Festoon systems are typically used on overhead cranes, port cranes, refuse cranes and other material handling applications. We also have a solution for extremely corrosive environments. Our product range includes non-rusting, acid-proof, and seawater-resistant festoon cable systems, as well as accessories for the various cable management systems.

- » 30x32
- » 40x40



# CONTROL EQUIPMENTS

## ANTI CRANE COLLISION SWITCH



Anti Crane Collision switch for two over head cranes on the same rail. These units are installed on two cranes on the same rail approaching each other. with these units, the two cranes on the same rail will never collide with each other & thus the damage caused due to collision can be saved. the minimum distance in between two cranes will always be maintained, and the cranes will be able to move away from each other but not closer.

- » Supply Voltage : 110 V AC or 220 V AC (User Selectable)
- » Laser Alignment tool : Provided for Alignment of sensor and reflector
- » Output : Potential Free Relay Contacts
- » Contacts Rating : 5 Amps (max.) at 220 V AC
- » Output connections : Through Terminal Strip
- » Range Adjustment : 0 to 10 Mtrs.
- » housing : Metal/PVC Housing

## CABLE TROLLEY

- » Suitable For Beam Size from 40mm to 150mm



## CABLE CARRIER

- » Suitable For Wire Rope Size from 3mm to 15mm
- » Plastic Body & Metal Body Both Available



## PANEL ACCESSORIES



# POWER TOOLS

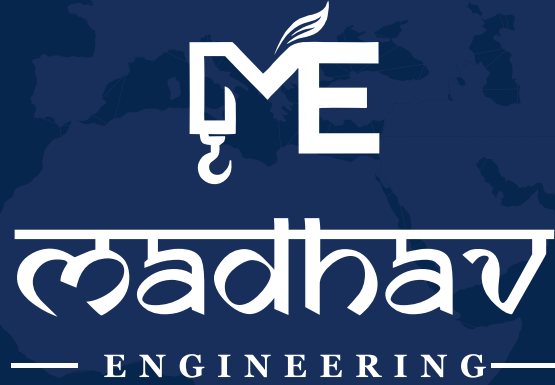
## PENDANT PUSH BUTTON STATION



## WIRELESS RADIO REMOTE CONTROL


- » Available Range : From 2 Buttons to 14 Buttons
- » Range of each Remote up to 100 meters





 **+91 79849 94632**

 **madhavengineering28@gmail.com**

 **F/169, Krish Industrial Park, Vatva GIDC, Nr. Ratan Farm,  
Phase IV, Hathijan, Ahmedabad, Gujarat-382445.**