



MKPA-MC

交流滤波电容



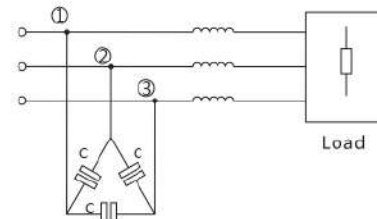
应用 / Application

- 广泛应用于电力电子设备中作交流滤波用;
- 在大功率UPS, 开关电源, 变频器等设备中作交流滤波, 治理谐波及提高功率因数。
- Widely used in power electronic equipment used for the AC filter;
- In the high-power UPS, switching power supply, inverter and other equipment for the AC filter, harmonics and improve power factor control.

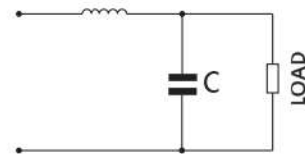
产品特点 / Introduction

- 铝外壳封装, 高温高导填充料注塑;
- 铜螺母、铜螺杆引出, 安装简单方便, 阻燃定位盖绝缘;
- 容值高, 体积小, 耐压高, 自愈性强;
- 承受高谐波电流, 高DV/DT承受力。
- Aluminum housing package, high temperature and high conductive filler injection molding;
- Copper nut, copper screw extraction, installation is simple and convenient, flame retardant positioning cover insulation;
- High capacitance, small size, high pressure level, self healing;
- High frequency harmonic current, high DV/DT bearing capacity.

典型应用电路 / Typical Circuit

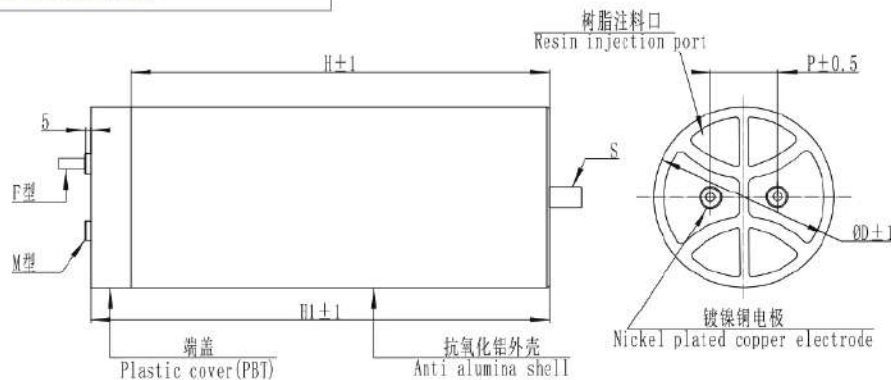


AC Filter Capacitance (C)



AC Filter Capacitance (C)

外形图 / Outline Drawing



◆ 外形尺寸 Outline dimension

Unit:mm

ΦD	76	86	86	96	116	136
P	32	32	45	45	50	50
S	M12*16	M12*16	M12*16	M12*16	M16*25	M16*25
M螺母	M6*10	M6*10	M6*10	M6*10	M6*10	M6*10
F螺杆	M8*20	M8*20	M8*20	M8*20	M8*20	M8*20

◆ 规格参数 Specification parameter



MKPA-MC

交流滤波电容

技术参数 / Technical Data

执行标准 Implemented standard	GB/T 17702、IEC61071
气候等级 Climatic category	40/85/21
额定电压 (Un) Rated Voltage	330V.AC-3000V.AC
容量范围 (Cn) Capacitance range	10 μ F~1500 μ F
容量偏差 Capacitance tolerance	$\pm 5\%$ (J)、 $\pm 10\%$ (K)
耐电压 Withstand voltage	
极间 between terminals	2.15Un(VAC)/10S
极壳 between terminals and case	2Ui+1000V.AC@50HZ60S
绝缘电阻 Insulation resistance	RixCn $\geq 10000S$ (100VDC.60S)

常用规格 / Dimension

Un=330V.AC Us=1200V													
Cn (μ F)	φ D (mm)	H (mm)	ESL (nH)	dv/dt (V/ μ S)	Ip (KA)	Is (KA)	Irms(A)	ESR (m Ω) @1KHz	Rth (K/W)	P (mm)	weight (Kg)	Part number	
80	76	80	40	80	6.4	19.2	30	4	4.2	32	0.5	AMC0806K00330*****	
120	86	80	40	70	8.4	25.2	40	2.8	3.3	32	0.7	AMC0127K00330*****	
150	96	80	45	70	10.5	31.5	50	3.5	1.7	45	0.75	AMC0157K00330*****	
230	86	130	50	60	13.8	41.4	70	2.4	1.3	32	1.1	AMC0237K00330*****	
300	96	130	50	50	15.0	45.0	75	2.8	1.0	45	1.2	AMC0307K00330*****	
420	116	130	60	50	21.0	63.0	80	1.9	1.2	50	1.6	AMC0427K00330*****	
Un=450V.AC Us=1520V													
Cn (μ F)	φ D (mm)	H (mm)	ESL (nH)	dv/dt (V/ μ S)	Ip (KA)	Is (KA)	Irms(A)	ESR (m Ω) @1KHz	Rth (K/W)	P (mm)	weight (Kg)	Part number	
50	76	80	40	90	4.5	13.5	30	4	4.2	32	0.5	AMC0506K00450*****	
65	86	80	50	80	5.2	15.6	40	2.8	3.3	32	0.7	AMC0656K00450*****	
80	96	80	45	80	6.4	19.2	50	3.5	1.7	45	0.75	AMC0806K00450*****	
100	76	130	50	70	7.0	21.0	60	3.2	1.3	32	0.75	AMC0107K00450*****	
160	96	130	50	50	8.0	24.0	75	2.8	1.0	45	1.2	AMC0167K00450*****	
250	116	130	60	50	12.5	37.5	80	1.9	1.2	50	1.6	AMC0257K00450*****	
Un=690V.AC Us=2100V													
Cn (μ F)	φ D (mm)	H (mm)	ESL (nH)	dv/dt (V/ μ S)	Ip (KA)	Is (KA)	Irms(A)	ESR (m Ω) @1KHz	Rth (K/W)	P (mm)	weight (Kg)	Part number	
40	76	130	50	100	4.0	12.0	30	2.8	6.0	32	0.75	AMC0406K00690*****	
50	76	150	45	90	4.5	13.5	35	2.4	5.1	32	0.85	AMC0506K00690*****	
60	86	130	45	80	4.8	14.4	40	2.2	4.3	32	1.1	AMC0606K00690*****	
65	86	150	50	80	5.2	15.6	45	1.8	4.1	32	1.2	AMC0656K00690*****	
75	96	130	50	80	6.0	18.0	50	1.5	4.0	45	1.2	AMC0756K00690*****	
80	96	150	55	75	6.0	18.0	60	1.2	3.5	45	1.3	AMC0806K00690*****	
120	116	150	65	50	6.0	18.0	75	0.6	4.4	50	1.8	AMC0127K00690*****	
Un=850V.AC Us=2850V													
Cn (μ F)	φ D (mm)	H (mm)	ESL (nH)	dv/dt (V/ μ S)	Ip (KA)	Is (KA)	Irms(A)	ESR (m Ω) @1KHz	Rth (K/W)	P (mm)	weight (Kg)	Part number	
25	76	130	50	110	2.8	8.3	35	1.5	8.2	32	0.75	AMC0256K00850*****	
30	76	150	60	100	3.0	9.0	40	1.2	7.8	32	0.85	AMC0306K00850*****	
32	86	130	45	100	3.2	9.6	50	1.15	5.2	32	1.1	AMC0326K00850*****	
45	86	150	50	90	4.1	12.2	50	1.05	5.7	32	1.2	AMC0456K00850*****	
40	96	130	50	90	3.6	10.8	50	1	6.0	45	1.2	AMC0406K00850*****	
60	96	150	60	85	5.1	15.3	60	0.9	4.6	45	1.3	AMC0606K00850*****	
60	116	130	60	80	4.8	14.4	65	0.85	4.2	50	1.6	AMC0606K00850*****	
90	116	150	65	75	6.8	20.3	75	0.8	3.3	50	1.8	AMC0906K00850*****	



MKPA-MC

交流滤波电容



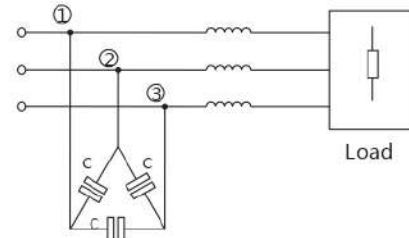
应用 / Application

- 广泛应用于电力电子设备中作交流滤波用;
- 在大功率UPS, 开关电源, 变频器等设备中作交流滤波, 治理谐波及提高功率因数。
- Widely used in power electronic equipment used for the AC filter;
- In the high-power UPS, switching power supply, inverter and other equipment for the AC filter, harmonics and improve power factor control.

产品特点 / Introduction

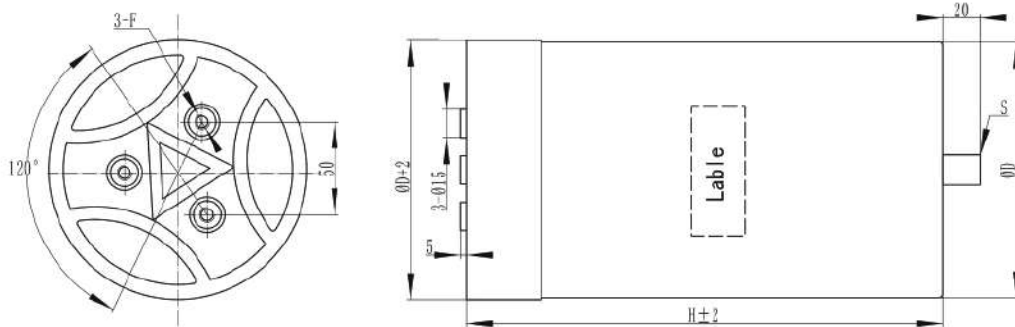
- 铝外壳封装, 高温高导填充料注塑;
- 铜螺母、铜螺杆引出, 安装简单方便, 阻燃定位盖绝缘;
- 容值高, 体积小, 耐压高, 自愈性强;
- 承受高谐波电流, 高DV/DT承受力。
- Aluminum housing package, high temperature and high conductive filler injection molding;
- Copper nut, copper screw extraction, installation is simple and convenient, flame retardant positioning cover insulation;
- High capacitance, small size, high pressure level, self healing;
- High frequency harmonic current, high DV/DT bearing capacity.

典型应用电路 / Typical Circuit



AC Filter Capacitance(C)

外形图 / Outline Drawing



外形类型描述 Type description

ΦD(mm)	P(mm)	S(mm)	F(mm)	
116	50	M16*25	M6*10	M8*20
136	50	M16*25	M6*10	M8*20
			螺母	螺杆



MKPA-MC

交流滤波电容

技术参数 / Technical Data

执行标准 Implemented standard	GB/T 17702、IEC61071
气候等级 Climatic category	40/85/21
额定电压 (Un) Rated Voltage	400V.AC~850V.AC
容量范围 (Cn) Capacitance range	3*10 μ F~3*300 μ F
容量偏差 Capacitance tolerance	$\pm 5\%$ (J)、 $\pm 10\%$ (K)
耐电压 Withstand voltage	
极间 between terminals	2.15Un(VAC)/10S
极壳 between terminals and case	2Ui+1000V.AC@50HZ60S
绝缘电阻 Insulation resistance	RixCn $\geq 10000S$ (100VDC.60S)

常用规格 / Dimension

Un=450V.AC Us=1350V													
Cn (μ F)	φ D (mm)	H (mm)	ESL (nH)	dv/dt (V/ μ S)	I _p (KA)	I _s (KA)	I _{rms} (A)	ESR (m Ω) @1KHz	R _{th} (K/W)	P (mm)	weight (Kg)	Part number	
3*110	116	130	100	60	6.6	19.8	3 \times 50	3 \times 0.78	4.5	43.5	1.6	AMC0117K00450*****	
3*145	116	180	110	50	7.3	21.8	3 \times 60	3 \times 0.72	3.8	43.5	2.4	AMC1457K00450*****	
3*175	116	210	120	50	8.8	26.3	3 \times 75	3 \times 0.67	3.5	43.5	2.7	AMC1757K00450*****	
3*200	136	230	125	40	8.0	24.0	3 \times 85	3 \times 0.6	2.1	52	4.2	AMC0207K00450*****	
Un=500V.AC Us=1520V													
Cn (μ F)	φ D (mm)	H (mm)	ESL (nH)	dv/dt (V/ μ S)	I _p (KA)	I _s (KA)	I _{rms} (A)	ESR (m Ω) @1KHz	R _{th} (K/W)	P (mm)	weight (Kg)	Part number	
3*100	116	180	100	80	8.0	24.0	3 \times 45	3 \times 0.78	4.5	43.5	2.6	AMC0107K00500*****	
3*120	116	230	120	70	8.4	25.2	3 \times 50	3 \times 0.72	3.8	43.5	3	AMC0127K00500*****	
3*125	136	180	110	40	5.0	15.0	3 \times 70	3 \times 0.67	3.5	52	3.2	AMC1257K00500*****	
3*135	136	230	130	50	6.8	20.3	3 \times 80	3 \times 0.6	2.1	52	4.2	AMC1357K00500*****	
Un=690V.AC Us=2100V													
Cn (μ F)	φ D (mm)	H (mm)	ESL (nH)	dv/dt (V/ μ S)	I _p (KA)	I _s (KA)	I _{rms} (A)	ESR (m Ω) @1KHz	R _{th} (K/W)	P (mm)	weight (Kg)	Part number	
3*49	116	230	120	70	3.4	10.3	3 \times 56	3 \times 0.55	2.1	43.5	3	AMC0496K00690*****	
3*55.7	136	230	130	90	5.0	15.0	3 \times 56	3 \times 0.4	2.1	52	4.2	AMC5576K00690*****	
Un=850V.AC Us=2580V													
Cn (μ F)	φ D (mm)	H (mm)	ESL (nH)	dv/dt (V/ μ S)	I _p (KA)	I _s (KA)	I _{rms} (A)	ESR (m Ω) @1KHz	R _{th} (K/W)	P (mm)	weight (Kg)	Part number	
3*41.5	116	230	120	80	3.0	9.0	3 \times 56	3 \times 0.55	2.1	43.5	3	AMC4156K00850*****	
3*55.7	136	230	130	50	0.4	1.2	3 \times 104	3 \times 0.45	1.8	52	4.2	AMC5576K00850*****	