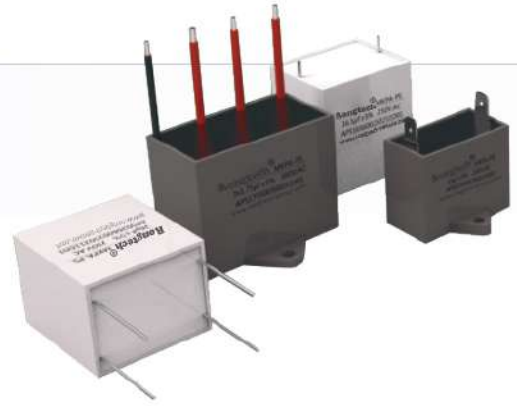




MKPA-PS

交流滤波电容



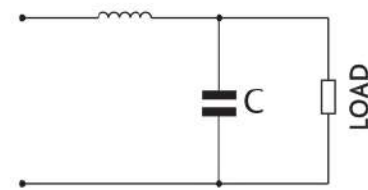
应用 / Application

- 广泛应用于电力电子设备中作交流滤波用；
- Widely used in power electronic equipment used for the AC filler;

产品特点 / Introduction

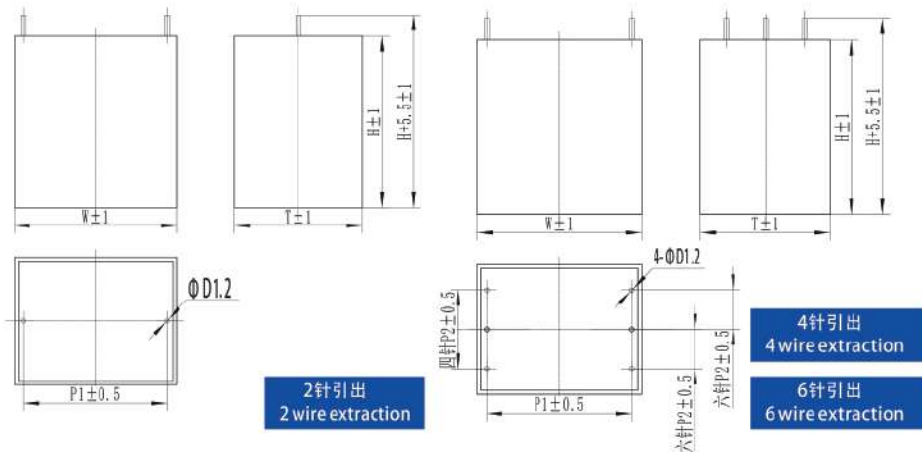
- 塑料方壳封装，阻燃环氧树脂注塑；
- 体积小，引出安装简单方便；
- 无感式结构，ESL低、ESR小，温升低，寿命长等特点；
- 承受高谐波电流，高DV/DT承受能力。
- Plastic package, flame retardant epoxy resin injection molding;
- Small size, lead to easy installation;
- Non inductive structure, ESL low, ESR small, low temperature rise, long life and so on;
- High frequency harmonic current, high DV/DT bearing capacity.

典型应用电路 / Typical Circuit



AC Filter Capacitance (C)

外形图 / Outline Drawing



W(mm)	P1(mm)	P2(mm)	
		4wire	6wire
42.5	37.5	20.3	10.2
57.5	52.5	20.3	10.2

技术参数 / Technical Data

执行标准 Implemented standard	GB/T 17702、IEC61071
工作温度范围 Operating temperature range	-40°C~85°C
额定电压 (Un) Rated Voltage	200V.AC~450V.AC
容量范围 (Cn) Capacitance range	1 μF~50 μF
容量偏差 Capacitance tolerance	±5% (J)、±10% (K)
耐电压 Withstand voltage	
极间 between terminals	2.15Un(VAC)/10S
极壳 between terminals and case	2*Ui+1000V.AC@50HZ
绝缘电阻 Insulation resistance	RixCn ≥ 5000S (100VDC, 60S@20°C)



MKPA-PS

交流滤波电容

常用规格 / Dimension

Undc330V.DC,Urms200V.AC;Us660V											
Cn (μ F)	W (mm)	T (mm)	H (mm)	φ d (mm)	P1 (mm)	P2 (mm)	ESR @10KHz (m Ω)	dv/dt (V/ μ S)	Ip(A)	Irms(A)	Part number
20	42.5	30	45	1.2	37.5		2.3	30	600	12	APS0206J00330*****
20	42.5	30	45	1.2	37.5	20.3	1.8	30	600	22	APS0206J00330*****
25	57.5	30	45	1.2	52.5		3.8	17	425	12	APS0256J00330*****
25	57.5	30	45	1.2	52.5	20.3	3.2	17	425	22	APS0256J00330*****
30	57.5	30	45	1.2	52.5		3.5	17	510	12	APS0306J00330*****
30	57.5	30	45	1.2	52.5	20.3	2.9	17	510	22	APS0306J00330*****
30	57.5	30	45	1.2	52.5	10.2	2.8	17	510	25	APS0306J00330*****
33	57.5	35	50	1.2	52.5		3.3	17	561	12	APS0336J00330*****
33	57.5	35	50	1.2	52.5	20.3	2.7	17	561	22	APS0336J00330*****
33	57.5	35	50	1.2	52.5	10.2	2.6	17	561	28	APS0336J00330*****
35	57.5	35	50	1.2	52.5		3.2	17	595	12	APS0356J00330*****
35	57.5	35	50	1.2	52.5	20.3	2.6	17	595	22	APS0356J00330*****
35	57.5	35	50	1.2	52.5	10.2	2.5	17	595	30	APS0356J00330*****
40	57.5	35	50	1.2	52.5		3	17	680	12	APS0406J00330*****
40	57.5	35	50	1.2	52.5	20.3	2.4	17	680	22	APS0406J00330*****
40	57.5	35	50	1.2	52.5	10.2	2.3	17	680	30	APS0406J00330*****
45	57.5	38	54	1.0	52.5		2.8	17	765	12	APS0456J00330*****
45	57.5	38	54	1.0	52.5	20.3	2.3	17	765	22	APS0456J00330*****
45	57.5	38	54	1.0	52.5	10.2	2.2	17	765	32	APS0456J00330*****
50	57.5	42.5	56	1.2	52.5		2.7	17	850	12	APS0506J00330*****
50	57.5	42.5	56	1.2	52.5	20.3	2.2	17	850	22	APS0506J00330*****
50	57.5	42.5	56	1.2	52.5	10.2	2.1	17	850	32	APS0506J00330*****
Undc 400V.DC,Urms250V.AC;Us800V											
Cn (μ F)	W (mm)	T (mm)	H (mm)	φ d (mm)	P1 (mm)	P2 (mm)	ESR @10KHz (m Ω)	dv/dt (V/ μ S)	Ip(A)	Irms(A)	Part number
10	42.5	33.5	35.5	1.2	37.5		2.6	40	400	12	APS0106J00400*****
10	42.5	33.5	35.5	1.2	37.5	20.3	2	40	400	23	APS0106J00400*****
15	42.5	30	45	1.2	37.5		2.3	40	600	28	APS0156J00400*****
15	42.5	30	45	1.2	37.5	20.3	1.8	40	600	28	APS0156J00400*****
15	42.5	30	45	1.2	37.5	10.2	1.7	40	600	28	APS0156J00400*****
18	42.5	33	45	1.2	37.5		2.2	40	720	15	APS0186J00400*****
18	42.5	33	45	1.2	37.5	20.3	1.7	40	720	15	APS0186J00400*****
18	42.5	33	45	1.2	37.5	10.2	1.6	40	720	15	APS0186J00400*****
20	57.5	30	45	1.2	52.5		3.5	20	400	25	APS0206J00400*****
20	57.5	30	45	1.2	52.5	20.3	2.9	20	400	25	APS0206J00400*****
20	57.5	30	45	1.2	52.5	10.2	2.8	20	400	25	APS0206J00400*****
25	57.5	35	50	1.2	52.5		3.4	20	500	28	APS0256J00400*****
25	57.5	35	50	1.2	52.5	20.3	2.8	20	500	28	APS0256J00400*****
25	57.5	35	50	1.2	52.5	10.2	2.7	20	500	28	APS0256J00400*****
30	57.5	38	54	1.2	52.5		3.2	20	600	25	APS0306J00400*****
30	57.5	38	54	1.2	52.5	20.3	2.7	20	600	25	APS0306J00400*****
30	57.5	38	54	1.2	52.5	10.2	2.6	20	600	25	APS0306J00400*****
Undc 600V.DC,Urms330V.AC;Us1200V											
Cn (μ F)	W (mm)	T (mm)	H (mm)	φ d (mm)	P1 (mm)	P2 (mm)	ESR @10KHz (m Ω)	dv/dt (V/ μ S)	Ip(A)	Irms(A)	Part number
5	42.5	33.5	35.5	1.2	37.5		3.1	55	275	12	APS0505J00600*****
5	42.5	33.5	35.5	1.2	37.5	20.3	2.5	55	275	20	APS0505J00600*****
6.8	42.5	30	45	1.2	37.5		2.8	55	374	12	APS0685J00600*****
6.8	42.5	30	45	1.2	37.5	20.3	2.2	55	374	22	APS0685J00600*****



MKPA-PS

交流滤波电容

常用规格 / Dimension

Undc 600V.DC,Urms330V.AC;Us1200V

Cn (μ F)	W (mm)	T (mm)	H (mm)	φ d (mm)	P1 (mm)	P2 (mm)	ESR @10KHz (m Ω)	dv/dt (V/ μ S)	Ip(A)	Irms(A)	Part number
9	42.5	30	45	1.2	37.5		2.6	55	495	12	APS0905J00600*****
9	42.5	30	45	1.2	37.5	20.3	2.2	55	495	22	APS0905J00600*****
9	42.5	30	45	1.2	37.5	10.2	1.9	55	495	28	APS0905J00600*****
10	57.5	30	45	1.2	52.5		4.2	30	300	22	APS0106J00600*****
10	57.5	30	45	1.2	52.5	20.3	3.7	30	300	25	APS0106J00600*****
15	57.5	35	50	1.2	52.5		3.6	30	450	12	APS0156J00600*****
15	57.5	35	50	1.2	52.5	20.3	2.8	30	450	20	APS0156J00600*****
15	57.5	35	50	1.2	52.5	10.2	2.7	30	450	28	APS0156J00600*****

Undc 700V.DC,Urms400V.AC;Us1400V

Cn (μ F)	W (mm)	T (mm)	H (mm)	φ d (mm)	P1 (mm)	P2 (mm)	ESR @10KHz (m Ω)	dv/dt (V/ μ S)	Ip(A)	Irms(A)	Part number
4.7	42.5	30	45	1.2	37.5		3	70	329	12	APS0475J00700*****
4.7	42.5	30	45	1.2	37.5	20.3	2.4	70	329	22	APS0475J00700*****
5	42.5	30	45	1.2	37.5		2.9	70	350	12	APS0505J00700*****
5	42.5	30	45	1.2	37.5	20.3	2.3	70	350	22	APS0505J00700*****
6	42.5	33	45	1.2	37.5		2.8	70	420	12	APS0605J00700*****
6	42.5	33	45	1.2	37.5	20.3	2.2	70	420	22	APS0605J00700*****
8	57.5	35	50	1.2	52.5		4.2	40	320	12	APS0805J00700*****
8	57.5	35	50	1.2	52.5	20.3	3.6	40	320	22	APS0805J00700*****
8	57.5	35	50	1.2	52.5	10.2	3.5	40	320	28	APS0805J00700*****
10	57.5	35	50	1.2	52.5		3.9	40	400	12	APS0106J00700*****
10	57.5	35	50	1.2	52.5	20.3	3.3	40	400	22	APS0106J00700*****
10	57.5	35	50	1.2	52.5	10.2	3.2	40	400	30	APS0106J00700*****
15	57.5	38	54	1.2	52.5		3.6	40	600	12	APS0156J00700*****
15	57.5	38	54	1.2	52.5	20.3	3.1	40	600	22	APS0156J00700*****
15	57.5	38	54	1.2	52.5	10.2	3	40	600	30	APS0156J00700*****

Undc 850V.DC,Urms450V.AC;Us1700V

Cn (μ F)	W (mm)	T (mm)	H (mm)	φ d (mm)	P1 (mm)	P2 (mm)	ESR @10KHz (m Ω)	dv/dt (V/ μ S)	Ip(A)	Irms(A)	Part number
3	42.5	30	45	1.2	37.5		2.4	110	330	12	APS0305J00850*****
3	42.5	30	45	1.2	37.5	20.3	1.8	110	330	22	APS0305J00850*****
3	42.5	30	45	1.2	37.5	10.2	1.7	110	330	25	APS0305J00850*****
3.3	42.5	30	45	1.2	37.5		2.3	110	363	12	APS0335J00850*****
3.3	42.5	30	45	1.2	37.5	20.3	1.7	110	363	22	APS0335J00850*****
3.3	42.5	30	45	1.2	37.5	10.2	1.6	110	363	28	APS0335J00850*****
4	57.5	30	45	1.2	52.5		3.1	55	220	12	APS0405J00850*****
4	57.5	30	45	1.2	52.5	20.3	2.5	55	220	22	APS0405J00850*****
4	57.5	30	45	1.2	52.5	10.2	2.4	55	220	28	APS0405J00850*****
4.7	57.5	30	45	1.2	52.5		3	55	258.5	12	APS0475J00850*****
4.7	57.5	30	45	1.2	52.5	20.3	2.4	55	258.5	22	APS0475J00850*****
4.7	57.5	30	45	1.2	52.5	10.2	2.3	55	258.5	30	APS0475J00850*****
5.6	57.5	35	50	1.2	52.5		2.9	55	308	12	APS0565J00850*****
5.6	57.5	35	50	1.2	52.5	20.3	2.2	55	308	22	APS0565J00850*****
5.6	57.5	35	50	1.2	52.5	10.2	2.2	55	308	31	APS0565J00850*****
6	57.5	35	50	1.2	37.5		2.8	55	330	12	APS0605J00850*****
6	57.5	35	50	1.2	37.5	20.5	2.1	55	330	22	APS0605J00850*****
6	57.5	35	50	1.2	37.5	10.2	2	55	330	32	APS0605J00850*****
6.8	57.5	42.5	56	1.2	37.5		2.5	55	374	12	APS0685J00850*****
6.8	57.5	42.5	56	1.2	37.5	20.3	1.9	55	374	22	APS0685J00850*****
6.8	57.5	42.5	56	1.2	37.5	10.2	1.8	55	374	32	APS0685J00850*****