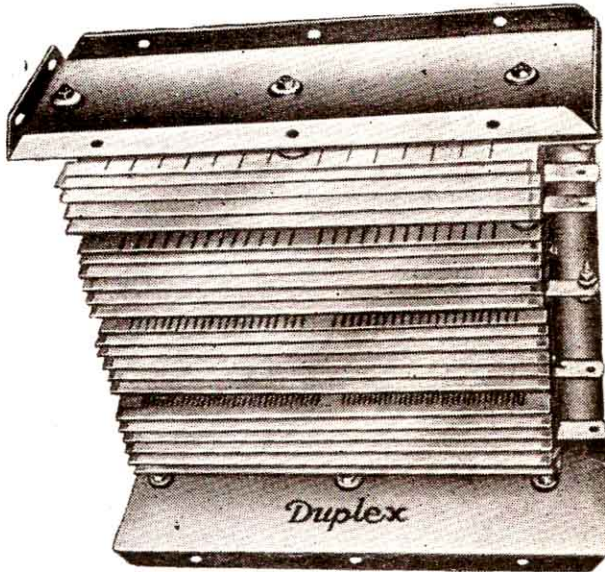
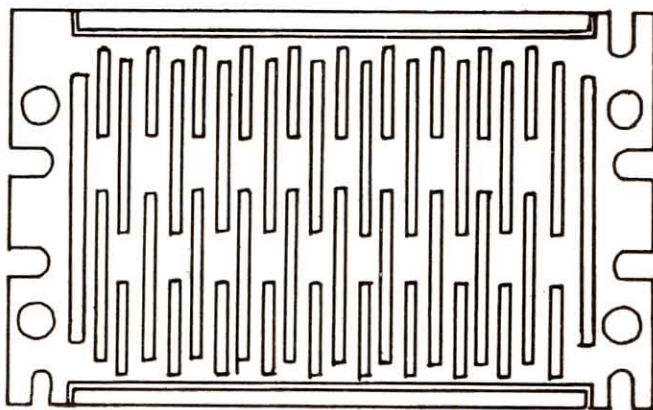


Duplex



DUPLEX PUNCHED STEEL
RESISTANCE BOX



DUPLEX PUNCHED STEEL
S. S. (GRID).

Punched Steel Resistors :

DUPLEX Punched grid resistors consist of grids punched from corrosion resisting Nickel Chromium Alloy Sheet Steel. The inherent strength of the steel itself is very high and owing to the pressed and reinforced construction the rigidity of the grid is even higher. Punched steel grids are completely immune to shock and vibration. They function reliable under the worst operating conditions and are particularly suited for steel mill duty. They are comparatively light in weight for a given rating and are compact also.

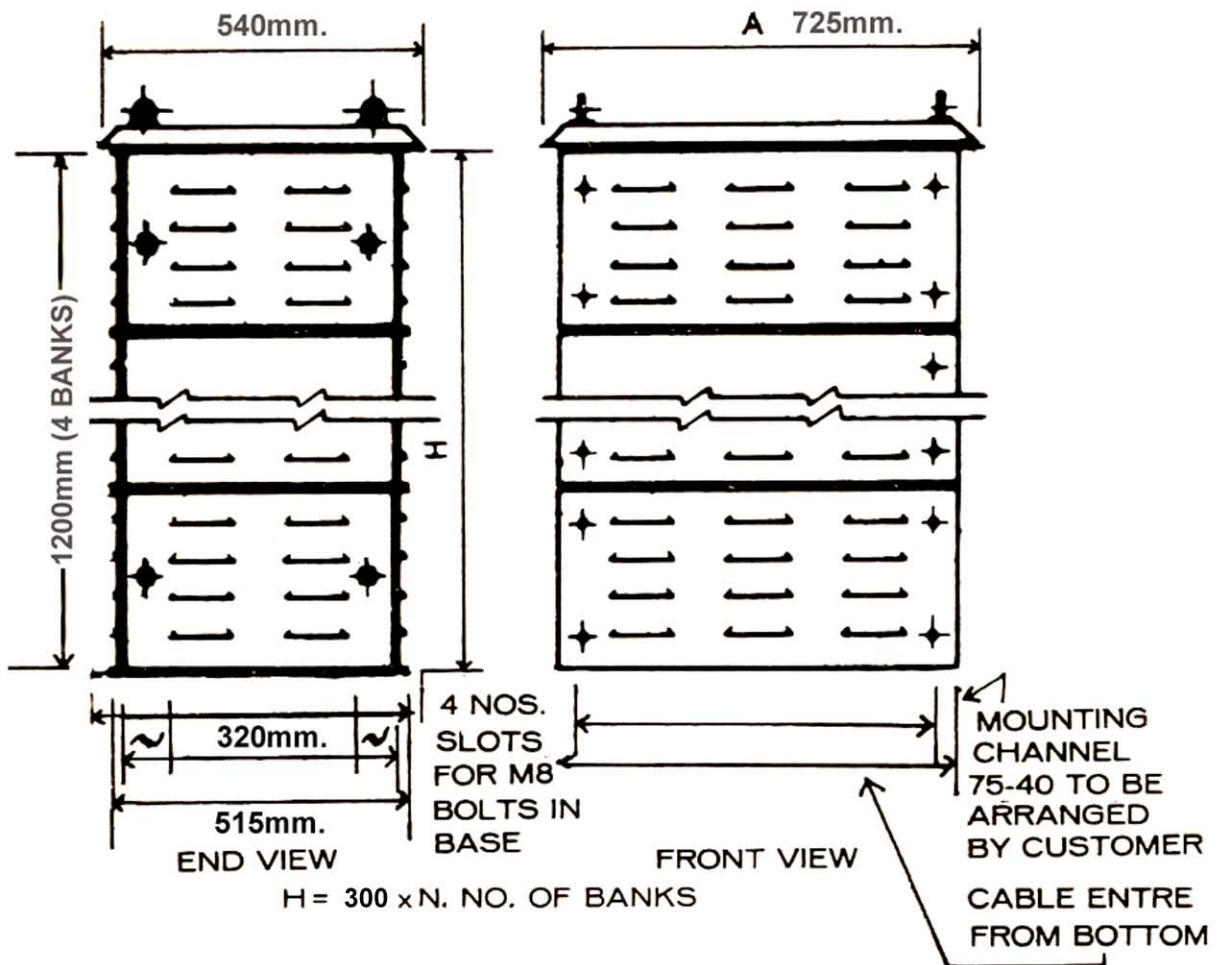
Duplex punched steel grids available in a wide range of current ratings from 19 Amps to 234 Amps continuous and the fixing dimensions and weight of various types of grids are identical, which means that different types of grids required for various steps of resistance would have identical size and mounting dimensions.

The series connection between adjacent grids is not through pressure contact via tie rod nuts but by means of suitable individual bolted connection copper jumpers. This completely eliminates any stress on the tie rod and insulators which might result in damage during cycles of heating and cooling.

When subjected to severe unforeseen overloads of moderate duration these grids may become red hot but undergo no damage whatsoever and retain their shape after overload disappears.

Duplex RESISTORS

**DIMENSIONAL DRAWING FOR S.S. PUNCHED GRID TYPE
RESISTORS WITHOUT ENCLOSURE.**



DUPLEX ENGINEERING WORKS
MFG. - E.O.T. CRANE CONTROL GEARS

228, 232 & 233 ACHARYA COMMERCIAL CENTRE, NEAR BASANT CINEMA, CHEMBUR, BOMBAY-400 074
PHONE: 551 38 56, 555 05 10