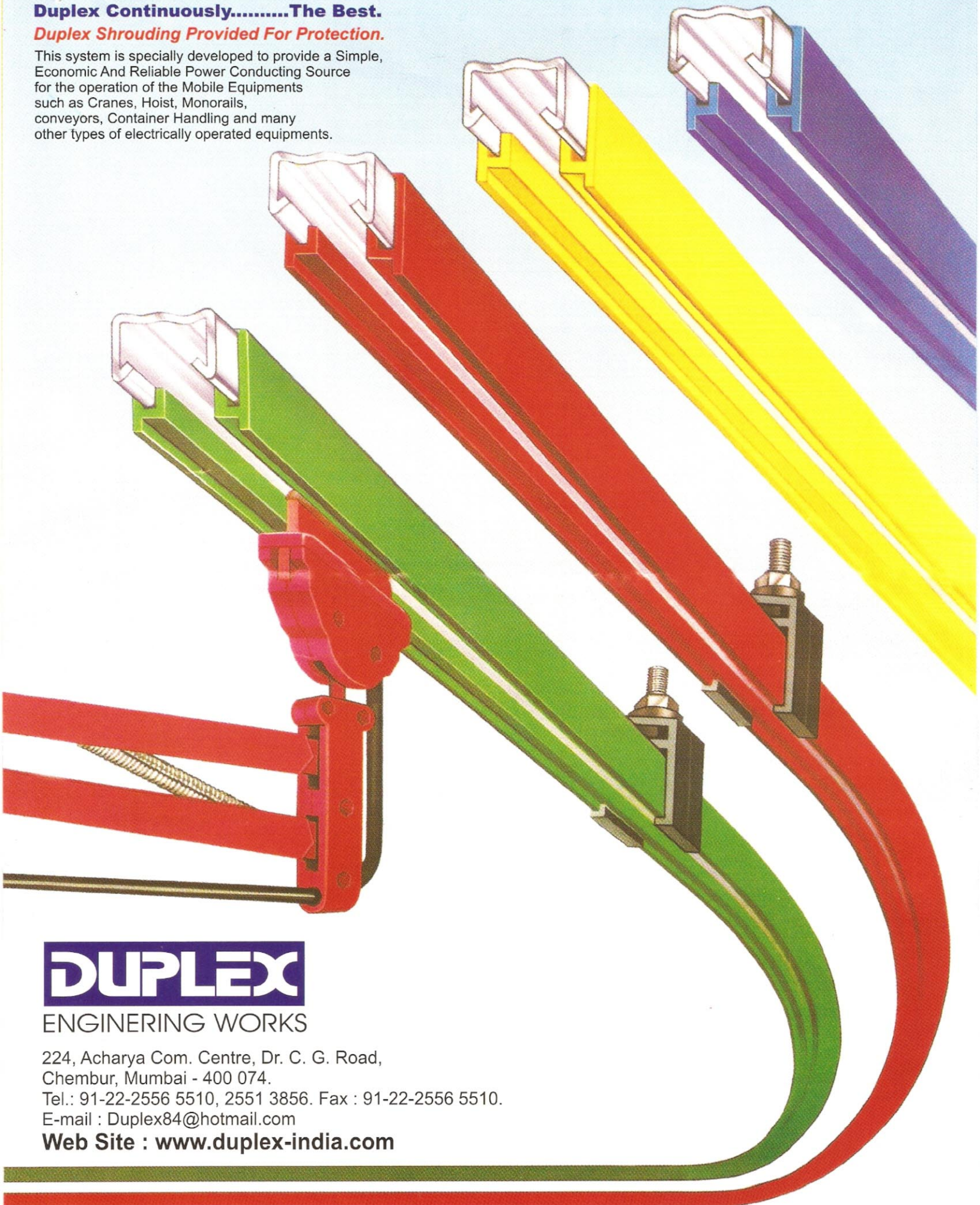


Duplex Dependable shrouded system for mobile electrification

Duplex Continuously.....The Best.

Duplex Shrouding Provided For Protection.

This system is specially developed to provide a Simple, Economic And Reliable Power Conducting Source for the operation of the Mobile Equipments such as Cranes, Hoist, Monorails, conveyors, Container Handling and many other types of electrically operated equipments.



DUPLEX

ENGINEERING WORKS

224, Acharya Com. Centre, Dr. C. G. Road,
Chembur, Mumbai - 400 074.

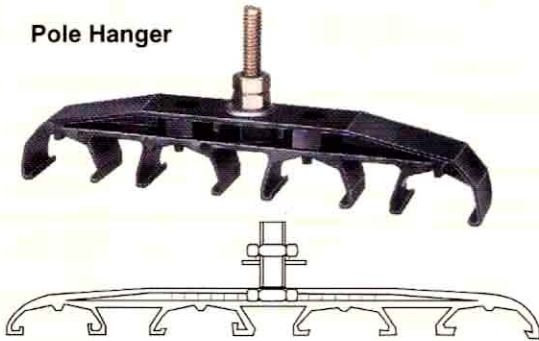
Tel.: 91-22-2556 5510, 2551 3856. Fax : 91-22-2556 5510.

E-mail : Duplex84@hotmail.com

Web Site : www.duplex-india.com



Pole Hanger



Pole Hanger



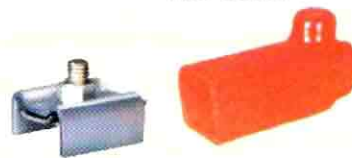
Anchor Clamp



End Powerfeed



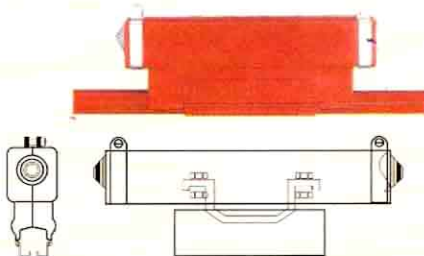
End Cover



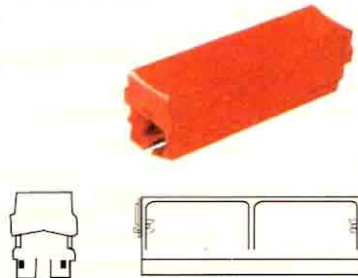
Steel Joint / Copper Joint



Power feed & Cover



Joint Cover



Web Bracket



Collector Bracket



- Insulated conductors are touch proof, no exposed live parts to contact.
- Quick and easy installation with single bolt, 4 pole hanger.
- 60 to 400 Amp Conductor in same standard
- 60,100 & 125 Amp Galvanised Steel
- 200 & 315 Amp Aluminium / Stainless Steel
- 160, 250 & 400 Amp rolled copper
- 4.5 meters Bar length
- Cover designed to shed water & dust
- Joint cover provides total protection of joints
- Enclosed wiring for connection on collectors for safe & simple installation
- No expansion joints up to 150 meters long system
- Slide in slot features for hanger supports to eliminate mis-alignment
- Track configuration : Straight or Curved

Conductor Bar	Galvanised Steel			Copper			Aluminium / Stainless Steel	
	DUP 60A	DUP 100A	DUP 125A	DUP 160A	DUP 250A	DUP 400A	DUP 200A	DUP 315A
Type	DUP 60A	DUP 100A	DUP 125A	DUP 160A	DUP 250A	DUP 400A	DUP 200A	DUP 315A
Nominal Current AT 100% & 35°C	60Amp	100Amp	125Amp	160Amp	250Amp	400Amp	200 Amps	315Amps
DC Resistance at +35°C [Ω /m]	0.003584	0.002867	0.001933	0.000342	0.000274	0.000184	0.000301	0.000261
Impedance at 43 mm spacing & +35°C [Ω /m]	0.003604	0.002891	0.001968	0.000364	0.000300	0.000221	0.000325	0.000288