

AWARENESS CAN REDUCE RISKS

Breast cancer is the malignant tumour that starts in the cells of the breast. It occurs both in men and women

In 2018, 1,62,468 new cases and 87,090 deaths were reported in India

For every 2 women newly diagnosed in the country, one dies from it

Breast cancer survival rates vary greatly worldwide, ranging

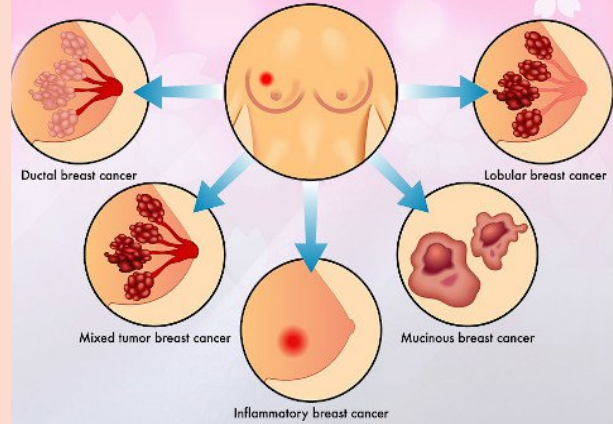


from 80% or over in North America, Sweden and Japan, to around 60% in middle-income countries and below 40% in low-income countries (Coleman et al, 2008)

The low survival rates in less developed countries can be explained mainly by the lack of early detection programmes as well as lack of adequate diagnosis and treatment facilities.

Source: World Health Organisation and Indian Council of Medical Research

Types of Breast Cancer

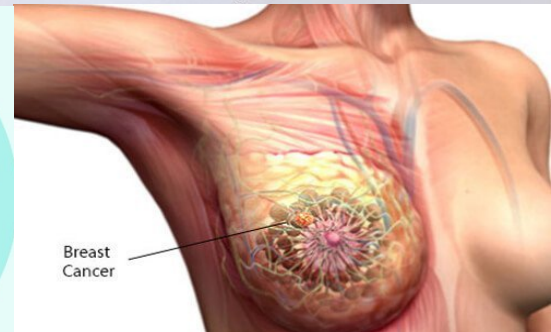
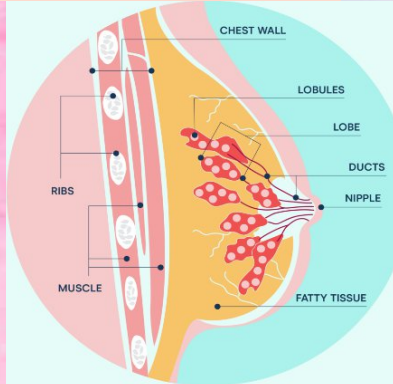


WAYS TO REDUCE YOUR BREAST CANCER RISK

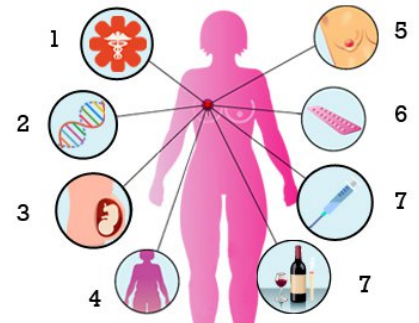
- Do not smoke
- Control your weight
- Limit or avoid alcohol
- Breast feed
- Be physically active
- Avoid exposure to radiations

 #Cancer

World Health Organization



Causes and Risk Factors of Breast Cancer



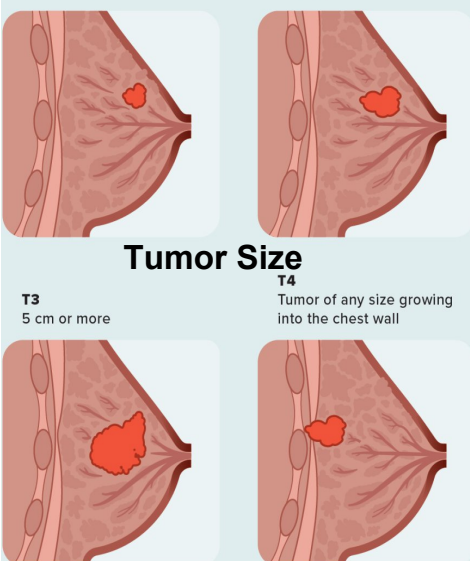
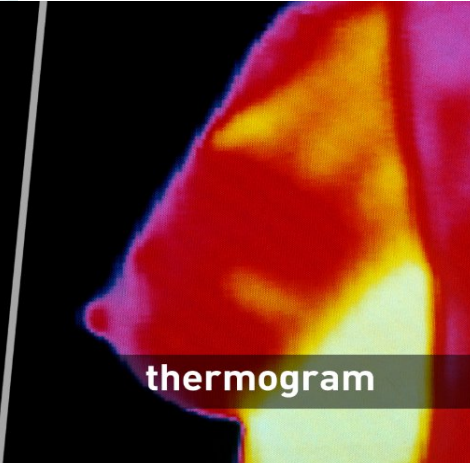
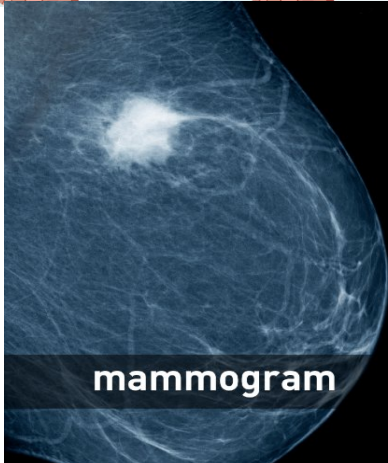
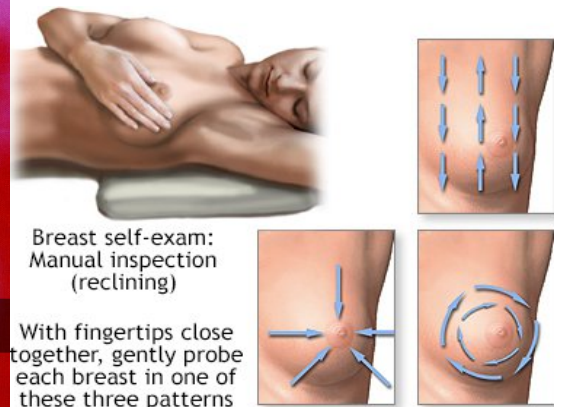
- 1- Family history
- 2- Gene mutation
- 3- Late childbearing
- 4- Early Menstruation & Late Menopause/ Obesity
- 5- Increased breast density
- 6- Prolonged use of oral contraceptives
- 7- Hormone replacement therapy after menopause
- 8- Alcohol intake/ tobacco

Signs of Breast Cancer

- Lumps
- Nipple discharge
- Dimpling
- Breast or nipple pain
- Nipple retraction or inversion
- Redness
- Changes to the skin's texture
- Lymph node changes
- Swelling

Tumor Size

- T1**
2 cm or less
- T2**
2-5 cm
- T3**
5 cm or more
- T4**
Tumor of any size growing into the chest wall

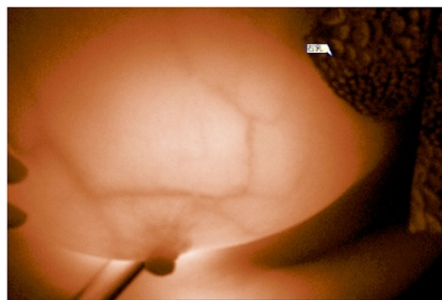




Breast self-exam:
Manual inspection (reclining)

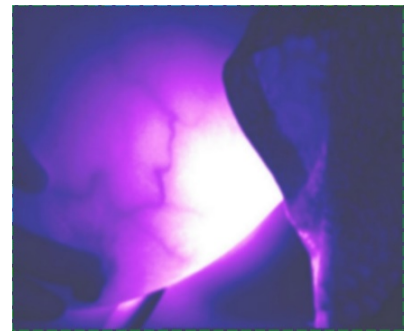
With fingertips close together, gently probe each breast in one of these three patterns

Breast Wellness Device

Model iL 8C



Normal Breast



Normal Breast with clear Blood Vessels



Breast Galactocoele



Breast Hyperplasia



Mastitis

**Newest
Generation
Wellness
Device**

A Safe Alternate to Mammography A FDA Approved Concept

Technical Specifications :

1. Gray Scale : 256 8Bit A / D
2. Video Signal Output : Amplitude 1Vp-p, impedance of 75Ω
3. Analog Signal Input : Standard television signal 1Vp-p input, 525 lines/field or 625 lines/field
4. Display Color : 8 dynamic pseudo color
5. Camera Illumination : 0.1Lux Minimum
6. Camera Resolution : ≥500TVL
7. Display : 19 inch LCD

Winning Advantages :

- **Infrared Image Managing System**, max. 24 sets of encoding forge color and dynamic filtering function.
- **Detects small number of Cancer Cells as they are highly metabolic.**
- **Excellent Tool for early Breast Cancer Detection and Breast Wellness.**
- **Economical. Analytical Software based. Harmless. No Radiation. 99% Accurate.**
- **Image Managing Functions** : Dynamic Video, Image Capture, Image Freeze, Dispose and Save.
- Dynamic Video and Cine Replay, Real Time Dynamic Video, capture the pictures Under REC or Replay.
- Dynamic encoding forge color, add forge color in full screen or in special area.
- Professional Case **History Managing System**, Patients Information can be Inputted, Checked, Stated, Transferred or Back up fast.
- Measure the perimeter and area of the focus automatically, character signs.
- Images can be saved to JPEG or BMP file format, DI COM format.
- Multi working interface of software can be selected, or be edited freely.
- Multi Reports formats can be selected, or be edited freely.
- User can amend the patients information freely. **Patients Data can be stored.**
- High Resolution and Low Intensity Infrared Digital CCD pickup Camera (Sony 1/3 CCD), **Image is clear.**
- Professional Infrared Lamp with Probe Mode, Intelligent zing adjustment and **Auto Protection.**
- Enabled **Video Editing Feature.** Any **Normal Colour Printer. Normal A4 size white Paper.**

An ISO & CE Certified Company