

A WORLD OF **CUSTOMISED SOLUTIONS** FOR THE STEEL INDUSTRY



FIDUS ACHATRÈS



ABOUT US

**A KNOWLEDGE BASED
ORGANIZATION
PROVIDING TURNKEY
SOLUTIONS TO THE
STEEL INDUSTRY.**

Located in **Mumbai**, Fidus Achatès Engineering Private Limited is a knowledge based organization offering a wide array of customized solutions for a global clientele from the steel industry. From Plant Layout Design to **Continuous Casting Machine Design**, Manufacturing, Erection and Commissioning, Fidus Achatès straddles the entire CCM technology. As a diverse end-to-end CCM technology provider, Fidus Achatès possesses the expertise for helping customers to re-engineer and re-invent their business to compete successfully in the highly demanding and ever changing marketplace. On demand, Fidus Achatès also helps its customer by providing end-to-end consultancy, right from steel making to finished products.

Leveraging on technology and a team of qualified professionals, **Fidus Achatès Engg. Pvt. Ltd.** caters to several industries. The company commenced business operations in the year **2007** with the objective to become a world class supplier of Continuous Casting Machines (Billet Casters) for both domestic and international markets. We design and develop these products with high precision considering current market demands.



**“TO DO A COMMON THING
UNCOMMONLY WELL
BRINGS SUCCESS.”**

Fidus Achatès has **world class manufacturing facilities** backed by support of experts who possess in depth knowledge of the subject. All components of the machine and equipment are from reputed brands, ideally suited for manufacturing and testing of products efficiently.

We export to various geographies like **Africa, Middle East** and the rest of **Asia**. Fidus Achatès is also an affiliate member of the Bombay Chamber of Commerce & Engineering Export Promotion Council (EEPC).

To keep pace with the growing demand for sophisticated technology and to meet the specific needs of customers, Fidus Achatès will soon be coming up with a state-of-the-art R&D wing that will start working on **Near Net Shape Casting technology**.

Fidus Achatès believes its true strength lies in the potential of its associates and **strong customer relationships**. It forms the core value system of Fidus Achatès that always keeps its focus on its goal.

**WE EXPORT PRODUCTS
TO VARIOUS
GEOGRAPHIES LIKE
AFRICA, MIDDLE EAST
AND REST OF ASIA.**

**“YOUR GOAL SHOULD BE
OUT OF REACH BUT NOT
OUT OF SIGHT.”**

Product Range

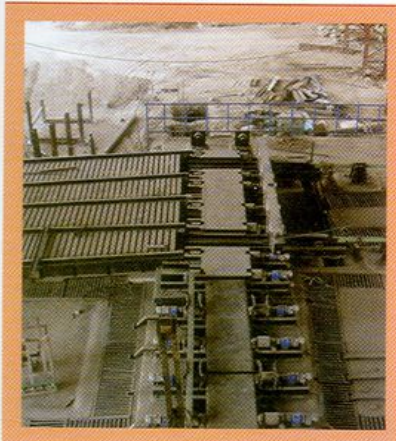
We offer **Continuous Casting Machines** based on latest technologies. Our manufactured and traded machines are well performing and have **durability**. They are easy to operate without any special training and require minimal maintenance. Understanding diversified requirements of customers, we offer machines of various types and dimensions. The types of machines available are as mentioned below:

Single or Multi Strands Continuous Casting Machine with multiple unbending system of various radii.

All the above mentioned machines come with following options:

- ▶ Ladle Turret With Lift/Lower and Load Cell
- ▶ Skid Type Cooling Bed or Turn Over Cooling Bed
- ▶ Overhead Cross Transfer or Pushing Type Cross Transfer
- ▶ Overhead Type Tundish Car with Raise/Lower facility and Load cell, or Portal Type/Semi Portal Type Tundish Car with Raise/Lower facility and Load Cell
- ▶ Primary and Secondary cooling water automation
- ▶ Torch Cutting Machine
- ▶ Electro Magnetic Stirrer
- ▶ Flexible/Rigid Dummy Bar
- ▶ With/Without Steel Structure
- ▶ With/without Auxiliary Equipment
- ▶ Auto Mould Level Control System

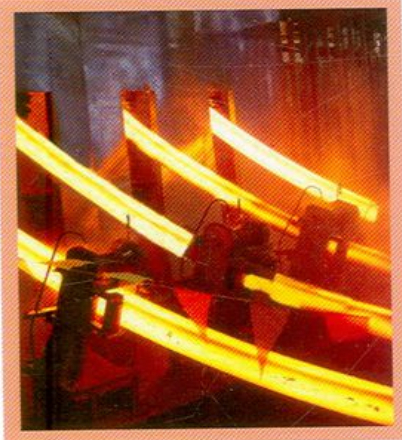
Discharge Roller Table



Discharge roller table (DRT) is provided for transporting and guiding the hot billets from cutting area upto cross transfer area. Our DRT is of unique design having dedicated drive for each common roller, complete with good heat protection over drive and bearings, resulting appreciable increase in plant availability.

PRODUCTS

Continuous Casting Machines



Billet sections cover both small and medium round sections as well as rectangular or square sections. We design and manufacture the latest continuous billet casting machines best suited for user's steelmaking capacity, billet sizes, and their field conditions. Compact and modular billet casters from Fidus Achatès feature advanced technology and special caster components. They perfectly match the steadily growing demands of today's continuous casting machines: high productivity, high production flexibility, and a high level of product quality.

Benefits of Fidus Achatès billet casting solutions

- ▶ High casting speed and Modular design
- ▶ Highest production, maintenance flexibility and quality of the cast strands

Torch Cutting Machine (TCM)



Cutting of the hot strand into billets of variable lengths is done by the torch cutting machine (TCM). The torch cutting operation can be initiated in manual mode by pressing the 'CUT START' push button on the torch cutter control desk (TCD) or in automatic mode by a signal from the length measuring system (when the length of strand, in front of the TCM, is equal to the cutting set point).

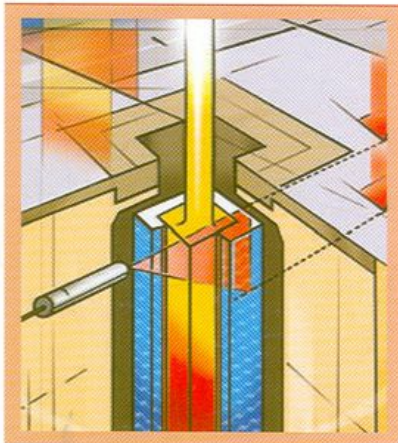
PRODUCTS

Rigid Dummy Bar

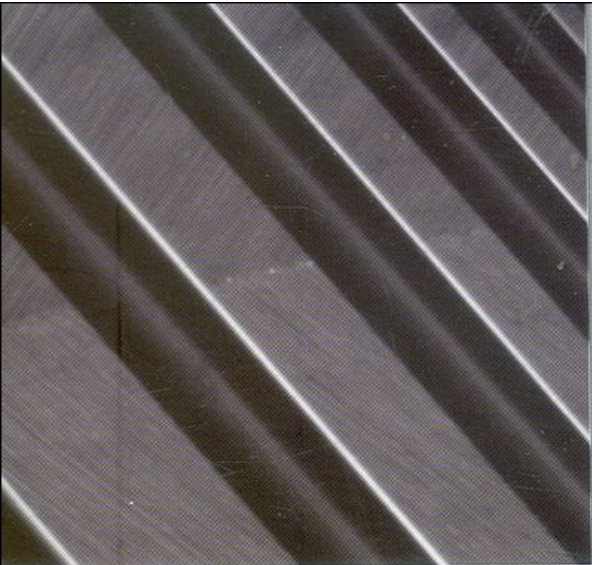


At the start of cast, the Rigid Dummy Bar head closes the mould. After start, the driven bar leads the hot strand through the cooling chamber and withdrawal & straightening unit. Rigid and sturdy construction of arc segments can be individually exchanged in case of damage. No obstacles exist (roller aprons, supports) in cooling chamber, therefore free access and perfect undisturbed spray pattern to hot strand is achieved. Restranding during casting of individual strand is possible.

Automatic Mould Level Controller (AMLC)

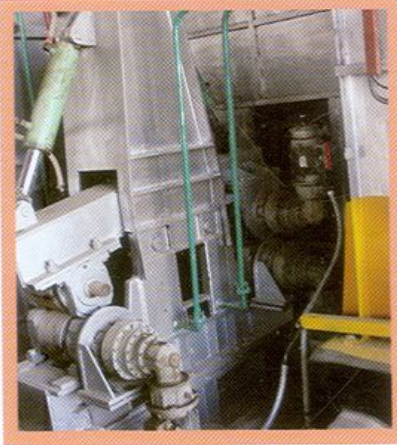


Function of the mould level measuring system is, to measure the actual steel level within the upper part of the mould and to transmit this information to the control PLC. The signals are used by the PLC to control the casting speed, in order to maintain the preset level of steel in the mould. Analysis of the mould level must be made to detect and record mould level fluctuations that can cause surface quality defects. Thus with AMLC level of the liquid metal in the mould is reasonably constant resulting in good surface quality.



**“THE ONLY LIMITS ARE,
AS ALWAYS, THOSE OF
VISION.”**

Withdrawal and Straightening unit

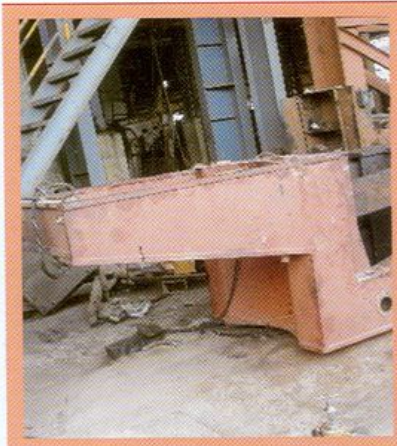


Withdrawal and Straightening unit consists of two sections: first is the withdrawal part, closer to the cooling chamber, and second is straightener part, towards the intermediate roller table. The function is to withdraw and straighten the cast strand, as well as for insertion of the dummy bar for initiation/re-stranding of the cast.

Features

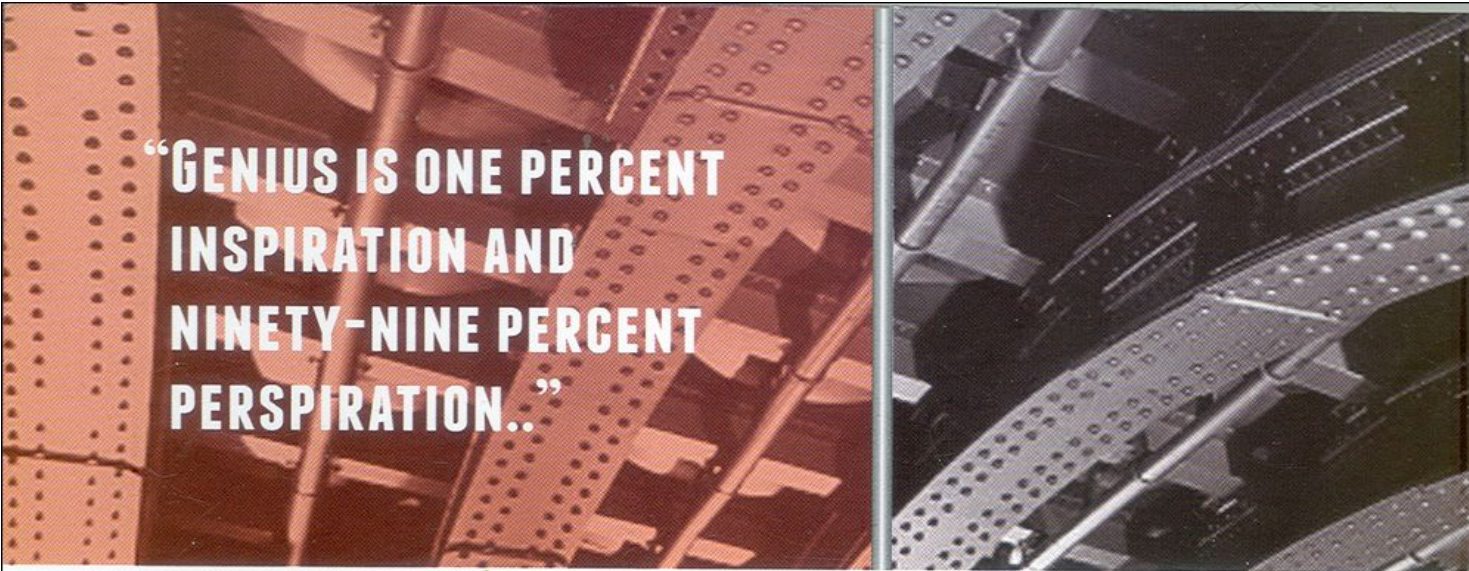
- ▶ Sturdy design for heavy duty
- ▶ Low unbending stress due to FACS system and five-roller design
- ▶ Hydraulically actuated rocker arms for jerk-free withdrawal of strand
- ▶ Cooling panels to protect the equipment against heat radiation emitted by the hot strand

Mould Oscillation System



Mould Oscillation System is a critical part of continuous casting technology. The oscillation ensures release of the solidifying strand from the mould leaving oscillation marks on the strand whose depth and width is dependent upon the oscillation parameters e.g., stroke length and frequency of oscillation.

Short stroke length and high frequency of oscillation linked with section size and casting speed is the necessity to give improved billet quality. Our oscillator is of robust design and maintenance free which can be easily set to optimum frequency of oscillation and stroke length suitable for the given section size and casting speed.



**“GENIUS IS ONE PERCENT
INSPIRATION AND
NINETY-NINE PERCENT
PERSPIRATION..”**

**OUR TRUE STRENGTH
LIES IN THE
POTENTIAL OF OUR
ASSOCIATES AND
STRONG CUSTOMER
RELATIONSHIP.**

There are several reasons why the best in the global steel business choose to work with us, **knowledge** and **innovation** topping that list. But here are some practical reasons why we are the **number one choice** when it comes to engineering in the steel industry:

Vendor base

We have a rich vendor base, comprising of world's well known and reliable suppliers. Our company procures spares and raw materials strictly from experienced vendors only. They are selected on the basis of their experience in their respective fields. Our experts also take their successful track records into consideration. Only when they are assured about their **reliability** and **capability**, orders are placed to them.

Quality Assurance

Quality is the most important factor that retains our market reputation and we don't compromise on it at all. All machines are designed, developed and assembled under the strict supervision of **industry professionals**.



WHY CHOOSE US

Our quality analysts make sure that they meet all **international quality standards**. Machines are made using highly sturdy and durable materials giving them long lasting performance.

Robust Infrastructure

Robust infrastructural setup forms the **backbone** of our company, which is based on highly sophisticated manufacturing facilities. It is installed with state-of-the-art machines and equipment that are easy to operate and have high production capacity. We keep all the machines and equipment **well maintained** and **upgraded** according to the latest trends. This enhances their performance and in-turn strengthens the manufacturing process.

Memberships

- ▶ Bombay Chamber of Commerce
- ▶ Engineering Export Promotion Council (EEPC)

**ALL OUR MACHINES
AND EQUIPMENT ARE
WELL MAINTAINED
AND UPGRADED
ACCORDING TO THE
LATEST TRENDS.**



TEAM

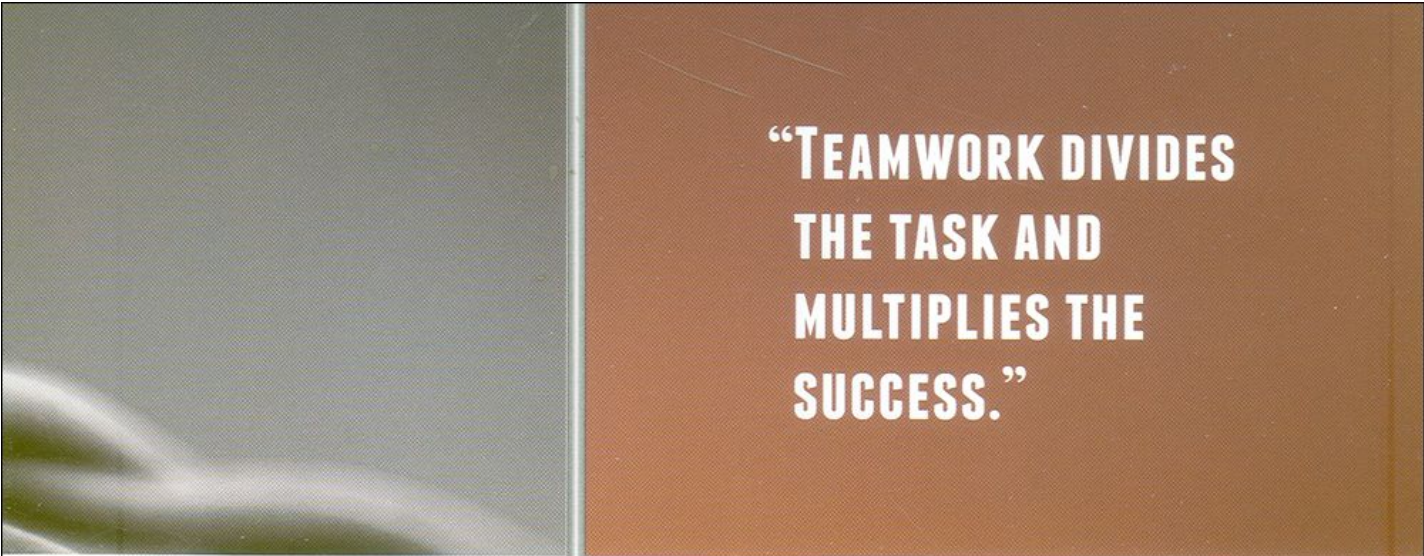
The following people are instrumental in making **Fidus Achatès** a **vibrant** and **innovative** company, always steering the ship in line with the long term vision.

Priyaranjan (Chief Executive)

Mr. Priyaranjan is the Chief Executive Officer of Fidus Achatès. He is responsible for refining its integrated delivery model to improve client satisfaction levels. He is also responsible for synergizing the processes to ensure operational and cost efficiency that will allow Fidus Achatès to better adapt to the changing market. He began his career as a software engineer and later joined IBM. There he worked at various positions and levels, developing strong skills in marketing and project management. He holds a Bachelors degree in Electrical engineering from NIT Jamshedpur.

Anil Kumar Das (Executive Director)

Mr. Anil Kumar Das is the Executive Director of Fidus Achatès. He guides the team on critical matters and liaison with various agencies. He is also spearheading in setting up mechanisms for controlling expenses and revenue losses. He has vast experience in laying the ground work of projects and setting it right before handing over to Operation Wing. He also serves as a Director of a leading Steel Tube maker of South India which also undertakes Tele Communication Infrastructure projects. He holds a Masters in Engineering degree from IIT, Kharagpur.



**“TEAMWORK DIVIDES
THE TASK AND
MULTIPLIES THE
SUCCESS.”**

Rajesh Kumar Sinha (Technical Director)

Mr. Rajesh Kumar Sinha is the Technical Director of Fidus Achatès. He has vast experience of caster technology having designed and installed several continuous casting machines for various customers. He started his career with SMS CONCAST earlier known as Concast Standard Engineering India Pvt. Ltd. There he was responsible for designing continuous casting machines of various capacities and to provide supervision for erection and commissioning. His experience of installing casters at Tata Steel, Jamshedpur and Jindal, Raigarh has been early achievement of his career. In Fidus Achatès, he is known as a great leader and tough taskmaster who efficiently handles the vendors to meet the delivery schedules effectively. He holds a Bachelors degree in Mechanical engineering from NIT Jamshedpur.

R Devnathan (Technical Advisor)

Mr. R. Devnathan is the Technical Advisor for Fidus Achatès. He brings with himself over 40 years of experience in steel making. Previously, he was a senior executive in Tata Steel where he had been a veteran Plant Engineer and Project Manager. He introduced Basic Oxygen Steel Making (BOS) process and Continuous Casting practice in Tata Steel in early eighties. He was instrumental in Modernization of Tata Steel till 2000. Currently, he provides consultancy to a long list of clients from Metallurgical, Engineering and Environment Control Industries such as JSW, Reliance Industries, Tata Steel, and GE etc. He has also distinguished himself as a scholar giving lectures in a number of Technical and Management Institutes.

Fidus Achatès

227, Dimple Arcade, Asha Nagar, Thakur
Complex, Kandivali(E), Mumbai-400101

E-Mail : enquiry@fidusachates.com

Ph. No : +91-98676-44777

Fax No : +91-22-66459151

Website : www.fidusachates.com