



SENSE MEASURE CONTROL AUTOMATE

ASTER[®]
TECHNOLOGIES

SENSE MEASURE CONTROL AUTOMATE



Established in 1996, Aster Technologies is dedicated to the manufacturing of instruments for the Water Treatment Industry. Aster has gained national recognition for its comprehensive line of products and providing solutions as per clients' needs and applications.

We revolutionized the norm of importing expensive products by offering our products to suit the Indian market perfectly. This enabled us to ensure quality with utmost efficiency.

Our strict quality control measures ensure our customers get technologically advanced products, duly calibrated and traceable to national standards.

At Aster, every customer gets full assistance and support right from the moment of inquiry, through an extensive network of distributor. Our wide dealer network ensures prompt service is just a phone call away.

Our grooving expertise has made us market leaders, preferred and promoted by those who don't want to face the constant dilemma of quality versus cost. We proudly, promise you both.

Our extensive Range of Products include:

- Microprocessor based Control Panels and Controllers for RO, UF, ETP, STP and MBR Applications
 - Microprocessor based Indicators and Controllers for pH, ORP, Conductivity, DO, Chlorine, etc.
 - On-line sensors for Flow with line sizing varying from: 20NB to 300NB
 - Digital Meters for measuring controlled output for flow
 - Variable-area Flow Meter (Rotameter) for complete flow range from min. 100 LPH to max. 50000 LPH
 - Accessories for Automation: Level Switches, Pressure Switches and Flow Switches.
 - Silt Density Index (SDI) Kits, Water Hardness Test Kit
 - Magnetic Flow Meters
 - Water Dispensers
- And a wide range of customized IoT Solutions.



CONTROLLERS FOR RO



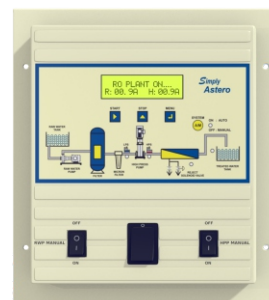
Astero Lite NXT

Features

- Vermin proof enclosure
- Complete RO logic preprogrammed
- Ideally suited for small size RO plant
- Auto / Manual facility
- Facility to bypass LPS/FLOATY/BOTH in auto mode
- Auto Flushing
- In-built TDS indicator
- Cutout is identical to our Simply Astero or NXT Panel

Features

- Complete RO logic preprogrammed
- Mimic diagram with 6 LED's for I/O indication
- 16X2 Alphanumeric LCD display
- Flushes the membrane during starting and stopping, takes care of required motor protection
- Auto/Manual facility
- Easy overload setting
- Individual switch to start/stop raw water and high pressure pump in manual mode
- Built in voltage indicator



SA 11/13/33



Astero 11/13/33/333

***Also available with GSM/GPRS modem or Bluetooth**

Features

- Flexible and programmable
- User-friendly & patented interface
- Smart alphanumeric screen
- Multicoloured back lights
- Supports Auto MPV of any make
- Optionally Available
 - *Bluetooth connectivity, Controllable with Android Device
 - *High pressure pump up to 15 HP Star-Delta
 - *Stand-by pump for Raw Water/ High Pressure Pump

NXT RM Features

- Along with all the above features, this panel comes with a GSM/GPRS modem
- Remote Monitoring
- Can view entire plant parameters from a single dashboard
- Get access to log of all faults and status changes

Features

- Complete RO operating logic programmed
- 6 Switch inputs
- 8 Potential-free outputs
- RS485 output for data transfer
- Standard RO plant interlocks
- In built:-
 - a) Conductivity/TDS indicator
 - b) Flow Meter- Dual Channel
 - c) Analog inputs for pH, ORP, Pressure



RO-Matic NG

Available with modem for:
 -Online Monitoring
 -Data Logging & Analysis

CONTROLLERS FOR WASTEWATER

Features

- Complete influent (Effluent/Sewage) treatment logic preprogrammed
- Mimic diagram with 6 LED's for I/O indication
- Automatically drains the sludge after a set period
- Takes care of required motor protection such as Overload/Single phasing/dry running
- Inbuilt flow rate indicator and operation hour counter
- our personal recovery agent with time lock
- Ideally suitable for small size plants
- Plug and Play installation
- Standby to almost all pumps with manual selection



**All pumps (1W + 1S)
(Manual changeover)***



NEW

ASTERO NXT WASTEWATER

Features

- Mimic Diagram with LED's
- User friendly interface
- Easy access to critical settings (Pump & Blower)
- Single Key Start/Stop
- Auto change over function
- Facility for spare pump
- Complete Automation for STP/ETP
- Inputs for tank levels, Pump contacts and Flow Sensors
- Control outputs for Dosing Pumps, Transfer Pumps and blowers
- Built in RS485 port
- Remote monitoring optionally available

Features

- Complete influent treatment operating logic in-built
- Automatically switches over to standby pump
- 4 line alphanumeric display with keypad for programming and setting
- Mimic diagram with 13 LED annunciator
- Inbuilt flow rate indicator and totaliser
- Inbuilt operation hour counter
- 4 switch inputs
- 4 analog inputs
- 10 potential free outputs
- Personal recovery agent with time lock
- RS485 output for online monitoring/data logging



STP-MATIC NG

**Also available for SBR*

ASTERO SCAN



NEW

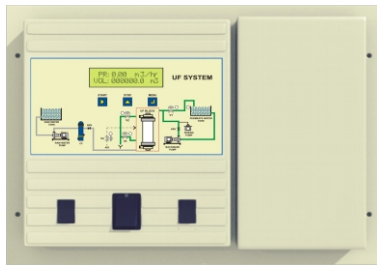
Features

- Patented algorithm to measure the parameters
- Easy access to critical settings
- Intuitive user interface
- 4 line display for multiple parameter viewing
- Provision to connect alarm
- Ready for data acquisition of existing STP/ETP
- Single unit for measuring multiple parameters like
 - BOD - COD
 - TSS - TDS
 - pH - Turbidity
- Facility to connect (via Rs485)
 - DO meter - Chlorine meter
 - Electromagnetic Flow meter

**Optionally available:*

- Remote monitoring and data logging
- Provision to upload the data on CPCB site

CONTROLLERS FOR UF



UF NG

Features

- Preprogrammed logic suitable for all types of membranes
- All step timings are settable at site
- Facility to hold/skip/stop any step
- In built switchgear for Feed & Backwash pump with motor protection
- Suitable for solenoid as well as motorized valve
- Provision for chlorine dosing during service & forward flush
- User settable frequency for CEB & Backwash cycle
- In-built facility for air scouring and drain out
- Remembers time elapsed & starts from the point where power failure happens

Features

- Suitable for any logic & all types of membrane*
- User settable upto 8 valves, 2 dosing pumps, RWP & BWP
- Can program up to 30 steps
- Can set up to 02 counters (with series or parallel operation of CEB)
- Suites all types of valves
- Settable PUMP ON & PUMP OFF delay to avoid hammering
- Remembers ongoing step and time elapsed upon power fail (if time > 5 minutes)
- Shutting off all outputs after 30 seconds if fault occurred
- Equipped to suit auto multiport valve in pretreatment
- CIP can be initiated with a single push button



UF NG+

***Optionally available:**

- RWP & BWP (1W+1S) with manual changeover OR
- Provision to connect for 1 Air Blower & CIP Pump



UF-MATIC

Features

- Suitable for any logic and for all types of UF membrane
- All timings are settable at site
- Up to 10 valves and 2 pumps programmable at site
- user settable frequency for CEB & Backwash cycle
- 6 Switch inputs
- 1 Flow input with totalizer
- Can be used even for MB/Filter/Softner Automation
- CIP cycle can be initiated with single push button
- RS485 output for online monitoring

Features

- Complete Filter/Softner logic preprogrammed
- Mimic diagram with 5 LEDs for I/O indication
- Intuitive user interface with 10 keys for easy programming
- Automatically changes over to standby pump
- Motor protection
- Auto/Semi Auto/Manual facility
- Built in flow rate indicator with totalizer
- Built in operation hour counter
- Built in time out facility
- Suit any kind of Auto Multi Port Valve

AUTOVALVE NXT



***Optionally available:**

- Remote monitoring and data logging

pH/ORP METER



pH Range: 0 to 14
Resolution: 0.01
ORP Range: -1900 to +1900 mV
Resolution: 1

Features

- Traceable to National standards
- Key buttons for easy setting
- Individual set point
- Programmable control delay
- Hysteresis to prevent chattering
- In-built diagnostics for sensor failure, wrong calibration
- In-built alarm annunciator

Advanced Options

- Automatic Temperature Compensation
- Isolated 4-20 mA Output
- RS485 for online monitoring/ data logging

Features

- Traceable to National Standards
- Auto ranging facility
- Dual unit ($\mu\text{S}/\text{cm}$ or ppm)
- Wide range up to 2 Lac ppm
- In-built alarm annunciator
- Programmable control delay
- Hysteresis to prevent chattering

Advanced Options

- Automatic Temperature Compensation
- Isolated 4-20 mA output
- RS485 for online monitoring/ data logging

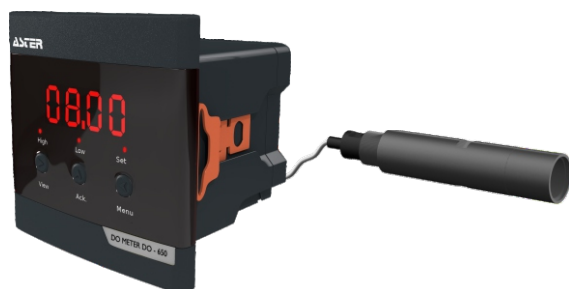
CONDUCTIVITY/TDS METER



Resolution: K=1 K=0.1 K=0.01

Range: 0.05 to 200000 $\mu\text{S}/\text{cm}$

DO METER



DO Range: 0 to 10 ppm of dissolved oxygen
Resolution: 0.1

Features

- Key buttons for easy setting
- Individual set point
- Programmable control delay
- Hysteresis to prevent chattering
- In-built alarm annunciator
- Manual/Automatic relay reset options

Advanced Options

- Isolated 4-20 mA output
- RS485 for online monitoring & data logging

Features

- Push buttons front keys
- Individual high& low set point relay
- Programmable control delay
- Hysteresis to prevent chattering
- In-built diagnostics for wrong calibration
- In-built alarm annunciators
- Manual/Automatic relay reset option

Advanced Options

- Isolated 4-20 mA output
- RS485 for online monitoring & data logging

CHLORINE METER



Range: 0.00 to 04.00 ppm
Resolution: 0.01

TURBIDITY METER



TB-650

Range: 0 to 2000 NTU
Resolution: 1

Features

- Displays turbidity upto 2000 NTU
- SS316 Heavy Duty Digital Sensor
- Low-scale circulating, built-in bubble eliminating system
- In-built alarm annunciator
- Hysteresis & Control delay
- Optional RS485 enabled for Real Time Monitoring

Features

- Intuitive and easy to use
- Suitable for data acquisition from up to 32 different instruments through RS485
- Stores data on in built 8GB memory card
- User settable frequency for data logging(001 to 999 mins)
- In-built single channel flow meter
- 2-line alphanumeric display scrolls and shows readings of connected devices

DATA LOGGER



DL-650

UNIVERSAL TRANSMITTER



UT-650

Features

- Displays parameter values like pH/ORP/ Conductivity/TDS/Pressure/Level/Temperature/ Flow/DO with Two relay output & 4-20 mA input
- Suitable for 2/3/4 wire field transmitter
- In-built 12V D.C. supply source
- Resolution settable from 0.001 to 1
- In-built alarm annunciator
- Hysteresis & Control delay

Advanced Options

- RS485 or 4-20 mA output

Features

- For pH/ORP
- Traceability to National standards
- Key buttons for easy setting
- 3 wire design with input to output isolation gives clear and crisp uninterrupted signal transmission
- Inbuilt current simulator for easy synchronising with panel indicator or PLC
- Calibration using multi turn trimpot
- Operates on 12 V to 24 V DC
- Direct sensor/pipe mounting possible
- Multicolor LED for meter & sensor status

SMART TRANSMITTER



PO-600

ROTAMETERS



Features

- Range from 10 lph to 60000 lph
- End connections from 15NB to 125NB
- Single piece injection moulded polycarbonate body
- SS316 rod & float
- Factory calibrated with traceability
- Temper-proof sunlight-proof graduation sticker
- PTFE coated float for 20NB end connectors

(Panel mount/online/flanged/trichlor with over 15 different models available to suit all ranges)

Features

- Flow meter with built-in totalizer
- Measuring range from 0.05 m³/Hr to 500 m³/Hr
- Dual input facility
- Operation mode
 - Batcher
 - Pulsar
 - Rate Switch
 - Flow comparator
- User settable percentage recovery
- 4-20 mA or RS485 output available for monitoring and data logging optionally
- Fittings optionally available

DIGITAL FLOW METER



FT-650

Full Bore: 20NB,25NB,50NB
Insertion Type Sensor: 40NB to 300 NB

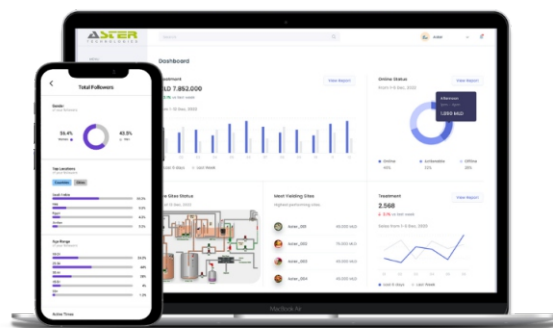
MAG FLOW METER



Features

- Suitable for any type of conductive fluid
- High accuracy
- No moving parts to wear & break
- All meters individually calibrated
- Reverse flow warning
- Negligible pressure drop
- Unaffected by density or viscosity
- High turn-down ratio
- Ideal for outdoor installation
- 270° rotating display
- Line empty function
- Telemetry Ready** for monitoring/ data logging(4-20 mA/ RS485)

| LINE SIZE | FLOW RANGE |
|-----------|---------------------------|
| 25 NB | 0.2-10 m ³ /hr |
| 40 NB | 01-20 m ³ /hr |
| 50 NB | 02-35 m ³ /hr |
| 65 NB | 04-60 m ³ /hr |
| 80 NB | 06-90 m ³ /hr |
| 100 NB | 07-140 m ³ /hr |



Also available
-Insertion Type Mag Flow Meter

DIGITAL WATER LEVEL RECORDER (DWLR)

Features

- Piezometric DWLR with Telemetry perfectly suited for Borewell's.
- In accordance with **CGWA** guidelines
- Plug and play meter.
- Hydrostatic measurement of level, without any wiring/ configuration at site
- Cloud Data monitoring.
- Can be easily integrated with existing flow telemetry systems.
- Range: 0-50m/ 0-100m



AUTOMATIC WATER DISPENSER UNIT



CARD TYPE

COIN TYPE

CARD + COIN TYPE

(*Single as well as Multi Tap options)

Features

- Hassle free uninterrupted water 24 X 7
- Dispense exact quantity of water in every batch
- Can dispense different batches according to different coins
- Operates even with 2 feet head
- Minimal jar filling time
- Separate cabinet with lock for coin collection
- Low power consumption, can even work on UPS
- Password protected settings
- All parameters are settable at site by authorised person only
- Advanced options available with GPRS modem for remote monitoring
- Solar power operated optionally available

ASTERO QR

Features

- Upgrade any existing coin based dispenser*
- Cashless transactions, works with all UPI services
- Receive funds within 48 hours.
- Auto-refunds, hassle free experience
- SIM Card provided*



PRESSURE SWITCHES



LPS



HPS



LPS/HPS NXT

Features

- Ranges
 - LPS: 0.5 to 5 Kg/Cm
 - HPS: 2.0 to 25 Kg/Cm
- Both NO/NC contacts
- Fixed Hysteresis
- Easy to install
- All plastic corrosion free wetted parts
- New NXT pressure switch with **metal enclosure** & **adjustable scale**

Features (Level Switch)

- Good repeatability
- Compact design enables level sensing within ± 5 mm
- Available length- 2, 5 & 10 meter (2 core)

*Option for acid application **NEW**

Features (Floaty)

- Adjustable level differential
- Hermatically sealed case & cable
- Corrosion free, long life & rust proof
- Suitable for sludge & effluent treatment
- Available cable lengths: 3, 5 & 10 meters

MAGNETIC LEVEL SWITCHES



NC type



NO type



Floaty

SDI Kit

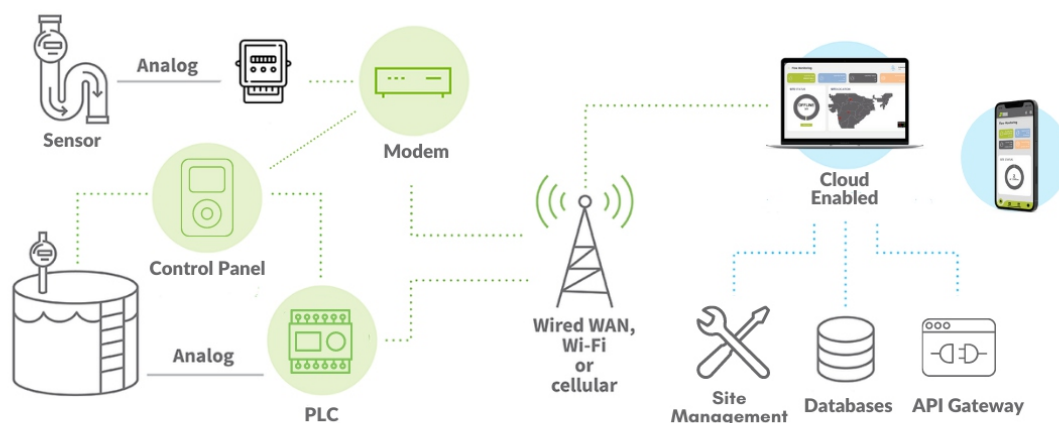


Features

- Best way to check filtration efficiency to enhance life of membrane
- Integral SS needle valve for pressure control
- Quick release coupling making multi-point sampling convenient
- Automatic air release valve
- 500 ml beaker for sampling
- 40 mm diameter 0-4 kg/cm² online pressure gauge

Remote Monitoring

Organizations have always had to innovate, control costs, and ensure the highest levels of customer service, but the current pace and scale of change is unprecedented, as are the challenges presented by globalization and commodification.



We offer expertise in **Field instruments with Remote Monitoring** capabilities as well as a supporting Services in the form of **Dashboards, API's, and other tailored software's** to provide an end-to-end solution for WTP's, ETP's, STP's as well as Water ATM's across remote locations.

Our remote monitoring team is well experienced in microservices architecture and frameworks, various communication models, and selecting the right communication and serialization protocols to maximize efficiency based on use cases.

Other areas of expertise include **key management**, and **API design**.

www.astertechnologies.in

A2855, H No. 478/2, S. No.32/3/14,
Opp. "Sarthak Belva Hsg. Scy.",
Kondhwa Budruk, Tal.: Haveli, Pune- 411048
Phone: +91 9766747958 | Email: sales@astertechnologies.in

