

Tribrid Video Recorder

Model: iV-TY0804H-V2



iV-Pro® Model - iV-TY0804H-V2 is a 8 Channel 2MP Lite HD Tribrid Video Recorder that delivers high resolution up to 2MP HD recording videos that supports 1080p Cameras. The new Tribrid supports H.265 Video Compression for more space storage and better performance. Tribrid technology features channel type settings to change from AHD to iP-HD Mode and Mix Mode.

It also supports 10/100 Ethernet connection for a smooth video playback. Its Connectivity includes HD HDMI Output, VGA, Cloud Technology, Wi-Fi & 4G, and many more features, along with software support for Computers and Mobile Apps.

Features

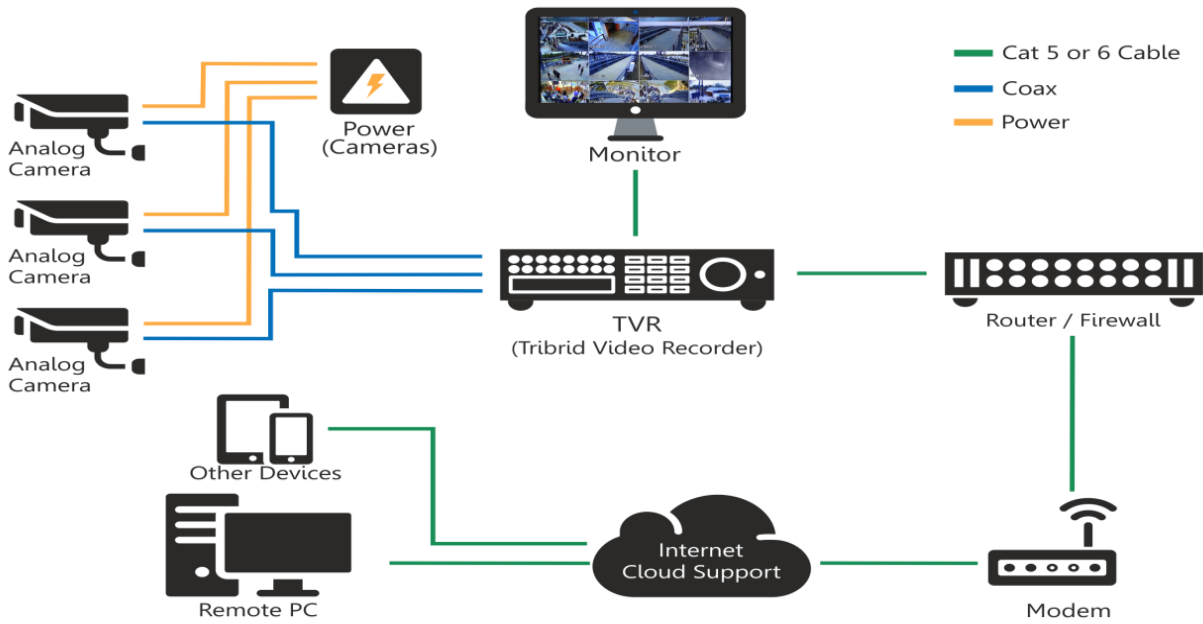
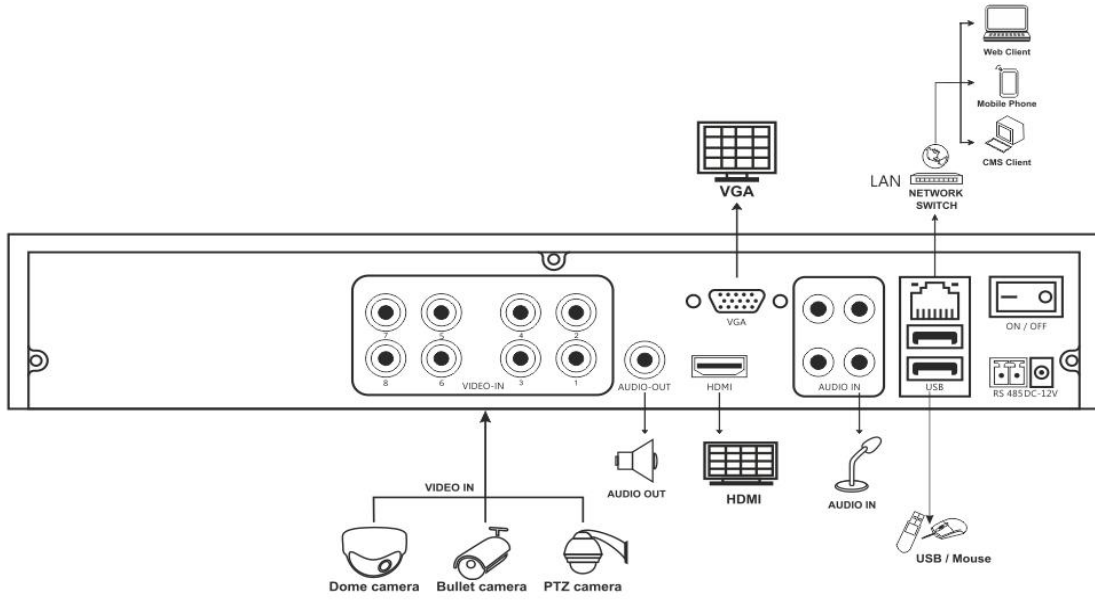
- 8 Channel AHD 2MP dedicated HD Tribrid Video Recorder
- Supports multiple channel mode choices, with up to 2MP iP-HD
- Advanced H.265 technology for maximum recording time
- Graphical User Interface function operated from mouse or remotely
- Supports 1 Sata Drives of 8TB each with total capacity up to 8TB
- Instant backup on pen drives and external storage drives
- Easy access from computers and mobile phones with 4G and Wi-Fi

Technical Specifications:



Model	iV-TY0804H-V2
MAIN PROCESSOR	Quad-core embedded processor
OPERATING SYSTEM	Embedded LINUX
AHD VIDEO INPUT	8 X 2MP
AUDIO INPUT/OUTPUT	4 Channel Input/1 Channel Output, RCA
INTERFACE	HD-HDMI; 1 VGA
RESOLUTION	1920 × 1080; 1280 × 1024; 1280 × 720; 1024 × 768
DISPLAY SPLIT	1/4/8
OSD	Camera title; Time; Video loss; Camera lock; Motion detection; Recording
COMPRESSION	H.264/ H.265
RECORDING RESOLUTION	1080n (1920 × 1080); 720p (1280 × 720); D1(704 × 576) (704 × 480); CIF (352 × 288)
FRAME RATE	1–15/25/30 fps
VIDEO BIT RATE	16 kbps ~ 20 Mbps, per channel
RECORDING MODE	Schedule (Regular/Continuous, Motion Detection, Alarm); Manual; Stop
VIDEO DETECTION	Motion Detection—MD Zones: 396 (22 × 18); Video Loss; Camera Blank
ALARM INPUT	None
SYNC PLAYBACK	4*1080n
SEARCH MODE	Search by Time/calendar/event/channel
PLAYBACK FUNCTION	Play; Pause; Stop; Rewind; Fast play; Slow play; Next File; Previous File; Next Camera; Previous Camera; Full Screen; Repeat; Shuffle; Backup selection; Digital Zoom
BACKUP MODE	USB Device; Network
ETHERNET	1 RJ-45 port (10/100 Mbps)
SMART PHONE COMPATIBILITY	iPhone; iPad; Android
INTERNAL HDD	1 SATA Ports; up to 8TB
EXTERNAL HDD	Support Via USB
USB PORTS & RS232 PORTS	3 (2 rear USB3.0; 1 front USB2.0), 1 Port for Communication
POWER CONSUMPTION	17.5 W max (without HDD), 100~240 VAC, 50/60 Hz
OPERATING TEMPERATURE & DIMENSIONS	14°F to 131°F (–10°C to 55°C) (LXBXH)mm 250X220X40
WEIGHT (WITHOUT HDD)	2.15 KG

Connection Diagram:



✉ info@ivpro.in 🌐 www.ivpro.in



scan this QR Code

Customer Care
care@ivpro.in



Specifications are subject to change without notice.
iV-Pro is a trademark of iView Technologies Co, India & Hongkong.
Copyright 2017 iView Technologies Co. All rights reserved.