

NUCTECH™ CX6550BI X-RAY INSPECTION SYSTEM



EN



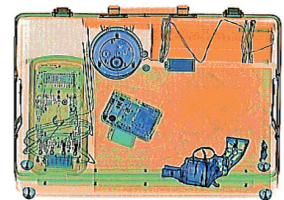
Overview

The NUCTECH™ CX6550BI is an advanced dual-energy X-ray inspection system, newly developed with modern and ergonomic design. With a tunnel opening of 655mm in width and 503mm in height, the CX6550BI is perfectly suitable for security and customs requiring screening of hand-held baggage, small parcels and cargoes, and can be widely used in airports, mass transit stations, critical infrastructures and big events, etc.

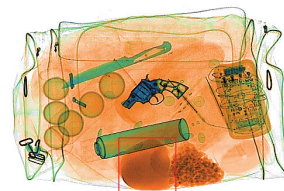
The CX6550BI comes from the best proven CX series products platform, and has fully inherited the unsuppressed image performance, friendly user interface, practical and powerful functions. Following the consistent technical optimism and improvements, the CX6550BI will surely be the trusted choice of X-ray screening solutions.

Technical Features

- World-leading image quality with high wire resolution of 40AWG and steel penetration up to 40mm.
- Explosives and narcotics detections and alarms according to the atomic number signatures.
- TIP provides a practical solution for operator performance monitoring and training, as well as reducing the probability of threats misses effectively.
- Designed with hermetic radiation safety protection, X-ray leakage around the equipment is close to natural background level, which complies with all international safety and health standards.
- Ergonomic keyboard and user interface design ensure the efficiency and professionals of baggage screening operating.
- High reliable operating and data storage safety are guaranteed by applications of industrial computer, embedded system, and data access strategy and configurations.
- Based on windows platform and network connections, the X-ray system can be extended on remote synchronous console and images centralized storage, etc.
- Modular design and constructions, combined with full built-in diagnostic facilities, make the system maintenance more economic and efficient.



Advanced material classification: Orange for organic, blue for metal and green for mixed material



Automatic detection of drugs

Technical Specifications

General Specifications

Tunnel Dimensions	655mm(W) × 503mm(H)
Conveyor Speed	0.20m/s
Conveyor Height	680mm
Max. Load	160Kg

Image Performance

Wire Resolution	0.08mm (40AWG)
Steel Penetration	40mm
Display Resolution	1280 × 1024

Image Processing System

Image Enhancement	Color/BW, negative, high/low penetration, organic /inorganic stripping, general enhancement, multi-absorptivity, and suspect material enhancement, etc.
Material Classification	According to atomic number signatures
ROI & Zoom	Step/stepless zoom, up to 32 times enlargement
Image Recall	Preceding images recallable
Image Storage Capability	Up to 50,000

Miscellaneous Functions

Standard Functions	Time/date display, counters, user management, system-on/X-ray-on timers, power on self test, built-in diagnostic facilities, dual-direction scanning, system log, system standby and training, etc.
Optional Functions	Explosives/narcotics detections, high-density area alert, threat image projection (TIP) , recheck workstation and image storage server, etc.

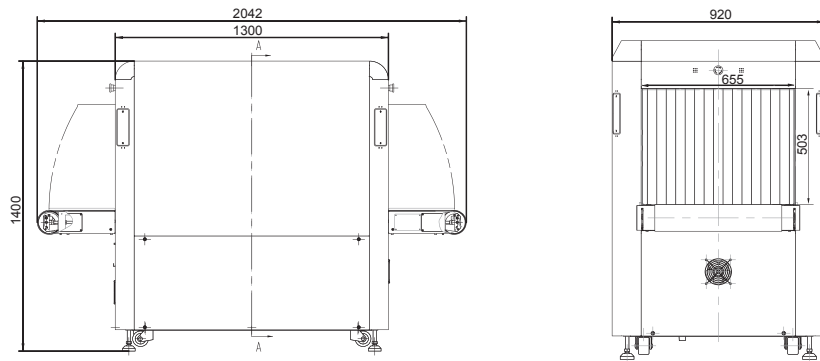
Health and Safety

X-ray Leakage	Less than 1μGy/h (5cm from the housing) , complying with all published international standards
Film Safety	Guaranteed for high speed film up to ASA/ISO1600 (33DIN)

Installation Data

Dimensions	2042mm(L) × 920mm(W) × 1400mm(H)
Weight	600Kg
Storage Temperature / Humidity	-40°C ~ +60°C / 5% ~ 95% (non-condensing)
Operating Temperature / Humidity	0°C ~ +40°C / 5% ~ 95% (non-condensing)
Power Supply	220VAC / 110VAC, -15% ~ +10%; 50Hz / 60Hz, ± 3Hz
Power Consumption	0.8kVA

Note: Specification is based on test piece complies with GB15208.2-2006



NUCTECH COMPANY LIMITED
 Address: 2/F Block A, Tongfang Building,
 Shuangqinglu, Haidian District,
 Beijing 100084, P.R.China
 Tel: +8610 62780909
 Fax: +8610 62788896/62784270
 Http://www.nuctech.com

NUCTECH SYDNEY PTY LTD.
 Address: Suite 4.04, 77 Dunning Avenue,
 Rosebery NSW 2018 Australia
 Tel: +612 96622307/96622317
 Fax: +612 96622371

NUCTECH HONG KONG COMPANY LTD.
 Address: Room 1602, The Metropolis Tower,
 10 Metropolis Drive, Hunghom
 Kowloon Hong Kong
 Tel: +852 27221828
 Fax: +852 27221849

NUCTECH WARSAW COMPANY LIMITED SPOTKA Z.O.O.
 Address: ul. Pandy 18
 02-202 Warsaw Poland
 Tel: +4822 6591545
 Fax: +4822 6581483

NUCTECH COMPANY LTD. SUCURSAL ARGENTINA
 Address: Juana Azurduy 1520, Piso 4
 Oficina C, Buenos Aires,
 Argentina
 Tel: +5411 47045924
 Fax: +5411 47045459
 Mobile: +54911 66630041/65314065

NUCTECH COMPANY LTD. SUCURSAL VENEZUELA RIF: J-30949364-7
 Address: Av. Francisco de Miranda, Centro
 Plaza, Torre A Piso 19, Oficina 19-C-D,
 Caracas, Venezuela
 Tel: +58212 2852594/2854194
 Fax: +58212 2854194
 Mobile: +58412 3217001

