



FRP STRUCTURAL PROFILES



GRP or FRP Structural pultruded profiles are manufactured by combining a resin matrix with a fibre reinforcement. This is formed and cured in a continuous process creating a product of extraordinary strength and resilience. GRP Structural Pultruded Profiles provide a variety of benefits and mechanical properties matching or exceeding steel equivalents. A wide range of structural profiles are available including U Channel, I-Beam, Tube, Box, Angle, Rod & Hand Rail.

Advantages of FRP

- | Corrosion & Chemical Resistance | High Strength to weight Ratio | Electric and Thermal Insulator RFI/ EMI Transparent
- | Light Weight | Easy Installation | Low Maintenance | Long Lasting
- | Superior Ergonomics | Fire resistance | Aesthetic

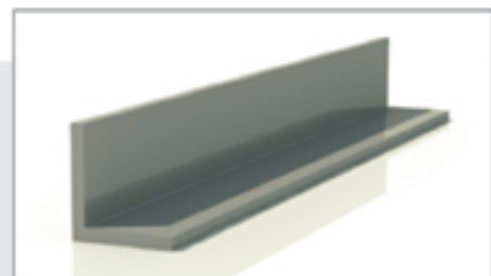
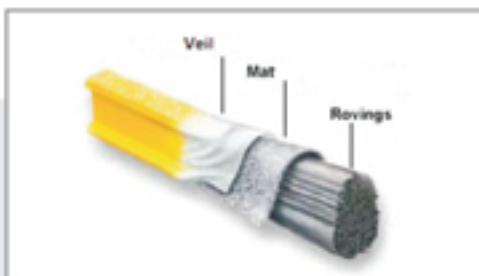
Industry Segments

- | Off Shore Oil Platforms | Cooling Towers | Chemicals Plants | Refineries | Electroplating Industry | Effluent Treatment Plants
- | Food & Drug Industries | Power Plants | Architectural Application | Paper Industries | Electronic Equipments
- | Telecommunication Industry | and many more...

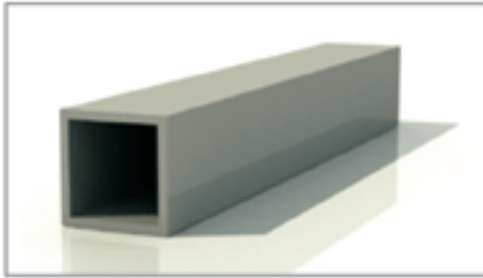
Resin System

As a standard, Isophthalic polyester resins are used for the matrix. To fulfill special requirements the following resin types are applied:

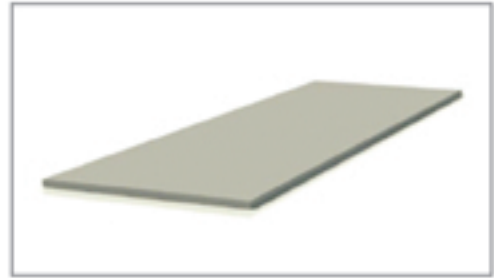
- Isophthalic resin: moderate corrosion resistance and fire resistance
- Vinyl ester resin: extreme corrosion resistance and fire resistance
- Phenolic resin: high temperature and fire resistance
- Epoxy resin: special electrical properties and high strength



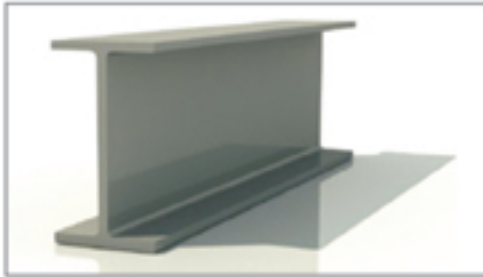
Angles



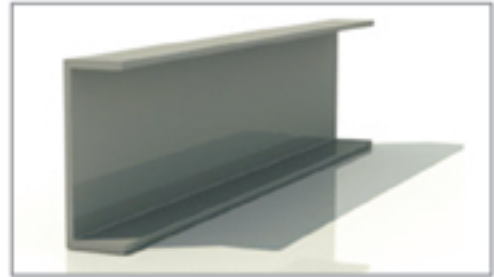
Square



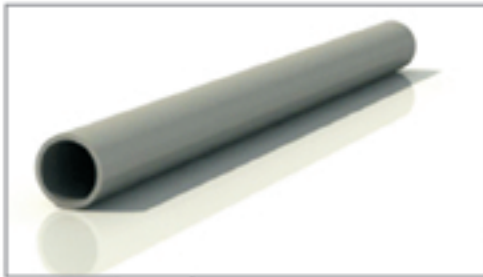
Flat Strip



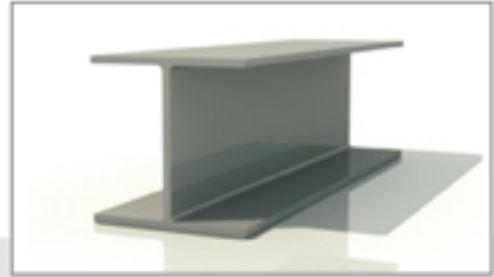
I beams



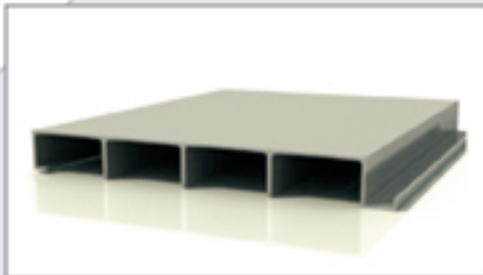
U channel



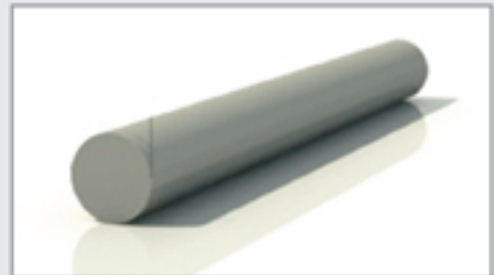
Round tube



Wide Flange Beams



Trench Covers



Solid Rods

The profiles listed above are only a very small proportion of our range. If you should require a custom profile please do not hesitate to contact us. All profiles manufactured in accordance with ISO 9002.



FRP/GRP Cable Tray



FRP/GRP Structural Profiles



FRP Ladder



FRP/GRP Luminaries



FRP/GRP Handrails & Fencing



FRP/GRP Gratings



FRP/GRP Canopy



FRP/GRP Storage Tanks



FRP/GRP Trefoil Clamp



FRP/GRP Poles & Mast



THE COMPOSITE EXPERT...

AERON COMPOSITE PVT. LTD.

Reg. Off.: - Block No. 496/P, Shade "A", Tajpur Road, Sarkhej Bawala Highway, Changodar - 382213 Tal. Sanand, Ahmedabad, Gujarat - INDIA.

T : +91-79-6525 8500 | F : +91-79-26561238 | M : +91-99099 88266

E : info@aeroncomposite.com | W : www.aeroncomposite.com

