

# Mittal Corporation



Product  
Catalog



# Company Profile

Mittal Corporation, established in 2009 is a prominent manufacturer specializing in P.T.F.E. Thread Seal Tape, based in Jaipur, Rajasthan, India. With over a decade of experience, Mittal Corporation has established itself as a trusted name in the industry, offering high-quality sealing solutions to various sectors.

**Core Offerings :** Mittal Corporation's core offering revolves around the manufacturing and distribution of P.T.F.E. Thread Seal Tape. This specialized tape is renowned for its exceptional sealing properties, durability, and versatility, making it indispensable in plumbing, industrial, and engineering applications.

**Quality Assurance :** At Mittal Corporation, quality is paramount. We adhere to stringent quality control measures throughout the manufacturing process, ensuring that every roll of P.T.F.E. thread seal tape meets the highest standards of performance, reliability, and consistency. Our commitment to quality assurance has earned us the trust and loyalty of our customers.



**Customization and OEM Services** : Recognizing the diverse needs of our clients, Mittal Corporation offers customization services for P.T.F.E. thread seal tape. We work closely with our customers to understand their specific requirements and tailor our products accordingly. Additionally, we provide OEM (Original Equipment Manufacturer) services, allowing clients to leverage our expertise and infrastructure to create bespoke solutions under their brand name.

**Commitment to Sustainability** : As part of our commitment to environmental stewardship, Mittal Corporation prioritizes sustainability in our operations. We strive to minimize our carbon footprint, reduce waste, and adopt eco-friendly practices wherever possible, contributing to a greener, more sustainable future.

**Global Reach** : While headquartered in Jaipur, Rajasthan, Mittal Corporation serves a diverse clientele across India and beyond. Our products are distributed nationally and internationally, reaching customers in various industries and markets.

**Conclusion** : With a decade of expertise, unwavering dedication to quality, and a customer-centric approach, Mittal Corporation continues to lead the way in the manufacturing of P.T.F.E. thread seal tape. As we look to the future, we remain committed to innovation, excellence, and exceeding the expectations of our valued customers.



# Mission & Vision

Absolutely, that's a clear and focused mission and vision statement Mission : Mittal Corporation's mission is to provide reliable sealing solutions with PTFE Thread Seal Tape, ensuring zero leakage of gas, water, oil, steam, and other substances. Our vision is to become the leading manufacturer of PTFE Thread Seal Tape in India, setting new standards for quality and performance. We aspire to be recognized as the premier provider of PTFE tapes in the Indian industry, delivering the best products and exceeding customer expectations. Promoting make in india product with atma nirbhar bharat program and using 100% indian raw material and promoting indian economy and product , mittal corporation is looking to become the leading and professional manufacturer and supplier for ptfе thread seal seal tape in india in next 5 years.

That's an ambitious and commendable goal! By promoting "Make in India" products and supporting the Atma Nirbhar Bharat program, Mittal Corporation not only contributes to the growth of the Indian economy but also emphasizes self-reliance and sustainability. Utilizing 100% Indian raw materials further strengthens the local economy while ensuring product quality and control. With a strategic focus on becoming the leading and professional manufacturer and supplier of PTFE Thread Seal Tape in India within the next five years, Mittal Corporation demonstrates a commitment to innovation, excellence, and national development.



# Team & Management

**Team & Management Management** : This includes executives, directors, and managers who oversee various aspects of the company's operations, including production, sales, finance, and human resources.

**Production and Operations** : These are the individuals responsible for overseeing the manufacturing process, ensuring efficiency, quality control, and adherence to safety standards. Research and

**Development (R&D)** : This team focuses on innovation, product development, and improving existing products or processes to meet customer needs and stay competitive in the market.

**Sales and Marketing** : This team is responsible for promoting Mittal Corporation's products, acquiring new customers, managing relationships with existing customers, and identifying market opportunities.

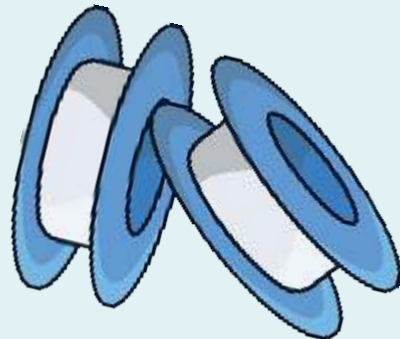
**Quality Assurance/Quality Control** : These individuals are responsible for ensuring that the products manufactured by Mittal Corporation meet the highest quality standards through rigorous testing and inspection processes.

**Customer Service** : This team handles inquiries, orders, and any issues or concerns that customers may have, providing support and maintaining positive relationships with clients.

**Supply Chain and Logistics** : This team manages the procurement of raw materials, inventory management, and the transportation of finished products to customers.

**Administrative and Support Staff** : This includes roles such as administrative assistants, accountants, IT support, and other support staff who help ensure the smooth functioning of the company's operations.

Overall, Mittal Corporation's team likely comprises individuals with diverse skills and expertise, working together to drive the company's success and deliver high-quality products and services to customers.





# Product Technical Specification

NO	WIDTH	THICKNESS	LENGTH
1	12 mm	0.07 mm	6.5 m
2	12 mm	0.07 mm	8 m
3	12 mm	0.075 mm	10 m
4	12 mm	0.075 mm	12 m
5	1/2"	0.075 mm	260"
6	1/2"	0.075 mm	400"
7	1/2"	0.1 mm	520"
8	13 mm	0.1 mm	10 m
9	13 mm	0.1 mm	15 m
10	19 mm	0.07 mm	10 m
11	19 mm	0.075 mm	12 m



NO	WIDTH	THICKNESS	LENGTH
12	19 mm	0.1 mm	15 m
13	19 mm	0.2 mm	20 m
14	3/4"	0.075 mm	260"
15	3/4"	0.1 mm	520"
16	3/4"	0.2 mm	260"
17	25 mm	0.075 mm	10 m
18	25 mm	0.1 mm	12 m
19	25 mm	0.1 mm	15 m
20	1"	0.075 mm	520"
21	1"	0.1 mm	260"
22	1"	0.2 mm	260"

**Note** Technical Specification (width, thickness, length) can also be customised as per client requirement.

# Quality Assurance

Our company for P.T.F.E. Thread Seal Tape involves rigorous processes to ensure superior product performance. We source high-quality P.T.F.E materials from trusted suppliers, ensuring they meet our strict standards for purity and performance.

**Manufacturing Process** : Our state-of-the-art manufacturing facilities employ advanced technology and skilled personnel to produce P.T.F.E. thread seal tape with precision and consistency.

**Quality Control** : Throughout the production process, our dedicated quality control team conducts thorough inspections and tests to verify adherence to specifications and standards.

**Performance Testing** : Our P.T.F.E. thread seal tapes undergo comprehensive performance testing to evaluate sealing effectiveness, durability, and resistance to various conditions such as temperature and pressure.

**Packaging** : We ensure that our products are securely packaged to prevent damage during transportation and storage, maintaining their quality until they reach the end user. By implementing stringent quality assurance measures at every stage, Mittal Corporation guarantees that our P.T.F.E. thread seal tapes meet the highest standards of excellence, providing reliable sealing solutions for our customers.

## OEM / Customization Order



Indeed, at Mittal Corporation, we understand that every client may have specific quality standards and brand requirements. Therefore, we offer OEM (Original Equipment Manufacturer) services for PTFE Thread Seal Tape production. Our OEM capabilities allow us to customize the manufacturing process according to the client's specifications, including quality standards and branding preferences. Whether it's adjusting the materials used, modifying the manufacturing process, or incorporating specific branding elements, we work closely with our clients to meet their unique needs. By offering OEM services, Mittal Corporation ensures that our clients receive PTFE thread seal tapes that not only meet their quality standards but also align with their brand identity, fostering long-term partnerships and customer satisfaction.



MC-001

12 / 19 / 24 mm  
15 / 20 / 25 mtrs.



MC-002

12 / 19 / 24 mm  
15 / 20 / 25 mtrs.



Large Series

12 / 19 / 24 mm  
15 / 20 / 25 mtrs.



MC-003

12 / 19 / 24 mm  
15 / 20 / 25 mtrs.



MC-004

12 / 19 / 24 mm  
15 / 20 / 25 mtrs.



MC-005

12 / 19 / 24 mm  
15 / 20 / 25 mtrs.



MC-006

12 / 19 / 24 mm  
10 / 12 / 15 mtrs.



MC-007

12 / 19 / 24 mm  
10 / 12 / 15 mtrs.



MC-008

12 / 19 / 24 mm  
10 / 12 / 15 mtrs.





**Medium Series** *12 / 19 / 24 mm*  
*10 / 12 / 15 mtrs.*



**MC-009** *12 / 19 / 24 mm*  
*10 / 12 / 15 mtrs.*



**MC-010** *12 / 19 / 24 mm*  
*10 / 12 / 15 mtrs.*



**MC-011** *12 / 19 / 24 mm*  
*10 / 12 / 15 mtrs.*



**MC-012** *12 / 19 / 24 mm*  
*10 / 12 / 15 mtrs.*



**MC-013** *12 / 19 / 24 mm*  
*10 / 12 / 15 mtrs.*



**MC-014** *12 / 19 / 24 mm*  
*10 / 12 / 15 mtrs.*



**MC-015** *12 / 19 / 24 mm*  
*10 / 12 / 15 mtrs.*



**MC-016** *12 / 19 / 24 mm*  
*10 / 12 / 15 mtrs.*



**MC-017** 12 / 19 / 24 mm  
05 / 08 / 10 mtrs.



**MC-018** 12 / 19 / 24 mm  
05 / 08 / 10 mtrs.



## Small Series

12 / 19 / 24 mm  
05 / 08 / 10 mtrs.



**MC-019** 12 / 19 / 24 mm  
05 / 08 / 10 mtrs.



**MC-020** 12 / 19 / 24 mm  
05 / 08 / 10 mtrs.



**MC-021** 12 / 19 / 24 mm  
05 / 08 / 10 mtrs.



**MC-022** 12 / 19 / 24 mm  
05 / 08 / 10 mtrs.



**MC-023** 12 / 19 / 24 mm  
05 / 08 / 10 mtrs.



**MC-024** 12 / 19 / 24 mm  
05 / 08 / 10 mtrs.

# Our Brand (Leak Seal)

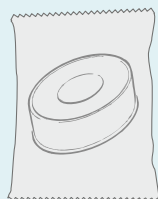


## Note

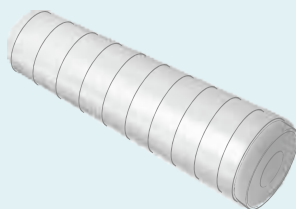
### LEAK SEAL P.T.F.E TAPES :

Leak Seal Brand offers high quality P.T.F.E Thread Seal Tape, providing reliable sealing solutions for plumbing and industrial applications. Available in widths of 12.5 mm, 19 mm, and 25 mm, and various lengths, including 10 meters, 12 meters, 15 meters & 20 meters, Leak Seal Brand meets diverse sealing needs. Leak Seal Brand is seeking Dealers, Distributors. Buying Agents, Wholesalers state-wise, district-wise, PAN India. If interested in partnering with us, please contact us for further details and opportunities.

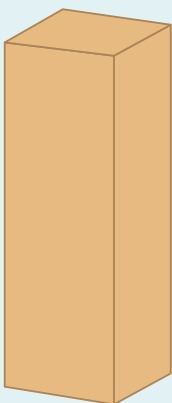
# Our Packaging



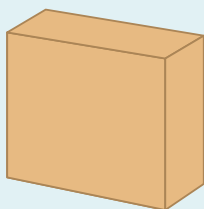
1 Pc. Pouch



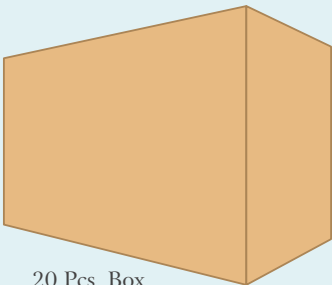
10 Pcs. Shrink Rap



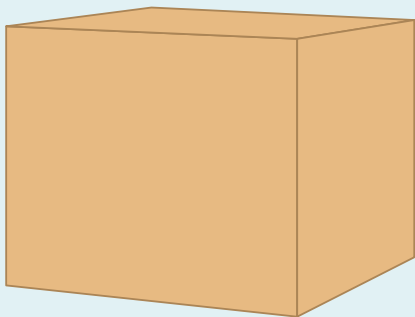
10 Pcs. Box



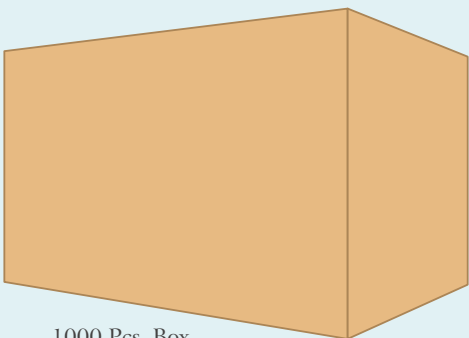
1 Pc. Box



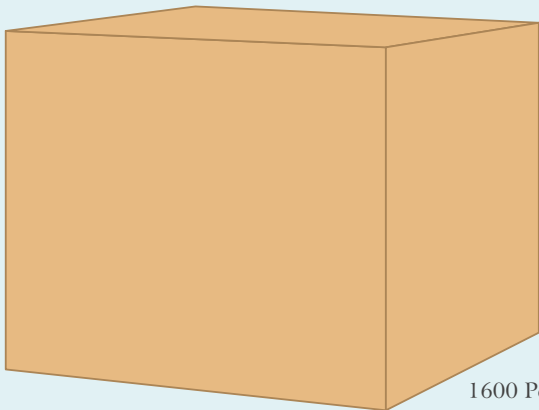
20 Pcs. Box



250 Pcs. Box



1000 Pcs. Box



1600 Pcs. Box



# Production Line



# Quality Assurance

Introducing Leak Seal Brand P.T.F.E Thread Seal Tape : Leak Seal Brand offers high-quality P.T.F.E Thread Seal Tape, providing reliable sealing solutions for plumbing and industrial applications. Available in widths of 12mm, 19mm, and 25mm, and various lengths, including 10 meters, 12 meters, and 15 meters, Leak Seal Brand meets diverse sealing needs.

**Product Packaging :** #12mm Width Tape: 1 piece per single box, 20 boxes per inner box, 75 inner boxes in 1 master carton, totalling 1500 pieces per master carton. #19mm Width Tape : 8 pieces per shrink, 20 shrinks per inner box, 8 inner boxes per master carton, totaling 1280 pieces per master carton. # 25mm Width Tape : 6 pieces per shrink, 20 shrinks per inner box, 8 inner boxes per master carton, totaling 960 pieces per master carton.

**Business Opportunity :** Leak Seal Brand is seeking Dealers, Distributors, Buying Agents, Wholesalers state-wise, district-wise, PAN India. If interested in partnering with us, please contact us for further details and opportunities.

For inquiries and collaboration opportunities, please reach out to us at [Contact Information]. Join us in providing reliable sealing solutions with Leak Seal Brand P.T.F.E Thread Seal Tape, and let's create mutually beneficial partnerships across India.



## Notes :



# Mittal Corporation

Manufacturer of : P.T.F.E. Thread Seal Tapes  
Since 2009

website : [www.indiaptfe.com](http://www.indiaptfe.com)

+91-9571717360

[mittalcorporate@gmail.com](mailto:mittalcorporate@gmail.com)



Scan this code to  
WhatsApp Chat

Head Office : B-1/103, Tulsi Path,  
Chitrakoot-1st, Vaishali Nagar,  
Jaipur-302021 (Raj.) India

Factory : H-1/179, Ground Floor,  
Bindayaka Industrial Area (RIICO),  
Jaipur-302012 (Raj.) India