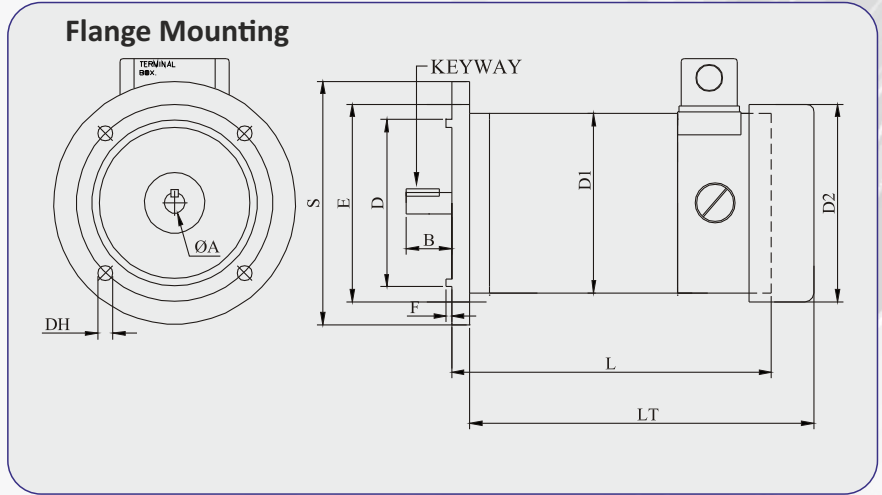




54, Annapurna Industrial Estate, Tilak Road,
Ghatkopar (E), Mumbai - 400 077 India
Tel: +91-22-21029911
E-mail: sales@excellaelectronics.com

PMDC MOTOR D118 SERIES

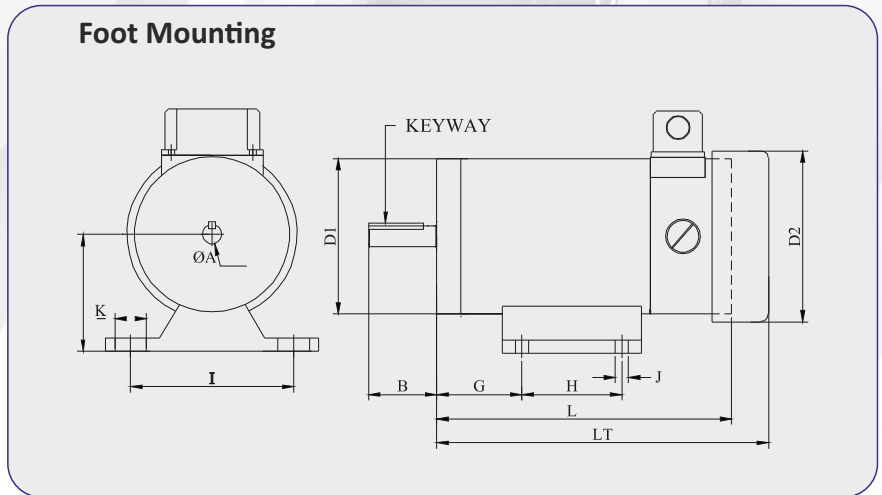
Mechanical Dimension



MECHANICAL DIMENSIONS FOR FLANGE MOUNTING MOTORS.

D1	FRAME	A	B	D	S	E	F	DH	KEYWAY
118	63 FR	11	23	95	140	115	3	10	20X4X2D
118	71 FR	14	30	110	160	130	3.5	10	22X5X3D

Mechanical Dimension



MECHANICAL DIMENSIONS FOR FOOT MOUNTING MOTORS.

D1	FRAME	A	B	C	G	H	I	J	K	KEYWAY
118	118 FT	15.85	52	89	65	76	124	10	24	42X5X3D

Technical Specification

POWER IN WATTS/HP	SPEED IN RPM		VOLTAGE IN VDC	CURR. IN AMPS	TORQUE IN KG-CM		INSL. CLASS	DUTY CYCLE	PROTECTION	TYPE	MOUNTING	FRAME	D2	L TENV	LT TEFC	WEIGHT (KG)
	S1	S2			T1	T2										
180/0.25	1500	3000	180	1.8	12	6	B	S1	IP 44	TEFC	FOOT	118FT	130	200	232	10.5
180/0.25	1500	3000	180	1.8	12	6	B	S1	IP 44	TEFC	FLANGE	71FR	130	207	239	
180/0.25	1500	3000	180	1.8	12	6	B	S1	IP 44	TEFC	FLANGE	63FR	130	232	264	
360/0.5	1500	3000	180	2.6	24	12	B	S1	IP 44	TEFC	FOOT	118FT	130	220	252	12.5
360/0.5	1500	3000	180	2.6	24	12	B	S1	IP 44	TEFC	FLANGE	71FR	130	227	259	
560/0.75	1500	3000	180	3.8	36	18	B	S1	IP 44	TEFC	FOOT	118FT	130	-	273	14.5
560/0.75	1500	3000	180	3.8	36	18	B	S1	IP 44	TEFC	FLANGE	71FR	130	-	280	

NOTE: THE ABOVE MOTOR CAN BE GIVEN IN FOOT OR FLANGE MOUNTING INCASE FOOT CUM FLANGE IS REQUIRED CHARGES EXTRA WILL BE CHARGED.



54, Annapurna Industrial Estate, Tilak Road,
Ghatkopar (E), Mumbai - 400 077 India
Tel: +91-22-21029911
E-mail: sales@excellaelectronics.com

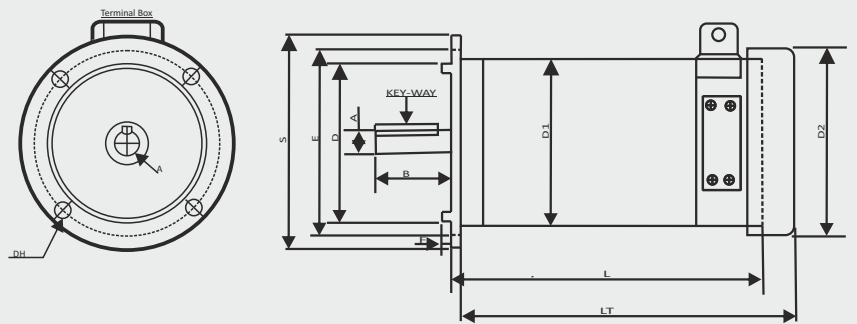
PMDC MOTOR D118 SERIES

Mechanical Dimension



(Battery Operated)

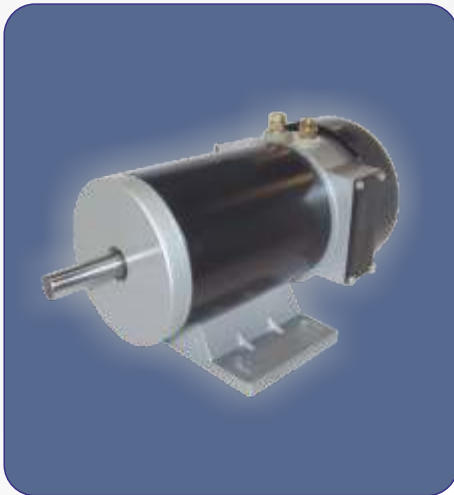
Flange Mounting



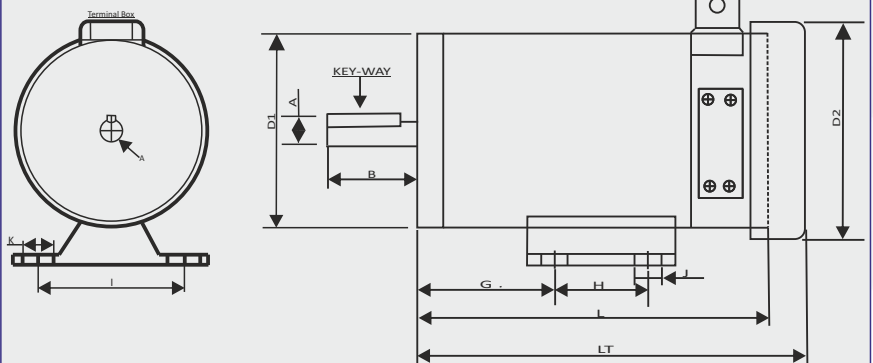
MECHANICAL DIMENSIONS FOR FLANGE MOUNTING MOTORS.

D1	FRAME	A	B	D	S	E	F	DH	KEYWAY
118	63 FR	11	23	95	140	115	3	10	20X4X2D
118	71 FR	14	30	110	160	130	3.5	10	22X5X3D

Mechanical Dimension



Foot Mounting



MECHANICAL DIMENSIONS FOR FOOT MOUNTING MOTORS.

D1	FRAME	A	B	C	G	H	I	J	K	KEYWAY
118	118 FT	15.85	52	89	65	76	124	10	24	42X5X3D

Technical Specification

POWER IN WATTS/HP	SPEED IN RPM		VOLTAGE IN VDC		CURR. IN AMPS		TORQUE IN KG-CM		INSL. CLASS	DUTY CYCLE	PROTECTION	TYPE	MOUNTING	FRAME	D2	L TENV	LT TEFC	WEIGHT (KG)
	S1	S2	V1	V2	A1	A2	T1	T2										
180/0.25	1500	3000	12	24	18.8	9.3	12	6	B	S1	IP 44	TEFC	FOOT	118FT	130	200	232	12.5
	1500	3000	12	24	18.8	9.3	12	6	B	S1	IP 44	TEFC	FLANGE	71FR	130	207	239	
	1500	3000	12	24	18.8	9.3	12	6	B	S1	IP 44	TEFC	FLANGE	63FR	130	232	264	
360/0.5	1500	3000	12	24	37.5	19.0	24	12	B	S1	IP 44	TEFC	FOOT	118FT	130	220	252	12.5
	1500	3000	12	24	37.5	19.0	24	12	B	S1	IP 44	TEFC	FLANGE	71FR	130	227	259	
560/0.75	1500	3000	12	24	58.5	29.0	36	18	B	S1	IP 44	TEFC	FOOT	118FT	130	-	273	14.5
560/0.75	1500	3000	12	24	58.5	29.0	36	18	B	S1	IP 44	TEFC	FLANGE	71FR	130	-	280	

NOTE: THE ABOVE MOTOR CAN BE GIVEN IN FOOT OR FLANGE MOUNTING INCASE FOOT CUM FLANGE IS REQUIRED CHARGES EXTRA WILL BE CHARGED.