



Exclusive Distributor:

EXCELLA ELECTRONICS

54, 2nd Floor, Annapurna Industrial Estate, Tilak Road, Ghatkopar (E), Mumbai - 400077
Tel: 022-2102 9911 | E-mail : sales@excellaelectronics.com



ISO 9001
CERTIFIED

ISO 14001 / OHSAS 18001
CERTIFIED

 **SWITCHING POWER SUPPLY**

INTRODUCTION

Lubi Electronics is an ISO 9001:2008 TUV certified organization dealing in Industrial Automation Products & Solutions. Lubi Electronics is committed to Design and Manufacture quality electronic products with competitive edge. Lubi is focused to excel in manufacturing of electronic products/components used in Industrial applications. Lubi has an experienced design and production team with latest design software and tools, in-house automated production line set up and highly reliable testing facility.

We aspire to become a preferred supplier of the products we manufacture and services we offer with continuous increasing supply and consistent high quality. We aim to continue developing new products with value added engineering solutions and technology to keep pace with growing & changing market requirement. We will continue to develop innovative concepts and skill engineering to cater various industrial solutions.



CERTIFICATES

CERTIFICATE ◆ CERTIFICADO ◆ CERTIFICAT ◆ 証明書 ◆ CERTIFICATE ◆ 証明書 ◆ CERTIFICADO ◆ CERTIFICAT ◆ 証明書 ◆ CERTIFICATE ◆ 証明書 ◆ CERTIFICADO ◆ CERTIFICAT ◆ 証明書



CERTIFICATE

The Certification Body
of **TUV SUD South Asia Private Limited**
certifies that



LUBI ELECTRONICS
Sardar Patel Ring Road, Near Karai Gam Patia,
Nana Chioda, Dist. Gandhinagar, Gujarat - 382 330, INDIA

has implemented a Quality Management System
in accordance with **ISO 9001:2015**
For Scope of

**Design, Manufacture, Sales & Service Of Control Panel,
Solar P.V. Panel, Solar Pump & System And Electronic Goods,
Distribution, Application And After Sales Service Of
Industrial Automation Products**

The certificate is valid From **2017-01-17** until **2020-01-16**
Subject to successful completion of annual periodic audits
The present status of this Certificate can be obtained on www.tuv.com
Further clarifications regarding the scope of this certificate may be obtained by contacting the certification body

Certificate Registration No. **99 100 03470**
Date of Initial certification : **2008-01-17**





TUV SUD South Asia Pvt. Ltd. • TUV SUD House • Sai Naka • Andher East • Mumbai - 400072 • Maharashtra • India





LUBI ELECTRONICS
Sardar Patel Ring Road, Nr. Bright School,
Nana Chioda, Dist. Gandhinagar, Gujarat-382330, INDIA
Phone : (91) 79 39845300
Fax : (91) 79 39845300
E-mail : info@lubielectronics.com
Website : www.lubielectronics.com

DECLARATION OF CONFORMITY

We hereby declare under our sole responsibility that the product manufactured below:

Name : **SMPS 24V 2A0V**
Model No. : **LE-A-24-10**

Manufactured by :
Address : **LUBI ELECTRONICS
Survey No. 246-205, 1st Floor,
S.P. Ring Road, Nana Chioda, Gandhinagar 382323, Gujarat, India.**

Contact person : **Mr. Anil S. Ahalja**
Phone number : **079-39845300**
Fax number : **079-39845300**
Email : **asahalya@lubielectronics.com**
Website address : **www.lubielectronics.com**

is in conformity to the following EC directives:

- 73/23/EEC - Low voltage directive
- 89/368/EEC
- with amendment 62011/EEC, 91/263/EEC and 2004/104/EEC directive.

And conforms to protection requirements of the following required standards:

Standards	Regarding
EN 60730 & EN 60950 EN 60529	EMC requirements LVD requirements

Under the following conditions:

- Installed as per installation guidelines mentioned in TCF
- All safety measures recommended are followed.

Technical documentation is available in the official language of the user and is retained with:

Name of the person responsible in EU : **Mr. Anil S. Ahalja**
Designation : **Director**
Address : **LUBI ELECTRONICS,
Survey No. 246-205, 1st Floor,
S.P. Ring Road, Nana Chioda, Gandhinagar 382323, Gujarat, India.**

Signed by : 
Date : **1st - April, 2011**
Place : **Gandhinagar, Gujarat, India**

Regd. Off. : Near Kalyan Mills, Naroda Road, Ahmedabad - 380 025, INDIA





LUBI ELECTRONICS
Sardar Patel Ring Road, Nr. Bright School,
Nana Chioda, Dist. Gandhinagar, Gujarat-382330, INDIA
Phone : (91) 79 39845300
Fax : (91) 79 39845300
E-mail : info@lubielectronics.com
Website : www.lubielectronics.com

DECLARATION OF CONFORMITY

We hereby declare under our sole responsibility that the product manufactured below:

Name : **SMPS 24V 2A0V**
Model No. : **LE-A-24-10**

Manufactured by :
Address : **LUBI ELECTRONICS
S Survey Industrial Estate, Naroda Road, Ahmedabad 380 025, Gujarat, India.
Mr. Anil S. Ahalja**

Contact person : **Mr. Anil S. Ahalja**
Phone number : **079-39845300**
Fax number : **079-39845300**
E-mail : **asahalya@lubielectronics.com**
Website address : **www.lubielectronics.com**

is in conformity to the following EC directives:

- 73/23/EEC - Low voltage directive
- 89/368/EEC
- with amendment 62011/EEC, 91/263/EEC and 2004/104/EEC directive.

And conforms to protection requirements of the following required standards:

Standards	Regarding
EN 60730 & EN 60950 EN 60529	EMC requirements LVD requirements

Under the following conditions:

- Installed as per installation guidelines mentioned in TCF
- All safety measures recommended are followed.

Technical documentation is available in the official language of the user and is retained with:

Name of the person responsible in EU : **Mr. Anil S. Ahalja**
Designation : **Director**
Address : **LUBI ELECTRONICS,
Mr. Anil S. Ahalja, Naroda Road, Ahmedabad 380 025, Gujarat, India.**

Signed by : 
Date : **1st - April, 2011**
Place : **Ahmedabad, Gujarat, India**

Regd. Off. : Near Kalyan Mills, Naroda Road, Ahmedabad - 380 025, INDIA

PRODUCTION PROCESS FLOW



SMT LINE



PCB ASSEMBLY



WAVE SOLDER



LABELING & PACKING



QUALITY CONTROL



BOX ASSEMBLY

MANUFACTURING FACILITIES



SMT LINE



WAVE SOLDER MACHINE

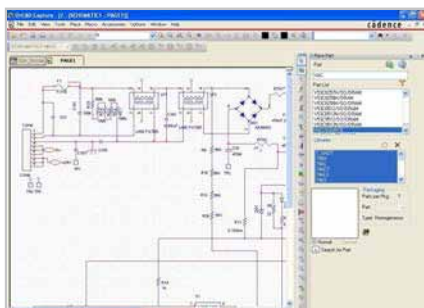


BURN-IN TEST

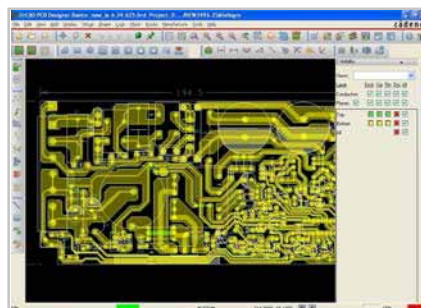


ENVIRONMENTAL CHAMBER

DESIGN TOOLS



SCHEMATIC



PCB LAYOUT



SOFTWARE SIMULATION

PRODUCT OVERVIEW



Features

- Semi Automated Production Line
- Panel , Economic Din-Rail & Standard Din-Rail mount Series Available
- Overload , Over Voltage & Short circuit protection
- 100% full load Burn-in test
- High Efficiency
- Low Ripple & Noise
- High Quality & Reliability
- Full Warranty
- All Models Available ex-stock

PANEL MOUNT

SINGLE OUTPUT SERIES				
Output Voltage	5V	12V	24V	48V
Output Current	up to 10A	up to 12A	up to 20A	up to 10A
Rated Power	up to 50W	up to 145W	up to 480W	up to 480W
DUAL/MULTI OUTPUT SERIES				
Output Voltage	12V/5V	24V/5V	24V/12V	+12V/-12V/5V
Output Current	up to 3A/4A	up to 2A/3A	up to 3.7A/3.7A	up to 1A/0.5A/2A
Rated Power	up to 60W	up to 60W	up to 125W	up to 45W

ECONOMIC DINRAIL

SINGLE OUTPUT SERIES				
Output Voltage	5V	12V	24V	48V
Output Current	up to 10A	up to 12A	up to 10A	up to 5A
Rated Power	up to 50W	up to 145W	up to 240W	up to 240W
DUAL/MULTI OUTPUT SERIES				
Output Voltage	12V/5V	24V/5V	24V/12V	+12V/-12V/5V
Output Current	up to 3A/4A	up to 2A/3A	up to 3.7A/3.7A	up to 1A/0.5A/2A
Rated Power	up to 60W	up to 60W	up to 125W	up to 45W

STANDARD DINRAIL

SINGLE OUTPUT SERIES			
Output Voltage	12V	24V	48V
Output Current	up to 10A	up to 10A	up to 5A
Rated Power	up to 120W	up to 240W	up to 240W

50-100W SINGLE/DUAL OUTPUT SERIES

New Compact Model



- Overload & Short circuit protection
- 100% Full Load Burn-in Test
- High Efficiency
- Low Ripple & Noise
- High Quality & Reliability
- Full Warranty
- Size : 130 x 98 x 40 (mm),
99 x 97 x 35 (mm) (LE-C-24-025)

AC input voltage & Frequency range..... 100V~264VAC / 50 Hz
 Leakage current..... <3 mA at 240V ac
 Efficiency..... >78%
 Load Regulation..... +/- 1%
 Line Regulation..... +/-1%
 Short Circuit Protection type..... Shutdown Output Voltage,
 Re-power On to Recover
 Withstand voltage..... I/P-O/P:1.5 KVAC,
 I/P-FG:1.5 KVAC,
 O/P-FG:0.5 KVAC,
 Working Temperature..... 10 to 60° C
 Relative humidity..... 20-95% RH Nonconducting
 Temperature Co-efficient..... +/-0.03% / °C

SINGLE OUTPUT SERIES

Panel Mount

Model No.	Output Voltage	Output Current	Rated Power
LESA50P24	24V	2.2A	50W
LESB100P24	24V	4.5A	100W
LESA50P12	12V	4.2A	50W

Modified Dinrail Series

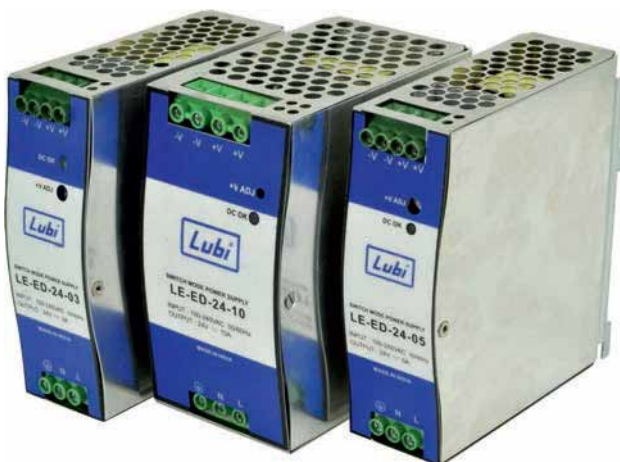
Model No.	Output Voltage	Output Current	Rated Power
LESA50B24	24V	2.2A	50W
LESB100B24	24V	4.5A	100W
LESA50B12	12V	4.2A	50W

DUAL OUTPUT SERIES

Model No.	CHANNEL-1		CHANNEL-2		Rated Power
	Output		Output		
	Voltage	Current	Voltage	Current	
LEDA65PA	5V	3A	12V	4A	65W
LEDA65BA	5V	3A	12V	4A	65W

STANDARD DINRAIL SERIES

New Compact Model



- Overload & Short circuit protection
- 100% Full Load Burn-in Test
- High Efficiency
- Low Ripple & Noise
- High Quality & Reliability
- Full Warranty
- Size : 125 x 113 x 40 (mm) , 125 x 113 x 63 (mm)

AC input voltage & Frequency range..... 100V~264VAC / 50 Hz
 Leakage current..... <0.75 mA at 240V ac
 Efficiency..... >80%
 Load Regulation..... +/- 1%
 Line Regulation..... +/-1%
 Short Circuit Protection type..... Shutdown Output Voltage,
 Re-power On to Recover
 Withstand voltage..... I/P-O/P:1.5 KVAC,
 I/P-FG:1.5 KVAC,
 O/P-FG:0.5 KVAC,
 Working Temperature..... 10 to 60° C
 Relative humidity..... 20-95% RH Nonconducting
 Temperature Co-efficient..... +/-0.03% / °C

Model No.	Output Voltage	Output Current	Rated Power
LESA75D24	24V	3A	75W
LESA120D24	24V	5A	120W
LESA240D24	24V	10A	240W

12-25W SINGLE OUTPUT SERIES



- Overload & Short circuit protection
- 100% Full Load Burn-in Test
- High Efficiency
- Low Ripple & Noise
- High Quality & Reliability
- Full Warranty
- Size : 86 x 58 x 32 (mm)

AC input voltage & Frequency range..... 100V~264VAC / 50 Hz
 Leakage current..... <1.9 mA at 240V ac
 Efficiency..... >80%
 Load Regulation..... +/- 1%
 Line Regulation..... +/-1%
 Short Circuit Protection type..... Shutdown Output Voltage,
 Re-power On to Recover
 Withstand voltage..... I/P-O/P:1.5 KVAC,
 I/P-FG:1.5 KVAC,
 O/P-FG:0.5 KVAC,
 Working Temperature..... 10 to 60° C
 Relative humidity..... 20-95% RH Nonconducting
 Temperature Co-efficient..... +/-0.03% / °C

Model No.	Output Voltage	Output Current	Rated Power
LESA15P5	5V	3A	15W
LESA12P12	12V	1.1A	12W
LESA15P24	24V	0.7A	15W
LESA25P24	24V	1.1A	25W
LESA15P12	12V	1.3A	15W

35-100W SINGLE OUTPUT SERIES



- Overload & Short circuit protection
- 100% Full Load Burn-in Test
- High Efficiency
- Low Ripple & Noise
- High Quality & Reliability
- Full Warranty
- Size : 130 x 98 x 40 (mm)

AC input voltage & Frequency range..... 100V~264VAC / 50 Hz
 180V~264VAC / 50 Hz
 (for LE-A-12-045)
 Leakage current..... <3 mA at 240V ac
 Efficiency..... >72~75%
 Load Regulation..... +/- 1%
 Line Regulation..... +/-1%
 Short Circuit Protection type..... Shutdown Output Voltage,
 Re-power On to Recover
 Withstand voltage..... I/P-O/P:1.5 KVAC,
 I/P-FG:1.5 KVAC,
 O/P-FG:0.5 KVAC,
 Working Temperature..... 10 to 60° C
 Relative humidity..... 20-95% RH Nonconducting
 Temperature Co-efficient..... +/-0.03% / °C

Model No.	Output Voltage	Output Current	Rated Power
LESA35P12	12V	3A	35W
LESA60P12	12V	5A	60W
LESA60P24	24V	2.5A	60W

25W & 100W SINGLE OUTPUT SERIES



- Overload & Short circuit protection
- 100% Full Load Burn-in Test
- High Efficiency
- Low Ripple & Noise
- High Quality & Reliability
- Full Warranty
- Size : 160 x 98 x 40 (mm)

AC input voltage & Frequency range..... 110V / 230V AC (Selectable Switch)
 180V~264VAC / 50 Hz
 (for LE-A-5-05)
 Leakage current..... <3 mA at 240V ac
 Efficiency..... >70~75%
 Load Regulation..... +/- 1%
 Line Regulation..... +/-1%
 Short Circuit Protection type..... Shutdown Output Voltage,
 Re-power On to Recover
 Withstand voltage..... I/P-O/P:1.5 KVAC,
 I/P-FG:1.5 KVAC,
 O/P-FG:0.5 KVAC,
 Working Temperature..... 10 to 60° C
 Relative humidity..... 20-95% RH Nonconducting
 Temperature Co-efficient..... +/-0.03% / °C

Model No.	Output Voltage	Output Current	Rated Power
LESC25P5	5V	5A	25W
LESA100P24C	24V	4.5A	100W
LESA100P12	12V	8.5A	100W

120-150W SINGLE OUTPUT SERIES



- Overload & Short circuit protection
- 100% Full Load Burn-in Test
- High Efficiency
- Low Ripple & Noise
- High Quality & Reliability
- Full Warranty
- Size : 199 x 98 x 40 (mm)

AC input voltage & Frequency range..... 180V~264VAC / 50 Hz
 110V / 230V AC (Selectable
 for LE-A-24-0625)
 Leakage current..... <3 mA at 240V ac
 Efficiency..... >70~75%
 Load Regulation..... +/- 1%
 Line Regulation..... +/-1%
 Short Circuit Protection type..... Shutdown Output Voltage,
 Re-power On to Recover
 Withstand voltage..... I/P-O/P:1.5 KVAC,
 I/P-FG:1.5 KVAC,
 O/P-FG:0.5 KVAC,
 Working Temperature..... 10 to 60° C
 Relative humidity..... 20-95% RH Nonconducting
 Temperature Co-efficient..... +/-0.03% / °C

Model No.	Output Voltage	Output Current	Rated Power
LESA150P24	24V	6.25A	150W

240-350W SINGLE OUTPUT SERIES



- Overload & Short circuit protection
- 100% Full Load Burn-in Test
- High Efficiency
- Low Ripple & Noise
- High Quality & Reliability
- Full Warranty
- Size : 215 x 114 x 48 (mm)

AC input voltage & Frequency range.....	150V~264VAC / 50 Hz 180V~264VAC / 50 Hz (for LE-A-24-15, LE-A-48-05)
Leakage current.....	<2 mA at 240V ac
Efficiency.....	>70%
Load Regulation.....	+/- 1%
Line Regulation.....	+/- 1%
Short Circuit Protection type.....	Shutdown Output Voltage, Re-power On to Recover
Withstand voltage.....	I/P-O/P:1.5 KVAC, I/P-FG:1.5 KVAC, O/P-FG:0.5 KVAC,
Working Temperature.....	10 to 60° C
Relative humidity.....	20-95% RH Nonconducting
Temperature Co-efficient.....	+/-0.03% / °C

Model No.	Output Voltage	Output Current	Rated Power
LESC120P12	12V	10A	120W
LESC150P12	12V	12A	150W
LESC240P24C	24V	10A	240W
LESC290P24	24V	12A	290W
LESA350P24	24V	14.6A	350W
LESC240P48	48V	5A	240W

480W SINGLE OUTPUT SERIES



- Overload & Short circuit protection
- 100% Full Load Burn-in Test
- High Efficiency
- Low Ripple & Noise
- High Quality & Reliability
- Full Warranty
- Size : 241 x 124 x 65 (mm)

AC input voltage & Frequency range.....	180V~240VAC / 50 Hz
Leakage current.....	<3.5 mA at 240V ac
Efficiency.....	>70~75%
Load Regulation.....	+/- 1%
Line Regulation.....	+/-1%
Short Circuit Protection type.....	Shutdown Output Voltage, Re-power On to Recover
Withstand voltage.....	I/P-O/P:1.5 KVAC, I/P-FG:1.5 KVAC, O/P-FG:0.5 KVAC,
Working Temperature.....	10 to 60° C
Relative humidity.....	20-95% RH Nonconducting
Temperature Co-efficient.....	+/-0.03% / °C

Model No.	Output Voltage	Output Current	Rated Power
LESA480P24	24V	20A	480W
LESA480P48	48V	10A	480W

55W DUAL OUTPUT SERIES



- Overload & Short circuit protection
- 100% Full Load Burn-in Test
- High Efficiency
- Low Ripple & Noise
- High Quality & Reliability
- Full Warranty
- Size : 160 x 98 x 40 (mm)

AC input voltage & Frequency range.....	180V~264VAC / 50 Hz
Leakage current.....	<3 mA at 240V ac
Efficiency.....	>70%
Load Regulation.....	+/- 1%
Line Regulation.....	+/-1%
Short Circuit Protection type.....	Shutdown Output Voltage, Re-power On to Recover
Withstand voltage.....	I/P-O/P:1.5 KVAC, I/P-FG:1.5 KVAC, O/P-FG:0.5 KVAC,
Working Temperature.....	10 to 60° C
Relative humidity.....	20-95% RH Nonconducting
Temperature Co-efficient.....	+/-0.03% / °C

Model No.	CHANNEL-1		CHANNEL-2		Rated Power
	Output		Output		
	Voltage	Current	Voltage	Current	
LEDA55PA	12V	3A	5V	4A	55W
LEDA55PB	24V	2A	5V	3A	55W

125W DUAL OUTPUT SERIES



- Overload & Short circuit protection
- 100% Full Load Burn-in Test
- High Efficiency
- Low Ripple & Noise
- High Quality & Reliability
- Full Warranty
- Size : 199 x 98 x 40 (mm)

AC input voltage & Frequency range.....	180V~264VAC / 50 Hz
Leakage current.....	<3 mA at 240V ac
Efficiency.....	>70%
Load Regulation.....	+/- 1%
Line Regulation.....	+/-1%
Short Circuit Protection type.....	Shutdown Output Voltage, Re-power On to Recover
Withstand voltage.....	I/P-O/P:1.5 KVAC, I/P-FG:1.5 KVAC, O/P-FG:0.5 KVAC,
Working Temperature.....	10 to 60° C
Relative humidity.....	20-95% RH Nonconducting
Temperature Co-efficient.....	+/-0.03% / °C

Model No.	CHANNEL-1		CHANNEL-2		Rated Power
	Output		Output		
	Voltage	Current	Voltage	Current	
LEDA125PC	24V	3.7A	12V	3.7A	125W

MULTI OUTPUT SERIES



- Overload & Short circuit protection
- 100% Full Load Burn-in Test
- High Efficiency
- Low Ripple & Noise
- High Quality & Reliability
- Full Warranty
- Size : 160 x 98 x 40 (mm)

AC input voltage & Frequency range..... 100V~264VAC / 50 Hz
 Leakage current..... <3 mA at 240V ac
 Efficiency..... >70%
 Load Regulation..... +/- 1%
 Line Regulation..... +/-1%
 Short Circuit Protection type..... Shutdown Output Voltage, Re-power On to Recover
 Withstand voltage..... I/P-O/P:1.5 KVAC, I/P-FG:1.5 KVAC, O/P-FG:0.5 KVAC,
 Working Temperature..... 10 to 60° C
 Relative humidity..... 20-95% RH Nonconducting
 Temperature Co-efficient..... +/-0.03% / °C

Model No.	CHANNEL-1		CHANNEL-2		CHANNEL-3		Rated Power
	Output		Output		Output		
	Voltage	Current	Voltage	Current	Voltage	Current	
LESA45PB	+12V	2A	-12V	0.5A	+5V	3A	45W

15-25W SINGLE OUTPUT-MODIFIED DINRAIL SERIES



- Overload & Short circuit protection
- 100% Full Load Burn-in Test
- High Efficiency
- Low Ripple & Noise
- High Quality & Reliability
- Full Warranty
- Size : 86 x 58 x 45 (mm)

AC input voltage & Frequency range..... 100V~264VAC / 50 Hz
 Leakage current..... <1.9 mA at 240V ac
 Efficiency..... >80%
 Load Regulation..... +/- 1%
 Line Regulation..... +/- 1%
 Short Circuit Protection type..... Shutdown Output Voltage, Re-power On to Recover
 Withstand voltage..... I/P-O/P:1.5 KVAC, I/P-FG:1.5 KVAC, O/P-FG:0.5 KVAC,
 Working Temperature..... 10 to 60° C
 Relative humidity..... 20-95% RH Nonconducting
 Temperature Co-efficient..... +/-0.03% / °C

Model No.	Output Voltage	Output Current	Rated Power
LESA15B5	5V	3A	15W
LESA12B12	12V	1.1A	15W
LESA15B24	24V	0.7A	15W
LESA25B24	24V	1.1A	25W
LESA15B12	12V	1.3A	15W

35-60W SINGLE OUTPUT-MODIFIED DINRAIL SERIES



- Overload & Short circuit protection
- 100% Full Load Burn-in Test
- High Efficiency
- Low Ripple & Noise
- High Quality & Reliability
- Full Warranty
- Size : 150 x 98 x 40 (mm)

AC input voltage & Frequency range..... 100V~264VAC / 50 Hz
 180V~264VAC / 50 Hz (for LE-E-12-045)
 Leakage current..... <3 mA at 240V ac
 Efficiency..... >72~75%
 Load Regulation..... +/- 1%
 Line Regulation..... +/-1%
 Short Circuit Protection type..... Shutdown Output Voltage, Re-power On to Recover
 Withstand voltage..... I/P-O/P:1.5 KVAC, I/P-FG:1.5 KVAC, O/P-FG:0.5 KVAC,
 Working Temperature..... 10 to 60° C
 Relative humidity..... 20-95% RH Nonconducting
 Temperature Co-efficient..... +/-0.03% / °C

Model No.	Output Voltage	Output Current	Rated Power
LESA35B12	12V	3A	35W
LESA60B12	12V	5A	60W
LESA60B24	24V	2.5A	60W

25W & 100W SINGLE OUTPUT-MODIFIED DINRAIL SERIES



- Overload & Short circuit protection
- 100% Full Load Burn-in Test
- High Efficiency
- Low Ripple & Noise
- High Quality & Reliability
- Full Warranty
- Size : 180 x 98 x 40 (mm)

AC input voltage & Frequency range..... 110V / 230V AC (Selectable Switch)
 180V~264VAC / 50 Hz (for LE-E-5-05)
 Leakage current..... <3 mA at 240V ac
 Efficiency..... >70~75%
 Load Regulation..... +/- 1%
 Line Regulation..... +/-1%
 Short Circuit Protection type..... Shutdown Output Voltage, Re-power On to Recover
 Withstand voltage..... I/P-O/P:1.5 KVAC, I/P-FG:1.5 KVAC, O/P-FG:0.5 KVAC,
 Working Temperature..... 10 to 60° C
 Relative humidity..... 20-95% RH Nonconducting
 Temperature Co-efficient..... +/-0.03% / °C

Model No.	Output Voltage	Output Current	Rated Power
LESC25B5	5V	5A	25W
LESA100B24C	24V	4.5A	100W
LESA100P12	12V	8.5A	100W

120-150W SINGLE OUTPUT-MODIFIED DINRAIL SERIES



- Overload & Short circuit protection
- 100% Full Load Burn-in Test
- High Efficiency
- Low Ripple & Noise
- High Quality & Reliability
- Full Warranty
- Size : 220 x 98 x 40 (mm)

AC input voltage & Frequency range..... 180V~264VAC / 50 Hz
 110V / 230V AC (Selectable for LE-E-24-0625)
 Leakage current..... <3 mA at 240V ac
 Efficiency..... >70~75%
 Load Regulation..... +/- 1%
 Line Regulation..... +/-1%
 Short Circuit Protection type..... Shutdown Output Voltage, Re-power On to Recover
 Withstand voltage..... I/P-O/P:1.5 KVAC, I/P-FG:1.5 KVAC, O/P-FG:0.5 KVAC,
 Working Temperature..... 10 to 60° C
 Relative humidity..... 20-95% RH Nonconducting
 Temperature Co-efficient..... +/-0.03% / °C

Model No.	Output Voltage	Output Current	Rated Power
LESA150B24	24V	6.25A	150W

55W DUAL OUTPUT-MODIFIED DINRAIL SERIES



- Overload & Short circuit protection
- 100% Full Load Burn-in Test
- High Efficiency
- Low Ripple & Noise
- High Quality & Reliability
- Full Warranty
- Size : 180 x 98 x 40 (mm)

AC input voltage & Frequency range..... 180V~264VAC / 50 Hz
 Leakage current..... <3 mA at 240V ac
 Efficiency..... >70~75%
 Load Regulation..... +/- 1%
 Line Regulation..... +/-1%
 Short Circuit Protection type..... Shutdown Output Voltage, Re-power On to Recover
 Withstand voltage..... I/P-O/P:1.5 KVAC, I/P-FG:1.5 KVAC, O/P-FG:0.5 KVAC,
 Working Temperature..... 10 to 60° C
 Relative humidity..... 20-95% RH Nonconducting
 Temperature Co-efficient..... +/-0.03% / °C

Model No.	CHANNEL-1		CHANNEL-2		Rated Power
	Output		Output		
	Voltage	Current	Voltage	Current	
LEDA55BA	12V	3A	5V	4A	55W
LEDA55BB	24V	2A	5V	3A	55W

125W DUAL OUTPUT-MODIFIED DINRAIL SERIES



- Overload & Short circuit protection
- 100% Full Load Burn-in Test
- High Efficiency
- Low Ripple & Noise
- High Quality & Reliability
- Full Warranty
- Size : 220 x 98 x 40 (mm)

AC input voltage & Frequency range..... 180V~264VAC / 50 Hz
 Leakage current..... <3 mA at 240V ac
 Efficiency..... >70%
 Load Regulation..... +/- 1%
 Line Regulation..... +/-1%
 Short Circuit Protection type..... Shutdown Output Voltage, Re-power On to Recover
 Withstand voltage..... I/P-O/P:1.5 KVAC, I/P-FG:1.5 KVAC, O/P-FG:0.5 KVAC,
 Working Temperature..... 10 to 60° C
 Relative humidity..... 20-95% RH Nonconducting
 Temperature Co-efficient..... +/-0.03% / °C

Model No.	CHANNEL-1		CHANNEL-2		Rated Power
	Output		Output		
	Voltage	Current	Voltage	Current	
LEDA125BC	24V	3.7A	12V	3.7A	125W

MULTI OUTPUT-MODIFIED DINRAIL SERIES

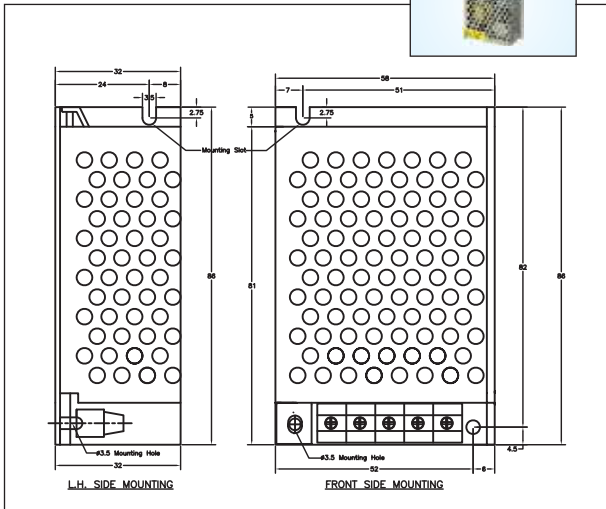


- Overload & Short circuit protection
- 100% Full Load Burn-in Test
- High Efficiency
- Low Ripple & Noise
- High Quality & Reliability
- Full Warranty
- Size : 180 x 98 x 40 (mm)

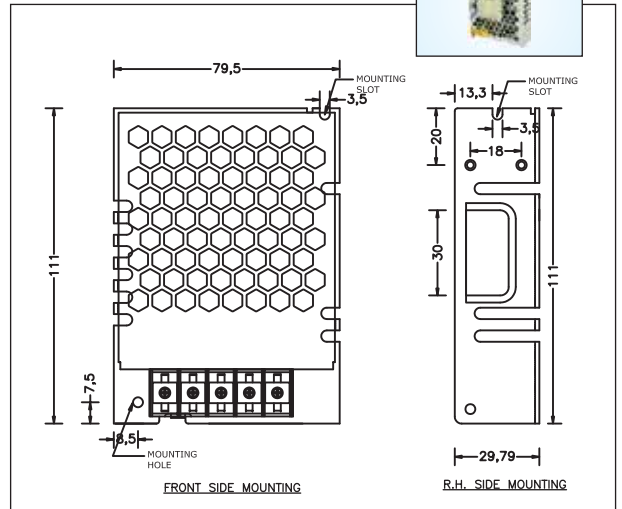
AC input voltage & Frequency range..... 100V~264VAC / 50 Hz
 Leakage current..... <3 mA at 240V ac
 Efficiency..... >70%
 Load Regulation..... +/- 1%
 Line Regulation..... +/-1%
 Short Circuit Protection type..... Shutdown Output Voltage, Re-power On to Recover
 Withstand voltage..... I/P-O/P:1.5 KVAC, I/P-FG:1.5 KVAC, O/P-FG:0.5 KVAC,
 Working Temperature..... 10 to 60° C
 Relative humidity..... 20-95% RH Nonconducting
 Temperature Co-efficient..... +/-0.03% / °C

Model No.	CHANNEL-1		CHANNEL-2		CHANNEL-3		Rated Power
	Output		Output		Output		
	Voltage	Current	Voltage	Current	Voltage	Current	
LETA45BB	+12V	2A	-12V	0.5A	+5V	3A	45W

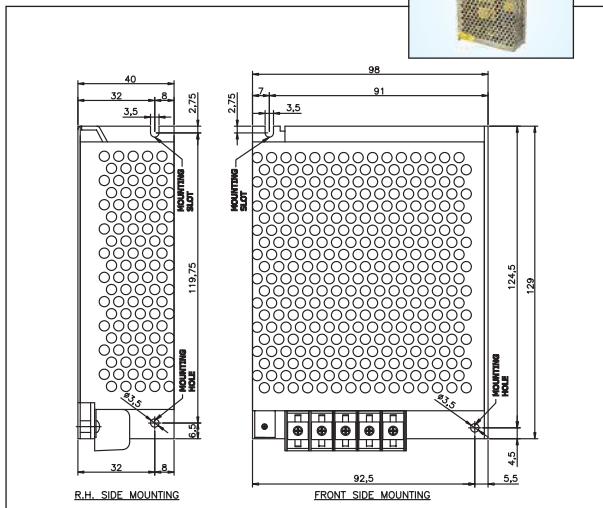
Size : 86 x 58 x 32 mm



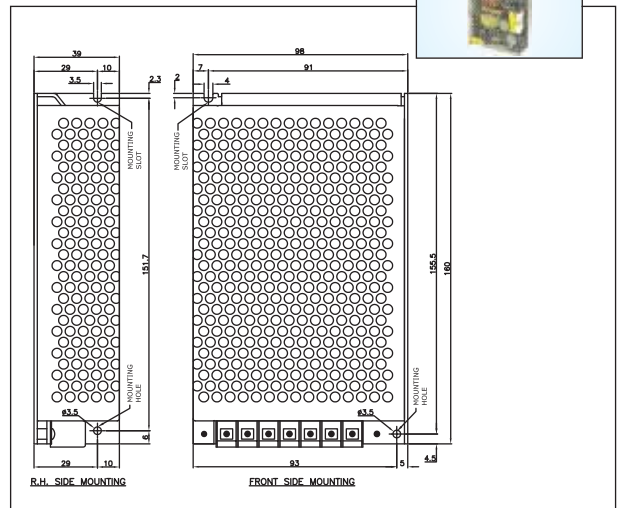
Size : 99 x 97 x 35 mm



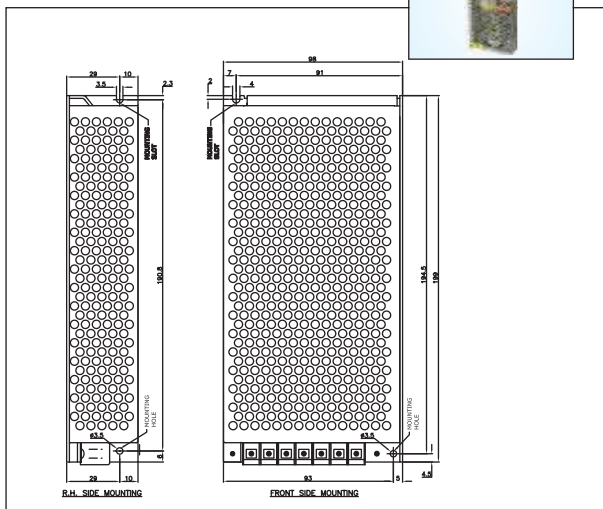
Size : 130 x 98 x 40 mm



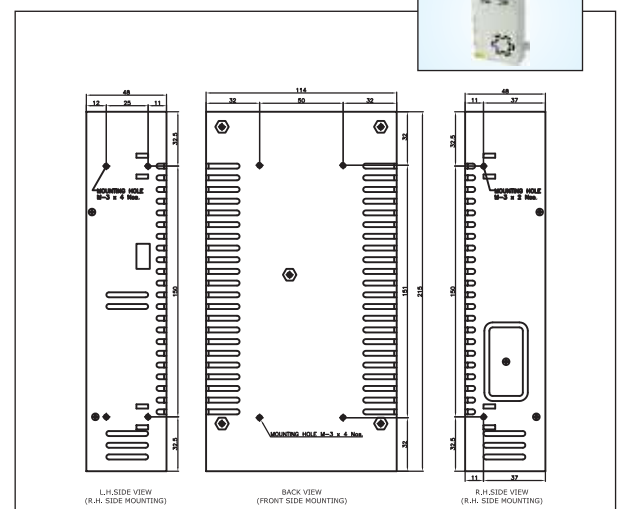
Size : 160 x 98 x 40 mm



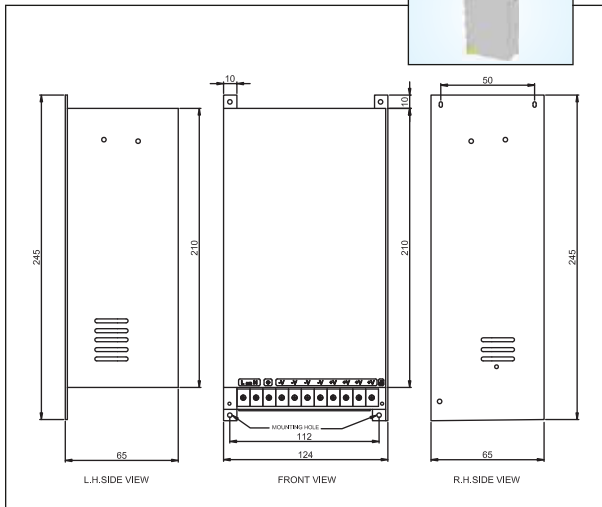
Size : 199 x 98 x 40 mm



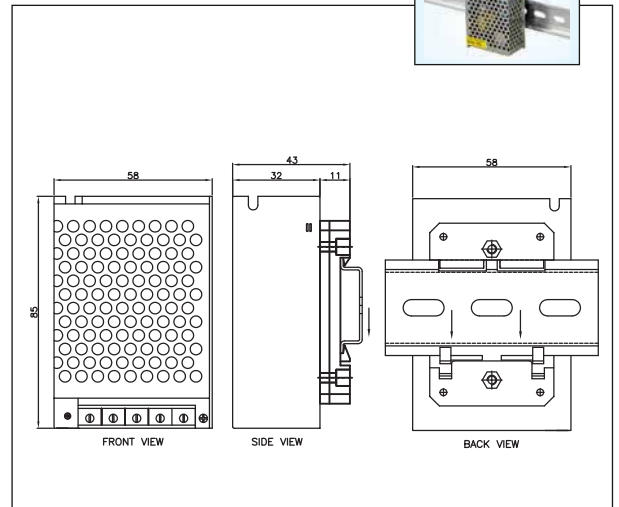
Size : 215 x 114 x 48 mm



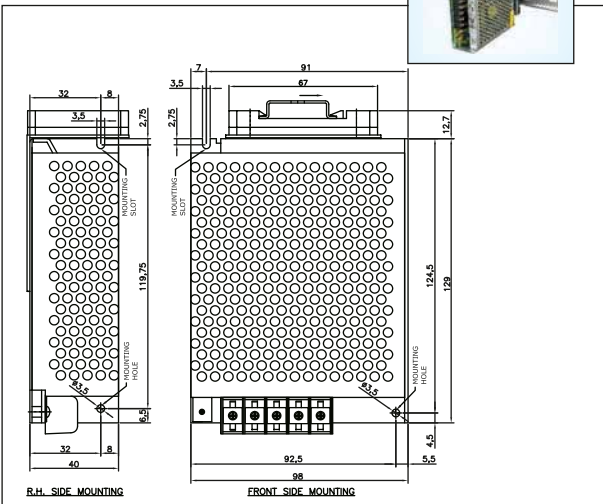
Size : 241 x 124 x 65 mm



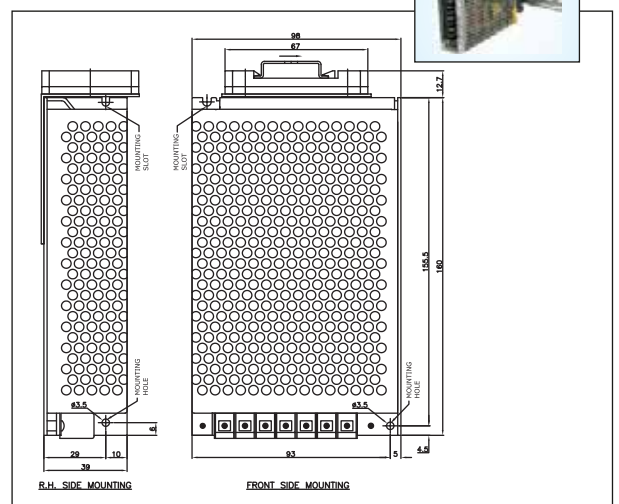
Size : 86 x 58 x 45 mm



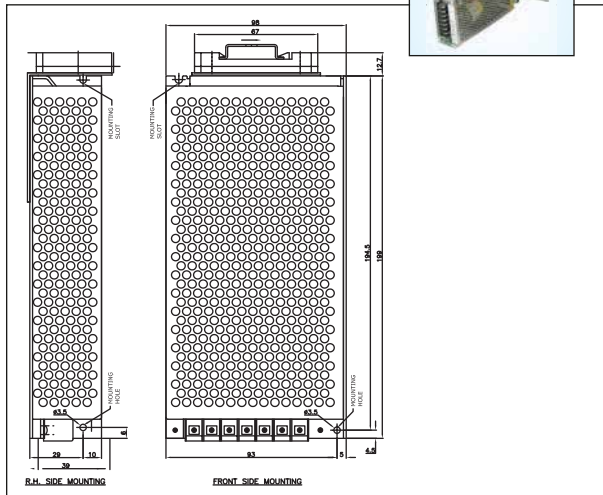
Size : 150 x 98 x 40 mm



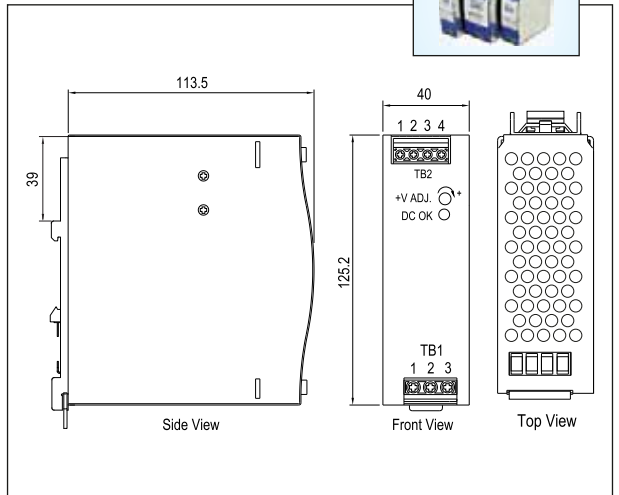
Size : 180 x 98 x 40 mm



Size : 220 x 98 x 40 mm



Size : 125 x 40 x 115 mm





Lubi Electronics

Sardar Patel Ring Road, Nr. Karai Gam Patia, Nana Chiloda, Dist. : Gandhinagar - 382 330.

Tel. : +91-79-3984 5300 Fax : +91-79-3984 5599 E-mail : info@lubielectronics.com Website : www.lubielectronics.com

BRANCH OFFICE

VAPI

104-A, Platinum Mall, Plot No. Cm/13, Opp. V.I.A. Ground, G.I.D.C. Vapi - 396 195. District : Valsad, Gujarat. INDIA
Tel. : + 91 - 260 - 2425 307

MORBI

Shop no : 4 & 5, Aarohi chamber, Nr. GSPC office, Opp. Adarsh Hotel, 8-A N.H., Trajpar, Morbi - 363 642.
Tel. : 02822 - 244 890

MUMBAI

405, Sangeet Plaza, Opp. Marol Fire Brigade, Marol Maroshi Road, Andheri (E), MUMBAI - 400 059.
Tel. : + 91 - 22 - 6704 2570 / 2925 7315

PUNE

Breman Business Center, Off. No.301, Nr. City International School, Opp. Breman Square, University Road, Aundh Pune - 411 007.
Tel. : + 91 - 20 - 2588 0583 / 2025 1162

DELHI

202, 2th Floor, Ajit Singh House, 12, Commercial Complex, Yusuf Sarai, New Delhi. 110 049.
Tel. : + 91-11-4608 5120

BANGALORE

"Sri Chakra" #30/25/1, 1st Floor, New Ring Road, Malagala, 2nd Stage, Nagarabavi, Bangalore-560072, Karnataka.

LUDHIANA

BXX1/14436, Nr. Dada Motors, Besides HDFC Bank, Kalsinagar, G.T.Road, Ludhiana - 141 003.
Tel. : + 91 - 161 - 2535 342

CHENNAI

#3, 1st Floor, Vishalakshi Street, Balavinayagar Nagar, Arumbakkam, Chennai - 600 106.
Tel. : + 91 - 44 - 6459 8855 • Fax : + 91 - 44 - 4355 6630

COIMBATORE

SF 489/2 Thiru Nagar 3rd Street, Selvapuram By-Pass Road, Coimbatore - 641026.
Tel. : + 91-422-6555 886 Service No. : +91 - 422 - 2340 111

HYDERABAD

Shed No. - 21, Phase - 1, TCIE, Balanagar, Hyderabad - 500 037.
Tel. : + 91 - 40 - 4007 3424 • Fax : + 91 - 40 - 4007 3214