

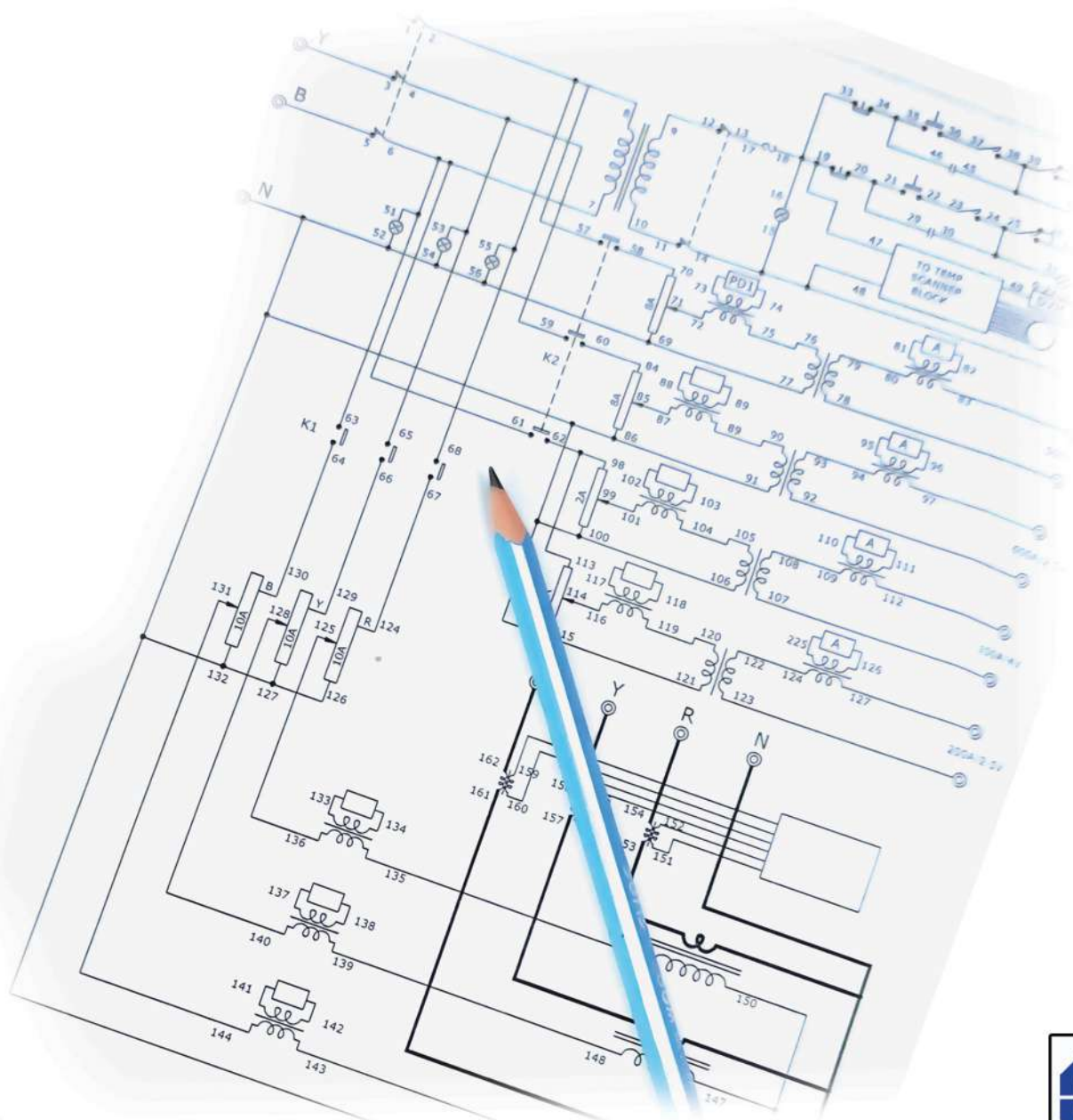


NEO TELE-TRONIX PVT. LTD.

Makers of Electrical Test & Measuring Equipment



One Stop Solution For Electrical Testing Needs....



Always Innovative....



Find Us On :   

....Our Wide Product Range for Transformer Testing I

- AC High Voltage Test Set
- AC High Voltage (BDV) Test Set upto 5KV
- AC & DC Combined Test Set with /without Impulse
- HV Impulse Generator Test Set
- Load & No Load Test Bench (with/without Power Analyzer)
- Oil Breakdown Voltage (BDV) Test Set
- Transformer Turns Ratio Meter
- Transformer Winding Resistance Meter
- Partial Discharge Test Set
- Capacitance & Tan Delta Test Set
- Oil Resistivity & Tan -Delta Test Set
- Induced Over Voltage/DFDV/HFDV Test Set



....Our Wide Product Range for Cable Testing I

- High Voltage Impulse Generator
- AC/DC High Voltage Test Set
- Partial Discharge Test Set
- Capacitance & Tan-Delta Test Set
- Load Cycle Test Set (With Automation)
- AC High Voltage Spark Tester
- Under Ground Cable Fault Locator
- Thyristor Thumper (Surge Generator)
- DC HV Proof Tester
- AC High Voltage Test Set (Series Resonance Type)



Instead of supplying just the equipment, NTPL believes in providing turnkey solutions and can also provide customised engineered solutions

....Our Product Range for Switchgear Testing I

- Primary Current Injection Set
- Relay Test Set/Secondary Current Injection Set
- DC Vacuum Bottle Test Set
- Micro Ohm Meter
- Milli Volt Drop Test Set
- DC High Current Low Voltage Set
- Time Interval Meter (1 & 3 Channel)
- Circuit Breaker Time Analyzer
- Phase shifter
- Polarity Tester
- AC/DC High Voltage Test Set
- HV Impulse Test Set



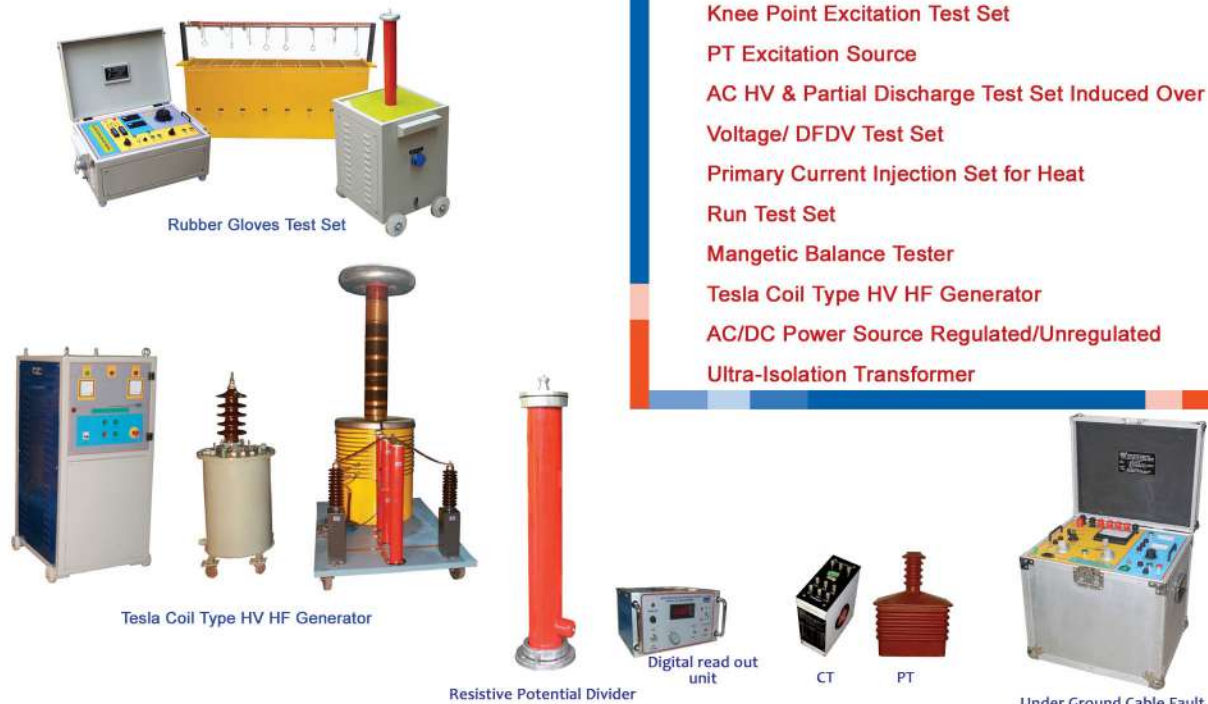
....Our Product Range for Motor & Generator Testing

- AC High Voltage Test Set
- HV Surge Comparison Test Set
- Micro Ohm Meter
- Capacitance & Tan- Delta Test Set
- Milli Volt Drop Test Set
- DC High Current Low Voltage Set Motor Test Bench For No Load Test

We also manufacture equipment according to specific requirements of the customers.

....Our Product Range for Various Testing !

- Rubber Gloves Test Set
- Different Electrodes & HV Test Jig
- HV Potential Divider (R/C)
- Standard Instrument Transformer (C T&PT)
- Knee Point Excitation Test Set
- PT Excitation Source
- AC HV & Partial Discharge Test Set Induced Over Voltage/ DFDV Test Set
- Primary Current Injection Set for Heat Run Test Set
- Magnetic Balance Tester
- Tesla Coil Type HV HF Generator
- AC/DC Power Source Regulated/Unregulated
- Ultra-Isolation Transformer



Instead of supplying just the equipment, NTPL believes in providing turnkey solutions and can also provide customised engineered solutions

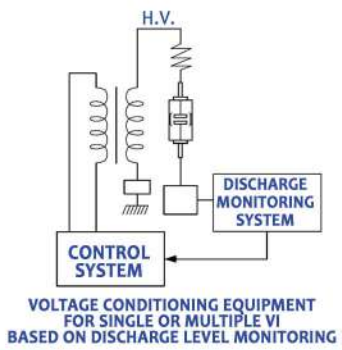
....Our Wide Product Range for Vacuum Interrupter !



- Input voltage : 230V, 1 phase, 50Hz. AC.
- Maximum Impulse Voltage : 300KV Peak.
- Power/Stored energy : 7.5KJ at max. voltage.
- No. of stages : 3
- Nature of Impulse Wave : 1.2/50 μ Sec.
- Accuracy Rise Time/Fail time: \pm 30%/ \pm 20%
- Polarity : Positive & Negative-selectable.
- Mode of operation: Automated Programmable as well as manual (selectable).
- Programmable features to check endurance of VI.

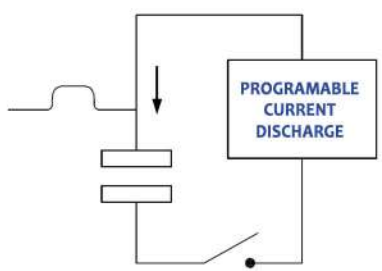
300KV/7.5KJ
High Voltage Programmable Lightning Impulse Voltage Tester For Vacuum Interrupters
TYPE: IMGNT-VIPRG-300K7.5KJ

VOLTAGE CONDITIONING EQUIPMENT FOR SINGLE OR MULTIPLE VI



VOLTAGE CONDITIONING EQUIPMENT FOR SINGLE OR MULTIPLE VI BASED ON DISCHARGE LEVEL MONITORING

CURRENT CONDITIONING EQUIPMENT FOR VI



CURRENT CONDITIONING EQUIPMENT

The test system consists of : Mechanical arrangement/mechanism, Power supply modules, Contact Box, PLC based Control unit.

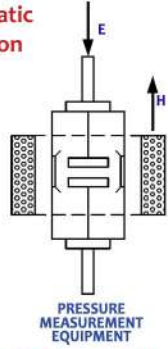
Test arrangement designed with proper ergonomic considerations with following features:

- Vertical placement of VI, Barcode scanning for automatic selection of test recipe, Automatic Sequential operation according to selected recipe, CRM, Continuity Test (24V DC), Highly stable magnetic field with current/field indication, Steady electric field with voltage indication.

Measurement of Discharge Current, Measurement of Vacuum level from preloaded calibration curve.

An additional HV test in the event of non-ignition.

Automatic daily function test of the system with calibrated resistance. Renewed internal pressure measurement of the same production, Data acquisition to external server, Operator's safety interlocks.



PRESSURE MEASUREMENT EQUIPMENT



Internal pressure & CRM system for vacuum interrupters (VI) Set



Pasable VI Tester for field Application

- Input Voltage : 230V \pm 10%, 50Hz \pm 5%, 1 Phase AC
- Output Voltage : Continuously variable from 0 to 60 KV DC.
- Max. Output Current : 2.5mA max. at HT side.
- Leakage current Limit : Pre-settable from 0.2 to 2mA for GO/NO-GO testing.
- Duty : Intermittent duty cycle, i.e., 5 mins ON, 10 mins OFF.
- Transient Protection : 2.5mA (Instantaneous trip through fast acting DC relay)
- Output Ripple voltage : <3% at no load.
- Metering : LCD display
- Adequate Safety Interlock & Protection.

Note: Above set available upto 75KV DC

NEO TELE-TRONIX PRIVATE LIMITED

Reg. Office : 6/7 Bijoygarh, Kolkata - 700 032
 Works : 97(Formerly 117), Mishrapara Road, Rathtala, P.O. -Rajpur, Kolkata - 700 149, West Bengal, India
 Phone : +91 9831927749, 9830091012, + 91 9748155800 (Open : 10.00AM to 6.00 PM all days except Sundays & Statutory Holidays)
 e-mail : ntplindia@gmail.com
 Website : www.ntplindia.com

