



### WHO WE ARE, WHAT WE DO ?

Universal Packaging, established since 1983, are manufacturers of CFL & LED Plastic Components, Injection Molded Plastic Components and packaging products for the lighting industry. The company is strategically located in Mumbai to cater to a host of companies based all over India. The manufacturing facility boasts of latest and hi-tech machinery and equipments to manufacture OEM parts for globally reputed companies. The company primarily caters to the packaging and molding needs of the Electrical & Lighting Industry.

### OUR PRODUCTS



**MSME**  
MICRO, SMALL & MEDIUM ENTERPRISES  
सूक्ष्म, लघु एवं मध्यम उद्यम  
OUR STRENGTH • हमारी शक्ति

Ministry of MSME, Govt. of India



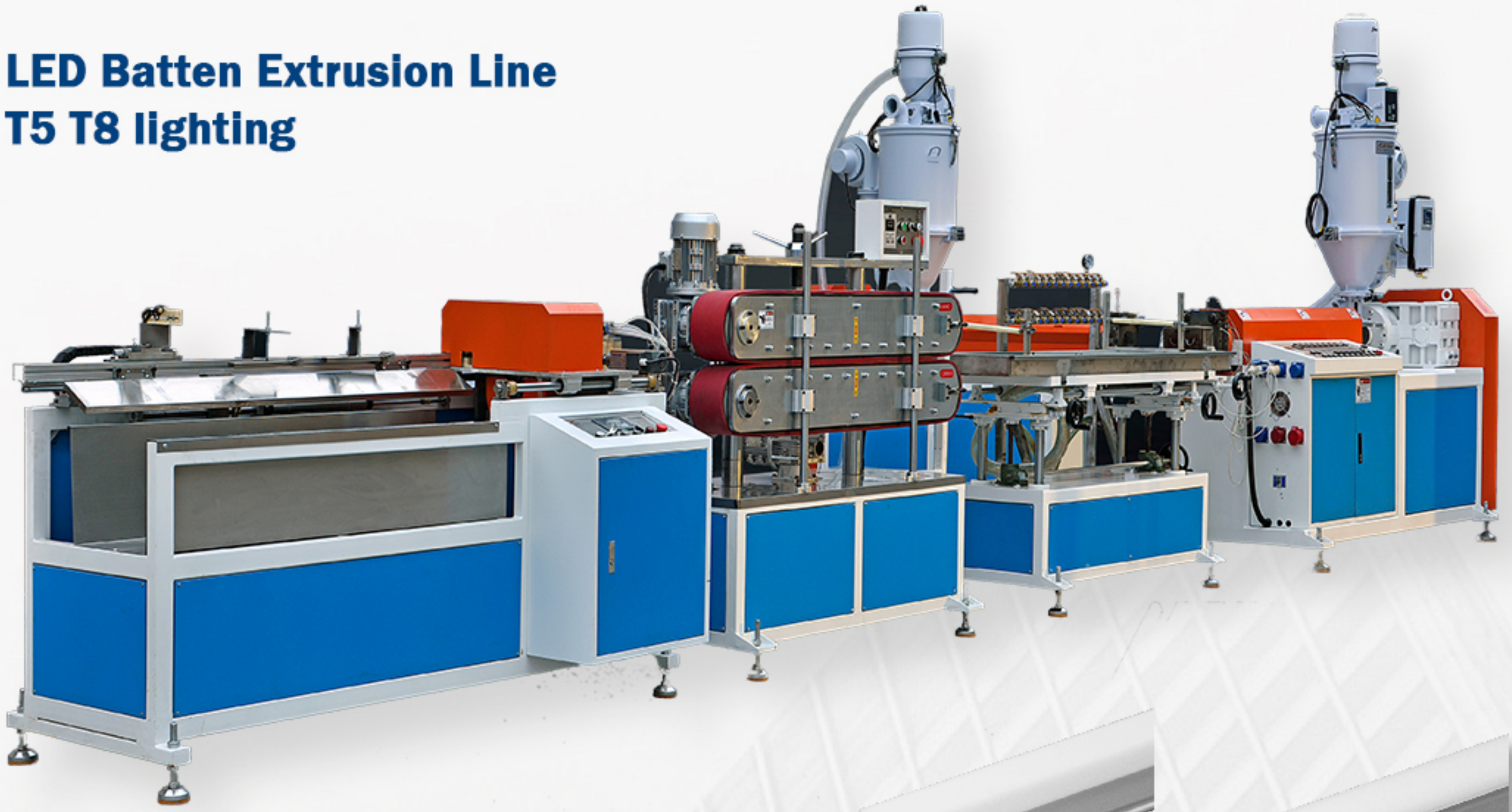
[www.universalpackaging.co.in](http://www.universalpackaging.co.in)

T: +91 98198 222 62 E: [universalpackaging@hotmail.com](mailto:universalpackaging@hotmail.com)

E-5 Hatkesh Udyog Nagar, Kashimira Bhayander Road, Mira Road (E), Thane - 401104



**LED Batten Extrusion Line  
T5 T8 lighting**



**Polycarbonate Co-Extrusion Machine  
Customised cutting - 1ft, 2ft and 4ft**



**Injection Moulding Machine**



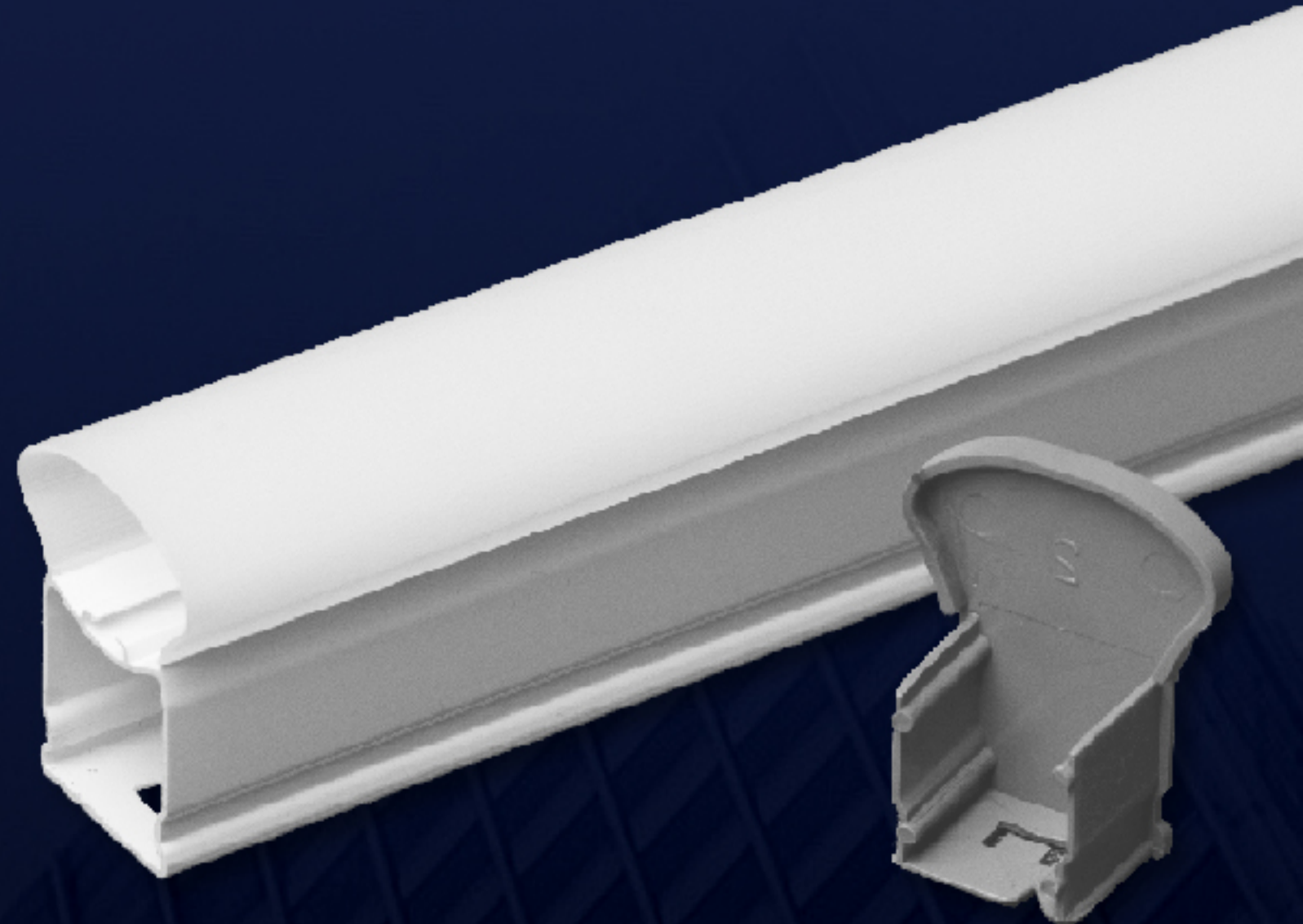
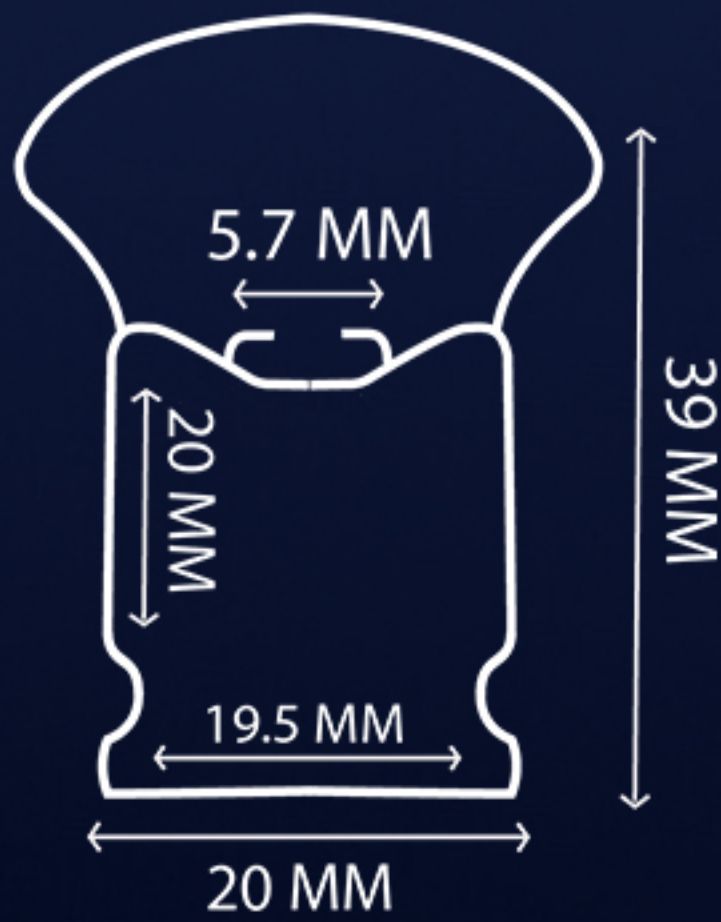
**Injection moulding machine:  
Machine Tonnage - 80T, 100T  
Tie Bar Distance - 420mm x 420mm  
Plasticising capacity - 208grams (GPPS)**





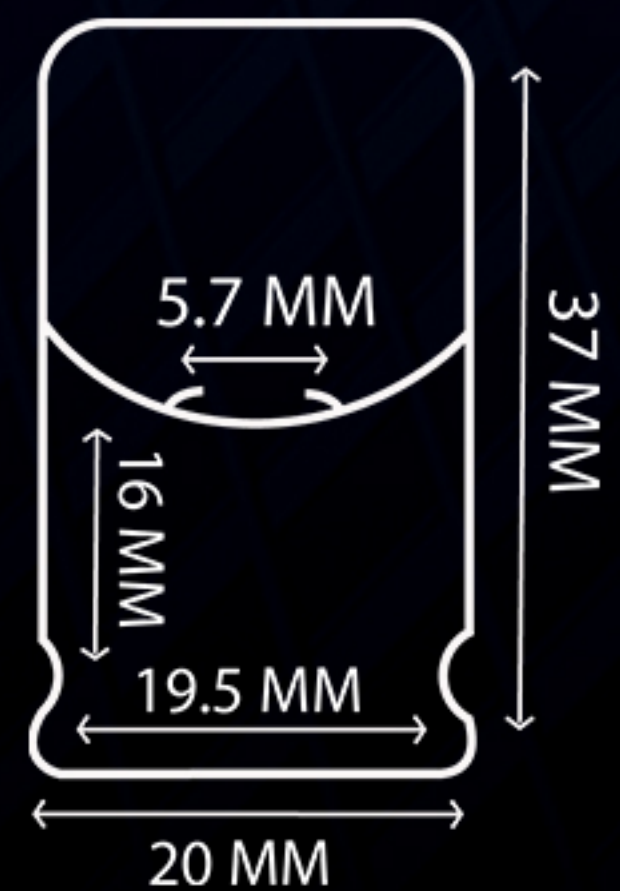
# LED BATTENS (CO-EXTRUSION) T5 T8 LIGHTING

## MUSHROOM BATTEN



<b>SIZE</b>	<b>20 X 39 MM</b>
<b>PCB SLOT</b>	<b>6 MM &amp; 9 MM</b>
<b>DRIVER SLOT</b>	<b>19 X 20 MM</b>

## SQAURE BATTEN



<b>SIZE</b>	<b>20 X 37 MM</b>
<b>PCB SLOT</b>	<b>6 MM</b>
<b>DRIVER SLOT</b>	<b>19.5 X 16 MM</b>

\* Basic price for a 4ft batten of 120grams



## **PLASTIC INJECTION MOULDING LED & CFL LIGHTING**

### **LED BULB PLASTIC HOUSING**

**We manufacture and supply high quality housings used in LED Bulbs. Following are the features:**

**Plastic Coated Aluminium body for superior heat dissipation**

**Glossy Surface Finish for high quality pad printing or laser printing of brand name  
Size: A57**

**Supplied with heat sink to mount the led mounted MCPCB**

**Diffuser made from high quality Polycarbonate to achieve a Lumen efficiency of more than 87%**



*\*Basic price includes PBT body, Diffuser and Aluminum plate.*

### **CFL PLASTIC HOUSING**

**We manufacture and supply various sizes of CFL Plastic Components as per our clients requirement. These Components are made from highest quality material and are tested as per Industry standards. These plastic components are made from Glass Reinforced PBT (Polybutyl Teraphthalate). Sizes: 45mm, 46mm, 48mm & 54mm. The caps are offered in 4 hole or 6 hole as per the wattage requirement.**

