



SEP HOSPITAL FURNITURES

Mr. Shashank Jain

Plot Number-6, Street Number-1,

Samaspur Jagir, Pandav Nagar

Delhi-110091

Ph: 09711323883, 01122759257

Email: sep.jain@gmail.com

ICU BED ELECTRIC

(ABS PLATFORM, PANELS & SIDE RAILINGS)

MODEL NO.: SEP-F01



DESCRIPTION

- Frame work made of Rectangular M.S. Tube
- ABS Mattress platform in four sections
- Back rest, Knee rest, TB/RTB and Hi-Lo
- Positions obtained by hand remote system
- ABS molded head and foot panels
- ABS tucks away safety side railings
- Telescopic IV Rod with two locations
- Bed mounted on 125mm Dia castor with central braking system.
- Overall Size: 210L x 90W x 50-70H cms
- Finish: Epoxy powder coated

ICU BED ELECTRIC

(ABS PANELS & SIDE RAILINGS)

MODEL NO. : SEP-F02



DESCRIPTION

- Four Independent electric motors
- 2-Section Tuck away ABS Side rails with safety lock
- 3-Section perforated CRC sheet and backrest having X-Ray translucent top with cassette tray
- Removal and lockout ABS head & foot board
- Central brake system, mounted on 125mm diameter castor
- ABS corner bumper
- Drainage bag hooks
- Four I.V. Pole sockets
- I.V. Pole storage
- Chair / Flat position
- Finish: Epoxy powder coated
- Available with removable I.V. pole
- Back rest, knee rest, Trendelenburg / reverse Trendelenburg, Hi-Lo Positions

ICU BED MECHANICAL

(ABS PANELS & SIDE RAILINGS)
MODEL NO. : SEP-F03



DESCRIPTION

- Frame work made of rectangular M.S. tube
- 4 Section top made of perforated M.S. sheet
- Back and knee rest, TB/RTB and Hi-Lo positions maneuvered by separate screw from foot end
- ABS molded head and foot panels
- ABS tuck away safety side railings
- Telescopic IV rod with two locations
- Bed mounted on 125 mm Dia Castor with central braking system, epoxy powder coated
- Bed size: 210L x 90W x 60-80H cms

LOW ICU BED

MODEL NO.: SEP-F04



DESCRIPTION

- Mechanically operated, back and knee rest, Trendelenburg / reverse Trendelenburg positions by screw system
- Four sectional uniformly perforated CRCA sheet top
- Frame made of strong rectangular CRCA pipe
- ABS Bows/ S. S. bows at head and foot end
- Powder coated half length collapsible side railing, One IV Rod- height adjustable
- Four revolving corner buffers
- Four 125 mm Castors, Two with brakes
- Pre-treated and Epoxy powder coated
- Bed size: 210L x 100W x 60H cms

FLOWER BED

MODEL NO.: SEP-F05



DESCRIPTION

- Manual Operated, back and knee rest, Trundle burg/ Reverse trundle burg positions by screw system
- Four sectional uniformly perforated CRCA sheet top
- Frame made of strong rectangular CRCA pipe
- S.S. Bows with laminated panels at head and foot end
- Option for I.V. Rod, four 100 mm Castors, two with Brakes, Pre-Treated and epoxy powder coated
- Size : 210L x 92W x 60H cms



HOSPITAL FLOWER BED

(ABS PANELS & SIDE RAILINGS)

MODEL NO.: SEP-F06

DESCRIPTION

- Frame work made of rectangular M.S. tube
- 4 Section Top made of perforated M.S. sheet
- Back rest, Knee rest positions maneuvered by separate screw from foot end.
- ABS molded head and foot panels
- ABS tuck away safety side railing.
- Telescopic IV Rod with two Locations.
- Bed Mounted on 100mm Dia Castor- two with brakes
- Overall Size: 210L x 90W x 60H cms
- Finish: Epoxy powder coated



SEMI FLOWER BED

MODEL NO.: SEP-F07

DESCRIPTION

- Manual operated
- Back rest - operated by Screw System
- Two sectional uniformly perforated CRCA sheet top
- Frame made of strong rectangular CRCA pipe
- S.S. Bows with laminated panels at head and foot end
- Pre-Treated and Epoxy Powder Coated
- Size : 210L x 92W x 60H cms



PLAIN BED

MODEL NO.: SEP-F08

DESCRIPTION

- Size : 210L x 92W x 60H cms
- Detachable SS bows with panels.
- Four Flush IV rod locations
- Pretreated & Epoxy Powder Coated.

GYNECOLOGICAL EXAMINATION TABLE (3 SECTIONS)

MODEL NO.: SEP-F09

DESCRIPTION

- The Gynecological table with its exquisite detail and stunning durability can be used for both examination and delivery purposes.
- The ergonomic design provides for superior level of comfort for women.
- A mechanical ratchet helps with back and leg adjustment.
- The seat is molded into the frame with a waste tray beneath it for good measure.
- The entire frame of the chair is made of stainless steel promoting stability support, while the seat is upholstered with synthetic leather.



ELECTROMETRIC OPERATION TABLE WITH LONGITUDINAL TOP

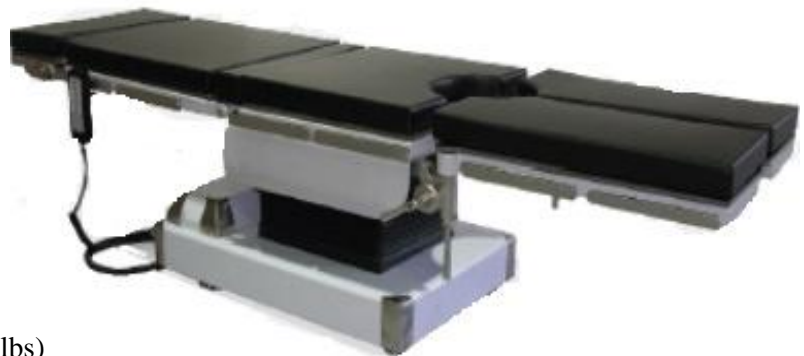
MODEL NO.: SEP-F10

DESCRIPTION

- The five section table top is X-ray translucent and is equipped with removable, antistatic 50 mm thick mattress.
- The base & column of the table is made of high quality medical stainless steel. Non-reflecting surface, antibacterial & easy to clean.
- The table equipped with long top sliding of 250 mm and in built battery backup.
- Optional - Hanging Orthopedic attachment including Pelvic Support, Tibia Nailing & Femur Nailing enables the limbs to perform strain free.
- Height Adjustment, Lateral Tilts, Trendelenburg, Flex - Reflex, Chair Position and Longitudinal Sliding top are realized by remote control.
- Head and Leg sections are detachable & interchangeable

TECHNICAL SPECIFICATION:

Top Dimension	L 2032 × W 550 mm
Height Adjustment	787- 1037 mm
Longitudinal Top	250 mm
Trendel enburg/ Reverse	30°/ 25°
Lateral Tilt	20/ 20°
Kidney Elevator	150 mm
Back Rest	80°/ 25°
Leg Rest	15°/ 90°
Head Rest	20°/ 60°
Power Supply	24V DC
Battery Backup	2-3 hours
Patient Weight Capacity	300 Kgs (666 lbs)



HYDRAULIC OPERATION THEATER TABLE SIDE END ARM

MODEL NO.: SEP-F11



DESCRIPTION

- Single action hydraulic lift
- Heavy milled steel base with fiber wheels provides stability to the entire table and has toe space and foot rails for surgeons
- Auto Floor Locking Device
- Detachable leg section and improved hydraulic system provides smooth movement and the speed of lowering the table is permanently set

ACCESSORIES

- Anesthetic frame
- Padded side Supports
- Intravenous Arm board
- Padded shoulder support
- Lithotomic leg holder with straps

'C' ARM HYDRAULIC OPERATION THEATER TABLE

MODEL NO.: SEP-F12



DESCRIPTION

- Radio translucent top in four/five section for use of C-arm image intensifier
- Compatible for orthopedic attachment
- Heavy duty smooth gear mechanism to avail all operating position
- Durable heavy duty leak proof hydraulic pump with three slides
- Eccentric top and hydraulic chamber adjusted at one side of base for maximum use of CARM Image intensifier
- Inter changeable head and leg section
- One Radio translucent hand board
- One hand rest with SS Top for transfusion



ELECTRONIC TABLE 'C'ARM COMPATIBLE WITH ORTHO ATTACHMENT

MODEL NO.: SEP-F13

DESCRIPTION

- Are same as of Above & all positions with full electric with cable remote
- Most useful for orthopaedic surgery
- Specially designed for intra operative X-RAY & C-arm image transfer
- X-Ray translucent removable pelvic rest with special arrangement for orthopaedic operation
- Padded orthopaedic knee crutches provides support to the legs of patient
- Two traction devices sliding support with ball joint allowing flexion rotation foot with traction shoes



MONITOR TROLLEY

MODEL NO.: SEP-F14

DESCRIPTION

- With 5 shelves
- Oxygen cylinder frame fitted
- Panel of 5 Switches
- Complete Epoxy Powder coated frame

MEDICAL GYNECOLOGY SURGERY ELECTRIC OPERATING TABLE FOR WOMEN CESAREAN OPERATION

MODEL NO.: SEP-F15

DESCRIPTION

- This bed is designed for obstetrics diagnosis, gynecology operation and parturition as well as for cesarean operation.
- The top of table realize the reversed Trendelenburg, Trendelenburg, up and down by electrical handspike.
- It has the characteristics of strong anti-interference, small size, convenient operation and safe usage.
- Back board adopts manual gas spring structure and angle adjustable.
- Built-in hidden auxiliary table, which is convenient for the doctors and birth-attendant

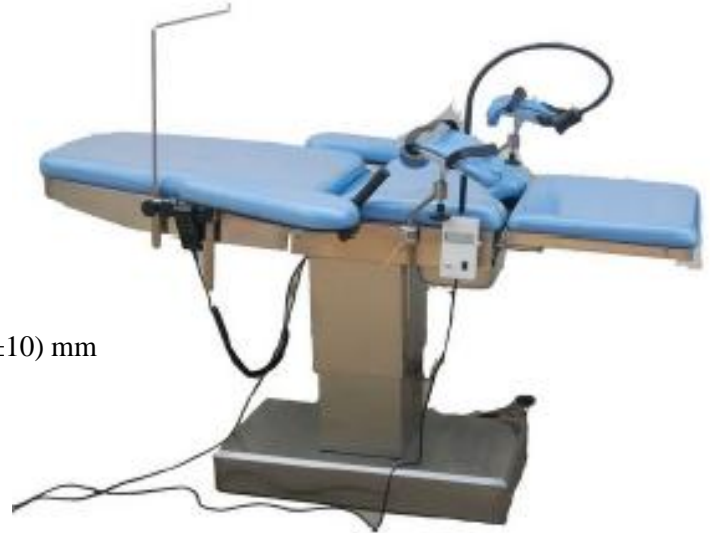
- All outer covers, table surface and trash basin are all make of stainless steel.
- Easy to clean and beautiful appearance
- The seamless mattress is suitable for human body posture and can avoid stain penetration, easy to clean.
- With locking function, all angles and height are available.

ACCESSORIES:

- Arm supporter- 2 pcs
- Leg supporter- 2 pcs
- Handrail- 2 pcs
- Anesthesia screen frame- 1 pcs

SPECIFICATIONS:

- The major table size (L×W) : $(1950 \pm 50) \times (600 \pm 10)$ mm
- Max height of the table: 700 ± 20 mm
- Up and down : 250mm
- Back section fold up : $\geq 45^\circ$
- Back section fold down : $\geq 5^\circ$
- reversed Trendelenburg $\geq 22^\circ$
- Trendelenburg $\geq 22^\circ$
- The auxiliary table size (L×W): $(520 \pm 10) \times (600 \pm 10)$ mm



ELECTRIC E.E.N.T. EXAMINATION & OPERATING TABLE

MODEL NO.: SEP-F16

DESCRIPTION

- Table top length: 1620 mm
- Table top width: 500 mm.
- Head pillow size: 300×160×50 mm
- Max height (electric): 750 mm
- Min height (electric): 550 mm
- Chair left and right tilt (electric): ± 15 degree
- Knees back board adjustment together (electric): 0- 180 degree
- Head pillow adjustment (manual): upward 35 degree downward 45 degree

STANDARD ACCESSORIES

- Head pillow
- Arm supports
- Power Wire
- Manual Controller
- Foot pedal
- Mattress



S.S. TELESCOPIC LABOR TABLE

MODEL NO.: SEP-F17



DESCRIPTION

- Three sectional stainless steel top, back – rest adjustable by ratchet.
- Middle section with “U” cut, leg section can slide under main frame
- Trendelenburg position achieved with Pneumatic pump system
- Provided with head & side safety rails, S.S. hand grips
- Three sectional mattress, a pair of Lithotomy
- Roads with straps/cruches & one I.V. Road
- Sliding S.S. Douche Tray
- Size: 187 L × 96W × 80H cms

EXAMINATION TABLE

MODEL NO.: SEP-F18



DESCRIPTION

- Manual Operated
- Back – Rest operated by screw system
- Frame made of strong rectangular CRCA pipe
- Pre-Treated and Epoxy powder coated
- Size: 210 L × 92 W × 60 H cms

EXAMINATION TABLE DELUXE

MODEL NO.: SEP-F19



DESCRIPTION

- Manual Operated
- Back – Rest operated by Screw System
- Body made up by MS Powder Coated
- Lower section comprises of five cabinets
- Size : 210 L × 92 W × 60 H cms



GEAR OVER BED TABLE

MODEL NO.: SEP-F20

DESCRIPTION

- Rectangular Frame work, mounted on 50 mm castors
- 76 L × 40 W cms, Laminated Top Adjustable
- Height: 76 – 106 cms (Adjustable)
- Pre-Treated and Epoxy Powder Coated



OVER BED TABLE/FOOD TROLLEY

MODEL NO.: SEP-F21

DESCRIPTION

- Table top mounted on four 50 mm castors
- 76l x 40w cms laminated top adjustable by side knob
- Height: 76 – 106 cms (adjustable)
- Pre-treated and epoxy powder coated



OVER BED TABLE

MODEL NO.: SEP-F22

DESCRIPTION

- Tubular Steel frame work mounted on four 50 mm castors
- Top Size: 106 L × 45 W cms
- Fitted with Four Rubber Stumps
- Height: 95 cms
- Pre-Treated and Epoxy Powder Coated



S.S. MAYO'S TABLE

MODEL NO.: SEP-F23

DESCRIPTION

- Stainless steel made
- Adjustable height by knob system mounted on four 50 mm castors
- S.S. tray: 49 L × 33 W cm
- Height: 84 – 140 cms (adjustable)

S.S. INSTRUMENT TABLE

MODEL NO.: SEP-F24

DESCRIPTION

- Stainless steel made
- Two S.S. shelves, covered with three side rails
- Mounted on four 100 mm castors, two with brakes
- Shelf size: 75 L × 45 W × 90 H cms



S.S. DRESSING TABLE

MODEL NO.: SEP-F25

DESCRIPTION

- Stainless steel made, Size : 75 L × 50 W × 90 H cms
- Two S.S. shelves covered with three side rails
- Provided with one S.S. bowl and bucket
- Mounted on four 100 mm castors, two with brakes



EMERGENCY TROLLEY

MODEL NO.: SEP-F26

DESCRIPTION

- Tubular Trolley with foot operated Hydraulic pump for height adjustment
- Pneumatic mechanism for Trendelenburg / Reverse Trendelenburg positions
- Two sectional X-ray Translucent Top with X-ray Cassettes holding tray
- Head Raise by Ratchet system With four 150 mm castors, two with brakes
- S.S. Swing Away type Side Rails, One S.S. I.V. Rod, Utility Tray & Cylinder Cage
- Size: 210 L × 67 W × 65- 85 H cms
- Stretcher Size: 182L x 56W cms
- Pre-treated & Epoxy Powder Coated Finish



S.S. PATIENT TROLLEY

MODEL NO.: SEP- F27

DESCRIPTION

- S.S. made, mobile on four 150 mm swivel castors, two with brakes
- Provision for I.V. rod with swing away railing
- Size : 203 L × 56 W × 82 H cms



FOLDING WHEEL CHAIR

MODEL NO.: SEP-F28

DESCRIPTION

- 45 cm canvas seat, Padded Fixed Arm Rests
- Front with 150 mm castors and rear with 60 cm solid wheel with Brakes
- Pre-Treated and Epoxy Powder Coated
- Size: 105 L × 65 W × 93H cm



NON - FOLDING CHAIR

MODEL NO.: SEP-F29

DESCRIPTION

- 45 cm cushioned seat & back, Padded fixed arm rests
- Front with 150 mm castors and rear with 60 cm solid wheel with Brakes
- Pre-Treated and Epoxy Powder Coated
- Size: 105 L × 68 W × 88 H cm



THREE FOLD SCREEN

MODEL NO.: SEP-F30

DESCRIPTION

- Pre- treated & Epoxy Powder Coated Finish, mounted on 5 cm



REVOLVING STOOL WITH S.S. TOP

MODEL NO.: SEP-F31

DESCRIPTION

- Frame work of CRCA tubes
- Pre-treated & Epoxy Powder Coated Finish
- Size: 50 L × 40 W × 46 H cms



REVOLVING STOOL WITH CUSHION

MODEL NO.: SEP-F32

DESCRIPTION

- Frame work of CRCA tubes
- Pre-treated & Epoxy Powder
- Coated Finish
- Size: 50 L × 40 W × 46 H cms



BED SIDE LOCKER (CRCA)

MODEL NO.: SEP-F33

DESCRIPTION

- Made of CRCA Sheet, One Box and One Drawer
- Mounted on 50 mm Castors
- Pre-Treated and Epoxy Powder Coated
- Top Size: 41 x 41 cm, Height: 81 cm

**BEDSIDE LOCKER (M.S)**

MODEL NO.: SEP-F34

DESCRIPTION

- MS powder coated with silver handles
- Height 56cm, Width 38cm, Depth 40cm

**BEDSIDE LOCKER (S.S)**

MODEL NO.: SEP-F35

DESCRIPTION

- Bedside locker, Dimension: 480 × 480 × 800 mm
- Made of stainless steel frame.

**SUCTION APPRATAUS HIGH VACCUM**

MODEL NO.: SEP-F36

DESCRIPTION

- Cabinet model with S.S. TOP
- 0.5 hp Motor connected to highly efficient oil immersed pump
- Two 2 Litres Suction Bottles

**S.S. CRASH CART**

MODEL NO.: SEP-F37

DESCRIPTION

- Tubular Steel Frame with Six Smooth Running Drawers
- Two S.S. Shelves, covered Side Rails & 12 hands bin
- Provided with Six / Twelve Hand out Bins, Message Board,
- One S.S. I.V. Rod and Cylinder Cage
- Mounted on four 150mm Castors, two with brakes
- Size: 71 W × 40 D × 152 H cm



GAS CYLINDER TROLLEY(1 CYLINDERS)

MODEL NO.: SEP-F38

DESCRIPTION

- Mobile on Two 100 mm Castors
- Pre-treated & Epoxy Powder Coated Finish



GAS CYLINDER TROLLEY WITH STABILIZER (2 CYLINDERS)

MODEL NO.: SEP-F39

DESCRIPTION

- Compatible with F, HX, LF, VF, ZX & G cylinders, max diameter 200mm, height 1350mm One piece construction
- Drop over chains secure the cylinders Stabilizing castors
- at rear of trolley reduce the likelihood of tipping during
- transportation 200mm anti-static wheels, 100mm swivel
- castors
- OVERALL DIMENSIONS (w x d x h) 780 x 740 x 1145mm
- STANDARD COLOURS
- Paint – Grey



GAS CYLINDER TROLLEY (12 CYLINDERS)

MODEL NO.: SEP-F40

DESCRIPTION

- Compatible with D, AD, CD, DD, PD, RD, ZD & E cylinders (12 × capacity) max diameter 105mm, height 870 mm
- One piece construction, Cylinders locate into individual sections, supported on a non-slip rubber base
- 125mm swivel castors, 2 off braking
- Size: 460 W × 590 D × 990 H mm
- Paint – Grey



HOSPITAL BABY BASSINET (TRANSPARENT)

MODEL NO.: SEP-F41

DESCRIPTION

- Transparent thermo-molded plastic basket that can be moved into the Trendelenburg and reverse Trendelenburg position using the gas spring system.



- The crib has internal dimensions of 650 x 350 mm and it sits on a stainless steel frame on four 100 mm castors.

MECHANICAL PEDIATRIC BED

MODEL NO.: SEP-F42

DESCRIPTION

- The Pediatrics designed Crib with mattress features compact resin bed features with articulated back and a mechanical ratchet leg board.
- The enameled stainless steel structure with folding rails mounts on 75 mm
- The crib measures 1250 x 750 x 1400 mm



FOOTSTEPS

MODEL NO.: SEP-F43

DESCRIPTION

- Frame work of CRCA tubes
- Pre-treated & Epoxy Powder Coated Finish
- Size : 50L x 40W x 46H cms



I.V. STAND

MODEL NO.: SEP-F44

DESCRIPTION

- S.S. Pipe, press molded Five leg base with 50 mm castors
- S.S. adjustable rod with 136 – 224 cms with double hook
- Size : 50L x 25W x 20H cms



SINGLE BASIN STAND

MODEL NO.: SEP-F45

DESCRIPTION

- Includes one removable 13¼" diameter, 7 quart stainless steel basin.
- Elevated ring basin bracket.
- Open frame design allows access from all sides.
- 2" diameter double ball bearing swivel casters.
- Durable stainless steel construction.
- Mobile and easy to clean.
- Overall size: 14"D x 14" W x 34" H
- Replacement Basin, 7 quart, 13 5/8" x 4 5/8"