



G.M INDUSTRIES

About us

GM INDUSTRIES is a high technology professional firm engaged in designing and manufacturing Precision Plastics Injection and Pressure Die Casting Molds, Precision Injection Parts and Gauges, etc. With years of experience and expertise, we have successfully delivered many of mold designs as well as fabrications to meet your design needs. Our experience makes us able to work for **Automobile parts, Home appliance, Electronic parts, Medical device, Little precise parts, etc.** Established in year 2010.

MACHINES LIST

Machine Name	Model	Size (MM)	Qty	Make
Vertical Machining Center	TREE-1000	1000x600x600	1	TREE (USA)
Vertical Machining Center	BDG-450	450x300x350	1	BRIDGEPORT (ENGLAND)
Electric Discharge Machine	ICONIK	350x300x300	1	ICONIK (TAIWAN)
Conventional Milling (with DRO)	M1TR	500x300x300	1	PRECICUT (TAIWAN)
Conventional Milling	M1TR	500x300x300	1	RENU MACHINE
Lathe	-----	6" INCH	1	AMAR MACHINE
Surface Grinder	-----	450x300	1	GAMT
Drilling M/C	-----	Drill 50mm	1	GALLEY

Air Compressor	TS 05 M	200 liters	1	ELGI
Electric Gantry Crain		1.5 Ton	1	
Hydraulic Lifter		2.0Ton	1	China
Polishing Kit			2	Taiwan

CHECKING INSTRUMENTS`				
Digital Height Gauge	570-302	0-300mm	1	Mitutoyo (Japan)
Dial Indicator	-	01μ	5	Mitutoyo (Japan)
Dial Indicator	-	0.01mm	3	Mitutoyo (Japan)
Dial Indicator (Plunger type)	-	0.01mm	3	Mitutoyo (Japan)
Radius Gauge	-	0.5 - 15	2	
Dial Caliper		0.01mm	5	
Digital Caliper			5	
Combination set	-	180°	1	



G.M INDUSTRIES

QUALITY POLICY

GM INDUSTRIES is committed to achieve the milestone through hundred percent customer satisfaction & support by providing high quality tools with on time delivery at best competitive price. Hence we focus on continuous improvement our quality & delivery system to remain on race.



G.M INDUSTRIES

OUR VALUABLE PARTNER(CUSTOMER)

- 1) MKM TECHNOLOGIES PVT.LTD.**
 - 2) CAPTAIN GEARS AND FANS**
 - 3) DAKSH TOOLS AND APPLIANCES PVT LTD.**
 - 4) HAGG LIGHTING**
 - 5) ARTH FITNESS**
 - 6) EVERFINE PLASTIC INDUSTRIES PVT LTD.**
 - 7) DYNATECH CONTROLS PVT. LTD.**
 - 8) ATMA AUTOTECH PVT. LTD.**
- AND MANY OTHERS...**



G.M INDUSTRIES

OUR VALUABLE PRODUCTS

***DEVELOPING PLASTIC INJECTION MOULDS FOR
AUTOMOTIVE, ELCTRICALS, ELECTRONICS, HEALTH CARE
& INDUTRIAL APPLICATIONS.***



G.M INDUSTRIES

OUR MANUFACTURED PRODUCTS



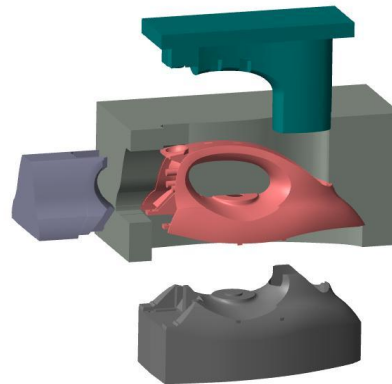
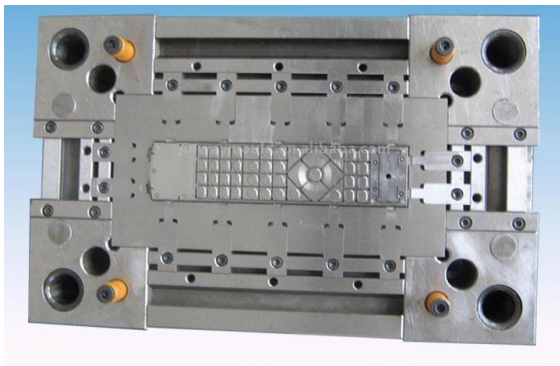


G.M INDUSTRIES

OUR MANUFACTURED PRODUCTS



OUR MANUFACTURED PRODUCTS





G.M INDUSTRIES

OUR MACHINES





G.M INDUSTRIES

Looking forward your valuable support



THANK YOU