



iMesh

Broadband Ad-hoc Network Solution



Hytera Communications Corporation Limited
Stock Code: 002583.SZ

Address: Hytera Tower, Shenzhen Hi-Tech Industrial Park North,
Beihuan RD.9108#, Nanshan District, Shenzhen, P.R.C.

Tel: +86-755-2697 2999 **Fax:** +86-755-8613 7139 **Post:** 518057

Http: //www.hytera.com **marketing@hytera.com**



Hytera retains right to change the product design and specification. Should any printing mistake occur, Hytera doesn't bear relevant responsibility. Little difference between real product and product indicated by printing materials will occur by printing reason.

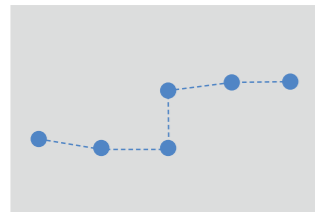
HYT, Hytera are registered trademarks of Hytera Communications Corp., Ltd.
© 2017 Hytera Communications Corp., Ltd. All Rights Reserved.

iMesh Series

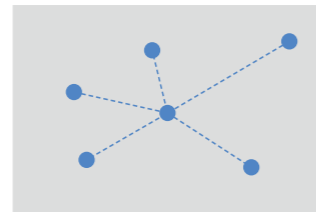
iMesh series include a range of products developed based on 4G and Pre-5G technologies. iMesh solution sets up a secure, non-of-sight wireless link-on-demand, providing high data throughput to enable front line responders to communicate with on-site command center in complicated environment. The network deployment is flexible. It is suitable for various application scenarios including public safety, VIP escort, emergency communications and etc.

iMesh Diversified Networking

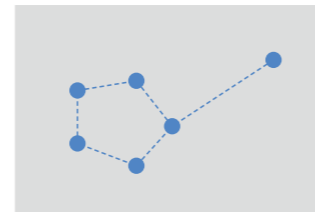
Several mesh nodes automatically form a wireless link in multiple networking shapes, such as chain, star, random, and hybrid. The mesh network is self-healing, allowing the system to automatically recover from the single-point failure by intelligently discovering and hopping to any other available node in the network.



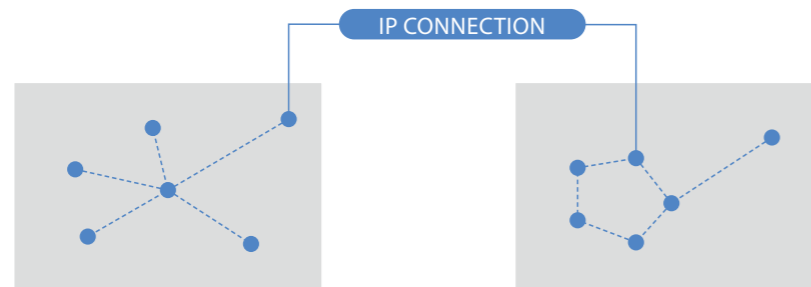
Chain Networking



Star Networking



Random Networking



Hybrid Networking



iMesh Vehicle Node

The node can be installed on a vehicle, at a fixed place, or carried by a UAV, applied to various mission critical scenarios.

Features

- High throughput
- Self-organizing
- Wide coverage
- E2E QoS and encryption
- Light in weight and compatible with external batteries
- MIL-STD-810G
- WiFi/4G, Ethernet Ports

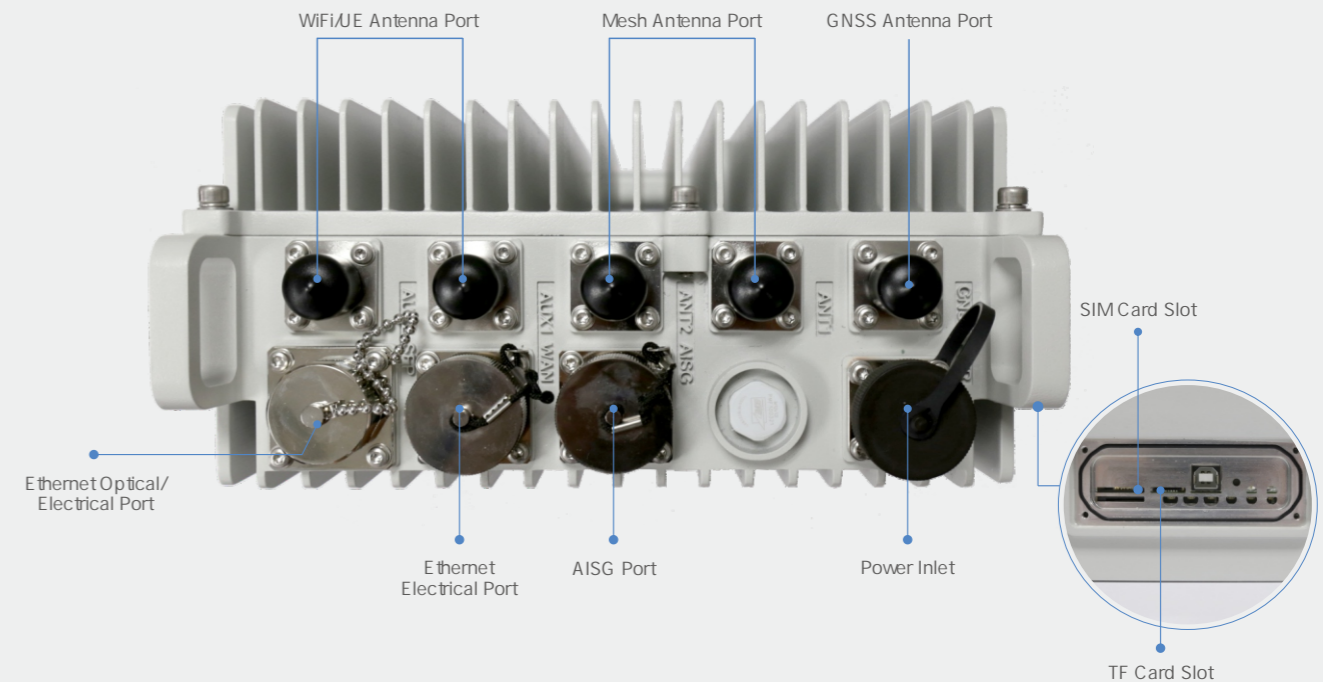


Specifications

Operating Frequency	320–344 MHz, 542–582 MHz, customizable
Antenna Configuration	2T2R
TX Power	2x5 W
Sensitivity	≤−105 dBm @ 10 MHz
Operating Bandwidth	10 MHz (typ.), customizable
Single-hop Delay	5–10 ms
Max. Number of Nodes	32
Coverage Distance	40 km (LOS), 5 km (NLOS)
Spectral Efficiency/Throughput	6 bps/Hz, 60 Mbps (max.)

Encryption	AES, Snow 3G, third-party algorithm
Dimensions	330mmx240mmx114mm
Weight	7kg
Power Supply	12–24 V DC
Power Consumption	40W(Typ.), 70W (Max.)
Operating Temperature	−40 to +65
Operating Humidity	5%RH to 100%RH
IP Rating	IP67

Connectors Diagram



iMesh Man-Pack Node

The node enables onsite video capture and transmission. It can be carried by individuals or a UAV for emergencies.

Features

- High throughput
- Self-organizing
- Wide coverage
- E2E QoS and secure encryption
- Light in weight: 5 kg including battery
- Golden Pin Design Award
- MIL-STD-810G
- WiFi, Ethernet, Bluetooth, HDMI Ports

Specifications

Operating Frequency	320–344 MHz, 542–582 MHz, customizable	Encryption	AES, Snow 3G, third-party algorithm
Antenna Configuration	2T2R	Dimensions	266mmx206mmx87mm (battery included)
TX Power	2x2 W	Weight	5kg (battery included)
Sensitivity	≤−105 dBm @ 10 MHz	Power Supply/Battery Capacity	12 V, 14800 mAh
Operating Bandwidth	10 MHz (typ.), customizable	Power Consumption	20W(Typ.), 40W (Max.)
Single-hop Delay	5–10 ms	Operating Temperature	−40 to +65
Max. Number of Nodes	24	Operating Humidity	5%RH to 100%RH
Coverage Distance	10 km (LOS), 2km (NLOS)	IP Rating	IP67
Spectral Efficiency/Throughput	6 bps/Hz, 60 Mbps (max.)		



iMesh Handheld Node (MiFi)

The node is small in size, low in power consumption, and easy to carry. It is suitable for firefighters, special agents, VIP escort operations.

Features

- Small in size
- Light in weight and low in power consumption
- High throughput
- IP67
- Large capacity battery



Specifications

Operating Frequency	320–344 MHz, 542–582 MHz, customizable	Encryption	AES, Snow 3G
Antenna Configuration	1T1R	Connectors	Wi-Fi, Micro USB, BT
TX Power	1x0.5 W	Dimensions	170mmx85mmx30mm
Sensitivity	≤−102 dBm (10 MHz)	Weight	0.6kg
Operating Bandwidth	≤10 MHz	Power Consumption	4W (Max.)
Single-hop Delay	5–10 ms	Operating Temperature	−40 to +65
Max. Number of Nodes	16	Operating Humidity	5%RH to 100%RH
Coverage Distance	2 km (LOS), 500 m (NLOS)	IP Rating	IP67
Throughput	6 Mbps (10MHz)		

Solution Highlights

Flexibility

- Self-organizing and self-healing capability
- Supports multiple topologies: chain, star, and hybrid
- All-IP
- Multiple I/O Interfaces Supported: Optical/Ethernet/Bluetooth/HDMI/LTE/WiFi

Large Capacity

- Spectral Efficiency: 6 bps/Hz
- Throughput: 60 Mbps @ 10 MHz (Max), supporting 15 channels 1080P videos.

QoS

- 3GPP-based QoS and customized QoS
- Service Prioritization

Mobility

- Vehicle speed up to 120 Km/h

Security

- Encryption: Snow 3G, AES, IPSec, and more
- Mesh authentication: USIM AKA
- Wi-Fi authentication: EAP-SIM, EAP-Radius, and WPA/WPA2

High Reliability

- MIL-STD-810G
- IP67

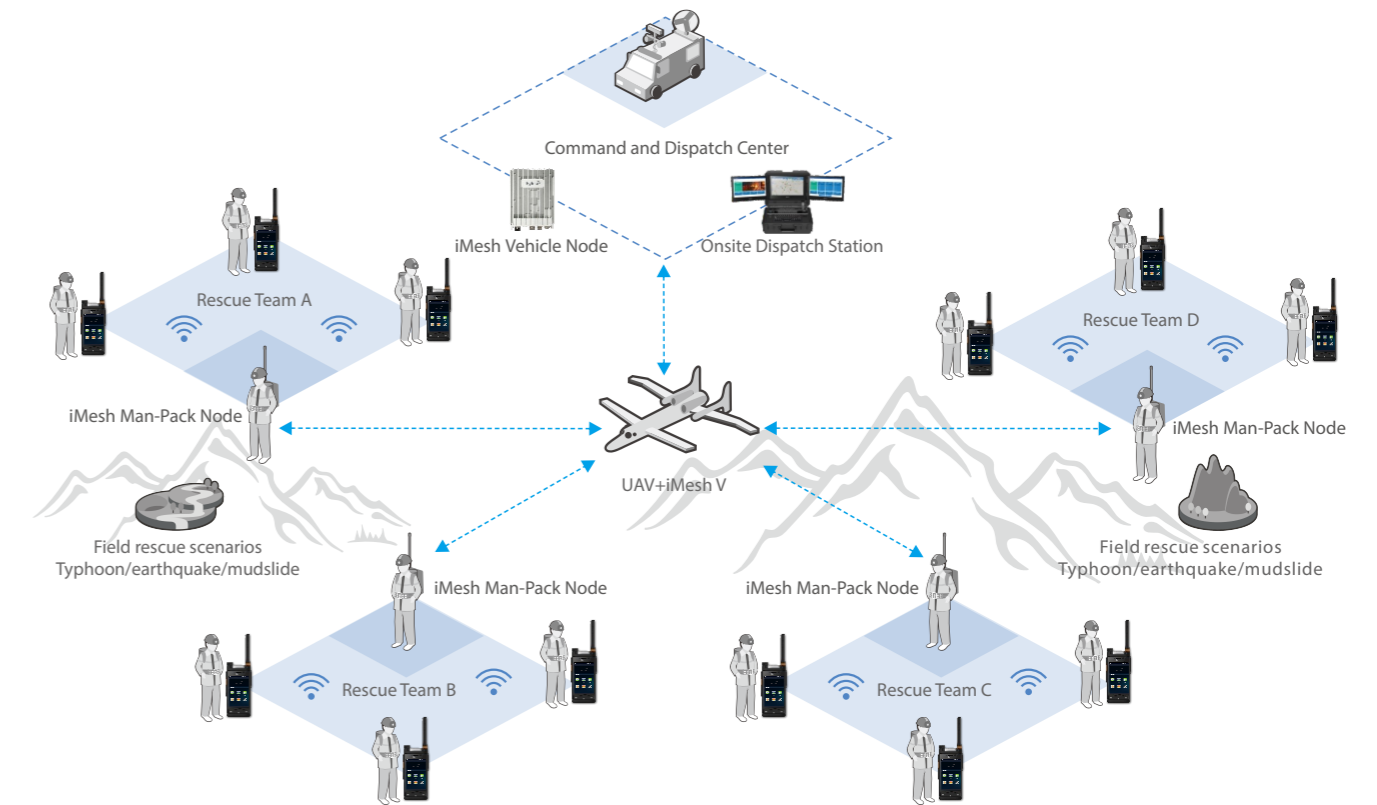
Large Coverage

- LOS 40 km (Max.)
- NLOS 5 km (Max.)

Synchronization

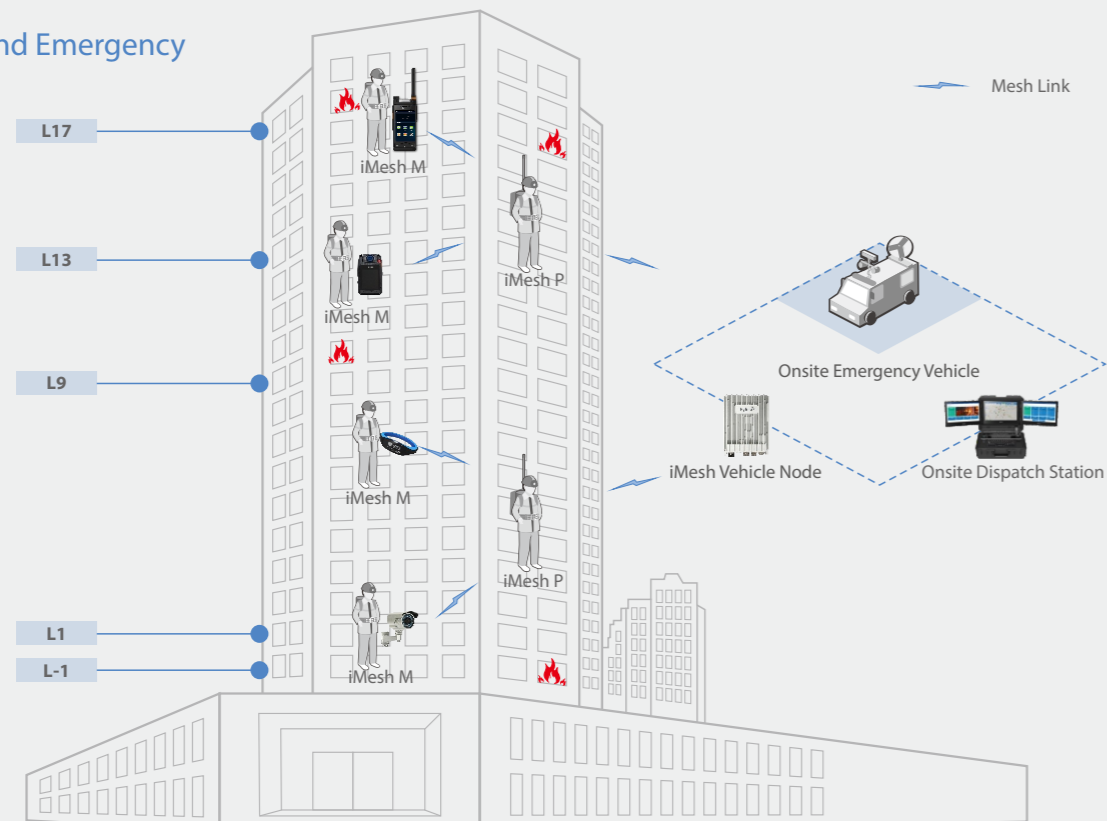
- GPS/Beidou/GLONASS/1588 V2

Rescue and Relief



Application Scenarios

Fire and Emergency



VIP Escort

