



KUMAR OIL MILLS



A SQUEEZE
ABOVE
THE REST



SUPERIOR PERFORMANCE

LOWER POWER CONSUMPTION

Selection of motors is done keeping in mind the peak load that could arise due to inconsistent feeding resulting in lower power consumption.

EXTERNAL GEAR BOX

The high efficiency gear box ensures low maintenance, reduced noise levels and less power consumption.

LOWER OPERATION AND MAINTENANCE

Due to sturdy construction and stringent quality norms our machines work with higher efficiency and incur lower maintenance costs.

PREMIUM EXPELLED OIL QUALITY

Well designed worm assembly and chamber construction ensures superior quality of expelled oil which is sold in the market at premium rates.

SUPERIOR QUALITY OF CAKE

Since pressure exerted in the machine is even, the cake quality is excellent and cake produced from the machine is of natural color without charring or burning effect.

LOWER RETENTION OF OIL IN CAKE

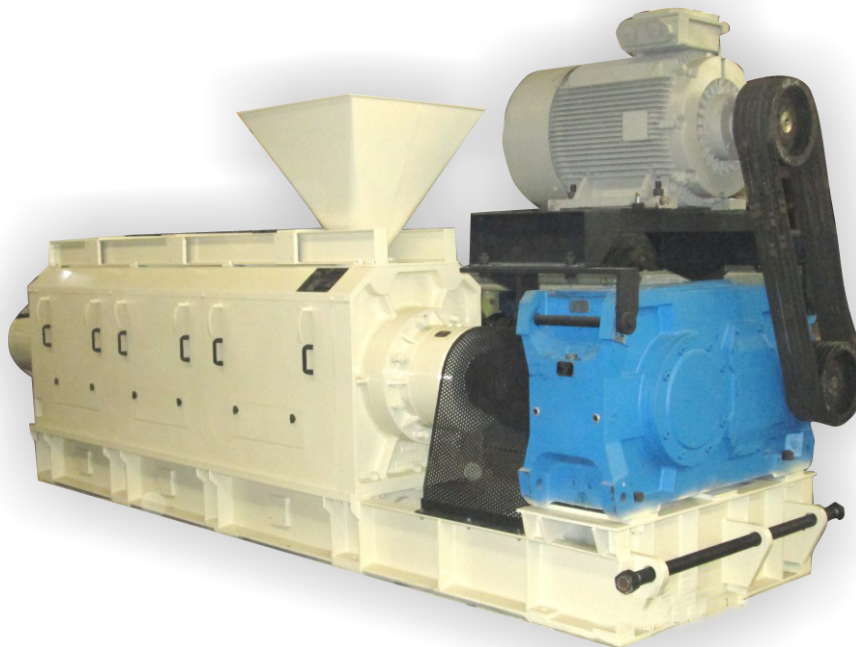
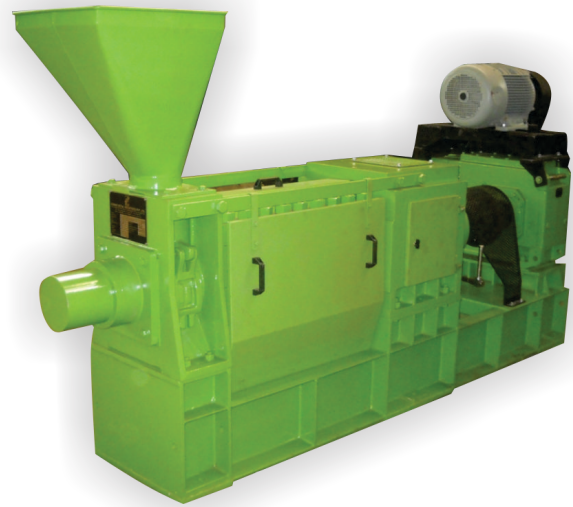
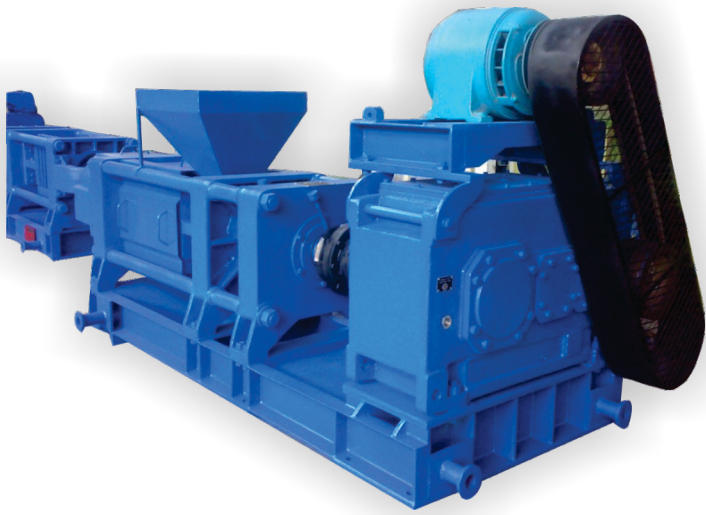
Superior process parameters ensure lower retention of oil in the cake.

INTERNATIONAL CERTIFICATIONS

As per applicable international norms, equipments and machinery are manufactured in compliance with **ASME & EU DIRECTIVES**.



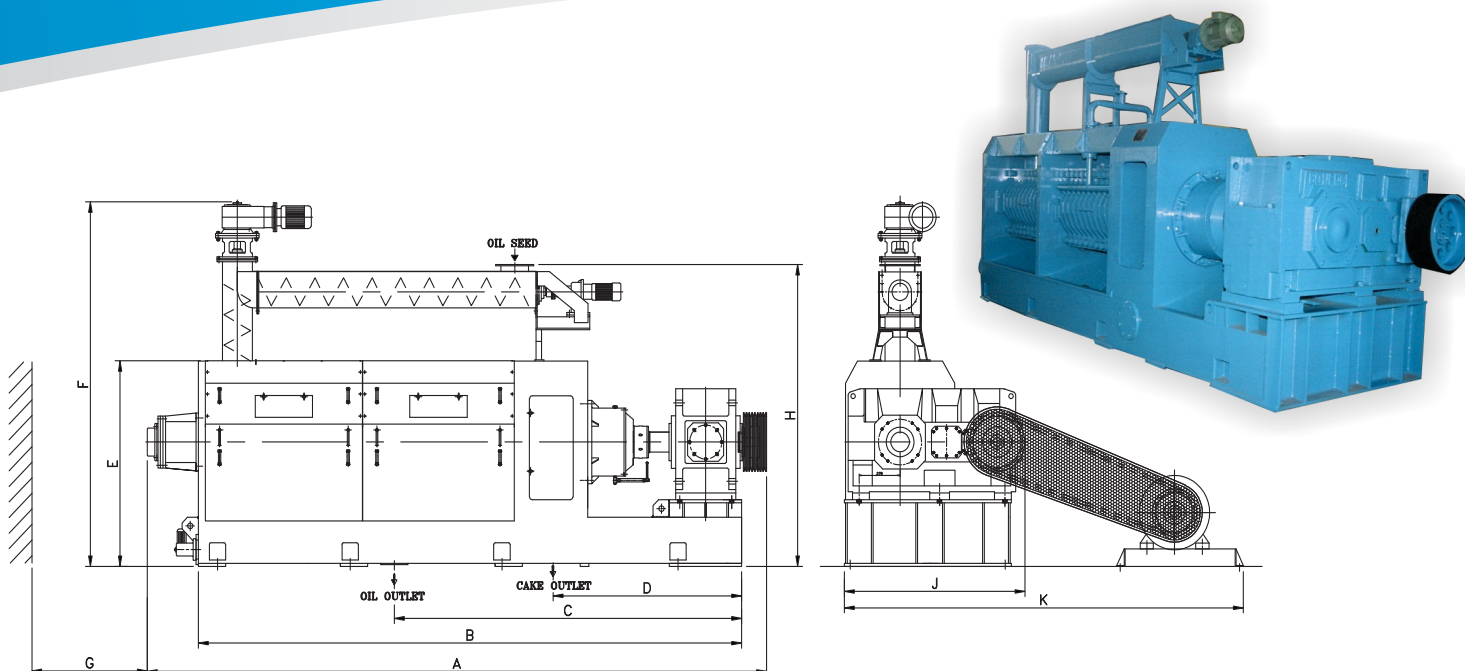
OIL EXPELLERS



The Process

Oil seeds are properly cleaned & destoned before further processing. Properly cleaned and destoned oil seeds are subjected to size disintegration / flaking to achieve superior efficiency of the machine. These disintegration seeds are then cooked where the oil cells get properly tempered to expel the oil easily. These cooked seeds are subject to mechanical pressing in the expeller where the oil comes out with some amount of fines. This oil is then filtered via Vibro Separator and filter press to get clean & clear oil. The control, operation and supervision of the plant can be handled by minimum operating staff.

'X'PRESS SERIES



The 'X'PRESS series is currently the largest in the range with rigorous high standards for design to deliver world class performance and reliability with minimum investment.

The series consist of Steel cast Double chamber expellers with Horizontal and Vertical Feeders, inbuilt Oil N Foots conveyor, with Hard-Faced wear parts and other value added options.

| TECHNICAL DATA | | UNIT | PRE-PRESS | | FULL-PRESS | |
|--------------------------------------|-------|----------|---------------|---------------|---------------|---------------|
| Type | | | XP-200 | XP-250 | XP-200 | XP-250 |
| Capacity | | MT / 24h | 100-180* | 120-200* | 75-130* | 90-150* |
| Residual oil in cake | | % | 16-20 | 16-20 | 7-10 | 7-10 |
| Rated Power for Main Motor | | HP | 215-335 | 250-335 | 215-335 | 250-335 |
| Rated Power for Oil N Foots Conveyor | | HP | 1 | 1 | 1 | 1 |
| Rated Power for Horizontal Feeder | | HP | 3 | 3 | 3 | 3 |
| Rated Power for Vertical Feeder | | HP | 7.5 | 7.5 | 7.5 | 7.5 |
| Chamber size Dia x Length | Feed | mm | Ø300 x 1300 L | Ø315 x 1300 L | Ø300 x 1300 L | Ø315 x 1300 L |
| | Disch | | Ø275 x 1350 L | Ø290 x 1350 L | Ø275 x 1350 L | Ø290 x 1350 L |
| Approx.Wt. | | MT | 17.5 | 18 | 17.5 | 18 |

VALUE ADDED OPTIONS :

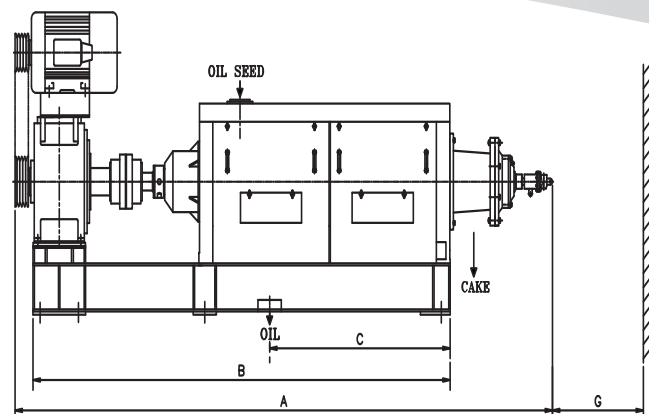
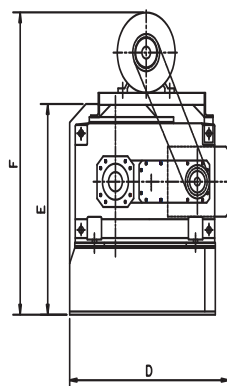
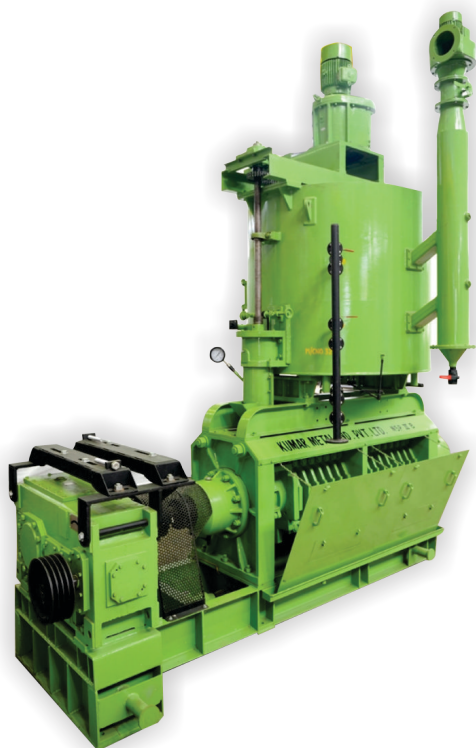
1. Barring motor system for emptying of chamber during power failure.
2. Hydraulic Jack for Chamber Opening and Closing for easy, quick and hassle free maintenance.
3. Hydraulic Cone Adjusting System for Online Variation of cake thickness.

DIMENSIONS (APPROX.)

| Unit | A | B | C (Can vary as per layout) | D | E | F | G (For shaft removal) | H | J | K |
|------|------|------|-------------------------------|------|------|------|--------------------------|------|------|------|
| mm. | 5670 | 4975 | 3180 | 1725 | 1775 | 3150 | 5500 | 2610 | 1655 | 3655 |

*Capacities, residual oil contents in cake and required power rating vary with the type, composition, quality and preparation of seed to be processed.

NEW SUPER PRESS SERIES



The NEW SUPER PRESS series consist of mid range expellers designed to meet the needs of medium sized Mechanical Extraction Plants.

The series consist of Steel Cast Double / Triple chamber expellers with inbuilt Oil N Feet conveyor, Hard Faced / Carbon Steel Hardened and Tempered wear parts and other value added options.

| TECHNICAL DATA | | UNIT | PRE-PRESS | | | | FULL-PRESS | | | |
|-------------------------------------|-----------|--------|---------------|---------------|-------------|---------------|---------------|---------------|-------------|---------------|
| Type | | | NSP IIB | NSP IIC | NSP IIIC | NSP IIICLD | NSP IIB | NSP IIC | NSP IIIC | NSP IIICLD |
| Capacity | | MT/24h | 30-35* | 40-45* | 50-60* | 60-70* | 20-22* | 35-40* | 35-45* | 45-50* |
| Residual oil in cake | | % | 16-20 | 16-20 | 16-20 | 16-20 | 7-10 | 7-10 | 7-10 | 7-10 |
| Rated Power for Main Motor | | HP | 75 | 100/120 | 150 | 150/175 | 75 | 100/120 | 150 | 150/175 |
| Rated Power for Oil N Feet Conveyor | | HP | 0.5 | 0.5 | 0.5 | 0.5 | 0.5 | 0.5 | 0.5 | 0.5 |
| Chamber Size (Dia x Length) | Feed | | Ø279.4x939.8L | Ø279.4x939.8L | Ø330x939.8L | Ø330x939.8L | Ø279.4x939.8L | Ø279.4x939.8L | Ø330x939.8L | Ø330x939.8L |
| | Middle | mm | — | — | Ø254x863.6L | Ø279.4x584.2L | — | — | Ø254x863.6L | Ø279.4x584.2L |
| | Discharge | | Ø209.5x863.6L | Ø254x863.6L | Ø225x863.6L | Ø254x863.6L | Ø209.5x863.6L | Ø254x863.6L | Ø225x863.6L | Ø254x863.6L |
| Approx.Wt. | | MT | 7.5 | 8.5 | 10.6 | 10 | 7.5 | 8.5 | 10.6 | 10 |

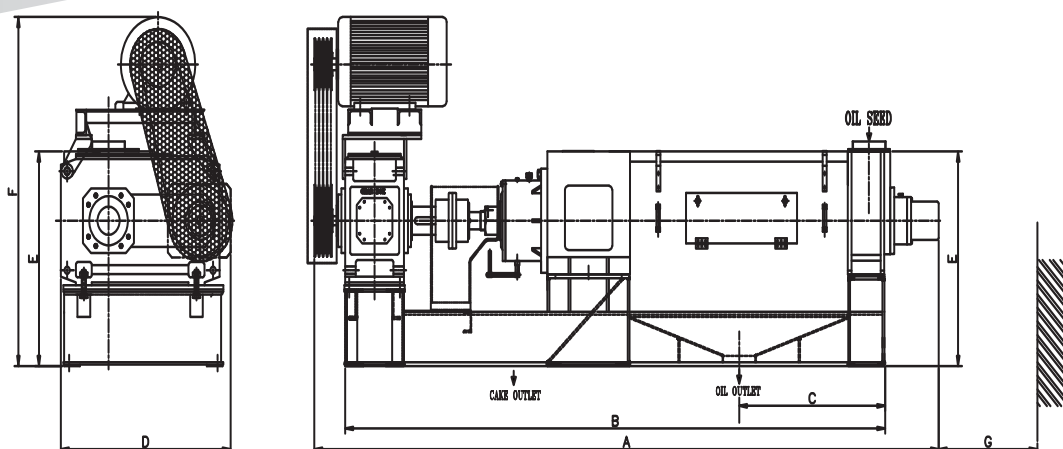
VALUE ADDED OPTIONS :

1. Barring motor system for emptying of chamber during power failure.
2. Hydraulic Jack for Chamber Opening and Closing for easy, quick and hassle free maintenance.

| DIMENSIONS (APPROX.) | UNIT | NSB IIB | NSP IIC | NSP IIIC | NSP IIICLD |
|----------------------------|------|---------|---------|----------|------------|
| A | mm | 4670 | 4670 | 5787 | 5500 |
| B | mm | 3619 | 3619 | 4500 | 4200 |
| C (can vary as per layout) | mm | 1550 | 1550 | 2150 | 2000 |
| D | mm | 1300 | 1360 | 1360 | 1360 |
| E | mm | 1200 | 1200 | 1200 | 1200 |
| F | mm | 2200 | 2200 | 2200 | 2200 |
| G (for shaft removal) | mm | 3000 | 3000 | 4500 | 4500 |

*Capacities, residual oil contents in cake and required power rating vary with the type, composition, quality and preparation of seed to be processed.

NEW OIL-N-OIL SERIES



The NEW OIL N OIL SERIES consist of small to mid range expellers designed to meet the needs of small and medium sized Mechanical Extraction Plants

The series consist of Fabricated or Steel single cast chamber expellers with Hard-Faced / Carbon Steel Hardened and Tempered wear parts and other value added options..

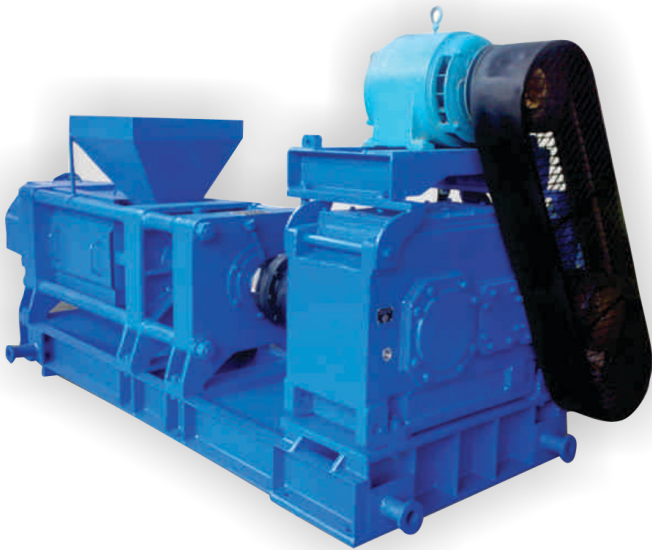
| TECHNICAL DATA | UNIT | PRE PRESS | |
|--------------------------------------|--------|-----------------|-------------------|
| Type | | NMK- VII | MK-VIII |
| Capacity | MT/24h | 30-40* | 70-80* |
| Residual oil in cake | % | 16-20 | 16-20 |
| Rated Power for Main Motor | HP | 60/75 | 150/175 |
| Rated Power for Oil N Foods Conveyor | HP | 0.5 | 1 |
| Chamber size (Dia x Length) | mm | Ø 255/230x1565L | Ø 279.5/254x2400L |
| Approx.Wt. | MT | 6 | 9 |

| TECHNICAL DATA | UNIT | FULL PRESS | | | | |
|--------------------------------------|--------|--------------|------------|-------------------|-----------------|-------------------|
| Type | | NMK- II | NMK- III | NMK- IVC | NMK- VII | MK VIII |
| Capacity | MT/24h | 5-6* | 8-9* | 10-12* | 25-30* | 50-60* |
| Residual oil in cake | % | 7-9 | 7-9 | 7-9 | 7-9 | 7-9 |
| Rated Power for Main Motor | HP | 25 | 30 | 40 | 60/75 | 150/175 |
| Rated Power for Oil N Foods Conveyor | HP | — | — | — | 0.5 | 1 |
| Chamber size (Dia x Length) | mm | 152.4 x 840L | 178 x 840L | 178/222 x 1117.6L | Ø 255/230x1565L | Ø 279.5/254x2400L |
| Approx.Wt. | MT | 3 | 3.2 | 3.5 | 6 | 9 |

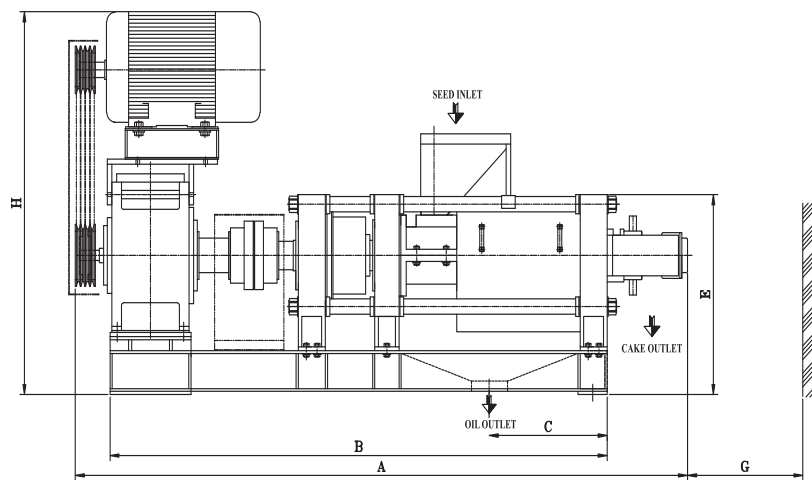
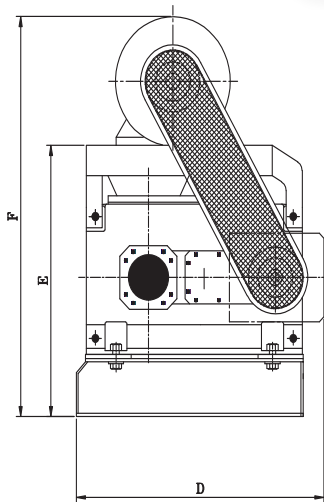
| DIMENSIONS (APPROX.) | UNIT | NMK II / NMK III | NMK IVC | NMK- VII | MK- VIII |
|----------------------------|------|------------------|---------|----------|----------|
| A | mm | 3180 | 3490 | 4473 | 5750 |
| B | mm | 2745 | 3030 | 3790 | 4950 |
| C (can vary as per layout) | mm | 680 | 821 | 980 | 1450 |
| D | mm | 875 | 875 | 1170 | 1300 |
| E | mm | 1080 | 1080 | 1190 | 1500 |
| F | mm | 1612 | 1678 | 1795 | 2200 |
| G (for shaft removal) | mm | 2200 | 2500 | 3000 | 4300 |

*Capacities, residual oil contents in cake and required power rating vary with the type, composition, quality and preparation of seed to be processed.

PALM KERNEL - OIL EXPELLER



- This series is specially designed and manufactured for extraction of palm kernel oil.
- This series consist of Fabricated single chamber expellers with Hard-Faced wear parts.

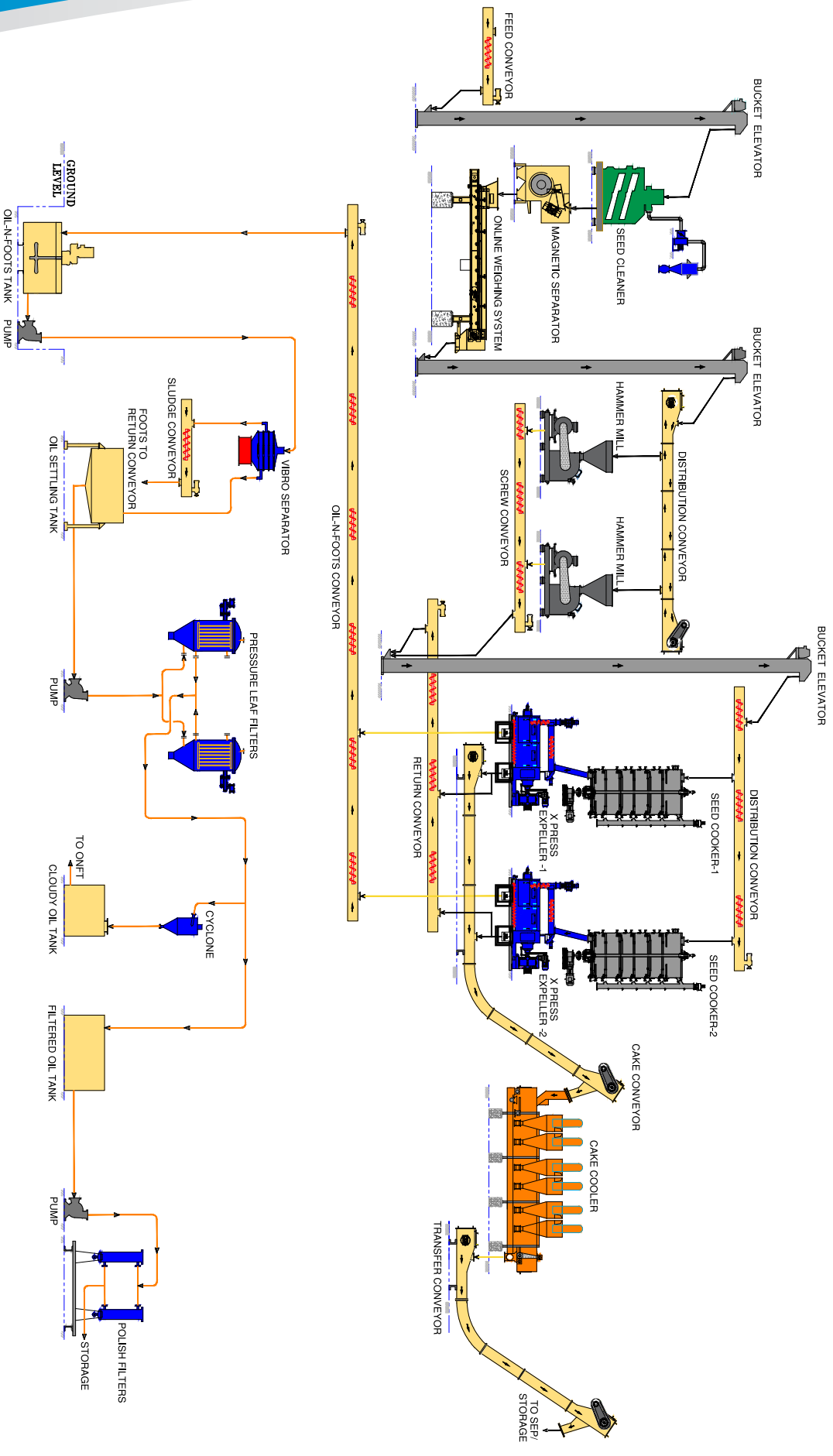


| DIMENSIONS (APPROX.) | UNIT | PK - 15 | PK - 25 |
|----------------------------|------|---------|---------|
| A | mm | 3400 | 3400 |
| B | mm | 2762 | 2762 |
| C (can vary as per layout) | mm | 655 | 655 |
| D | mm | 1375 | 1375 |
| E | mm | 1000 | 1000 |
| F | mm | 1300 | 1300 |
| G (for shaft removal) | mm | 2000 | 2000 |

| TECHNICAL DATA | UNIT | FIRST PRESS | | SECOND PRESS | |
|-----------------------------|--------|--------------|--------------|--------------|--------------|
| Type | | PK-15 | PK-25 | PK-15 | PK-25 |
| Chamber size (Dia x Length) | mm | Ø178 x 640 L | Ø209 x 640 L | Ø178 x 640 L | Ø209 x 640 L |
| Capacity | MT/24h | 12/15* | 22/25* | 08/10* | 14/16* |
| Residual oil in cake | % | 18-20 | 18-20 | 8-10 | 8-10 |
| Rated Power for Main Motor | HP | 50 | 75 | 50 | 75 |
| Approx.Wt. | MT | 4.5 | 4.8 | 4.5 | 4.8 |

*Capacities, residual oil contents in cake and required power rating vary with the type, composition, quality and preparation of seed to be processed.

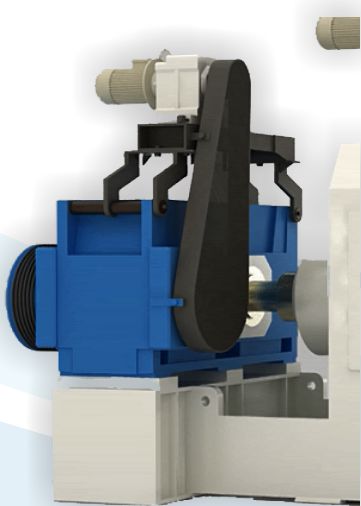
PROCESS FLOW DIAGRAM FOR OIL MILL



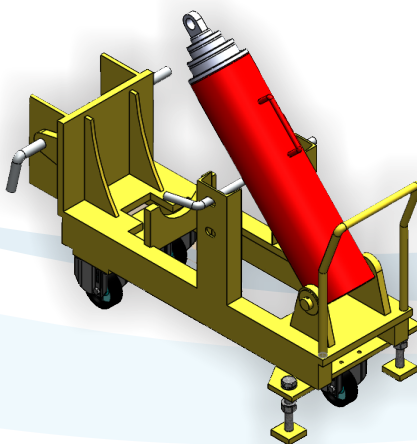
SALIENT FEATURES

- All expellers are supplied with a high efficiency External Gear Box.
- Pressure worms are hard faced with special welding electrodes to achieve desired hardness.
- Sturdy Construction, low Investment and easy installation.
- Maximum Oil yield at low operating costs.
- Can crush all type of edible and non-edible oil seeds.
- Easy and time saving main worm shaft removal without disturbing the gear box assembly.
- Vertical split hinged main cages provided with cage lifting for safe, quick and effortless maintenance.
- Special designed locking type clamping bars and bolts to enable easy tightening & removal of the cage.
- Fully enclosed cage with a built in screw conveyor at the base for conveying oil and foots which keeps the shop floor neat and clean.
- Steel cast hobbing cut helical gears. Induction hardened, completely assembled on a single piece hollow driving sleeve with heavy duty roller and taper roller bearing to acquire perfect alignment and friction free for energy saving.
- Multistage vertical stack cooker for proper conditioning of the seeds.
- All the bearings are lubricated with the help of a special motorized pump to increase bearing life.

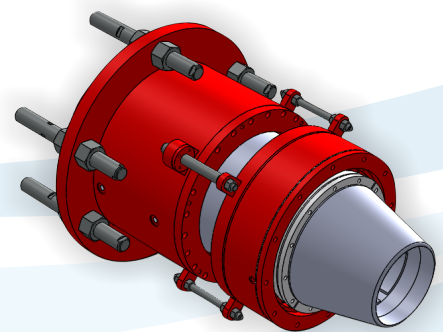
VALUE ADDED OPTIONS



Barring Motor System
for emptying of chamber during
power failure



Hydraulic Jack
for Chamber opening and
closing for easy, quick and
hassle free maintenance.



Hydraulic Cone Adjusting System
for Online variation of cake thickness



SEED CLEANER

Seeds are properly cleaned into seed cleaner to remove unwanted material like dust, leafs, steins etc. Then the seeds are subjected to Destoner to remove various sizes of stones / sand. This removal of unwanted material reduces the down time & increases the life of machines.

Salient Features :

- Low maintenance.
- Variable speed and flexibility in slope of screen for smooth flow of seeds
- Suitable for various feeding seeds
- Spreading presents a uniform bed to the aspiration chamber



DESTONER

Vibratory type operating on vacuum principle. Steel box frame with sieve slope adjustment. Sieve box supported on rubber blocks with durable wooden sieve frames, covered with steel screens, aluminium baffles and cleaners. Complete with inspection windows and adjustable stone separation device. Includes cyclone, air lock and air fan

Salient Features :

- Helps in increasing the purity and quality of the seeds
- Complete with inspection windows
- Adjustable stone separation device.
- Compact in size and easy to use.
- Eliminates dust emission.



ROTARY MAGNET

Rotary magnetic drum separator is used for cleaning the ferrous material from the feed seed and assure the removal of impurities.

Salient Features :

- No power supply needed.
- No electrical contact problems.
- Cling to vertical surfaces.
- No damage to processing material.

PREPARATORY SECTION

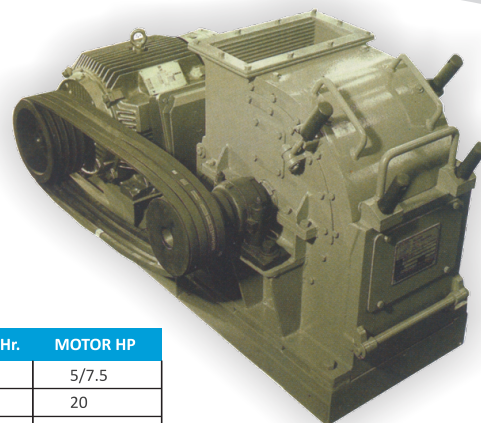
HAMMER MILL

Hammer Mill is mainly used to disintegrate the product to desired size to have the proper Expelling. The Hammers (Beaters) are rectangular for efficient grinding & are made from hardened alloy steel. Hammer Mill is mainly used in case of Copra.

Salient Features :

- Capable of grinding many different types of materials.
- Easy to maintain and clean.
- Occupies small space.
- Provides efficient grinding at the shortest time, which saves human labour as well as time.

| MODEL | CAPACITY / Hr. | MOTOR HP |
|---------|----------------|----------|
| HM - A1 | 500 kgs | 5/7.5 |
| HM - 1 | 1000 kgs | 20 |
| HM - 2 | 2000 kgs | 30/40 |
| HM - 3 | 3000 kgs | 40/50 |
| HM - 5 | 5000 kgs | 50/75 |
| HM - 8 | 8000 kgs | 75/100 |

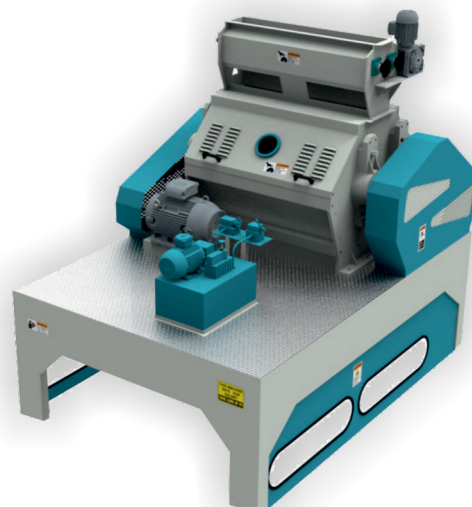


DECORTICATOR

Decorticator is mainly used in separation of hulls from kernel in case of Groundnut. Use of Decorticator increases the capacity of Expeller and reduces the down time of the machine.

Salient Features :

- Increases the capacity of screw press and reduces the down time of the machine.
- Easily separate the nuts into husk and kernels
- Gives better Cutting output.
- Easy Installation and Easy to operate



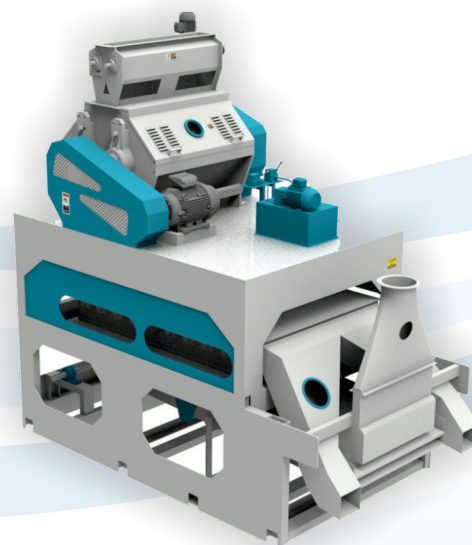
HULLERS & SHAKERS

Huller & Shaker is a machine where kernel is separated from the seeds & the hulls are separated from the kernel. In this process, one can increase the capacity of the machine by doing de-hulling of seeds which in turn reduce down-time of the machine.

This process is mainly used in case of Cotton Seed / Sunflower.

Salient Features :

- Minimum oil absorption
- Simplicity of adjustment
- Low maintenance costs
- Clean cutting action of the huller and the efficient separation of meats and hulls by the shaker.

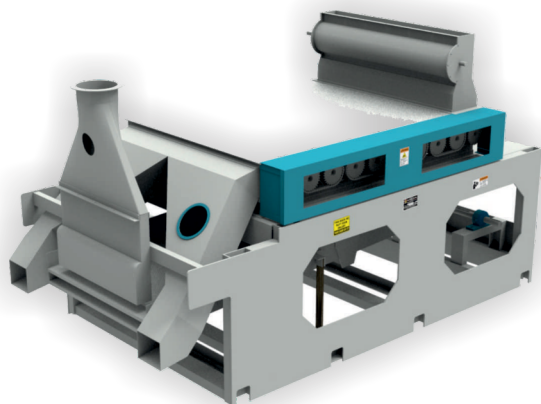




DENSITY SEPRATOR

This equipment is suitable for separating uncut seed, meat and hulls. The large hulls get first beaten to separated meat, further uncut seeds & hulls get separated in zig-zag chamber by density difference.

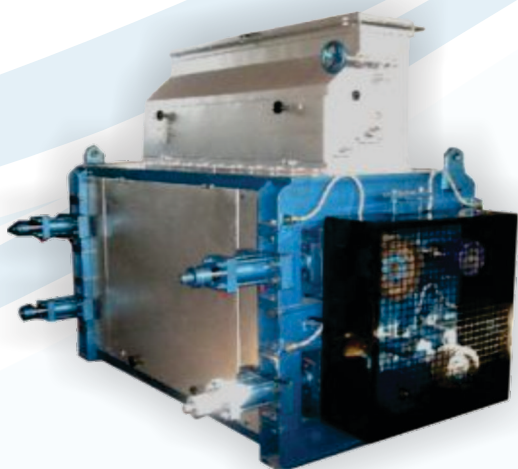
This process is mainly used in case of Cotton Seed /Sunflower.



HULLERS PURIFIER

This equipment is suitable for recovering sticky meat from separated hulls in order to minimize the oil loss in dehulling process.

The equipment is complete with Feeder, spiked rotating Beaters, perforated U-tube Basket, speed reduction gear, shaker tray complete with suitable perforated sheet, heavy-duty steel frame complete with drive stand.



CRACKER

Four roll Cracker to break the seed into quarter and eight sized pieces comprising of Carbon steel frame, cast alloy rolls Double strand.

Rolls Two V-belts, drive motor & Diverter gate. Hinge-Mounted Permanent magnet.

This cracker can be used for 100, 150, 200, 300 tons per day capacity plant.

Salient Features :

- Reduction in wear & tear.
- Good quality, suitable for different seed material.
- Long service life.
- Excellent performance and reliability means top value for money.

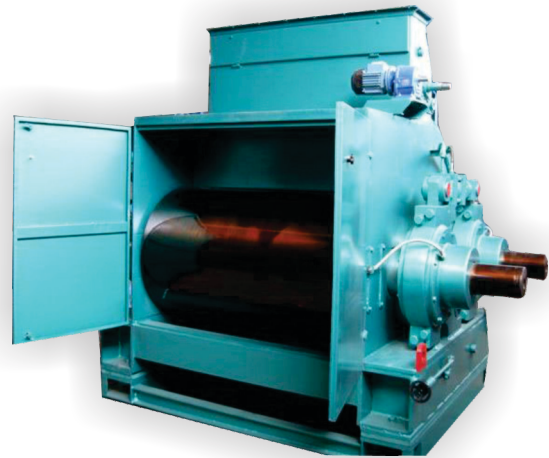
PREPARATORY SECTION

FLAKER

Most seeds have tough oil bearing cellular structure which has to be ruptured or weakened prior to cooking and extraction. Flakers are normally used to increase the capacity of Screw press as well it reduces the wear & tear of the Press. This flaker can be used for 100, 200, 350 tonnes per day capacity plant.

Salient Features :

- Space and energy reducing design.
- Quiet, clean and safe operation.
- Low energy consumption (kWh/t).
- Flake thickness adjustable during operation
- High throughputs with excellent flaking quality



COOKER CONDITIONER

To correctly cook and condition the material prior to Flaker. Vertical, multi-stage unit with fabricated shell and trays where heating is carried out by indirect steam.

The gates operated by mechanical level system automatically control the flow of material and the level in each stage.

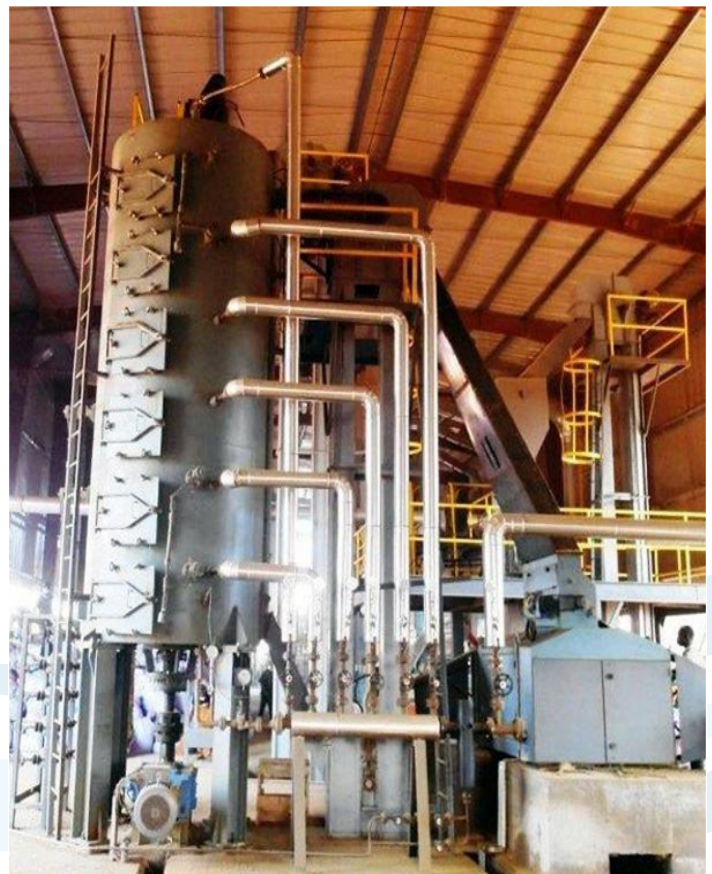
A central shaft driven by a gearbox carried agitator blades to ensure a good mix, a homogenous treatment of the material and prevents burning on the stage bottoms.

A vertical duct extracts exhaust vapors from each stage.

Provision is made to adjust final moisture levels of the material by injecting water or direct steam.

Salient Features :

- Reducing the viscosity and adjust the moisture content.
- Seed levels and overall residence time are easily adjustable.
- Simple operation provides flexibility for multiple seed varieties.
- Superior tray and shell design provide for years of trouble-free service



FILTER PRESS

Oil from the expeller comes to the Vibro Separator, where the core particles are separated by vibration. The oil is then sent to the tank where it is pumped for final Filtration via plate type filters.

Salient Features:

- Raised rim around the edges to form a chamber between 2 plates
- High rate of filtration
- Powerful pump & accurate assembly
- Leak proof joints to withstand operating pressure
- High grade CI casting & shot blasted for smooth finish

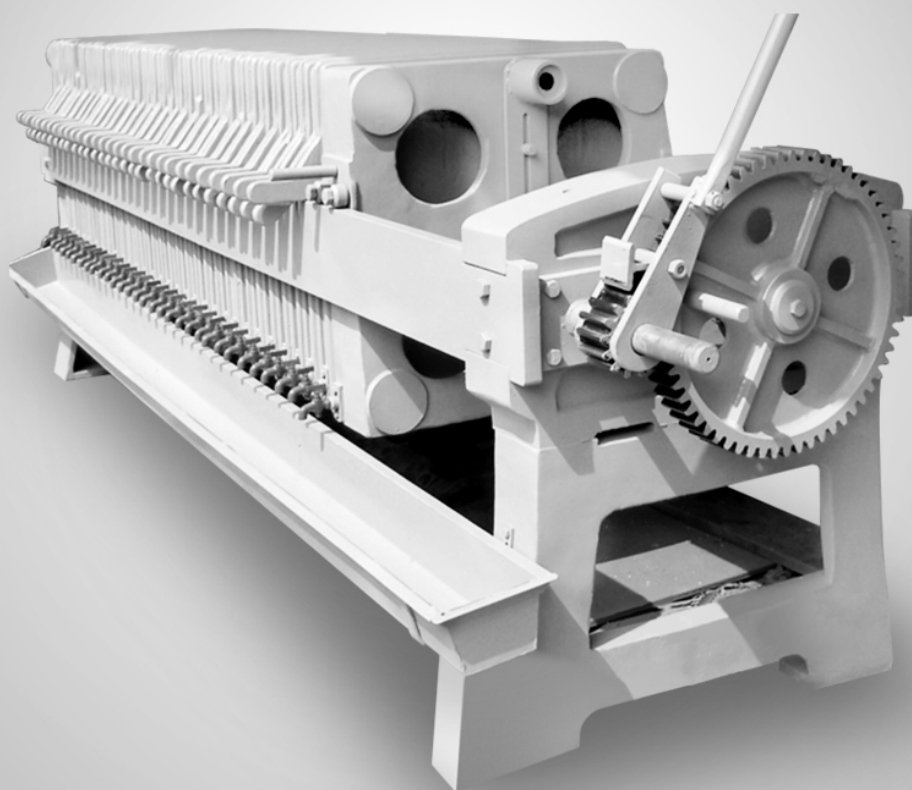


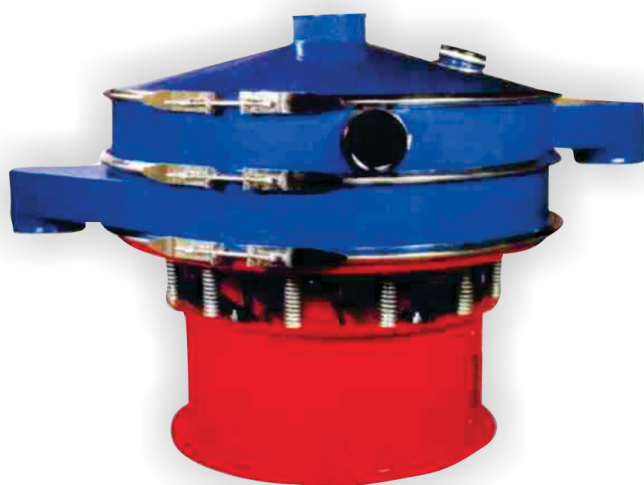
PLATE TYPE

| SIZE INCHES | CAKE HOLDING CAPACITY CU. FT. | FILTERING AREA (Sq. Ft.) | PUMP MOTOR (HP) |
|-----------------------|-------------------------------|--------------------------|-----------------|
| 30" X 30" X 40 Plates | 19 | 215 | 7.5 |
| 30" X 30" X 30 Plates | 14.2 | 160 | 5 |
| 25" X 25" X 36 Plates | 6.5 | 132 | 3 |
| 25" X 25" X 30 Plates | 5.8 | 110 | 3 |
| 25" X 25" X 25 Plates | 4.5 | 95 | 3 |
| 18" X 18" X 18 Plates | 1.75 | 35 | 2 |
| 15" X 15" X 15 Plates | 1 | 26 | 2 |
| 12" X 12" X 12 Plates | 0.4 | 10 | 1 |

PLATE AND FRAME TYPE

| SIZE INCHES | CAKE HOLDING CAPACITY CU. FT. | FILTERING AREA (Sq. Ft.) | PUMP MOTOR (HP) |
|---------------------|-------------------------------|--------------------------|-----------------|
| 30" X 30" X 36F/35P | 37 | 195 | 7.5 |
| 30" X 30" X 30F/29P | 30 | 160 | 5 |
| 25" X 25" X 30F/29P | 13 | 110 | 3 |
| 25" X 25" X 25F/24P | 11 | 95 | 3 |
| 18" X 18" X 18F/17P | 5.3 | 35 | 2 |
| 8" X 8" X 13F/12P | 0.6 | 5 | 2 |

VIBRO SEPARATOR



The Vibro Separator is a separating machine which includes a vertical type special motor to facilitate three dimensional composed circular and elliptic motions in horizontal, vertical & inclinational faces. The vibro separator achieves superior performance as the feed (Crude Oil) is dispersed from the centre equally; hence all parts of screen cloth are fully utilized.

| SCREEN (INCH) | POWER (HP) |
|---------------|------------|
| 24" | 0.5HP |
| 30" | 0.5HP |
| 36" | 0.5HP |
| 48" | 1.5HP |
| 60" | 1.5HP |
| 72" | 3HP |

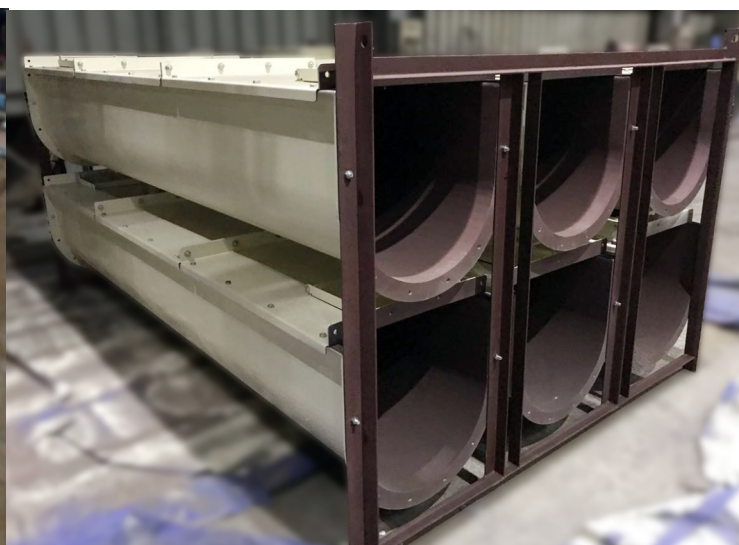
PRESSURE LEAF FILTER POLISH FILTER



Pressure Leaf Filters are available in horizontal & vertical cylindrical vessels with leafs made of Stainless Steel. It is provided with a Vibrator & a butterfly valve. These filters are also used in Oil Mills.

| SIZE (m ²) |
|------------------------|
| 10 |
| 20 |
| 30 |
| 50 |
| 70 |

SCREW CONVEYOR



Salient Features:

- Available in different size and MOC
- Easy erection and assembly at site
- Hanger bearing designed for minimum obstruction of material flow
- Semi Teflon Bush in Hanger Bearing to avoid lubrication Problems.

| SCREW DIA (in mm) | CAPACITY (cu.Mtr./hr) @ 40% Filling |
|-------------------|--|
| 150 | 3.8 |
| 200 | 9 |
| 230 | 13.6 |
| 250 | 17.6 |
| 300 | 30.5 |
| 350 | 48.5 |

CHAIN CONVEYOR

Salient Features:

- Available in different size and MOC.
- Easy erection and assembly at site.
- Bottom of Conveyor lined with abrasion-resistant material.
- Fabricated chain manufactured in special with hardened links.

| REDLER SIZE (in mm) | CAPACITY (cu.Mtr./hr) |
|---------------------|-----------------------|
| 200 | 16.8 |
| 250 | 21 |
| 300 | 32.9 |
| 350 | 38.3 |
| 400 | 43.8 |
| 500 | 54.8 |



BUCKET ELEVATOR



Salient Features:

- Available in different size and MOC
- Easy erection and tensioning of chain
- Locking arrangement provided to prevent reverse rotation
- Fabricated chain manufactured in special steel with hardened links
- Seamless buckets for high strength and wear resistance
- Also available with belt instead of chain

| BUCKET SIZE | CAPACITY (cu.Mtr./hr) @ 60% Filling |
|-----------------|--|
| 6"x 4"x 3.25" | 6.4 |
| 8"x 5.25"x 4.5" | 15.1 |
| 10"x 6"x 5" | 27.6 |
| 12"x 6"x 5" | 34.5 |
| 14"x 7"x 6" | 64.6 |

A COMPLETE PACKAGE



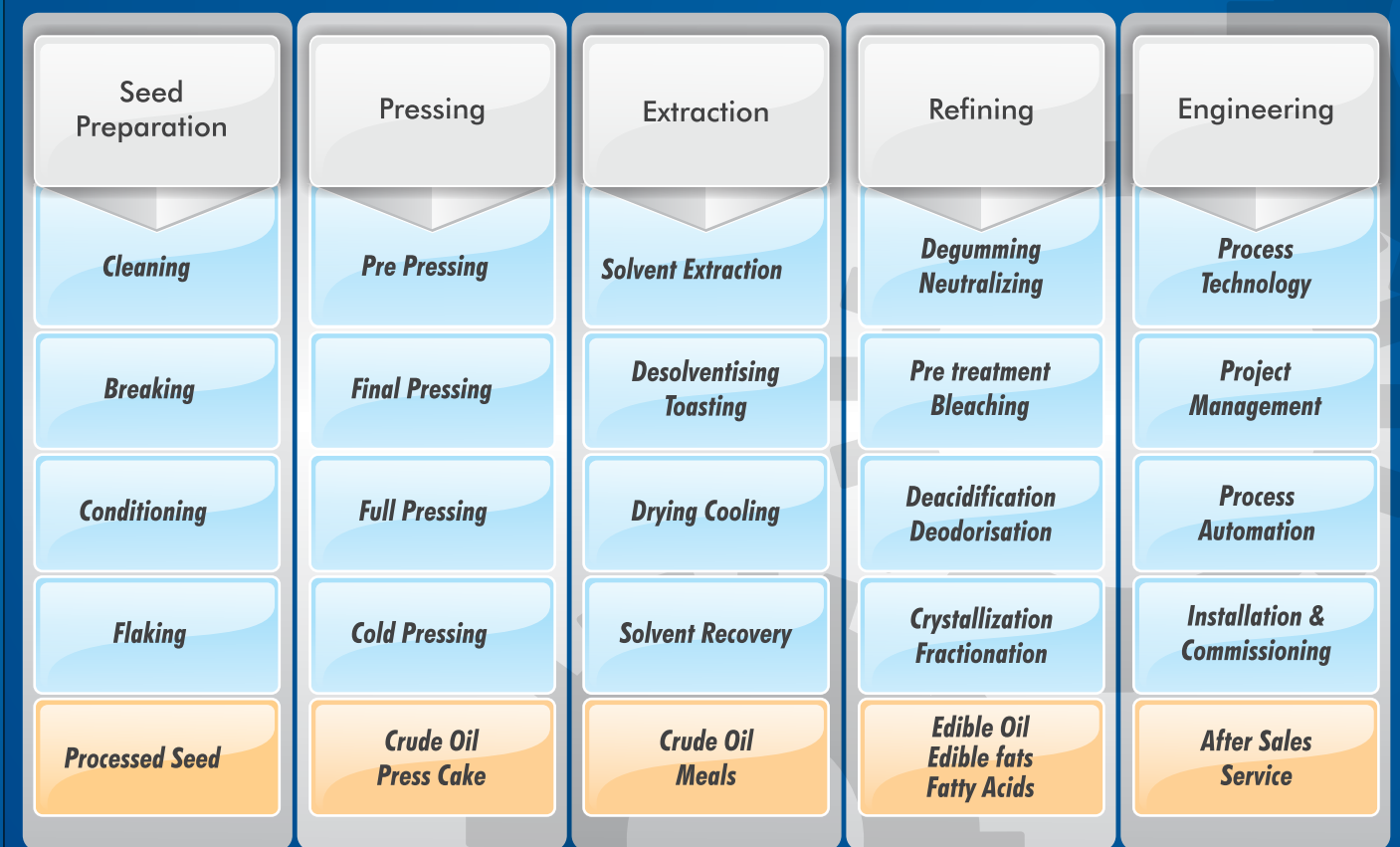
Kumar is a global company. Not only do we serve customers around the world, we also use the best technology and supply resources to ensure that only the best is delivered to our customers. We have installed and commissioned several oil mills, solvent extraction plants and refineries around the world. Our vast experience and expertise to design, engineer and install complete process plants on turnkey basis has given us the competitive edge. We have our presence in over 45 countries and served more than 500 clients.

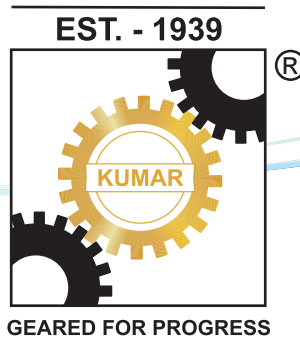
Process Control: The control, operation and supervision of the plant can be handled by minimal staff. All main process parameters for example flow rates, temperatures, liquid levels etc. are automatically maintained from a control panel or, as an option, with the help of PID/PC based controls.

Our services also include:

- Installation design in compliance with international standards
- Complete process automation
- Skilled manpower for supervision of installation and commissioning
- Technical and manpower assistance to bring your new installation on line in minimum possible time
- We provide skilled operational staff and also train the local staff

Your Partner In The Oil Industry





Kumar Metal Industries Pvt. Ltd.



CORPORATE HEAD QUARTERS :

101, Kakad Bhavan, 30th Road,
Opp. Gaiety Galaxy Cinema,
Bandra (West), Mumbai - 400 050, India

☎ + 91-22-2644 1667 / 73 /74

☎ + 91-22-2642 7982

☎ + 91-22-2642 8136



MANUFACTURING UNIT I :

Plot No.7, Mira Co-Op.
Industrial Estate,
Mira Road, Dist. Thane-401 104, India

☎ + 91-22-2845 9100

☎ + 91-22-2845 8300

☎ + 91-22-2845 6263

✉ info@kumarmetal.com

🌐 www.kumarmetal.com



MANUFACTURING UNIT II :

At & Post- Ten, Mastan Naka, Manor,
Ahmedabad Highway No.8,
Tal. & Dist. Palghar - 401 403, India

