



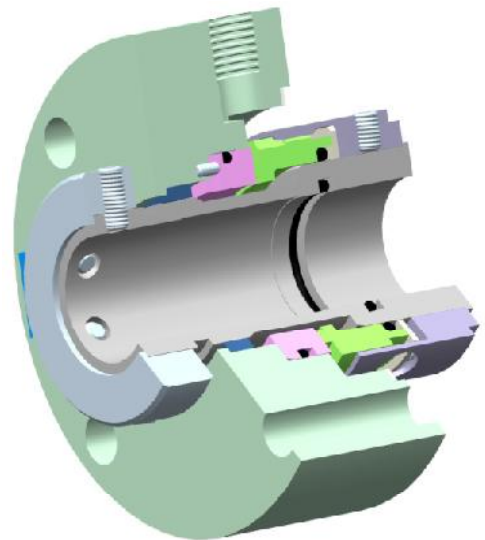
## Seal Type 55B/C - Balance Cartridge

### PRODUCT DESCRIPTION

Seal Type 55B/C are Recommended for Clean media application. Seal Type 55B/C is Standard for using where Corrosive Liquid are being Processed. Construction of these Seal designs holds whole Rotary Parts together with the help of Snap Rings which is make easiest for Installation and Removal. This Type of Seals is designed for using for Petroleum Products, Low Aggressive Chemicals and Refrigerants in Centrifugal pumps and other Equipment with Rotating Shafts.

### DESIGN FEATURES

Balance Pusher Seals available in Single Sealing Environmentally. Dual Directional. Mechanical Seal Drive – Reduces Slippage on Shaft or Sleeve to Eliminate Galling and Premature Wear. Heavy Duty Seal Faces remain flat during Operation to minimize Leakage. Components in Cartridge Design are Builds for the Highest Reliability and Simple Installation. Hydraulic Balance Seal Permits using Higher Pressure as well as it Create Low Heat Generated on Faces and provides long Life. Flushing Ports helps to reduces the Heat for Uniform Face Cooling. Advance designed Spring Holder Pumping Ring of Flushing Spring area. Unitized, Easy-to-Fit Design.



### MATERIALS

Seal Ring Faces	: Carbon, TC and SiC
Seat Faces	: SiC and TC
Elastomer	: Viton, PTFE, and FFKM
MOC	: SS 316, Hast -C and Alloy - 20

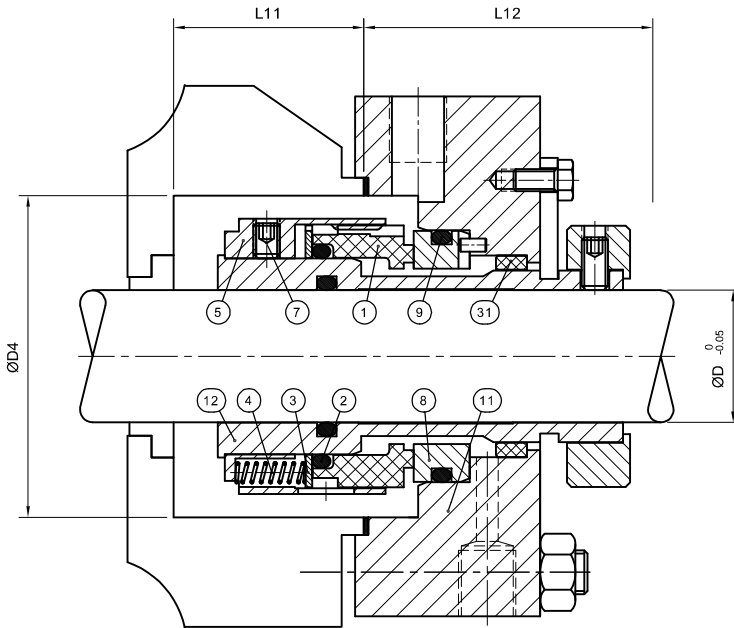
### OPERATING CAPABILITIES

Shaft Dia.	: 10mm to 100mm
Pressure	: Up to 35 bar
Temperature:	-30°C to 260°C (Depending upon Elastomer)
Speed	: 3000 r.p.m.



**Type - 55B/C**

**Balance Cartridge**



Part No.	Description
1	Seal Ring
2	O-Ring
3	Thrust Ring
4	Spring
5	Spring Holder
7	Set Screw
8	Seat
9	O-Ring
11	Gland Plate
12	Sleeve
31	Throttle Bush

SHAFT SIZE D	SEAL SIZE		D4	L11	L12
	inch	mm			
12.70	0.875	22.22	43.60	35.70	51.60
14.30	0.937	23.80	44.45	35.70	51.60
15.85	1.000	25.40	46.80	35.70	51.60
19.00	1.125	28.58	50.00	37.30	51.60
20.65	1.250	31.75	53.15	36.50	52.40
22.25	1.375	34.92	56.30	36.50	52.40
25.40	1.500	38.10	59.50	36.50	56.35
28.55	1.625	41.28	65.85	45.20	56.35
31.75	1.750	44.45	69.00	45.20	56.35
34.92	1.875	47.62	72.20	45.20	60.30
38.10	2.000	50.50	75.40	49.20	63.50
41.25	2.125	53.98	80.15	50.80	63.50
44.45	2.250	57.15	83.30	50.80	63.50
47.62	2.375	60.32	86.50	50.00	65.90
50.80	2.500	63.50	89.70	50.00	65.90
53.95	2.625	66.68	97.60	57.15	66.65
57.15	2.750	69.85	100.80	57.15	66.65
60.30	2.875	73.02	103.95	57.15	66.65
63.50	3.000	76.20	107.10	57.15	70.60
66.65	3.125	79.38	110.30	57.15	70.60
69.80	3.250	82.55	113.50	57.15	70.60
73.00	3.375	85.72	116.65	57.15	73.80
76.20	3.500	88.90	119.00	54.75	76.20
79.35	3.625	92.08	123.00	54.75	76.20
82.53	3.750	92.25	126.20	53.95	77.00
85.70	3.875	98.42	128.55	53.95	77.00
88.85	4.000	101.6	131.75	53.95	77.00

Due to continuous improvement specifications and dimensions may change without prior notice.