



B-57 PVC Resin, Blue Pulver Powder, Blue Regrind, Grey Pulver Powder, Grey Regrind, H 66 CGPC PVC Resin, HS-1000R Type Polyvinyl Chloride Resin, Japan Regrind, K6701 PVC Resin, LG CHEM LS100E PVC Resin, LG CHEM LS100H PVC Resin, Mix Regrind, P-1000 Grade PVC Resin, PVC Mix Pulver, Plastic Blue Regrind, etc.



BLUE REGRIND



GREY REGRIND



MIX REGRIND

## About Us

Help your business expand its horizons and serve to a wide range of industrial and manufacturing applications with the inclusion of products from Shri Balaji Industries in your product range. We provide a wide range of products such as the Grey Regrind, Mix Regrind, Japan Regrind, PCV Mix Pulver, White Pulver Powder, Grey Pulver powder, SCG SP660 Polyvinyl Chloride Resin and SG-5 PVC Resin. All our products are used in a wide range of manufacturing and other industrial applications, and hence every product of ours fulfills various responsibilities. To ensure that our products can tackle all such responsibilities with ease, we put them through some of the most rigorous series of tests and analyses. Such extensive testing throughout the production process of our products allows us to recognize any issues with the quality of the product early on. We have articulated our product range based on the ever-changing demands of the customers, and hence we are a dynamic manufacturer, supplier, and trader ready to fulfill the needs of the customers in every scenario.

We, Shri Balaji Industries, are an eminent and well recognized manufacturer, supplier, and trader of a wide range of products that find applications in a wide range of manufacturing and other industrial applications. Our product range includes White Pulver Powder, Grey Pulver Powder, SCG SP660 Polyvinyl Chloride Resin, SG-5 PVC, LG CHEM LS100H PVC Resin and HS-1000R Type Polyvinyl Chloride Resin. All our products have been designed keeping the multiple necessities they fulfill in perspective, and hence these can be a simple fix to all your requirements for your industrial uses and needs. Being a prominent name in the industry, we need to keep an ardent eye upon the new developments and trends that emerge in the market and also execute our principle duties, which we do so from our headquarters in Indore, Madhya Pradesh, India.

## Key Facts

<b>No of Staff</b>	5
<b>Year of Establishment</b>	1980
<b>OEM Service Provided</b>	No

**Our Products**



**HS-1000R Type Polyvinyl Chloride**



**Blue Pulver Powder**



**Grey Pulver Powder**



**H 66 CGPC PVC Resin**



**SCG SP660 Polyvinyl Chloride Resin**



**LG CHEM LS100H PVC Resin**



**B-57 PVC Resin**



**White Pulver Powder**



**SG-5 PVC Resin**



**P-1000 Grade PVC Resin**



**White Regrind**



**K6701 PVC Resin**



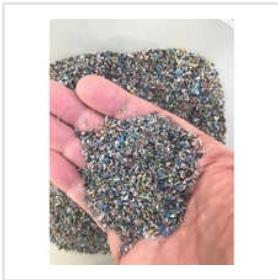
**LG CHEM LS100E PVC Resin**



**Japan Regrind**



**Plastic Blue Regrind**



**PVC Mix Pulver**





ADDRESS

**78, Sampat Farm, Indore,  
Madhya Pradesh, India  
(452016).**



EMAIL

**alokmoondhara@yahoo.in**



MOBILE

**+918109300000**



WEBSITE

**shribalajiin.tradeindia.com**

KEY PERSONNEL  
**Rahul Moondhra**  
(CEO)