

KANSIL'S

SCIENCE CATALOGUE

January
2024

MOST MODERN & INDISPENSABLE TEACHING LEARNING MATERIAL
FOR PHYSICS, CHEMISTRY, BOTANY, ZOOLOGY

Bones & Skeleton Models

DIY Kits

Zoology Models

Brain Model



Dental Model


Anatomy Models



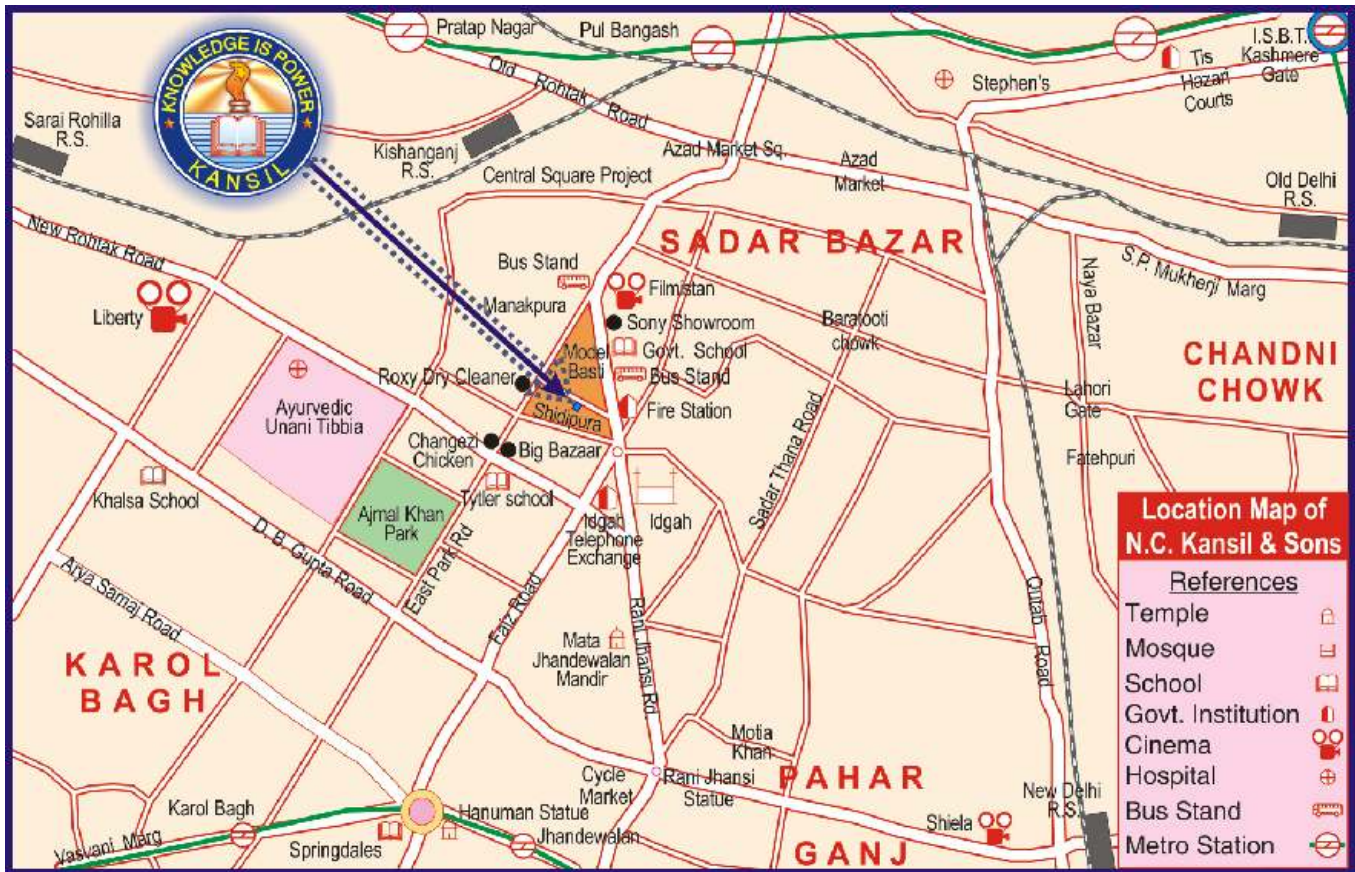
Dear Patron,

We present our new Science Catalogue for January, 2024 with great pleasure and confidence. Our products and variety is far superior and effective than those of others.

This year we have added many models in our **Zx** range of models. Please note we are owners of **Zx** range of models &  is our Trademark. Many new models have been introduced this year. Kindly scroll through the catalogue and look for  symbol to know about new products.

We have learnt from the feedback that someone has duplicated our Community Health and Environmental Sanitation Models. We suggest you to kindly look for  logo & our company hologram on the products before making purchases.

We welcome your advice and cooperation in further expanding the range of our products. We are sure that all the articles will be very useful for your Institution. Thanking you and assuring you of our best services.



CONTENTS

ITEM	Page
SCIENCE SECTION	1-18
Science & Technology Charts	1-7
Botany Charts	1-2
Zoology Charts	2-3
Chemistry Charts	3-5
Physics Charts	5-6
General Charts	7
Science & Technology Charts- Special Series, Genetics And Evolution Charts	8
Periodic Table Chart, Lab Display Charts, Lab Safety Charts	9
Food And Nutrition Charts, Life Sketch of Scientists	10
AIDS Charts, Disaster Management, Environmental Science Charts	11
Biology Models (Models on Botany, Flowers)	12
Zoology Models	13
Models on Human Anatomy	14-15
Photos of Great Personalities (Great Scientists), Lab Safety Photos	16-17
Gems of Psychology, Famous Personalities in Computer Science	18
HEALTH & HYGIENE SECTION	19-23
Health Care Series, Prevent The Diseases	19
Human Physiology Charts Laminated	20
Human Physiology Charts Synthetic	21
First Aid Charts, Some Special Charts on First Aid	22
Yogasan Charts, Map Stands	23
ANATOMICAL MODELS	24-41
Bones, Skeleton, Spine, Skull, Joints, Pelvis & Joint Section Models	24-30
Human Torso Models	30-31
Digestive System	32-33
Heart & Circulatory System	33-34
Eye	34
Respiratory System	35-36
Skin & Ear	36
Reproductive System	37
Excretory System	38
Brain & Nervous System	39
CPR Manikins, Gynae & Obstetric Models	40
Dental Models, Build Your Anatomy Models	41
HISTOLOGY & BIOMOLECULES	42-43
Muscle Fibre (Smooth, Cardiac, Skeletal) Models, DNA Model	42
Chloroplast, Mitochondria, Animal Cell, Plant Cell	42
Bacterium, Virus (Aids, Rabies, Influenza), Mitosis, Meiosis	43
SCIENCE KITS	44-46
Telescope & Binoculars, Rocket Models	44
Science Teaching Kits	44-45
Community Health Models	46
WORKING MODELS	47-52
Physics Working Models	47-50
Fun Science Kit	50
Chemistry Working Models	51
3-D Interactive Periodic Table, Biology & Robotics Working Models	52
VISUAL TEACHING AIDS	53
Projection Screens, OHP Transparencies, Slides	53
VIDEO CDs	54
Indian School Syllabus on Video CDs (Biology, Physics, Chemistry)	54

Some Tips to Study the Catalogue

Welcome! - You are about to enter the wonderfully exciting world of Teaching Aids. In the following pages of this catalogue you will come to know the products manufactured and marketed by us. Before you start browsing through them we give below some tips that will help you to study it better and effectively.

1. All the articles are manufactured in very heavy quantity by using very costly designs, dies and patterns. As such the size and description cannot be changed or altered at will. Please prepare your requirements according to the material and size mentioned in the catalogue.
2. All the articles are properly coded. Please mention the code and language.
3. The illustrations of charts are very selective. Each and every chart cannot be displayed in the catalogue. As such while placing an order please consult the detailed list mentioned therein.
4. The panorama of the Teaching Learning Material has been very well arranged subjectwise and where ever necessary we have given cross references.
5. It may be stated that the division of the catalogue i.e. Science, Social Studies, Maths is just for the sake of convenience. You may place your requirements with us all in one lot.

PLEASE NOTE

1. Customers' full satisfaction is our business policy. We are fully confident of the high standard and quality of our products.
2. To avoid delay in the execution of your order, please be careful as to mention:
 - a. The code, size & language of the map, chart, model or globe required by you.
 - b. Your complete address with pincode and telephone number.
3. The prices mentioned are nett Ex-godown including GST. Packing, Forwarding & Transportation charges extra. Please note that these prices are not M.R.P.
4. We have introduced GST codes in our catalogue- A and B. These are mentioned along with every price. GST code A means that the product is taxable @18% and GST code B means that the product is taxable @12%.
5. Please mention very clearly your exact requirements mentioning either the cost or our catalogue page No. and item code No. This will help us in processing your indents at a faster speed.
6. Images shown in the catalogue are for reference only. It may differ in colour or shade from actual product.
7. Please look for our Hologram to buy genuine products.
8. All disputes subject to Delhi Courts Jurisdiction only.

SCIENCE AND TECHNOLOGY CHARTS

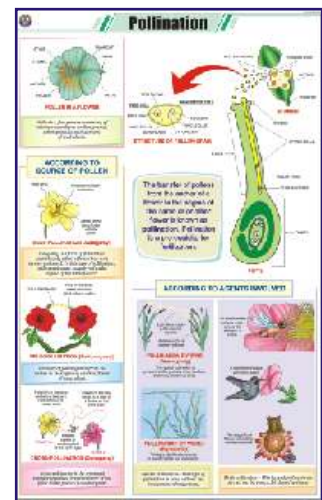
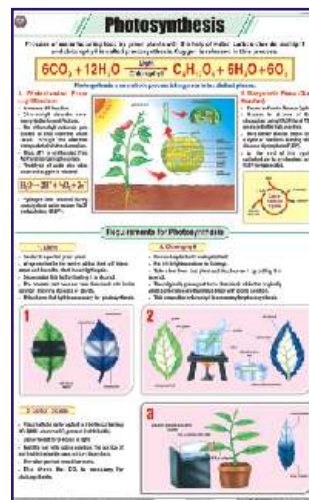
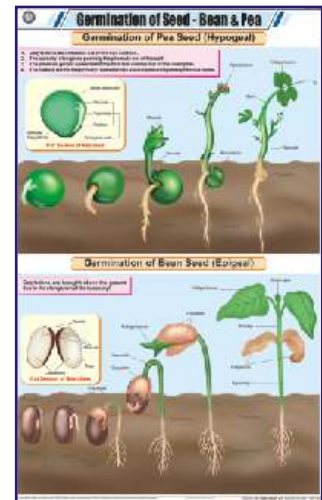
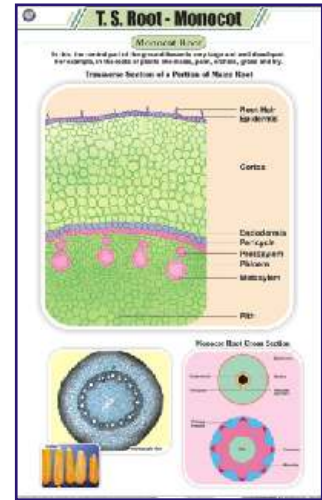
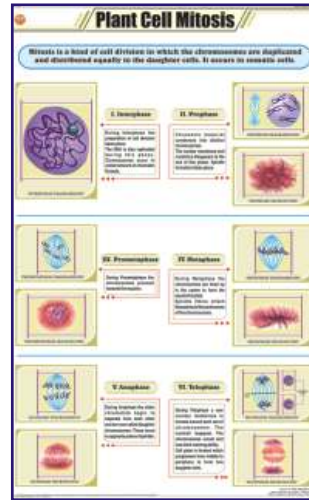
Size 58 × 90 cm (In English only)

The charts aim at familiarising students with the subject in a very realistic way and in social context. These delineate the process of life and of the technology that conditions our world today. The students will come to know the intricacies of the phenomenon and how it can be best used for the benefit of mankind. Using the latest printing technology the charts are printed on art paper in full colours and are duly laminated on both sides with thick plastic film and are fitted with plastic rollers.

BOTANY

- STB01 **Plant Kingdom** : Classification of plants, Cryptogamae, Phanerogamae.
- STB02 **Typical Plant** : Non-flowering plants, Flowering plants.
- STB03 **Typical Plant Cell** : Structure.
- STB04 **Plant Cell Organelles** : Nucleus, Cell Wall, Cell membrane, Endoplasmic reticulum, Mitochondria, Golgi bodies, Plastids, Chloroplast.
- STB05 **Plant Tissues** : Meristematic, Permanent.
- STB06 **Plant Cell Mitosis** : Cell division in plant somatic cells.
- STB07 **Plant Cell Meiosis** : Reductional cell division in plants.
- STB08 **T.S. Stem - Monocot** : Maize stem.
- STB09 **T.S. Dicot Stem (Sunflower)** : T.S. stem of Helianthus annuus.
- STB10 **T.S. Root - Monocot** : Maize root.
- STB11 **T.S. of Dicot Root** : Gram root.
- STB12 **T.S. Leaf - Monocot** : Maize, Boutelova (C4 grass), Poa annua (C3 grass).
- STB13 **T.S. Leaf - Dicot** : Mango (mesophytic), Waterlily (hydrophytic), Nerium oleander (xerophytic).
- STB14 **Types of Leaves** : Simple, Compound, Heterophyll, Phyllotaxy, Venation (parallel & reticulate).
- STB15 **Root Systems** : Tap, Fibrous, Adventitious.
- STB16 **Structure of Flower** : Parts, Symmetry & floral diagram Actinomorphic, Zygomorphic, Assymetrical, Position of floral organs.
- STB17 **Calyx and Corolla** : Calyx modifications, Shapes of corolla.
- STB18 **Inflorescences** : Racemose, Cymose.
- STB19 **Fruits & Their classification** : Parts, Classification - simple, Aggregate, Composite.
- STB20 **The Seed : Structure & Germination** : Dicot- exalbuminous & albuminous, Monocot exalbuminous & albuminous, Condition necessary for germination, Epigeal, Hypogeal.
- STB21 **Germination of Seed - Bean & Pea** : Hypogeal germination, Epigeal germination.
- STB22 **Dispersal of Fruits & Seeds** : Dispersal by - air, animals, water, explosion.
- STB23 **Photosynthesis** : Light reaction (Hill reation), Dark reaction (Calvin Benson cycle), Requirements.
- STB24 **Plant Diseases** : Black rot, Late blight, Bacterial wilt, Smut, Brown spot, TMV, Brown rust, Yellow mosaic, Red rot, Bacterial blight, Powdery mildew, Leaf curl.
- STB25 **Reproduction in Plants** : Vegetative reproduction, Spore formation, Sexual reproduction of flowering plants.
- STB26 **Pollination** : Autogamy, Geitonogamy, Xenogamy, Anemophily, Hydrophily, Biotic (zoophily).
- STB27 **Double Fertilization** : Megasporogenesis, Microsporogenesis.
- STB28 **Artificial Vegetative Propagation** : Tissue culture, Cutting, Layering, Grafting.
- STB29 **Stem Modifications** : Underground modification, Subaerial modification, Aerial modification.
- STB30 **Root Modifications** : Modifications of tap root, Adventitious root and roots for support.
- STB31 **Hydrophytes** : External features & anatomical characters.
- STB32 **Mesophytes** : General description, external features & anatomical characters.

Each Rs. 170.00 (B)



Illustrations are selective. For orders refer the list above.

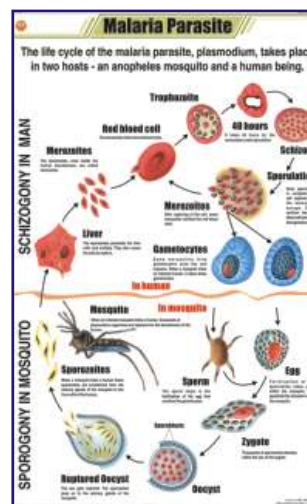
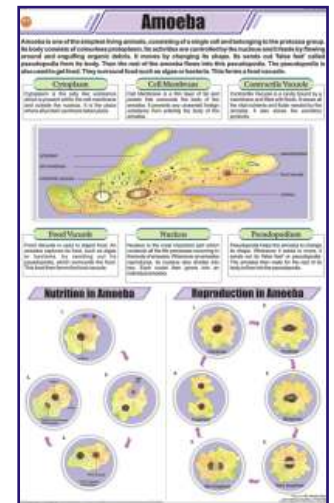
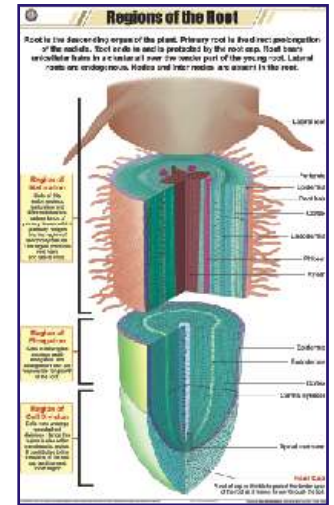
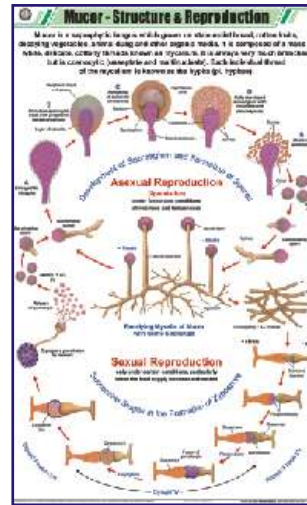
Size 58 × 90 cm (In English only)

BOTANY

- STB33 **Xerophytes (Desert Plants)** : External features & anatomical characters.
- STB34 **Insectivorous Plants** : Sundew (drosera), Venus fly-trap (dionaea), Pitcher plant (nepenthes), Bladderwort (urticularia).
- STB35 **Fungi** : Classification, Symbiotic relationships, Economic importance, Harmful effects, Animal & plant fungal diseases.
- STB36 **Algae** : Classification, Uses, Harms.
- STB37 **Viruses** : Classification, Plant and animal viral diseases.
- STB38 **Bacteria** : Classification, Shape, Respiration, Chemical nature of cell wall, Growth & reproduction, Useful activities, Diseases.
- STB39 **Life Cycle of Fern** : Life cycle of pteridophyte (fern).
- STB40 **Life Cycle of Moss** : Life cycle of bryophyte (moss).
- STB41 **Spirogyra** : Structure, Reproduction (vegetative, asexual, sexual-lateral & scalariform conjugation, germination of zygospore).
- STB42 **Life Cycle of Mushroom** : Life cycle of fungi (mushroom).
- STB43 **Leaf Modification** : Tendrils, Spines, Thorns, Bracts, Flashy Leaves, Adhesive disc, Reproductive leaf, Phyllode, Insectivory.
- STB44 **Parasitic Plants** : Holoparasites - rafflesia, Ivy broomrape, cuscuta, Hemiparasites - Indian paintbrush, mistletoe, owl's clover.
- STB45 **Mucor** : Structure & reproduction of common mold.
- STB46 **Regions of Root** : Region of maturation, Elongation and cell division.
- STB47 **Vascular Bundle** : Xylem & Phloem tissues.
- STB48 **Secondary Growth** : Stage of Secondary growth, Annual (growth) rings. Each Rs. 170.00 (B)

ZOOLOGY

- STZ01 **Animal Kingdom** : Classification in several phylum, Classification of sub-phylum vertebrata into different classes.
- STZ02 **Animal Cell** : Structure.
- STZ03 **Animal Cell Organelles** : Nucleus, Nuclear membrane, Cell membrane, Golgi bodies, Centriole, Ribosomes, Endoplasmic reticulum, Cilium, Flagellum, Mitochondria, Lysosome, Peroxisome.
- STZ04 **Animal Tissues** : Epithelial, Connective, Muscular, Nervous.
- STZ05 **Animal Cell Mitosis** : Cell division in animal somatic cells.
- STZ06 **Animal Cell Meiosis** : Reductional cell division.
- STZ07 **Gametogenesis in Animals** : Oogenesis, Spermatogenesis.
- STZ08 **Fertilization in Animals** : Structure of sperm & ovum, Fertilization process.
- STZ09 **Protozoa** : Classification into 4 classes- Rhizopoda (amoeba), Mastigophora (euglena, giardia), Ciliophora (paramecium), Sporozoa (plasmodium vivax).
- STZ10 **Amoeba** : Structure, Nutrition and reproduction.
- STZ11 **Malaria Parasite** : Life cycle of malaria parasite - plasmodium vivax.
- STZ12 **Paramecium** : Structure, Nutrition, Locomotion and reproduction.
- STZ13 **Hydra** : Structure, LS of body wall, Nematocyst, Reproduction & developmental stages.
- STZ14 **Liver Fluke** : Structure and life cycle of opisthorchis sinensis.
- STZ15 **Tapeworm** : Morphology, Anatomy and general characteristics of Taenia Solium.
- STZ16 **Roundworm (Ascaris)** : Structure, Systems.
- STZ17 **Hookworm** : Structure, Life cycle.
- STZ18 **Life History of Mosquito** : Stages of life cycle of mosquito.
- STZ19 **Life Cycle of Butterfly** : Metamorphosis of a monarch butterfly
- STZ20 **Life History of Housefly**
- STZ21 **Life History of frog**
- STZ22 **Human Blood** : Functions, Components, RBC structure, Blood group, Blood clotting.
- STZ23 **Body's Defense** : Types of Leucocytes, Vaccination, Structure of antibody, Acquired Immunity.
- STZ24 **Harmful Insects**
- STZ25 **Beneficial Insects**
- STZ26 **Food Habits of Birds** Each Rs. 170.00 (B)



Size 58 × 90 cm (In English only)

ZOOLOGY

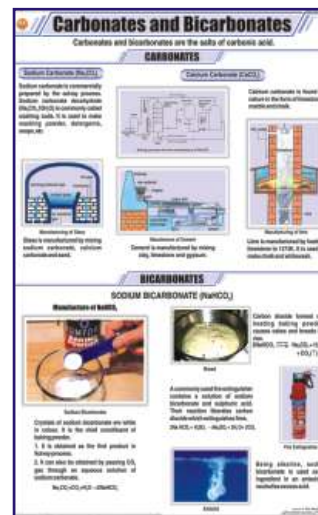
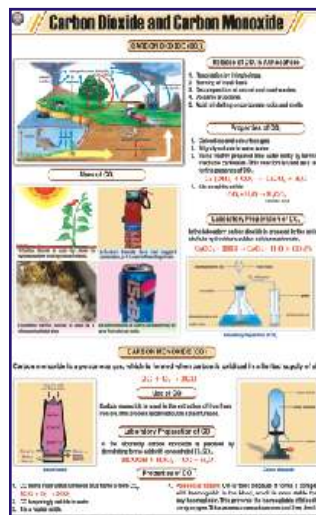
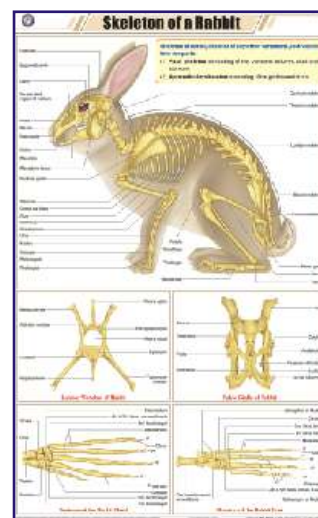
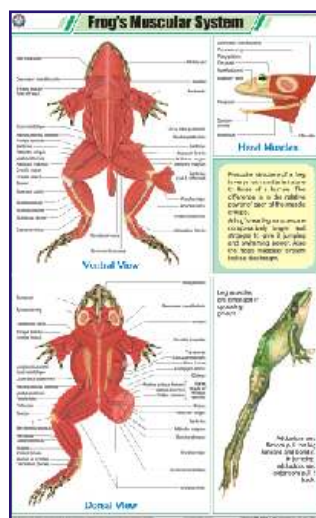
- STZ27 **Fish Anatomy** : Bony fish-general anatomy & skeletal system, Cartilaginous fish-general anatomy, Gill structure.
- STZ28 **Birth of a Bird's Chick** : Development of chick from egg.
- STZ29 **Earthworm I** : Ext. Morphology & Reproduction.
- STZ30 **Earthworm II** : Blood Circulation, Respiratory & Nervous system.
- STZ31 **Earthworm III** : Digestion, Skin & Excretion.
- STZ32 **Cockroach I** : Morphology & Reproduction.
- STZ33 **Cockroach II** : Blood Circulation, Respiratory & Nervous system.
- STZ34 **Cockroach III** : Digestion, Excretory, Skin & Muscles.
- STZ35 **Vertebrate Classes**
- STZ36 **Sense Organs** : Eye, Ear, Tongue, Skin, Nose.
- STZ37 **General Dissection of Rabbit** : Dissection of a mammal
- STZ38 **Neuron** : Structure, Synapse, Bipolar N., Unipolar N., Multipolar N.
- STZ39 **Early Development of the Frog** : 2/4/8 cell stage, blastula, gastrula, embryo.
- STZ40 **Frog's Morphology & Internal Structure**
- STZ41 **Frog's Urogenital System** : Male & Female urogenital system.
- STZ42 **Frog's Circulatory System** : Frog's heart (Bullfrog).
- STZ43 **Frog's Nervous System** : Central/Peripheral/Autonomic nervous system, Brain of frog.
- STZ44 **Frog's Muscular System**
- STZ45 **Life Cycle of Cockroach**: Stages from Ootheca to hatching to nymph to adult.
- STZ46 **Skeleton of a Bird** : Skeleton of pigeon, Anatomy of flying, Pneumatic bone of bird.
- STZ47 **Skeleton of Rabbit** : Axial & appendicular skeleton of rabbit.

Each Rs. 170.00 (B)

CHEMISTRY

- STC01 **Atom And Atomic Structure** : JJ Thompson discharge tube experiment, Rutherford's gold leaf experiment, Chadwick, Goldstein, Rutherford & Bohr's contribution.
- STC02 **Chemical Reactivity of an Element** : Reactivity series of metals.
- STC03 **Chemical Reaction & its Characteristics**
- STC04 **Classification of Chemical Reactions** : Combination reaction, Decomposition reaction, Displacement reaction, Double displacement reaction, Redox reaction, Exothermic - endothermic reaction, Photochemical reaction.
- STC05 **Valencies of Elements** : Name, symbol & valencies of natural occurring elements.
- STC06 **Chemical Bonding** : Covalent bonding (polar & non-polar), Ionic bonding, Metallic bonding, Hydrogen bonding.
- STC07 **Combustion** : Types of combustion - rapid, slow, explosion, complete, incomplete, ignition temperature.
- STC08 **Separation of Substances** : Distillation, Fractional distillation, Loading, Filtration, Churning, Evaporation & crystallisation, Magnetic separation, Sedimentation & decantation, Centrifugation, Sieving, Winnowing, Sublimation, Separating funnel.
- STC09 **Atmosphere and Composition of Air** : Layers of atmosphere, Composition of air.
- STC10 **Occurrence and Forms of Carbon**
- STC11 **Carbon dioxide and Carbon Monoxide**
- STC12 **Carbonates and Bicarbonates** : Sodium carbonate, Calcium carbonate, Sodium bicarbonate.
- STC13 **Sulphur** : Extraction, Structure, Types, Effects of heat, Vulcanisation.
- STC14 **Mole Concept** : Avagadro number, Avogadro's hypothesis.
- STC15 **Composition of Water by Weight** : Berzelius, Dulong & Dumas method, Morley's method, Proust's law.

Each Rs. 170.00 (B)



Illustrations are selective. For orders refer the list above.

Size 58 × 90 cm (In English only)

CHEMISTRY

- STC16 **Different Kinds of Cells** : Galvanic cell, Dry cell, Car battery, Rechargeable cell, Sodium sulphur battery, Solar cell, Fuel cell, Mercury zinc button cell.
- STC17 **Electroplating & Corrosion** : Silver/Gold electroplating, Mechanism of rusting.
- STC18 **Cement and Concrete** : Portland cement, Structure of concrete, Types of reinforced concrete foundations, Applications.
- STC19 **Manufacture of Glass** : Soda lime silica glass, glass moulding.
- STC20 **Alkanes** : General formula, Nomenclature, Applications, Methane molecule.
- STC21 **Alkenes** : General formula, Functional group, Structure and IUPAC names, Preparation, Applications.
- STC22 **Alkynes** : General formula, Functional group, Nomenclature, Structure & IUPAC names, Preparation, Applications.
- STC23 **Alcohols** : General formula, Functional group, Nomenclature, IUPAC names & structure, Preparation, Uses of ethanol.
- STC24 **Esters** : General formula, Nomenclature, Common esters, Preparation, Application.
- STC25 **Organic Acids** : Functional group, Common organic acids, Applications.
- STC26 **Soaps and Detergents** : Structure, Cleansing action, Problem with hard water.
- STC27 **Plastics** : Thermoplastics - PVC & polythene, Thermosetting - bakelite & melamine.
- STC28 **Synthetic Fibres** : Rayon, Polyester, Nylon, Acrylic.
- STC29 **Extraction of Iron (Blast Furnace)** : Reduction of iron ore in furnace, Manufacture of steel-basic oxygen process & electric arc process.
- STC30 **Aluminium Metallurgy** : Bayer's process, Hall-Heroult process.
- STC31 **Copper Metallurgy** : Important ores, Extraction process, Electrolysis, Uses.
- STC32 **Extraction of Zinc** : Roasting, Pyrometallurgical Process.
- STC33 **Prep. of Sodium Hydroxide & Sodium Carbonate** : Castner kellner cell, Solvay process.
- STC34 **Prep. of Nitrogen and Nitric acid** : Laboratory prep. of nitrogen & nitric acid, Cryogenic distillation, Ostwald's process.
- STC35 **Prep. of Chlorine and Hydrochloric acid**
- STC36 **Prep. of Sulphur Dioxide & Sulphuric acid** : Contact process.
- STC37 **Prep. of Ammonia and Haber Process**
- STC38 **Prep. of Oxygen and Liquefaction of Air** : Manufacture of O₂ by heating, electrolysis of water, liquefaction of air.
- STC39 **Prep. of H₂ & CO₂** : Lab preparation of hydrogen and carbon dioxide, Steam re-forming of natural gas.
- STC40 **Manufacture of Bleaching Powder** : Hasenclever plant, Bachmann's plant.
- STC41 **Manufacture of Phosphorus** : Manufacture of while phosphorus and red phosphorus.
- STC42 **Crystal Lattices** : Various crystal system, their unit cells, variations & examples.
- STC43 **Close Packed Structures** : Close packing in 2D & 3D, voids.
- STC44 **Sodium Chloride Crystal** : Formation of NaCl crystal, Crystal fracture, FCC arrangement, Dissociation.
- STC45 **Acids, Bases and Salts** : Properties & characteristics of acids, bases and salts.
- STC46 **Electrolysis** : Electrolysis of molten NaCl, Faraday's laws of electrolysis, Refining, Electroplating.
- STC47 **Atoms and Molecules** : Atomic No, Mass No, Istopes, Isobars, Isotones, Molecules, Chemical formula.
- STC48 **Solids, Liquids & Gases** : Forms of matter, Change of state.

Each Rs. 170.00 (B)

Mole Concept

1 mole = 6.02214 × 10²³ particles

THE MOLE CONCEPT

Element	Atomic Mass (g/mol)	Molar Mass (g/mol)
H	1.008	1.008
C	12.011	12.011
O	15.999	15.999
Al	26.982	26.982
Fe	55.845	55.845
Cu	63.546	63.546
Zn	65.38	65.38
Ag	107.868	107.868
Au	196.967	196.967

MOLE CONCEPT

1 mole of a substance contains 6.02214 × 10²³ particles.

MOLE CONCEPT

1 mole of a substance contains 6.02214 × 10²³ particles.

BLAST FURNACE

Reduction of iron ore in furnace

MANUFACTURE OF STEEL

Basic oxygen process

MANUFACTURE OF STEEL

Basic oxygen process

Extraction of Zinc

Roasting, Pyrometallurgical Process

Extraction of Zinc

Roasting, Pyrometallurgical Process

Manufacture of Phosphorus

Production of White Phosphorus

Manufacture of Phosphorus

Production of White Phosphorus

Sodium Chloride Crystal

Formation of NaCl crystal, Crystal fracture, FCC arrangement, Dissociation.

Sodium Chloride Crystal

Formation of NaCl crystal, Crystal fracture, FCC arrangement, Dissociation.

Acids, Bases and Salts

Properties & characteristics of acids, bases and salts.

Acids, Bases and Salts

Properties & characteristics of acids, bases and salts.

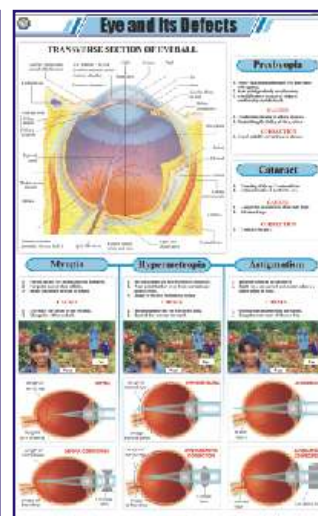
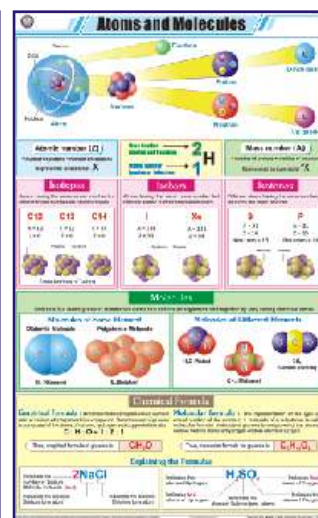
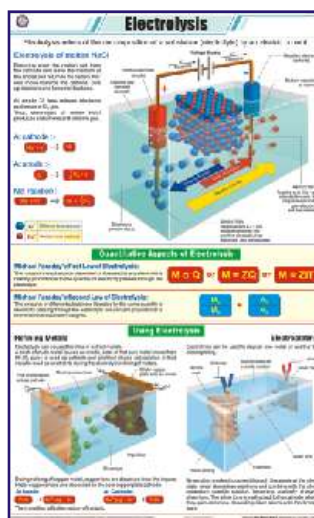
Size 58 × 90 cm (In English only)

CHEMISTRY

- STC49 **Shapes of Atomic Orbitals** : Quantum numbers, Shapes of s, p, d & f orbitals.
- STC50 **Chemical Equilibrium** : Law of chemical equilibrium, Chemical equilibrium constant, Factors affecting equilibrium. **NEW**
- STC51 **Kinetic Theory** : Physical properties of matter at molecular level according to kinetic theory of gases. **NEW**
- STC52 **Electronic Configuration** : Atomic no, Mass no, Electronic configuration of first 20 elements. **NEW** Each Rs. 170.00 (B)

PHYSICS

- STP01 **Motion** : Linear motion - rectilinear, curvilinear; Rotational motion, Oscillatory motion, Periodic motion.
- STP02 **Changes Around Us** : Slow-fast, Reversible - irreversible, Periodic - non-periodic, Desirable - non desirable, Physical - chemical changes.
- STP03 **Metric Weights and Measures** : SI units & their multiples & submultiples.
- STP04 **Measurements** : Standard systems, measuring methods.
- STP05 **Sound** : What is sound?, Decibel scale of different sounds, Characteristics of sound, Sonic boom, Ultrasound & echo.
- STP06 **Wave Motion** : Transverse wave, Longitudinal wave, examples.
- STP07 **Simple Machine** : Lever, Pulley, Wedge, Inclined plane, Screw, Wheel & Axle.
- STP08 **The Lever** : Lever of - first class, second class, third class.
- STP09 **Principle of Archimedes**
- STP10 **Pascal's Law** : Law & its applications, hydraulic press, braking system.
- STP11 **Reflection of Light** : Laws of reflection, Image formation by plane & spherical mirrors.
- STP12 **Refraction Through a Glass Slab** : Lateral displacement, Refractive index, Refraction through different mediums, Total internal reflection - looming & mirage.
- STP13 **Refraction Through Prisms** : Dispersion, Refraction through equilateral prism, Re-combination of spectrum colours, Rainbow.
- STP14 **Refraction of Light Through lenses** : Image formation by concave and convex lenses.
- STP15 **Optical Instruments** : Slide projector, Binoculars, Telescope, Compound microscope, Magnifying glass camera, Periscope.
- STP16 **Microscope** : Compound and Electron microscope, Ray diagram.
- STP17 **Telescope** : Refracting telescope, Ray diagram of refracting & reflecting (cassegrain) telescope.
- STP18 **Eye and its Defects** : TS of eyeball, Presbyopia, Cataract, Myopia (near sightedness), Hypermetropia (far sightedness), Astigmatism.
- STP19 **Electric Current-Sources-Effects** : Sources - Voltaic cell, Daniel cell, Dry cell. Effects - Heating, Lighting, Chemical, Magnetic.
- STP20 **Static Electricity** : Electrostatic induction, Lightning spark, Photocopier.
- STP21 **Current Electricity** : Electric current, Conventional current, voltaic cell, Wiring of a plug, Transmission of electricity, Electric circuit inside a torch and a house.
- STP22 **Ohm's Law & Electrical Resistance** : Ohm's law, Factors affecting resistance, Resistance of series and parallel combination.
- STP23 **Electric Circuit's Components Symbols**
- STP24 **Magnetism** : Earth's magnetic field, Magnetic compass, Types of magnets, Theory of magnetism, Van allen radiation belt.
- STP25 **Properties of a Magnet, Making a Magnet** : Electromagnet, single/double touch method, solenoid, properties, storage & handing, magnetic induction, repulsion - test for magnetism.
- STP26 **Electromagnetism** : Oersted's experiment, Magnetic field of a current carrying conductor maxwell's right hand grip rule, Fleming's left hand rule (motor effect), Applications. Each Rs. 170.00 (B)



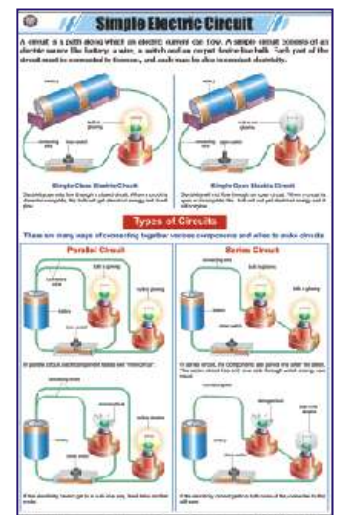
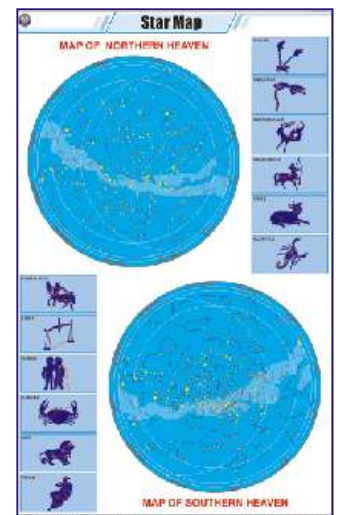
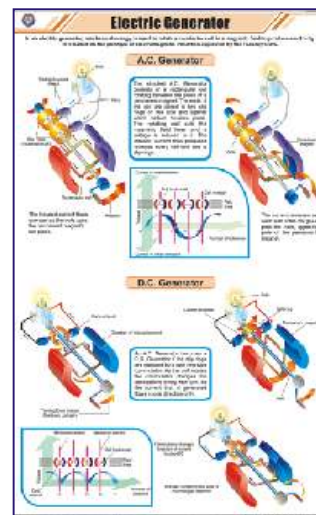
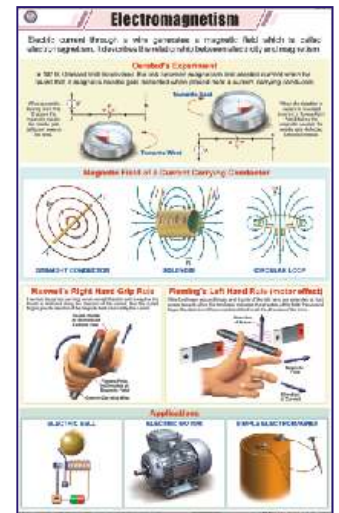
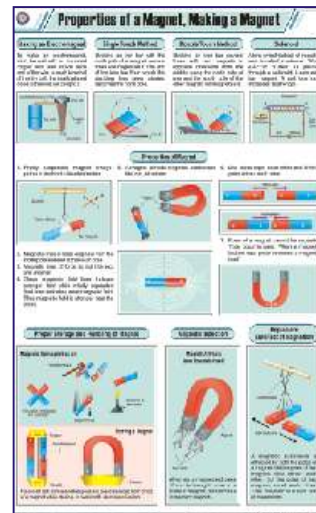
(B) - GST@12% is included in the price.

Size 58 × 90 cm (In English only)

PHYSICS

- STP27 **Electromagnetic Induction** : Induction using bar magnet, Self-induction, Mutual induction, Fleming's right hand rule, Applications.
- STP28 **Electric Motor** : simple DC & AC motor, commercial electric motor, applications.
- STP29 **Electric Bell** : Working principle of an electric bell.
- STP30 **Electric Generator** : AC & DC generator.
- STP31 **Dynamo** : Dynamo principle, Bicycle bottle dynamo, Faraday's disc dynamo, Pixii's commutated DC dynamo.
- STP32 **Force** : Effects of force, Combining force.
- STP33 **Friction** : Static, kinetic & rolling friction. Advantages & disadvantages of friction, Methods of increasing or reducing friction.
- STP34 **Gravitation** : Universal law of gravitation, Gravitational constant G, Acceleration due to gravity, Weight, Weightlessness.
- STP35 **Moment and Couple** : Moment (Torque), Principle of moment, Couple & its applications.
- STP36 **Work and Power** : Work & power explained, special causes for work done.
- STP37 **Nuclear Fusion** : Proton-Proton chain, CNO cycle, Controlled fusion, Hydrogen bomb.
- STP38 **Nuclear Fission** : Chain reaction, Spontaneous fission, Controlled fission, Neutron induced fission, Breeding plutonium-239, Enrichment of nuclear fuel.
- STP39 **Nuclear Reactor** : Pressurized water reactor, Fast nuclear reactor.
- STP40 **Radioactivity** : Types of radioactive radiations, Penetrating power, Carbon dating, Decay of uranium-238.
- STP41 **Radio Telescope** : Radio telescope, Astronomical interferometers.
- STP42 **X-Ray** : Characteristics, production and uses of X-rays.
- STP43 **Television** : Picture tube, color triplets, transmission mechanism.
- STP44 **Multistage Rocket** : Stage principle, chemical rocket types, component of rocket system, engine operation.
- STP45 **Wind Mill** : Typical windmill, principle, horizontal & vertical axis wind turbine.
- STP46 **Petrol Engine** : Four stroke petrol engine and its working.
- STP47 **Steam Engine** : Simple steam engine working and principle.
- STP48 **Diode** : Types & symbols.
- STP49 **Universe I (Life Cycle of a Star)**
- STP50 **Universe II (Comets & Meteors)** : Structure of comet, Meteorite strike, Types of meteorites.
- STP51 **Star Map** : Star map of northern and southern heaven, 12 star constellation.
- STP52 **Newton's Laws of Motion** : Newton's first, Second & third law of motion.
- STP53 **Simple Electric Circuit** : Open & close circuit, Parallel circuit, Series circuit.
- STP54 **Measuring instruments** : Screw gauge, vernier caliper, cathode ray oscilloscope, spectrometer, calorimeter, voltmeter, ammeter, galvanometer. **NEW**
- STP55 **Energy** : Types of energies, law of conservation, mechanical energy - Kinetic energy & Potential Energy. **NEW**
- STP56 **Heat and temperature** : SI units, volumetric expansion, specific heat, latent heat, conduction, convection, radiation, temperature & thermal equilibrium, celsius, fahrenheit, kelvin scales. **NEW**
- STP57 **Different Types of Satellite** : Weather, communication, astronomical, remote sensing, earth observation, navigation, miniaturised satellites. **NEW**

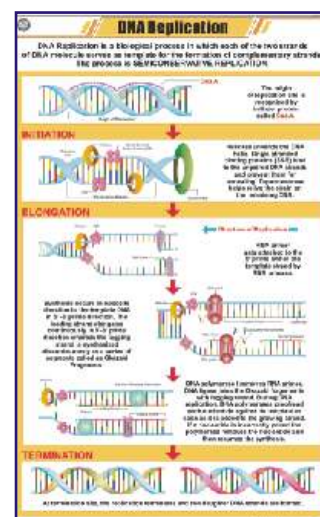
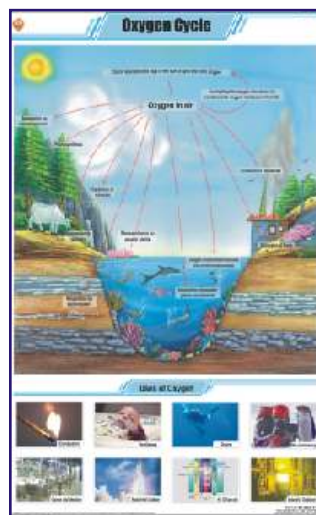
Each Rs. 170.00 (B)



Size 58 × 90 cm (In English only)

GENERAL

- STG01 **The Cell Theory** : Prokaryotic, Eukaryotic, Unicellular, Multicellular, Cell theory.
- STG02 **DNA** : Z DNA, B DNA, Double helix structure, Nucleotide.
- STG03 **RNA** : rRNA, mRNA, tRNA, Flow of genetic information, Virus structure.
- STG04 **Levels of Organization**
- STG05 **Origin of Life** : Miller and Urey experiment, Steps in origin of life, Coacervates.
- STG06 **Cellular Respiration (Kreb's Cycle)** : Glycolysis, Krebs TCA cycle, electron transport chain.
- STG07 **Animal Husbandry** : Breeding, Feeding, Weeding, Heeding.
- STG08 **Economic Plants**
- STG09 **Basic Agricultural Practices**
- STG10 **Medicinal Plants - I**
- STG11 **Medicinal Plants - II**
- STG12 **Energy Needs** : Hydro, Chemical, Solar, Wind, Bio, Magnetic, Nuclear, Sound & Light energy.
- STG13 **Fossil Fuels** : Types-solid, liquid, gaseous, calorific value, characteristics coal & petroleum, Fractional distillation.
- STG14 **Petroleum & Natural Gas** : Formation of petroleum, Oil drilling, Fractional distillation.
- STG15 **Renewable Sources of Energy**
- STG16 **Nuclear Energy** : Nuclear energy power plant, Fission, Fusion, Atomic bomb, Hydrogen bomb, Uses, Effects.
- STG17 **Bio-Gas** : Fixed dome type, Floating gas holder type.
- STG18 **Nitrogen Cycle**
- STG19 **Oxygen Cycle**
- STG20 **Carbon Cycle**
- STG21 **Fire & Fire Extinguishers** : Classification of fire, Uses of fire extinguisher, Types of fire extinguishers. Water-CO₂ type, Mechanical foam (AFFF) type, Dry chemical powder (DCP) type, Carbon dioxide type.
- STG22 **Soil- A natural Resource** : Uses, Soil erosion, Soil conservation, Soil pollution.
- STG23 **How Soil is formed and Soil Profile** : Agents of weathering, Layers of soil.
- STG24 **Types of Soils in India**
- STG25 **Food Chain in Forest Ecosystem** : Simple food chain, Food web.
- STG26 **Solar Cooker** : Solar cooker, - Box type, Parabolic type, Panel type.
- STG27 **Water Harvesting**
- STG28 **Purification of Water** : Boiling, Distillation, Filtration, Chlorination, Reverse osmosis, Domestic RO system.
- STG29 **Poultry** : Indegenious breeds, Exotic breeds, Equipments, Behaviour under brooders.
- STG30 **Sericulture (L.H. Silkworm)** : Stages of silk production, Life cycle of bombyx mori.
- STG31 **Apiculture (L.H. Honeybee)** : Queen honey bee, Artificial bee hive, Honey extractor & extraction.
- STG32 **Food Pyramid** : Food pyramid, Components, Balanced diet.
- STG33 **Microorganisms**
- STG34 **Mutation** : Insertion, Duplication, Deletion, Inversion, Translocation, Frame shift, Point mutation.
- STG35 **Enzymes** : Structure, Mechanism, Classification, Enzyme activity.
- STG36 **DNA Replication** : Initiation, Elongation, Termination.
- STG37 **Osmosis** : Molecular view, osmosis in isotonic, hypotonic and hypertonic solutions.
- STG38 **Evidence of the Evolution of Life** : Fossil record, anatomical comparison, comparative embryology.
- STG39 **Food Chain in Pond Ecosystem**
- STG40 **Food Chain in Desert Ecosystem**



Each Rs. 170.00 (B)

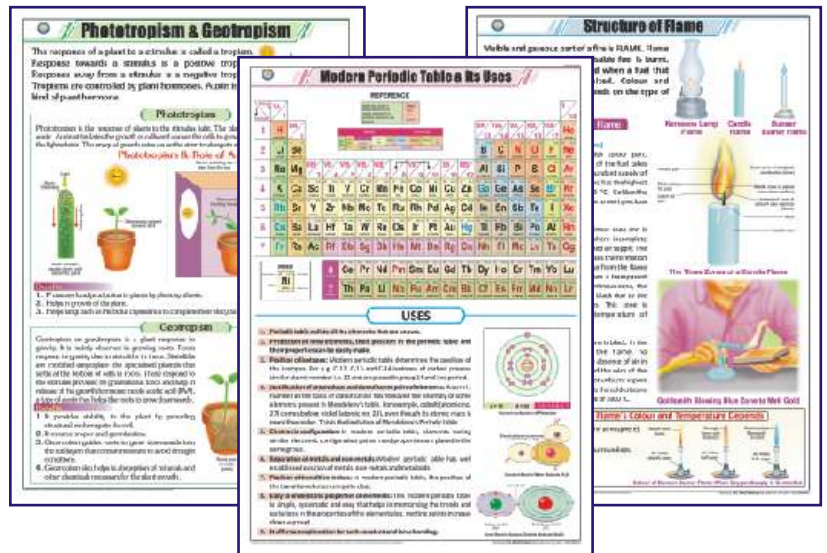
These charts are highly illustrative.

SCIENCE & TECHNOLOGY CHARTS- SPECIAL SERIES



Printed on Polyart Synthetic Paper. Size 70 x 100 cm. Price Rs. 392.00 (B) Each

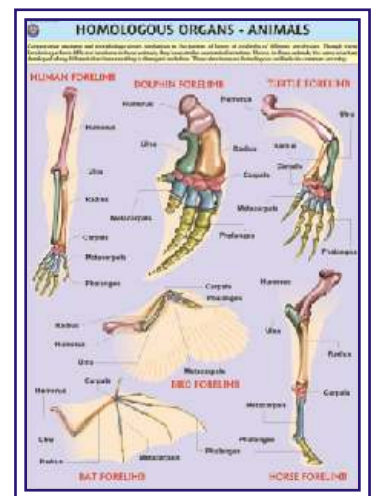
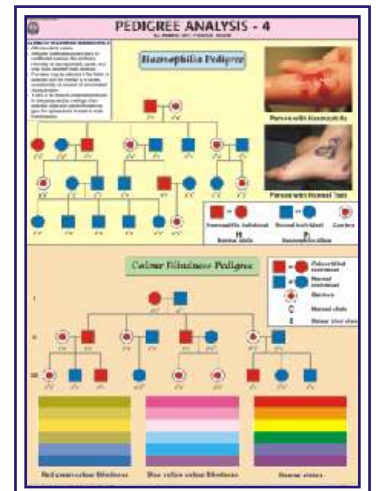
- STB500-SM Chloroplast
- STB501-SM Phototropism & Geotropism
- STC500-SM Modern Periodic Table & Its Uses
- STC501-SM Dobereiner's Triads
- STC502-SM Newlands' Octaves Periodic Table
- STC503-SM Discovery of Proton Neutron Electron
- STC504-SM Structure of Flame
- STG500-SM Citric Acid Cycle
- STG501-SM Mitochondria
- STP500-SM Sonar



GENETICS AND EVOLUTION CHARTS

Printed on Polyart Synthetic Paper. Size 70 x 100 cm. Price Rs. 224.00 (B) Each

- GE01S **Pedigree Analysis-1** : showing standard symbols used in Pedigree Analysis and Sample Pedigree.
- GE02S **Pedigree Analysis-2** : showing Autosomal Dominant Trait Pedigree such as Myotonic Dystrophy and Tongue Curler Pedigree.
- GE03S **Pedigree Analysis-3** : showing Autosomal Recessive Trait Pedigree such as Inheritance of Attached Ear Lobe and Inheritance of Sickle Cell Anaemia.
- GE04S **Pedigree Analysis-4** : showing X-linked Recessive Trait Pedigree such as Haemophilia and Colour Blindness Pedigree.
- GE05S **Pedigree Analysis-5** : showing X-linked Dominant Trait Pedigree such as Hypophosphatemia and Droopy Eyelids Pedigree.
- GE06S **Pedigree Analysis-6** : showing Y-linked Trait - Hairy Ear and Mitochondrial Inheritance Pedigree.
- GE07S **Homologous Organs - Animals**: showing Forelimbs of Bat, Turtle, Horse, Human, Bird and Dolphin demonstrating Homology.
- GE08S **Analogous Organs - Animals**: showing Wings of Bird, Butterfly, Pterosaur and Bat demonstrating Analogy.
- GE09S **Homologous Organs - Plants**: showing thorn of Bougainvillea, tendrils of Cucurbita, fleshy cylindrical stem of Euphorbia, fleshy flattened stem of Opuntia, leafy shoots of Chrysanthemum and pineapple representing Plant Homology.
- GE10S **Analogous Organs - Plants**: showing thorn of Pyracantha, spine of Berberis vulgaris, prickles of Prosopis grandulosa and stipular spines of Black Locust representing Plant Analogy.
- GE11S **Hybridisation-1 (Monohybrid Cross)** : Cross between Purple coloured and White coloured flower Pea Plant demonstrating inheritance of one dominant character and expression of recessive parental trait without blending in F2 generation.
- GE12S **Hybridisation-2 (Dihybrid Cross)** : Cross between Pea Plants differing in two traits (pod colour & plant height) showing segregation of one pair of character is independent of the other pair of characters.
- GE13S **Hybridisation-3 (Incomplete Dominance)** : Cross between true breeding Red and White Snapdragon flower plants showing one character is not completely dominant over other.



CHEMISTRY LAB DISPLAY CHARTS

PERIODIC CHART OF ELEMENTS



A Most detailed chart printed in multi colours showing Solids, Liquids and Gases in separate distinctive colours together with their Atomic Numbers, Density, Atomic Radius, Melting Point, Electronic Structure, Electro negativity, First Ionization Energy, Oxidation State and Crystal structure.

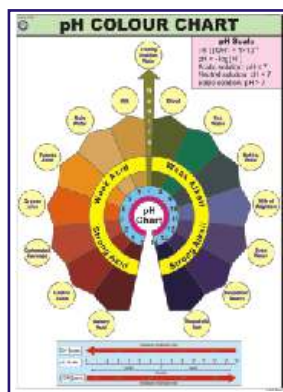


- PT01 Size 140 × 100 cm Laminated Rs. 364.00 (B)
- PT02 Size 100 × 70 cm Laminated Rs. 158.00 (B)
- PT03S Size 100 × 70 cm Synthetic Rs. 224.00 (B)
- PT04 Size 50 × 35 cm Paper Rs. 12.00 (B)
- PT05 Size 50 × 35 cm Laminated w/o rollers Rs. 32.00 (B)
- PT06 Size 100 × 75 cm Paper folded in Book form Rs. 45.00 (B)
- PT07S Size 100 x 70 cm Mendeleev's Periodic Chart Synthetic Rs. 224.00 (B)
- PT08 Size 90 × 55 cm Laminated Rs. 164.00 (B)

PT09 Size 96 x 70 cm Periodic Chart Elementary RS. 164.00 (B)

FOR 3-D INTERACTIVE PERIODIC TABLE

Please see page S-52



LABORATORY SAFETY
Price Rs. 224.00 (B)
Showing basic safety measures to be followed while working in a chemistry laboratory. Printed on Polyart Synthetic Paper. Size 70 x 100 cm. Code CL01S

LABORATORY TECHNIQUES
Price Rs. 224.00 (B)
Showing various procedures and techniques generally used in a chemistry laboratory. Printed on Polyart Synthetic Paper. Size 70 x 100 cm. Code CL02S

pH COLOUR CHART
Price Rs. 224.00 (B)
Reference colours indicated by universal indicator with different acidic or basic substances to show their approximate ph values. Printed on Polyart Synthetic Paper. Size 70 x 100 cm. Code CL03S

LABORATORY FIRST AID
Price Rs. 224.00 (B)
Showing various first aid techniques and procedures used during an accident in a Laboratory. Printed on Polyart Synthetic Paper. Size 70 x 100 cm. Code CL04S

LAB SAFETY CHARTS

Size 30 × 45 cm, Printed on 300 gsm art paper & lamination on both sides.

- LSC01 Protect yourself, Dress appropriately
- LSC02 Always wash your hands before and after the experiment
- LSC03 Keep the testing area and vessels clean before & after the experiment
- LSC04 Never eat or drink while performing experiments
- LSC05 Avoid using glassware that is cracked or chipped
- LSC06 Keep your face away from reaction vessels
- LSC07 Never suck liquid chemicals by mouth, Use a pipette bulb
- LSC08 Beware! Hot & cold look a like
- LSC09 Never touch or taste chemicals
- LSC10 Always experiment under supervision, Inform supervisor in case of accident
- LSC11 Act responsibly, Don't fool around in the laboratory
- LSC12 Always keep the fire extinguisher & first aid box within reach



LSC_12 complete set of above 12 charts Price Rs. 672.00 (B) per set of 12

Laminated with thick plastic film on both sides & fitted with superior plastic rollers.

CHARTS ON FOOD AND NUTRITION

Size 70 x 100 cm. English & Hindi combined. Laminated Each Rs. 180.00 (B)

- FN01 OUR FOOD** : Chart shows various components and functions of food. It also illustrates food pyramid mentioning balance diet and daily requirement of nutrients by different age groups.
- FN02 PROTEINS** : Chart shows both animal and plant sources of protein. It also explains various functions performed by proteins in our body and some special conditions of high protein needs.
- FN03 FATS** : Chart shows a brief classification of fats with a mention of essential fatty acids. It also shows some of the important functions and sources of fats.
- FN04 CARBOHYDRATES** : Chart shows classification of carbohydrates as simple and complex with their various functions in the body. It also shows various foods rich in carbohydrates.
- FN05 VITAMINS** : Good explanatory chart depicting both fat soluble and water soluble vitamins with their various sources and reasons of requirement in the body.
- FN06 MINERALS** : Important minerals like Sodium, Iron, Calcium, Iodine etc. required in our body to live a healthy life are shown in the chart. Chart also shows various functions they perform and their sources.
- FN07 WATER & ROUGHAGE** : Chart shows the importance of water and roughage and some major functions performed by them in the body. Chart also gives a good knowledge about their sources.
- FN08 DEFICIENCY DISEASES** : Chart shows the havoc conditions arised due to deficiency of various nutrients in the body and their symptoms. The understanding of chart will indicate the importance of good balanced diet.
- FN09 OVERNUTRITION DISORDERS** : Chart shows that not only deficiency but also the over consumption of food is not good for health. Various overnutritional disorders with their causes and symptoms are depicted in the chart.
- FN10 Food's Nutritive Value** : Chart shows the nutrient's composition of various common foodstuffs in a tabular form.

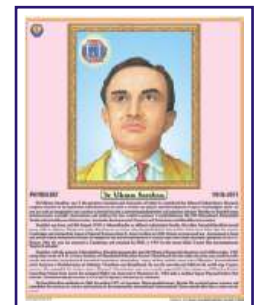


LIFE SKETCH OF SCIENTISTS

Size 45 x 57 cm Approx. Laminated and fitted with plastic rollers.



- | | | |
|-----------------------|---------------------|---------------------|
| LSS01 Albert Einstein | LSS08 H.J. Bhabha | LSS15 Raja Ramanna |
| LSS02 A.P.J. Kalam | LSS09 J.C. Bose | LSS16 Ramanujan |
| LSS03 Archimedes | LSS10 Louis Pasteur | LSS17 Rutherford |
| LSS04 Birbal Sahni | LSS11 Madam Curie | LSS18 S.N. Bose |
| LSS05 C.V. Raman | LSS12 Meghnad Saha | LSS19 Sarabhai |
| LSS06 Darwin | LSS13 Mendeleev | LSS20 Thomas Edison |
| LSS07 Galileo Galilie | LSS14 Newton | |



(Available in English as well as in Hindi) Each Rs. 90.00 (B)
 (Above product code is for English. Please add H to the code for Hindi)

CHARTS ON AIDS

Printed on Polyart Synthetic Paper. Size 70 x 100 cm. Price Rs. 224.00 (B) Each

- AS01S **HIV** : showing structure and mechanism of infection of Human Immunodeficiency Virus
- AS02S **Transmission of HIV** : explaining different ways which can spread the HIV infection and cause AIDS.
- AS03S **Prevention** : showing various measures which, when adopted, prevent transmission of HIV infection.
- AS04S **How AIDS is not transmitted** : showing various routine tasks which are not involved in transmission of HIV.
- AS05S **Progress of Infection** : showing how HIV infection typically progresses through various stages.
- AS06S **Opportunistic Diseases** : depicting complications which an AIDS patient develops that otherwise wouldn't normally occur in a person with a healthy immune system.
- AS07S **Sexually Transmitted Diseases** : showing various sexually transmitted diseases which increase the chances of acquiring HIV infection by an individual when exposed to the virus.
- HP26S **Human Immune System** : showing different organs involved in a healthy immune mechanism. As AIDS progressively weakens the immune system, chart gives an outline of functions of Immune System to better understand what AIDS can do.



DISASTER MANAGEMENT CHARTS

Size 70 x 100 cm. English & Hindi combined. Laminated Each Rs. 180.00 (B)

- DMS01 What is a Disaster
- DMS02 Disaster Management Cycle-1 **NEW**
- DMS03 Disaster Management Cycle-2 **NEW**
- DMS04 Earthquake
- DMS05 Tsunami
- DMS06 Flood
- DMS07 Cyclone
- DMS08 Forest Fire
- DMS09 Landslide **NEW**
- DMS10 Nuclear Disaster **NEW**
- DMS11 Chemical Disaster **NEW**
- DMS12 Biological Disaster **NEW**



ENVIRONMENTAL SCIENCE

Size 50 x 70 cm. English. Laminated Each Rs. 112.00 (B)

- ES01 Garbage Management **NEW**
- ES02 Sewage Treatment Plant **NEW**
- ES03 Global warming & Greenhouse effect **NEW**



BIOLOGY MODELS

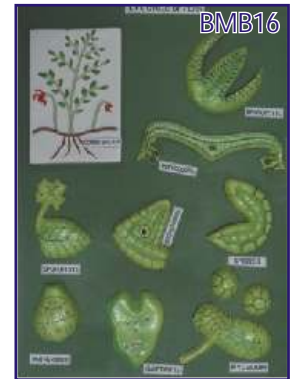
BOTANY MODELS

Made of Fiber Glass on MDF Board. Each Model size 60 x 45 cm Price Rs. 2242.00 (A) each

- BMB01 Plant Cell
- BMB02 Germination of Seed
- BMB03 Fertilization & Angiosperms
- BMB04 Plant Cell Meiosis
- BMB05 Plant Cell Mitosis
- BMB06 L. S. Flower
- BMB07 L. S. Ovary

- BMB08 T. S. Monocot Root
- BMB09 T. S. Dicot Root
- BMB10 T. S. Monocot Stem
- BMB11 T. S. Dicot Stem
- BMB12 T. S. Monocot Leaf
- BMB13 T. S. Dicot Leaf
- BMB14 Root Tip

- BMB15 Life Cycle : Moss
- BMB16 Life Cycle : Fern
- BMB17 Life Cycle : Fungus
- BMB18 Spirogyra
- BMB19 Pitcher Plant
- BMB20 Funaria Plant



ZX-2200E

Types of Ovules

- Price Rs. 3422.00 (A)
- 4 pieces model on board.
- Model shows anatropous, orthotropous, amphitropous and hemi-anatropous ovules.
- Size : 45x60x3
- 9 parts labeled in total.



ZX-2600E

L.H. of Angiosperm

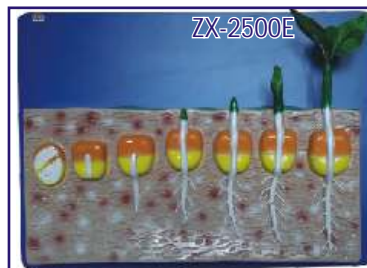
- Price Rs. 3422.00 (A)
- Model is a set of 19 piece.
- Model is mounted on board to show the life cycle of an angiosperm.
- Size : 60x45x3 cm.
- 13 parts labeled in total.



ZX-2500E

Monocot Seed Germination

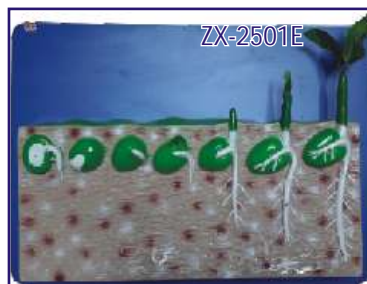
- Price Rs. 3127.00 (A)
- Stages of germination (Hypogeal) in maize is shown.
- Mounted on wooden base.
- Size: 56 x 41 x 9 cm
- 8 parts labeled in total



ZX-2501E

Dicot Seed Germination

- Price Rs. 3127.00 (A)
- Stages of germination (Hypogeal) in pea is shown.
- Mounted on wooden base.
- Size: 56 x 41 x 9 cm.
- 8 parts labeled in total



MODELS OF FLOWERS



Made of Fiber Glass on stand.

Price Rs. 1534.00 (A) each

- BMF01 Typical Flower
- BMF02 Liliaceae Flower
- BMF03 Rosaceae Flower

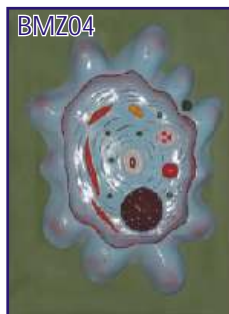
ZOOLOGY MODELS

Made of Fiber Glass on MDF Board. Each Model Size 60 x 45 cm Price Rs. 2242.00 (A) each

- BMZ01 Animal Cell
- BMZ02 Animal Cell Meiosis
- BMZ03 Animal Cell Mitosis
- BMZ04 Amoeba
- BMZ05 Paramecium
- BMZ06 Hydra
- BMZ07 Euglena

- BMZ08 Malarial Parasite
- BMZ09 Bacteria
- BMZ10 Virus
- BMZ11 Frog Dissection
- BMZ12 Rat Dissection
- BMZ13 Fish Dissection
- BMZ14 Rabbit Dissection

- BMZ15 Development of Frog
- BMZ16 Life History of Silk Worm
- BMZ17 Life History of Mosquito
- BMZ18 Life History of Honey Bee
- BMZ19 Life History of Butterfly
- BMZ20 Life Cycle of Tapeworm



ZX-3200E Tape Worm

- Price Rs. 6726.00 (A)
- Set of 8 pieces mounted on board shows scolices of beef tapeworm (*Taenia Saginata*), pork tapeworm (*Taenia Solium*), mature egg, larval stage tapeworm and longitudinal sections of gravid, immature and mature proglottid.
- Size: 55x40x6 cm.
- 27 parts labeled in total.

ZX-3201 HYDRA

- Price Rs. 2950.00 (A)
- 4 piece model mounted on board.
- Anatomical features shown include ectoderm, mesoglea, coelenteron, male testis and female egg cells, buds, hypostome, nematoblast cells, cnidoblast etc.
- 28 parts are labeled in total.

ZX-3213PN Frog Dissection Model

- Price Rs. 4720.00 (A)
- Size: 39x33.5x14 cm.
- Made of plastic.
- 67 parts labelled in total.
- Supplied with plastic base for display.
- Shows dissected ventral and dorsal side views.

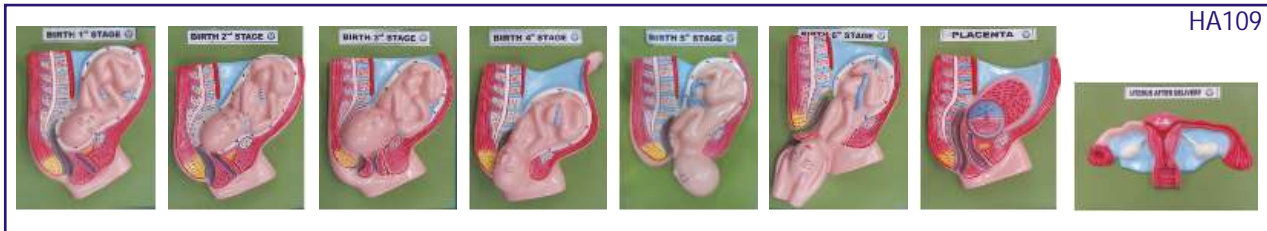


ZX-3208E Bony Fish General Anatomy

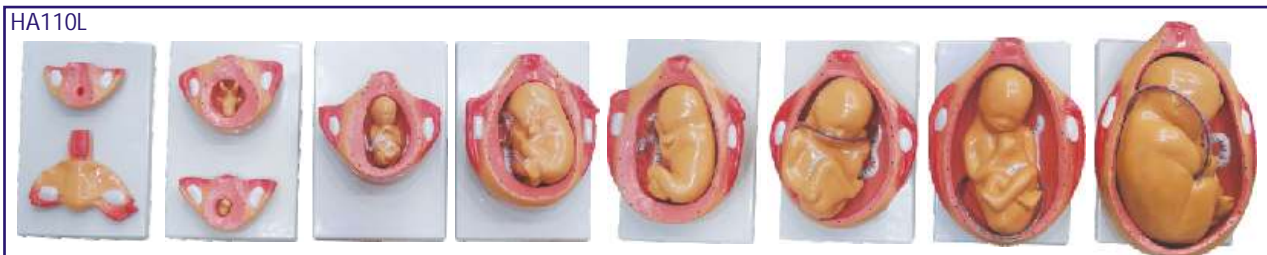
- Price Rs. 6962.00 (A)
- Replica of a bony fish (perch) on stand.
- Longitudinally dissected in 5 parts.
- External features are shown on one side & internal anatomy is on other side.
- Removable parts are magnetically secured in position.
- 42 parts labeled in total. Life size.

SPECIAL MODELS ON HUMAN ANATOMY

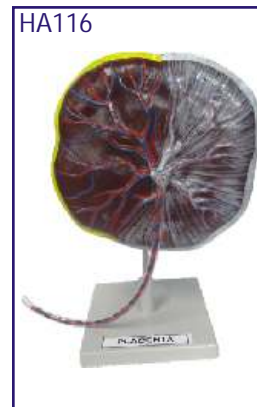
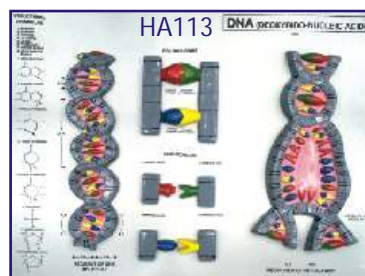
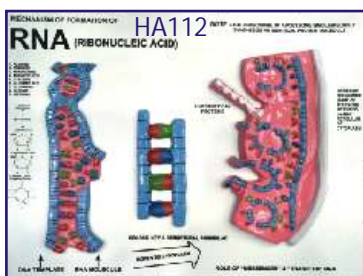
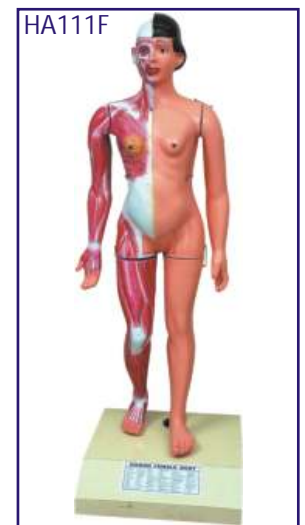
- HA101A **HUMAN BODY TORSO** - Torso with head with detachable internal structure of Head and neck, Organs of Thorax and abdomen cavities of the viscera can be emptied, for study of blood vessels. Dissectable in 12 parts made of Fibre Glass painted in natural colours. Made of Fiber Glass. Magnetic. Life Size Rs. 11210.00 (A)
- HA101 **HUMAN BODY** - Torso with head with detachable internal structure of Head and neck, Organs of Thorax and abdomen cavities of the viscera can be emptied, for study of blood vessels. Dissectable in 12 parts made of Fibre Glass painted in natural colours. Made of Fiber Glass. Life Size Non magnetic. Rs. 8850.00 (A)
- HA101U **Human Body**- Torso Life size unisex Rs. 13865.00 (A)
- HA102 **Human Body** - Torso Small size Rs. 2360.00 (A)
- HA103 **HUMAN SKELETON** - Life size made of fibre glass. All the bones shoulder & hip joints clearly depictable Rs. 2950.00 (A)
- HA103S **Stand for above** Each Rs. 1947.00 (A)
- HA104 **HUMAN SKELETON** - Plastic size 70 cm with stand. Rs. 1062.00 (A)
- HA105 **HUMAN SKELETON** - Plastic size 40 cm with stand. Each Rs. 230.00 (A)
- HA106 **Dummy with Doll** made of Fibre Glass Each Rs. 4838.00 (A)
- HA106A **Dummy Baby for Dummy with Doll** Each Rs. 1416.00 (A)
- HA107 **Female Pelvis with child** Each Rs. 2301.00 (A)
- HA108 **Female Pelvis with reproductive organs** Each Rs. 2301.00 (A)



- HA109 **Delivery Process Models** set of 8 Set Rs. 9440.00 (A)
- HA110 **Development of Fetus/Embryo** set of 9 Set Rs. 4425.00 (A)










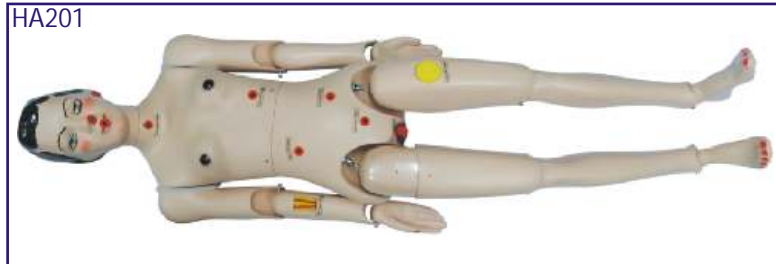
- HA110L **Development of Fetus/Embryo** set of 9 Large size set Rs. 10502.00 (A)
- HA111F **Full Size Human Female Body** Fibre Glass Showing organs & muscles Each Rs. 38940.00 (A)
- HA111M **Full Size Human Male Body** Fibre Glass Showing organs & muscles Each Rs. 38940.00 (A)
- HA112 **RNA** 60 x 45 cm Each Rs. 2242.00 (A)
- HA113 **DNA** 60 x 45 cm Each Rs. 2242.00 (A)
- HA116 **Human Placenta Model** made of Fiber Glass Each Rs. 1770.00 (A)



SPECIAL MODELS ON HUMAN ANATOMY

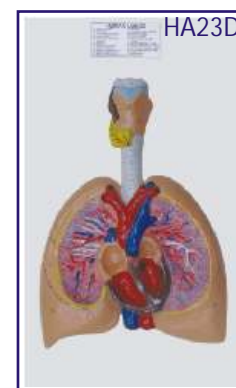
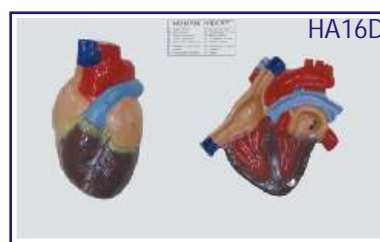
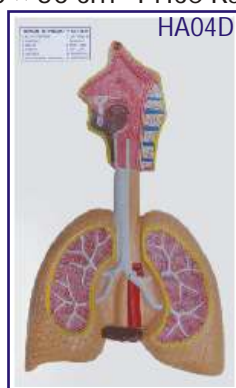
Dissectable Models (Fibre Glass)

HA126	Eye Ball	Each Rs. 472.00 (A)
HA127	Human Heart	Each Rs. 472.00 (A)
HA128	Human Ear	Each Rs. 472.00 (A)
HA129	Human Brain	Each Rs. 472.00 (A)
HA130	Human Kidney	Each Rs. 472.00 (A)
HA131	Human Lungs	Each Rs. 472.00 (A)
HA201	Nursing Manikin Female Made of Fibre Glass Life Size	Each Rs. 23010.00 (A)
HA202	Nursing Manikin Male Made of Fibre Glass Life Size	Each Rs. 23010.00 (A)
HA506	Structure of Tooth on Board 	Each Rs. 649.00 (A)
HA509	Shoulder Joint Model Made of Fibre Glass 	Each Rs. 435.00 (A)
HA510	Hip Joint Model Made of Fibre Glass 	Each Rs. 649.00 (A)
HA511	Knee Joint Model Made of Fibre Glass 	Each Rs. 435.00 (A)
HA512	Elbow Joint Model Made of Fibre Glass 	Each Rs. 435.00 (A)
HA513	Foot Joint Model Made of Fibre Glass 	Each Rs. 435.00 (A)
HA514	Hand Joint Model Made of Fibre Glass 	Each Rs. 435.00 (A)



HUMAN ANATOMY 3-D MODELS

Deluxe Quality, Made of Fiber Glass, Mounted on Wooden Board
Size 30 × 50 cm Price Rs. 1003.00 (A) each



HA01D Teeth	HA11D Spinal Cord	HA21D Reproductive Organs (Female)
HA02D Circulatory System	HA12D Stomach	HA22D Reproductive Organs (Male)
HA03D Digestive System	HA13D Liver	HA23D Lungs with Heart & Larynx
HA04D Respiratory System	HA14D Kidney	HA24D Skull
HA05D Nervous System	HA15D Brain	HA25D Excretory System
HA06D Skeleton	HA16D Heart	HA26D Endocrine System Male
HA07D Head & Neck	HA17D Eye	HA27D Endocrine System Female
HA08D Skin	HA18D Ear	HA28D Muscular System Front View
HA09D Mouth	HA19D Male Pelvis	HA29D Muscular System Back View
HA10D Tongue	HA20D Female Pelvis	HA30D Nose

The models are manufactured under expert supervision.

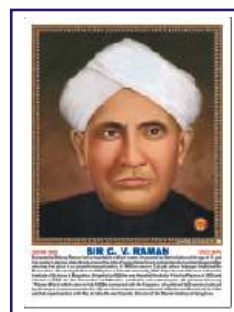
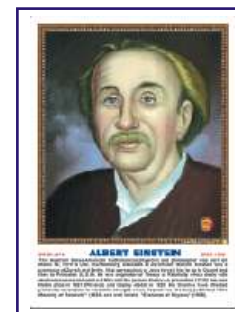
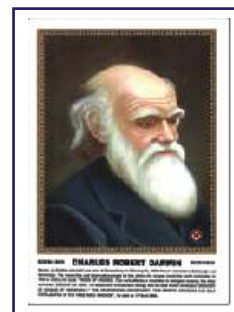
PHOTOS OF GREAT PERSONALITIES

MATT CANVAS LAMINATED ON NUWOOD BOARD

GREAT SCIENTISTS

Size 31 × 43 cm Approx (GS01P - GS140P) Each Rs. 413.00 (A)
 Size 45 × 60 cm Approx (GS01PS - GS140PS) Each Rs. 1250.00 (A)

- | | |
|------------------------------------|-------------------------------------|
| GS01 Charles Robert Darwin (B) | GS51 A. P. J. Abdul Kalam (P) |
| GS02 Gregor Mendel (B) | GS52 Dr. Vikram Sarabhai (P) |
| GS03 Lamarck (B) | GS53 Aryabhata (P, A & M) |
| GS04 Louis Pasteur (B) | GS54 Dr. S. S. Joshi (C) |
| GS05 Dr. William Harvey (B) | GS55 Sir Alexander Fleming (B) |
| GS06 Leonardo-da-Vinci (B) | GS56 D. Mata Parshad (C) |
| GS07 Sir Joseph Lister (B) | GS57 Benjamin Franklin (P) |
| GS08 Anton Van leeuwenhoek (B) | GS58 Ernest Rutherford (P & C) |
| GS09 Carl Von Linnaeus (B) | GS59 Dr. Raj Ramanna (P) |
| GS10 Edward Jenner (B) | GS60 Nicholas Copernicus (A & P) |
| GS11 Sir James Young Simpson (B) | GS61 Alessandro Volta (P) |
| GS12 Thomas Henry Huxley (B) | GS62 Alfred Nobel (C) |
| GS13 Sir Edwin Ray Lankester (B) | GS63 Anton Henry Bekuerel (P) |
| GS14 Sir Ronald Ross (B) | GS64 Atovan Gerok (P) |
| GS15 Hugo De-vries (B) | GS65 Benjemin Thomson (P) |
| GS16 Sir Charles Bell (B) | GS66 Crick (B) |
| GS17 Alfred Russel Wallace (B) | GS67 Watson (B) |
| GS18 Sir J. C. Bose (B) | GS68 Edward Victor Aplaton (P) |
| GS19 Dr. Birbal Sahni (B) | GS69 James Clark Maxwell (P) |
| GS20 Sunder Lal Hora (B) | GS70 Jessek Luious Gelusale (P & C) |
| GS21 Galileo Galilee (P) | GS71 Johns Kepeler (A & P) |
| GS22 Sir Isaac Newton (P) | GS72 Kalpana Chawla (A & P) |
| GS23 Sir C. V. Raman (P) | GS73 Max Planck (P) |
| GS24 Dr. H. J. Bhabha (P) | GS74 Panchanan Maheshwari (B) |
| GS25 Archimedes (P) | GS75 Varah Mihir (A, P & M) |
| GS26 Albert Einstein (P) | GS76 Sunita Williams (P) |
| GS27 Thomas Alva Edison (P) | GS77 James Watt (P) |
| GS28 Robert Boyle (P & C) | GS78 Andre Marie Ampere (P & M) |
| GS29 Marie Curie (P & C) | GS79 A. Graham Bell (P) |
| GS30 Michael Faraday (C) | GS80 Edwin Powell Hubble (A & P) |
| GS31 John Dalton (C) | GS81 Rakesh Sharma (A) |
| GS32 Dr. P. C. Ray (C) | GS82 M. S. Swaminathan (B) |
| GS33 Dr. H. G. Khorana (B & C) | GS83 Robert Hooke (P, B & A) |
| GS34 Dr. S. S. Bhatnagar (C) | GS84 S. R. Ranganathan (M & Lib.) |
| GS35 S. Ramanujan (P & M) | GS85 J. B. S. Haldane (B) |
| GS36 Antoine Laurent Lavoisier (C) | GS86 Guglielmo Marconi (P) |
| GS37 William Ramsay (C) | GS87 Wilbur Wright (P) |
| GS38 Humphry Davy (C) | GS88 Orville Wright (P) |
| GS39 August Weismann (B) | GS89 Neil Armstrong (P & A) |
| GS40 Joseph Priestley (C) | GS90 Wihelm Roentgen (P) |
| GS41 Aristotle (B) | GS91 S. Chandrasekhar (P & A) |
| GS42 Dmitri I. Mendeleef (C) | GS92 Lord Kelvin (P & M) |
| GS43 Burbank Luther (B) | GS93 Charles Babbage (P & M) |
| GS44 S. N. Bose (P) | GS94 Friedrich Wohler (C) |
| GS45 M. N. Saha (P) | GS95 Frederick William Herschel (A) |
| GS46 K. S. Krishnan (P) | GS96 J. J. Berzelius (C) |
| GS47 K. N. Bahl (B) | GS97 James Chadwich (P) |
| GS48 J. J. Thomson (P) | GS98 Dr. Vijay P. Bhatkar (P) |
| GS49 Neils Bohr (P) | GS99 C. N. R. Rao (C) |
| GS50 Gilbert Newton Lewis (C) | GS100 George Boole (M) |



Photos size 31 × 43 cm

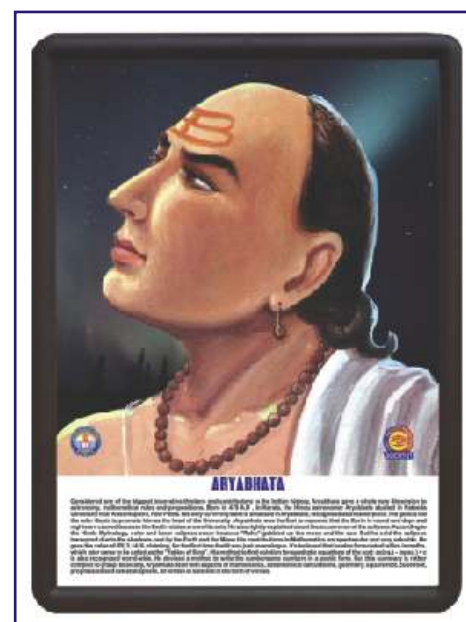


Photo size 45 × 60 cm

(A) Astronomer, (B) Biologist, (C) Chemist, (M) Mathematician, (P) Physicist

GREAT SCIENTISTS

Size 31 × 43 cm Approx (GS01P - GS140P) Each Rs. 413.00 (A)
 Size 45 × 60 cm Approx (GS01PS - GS140PS) Each Rs. 1250.00 (A)

- | | |
|---|--|
| GS101 Albert Abraham Michelson (P) | GS121 Venkatraman Ramakrishnan (C) |
| GS102 Stephen Hawking (P & A) | GS122 William Roxburgh (B) |
| GS103 Amedeo Avogadro (P) | GS123 Erwin Schrodinger (P) |
| GS104 Johannes Gutenberg (P) | GS124 Nikola Tesla (P) |
| GS105 Pierre Curie (P,C) | GS125 John Vincent Atanasoff (P) |
| GS106 Hans Christian Oersted (P & C) | GS126 Heinrich Hertz (P) |
| GS107 Henry Moseley (P) | GS127 Charles Francis Jenkins (P) |
| GS108 John Alexander Reina Newlands (C) | GS128 Jacobus Henricus Van'thoff (P & C) |
| GS109 Camillo Golgi (B) | GS129 Linus Carl Pauling (B & C) |
| GS110 Zacharias Janssen (P) | GS130 Friedrich Wilhelm Ostwald (C) |
| GS111 Georg Simon Ohm (P) | GS131 Svante August Arrhenius (C) |
| GS112 Johann Wolfgang Dobereiner (C) | GS132 Prof. S. R. Kashyap (B) |
| GS113 Thomas Hunt Morgan (B) | GS133 Frederick Sanger (C) |
| GS114 Christian Doppler (P & M) | GS134 Kary Banks Mullis (C) |
| GS115 Girolamo Cardano (P & M) | GS135 Michael Smith (C) |
| GS116 Robert Hanbury Brown (P) | GS136 G. N. Ramachandran (P) |
| GS117 Yellapragada Subbarow (B & C) | GS137 Alfonso Corti (B) |
| GS118 Prof. Yash Pal (P) | GS138 Ernst Mayr (B) |
| GS119 Josef Stefan (P & M) | GS139 Paul Ethralich (B) |
| GS120 Melvin Calvin (C) | GS140 Thomas Young (P) |

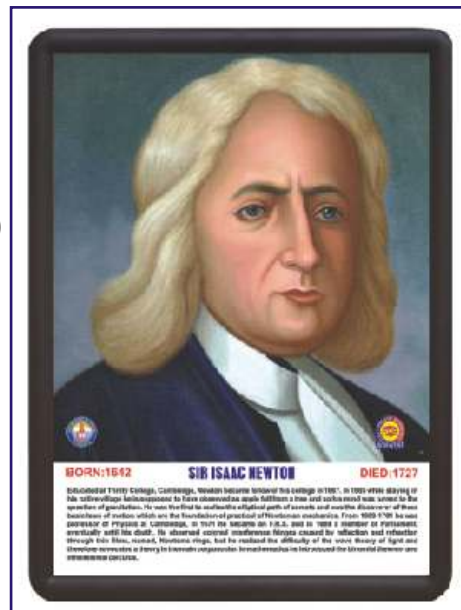


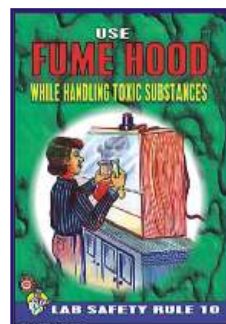
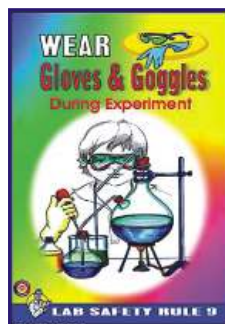
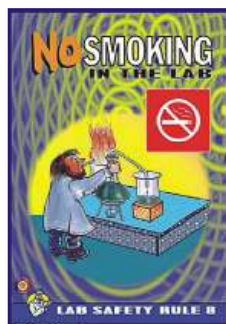
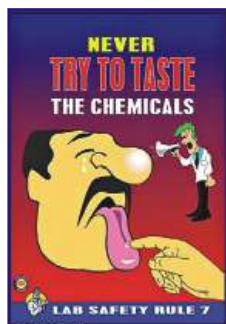
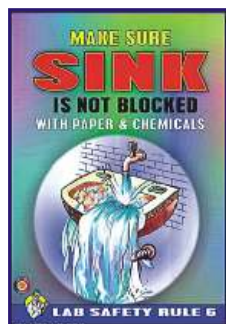
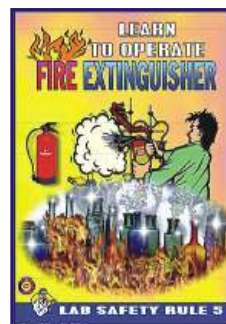
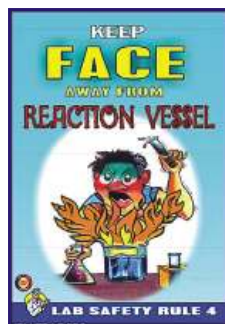
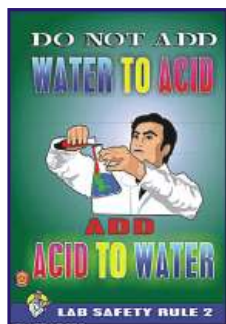
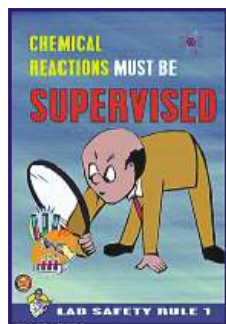
Photo size 45 × 60 cm

(A) Astronomer, (B) Biologist, (C) Chemist, (M) Mathematician, (P) Physicist

LAB SAFETY PHOTOS

Size 31 × 43 cm Approx (LSP01P - LSP10P) Each Rs. 413.00 (A)

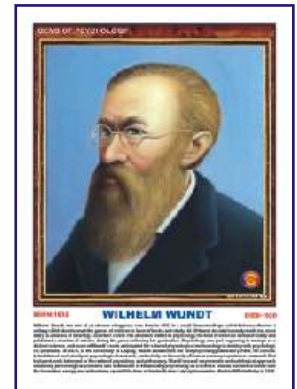
- | | |
|--|---|
| LSP01P Chemical reactions must be supervised | LSP06P Make sure sink is not blocked with paper & chemicals |
| LSP02P Do not add water to acid | LSP07P Never try to taste the chemicals |
| LSP03P Keep first aid box handy | LSP08P No smoking in the lab |
| LSP04P Keep face away from reaction vessel | LSP09P Wear gloves & goggles during experiment |
| LSP05P Learn to operate fire extinguisher | LSP10P Use fume hood while handling toxic substances |



(A) - GST@18% is included in the price.

GEMS OF PSYCHOLOGY

Size 31 × 43 cm Approx (GP01P - GP75P) Each Rs. 413.00 (A)
 Size 45 × 60 cm Approx (GP01PS - GP75PS) Each Rs. 1250.00 (A)



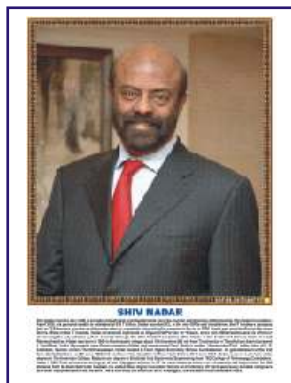
- GP01 Abraham H. Maslow
- GP02 Albert Bandura
- GP03 Alfred Adler
- GP04 Alfred Binet
- GP05 Aristotle
- GP06 B. F. Skinner
- GP07 C. L. Hull
- GP08 Carl G. Jung
- GP09 Carl R. Rogers
- GP10 Charles Bell
- GP11 Charles Darwin
- GP12 Charles Sherrington
- GP13 D.O. Hebb
- GP14 David Hume
- GP15 David Wechsler
- GP16 Dr. Cyril Burt
- GP17 E. B. Titchner
- GP18 E. C. Toleman
- GP19 E. H. Weber
- GP20 Edward L. Thorndike
- GP21 Edwin Guthrie
- GP22 Emil Kraepelin
- GP23 Erich Fromm
- GP24 Erik Erikson
- GP25 Ernest Jones

- GP26 F. A. P. Aveling
- GP27 F. J. Gall
- GP28 Francis Galton
- GP29 Frederick Perls
- GP30 G. S. Hall
- GP31 George Kelly
- GP32 Gordon Allport
- GP33 Gottfried W. Leibnitz
- GP34 Gustav T. Fechner
- GP35 Hans J. Eysenck
- GP36 Harlow
- GP37 Heinz Kohut
- GP38 Henry Murray
- GP39 Herbert Spencer
- GP40 Herman Rorschach
- GP41 Herman V Helmholtz
- GP42 Hermann Ebbinghaus
- GP43 Herry S. Sullivan
- GP44 Immanuel Kant
- GP45 Ivan P. Pavlov
- GP46 J. M. Baldwin
- GP47 J. M. Cattell
- GP48 J. W. Cannon
- GP49 Jean Piaget
- GP50 Johann F. Herbart

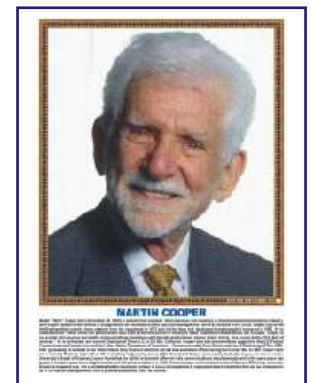
- GP51 Johannes P. Muller
- GP52 John B. Watson
- GP53 John Dewey
- GP54 John Locke
- GP55 Joseph Wolpe
- GP56 Julian Rotter
- GP57 K. S. Lashley
- GP58 Karen Horney
- GP59 Kurt Goldstein
- GP60 Kurt Koffka
- GP61 Kurt Lewin
- GP62 Max Wertheimer
- GP63 Melanie Klein
- GP64 Neil E. Miller
- GP65 Raymond B. Cattell
- GP66 Rene Descartes
- GP67 Rollo Reese May
- GP68 Sigmund Freud
- GP69 Thomas Hobbes
- GP70 Walter Mischel
- GP71 Wilhelm Wundt
- GP72 William James
- GP73 William Mc-Dougall
- GP74 William Sheldon
- GP75 Wolfgang Kohler

FAMOUS PERSONALITIES IN COMPUTER SCIENCE

Size 31 × 43 cm Approx (FCS01P - FCS12P) Each Rs. 413.00 (A)
 Size 45 × 60 cm Approx (FCS01PS - FCS12PS) Each Rs. 1250.00 (A)



- | | |
|---------------------------|-----------------------|
| FCS01 Alan Turing | FCS07 Martin Cooper |
| FCS02 Charles Babbage | FCS08 Satya N Nadella |
| FCS03 Dr. Vijay P Bhatkar | FCS09 Shiv Nadar |
| FCS04 George Boole | FCS10 Steve Jobs |
| FCS05 Lady Lovelace | FCS11 Sundar Pichai |
| FCS06 Mark Zuckerberg | FCS12 Tim Berners Lee |



HEALTH, HYGIENE & SANITATION

On a persistent demand from various Educational Institutions, NGO's, Rural Development Offices, Nursing Institutions we have recently published naturally coloured, useful and authentic charts incorporating all the modern researches and innovations on the subject. The charts are divided into two main topics as below :

HEALTH CARE SERIES

containing 10 Charts English & Hindi combined
Size 50x70 cm.

- HC01 * Health Rules
- HC02 * Causes of Diseases
- HC03 * Prevention of Diseases
- HC04 * Effects of Alcohol
- HC05 * Tobacco & Habit Forming Drugs
- HC06 * Clean Body
- HC07 * Clean Water
- HC08 * Constituents of Food
- HC09 * Malnutrition
- HC10 Immunization

Laminated Each Rs. 100.00 (B)

* Also Available In

English - Kannada

English - Tamil

English - Malayalam

English - Telugu

Each Rs. 112.00 (B)



PREVENT THE DISEASES

containing 24 Charts English & Hindi combined

Each chart depicts the Causes, Symptoms, Treatments, care to be taken.
Size 50x70 cm.

- | | |
|---------------------|----------------------------|
| PD01 * Cholera | PD13 * Dysentery |
| PD02 * Malaria | PD14 Hepatitis |
| PD03 * AIDS | PD15 Heart Attack |
| PD04 Plague | PD16 Diabetes |
| PD05 Tuberculosis | PD17 Asthma |
| PD06 Leprosy | PD18 Arthritis |
| PD07 Influenza | PD19 Thyroid |
| PD08 Jaundice | PD20 Blood Pressure |
| PD09 Cancer | PD21 Dengue |
| PD10 * Typhoid | PD22 Measles |
| PD11 Viral Diseases | PD23 Food Poisoning |
| PD12 Chicken Pox | PD24 Poliomyelitis (Polio) |

Laminated Each Rs. 100.00 (B)

* Also Available In

English - Kannada

English - Malayalam

English - Tamil

English - Telugu

Each Rs. 112.00 (B)



DETAILED HUMAN PHYSIOLOGY CHARTS

Printed in original colours. Everything requisite for thorough understanding of Human Physiology in its broad out line included. Each size 70 × 100 cm.

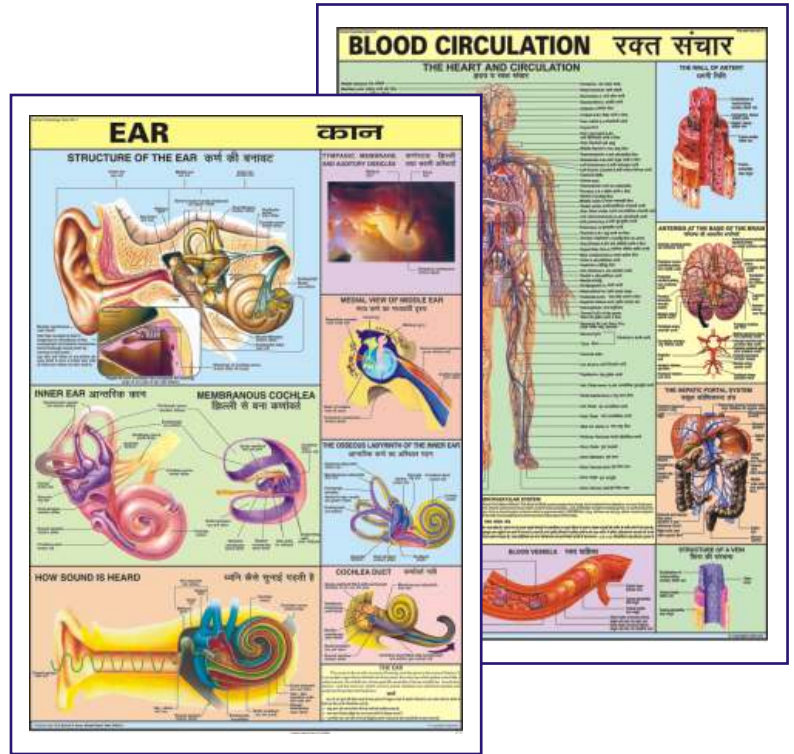
	Laminated	
The Skeleton*#	HPM01
Human Muscles*#	HPM02
Blood Circulation*#	HPM03
Nervous System*#	HPM04
Digestive System*#	HPM05
Eye*#	HPM06
Ear*#	HPM07
Kidney, Skin & Excretory Organs*#	HPM08
The Respiratory System*#	HPM09
Human Heart*#	HPM10
All above price Rs. 155.00 (B) each		
Endocrine System	HPM11
Reproductive (Male)#	HPM12
Reproductive (Female)#	HPM13
Human Embryology	HPM14
Lymphatic System	HPM15
English-Hindi combined	Each Rs. 164.00 (B)	
English Only (Add E to the code)	Each Rs. 164.00 (B)	
HPM16E Human Brain Eng Only	Rs. 172.00 (B)	
HPM17E Human Teeth Eng Only	Rs. 172.00 (B)	

Available in following languages also

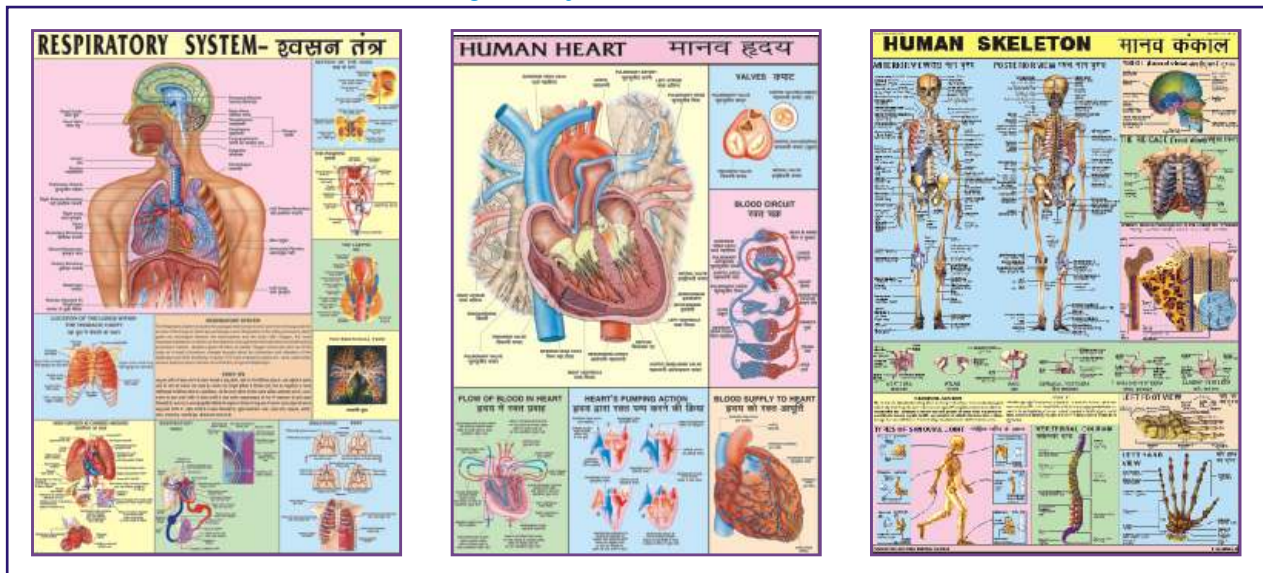
*English-Kannada(KN) *English-Malayalam(ML)

English-Tamil(TM) #English-Telugu(TG)

Price Rs. 172.00 (B) each



For English only. Add E to the above code



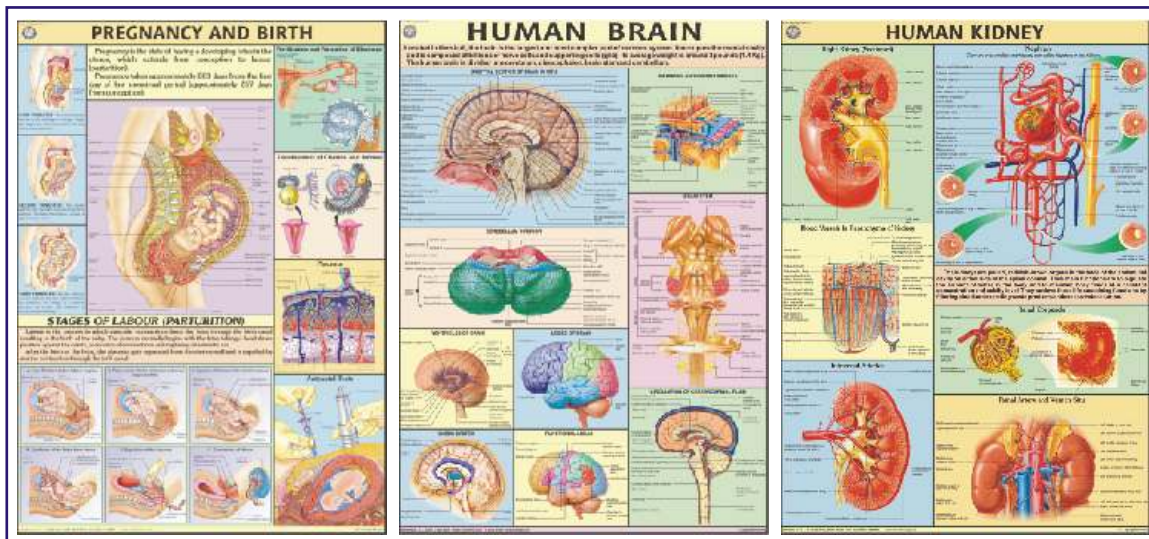
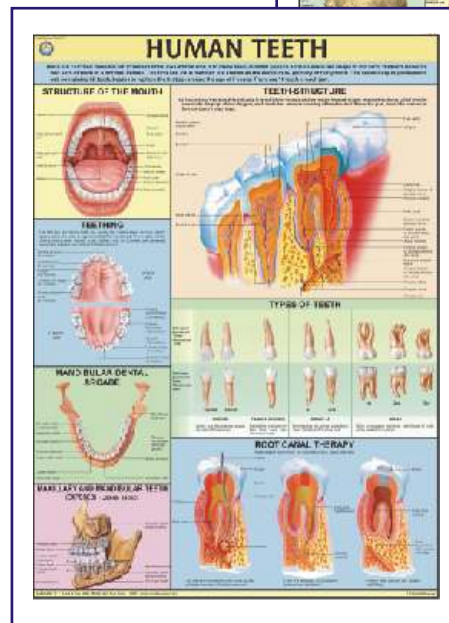
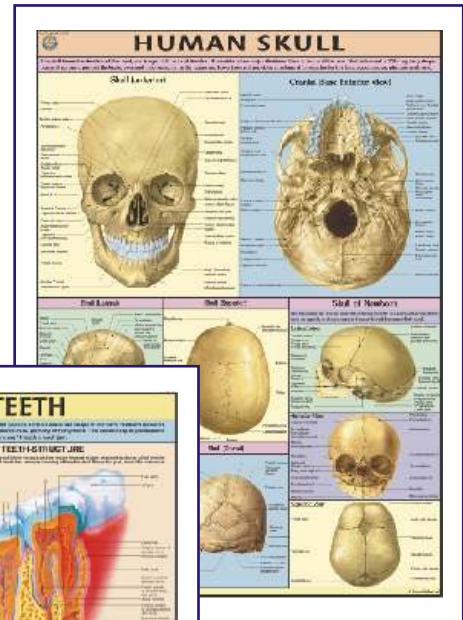
ELEMENTARY HUMAN PHYSIOLOGY

HPS01 to HPS11 Elementary Human Physiology Size 50 × 70 cms Laminated Each chart Rs. 100.00 (B)
 Available in English-Hindi only
 For details please see the first 11 charts given above.

DETAILED HUMAN PHYSIOLOGY CHARTS

Printed on Synthetic in original colours . Everything requisite for thorough understanding of Human Physiology in its broad out line included. Each size 70 × 100 cms. Available in English only. Price Each chart Rs. 224.00 (B)

- The SkeletonHP01S
- Muscles.....HP02S
- Blood CirculationHP03S
- Nervous SystemHP04S
- Digestive System.....HP05S
- EyeHP06S
- EarHP07S
- Kidney, Skin & Excretory OrgansHP08S
- The Respiratory SystemHP09S
- Human HeartHP10S
- Endocrine SystemHP11S
- Reproductive (Male).....HP12S
- Reproductive (Female)HP13S
- Human EmbryologyHP14S
- Lymphatic SystemHP15S
- Human Brain.....HP16S
- Human TeethHP17S
- Pregnancy & Birth.....HP18S
- Human KidneyHP19S
- Urinary TractHP20S
- Human Skull.....HP21S
- Ear, Nose, ThroatHP22S
- Liver, Gall bladder & PancreasHP23S
- Human LungsHP24S
- Joints of the BodyHP25S
- Immune SystemHP26S
- Human SkinHP27S
- Movable Joints (Synovial)HP28S
- Human Spinal CordHP29S
- Menstrual CycleHP30S
- Contraception (Birth Control).....HP31S
- Vertebral ColumnHP32S



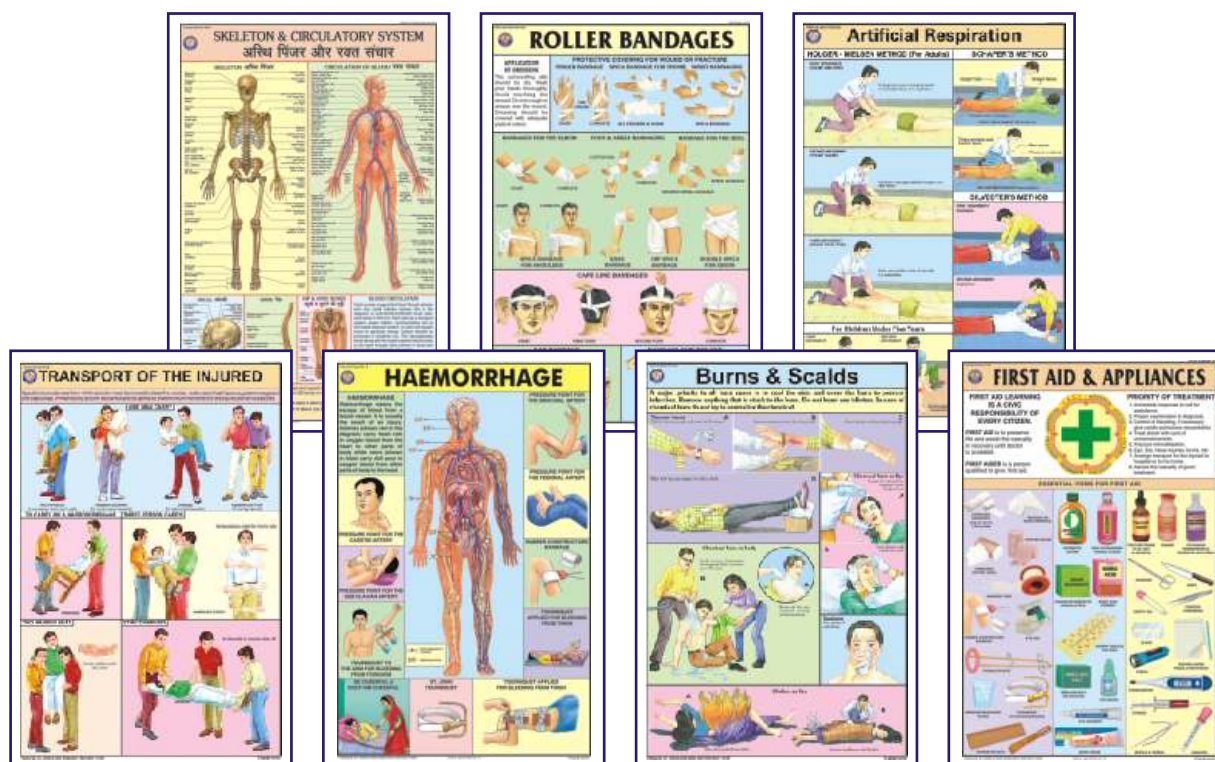
FIRST AID CHARTS

Each Chart size 50 × 70 cm - English and Hindi combined, Laminated

- FA01 **Skeleton & Circulatory System** : Gives the basic knowledge of human body.
 FA02 **Triangular Bandages** : Slings, knots and bandages for various parts of body.
 FA03 **Roller Bandages** : A protective covering for wound or fracture, methods of bandaging.
 FA04 **Fractures** : Simple & compound fractures, treatment of fracture in parts of body.
 FA05 **Artificial Respiration** : Showing Schafer's method, Silvestor's method & Holger Nielsen's method of artificial respiration. Outline of Respiratory system and what is suffocation.
 FA06 **Transport of the injured** : How to carry an injured person so that minimum movement of the injured portion is assured.
 FA07 **Unconsciousness** : Sun Stroke, fainting, epileptic fit, Infantile convulsions, drowning.
 FA08 **Haemorrhage** : Location of main arteries in the body and pressure points where when pressed, bleeding can be controlled.
 FA09 **Electric Shock Treatment** : How to remove live wires, treatment & whom to contact.
 FA10 **Emergency Resuscitation** : Mouth to mouth and Mouth to nose method. How to give external cardiac chest compression.
 FA11 **Removal of foreign bodies from eye, ear, nose** : Various precautionary methods to remove the foreign bodies and to ensure safety of organs.
 FA12 **Burns & Scalds** : Type of burns, treatment of chemical burns, clothing on fire.
 FA13 **Snakes & Their Bites** : Type of snakes, Identification of snakes on the basis of appearance, treatment of snake bite.
 FA14 **Poisons and their Antidotes** : Types of poisons, their symptoms & their treatment.
 FA15 **First Aid & Appliances** : What is First Aid, Qualities of a First Aider and essential appliances to give first aid.

Each Rs. 100.00 (B)

All the above Charts are available in English only also. Add E to the above code



Some Special Charts

- CD05 Life saving first aid instruction size 70x100 cm, Eng & Hindi Combined, Lam.
 STG21 Fire & Fire Extinguishers size 58 x 90 cm, Eng Only, Lam.

Rs. 172.00 (B)

Rs. 170.00 (B)

COLOURED CHARTS ON YOGA

Each Chart size 50 x 70 cms - Hindi & English combined, Laminated
Price Each chart Rs. 100.00 (B)

A faithful study and following the instructions as laid down in these charts, a vast treasure of super powers can be explored and developed within ourselves. For all round Physical, Mental, Emotional, Intellectual & Spiritual development of mind and body.

- YO01 **1. Shuddhi Kriyas-Shat Karmas** : Kunjal-Vaman Dhauti, Kapal Bhati, Ghrit Neti, Sutra Neti, Jal Neti, Vastra Neti, Dand Dhauti, Nauli Karma, Tratak, Basti etc.
- YO02 **2. Shankh Prakshalan** : Kagasan, Tadasan, Triyak Tadasan, Triyak Bhujangasan, Kati Chakrasan, Udarakarashanasan, Shavasan.
- YO03 **3. Surya Namaskar** : A series of twelve steps, a complete exercise of all the parts of body. It makes the body strong, beautiful & active.
- YO04 **4. Yog Mudras, Padmasan & Matsyasan** : These remove Spinal & Cervical pain, Asthma, Diabetes, Mental weakness, Gastric troubles, Knee pain, Eye Defects.
- YO05 **5. Paschimottanasan & Ardh Matsyendrasan** : Spine becomes flexible and Elastic, the Abdominal organs- Digestive system, Nervous system are toned up.
- YO06 **6. Vajrasan, Ustrasan & Supt Vajrasan** : These remove cervical and slipdisc defects diseases of chest, lungs, heart, abdomen, kidney etc. , excess fatness of Abdomen and back
- YO07 **7. Bhujangasan, Shalabhasan, Dhanurasan & Mayurasan** : Abdominal Organs are toned up. Spine is strengthened. Remove Gastic Intestinal disorders etc. Mental Powers are developed.
- YO08 **8. Pawan Muktasan & Chakrasan** : Keep Spine Young & Flexible. Improve Eye sight, Hearing, Smell Taste & Circulation of Blood to the brain.
- YO09 **9. Sarvangasan & Halasan** : Reduce fat, make arms, legs, Blood circulation, Digestive system, Liver strong and maintains youthful look etc.
- YO10 **10. Bandhas & Pranayams** : Mool Bandh, Jalandhar Bandh, Uddiyan Bandh, Mahabandh. Pranayam Mudra, Lom-vilom Pranayam, Nadishodan Pranayam, Agnisar Kriya.
- YO11 **11. Spine & Related Organs** : Composition of spine, Positions of Psychic centres and Endocrine Glands are shown.
- YO12 **12. Healthy Eye** : Eye washing, tratak on rising sun, Eye exercises, Palming.



Map Storage Stand

MAP STANDS

MAP STORAGE STAND

DS101 As illustrated for keeping 24 maps made of iron painted.

• Price Rs. 2773.00 (A)

DS102 For keeping 36 maps made of Iron painted.

• Price Rs. 3304.00 (A)

MAP DISPLAY STAND

DS103 The map hangs on the stand nearest to the students; it is easy for the teacher also to emphasise on a point. All folding sturdily built of iron pipes. Height Adjustable. Very convenient to carry from one class to another. Painted.

• Price Rs. 2065.00 (A)



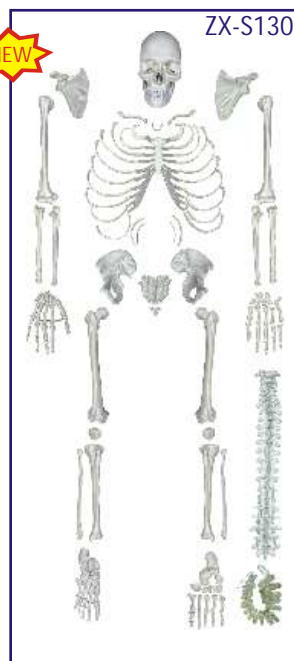
Map Display Stand

Charts are laminated and fitted with plastic rollers.

BONES & SKELETON MODELS



ZX-S101
Human Skeleton Male Life Size Articulated
 • Price Rs. 26314.00 (A)
 • Life size • Made of PVC
 • Bonnet can be removed, Mandible is movable, Teeth are separately installed & all skull foramina, fissures, processes are well depicted.
 • Cervical artery, nerves, prolapsed (herniated) disk & hyoid bone shown.
 • Coccyx separately mounted.
 • Sacral canal clearly depicted.
 • Upper limbs & lower limbs can be removed easily.
 • Washable & Unbreakable.
 • Mounted on stand with rollers.
 • Key card / Manual provided.



ZX-S130
Human Skeleton Disarticulated with Intervertebral Discs
 • Price Rs. 13570.00 (A)
 • Life size • Made of PVC
 • Complete set of 201 pcs.
 • Ideal for study of individual bones.
 • Skull bonnet can be removed, Mandible is movable & all skull foramina, fissures, processes are well depicted.
 • Teeth are separately installed, same as real one, in ceramic white color.
 • Right hand and foot are articulated.
 • Left hand and foot are disarticulated.
 • All intervertebral discs provided.
 • Hyoid bone, separate coccyx provided.
 • Sacral canal clearly depicted.
 • Instructional chart included.
 • Key card / Manual provided.



ZX-S102PN
Human Skeleton Model 85 cm Numbered
 • Price Rs. 6136.00 (A)
 • Made of PVC
 • Demonstration of anatomically accurate natural movements.
 • The points of origin (Red) and attachment (Blue) of the most important muscles from head to foot are marked in colour on the right side.
 • Mounted on stand.
 • 49 features marked.
 • Key card / Manual provided.



ZX-S130WC
Human Skeleton Disarticulated with Intervertebral Discs
 • Price Rs. 14750.00 (A)
 • "Same as ZX-S130"
 • Same as above but with a durable plastic container so that the loose bones are kept safe & clean.



ZX-S103
Desktop Skeleton 45 cm
 • Price Rs. 1593.00 (A)
 • 45 cm • Made of PVC
 • Features three part skull, bonnet can be removed, Mandible is movable & skull foramina, fissures, processes are well depicted. Vertebral column is fixed.
 • Flexible arms and legs allow for realistic movement.
 • Mounted on stand
 • Key card / Manual provided.



XC-102B
Human Skeleton
 • Price Rs. 9086.00 (A)
 • Size 85cm Medium.
 • Made of PVC plastic.
 • Shows nerves and blood vessels.
 • Depicts the position, course & distribution of main arteries & peripheral nerves
 • Can be employed as a visual aid in the instruction of anatomy to students of medicine.



ZX-1227 Tiny Skeleton, 21cm

• Price Rs. 590.00 (A)

- Size : 21 cm height
- Made of PVC
- Well built and informative.
- Features three part skull, bonnet can be removed & all skull foramens, fissures, processes are well depicted. Vertebral column is fixed.
- Flexible arms and legs allow for realistic movement.
- Tiny version of human skeleton model.
- Erect on stand
- Model is accurately made from actual specimen references, photographs and encyclopedia reference under expert guidance.
- Model is great teaching tool for anatomy lessons.
- Key card / Manual provided.



ZX-1224P

Fetus Skeleton

- Price Rs. 6490.00 (A)
- Life size
- Made of PVC
- Human articulated fetal skeleton model.
- 32 weeks fetal skeleton structure shown.
- Skull & legs are detachable.
- Lower jaw is spring loaded enabling it to open and close.
- Model is rigid with stand & base.
- Key card / Manual provided.



ZX-S109

Shoulder Joint Model Flexible

• Price Rs. 2124.00 (A)

- Life size
- Made of PVC
- Show shoulder joint abduction, adduction, forward tilt, backward tilt and inward/outward rotation.
- It is constructed with flexible plastic ligaments.
- Mounted on a plastic base.
- Key card / Manual provided.



ZX-S110

Hip Joint Model Flexible

Hip Joint Model Flexible

• Price Rs. 2242.00 (A)

- Life size
- Made of PVC
- Accurate representation of the hip joint and its ligaments.
- It is constructed with flexible plastic ligaments.
- Mounted on a plastic base.
- Key card / Manual provided.



ZX-S112

ZX-S112

Elbow Joint Model Flexible

• Price Rs. 2006.00 (A)

- Life size
- Made of PVC
- It consists of lower part of humerus bone and upper part of radius and ulna bones.
- It is constructed with flexible plastic ligaments.
- Mounted on a plastic base.
- Key card / Manual provided.



ZX-S111

ZX-S111

Knee Joint Model Flexible

• Price Rs. 2301.00 (A)

- Life size
- Made of PVC
- Model represents a functional model of knee joint with lateral ligaments, meniscus and patellar ligament.
- It is constructed with flexible plastic ligaments.
- Mounted on a plastic base.
- Key card / Manual provided.



ZX-S113A

ZX-S113A

Foot Joint Model Flexible

• Price Rs. 2478.00 (A)

- Life size
- Made of PVC
- Accurate representation of the foot joint and its ligaments
- It is constructed with flexible plastic ligaments
- Mounted on a plastic base.
- Key card / Manual provided.



ZX-S114A

ZX-S114A

Hand Joint Model Flexible

• Price Rs. 2301.00 (A)

- Life size
- Made of PVC
- All joints are movable according to real human flexibility, with radius and ulna.
- It is constructed with flexible plastic ligaments
- Mounted on a plastic base.
- Key card / Manual provided.



ZX-1212P

ZX-1212P Muscular Shoulder Joint Model

• Price Rs. 4366.00 (A)

- Life size • Made of PVC • Mounted on a plastic base
- Model is a realistic replica of a right shoulder joint muscles and ligaments.
- Model Features a semi-articulating right rotator cuff with an encapsulated humerus that can be removed from the capsular ligament. This allows demonstration of the rotator cuff's role in both fixing the humerus in the glenoid cavity and depressing it during elevation.
- Model includes eight ligaments and tendons, four bones (acromion, clavicle, humerus and scapula), and five muscles (infraspinatus, teres minor, teres major, subscapularis and supraspinatus) of the shoulder.
- Key card / Manual provided.



ZX-1226A Knee Joint Model Deluxe with Muscles & Ligaments



ZX-1226A

• Price Rs. 4720.00 (A)

- Life size (29 x 10 x 7.5 cm) • Made of PVC
- Model represents a slightly flexible right knee joint with associated muscles, ligaments and meniscus.
- It shows fibular collateral, tibial collateral, anterior and posterior cruciate, and patellar ligament with patella.
- The extended femur and patellar ligament are connected to top section of the quadriceps on this anatomical model.
- The model is constructed with somewhat rigid plastic ligaments.
- Mounted on display stand.
- Model is of superior quality with realistic texture and features and is very informative.
- Key card / Manual provided.



ZX-1225

ZX-1225 Muscular Hip Joint Model

• Price Rs. 4720.00 (A)

- Life size • Made of PVC
- It is a realistic replica of hip joint muscles and ligaments.
- Mounted on a plastic base.
- Key card / Manual provided.



ZX-1510P

ZX-1510P Knee Arthritis Model

• Price Rs. 5015.00 (A)

- Size reduced to 3/4 • Made of PVC
- Set of 4 knee models includes a normal knee joint and 3 models illustrating progressive degenerative knee joint disease from early to moderate and finally to advanced stage.
- Models shows osteoarthritic erosion to joint articular cartilage and formed osteophytes (bone spurs) at the articular surfaces.
- Mounted on display stand.
- Key card / Manual provided.



ZX-1203E

ZX-1203E Foot Model

• Price Rs. 3068.00 (A)

- Life size • Made of HSP resin
- Model shows significant structures of the foot such as muscles, bones and ligaments
- 31 features marked.
- Key card / Manual provided.



ZX-1203S

ZX-1203S Foot Anatomy Model

• Price Rs. 3363.00 (A)

- Life size • Made of HSP resin
- Human foot model showing muscles, ligaments, tendons and bones of the foot.
- 30 features marked.
- Key card / Manual provided.



ZX-1601

ZX-1601 Bone Microstructure

• Price Rs. 5310.00 (A)

- 30x20x16 cm • Made of HSP resin
- 3-D section of a lamellar bone.
- It helps to understand the typical elements of a lamellar bone along with the Volkmann & Haversian system, spongy & compact parts, endosteum, cortical substance & osteocytes.
- Model shown various planes in cross and longitudinal section.
- 19 features marked.
- Key card / Manual provided.



NEW

ZX-S126
Vertebral Column Flexible Model Life Size

- Price Rs. 6490.00 (A)
- Life size • Made of PVC
- Fully flexible
- It consists of the occipital plate, cervical, thoracic and lumbar vertebrae, sacrum, coccyx and complete pelvis
- Features include representations of the vertebral arteries, spinal nerve branches and a prolapsed L3-L4 intervertebral disc.
- Mounted on stand.
- Key card / Manual provided.



NEW

ZX-1505 Lumbar Vertebrae Degeneration Model

- Price Rs. 5192.00 (A)
- 35x23x19 cm • Made of PVC
- Lumbar spine lesion demonstration model showing one pair of normal lumbar vertebrae, one vertebrae set with bulging herniated disc, one vertebrae set with bone/disc degeneration and one vertebrae set showing advanced osteoporosis with bone compression and bone spurs.
- Key card / Manual provided.



NEW

ZX-1223P
Didactic Vertebral Column, Half Size

- Price Rs. 3186.00 (A)
- Half size
- Made of PVC
- Fully flexible
- It is differentiated by colours to show 7 cervical vertebrae, 12 thoracic vertebrae, 5 lumbar vertebrae, sacrum and coccyx.
- Model also shows full pelvis and movable mounted femur heads.
- Mounted on stand
- Key card / Manual provided.



NEW

ZX-1223 Spinal Column Model Half Size

- Price Rs. 2832.00 (A)
- Half size • Made of PVC
- Fully flexible
- Consists of the cervical, thoracic and lumbar vertebrae, sacrum, coccyx, complete pelvis and femur heads.
- Features include representations of the spinal nerve branches and a prolapsed L3-L4 intervertebral disc.
- Mounted on stand
- Key card / Manual provided.

ZX-S120 Thoracic Vertebrae model Life Size



NEW

- Price Rs. 4602.00 (A)
- Life size • Made of PVC
- This model consists of the 12 thoracic vertebrae with intervertebral discs, thoracic nerves and spinal cord.
- In this model, true thoracic skeletal shape is restored, the shape is vivid, and the texture is clear and delicate. Anatomical details such as various bulges, bone sutures, and sulcus vascular indentations are expressed.
- Mounted on stand.
- The model is flexible just like original vertebrae.
- Key card / Manual provided.



NEW

ZX-S119 Lumbar Vertebrae with Sacrum Bone

- Price Rs. 4602.00 (A)
- Life size • Made of PVC
- Mounted on a stand
- The shape is vivid, and the texture is clear and delicate. Anatomical details such as various bulges, bone sutures and sulcus vascular indentations are expressed.
- Key card / Manual provided.



ZX-S104 Skull Model 3 Part PVC

- Price Rs. 3068.00 (A)
- Life size • Made of PVC
- Dissectable in 3 parts
- Bonnet can be removed, Mandible is movable & all skull foramina, fissures, processes are well depicted
- Teeth are separately installed, same as real one, in ceramic white color.
- Key card / Manual provided.

NEW



XC-104 Life Size Skull

- Price Rs. 3422.00 (A)
- This economical life-size adult plastic skull features a moveable jaw, cut calvarium, suture lines and 3 removable lower teeth-incisor, cuspid and molar.
- Dissectible into 3 parts.

ZX-1200 Skull with Removable Lower teeth



- Price Rs. 5546.00 (A)
- Life size • Made of PVC • Dissectible into 4 parts.
- This high quality classic skull with 16 teeth for extraction is medically detailed in structure. The teeth of the lower jaw can be individually extracted and replaced, and have fully formed roots for detailed examination. The model has a bone flap on its right mandible for viewing the dental roots, spongiosa, nerve canal, and an impacted wisdom tooth. The calvaria is removable to show the internal structure of the skull. The mandible is articulated and removable. All of the joints, sutures, fissures, foramen, and styloid processes are highly accurate.
- It is a perfect tool for anatomical and dental study.
- Key card / Manual provided.

NEW



ZX-S135P Skull Model Painted with Cervical Vertebrae

- Price Rs. 6726.00 (A)
- Life size • Made of PVC
- Dissectible in 3 parts.
- All of the joints, sutures, fissures, foramina and processes are portrayed with utmost accuracy.
- Bonnet can be removed, Mandible is movable, Teeth are separately installed.
- Model also shows cervical vertebrae, cervical nerves, vertebral arteries, basilar artery, cerebral artery and cerebellar artery.
- Mounted on a stand with plastic base.
- All the bones are depicted in different colours, making this model a useful tool to study the correct position and the relationship of all the structures.
- Key card / Manual provided.

NEW



ZX-1202PN Skull Model Life size Painted-Numbered PVC

- Price Rs. 4720.00 (A)
- Life size • Made of PVC • Dissectible in 3 parts
- Muscle insertions and origins painted in blue and red respectively.
- Bonnet can be removed, Mandible is movable & all skull foramina, fissures, processes are well depicted.
- Teeth are separately installed, same as real one, in ceramic white color.
- 48 features marked. • Key card / Manual provided.

NEW

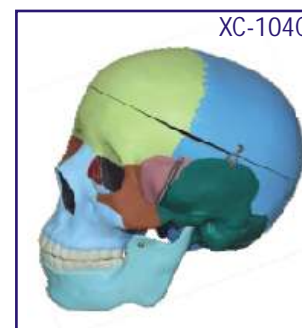
ZX-1208P Didactic Human Skull 22 Parts



- Price Rs. 14750.00 (A)
- Life size • Made of PVC
- Consists of 22 parts.
- Suture of each bone is equipped with magnets to assemble easily.
- The 22 bones are depicted in 10 different didactic colors to study the correct position and the relationship of all the structures. Each pair of bone plates has the same color.
- Key card / Manual provided.

NEW

XC-104C Life Size Coloured Skull



- Price Rs. 5074.00 (A)
- This is advanced model of XC-104 life-size skull, bones painted in different colors for precise study.
- Can be disassembled into 3 parts.

ZX-1232PN Skull with Well Marked Sutures



- Price Rs. 3481.00 (A)
- Life size • Made of PVC
- Dissectable in 3 parts
- This skull model comes with a removable calvarium (skull cap) to show internal details and removable & an articulating mandible (jaw).
- All suture lines are beautifully painted for easy identification.
- 55 features marked.
- Keycard / Manual provided.



XC-104E Skull Model with 8 Parts Brain

- Price Rs. 8024.00 (A)
- This Model is based on XC-104, includes 8 parts brain: frontal & parietal lobe, temporal & occipital lobe, encephalic trunk & cerebellum.

ZX-1209P Didactic Miniature Skull 15 Parts



- Price Rs. 3658.00 (A)
- 12.5x9x13 cm • Made of PVC
- Consists of 15 parts.
- Suture of each bone is equipped with magnets to assemble easily. All the bones are depicted in different colours, making this model a useful tool to study the correct position and the relationship of all the structures.
- Keycard / Manual provided.



ZX-1204 Miniature Skull Model PVC

- Price Rs. 767.00 (A)
- 9.75x7x11 cm • Made of PVC
- Dissectable in 3 parts
- Bonnet can be removed, Mandible is movable. The foramen & fossa are present.
- Keycard / Manual provided.



ZX-1201 Human Fetal Skull

- Price Rs. 2065.00 (A)
- Made of HSP resin having long durability.
- Natural size. Movable lower jaw.
- Total 41 parts labeled.
- Beautifully painted in colours.
- Showing incomplete ossification of skull bones, fontanelles, frontal and parietal eminences, various skull bones like occipital, temporal, sphenoid, frontal, mandible and maxilla.



ZX-S123 Male Pelvis Bone Model

- Price Rs. 2832.00 (A)
- Life size • Made of PVC
- Easy to study the structures and features of the hip, sacrum, coccyx & pubic symphysis.
- Separate coccyx.
- Sacral canal clearly depicted.
- Key card / Manual provided.



ZX-S124 Female Pelvis Bone Model

- Price Rs. 2832.00 (A)
- Life size • Made of PVC
- Easy to study the structures and features of the hip, sacrum, coccyx & pubic symphysis.
- Sacral canal clearly depicted.
- Keycard / Manual provided.



JOINT SECTION MODELS

- Life size
- Made of PVC
- Mounted on a plastic base.
- Keycard / Manual provided.
- Textures of the spongy and compact bone material, directional striations of the muscle, smooth ribbing of nerve bundles and the smooth lumpy fat areas can be felt over in great detail with this relief model.



ZX-1214P

NEW

ZX-1214P

Shoulder Joint Section Model

- Price Rs. 4425.00 (A)
- Cross section of a human right shoulder.
- This cross section clearly shows the scapula, clavical, humerus and 1st-5th ribs, lateral cord, axillary artery, articular cartilage, deltoid, bicep, ligaments, fat, arteries, veins and dermis presented in one convenient model.



ZX-1215P

NEW

ZX-1215P

Hip joint Section Model

- Price Rs. 4425.00 (A)
- Cross section of a human right hip.
- This cross section clearly shows the bones, cartilage, muscles, tendons and dermis presented in one convenient model.



ZX-1216P

NEW

ZX-1216P

Knee Joint Section Model

- Price Rs. 4425.00 (A)
- Cross section of sagittal section of human knee joint.
- This cross section clearly shows the muscles, bones (including Femur, Tibia, and Patella), vasculature, ligaments, tendons and dermis presented in one convenient model.



ZX-1217P

NEW

ZX-1217P

Elbow Joint Section Model

- Price Rs. 4425.00 (A)
- Cross section of a human elbow.
- This cross section clearly shows the humerus, radius, ulna, muscles and dermis presented in one convenient model.



ZX-1218P

NEW

ZX-1218P

Foot Joint Section Model

- Price Rs. 4425.00 (A)
- Cross section of a human right foot/ankle.
- This cross section clearly shows the bones, cartilage, muscles, ligaments, vasculature, nerves and dermis presented in one convenient model.



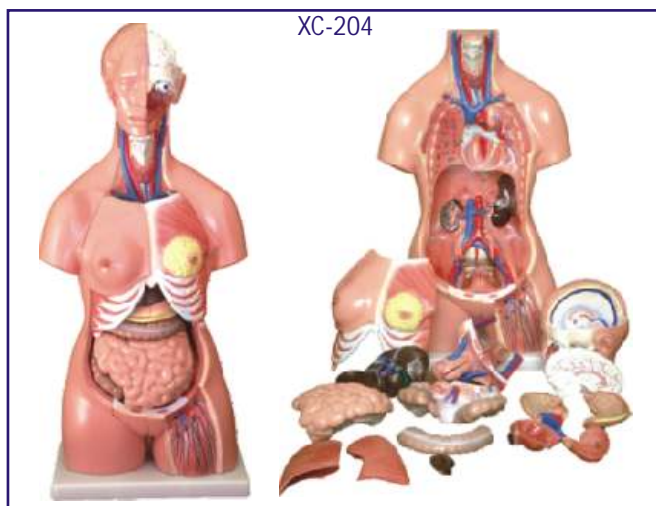
ZX-1219P

NEW

ZX-1219P Hand Joint Section Model

- Price Rs. 4425.00 (A)
- Cross section of a human right hand/wrist.
- This cross section clearly shows the bones, cartilage, muscles, tendons and dermis presented in one convenient model.

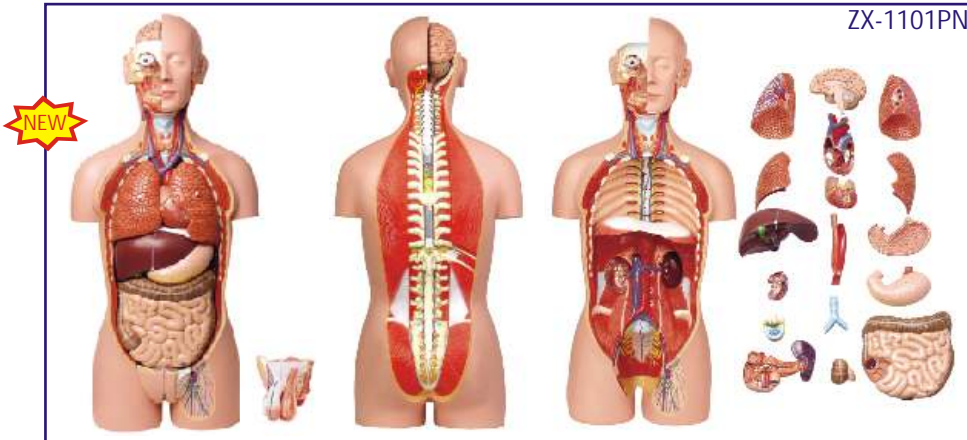
HUMAN TORSO MODELS



XC-204

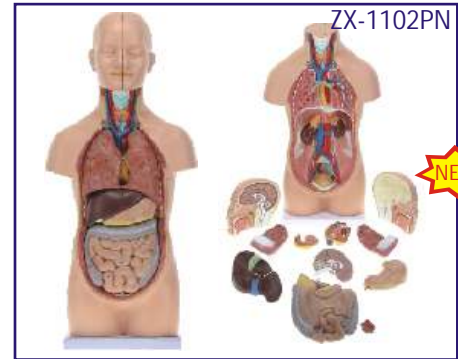
XC-204 Unisex Torso 23 parts 85CM

- Price Rs. 26786.00 (A)
- Size: 33.5" tall (85cm)
- Made of PVC plastic.
- Features an exposed spine with removable vertebra and spinal cord segments.
- Interchangeable male and female genitalia.
- The female organs include a fetus in the womb.
- Mounted on a plastic base.
- Dissectible into 23 parts: torso, female breast plate, head, eyeball, brain, vertebra spinal nerves, lung (2 parts), heart (2 parts), liver, kidney, stomach (2 parts), intestines (4 parts), male genitalia (2 parts), female genitalia with fetus (3 parts).



ZX-1101PN Human Torso Deluxe 85 cm. 27 Parts 2-in-1

- Price Rs. 58882.00 (A)
- 85 cm
- Made of PVC
- Dissectable in 27 parts.
- 2-in-1 with removable interchangeable male and female genitalia.
- The mouth cavity and nasal cavity is open.
- The head is open, the cerebrum with cerebellum can be taken out.
- Removable male & female reproductive organ and removable half kidney.
- Lung completely removable. Important structures of thoracic cavity like sympathetic column, azygos vein, hemiazygos vein, thoracic duct are well shown.
- Open neck & back providing full view of the nervous system, brain & whole spinal cord.
- The 12th thoracic vertebra can be taken out for close observation of vertebrae, spinal cord, spinal nerves and 3 layers of maters.
- Key card / Manual provided.



ZX-1102PN Human Mini Torso 50 cm (12 Parts)

- Price Rs. 12980.00 (A)
- 50cm tall
- Made of PVC
- Dissectable in 12 parts.
- The model includes removable lungs, heart, liver, stomach, intestines, and head. Cecum can be easily removed from the intestine for additional internal view.
- The head is bisectable. One half of the brain is also removable. The heart can be bisected as well.
- Hooks & hidden magnets are used to keep the torso together.
- Mounted on a base.
- 73 features marked.
- Key card / Manual provided.

ZX-1103P Human Torso Small



- Price Rs. 3481.00 (A)
- 28cm tall
- Sexless
- Made of PVC
- Dissectable in 15 parts- trunk, brain (2), heart, esophagus and aorta, lung (4), skull cover, stomach, diaphragm, liver, pancreas & spleen, and intestines.
- Details organs are depicted clearly.

- Mounted on a base.
- Key card / Manual provided.



ZX-1100E Human Torso Small (23 parts)

- Price Rs. 4425.00 (A)
- 46 x 24 x 12.5 cm.
- Interchangeable male & female genitalia.
- Mounted on a base.

- 74 features marked.
- Key card / Manual provided.



MK064 Visible Expectant Mother Anatomy Kit

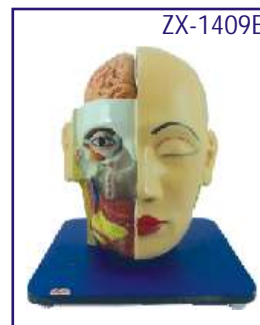
- Price Rs. 12390.00 (A)
- Size 55cm.
- Dissectable in 48 pieces.
- Detailed instruction manual included.
- This visible anatomy model realistically shows the important parts of human body.

ZX-1414P Human Head Model Sagittal Section



- Price Rs. 5841.00 (A)
- 33x23x5 cm
- Made of PVC
- This extremely elaborate model shows the structure of the brain, spinal cord, nasal cavity, oral cavity and larynx.
- Mounted on base.
- Key card / Manual provided.

ZX-1409E Head, Brain and Eye



- Price Rs. 4838.00 (A)
- Life size
- Made of HSP resin
- Model is in 4 parts with 2 parts brain and eye with optic nerve.
- Model shows natural position of nose, mouth cavity, pharynx, occiput & skull base.
- Mounted on board.
- 85 features marked.
- Key card / Manual provided.

DIGESTIVE SYSTEM

ZX-1311PN Digestive System Model PVC



- Price Rs. 15930.00 (A)
- Life size • Made of PVC
- Dissectable in 2 parts.
- The oral cavity, the pharynx and the first part of the esophagus are dissected along the medial sagittal plane. The liver is shown together with the gall bladder and the pancreas is dissected. The Stomach is open along the frontal plane; the duodenum, caecum, part of the small intestine and the rectum are open to expose the interior. The transverse colon is removable. The relief model of the head shows the anatomy of the mouth with salivary glands.
- Mounted on base.
- 51 features marked.
- Key card / Manual provided.

ZX-1301A Human Digestive System



- Price Rs. 5664.00 (A)
- Life size • Made of HSP resin
- Relief model of human digestive system in median section dissectible into 3 parts.
- Duodenum, caecum and rectum are opened. Rectum is unfolded.
- Transverse colon and front half of the stomach are removable.
- The model features the oral cavity, pharynx, esophagus, stomach, liver with gall bladder, pancreas, GI tract and spleen.
- Mounted on sturdy wooden base.
- 56 features marked.
- Key card / Manual provided.

ZX-1446PN

Liver Section & Gallbladder



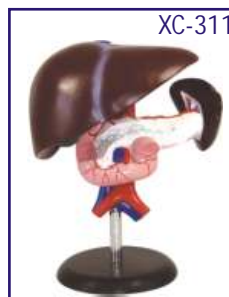
- Price Rs. 6372.00 (A)
- Life size • Made of PVC
- Model shown liver and gallbladder in open section to expose the complex internal network of arteries, veins and bile ducts.
- Model is displayed in bright different colors for clarity and ease of examination.
- Mounted on base with stand.
- 17 features marked.
- Key card / Manual provided.

XC-312 Liver Model



- Price Rs. 5782.00 (A)
- An economical way to study the basic structure of the liver.
- The complex vessels network in the opened liver, displayed in different colors on this model : hilus vessels, extra-hepatic and intra-hepatic bile ducts. Liver mounted on stand.

XC-311 Liver, Pancreas & Duodenum Model



- Price Rs. 3776.00 (A)
- To study the basic structure of the liver, spleen, blood vessels and pancreas.
- External structure are illustrated as well as the pancreatic duct of the pancreas.
- This model also shows the abdominal aorta & inferior vena cava.
- Life-size. Dissectible into 3 parts.
- Made of PVC. Size: 23 x 12.5 x 26 cm.



ZX-1416PN Liver Model PVC

- Price Rs. 4602.00 (A)
- Life size • Made of PVC
- Model shows lobulation, liver ligaments, portal structure, gallbladder, bile duct system.
- Mounted on base.
- 8 features marked.
- Key card / Manual provided.



ZX-1408 Stomach

- Price Rs. 2714.00 (A)
- 17x16x25 cm. • Made of HSP resin
- Dissectable in 2 parts.
- It shows different muscle layers of stomach wall.
- Model shows lower esophagus, vessels and nerves.
- Mounted on stand with base.
- 36 features marked.
- Key card / Manual provided.



XC-306 Stomach Model

- Price Rs. 3304.00 (A)
- Made of hard plastic
- Magnified 2 times the natural size
- Shows the morphology of the stomach in a distended state.
- With the longitudinal section, the model shows the structures of the gastric folds, pyloric valve, pyloric sphincter muscles, gastric mucosa and the transitional mucosa of the gastric-esophagus.

ZX-1434P Caecum and Appendix, Enlarged



- Price Rs. 4720.00 (A)
- Size : 1.5 times enlarged
- Made of PVC
- Dissectable in 2 parts
- Mounted on display stand
- Caecum, appendix and its attachment to the large intestine demonstrated.
- Model can be opened to depict folds & texture of internal anatomy.
- Removable portion secured with magnets.
- Key card / Manual provided.

ZX-1514P Rectum Pathologies Model



- Price Rs. 4071.00 (A)
- Size : 22 x 12.5 x 11 cm
- Made of PVC
- Mounted on display stand
- Pathological conditions of the rectum and anus includes- ulcerative colitis, internal & external fistula, internal & external hemorrhoids, annular cancer, sessile polyp, submucosal abscess, skin tag, pedunculated polyp, supralelevator abscess, ischioanal abscess, cryptitis, diverticulum, condyloma acuminatum, fissure and condyloma latum.
- Key card / Manual provided.

ZX-1606 Intestinal Villi

- Price Rs. 2950.00 (A)
- 31x20x43 cm.
- Made of HSP resin.
- Highly enlarged 3D replica model of small intestine shows one entire villus, one sectioned villus with arterioles and venules and one sectioned villus with lymphatic vessels. The model also shows different muscle layers in section.



- Mounted on sturdy wooden base.
- 17 features marked.
- Key card / Manual provided.

ZX-1511P Diabetes Mellitus Complications Model



- Price Rs. 9912.00 (A)
- Made of PVC
- Easy to remove and assemble.
- The model shows the effects of diabetes on the brain, eye, heart, kidney, artery, pancreas, neuron and foot.
- Model can be used to illustrate effects associated with diabetes: stroke, non-inflammatory disease of the retina, hypertensive heart disease, hardening of the kidney, hardening of the arteries, insulin resistance, neuropathy, and foot ulcerations.
- Key card / Manual provided.

HEART & CIRCULATORY SYSTEM

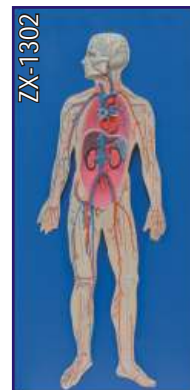
ZX-1312PN Circulatory System Model PVC



- Price Rs. 17110.00 (A)
- Size : Half life Size
- Made of PVC
- This model is a half life-size relief model which includes a 2 part removable heart and exceptional details.
- Following anatomical structures are in detail: The arterial/venous system, the heart, the lungs, the liver, the spleen, kidneys, and a partial skeleton.
- Mounted on base.
- 70 features marked.
- Key card / Manual provided.

ZX-1302

Human Circulatory System



- Price Rs. 5664.00 (A)
- Half life size
- Made of HSP resin
- Model shows following anatomical structures : Arterial and venous system, Heart showing chambers, Liver, Spleen, Lung, Kidneys, Partial skeleton.
- Mounted on wooden base.
- 81 features marked.
- Key card / Manual provided.

ZX-1500 Blocked Artery Model

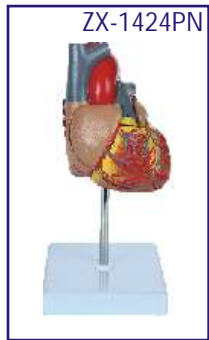


- Price Rs. 1888.00 (A)
- 12x8x4 cm.
- Made of HSP resin
- The model shows 4 stage cross section of narrowing of an artery due to build up of cholesterol and plaque.
- Four stages depict normal artery, fatty streak, fibrous plaque & blockage in order.
- All stages rotate on a hinge pin.
- 8 features marked.
- Key card / Manual provided.

ZX-1611E Blood Groups

- Price Rs. 2596.00 (A)
- 60 x 25 x 6 cm.
- Made of soft PVC
- The model shows eight blood types ie. blood type A-/A+/B-/B+/AB-/AB+/O-/O+ (according to the presence or absence of antigens & Rh factor).
- Mounted on board.
- 12 features marked.
- Key card / Manual provided.

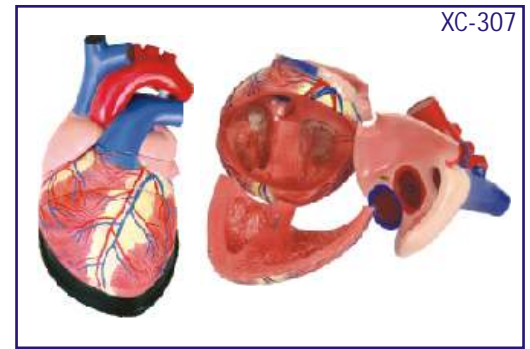




ZX-1424PN

Heart Model Deluxe Life Size 2 Parts

- Price Rs. 3127.00 (A)
- Life size • Made of PVC • Dissectable in 2 parts
- Model parts held together with hidden magnets.
- The front wall of the heart can be removed and replaced easily, allowing for easy study of the internal structures of the heart.
- Mounted on base • 34 features marked.
- Key card / Manual provided.



XC-307

XC-307 Jumbo Heart Model

- Price Rs. 5192.00 (A)
- Size: 25×23×23 cm.
- Made of PVC plastic.
- Clear conception of routes of the systemic and pulmonary circulation.
- Dissectible into 3 parts. 4 times enlarged.



ZX-1405E

ZX-1405E Human Heart (7 Parts)

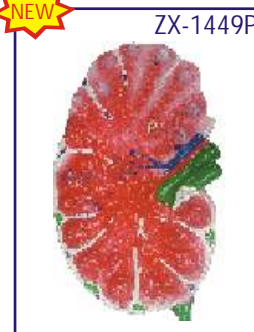
- Price Rs. 2596.00 (A)
- 20 x 20 x 22 cm.
- Made of HSP resin
- Model is sectioned to expose ventricles, atria, and valves.
- Model also depicts blood vessels of heart and heart musculature in detail.
- 33 features marked.
- Keycard / Manual provided.



ZX-1309

ZX-1309 Pumping Heart

- Price Rs. 2301.00 (A)
- A 3-D working plastic heart model with clear chambers. Squeeze bulb pumps simulated blood through clear heart chambers just like real one.
- Complete heart model with display stand.
- Complete instruction manual.
- Acrylic Paints & Brush are included.

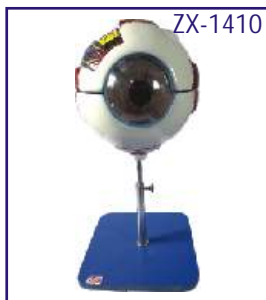


ZX-1449P

ZX-1449P Lymph Node

- Price Rs. 2301.00 (A)
- Size: 32x20x10 cm.
- Made of PVC.
- Model shows anatomical features of a lymph node such as capsule, lymph vessels, cortical follicles, blood vessels, trabecula and germinal center.
- Key card / Manual provided.

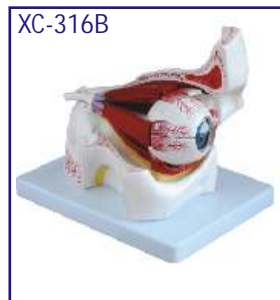
EYE



ZX-1410

ZX-1410 Eye Model on Stand

- Price Rs. 2242.00 (A)
- 15x15x32 cm. Model is highly magnified (6 times enlarged).
- Model is in 7 parts.
- Ideal for basic anatomical study of eye. shows sclera, cornea, eye muscle attachments, iris, retina, optic nerve & venels.
- Mounted on a removable stand.
- 34 features marked.
- Key card / Manual provided.



XC-316B

XC-316B Eye with Orbit

- Price Rs. 8496.00 (A)
- The model shows the eyeball with optic nerves & muscles in its natural position in the bony orbit.
- Dissectible into 10 parts.
- 3 times enlarged.



XC-316

XC-316 Giant Eye Model

- Price Rs. 3717.00 (A)
- Size: 15.5cm. Made of PVC. Mounted on a plastic stand. 6 times enlarged Model. The different parts of the eyeball model are detachable.
- Tunica external: showing cornea and sclera with attachments of ocular muscles and optic nerve.
- Tunica media: showing the iris, the ciliary body and the chorioid. Tunica interna is retina.
- Refraction media: showing the lens and the vitreous body.

RESPIRATORY SYSTEM

ZX-1306 Human Respiratory System



- Price Rs. 5664.00 (A)
- Size : 40x80 cm. • Made of HSPresin.
- Well illustrated and informative.
- Upper half of the model displays nasal cavity, oral cavity, trachea, bronchia, bronchial tree in pulmonary lobe, right and left lungs cut open, heart in situ, pulmonary blood vessels and diaphragm with muscles attached to it.
- Lower half of the model shows enlarged pulmonary acinus displaying pulmonary alveoli, alveolar sacculles, bronchial artery and veins and alveolar capillary network.
- Model is accurately made from actual specimen references, photographs and encyclopedia reference under expert guidance.
- Mounted on wooden sturdy base board.
- 38 features marked.
- Keycard / Manual provided.

XC-301 Human Larynx Model Magnified

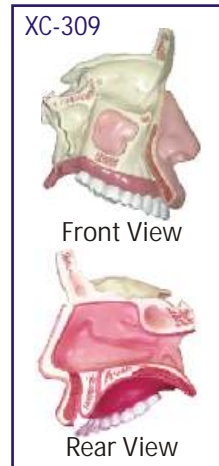


- Price Rs. 2301.00 (A)
- Size : 11.5x11x24 cm, 3 parts dissectible.
- A functional model, On base 3 times enlarged.
- Shows movements of epiglottis & cartilages in the voice box.
- Helps to understand the morphology & structure of the respiratory tract and phonetic organ.



XC-324 Model of the Head

- Price Rs. 7316.00 (A)
- The relief model of human head shows all relevant structures in great details.
- The high quality model is delivered on a base board for easy display
- Natural size.
- Showing interior parts of the oral cavity and pharynx with network of vessels.



XC-309

Front View

Rear View

XC-309 Model of the Anatomical Nasal Cavity

- Price Rs. 2301.00 (A)
- This model helps the students to understand:
- External nose : shows the section of the nasal bones and cartilages.
- Nasal cavity : on the lateral nasal wall show the superior, middle and inferior nasal conchae project medially into the nasal cavity forming the superior, middle and inferior nasal maxillary sinuses.
- Paranasal sinuses : shows the frontal, sphenoid and maxillary sinuses.

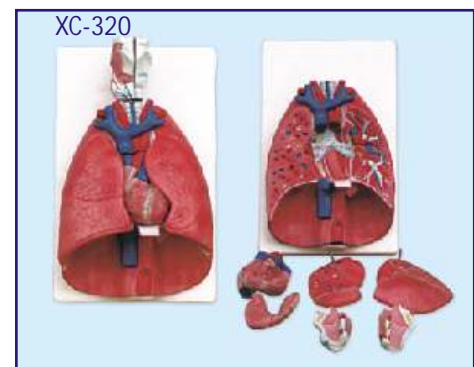


ZX-1444PN

NEW

ZX-1444PN Nasal Oral Cavity Model, Sagittal Section

- Price Rs. 3481.00 (A)
- Life size • Made of PVC
- This model shows the interior parts of nasal cavity, oral cavity, throat and pharynx.
- Sagittal section • Mounted on base.
- 12 features marked.
- Key card / Manual provided.



XC-320

ZX-S320PN Respiratory System Model 7 Parts PVC



ZX-S320PN

NEW

- Price Rs. 14042.00 (A)
- Life size • Made of PVC
- Dissectable in 7 parts
- Showing the larynx (dissected along the sagittal plane), the lungs (dissected along the frontal plane) & a 2 parts heart.
- Mounted on base.
- 51 features marked.
- Key card / Manual provided.

XC-320

Larynx, Heart and Lungs Model

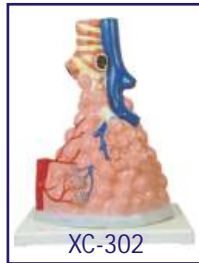
- Price Rs. 11210.00 (A)
- Life size, 36 x 23 x 12 cm
- Dissectable in 7 parts
- Made of PVC plastic

XC-302

Pulmonary Alveoli Model Magnified

• Price Rs. 3304.00 (A)

- Size: 26 × 15 × 35 cm.
- Made of PVC plastic and mounted on plastic base.
- The model shows the small branches of principal bronchus:
- Section of bronchiole of no cartilage.
- The relation between pulmonary alveoli & terminal bronchiole.
- The structure of alveolar sac and alveolar duct
- The capillary rete in the alveolar septa.



XC-330 Model of the Transparent Lung Segment

• Price Rs. 10030.00 (A)

- Presents 10 segments in the right lung and 8 in the left. The distributions of the bronchial tree can be observed through the transparent lungs.
- Right lung: right upper lobe (3 segments), right middle lobe (2 segments), right inferior lobe (5 segments)
- Left lung: left upper lobe (4 segments), left inferior lobe (4 segments).
- Distribution of the bronchial tree: right bronchus, left bronchus.
- Hilus of lung. The lung made of transparent plastic. The trachea & bronchial tree is made of PVC.



SKIN & EAR

ZX-1604A



ZX-1604A Skin Model

• Price Rs. 2478.00 (A)

- 21x10x25 cm. • Made of HSP resin
- Model shows 3-D section of human skin.
- The model represents differentiated skin layers, hair, sweat glands, sebaceous glands, blood vessels, nerves and receptors for detailed examination.
- Mounted on sturdy wooden board for easy display.
- 35 features marked.
- Keycard / Manual provided.

XC-313



XC-313 Skin Model Enlarged

• Price Rs. 3953.00 (A)

- A greatly enlarged (105 times) cross sectional view of the human skin showing three layers-epidermis, dermis, hypodermis, structures of the human scalp and a close-up view of a hair follicle, sweat gland, fatty tissue, sebaceous gland, blood vessels & nerves. Front, side and back view.
- Mounted on a plastic base.
- Size: 27 × 10 × 31cm.

ZX-1401



ZX-1401 Human Skin

• Price Rs. 1593.00 (A)

- Size 30x35 cm.
- Made of HSP resin.
- The skin relief model of a skin section of the head.
- Skin section portrays the anatomy of the skin at 70 times life size.
- The skin model shows:- Representation of hair follicles with sebaceous glands, Sweat glands, Receptors, Nerves, Blood Vessels, Different layers of the skin.
- Mounted on sturdy wooden base.
- 31 features marked.
- Keycard / Manual provided.



XC-303C

XC-303C

Ear Model New Style Giant Size

• Price Rs. 3953.00 (A)

- Dissectible in 6 parts.
- Made of PVC Plastic.
- Size 33x15x23 cm.

REPRODUCTIVE SYSTEM

ZX-1304 Human Reproductive System Male

- Price Rs. 5664.00 (A)
- 40x80 cm. • Made of HSP resin
- Upper half part shows median section of the system.
- Internal organs (accessory organs) shown in great detail are epididymis, vas deferens, ejaculatory ducts, urethra, seminal vesicles, prostate gland and bulbourethral gland.
- External structures shown are penis, scrotum and testicles.
- Lower half shows the model of scrotum and contents along with the penis.
- 41 features marked.
- Key card / Manual provided.



ZX-1305 Human Reproductive System Female

- Price Rs. 5664.00 (A)
- 40x80 cm. • Made of HSP resin
- Upper half model shows both ovaries, left ovary in section, fallopian tubes with fimbriae, uterus, cut open vagina to show vaginal folds and cervix, bladder with cut open urethra, labia and rectum.
- Lower half model shows adnexa of uterus.
- 56 features marked.
- Keycard / Manual provided.



ZX-1417PN Male Pelvis Section Diss. PVC



- Price Rs. 11800.00 (A)
- 30x22.5x27.5 cm • Made of PVC
- Dissectable in 4 parts
- Open through the medial sagittal section of male pelvis, this model shows the internal organs of urinary, male reproductive system and muscular anatomy
- Mounted on base.
- 26 features marked.
- Key card / Manual provided.

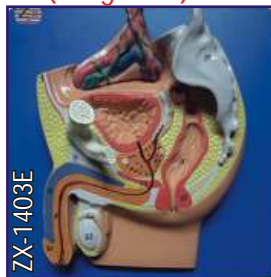


ZX-1418PN Female Pelvis Section Diss. PVC

- Price Rs. 12272.00 (A)
- 30x22.5x27.5 cm • Made of PVC
- Dissectable in 3 parts
- This model shows the urinary and female reproduction system along with muscular anatomy
- Half of the pelvis is shown, along with a removable attachment to see the outer reproductive organs
- Mounted on base.
- 27 features marked.
- Key card / Manual provided.

ZX-1403E Male Pelvis Small (Magnetic)

- Price Rs. 1593.00 (A)
- 25x25x8 cm. • Made of HSP resin
- Model is in 3 parts.
- Median section model shows male genital organs in normal position.
- Model is mounted on board.
- 36 features marked.
- Key card / Manual provided.



ZX-1404E Female Pelvis Small (Magnetic)

- Price Rs. 1593.00 (A)
- 25x25x8 cm. • Made of HSP resin
- Model is in 2 parts.
- Median section model shows female genital organs in normal position.
- Model is mounted on board.
- 31 features marked.
- Key card / Manual provided.



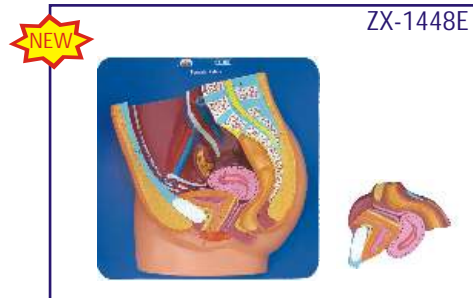
ZX-1441PN Female Uterus Ovary Model

- Price Rs. 3894.00 (A)
- Life size • Made of PVC
- It shows sectioned vagina, cervix, uterus, fallopian tubes and ovary with follicles.
- Mounted on a Stand.
- 23 features marked.
- Key card / Manual provided.



ZX-1445P Female Pelvic Anatomy Model

- Price Rs. 2596.00 (A)
- Size: 18x14x14.5 cm.
- Model is showing anatomy of median sagittal section of the female pelvis.
- Suitable for pharmaceutical promotion.
- Mounted on base.
- Key card / Manual provided.



ZX-1448E Female Pelvis 2 Parts

- Price Rs. 2950.00 (A)
- Size 30x30x10 cm
- Made of HSP
- Total 22 parts labeled.
- Sagittal section of female pelvis in 2 parts.
- Model shows all important organs of female pelvis.
- Key card / Manual provided.

EXCRETORY SYSTEM



XC-331

Male Urogenital System

- Price Rs. 3481.00 (A)
- This is intended to understand the external features of the kidney, urinary bladder, penis and testicle.
- Made of PVC Plastic.
- Size 20 x 20 x 50 cm.



XC-332

Female Urogenital System

- Price Rs. 3481.00 (A)
- It shows kidney, ureter, urinary bladder, vagina, ovary membrane, uterus, ligaments and artery etc.
- Made of PVC plastic.
- Size 20 x 20 x 50 cm.



ZX-1407

ZX-1407 Kidney

- Price Rs 2537.00 (A)
- Size: 3x of life size.
- Made of HSP resin
- Shows a longitudinal section of the left kidney.
- Mounted on stand.
- 31 features marked.
- Key card / Manual provided.



ZX-1303

ZX-1303 Human Excretory System

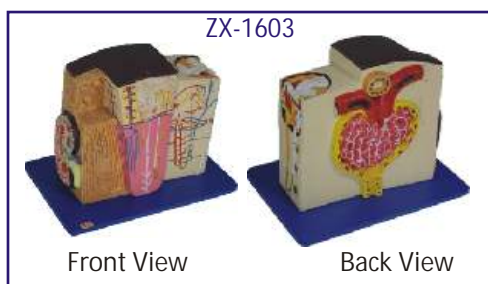
- Price Rs. 5664.00 (A)
- 40x80 cm • Made of HSP resin
- Delivered on wooden baseboard for easy display.
- It shows the structures of the retroperitoneal cavity which includes : descending aorta, inferior vena cava, renal veins and arteries, ureter, urinary bladder cut open to show trigone and other structures, adrenal glands, both kidneys, iliac vessels and prostate gland.
- Left kidney and left adrenal gland in section.
- Model also shows testis and penis in section.
- The model has anatomical details that makes it a great teaching aid.
- 36 features marked.
- Key card / Manual provided.



ZX-1513P

ZX-1513P Kidney Pathologies Model

- Price Rs. 3953.00 (A)
- Size: 15 x 9 x 3 cm.
- It shows pathological complications of a kidney like infection, scarring, atrophy, urinary (kidney) stones, tumors, polycystic disease and hypertension on one side.
- The other side shows a normal kidney features.
- Mounted on base.
- Key card / Manual provided.



ZX-1603

ZX-1603 Kidney Microstructure

- Price Rs. 5310.00 (A)
- 30x20x24 cm • Made of HSP resin
- Beautifully painted in advanced colours.
- A complete 3-D model shows 5 sides view of following structures in great details : kidney in section, parenchyma of kidney and nephron, renal corpuscle and associated structures, loop of henle and associated structures.
- Mounted on sturdy wooden base.
- 45 features marked.
- Key card / Manual provided.



XC-310-3

XC-310-3 Human Kidney with Adrenal Gland

- Price Rs. 3186.00 (A)
- Life-size model features the kidney, adrenal gland, renal and adrenal vessels and upper portion of the ureter.
- Dissectible into 2 parts to reveal the cortex medulla, cortex vessels and renal pelvis.
- Model can be removed from the stand for instruction and patient education.
- Size: 12.5 x 12.5 x 20 cm.



ZX-S333P

ZX-S333P Urinary System Block Model Dual Sex, 6 Parts

- Price Rs. 15222.00 (A)
- Life Size • Made of PVC
- Mounted on stand. • Dual sex
- It shows components of urinary system, posterior abdomen wall, kidney, adrenal gland & bladder.
- It also shows pelvic bone and muscles, Inferior vena cava, aorta with its branches including iliac vessels and Rectum.
- One front half of a kidney is removable
- Key card / Manual provided.

BRAIN & NERVOUS SYSTEM



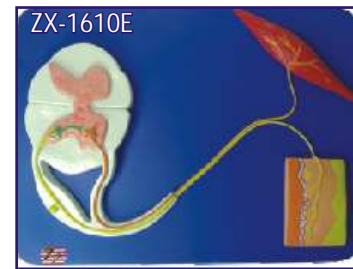
- XC-308 Brain with Arteries**
- Price Rs. 3304.00 (A)
 - Made of PVC plastic.
 - Dissectible into 8 parts. On base.
 - Natural size: 18.5×14×13.5cm.
 - External features of the brain: cerebral hemisphere, brain stem, cerebellum.
 - The arterial supply of the brain: sources, vertebral, internal carotid arteries, arterial supply of the cerebellum and cerebrum.



- XC-318 Brain With Arteries on Head**
- Price Rs. 6962.00 (A)
 - This model shows the brain structure inside the skull. Two halves brains can be disassembled into: frontal with parietal lobes, temporal with occipital lobes, half of brain stem, half of cerebellum.
 - Life-size, dissectible into 9 parts.



- ZX-1422PN Brain Model Deluxe Enlarged 4 parts**
- Price Rs. 18408.00 (A)
 - Size : 1.5 times enlarged
 - Made of PVC
 - Dissectable in 4 parts
 - Showing the temporal and occipital lobes, the frontal & parietal lobes, the cerebellum, the brain stem in different colors.
 - Mounted on metal stand with wooden base.
 - 142 features labeled & relevant descriptive names written directly on model.
 - Key card / Manual provided.



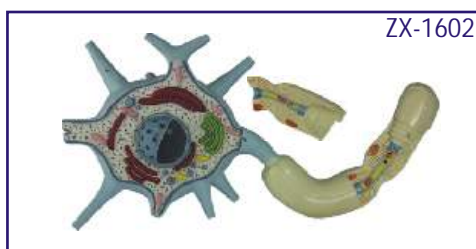
- ZX-1610E Reflex Arc**
- Price Rs. 2596.00 (A)
 - 30x40x3 cm.
 - Made of HSP resin
 - The model shows sensory, neural & motor elements of a complete reflex arc.
 - Mounted on sturdy wooden base.
 - 22 features marked.
 - Key card / Manual provided.



- ZX-1317PN Nervous System Model PVC**
- Price Rs. 18880.00 (A)
 - Size : Half size
 - Made of PVC
 - Well illustrated and informative
 - Beautifully painted in bright colors
 - Model is accurately made from actual specimen references, photographs and encyclopedia reference under expert guidance.
 - Model is great teaching tool for anatomy lessons.
 - Mounted on base.
 - 33 features marked.
 - Key card / Manual provided.



- ZX-1307 Human Nervous System**
- Price Rs. 5664.00 (A)
 - Half life size
 - Made of HSP resin
 - Model is a schematic representation of the central and peripheral nervous system, including spinal nerves radiated from central nervous system to other parts of body.
 - Mounted on wooden base board.
 - 39 features marked.
 - Key card / Manual provided.



- ZX-1602 Neuron**
- Price Rs. 4307.00 (A)
 - 30x20x12 cm
 - Made of HSP resin.
 - Motor neuron model in three-dimension.
 - Model shows branching dendrites, myelin-wrapped axon and node of Ranvier.
 - Removable axon section shows cytological ultra structure, layers of myelin sheath, neurolemma and schwann cell.
 - 19 features marked.
 - Key card / Manual provided.

CPR MANIKINS



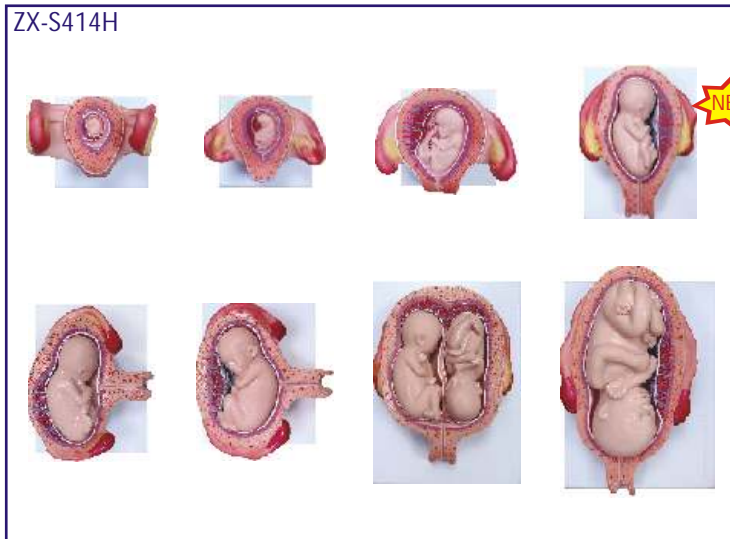
MB001B+ (AD)
CPR Training Manikin Advance (Torso)

• Price Rs. 22420.00 (A)

- Features and Function:
- Two in one simulator - Adult/Child
- Exclusive three position selector dial
- Breathing function : Real-like system
- Jaw thrust maneuver
- AED compatible (AED not included)
- Ultra hygienic
- Unique one-way valve
- Realistic opening of airway
- Clicking sound to check correct compression depth
- Accessories include Travel Bag.

MB001 (AD) CPR Training Manikin Advance (Torso)
• Price Rs. 21240.00 (A)
• MB001 (AD) same above but without Travel Bag.

GYNAE & OBSTETRIC MODLES



ZX-S414H
Fetal Development Model set of 8
• Price Rs. 27730.00 (A)

- Size : Half size • Made of PVC
 - Each model mounted on separate base.
 - Shows the development from ovum to the fetus in 7th month.
- | | |
|---------------------------------------|--|
| A: 1st Month Embryo | E-I: 5th Month Foetus (Transverse Lie) |
| B: 2nd Month Embryo | E-II: 5th Month Foetus (Transverse Lie) |
| C: 3rd Month Embryo | E-III: 5th Month Twin Foetuses (Normal Position) |
| D: 4th Month Foetus (Breech Position) | F: 7th Month Foetus |
- Keycard / Manual provided.

ZX-1706PN Human Embryo Model, Enlarged (Four weeks old)



- Price Rs. 3540.00 (A)
- Size : 25 times enlarged
- Made of PVC
- 20 parts labeled in total.
- Well illustrated and informative.
- Great for studying human development and having as a desktop model for quick reference and for education.
- Key card / Manual provided.

ZX-1700PN Human Placenta Model with Cord



- Price Rs. 5546.00 (A)
- Size : Life size • Made of PVC
- It shows structure of placenta from maternal & fetal side both.
- It also shows the relation between placenta and umbilical cord.
- Umbilical cord clearly shows umbilical vessels
- Maternal side: shows dark maroon structure of the decidua featuring the cotyledons
- Fetal side: reveals the amnion (amniotic membrane) partially removed, exposing the intervillous space.
- 8 features marked. • Key card / Manual provided.

DENTAL MODELS



ZX-1427

ZX-1427

Teeth Care Model Enlarged with Giant Teeth Brush

- Price Rs. 3422.00 (A)
- 15x16x22cm , 3 x Life size
- Made of PVC
- Model shows complete set of teeth with gums & tongue.
- A flexible joint between the jaws allows easy movement.
- Key card / Manual provided.



ZX-1411

ZX-1411

Dental Care Model

- Price Rs. 2183.00 (A)
- Highly enlarged dental model with normal tooth brush.
- Size : 22x16x15 cm.



ZX-1442

ZX-1442

Dental Model Life Size

- Price Rs. 590.00 (A)
- Life size
- It shows the upper & lower jaw hinged with rod & screw.
- 28 fixed non removable teeth shown.
- Key card / Manual provided.



ZX-1512P

ZX-1512P Dental Caries Model

- Price Rs. 3953.00 (A)
- Size: 4 times enlarged
- Shows cavities in 3 molars removable from gum sockets.
- Each molar is longitudinally sectioned in 2 parts.
- 3 progressive stages of cavities (shallow, medium and deep) are shown, one in each molar.
- Morphological structure of the molar tooth is well depicted.
- Key card / Manual provided.



ZX-1443

ZX-1443 Dental Practice Typodont Model

- Price Rs. 5015.00 (A)
- Life size
- 28 removable teeth in this model.
- Students will be able to practice preparing the teeth for restoration, whether that is cavity fillings, crowns, or bridges.
- The model features plastic teeth screwed with metal screws in place, soft gingiva, and a soft palate. One crosshead mini screwdriver is provided to remove the teeth.
- A metal hinge holds the top and bottom jaws together.
- Key card / Manual provided.



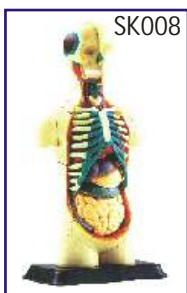
ZX-1442K

ZX-1442K Oral Hygiene Training Kit

- Price Rs. 826.00 (A)
- Life size Dental Model.
- Play -way kit to understand teeth structure and technique for proper oral hygiene.
- Includes: Teeth model, tooth brush, clay, dice & pawns, sketch pen, booklet.

BUILD YOUR ANATOMY MODELS

- New Type of Puzzle • Highly Detailed Finish • Collectible Quality • Dissectable in Small Parts • Display Stand •



SK008

SK008 Human Body Anatomy Model

- Price Rs. 2360.00 (A)
- Size 12.7 cm
- 32 pieces set.



SK009

SK009 Heart Anatomy Model

- Price Rs. 2360.00 (A)
- Size 14 cm
- 31 pieces set.

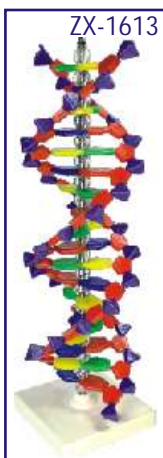


SK010

SK010 Cranial Nerve Skull Anatomy Model

- Price Rs 2360.00 (A)
- Size 9 cm
- 39 pieces set.

HISTOLOGY AND BIOMOLECULES MODELS



ZX-1613 DNA Model

- Price Rs. 3068.00 (A)
- Stands 40cm tall
- Made of Plastic
- Mounted on stand.
- 18 layers, 9 each of AT& GC.
- Handy demonstration model of DNA helix.
- Parts are colour coded and represent purines, pyrimidines, deoxyribose & phosphate groups that make up the double helix of DNA.
- Model is great teaching tool.
- Keycard / Manual provided.



DN001

DNA Model Kit

- Price Rs. 2183.00 (A)
- Made of Plastic.
- Ready to assemble model.
- Size: 10 × 10 × 45 cm.



ZX-1608

ZX-1608 Cardiac Muscle Fibre

- Price Rs. 3186.00 (A)
- Block model is greatly enlarged cardiac muscle fibre.
- The model shows significant anatomical structures such as sarcolemma, nucleus, mitochondria, transverse tubules, cardiomyocytes, sarcoplasmic reticulum, intercalated disc, M line, Z disc & various filaments.
- Mounted on durable wooden base.
- Size: 41 x 20 x 19 cm
- 17 parts labeled in total.



ZX-1607

ZX-1607 Smooth Muscle Fibre

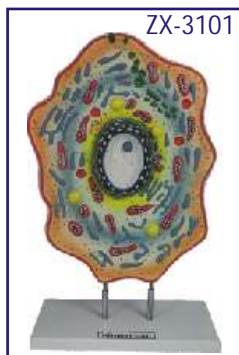
- Price Rs. 3186.00 (A)
- Block model is a greatly enlarged smooth muscle fibre.
- The model shows significant structures including sarcoplasm, nucleus, mitochondria, dense body, filaments, autonomic neurons and gap junction.
- Size: 36 x 25.5 x 13 cm
- 18 parts labeled in total.

ZX-1609 Skeletal Muscle Fibre

- Price Rs. 3068.00 (A)
- Block model is greatly enlarged model of skeletal muscle fibre.
- Model shows various anatomical structures like neuromuscular junction. T tubules, myofibrils, bands, nucleus etc.
- Mounted on wooden base. • 21 parts labeled in total.
- Size: 20x20x19 cm.



ZX-1609



ZX-3101

ZX-3101 Animal Cell Model

- Price Rs. 2950.00 (A)
- Made of high grade synthetic polymer having long durability.
- Delivered with removable stand.
- Size: 30x40x10 cm.
- Well illustrated & informative.
- 19 features marked.
- Beautifully painted in bright colors.



ZX-2103

ZX-2103 Plant Cell Model

- Price Rs. 2950.00 (A)
- Plant cell model depicts magnified view with all important structures such as chloroplast, mitochondria, nucleus, golgi bodies etc.
- Mounted on sturdy wooden base.
- Size: 35 x 15 x 49 cm.
- 17 features marked.



ZX-2100

ZX-2100 Chloroplast

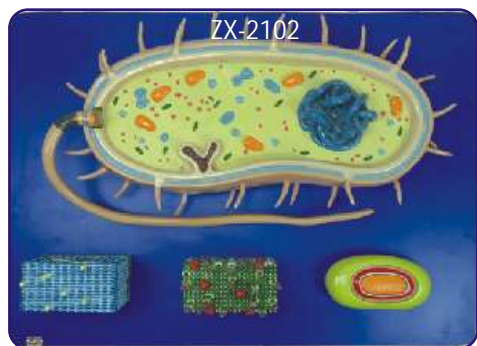
- Price Rs. 6726.00 (A)
- Block model is highly enlarged open section of a typical chloroplast.
- Model shows inner & outer membranes, granum, stroma, DNA, starch granule, Osmiophilic globule and thylakoids.
- Mounted on sturdy wooden base.
- Size: 36 x 25.5 x 19 cm.
- 13 features marked.



ZX-2101

ZX-2101 Mitochondria

- Price Rs. 2655.00 (A)
- Block model is highly enlarged open section of typical mitochondria.
- Model shows outer and inner membranes, cristae, ribosomes, matrix, mitochondrial DNA, etc.
- Mounted on sturdy wooden base.
- Size: 41 x 21 x 13 cm.
- 10 features marked.



ZX-2102 Bacterium

• Price Rs. 6726.00 (A)

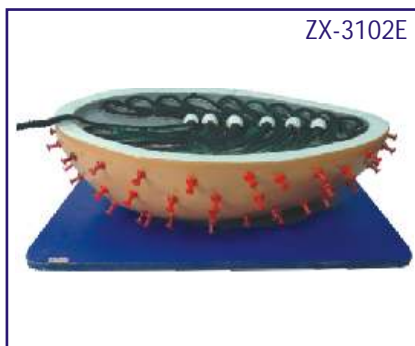
- Model is greatly enlarged bacterium model depicting anatomical complexity of a general prokaryotic cell.
- The model is a set of 4 models including block models of the cell wall of gram positive and gram negative bacteria, opened bacterial spore showing spore coat & internal structures and main bacterium.
- Mounted on sturdy wooden base.
- Size : 55x40x9.5 cm.
- 34 features marked.



ZX-3100E AIDS VIRUS

• Price Rs. 1888.00 (A)

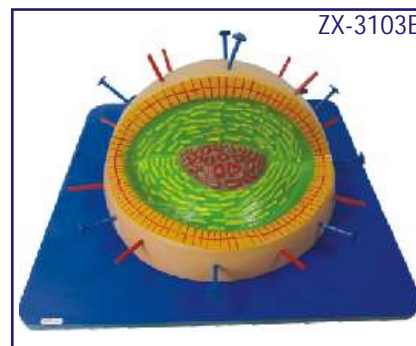
- Highly enlarged detailed model of HIV (Human Immunodeficiency Virus) commonly called AIDS virus.
- Model shows outer lipid membrane with protein structures, internal nucleus with viral RNA.



ZX-3102E Rabies Virus

• Price Rs. 3481.00 (A)

- Model of rabies virus is enlarged millions of times to show viral RNA, lipid envelope, glycoprotein, polymerase etc.
- Mounted on wooden base.
- Size : 35x25x10 cm.
- 6 features marked.



ZX-3103E Influenza Virus

• Price Rs. 3481.00 (A)

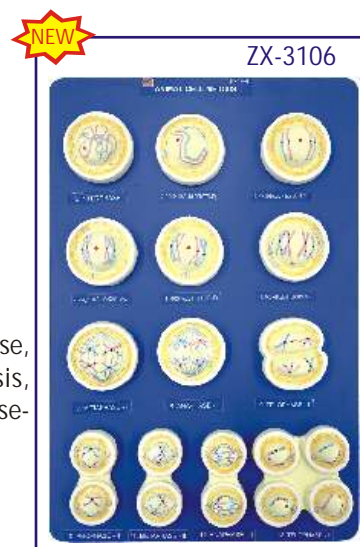
- This millions of times enlarged model of influenza virus shows lipid envelope, capsid, nucleoprotein, hemagglutinin and neuraminidase.
- Mounted on wooden base.
- Size : 35x35x16 cm.
- 5 features marked.



ZX-3105 Mitosis Model

• Price Rs. 5664.00 (A)

- Set of 10 stages model showing interphase, early prophase, mid prophase, late prophase, early metaphase, late metaphase, early anaphase, late anaphase, telophase and cytokinesis.
- Mounted on board.
- Size: 60x40x5 cm.
- With key card/manual.



ZX-3106 Meiosis Model

• Price Rs. 5664.00 (A)

- Set of 13 stages model of meiosis showing interphase, leptotene, zygotene, pachytene, diplotene, diakinesis, metaphase-I, anaphase-I, telophase-I, prophase-II, metaphase-II, anaphase-II and telophase-II.
- Mounted on board.
- Size: 60x40x5 cm.
- With key card/manual.

TELESCOPE & BINOCULAR

TELESCOPE (F70060)



- Eyepiece : 20mm/12.5mm/4mm
- Magnification : 35x/56x/175x
- 1.5x & 3x Barlow lens
- Focal length : 700 mm
- Objective dia : 60 mm
- Coated Lens
- Aluminium tripod

• Price Rs. 6490.00 (A)

TELESCOPE (F70076)



- High magnification
- One erecting eyepiece : 1.5x
- One 3x Barlow lens
- Focal length : 700 mm
- Objective dia : 76 mm
- Huygen eyepiece: H20 mm & H12.5 mm
- Symmetric Ramsden eyepiece : SR4mm

• Price Rs. 9204.00 (A)

10 x 50MM BINOCULARS (BN1050)



- Rubber covered body
- Superior Lenses

- 10x magnification
- Focusing Knob
- Neck strap
- Eye piece with rubber coating
- 50mm dia objective

• Price Rs. 3540.00 (A)

ROCKET MODELS



ZX-4111 ROCKET GSLV Mk-III

• Price Rs. 59000.00 (A)

- The Geosynchronous Satellite Launch Vehicle (GSLV) Mk-III is the most prestigious rocket developed by India. The GSLV Mk-III can place satellites weighing 2000-2500 kg into the Geosynchronous Transfer Orbit (GTO). The GSLV Mk-III is a three-stage vehicle. The first stage consists of two S200 solid boosters attached to the core rocket. The second stage of the main rocket is a liquid-fueled stage. The third stage is powered by a single CE-20 engine, which is the first cryogenic engine developed by India.
- Details of the model of the GSLV Mk-III rocket :
 - Height of the main rocket: 181 cm.
 - Height of the rocket boosters: 113 cm.
 - Diameter of the main rocket: Approx 20 cm.
 - Diameter of the rocket boosters: Approx 14 cm.
 - Size of the Base L X B X H: 76 X 45 X 13 cm.



ZX-4100E

ROCKET MODEL

- Price Rs. 1534.00 (A)
- Small size.
- Height 44 cm.

ZX-4101E

ROCKET MODEL

- Price Rs. 2124.00 (A)
- Large size.
- Height 71 cm.

SCIENCE TEACHING KITS

CS015 STUDENT BALANCE KIT

• Price Rs. 1298.00 (A)

- | | | |
|---------------------|-----------------------|-------------------------|
| • 4 x Weights | • 2 x Levers | • 1x Central Axial |
| • 4 x Arms | • 2 x Triangle axials | • 1x Pivoted weight |
| • 2 x Weighing pans | • 2 x Pointers | • 2 x Arms side holders |
| | • 2 x Scales | |



Age 6+

CS015

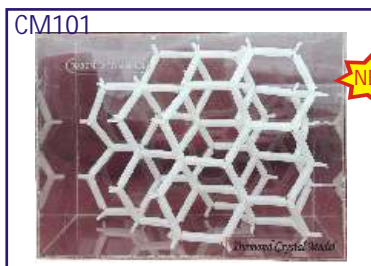


AM001

AM001 ATOMIC MODEL SET SUPERIOR

• Price Rs. 8437.00 (A)

- The set consists of moulded balls and sticks of different colours and size arranged in different size lugs.
- The set is very helpful in modelling different compounds with the help of given keycard.
- Box size : 51 x 39 x 7 cm.



NEW

CM101 Diamond Crystal Model

- Price Rs. 1770.00 (A)
- Size 24x18x13 cm
- Made of plastic.
- In transparent acrylic box.



NEW

CM102 Graphite Crystal Model

- Price Rs. 1770.00 (A)
- Size 21x15x10 cm
- Made of plastic.
- In transparent acrylic box.



Age 8+

TK4003 Wake Me Robot

- Price Rs. 2773.00 (A)
- Place it next to your bed at night.
- In the morning when light falls on it, the robot will start to move and buzz.
- Easy to assemble - no soldering required.



Age 10+

TK8360 Super Chem 150

- Price Rs. 4838.00 (A)
- 150 exciting science activities using common products.
- Over 40 pieces of equipment are there.
- Activities include phenomena of: chemistry, optics, bubbles, magnetism, physics and chromatography.
- The kit includes an attractive four colour book.



Age 10+

TK8405 Solar Power

- Price Rs. 4956.00 (A)
- 150 Challenging Experiments.
- Build a solar electric generator, motor, water heater, furnace, thermometer, crane and solar energy mobiles.
- Unique experiments with colour optics, electroplating, stroboscopes, thermodynamics and Moire patterns.



Age 10+

TK8650 Ecology

- Price Rs. 4779.00 (A)
- 150 Experiments dealing with ecology.
- Topics include bacteriology, climate, water, air, nature, chemical analysis, water and soil pollution, recycling and acid rain.
- Understand the problems & improve the environment.



Age 8+

TK8740 Hydrolab

- Price Rs. 5310.00 (A)
- Complete greenhouse system for cultivating plants and vegetables in an "indoor" environment, without soil, using a modern Hydroponics system.
- Kit comes with a base, fertilizer tank, adjustable translucent observation cover, 4 growing trays, safe chemicals & bedding for propagating growth of plants.



Age 10+

TK8950 Energy

- Price Rs. 5546.00 (A)
- More than 200 experiments.
- Kit gives an understanding of the various kinds of energy sources, how to transform them and use them.
- Learn about windmills, levers, solar energy, batteries, electricity, electrochemistry and more.
- Make your own simple machines.

COMMUNITY HEALTH MODELS

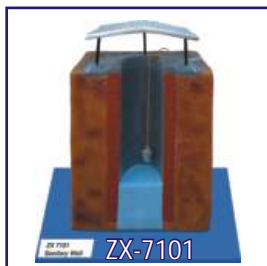
- Made of high grade materials having long durability
- Mounted on sturdy wooden frame for easy display
- Supplied with well illustrated informative literature

- Well labeled parts
- Beautifully painted in bright colors
- Model is a great teaching tool for nursing students

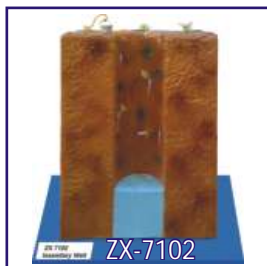
COMMUNITY HYGIENE

ZX-7101 - Sanitary WellPrice Rs. 6490.00 (A)
 ZX-7102 - Insanitary WellPrice Rs. 6490.00 (A)
 ZX-7103 - Deep and Shallow WellPrice Rs. 6490.00 (A)
 ZX-7104 - Deep Tube WellPrice Rs. 7670.00 (A)

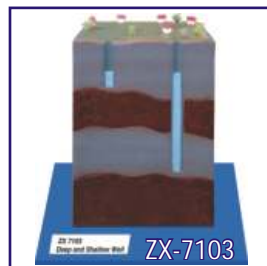
ZX-7105 - Step WellPrice Rs. 7670.00 (A)
 ZX-7106 - Berkefeld FilterPrice Rs. 6490.00 (A)
 ZX-7107 - Slow Sand FilterPrice Rs. 8260.00 (A)
 ZX-7108 - Rapid Sand FilterPrice Rs. 7080.00 (A)



ZX-7101



ZX-7102



ZX-7103



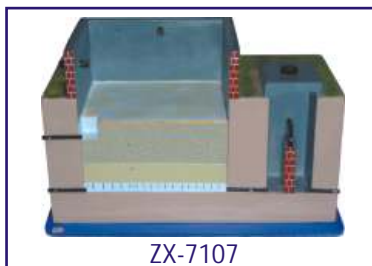
ZX-7104



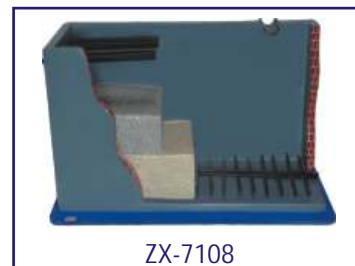
ZX-7105



ZX-7106



ZX-7107



ZX-7108

ENVIRONMENTAL SANITATION

ZX-7201 - House Drainage System.....Price Rs. 8260.00 (A)
 ZX-7202 - Chamber Type Incinerator.....Price Rs. 8260.00 (A)
 ZX-7203 - Activated Sludge Process.....Price Rs. 8260.00 (A)
 ZX-7204 - Bore Hole LatrinePrice Rs. 6490.00 (A)
 ZX-7205 - Dug Well Latrine (Pit Latrine) ...Price Rs. 6490.00 (A)

ZX-7206 - Trench LatrinePrice Rs. 7080.00 (A)
 ZX-7207 - Septic Tank LatrinePrice Rs. 7670.00 (A)
 ZX-7208 - Biogas PlantPrice Rs. 8260.00 (A)
 ZX-7209 - Smokeless Chulha.....Price Rs. 7670.00 (A)



ZX-7201



ZX-7202



ZX-7203



ZX-7204



ZX-7205



ZX-7206



ZX-7207



ZX-7208



ZX-7209

SCIENCE WORKING MODEL

PHYSICS



PH 1014 S
Working of Switch - DIY
Price Rs. 473.00 (A)



PH 1036 C Conductor and
Insulator - DIY
Price Rs. 499.00 (A)



PH 1013 S Mag. Spring /
Repulsion of Magnets -DIY
Price Rs. 189.00 (A)



PH 1034 T Make Your
Own Sundial - DIY
Price Rs. 579.00 (A)



PH 1003 S
Levitation of Pencil - DIY
Price Rs. 347.00 (A)



PH 1042 C
Yarn Spindle - DIY
Price Rs. 220.00 (A)



PH 1043 S Fibre to Fabric - DIY
Price Rs. 758.00 (A)



PH 1008 S
Working of LED - DIY
Price Rs. 132.00 (A)



PH 1019 S Uses of
Pulley In Our Life - DIY
Price Rs. 420.00 (A)



PH 1007 S
Day and Night - DIY Kit
Price Rs. 569.00 (A)



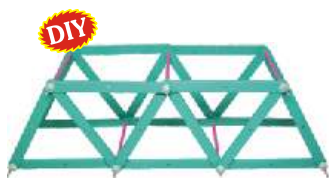
PH 1025 S Infinite Images
(Parallel Mirrors)- DIY
Price Rs. 262.00 (A)



PH 1044 S Make Your
Own Compass - DIY
Price Rs. 210.00 (A)



PH 1045 C Multi Circuit
Panel Board - DIY
Price Rs. 2,182.00 (A)



PH 1046 C Make Your
Own Bridge - DIY
Price Rs. 305.00 (A)



PH 1021 T Bernoulli Bag
(Capacity of Lungs) - DIY
Price Rs. 125.00 (A)



PH 1086 S
Elastic Powered Boat - DIY
Price Rs. 262.00 (A)



PH 1047 C Electricity and
Magnetism Kit - DIY
Price Rs. 1,897.00 (A)



PH 1048 S Electromagnet
Making Kit
Price Rs. 473.00 (A)



PH 1049 S Electromagnetic
Repulsion - DIY
Price Rs. 568.00 (A)



PH 1016 C Mixing of Col.
& White Light Formation
Price Rs. 639.00 (A)



PH 1018 C
Ray Box (Lenses Kit)
Price Rs. 1,529.00 (A)



PH 1050 C
Anemometer - DIY
Price Rs. 347.00 (A)



PH 1015 S
Reflection of Light Kit - DIY
Price Rs. 378.00 (A)



PH 1051 T
Mag. Levitation
& Maglev Train - DIY
Price Rs. 719.00 (A)



PH 1052 T Working
Model of Tornado - DIY
Price Rs. 1,584.00 (A)



PH 1053 S Kaleidoscope
Making Kit - DIY
Price Rs. 210.00 (A)



PH 1037 T
Conduction Of Heat - DIY
Price Rs. 218.00 (A)



PH 1005 S Frictionless
Propeller Kit - DIY
Price Rs. 305.00 (A)



PH 1054 S Wind Powered
Crane - DIY
Price Rs. 125.00 (A)



PH 1010 S
Airfoil Designs
& Shapes - DIY
Price Rs. 136.00 (A)



PH 1024 S Calculate. no.
of Reflection-DIY
Price Rs. 178.00 (A)



PH 1017 S Centrifugal
Force in The Earth Kit - DIY
Price Rs. 329.00 (A)



PH 1029 S Air Pressure &
Atomic Pressure - DIY
Price Rs. 52.00 (A)



PH 1033 T Static
Electricity Kit - DIY
Price Rs. 99.00 (A)



PH 1055 C Hydraulic Arm - DIY
(without bottle)
Price Rs. 438.00 (A)



PH 1039 T RGB DIY Kit
Price Rs. 796.00 (A)



PH 1056 S
Air Powered Car - DIY
Price Rs. 589.00 (A)



PH 1030 S Wind Mill
DIY Kit (Air Pressure)
Price Rs. 420.00 (A)



PH 1011 T
Density of Material Kit
Price Rs. 399.00 (A)



PH 1012 S Sprinkler - DIY
Price Rs. 94.00 (A)



PH 1057 T
Lever And Fulcrum Fn. Kit - DIY
Price Rs. 2,799.00 (A)



PH 1022 S Properties of
Air Kit - DIY
Price Rs. 94.00 (A)



PH 1020 S
Working of Rope Way - DIY
Price Rs. 347.00 (A)



PH 1058 S
Electric Propeller Boat - DIY
Price Rs. 473.00 (A)



PH 1006 S Working Model of Gyroscope
Price Rs. 473.00 (A)



PH 1031 S
Balloon Car - DIY
Price Rs. 178.00 (A)



PH 1059 T
Twin Pendulum - DIY
Price Rs. 1,423.00 (A)



PH 1060 T Up Hill Cone (Small) - DIY
Price Rs. 329.00 (A)



PH 1061 C Motion Car
Price Rs. 799.00 (A)



PH 1062 T Working Model of Trebuchet - DIY
Price Rs. 420.00 (A)



PH 1063 C Sound and Vibration Kit - DIY
Price Rs. 178.00 (A)



PH 1001 S
Magnetic Gun - DIY
Price Rs. 568.00 (A)



PH 1027 S Buoyancy & Archimedes Principle - DIY
Price Rs. 505.00 (A)



PH 1004 T
Maxwell's Wheel
Price Rs. 1,195.00 (A)



PH 1040 T
Heating Effect From Electricity - DIY
Price Rs. 258.00 (A)



PH 1064 C
Series Connection - DIY
Price Rs. 473.00 (A)



PH 1069 T Total Internal Reflection Kit - DIY
Price Rs. 258.00 (A)



PH 1070 T
Tesla Coil
Price Rs. 540.00 (A)



PH 1074 C
Syringe Generator
Price Rs. 283.00 (A)



PH 1071 S
Toy Telescope
Price Rs. 68.00 (A)

Similar to above, following DIY kits are also available:

PH 1065 C Resistance In Series and Parallel
Price Rs. 473.00 (A)

PH 1066 C Working of A Resistance
Price Rs. 634.00 (A)

PH 1067 C Variable Resistance Graphite
Price Rs. 634.00 (A)

PH 1068 C Magnetism From Electricity
Price Rs. 634.00 (A)

PH 1076 C Parallel Connection
Price Rs. 568.00 (A)

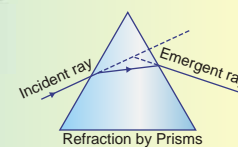
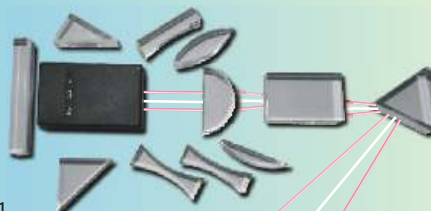
LIGHT AND OPTICS CLASS DEMO KIT Magnetic Featured Ray Box And Blocks

This light and optics kit is a very handy tool for science teachers. It demonstrates the laws of reflection and refraction. **Product Code: PH 1092 C Price Rs. 2,705.00 (A)**

The kit consist of:

- Ray box-1
- Convex lenses-4
- Concave lenses-3
- Slab-1
- Prisms-3
- Rectangular light block-1

The ray box can project 3 beam of light in 2 colours
Supplied with teacher's support guide





PH 1072 T
Hand Generator
with Pulley - DIY
Price Rs. 568.00 (A)



PH 1087 C
Pulley System - DIY
Price Rs. 506.00 (A)



PH 1075 T
Solinoid Engine
Price Rs. 2,058.00 (A)



PH 1077 C
Solar Reading Lamp
Price Rs. 1,043.00 (A)



PH 1041 T Electric
Motor Kit - DIY
Price Rs. 397.00 (A)



PH 1028 S Potential Energy
In Twisted Elastic- DIY
Price Rs. 262.00 (A)



PH 1078 T
Catapult - DIY
Price Rs. 705.00 (A)



PH 1002 T
Hydraulic Jack
Price Rs. 2,058.00 (A)



PH 1081 T
Eddy Current in
An Aluminium Tube
Price Rs. 1,584.00 (A)



PH 1079 T
Hydraulic Arm Lift
Price Rs. 1,423.00 (A)



PH 1080 S
Screw Jack - DIY
Price Rs. 589.00 (A)



PH 1035 T
Capillary Action - DIY
Price Rs. 199.00 (A)



PH 1082 T
Magnetic Brake
Price Rs. 1,755.00 (A)



PH 1083 T Magnetic
Induction Pendulum
Price Rs. 1,043.00 (A)



PH 1084 T
Charkha Generator
Price Rs. 3,169.00 (A)



PH 1023 S Newton's III Law
(Amphibian Car) - DIY
Price Rs. 634.00 (A)



PH 1088 T
Fidget Generator
Price Rs. 1,584.00 (A)



PH 1089 C
Magic RGB Cubes - DIY
Price Rs. 986.00 (A)



PH 1090 C
Gear Driven Generator
Price Rs. 1,517.00 (A)

FUN SCIENCE KITS



FN 15002 S
Slime Kit - DIY
Price Rs. 505.00 (A)



FN 15003 S
Soap Making Kit - DIY
Price Rs. 758.00 (A)



FN 15001 S
Snow Making Kit - DIY
Price Rs. 420.00 (A)



FN 15004 S
Magic Sand - DIY
Price Rs. 452.00 (A)



FN 15005 S
Bike on Rope - DIY
Price Rs. 368.00 (A)

CHEMISTRY



CH 110 T
Chromatography - DIY
Price Rs. 157.00 (A)



CH 103 S Fats, Protein & Carbohydrates Testing Kit - DIY
Price Rs. 502.00 (A)



CH 114 S
Budding Crystal Kit - DIY
Price Rs. 94.00 (A)



CH 109 S
What Is Litmus & Indicator - DIY
Price Rs. 559.00 (A)



CH 107 S
What Is pH Scale - DIY
Price Rs. 258.00 (A)



CH 111 S
Chemical Reaction
Price Rs. 131.00 (A)



CH 115 C Lemon Battery - DIY (without multimeter)
Price Rs. 220.00 (A)



CH 116 C
Inflate Balloon - DIY
Price Rs. 178.00 (A)



CH 112 C
Water Filter Kit - DIY
Price Rs. 600.00 (A)



CH 113 T
Electroplating - DIY
Price Rs. 407.00 (A)



CH 117 S
Fireproof Balloons - DIY
Price Rs. 305.00 (A)



CH 118 T Chemical Reac. (Elephant Toothpaste)-DIY (without bottle)
Price Rs. 220.00 (A)



CH 101 S
Density of Liquids Kit - DIY
Price Rs. 136.00 (A)



CH 102 S Miscible and Immiscible Liquids Kit - DIY
Price Rs. 136.00 (A)



CH 119 S
Rapid Oxidation Kit - DIY
Price Rs. 262.00 (A)



CH 105 S
Properties of Carbon Dioxide - DIY
Price Rs. 94.00 (A)



CH 120 T
Solutions, Suspensions & Colloids - DIY
Price Rs. 399.00 (A)



CH 106 S
What Are Common Acid & Bases - DIY
Price Rs. 262.00 (A)



CH 108 S Acid Base Reaction CO₂ - DIY
Price Rs. 329.00 (A)



CH 104 S Acid Bases & Their Properties - DIY
Price Rs. 283.00 (A)



CH 121 C Prod. of Hydrogen & Oxygen - DIY
Price Rs. 454.00 (A)

3 DIMENSIONAL INTERACTIVE PERIODIC TABLE

Product Code: CH 122 C Price Rs. 12622.00 (A)

- Wall mountable
- Detachable element cubes
- 118 Cue cards for teachers
- Colour codes depict the state of elements.
- Below characteristics are depicted on each side of cube:-
 - Element symbol
 - Atomic number
 - Element name
 - Electron structure
 - Atomic weight
 - Electronegativity



- Real life co-relation of elements
- Teacher's hand book
- Size: 103x65 cm



BIOLOGY



BG 10001 T
Body Movements DIY Kit
Price Rs. 1,200.00 (A)



BG 10004 S
Study of Seed Germination - DIY
Price Rs. 220.00 (A)



BG 10003 C Types of Food We Eat - DIY
Price Rs. 273.00 (A)



BG 10002 T Resp. Sys. In Human Being - DIY
Price Rs. 420.00 (A)

ROBOTICS



RT 20001 C
Robo Air Car - DIY
Price Rs. 1,423.00 (A)



RT 20003 C
Gear Motor Car - DIY
Price Rs. 1,783.00 (A)



RT 20004 C
Fluid Turbine - DIY
Price Rs. 1,423.00 (A)



RT 20005 C Wind Mill - DIY
Price Rs. 511.00 (A)



RT 20006 C Robo Car - DIY
Price Rs. 1,660.00 (A)



RT 20007 C
Robo Conveyor Machine - DIY
Price Rs. 1,897.00 (A)



RT 20008 C Solar Car - DIY
Price Rs. 1,517.00 (A)



RT 20009 C Industrial Lift Gear Model - DIY
Price Rs. 1,660.00 (A)



RT 20010 C
Tank With Robotic Arm
Price Rs. 10,439.00 (A)

VISUAL TEACHING AIDS

OPTIONAL ACCESSORIES

- OA01 Projection Screen 70"×52" (175 × 130 cms) with folding tripod stand..... Each Rs. 5133.00 (A)
- OA02 Projection Screen 60"×60" (150×150 cms) with folding tripod stand..... Each Rs. 5133.00 (A)
- OA03 Projection Screen 90"×72" (225×180 cms) with folding tripod stand..... Each Rs. 10620.00 (A)
- OA04 Map Screen made of thick white rexine with roller 175×130 cms..... Each Rs. 2596.00 (A)
- OA12 Blank Overhead Projector Transparencies - 210×297 mm. Packet of 100 sheets Per Pkt Rs. 708.00 (A)

OVERHEAD PROJECTOR TRANSPARENCIES

- Price per transparencies Rs. 70.80 (A)
- Available in set only

- | | |
|------------------------|---------------------------------|
| OT01 Botany set of 75 | OT09 Chemistry set of 40 |
| OT02 Zoology set of 75 | OT10 Human Physiology set of 50 |
| OT08 Physics set of 50 | OT13 First Aid set of 50 |



2"×2" COLOURED 35 mm SLIDES HEALTH SECTION

- Price per slide Rs. 26.50 (A)
- Available in set only

HEALTH CARE

each set contain 20 slides

- SHC01 Health Rules
- SHC02 Causes of Diseases
- SHC03 Prevention of Diseases
- SHC04 Effects of Alcohol

- SHC05 Tobacco & Habit Forming Drugs
- SHC06 Clean Body
- SHC07 Clean Water
- SHC08 Constituents of Food
- SHC10 Immunization

OTHERS

- SH01 Human Physiology set of 50
- SH03 Yogasan set of 20
- SH07 First Aid set of 50
- SH09 Mothercraft set of 30
- SH13 Community cleanliness set of 8

ZOOLOGY SECTION

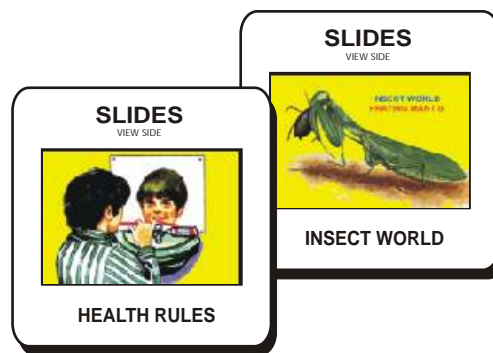
- Price per slide Rs. 26.50 (A)
- Available in set only

- SZ03 Amoeba & Paramecium set of 20
- SZ05 Animal Kingdom set of 30
- SZ07 Beaks & Feet of Birds set of 20
- SZ10 Earthworm set of 20
- SZ11 Chick Embryology set of 20
- SZ12 Frog Embryology set of 15
- SZ13 Rabbit Embryology set of 20
- SZ14 Evidence of Evolution set of 20
- SZ19 L.H. Butterfly set of 10
- SZ21 L.H. Housefly set of 10
- SZ22 L.H. Mosquito set of 10
- SZ23 L.H. Silkworm set of 10
- SZ26 Meiosis set of 15
- SZ28 Mitosis set of 10
- SZ29 Prehistoric Animals set of 20
- SZ32 Snakes set of 20

BOTANY SECTION

- Price per slide Rs. 26.50 (A)
- Available in set only

- SB03 Bacteria set of 20
- SB06 Dispersal of Seeds set of 20
- SB09 Germination of Seeds set of 20
- SB16 Meiosis set of 15
- SB17 Mitosis set of 10
- SB20 Plant Kingdom set of 30
- SB22 Pollination set of 10
- SB23 Roots set of 20
- SB25 Stems set of 20
- SB27 Water Plants set of 10
- SB28 Botany set of 30



SPECIAL SLIDES

- | | |
|---|-----------------|
| SSS04 Histology set of 100 | Rs. 3186.00 (A) |
| SSS05 Pathology set of 100 | Rs. 3186.00 (A) |
| SSS06 Chemistry Album for 10+2 set of 100 | Rs. 3186.00 (A) |
| SSS07 Physics Album for 10+2 set of 100 | Rs. 3186.00 (A) |
| SSS09 Human Physiology set of 100 | Rs. 3186.00 (A) |

BIO VIEWERS

- BV01 Slide viewer for Viewing Slides in available light Rs. 767.00 (A)
- Biostrips are available on various subjects. Biostrips can be prepared on any subject (Minimum quantity 50 each title).

INDIAN SCHOOL SYLLABUS ON VIDEO

From Hazel Dolbrien of the U.K. Any one CD Rs. 354.00 (A)

BIOLOGY			PHYSICS		
Code	Title	Time (in mins.)	Code	Title	Time (in mins.)
E01	Sleepy Heads, Amoeba, Protista.	41	E22	Light, Measurement of Acceleration of Gravity, Very Low Temperature, Reflection, Refraction & Polarisation of Light.	53
E02	How Insects Develop Part -I & II, Life of the Forest.	49	E23	Photoelectric Effect, prelude to Power, Refraction, Reflection & Scattering of Light	51
E03	What are Cells, Role of the Cell Membrane, Peripheral Nervous System.	57	E24	Dioxide Characteristics, Power, heat as a Radiant Energy.	42
E04	The Woods, Woodlands: Plant Movements, What is Autumn, What is Spring.	52	E25	Buoyancy, Vibrations, learning about Sound.	51
E05	About Your Body, Tissues of the Human Body, Body Fights Diseases.	43	E26	Magnetism part-I, II & III.	49
E06	How Seeds are Scattered, Dispersal of Seeds and Fruits, How Seeds Grow.	52	E27	Friction, Colour from light, magnetism, Magnets & their uses.	40
E07	Life Cycle of Insects Part -I & Part - II, life story of the Earthworm, food feeding habits.	47	E28	Conquest of the atom, X-Ray Diffraction, Principles of Nuclear Fission.	55
E08	Process of Pollination, Germination & Growth of plants, Life Cycle of Flowering Plants, Animals Breathe in many ways.	54	E29	Electricity (Fundamentals), pressure & Current, Electrical sources.	55
E09	Meiosis, Mitosis, Circulatory System.	51	E30	Introducing the Oscilloscope, Electromagnetic Waves, Isotopes.	53
E10	Temperature Regulation, Chemistry of The Cell Part - I & Part II.	52	E31	Electromagnetic Waves Part-I & Part -II.	42
E11	Effect of Light on Oxygen Production, effect of Chlorophyll & Carbon Dioxide on Oxygen production & Starch Formation, Plants Make Food, Photosynthesis.	56	E32	Waves & Vibrations, Young & the Theory of Light, Principles of T.V.	54
E12	Circulation of the Heart, Respiratory, Reproductive & Nervous System.	50	E33	Velocity of Gamma Rays, Learning About Heat, Discovery of Radioactivity.	46
E13	Liver, Digestive System Part-I & Part -II, Lymphatic System.	54	E61	Steam & Steam Generation Time Measurement & Meaning.	51
E14	Tissue Respiration, How Plants Move, Coral Reef Community.	51	E62	Energy From the Sun, How it works.	41
E43	Growing Plants, Fungi & man, Fungi.	47	E63	Actions & reaction, Rotational Dynamics.	34
E48	Insects, Roots & Plants that help us.	44	E64	Fuels for the Future, How Machines help us.	47
E49	Genetic Investigation, Genetics & Plant Breeding, Pattern Developments.	43	E65	Rockets, Doppler Effect, Wave Particle Quality, Newtons II Law.	53
E50	Autumn Brings Changes, Spring Brings Changes, Flying Birds.	44	CHEMISTRY		
E51	Parasites, Microbiology: Microbes & their Control, Diffusion & Osmosis, Structure of Protein.	54	<i>Code</i>	<i>Title</i>	<i>Time (in mins.)</i>
E52	Autonomic Nervous System & Drugs.	35	E34	Atoms & Molecules (Properties of matter), Chromatography, Combustion.	47
E53	Life Cycle of a Frog, Skeleton, Skin as a Sense Organ, Egg & Sperm.	50	E35	Acids, Bases & Salts, Physics & Chemistry of Water.	41
E54	Sense Perception Part-I & Part-II	55	E36	What is Soap?, Sodium Family, Nitric Acid Compounds & Nitrogen Cycle.	48
E55	Introduction to Dissection, Work of Kidneys	42	E37	O for Oxygen, Strange case of Liquid Oxygen	44
E103	Human Brain Part-I: The Self	50	E38	Atomic Model & The Periodic Table.	44
E104	Human Brain Part-II: Language	50	E66	Crystallisation, Distillation.	49
E105	Human Brain Part-III: Fear	50	E67	Properties of Matter I & II.	46
E106	Human Brain Part-IV: Memory	50	E68	Properties of Matter III, IV & V.	55
E107	Human Brain Part-V: Seeing	50	E69	Basic Laboratory Techniques I.	54
E108	Human Brain Part-VI: Madness	50	E70	Basic Laboratory Techniques II.	60
			E71	Basic Laboratory Techniques III.	45
			E72	Preparation of Oxygen: Demonstration, Development of Electrochemistry, ABC of ⁺ NPK, Facts about Fertiliser.	52
			E73	Vanadium: A Transistor Element, metals & Non- metals, Silicon & its Compounds.	
				Diamonds a Metal working	57
			E94	Rutherford Model of An Atom	42

ATTENTION PLEASE!!

Now we can supply Large Format Charts and Maps in any quantity upto 60" width. The large format charts and maps are printed using latest Digital technology. The details are as below:

1. **Material:** Printed on Non-tearable Synthetic paper 125 micron thick - to give extra life to the product.
2. **Maximum Size:** One side less than or equal to 150 cm - makes viewing comfortable from a distance.
3. **Design:** You can select any design from our catalogue - flexibility of choice.
4. **MOQ:** No minimum order quantity. As the quantity increases, the price decreases.
5. **Inks:** Digital printing using Non-toxic inks - safe for students and teachers.
6. **Colour:** Full colour printing - using natural shades.

Kindly feel free to send your inquiries for available sizes and prices.



NEWLY INTRODUCED ITEMS



ZX-3213PN Frog Dissection Model
(Details on Page No. - S-13)



ZX-S130WC Human Skeleton Disarticulated with Intervertebral Discs
(Details on Page No. - S-24)



ZX-1203S Foot Anatomy Model
(Details on Page No. - S-26)



ZX-1449P Lymph Node
(Details on Page No. - S-34)



ZX-1442K Oral Hygiene Training Kit
(Details on Page No. - S-41)



ZX-2103 Plant Cell Model
(Details on Page No. - S-42)



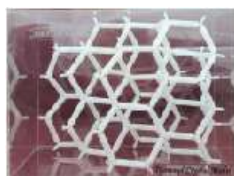
ZX-3105 Mitosis Model
(Details on Page No. - S-43)



ZX-3106 Meiosis Model
(Details on Page No. - S-43)



TELESCOPE (F70076)
(Details on Page No. - S-44)



CM101 Diamond Crystal Model
(Details on Page No. - S-45)



CM102 Graphite Crystal Model
(Details on Page No. - S-45)

OUR SHOWROOM AT DELHI



91 YEARS OF DEDICATED & HONEST SERVICES

N. C. KANSIL & SONS

Head Office : Kansil Bhawan, 8606, Model Basti, New Delhi - 110005

Ph : +91-11-47202020 (30 lines) WhatsApp : +91-9310512020 email : nckmaps@gmail.com

Works : Z-793, Kh. No.- 30/4, Gali No.- 4, Master Mohalla, Sameypur Indl. Area, Libaspur, Delhi- 110042

Branch Office : 5299/1, Grain Market, Cross Road No. 4, Ambala Cantt - 133001

Web : www.nck-maps.com, www.nckansil.com

MSME Regn. No.: UDYAM-DL-06-0010938 GSTIN: 07AAAFN3555B1ZP IEC: 0599055103

READY STOCKS – BEST QUALITY – COMPETITIVE RATES

