

DUROTUFF™ PRODUCT PORTFOLIO





ABOUT US

POWER CHEM PLAST LTD. is into chemical business since last 25 years. The company has set up state of the art manufacturing facilities in its manufacturing set up to Roofing Products under the brand name DUROTUFF™ Process and quality raw materials ensure uniform thickness, excellent, optimum strength and long life of product.

POWER CHEM PLAST LTD. is An ISO 9001:2015 Certified Leading Manufacturer of DUROTUFF™ Brand Roofing, Cladding Products. At Baddi (H.P). INDIA

Our Products and it's Annual Production Capacity.

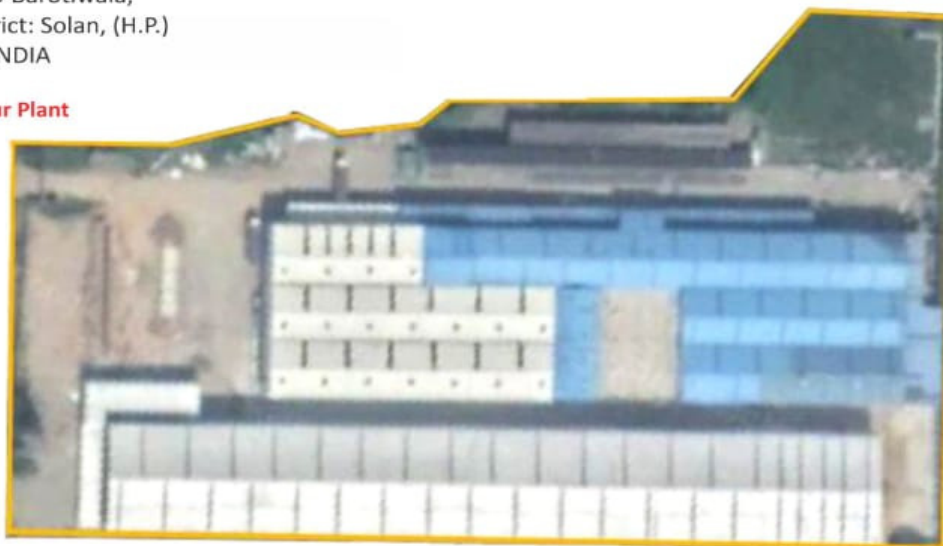
Sr. Nos.	DUROTUFF™ Products	Production Capacity Per Annum
1.	Solid 2UV Polycarbonate sheet (2 Plant)	5000 Tons
2.	Multiwall 2UV Polycarbonate sheet	2400 Tons
3.	Online Co-Extruded 2UV Corrugated polycarbonate Roofing Sheet	2000 Tons
4.	Multicell 2UV Roof Panel	2000 Tons
5.	Polycarbonate Turbo Ventilator base Plate	150000 Set
6.	Wind Driven Turbo-Ventilator	150000 Set
7.	Spanish Style ASA-uPVC Roof Tile	2400 Tons
8.	uPVC Corrugated Roofing Sheet	2400 Tons
9.	Polycarbonate Riot-Shield	250000 Set
10.	Polycarbonate Pipes/Tube, Lathi / Baton	1200 Tons
11.	Advance Polymer Coated Steel Sheet/Coil (APC Steel)	36000 Tons
12.	Magnetic PVC Curtain	2000 Tons

Our Plant Location :

POWER CHEM PLAST LTD

Village Kunjhal, PO Barotiwala,
Tehsil: Baddi, District: Solan, (H.P.)
Pincode 174103, INDIA

Satellite View of Our Plant



DUROTUFF™ Solid 2UV Polycarbonate sheets

DUROTUFF™ Solid 2UV Compact and Embossed sheets are the ideal solution in fields of application where impact resistance and excellent light transmission are primary requirements: glazing, parapets, canopies, skylights, curved roofing systems, signage in general, neon signs, road signs, noise barriers. Durotuff Solid 2UV Compact and Embossed sheets come in thicknesses ranging from 1.20mm to 12.00mm, in a choice of Transparent, translucent and opaque colours.

Benefits :

- Lightweight
- Excellent impact resistance
- Excellent light transmission
- Good fire performance
- Guaranteed certified quality
- UV protection
- Extremely versatile to use



in addition to retaining exceptional chemical and physical stability.

Applications :

Skylights, Glazing, Opening frames, External partitions, Noise barriers, Safety glazing, Parapets, Canopies.

Available Thickness , Surface, Size and Colour.

Thickness	Surface	Width	Length	Colour
1.20mm	Compact Embossed	1220 mm	2440 mm 15.25Mtr 30.5 Mtr Customized	Clear
1.30mm		1525 mm		Brown
1.50mm		1830 mm		Blue
1.80mm		2050 mm		Green
2.00mm				Turquoise
3.00mm	Compact	1220mm		IR-Green
4.0mm	Embossed	2050mm		Opal White
5.0mm To 12.0mm	Compact	1220mm 2050mm	2440 mm	Diffuser

UV Protection DUROTUFF™ Solid 2UV protection on both sides

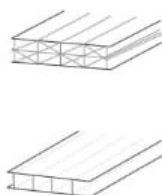
DUROTUFF™ Solid 2UV sheets are monolithic polycarbonate sheets with Both side UV protection. They are used in all applications where the sheet is exposed to the harmful effects of direct sunlight. The co-extruded protection on both surfaces means cutting is optimized, the possibility of incorrect assembly is reduced to a minimum and lasting stability is ensured when it comes to both optical and mechanical properties. This product's features make it unique in delivering superior performance in terms of: transparency, impact resistance, mechanical strength, machinability and adaptability to a wide range of solutions

DUROTUFF™ Multiwall 2UV Polycarbonate sheets

DUROTUFF™ Multiwall sheets are a product of the most advanced manufacturing techniques. Their multiwall structure allows them to meet the most exacting application performance demands. Available in thicknesses ranging from 4 mm to 20 mm with a Two different structures, DUROTUFF™ Multiwall sheets are at the cutting edge when it comes to efficiency, energy savings and optical and mechanical properties.

Benefits :

- Lightweight
- High thermal insulation
- Excellent impact resistance
- Good light transmission
- Good fire performance
- Guaranteed and certified quality
- UV protection



Applications :

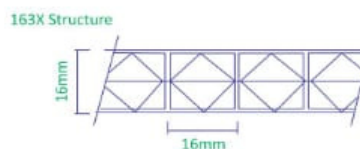
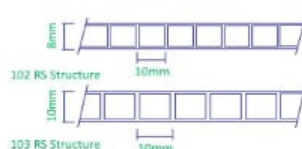
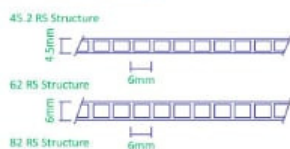
Skylights, Glazing, Opening frames, External partitions, Noise barriers, Parapets, Canopies.

Thickness	Width	Length	Wall Structure	Colour
4.0 mm	1220 mm 2100 mm	11.8 Mtr	2 Wall	Clear
6.0 mm		5.9 Mtr		Brown
8.0 mm		1220mm		Blue
10.0 mm		2050mm		Green
16.0 mm				Turquoise
20.0 mm			3X 3 Wall X-Structure	IR-Green
				Opal White
				Yellow
				Red
				Difuser

DUROTUFF™ Multiwall 2UV protection on both sides

DUROTUFF™ Multiwall 2UV Sheets protected from the effects of UV rays on both sides. Particularly suitable for applications where they may be exposed to direct and/or indirect solar radiation on both sides.

Wall Structure



DUROTUFF™ Online Co-Extruded UV Corrugated Roofing Sheet

Overview DUROTUFF™ Online Co-Extruded UV Corrugated contribute to the conservation of energy and improve the quality of the working environment. They stand up to demanding exterior usage and offer multiple advantages over alternatives. DUROTUFF™ Online Co-Extruded UV Corrugated are designed for use as in-plane Online Co-Extruded UV Corrugated and sidelights with corrugated metal roofs. Advanced profile matching technology enables integration with virtually any metal profile. DUROTUFF™ panels form a complete shield against harmful UV rays while admitting most of the visible light. Clear panels allow maximum light in, while a range of colors and diffusions offer various solar transmission options and reduced heat loads.

Main Benefits :

- Virtually unbreakable
- Flexible matching to metal profiles
- High corrugation crests - over 100mm
- Maintains high light transmission far better than alternative materials
- Wide service temperature range
- (-50°C to 100°C)
- Easily and safely installed
- 10 year warranty
- Hail and wind resistant
- Filters over 99% of UV radiation
- Self extinguishing

Typical Applications :

- Online Co-Extruded UV Corrugated for metal roofs
- Sidelights for metal roofs
- Ridge lighting for metal roofs

Profile Availability DUROTUFF™ is available in over 12 standard and special profiles. DUROTUFF™ can also be easily matched to any metal profile using an advanced Metal Profile matching technology. For more information please contact your DUROTUFF™ distributor. An up-to-date profile catalog is available for downloaded from our website www.durotuff.com.

Typical Physical Properties :

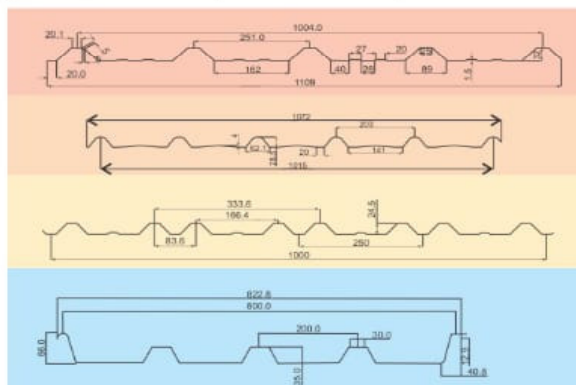
Property	ASTM Method	Units	Value
Density	D 792	g/cm2	1.2
Heat Deflection Temperature (HDT) (Load 1.82 MPa)	D 648	;C	135
Service Temperature (Long Term)		;C	-50 to 100
Coefficient Linear thermal expansion	D 696	Cm/m ;C	0.065
Thermal Conductivity	C 177	W/m K	0.21
Tensile strength at yield	D 638	MPa	62
Tensile strength at break	D 638	MPa	65
Elongation at yield	D 638	%	6
Elongation at break	D 638	%	>70
Flexural Strength Mechanical	D 790	MPa	93
Rockwell Hardness	D 785	R Scale	118
Light transmission	D 1003	%	>80
Yellowness Index	D 1003	Y1	<1
Flammability Rating	EN 13501		B, S1, d0

UV Blocking and Resistance

DUROTUFF™ transmits radiation selectively and completely shield against harmful UV (ultraviolet) rays. DUROTUFF™ itself withstands the detrimental effects of UV radiation, as specified in the DUROTUFF™ warranty

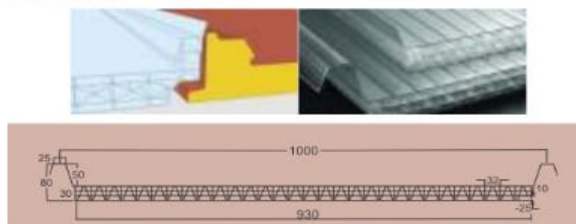
Advantage of Online Co-Extruded Profile V/s. Cold Bending Profile

Particular	Online Coextruded Profile	Cold Banding Profile
Dimension Stability	Excellent	Poor
Toughness		
Profile Matching	99%	80%
Edge Radius	Possible as per Profile Design	Not Possible
Arc on crest		
Small (Baby) Rib		
Anti Capillary Groove		



DUROROOFTM 5M-30mm for Sandwich Panel Roof

The **DUROROF™ 5M-30mm** panel is designed to facilitate the installation of single skylights coupled with the most common sandwich panels. The main features are: the system can fit to most common sandwich panels with variable thickness, the good thermal insulation and light transmission, the possibility to create skylights on long sloping roofs (please consider the necessary expansion spaces), the good load resistance, the 10-year warranty against hail, yellowing and loss of light transmission.



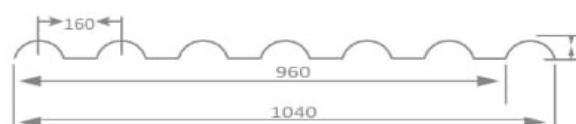
Durotuff Spanish Style ASA-uPVC Roof Tile

PRODUCT INFORMATION

ASA coated Durotuff™ PVC Roof Tile are manufactured with co-extrusion technology and are special roof coating sheets with 2-layers. As a top layer material ASA anti-climate coating is highly suitable for outdoor usage. ASA coated products preserve their colors and physical qualities for long years even when subject to UV rays, humidity, hot and cold weather conditions (hail, rain, snow, frost, etc.). They perform highly against corrosion. These products have numerous physical and visual advantages when compared to traditional roof covering. Due to its special performance Durotuff™ PVC Roof Tile are suitable for usage in all kinds of applications and detail solutions in the construction sector primarily in both industrial and residential applications.

Product Features :

- Heat & Sound Insulation
- Light Weight
- Cost effective & Non-Carcinogenic
- Environmental protection & energy conservation
- Anti-UV performance
- Long term color stability and long service life
- Pressure Prevention
- Corrosion Resistance
- Good Water Resistance
- Good Weather Resistance
- Flame Retardant
- Withstand strong wind and earthquakes



Applications of Spanish Style ASA-UPVC Roof Tile

The Spanish Style ASA-uPVC roof Tile offers an ideal roofing material solution when you are planning to reconstruct your flat roof into pitched roof. Also it is a kind of commonly used building material for sheds, carports, stadiums, villas, holiday villages, mobile homes, prefabricated houses, garden pavilion, as well as many other types of residential and commercial building.

Technical Details :

Thickness	2.5 ±0.1 MM	3.0 ±0.1 MM
Overall Width	1040 MM	1040 MM
Cover (Effective) Width	960 MM	960 Mm
Weight Per M2	4.0 ±1 KG/M2	5.0 ±1 KG/M2

Property	ASTM D Method	Value
Density	792	1.47 gm/cc
Softening temp. at 10 N	1525	90.6 °c
HDT 66 PSI	648	71.9 °c
HDT 264 PSI	-	66.2 °c
Rate of Burning	648	<5 mm
Tensile Strength at break	638	410 Kg/cm2
Elongation at break	638	32%
Oxygen index	2863	38%
Flammability	UI 94	Match with V ^o
Water Absorption	570	0.07%
Purlin Spacing	between 2 purlins	660mm

Note: The above testing results are provided for reference only.

Durotuff uPVC Roofing Sheet :

The uPVC Roofing Sheet have very good Material for all type of industry and substitute for metal roof to avoid Weather corrosion & Chemical corrosion, Durotuff™ uPVC Roofing Sheet is a good option for Food, Pharma & Chemical Industries.

Top Layer: The Material is ultra-weather resin, to block the solar ultra violet and reduce the coefficient of heat conductivity, ensure product durability and resistance to chemical corrosion.

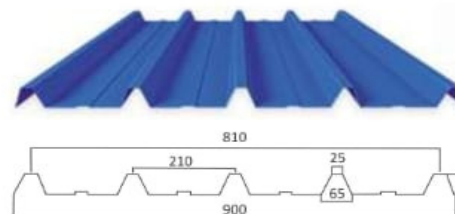
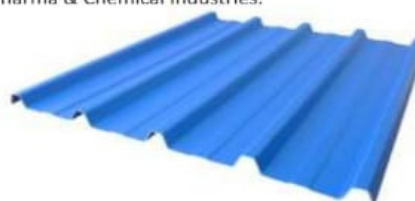
Middle PVC Layer: Contains uPVC compound with carbon fiber giving material high rigidity and improved strength.

Bottom Layer: For just a good material toughness special to ensure the strength at the same time increase the rigidity and light illumination.

Co-Extrusion Machinery to given the product their own features and the organically combined to make a new generation of heat insulation uPVC sheet to solve the product durability, corrosion resistance, a sense of space and aesthetics issues.

Applications :

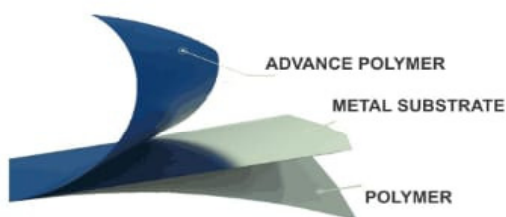
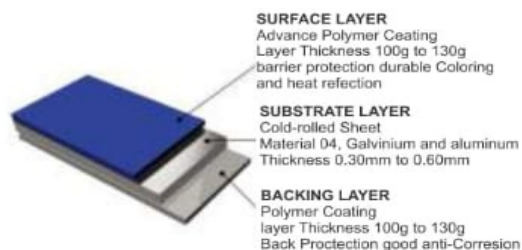
High Grade factory building, Steel Structure Building, Warehouse, Farm Product Market, Market Pathways, Parking Sheds, Farm House, Water Resorts, Animal Houses, Chemical Industries, Poultry Farm, Cattle Farm



APC STEEL SHEET / COIL

APC Steel / COIL invented by coating Advance Polymer Coated on both sides of a metal substrate via an unique “thermal bonding” technology. Advance Polymer Coated on both sides via an unique pressing process at high temperature.

APC STEEL / COIL combines both the advantages of steel and resin, is an innovative material for building systems, providing long service life with high resistance to corrosion, climate and mechanical damage.



The result of this particular combination is a roofing or wall steel sheet, which can be applied in any environmental circumstances, without fear of chemical vapors, be it industrial or agricultural, or the most destructive of saline fog!

APC STEEL VS Pre-painted Color steel

APC STEEL combines the advantages of high-resistance resin with strong steel plate, creating a revolutionary coated steel with MUCH HIGHER corrosion resistance than traditional color coated steels.

Under microscope

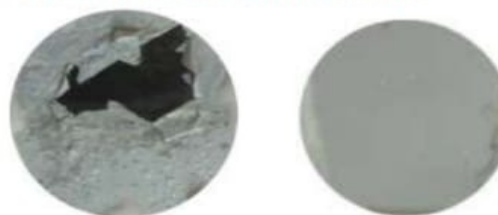


Colour Coated

APC Steel Panel

*It shows that there are many micropore on surface of color coated steel (caused by volatilization). Corrosive will penetrate easily to substrate, which will reduce lifespan of the product. While the surface of APC STEEL is very intact.

After soaked in 20% sulfuric acid for 22 hours



Colour Coated Steel

APC Steel

*APC has no change on surface, while the coating of color coated steel was seriously corroded and peeled off.

APC STEEL is definitely a Revolutionary product, Much More Durable than Prepainted Color Steel !

APC Steel Coil



Layer	Material	Thickness	Application	Colour
Surface	Advance Polymer	100 μ To 130 μ	Exterior	Blue Grey Cream Red White
	Polymer	100 μ To 130 μ	Interior	Blue White
Base	GI Galvanium Aluminum	0.30 mm To 0.60mm	Substrate	Natural

Profiled APC Steel Sheets



Our Products specially Designed as Application

MARINESHIELD & MARINECLAD Specially designed for coastline Area Industries

CHEMISHIELD & CHEMICLAD Specially designed Chemical Industries.

POLYSHINE Specially Designed for General Purpose Regular Industries.

DUROTUFF™ Window Awning & Canopy System

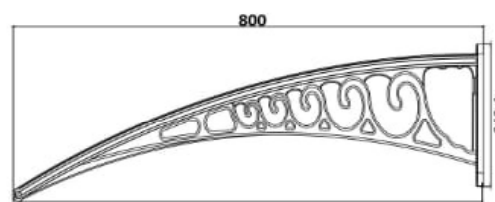
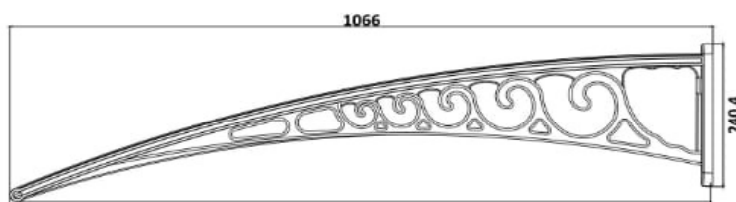
Product Description

We are leading manufacturer and supplier of DUROTUFF™ Polycarbonate Window Canopy. Designed with utmost precision, the offered range is manufactured using high grade polycarbonate and advanced technology. This shed is offered in various designs and sizes, as per specific demands of our customers. Further, our entire range is offer at most reasonable prices to our clients.

Features :

- Perfect design
- Easy installation
- Flawless finish

Available Colour & Size :



DUROTUFF™ Polycarbonate Ventilator Base Plates

We are leading manufacturers of DUROTUFF™ Polycarbonate Sheets, Polycarbonate Corrugated Roofing Sheets,

Polycarbonate Ventilator Base Plates, Polycarbonate Thermoforming Articles, etc. in India. DUROTUFF™ Polycarbonate base plates are used to fix Turbo Ventilators on roofs. We can manufacture these base plates in matching to all roofing profiles. We are the manufacturers who can make these base plates in customized profile for our clients. We have in-house Mould design and mould making facility. So we have served faster in case of customized requirement. Polycarbonate is an excellent replacement for FRP.



Advantage of Polycarbonate Ventilator Base Plate :

- It gives more the life than FRP base Plates. We provide 10 years limited warranty.
- Virtually Unbreakable and Design Freedom.
- UV stabilized & Temperature resistant (-40°C to +120°C). Compared to FRP, PC base plates have minimal thermal expansion and contraction, which prevents cracks in long run.
- Light Transmission – PC Base plate stable Transmits light up to 85% for long time. FRP transmit up to 60% light, and it will be reduced day by day.
- Maintenance free, PC base plate dose not retain Dust it is looking clean and hygienic. FRP has retain Dust and Become dirty after some time.
- Available in 20", 22", and 24" Diameter, Also customized as per Requirement.
- Our expertise in roofing products enables us to design base plates matching with Metal sheet precision, thus eliminating the possibility of leakage.
- Polycarbonate ventilator base plate help in cutting down electricity charges. in today's context, it is a great saving and also contributing towards saving the environment.

Specification & Technical Data sheet of DUROVENT™ Turbo Ventilator

Description	 ALSS-24"	 ALSS-21"	 ALSS-24"	 ALSS-21"
Neck/Throat Dia	24"	21"	24"	21"
Turbine Dia	685 mm ±10mm	590 mm ±10mm	685 mm ±10mm	590 mm ±10mm
Height	360 mm ±10mm	360 mm ±10mm	360 mm ±10mm	360 mm ±10mm
Top Cover (Dish)	24"	21"	24"	21"
Dia	685 mm ±10mm	590 mm ±10mm	685 mm ±10mm	590 mm ±10mm
Thickness	360 mm ±10mm	360 mm ±10mm	360 mm ±10mm	360 mm ±10mm
Fins / Vanes	Aluminum	Aluminum	SS-430 or SS- 304	SS-430 or SS-304
Nos. of Fins	38 Nos. (0.50 mm)	38 Nos. (0.50 mm)	38 Nos. (0.30 mm)	34 Nos. (0.30 mm)
Outer Ring	SS-430 (0.50 mm)	SS-430 (0.50 mm)	SS-430 or 304	SS-430 or SS-304
Inner strips	SS-202	SS-202	SS-202	SS-202
Neck Ring	SS-430	SS-430	SS-430 or 304	SS-430 or 304
Inner Dia	24" (600mm)	21" (530mm)	24" (600mm)	21" (530mm)
Width	100 mm	100 mm	100 mm	100 mm
Thickness	0.50 mm	0.50 mm	0.50 mm	0.50 mm
Inner Arm	SS-202	SS-202	SS-202	SS-202
Width	25.0 mm	25.0 mm	25.0 mm	25.0 mm
Thickness	2.00 mm	2.00 mm	2.00 mm	2.00 mm
Drive Mechanism				
Shaft	SS-202 (12.0mm)	SS-202 (12.0mm)	SS-202 (12.0mm)	SS-202 (12.0mm)
Bush	SS-316	SS-316	SS-316	SS-316
Bearing Cover	Aluminum Alloys	Aluminum Alloys	Aluminum Alloys	Aluminum Alloys
Bearing	6001 2Z (2 Nos)	6001 2Z (2 Nos)	6001 2Z (2 Nos)	6001 2Z (2 Nos)

Description	 SSPP-24"	 SSPP-22"	 Full PP-22"	 PCPP-22"
Neck/Throat Dia	24"	22"	22"	22"
	675 mm ±10mm	620 mm ±10mm	620 mm ±10mm	620 mm ±10mm
	380 mm ±10mm	380 mm ±10mm	380 mm ±10mm	380 mm ±10mm
Top Cover (Dish)	SS-430 or SS-304	SS-430 or SS-304	PP	Polycarbonate
Dia	380mm ±5mm	380mm ±5mm	380mm ±5mm	380mm ±5mm
Thickness	0.50 mm ±0.05mm	0.50 mm ±0.05mm	0.50 mm ±0.05mm	0.50 mm ±0.05mm
Fins / Vanes	SS-430 or SS-304	SS-430 or SS-304	PP (Moulded)	Polycarbonate (Moulded)
Nos. of Fins	(Double fold Design) 24 Nos. (0.30 mm)	(Double fold Design) 28 Nos. (0.30 mm)	(Double fold Design) 24 Nos.	(Double fold Design) 24 Nos. (0.50 mm)
Outer Ring	PP (Moulded)	PP (Moulded)	PP (Moulded)	PP (Moulded)
Inner strips	PP (Moulded)	PP (Moulded)	PP (Moulded)	PP (Moulded)
Neck Ring	PP (Moulded)	PP (Moulded)	PP (Moulded)	PP (Moulded)
Inner Arm	PP (Moulded Fan Type)	PP (Moulded Fan Type)	PP (Moulded Fan Type)	PP (Moulded Fan Type)
Drive Mechanism				
Shaft	SS-202 (12.0mm)	SS-202 (12.0mm)	SS-202 (12.0mm)	SS-202 (12.0mm)
Bearing Cover	PP (Moulded)	PP (Moulded)	PP (Moulded)	PP (Moulded)
Bearing	6001 2Z (2 Nos)	6001 2Z (2 Nos)	6001 2Z (2 Nos)	6001 2Z (2 Nos)

DUROTUFF™ Safety and Security Products

POLYCARBONATE SHIELD MK II-B

The New Thermoformed MK II-B Shield is better in terms of Weight (lighter), Structural Strength (higher), and Ergonomics (both carriage and operations).

Feature :

- Heat & Sound Insulation
- Produced by using 100% Virgin Grade Polycarbonate Granules.
- As per DRDO/ MHA Specification.
- Provides excellent protection against brick batting, stone pelting Iron- rod / cane attacks.
- Thermoformed out of 3.2 mm or 5.5mm thick Polycarbonate sheet.
- Light weight
- High impact resistance
- Higher structural strength by design
- Good transparency
- UV stabilized sheet used to ensure long life
- Ergonomic shoulder straps for ease of carriage and in operation
- Sturdy, comfortable arm grips, arm rest cushioned to provide comfort in long use.
- Smooth and Round Edges so that it dose note cause any injury.
- Thick Ribs all along the edges for higher structural strength.



TECHNICAL DATA :

Shape: Rectangular (Thermoformed from 3.2 mm or 4mm thick. PC sheet)

Color: Clear Transparent

Dimensions: Length: 910 mm (± 10 mm), Curved Surface: 620 mm (± 10 mm), Flat: 580 mm (± 10 mm)

Thickness: 3.0 mm to 5.0mm

POLYCARBONATE LATHI (BATON) :

The Polycarbonate Lathi (Baton) has Made by Extruded Engineering Grade High Impact Polycarbonate Tube/Pipe

Feature :

- Heat & Sound Insulation • Material : PC (Polycarbonate)
- As per DRDO/ MHA Specification.
- Ultra Strong
- Non-Corrosive, Fire Proof
- Light Weight
- Transparent
- High Impact Resistance
- Long Shelf Life

Technical Features :

- Length : 1 Mt ± 10 mm
- Diameter: 25mm ± 2 mm
- Wall Thickness: 4.00mm ± 0.5 mm (Uniform Distribution)
- Weight: 350Gram ± 25 Gram
- Colour : Clear Transparent, Khakhi, Black



NOTES

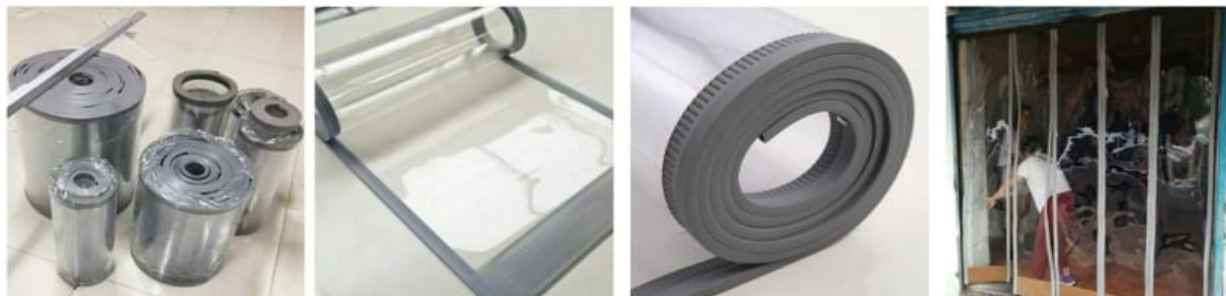
- Other sizes and varieties available upon request

*Technical Data given for guideline only.



DUROTUFF™ Magnetic PVC Curtain

Using magnetic force, better tightness makes it own better performance in Insulation, windproof, pest control than old type PVC Strip Curtains. Very popular new type PVC Strip Curtains. We highly recommend it to you.



Features and Advantages :

- Unlimited access by vehicles and Pedestrians
- Energy conservation
- Increased Efficiency on the shop floor
- Rounded edges to avoid injury to Pedestrians
- Effective reduction in heat, cold and humidity loss, noise and dust transmission
- Improved working environment
- Prevents birds, flies, insect, dust, fumes etc. from entering the working area
- Maintenance free requiring an occasional wash with plain water.

Description :

Profiles: smooth
Color selection: Clear
Temp range: -20°C to 50°C
Width: 300mm, 400mm, 450mm, 500mm
Thickness: 2mm, 3mm

Application :

Insulation
Windproof
Anti – insect

Application picture :



Applicable Industries :

- Automobile Industry
- Textile Industry
- Food / Meat Processing Industry
- Cold Storages, Ice-Cream Units
- Hotel Industry
- Pharmaceutical Industry
- Engineering Industry
- Paint Shop

COST-EFFECTIVE

Flexible PVC is cost-effective, chemical resistant and completely corrosion-free, making it ideal for areas that require regular wash down. Installation is fast and easy and no maintenance is required.

Butyl Flashing Tape

SEALANT DESCRIPTION :

To meet diverse requirements of our valued clients, we are engaged in offering an excellent range of Butyl Flashing Tape. At our well-furnished manufacturing unit, this Tape is made using quality assured raw materials and latest technology. Provided Tape is appreciated for its premium quality. Offered Tape is passed through set quality check parameters to assure its quality.

DUROTUFF™ Butyl Flashing Tape is soft, non-drying Tape sealant compound which contains virgin butyl polymer to enhance its sealing properties and aging characteristics. Butyl Flashing Tape Sealer is formulated to retain low temperature handling properties. Butyl Flashing Tape Sealer will adhere to most clean, dry surfaces such as steel, galvanized steel, aluminum, plastic, wood and concrete. The product is non-hazardous and non-toxic. Butyl Flashing Tape Sealer is 100% solids.

- Excellent sealant for metal building trade, window glazing industry, refrigeration industry, as well as many others.
- Designed for Side and end lap Sealing of metal or Plastic Panels, Roof vent and pipe flashing
- Exceed sealing requirement for AC, refrigeration and windows
- Extruded on silicone coated paper & film for easy application
- Greater cohesive strength
- Superior adhesion
- Withstands extreme roof temperatures
- Superior low temperature compressibility
- Cold Flow resistant
- Contain anti-oxidants, fungicides and anti-bacterial agent
- Seal not affected by normal movement of building
- wide service temperature range (-30C to 120 C)

Available Size : Width: 50 mm & 100mm, Length: 10 Mtr.



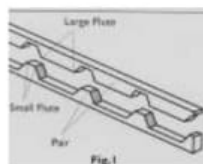
USES :

Butyl Flashing Tape Sealer is used in Tape and bead form to provide a moisture and vapor tight seal to exclude water and dust from any given area under atmospheric pressure. Butyl Flashing Tape is an excellent sealant for the metal building trade, window glazing industry, refrigeration industry, as well as many others Like. Butyl Flashing Tape will not crack or separate while being applied at low end of temperature usage range, however, it is recommended that the material be stored at moderate temperature to enhance its application characteristics. Butyl Flashing Tape when stored at warehouse conditions, will remain usable for a prolonged period.

Foam Fillers for Ridge and Eaves

We stock a wide range of Foam Fillers typically used at the Ridge and Eaves of your building. we can manufacture a bespoke filler to your requirements. Each foam filler is carefully produced by us to the highest standards of accuracy, design and quality possible. Products such as Polyethylene, Supaseal and Very High Temperature Material (VHTM) are ideal solutions for all types of cladding and rooflights, airsealing, and fire or acoustic sealing.

Ridge Fillers fill the inter-profile between ridge cap and profiled roof sheet, this filler fits downward into the valley.



Eaves Fillers are used under the roof sheets at the eaves, filling the inter-profile cavity between roof sheet and structure.



DUROTUFF PRESTIGIOUS CLIENTS



An ISO 9001 : 2015 Certified Co.

POWER CHEM PLAST LTD.

MFG. : Polycarbonate Sheets & Tubes / Pipes, PVC Sheet, APC-GI Sheet/coil & Turbo Ventilator

PLANT : BADDI, HIMACHAL PRADESH (INDIA)

Mktg. Office : 2112-A, 1st Floor, Tower-A, The Corenthum Building, Opp. Electronic City
Noida Metro Station, Sector-62, Noida-201301(INDIA) | **Tel. :** +91-120-4291459, **Toll Free No. :** 1800-121-221111
E-mail : sales@durotuff.com, sanjeev@durotuff.com | **Website :** www.durotuff.com

