

PRECISION STEEL PARALLELS

'TOOLFAST' Steel Parallels are used as precision packing supports under jobs or fixtures. Made from tool steel, hardened, tempered & precision ground in matched pairs. Matched pairs are marked with identical serial numbers. All sides are chamfered. Overall sizes are nominal.

- Hardened & Tempered 52 - 56 HRC.
- Parallelism within 0.005mm upto 200mm length.
- Inspection certificate is furnished.

MODEL	SIZE	N.W. Kgs. (Per Pair)
TSP-20	10 x 20 x 150	0.47
TSP-35	15 x 35 x 150	1.24
TSP-45	20 x 45 x 200	2.80
TSP-55	25 x 55 x 250	5.34
TSP-60	30 x 60 x 300	8.50
TSP-75	45 x 75 x 300	15.80
TSP-75-450	45 x 75 x 450	23.70



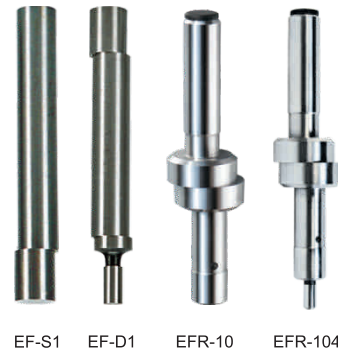
EDGE FINDER

TOOLFAST' Edge Finder is used for fast and accurate location of starting point of work pieces with respect to the machine spindle on milling or jig boring machine tables.

Application: Edge finder is used for location of edges, shoulders, grooves etc. of work pieces kept on machine table with respect to the machine spindle. Shank of the Edge Finder is held in the collet or chuck and work table is traversed to cause the rotating tip of the edge finder make contact with the edge of the work piece to be located. Once the rotating tip comes in contact with the work piece, work table is further traversed so that the rotating tip shifts to a concentric position with respect to the shank. Now any movement to "off centre" will cause a distinct 'wobble'. At this point, the distance from the work edge to the centre of machine spindle is equal to half the diameter of the tip of the edge finder. Available in single & double ended tip. In double ended tip, Edge Finder can be held from both ends and both the tips of two different sizes can be used for edge finding.

Shank and tip of the edge finder are coupled together with the help of an internal spring for independent rotation of both. It is hardened and accurately ground all over to ensure repeatability of work location within 0.01 mm.

MODEL	SHANK DIA	TIP DIA	TYPE	N. W. Kgs.
EF-S1	10	10	Edge Finder-single end	0.03
EF-D1	10	5 & 10	Edge Finder-double end	0.03
EFR-10	10	10	Edge Finder-disc type	0.06
EFR-104	10	4 & 10	Disc Type - double end	0.06

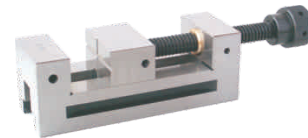


GRINDING VICE - SCREW TYPE

'TOOLFAST' Grinding Vice - screw type is a precision machine vice. Body & jaw made of tool steel, hardened, tempered & precision ground.

- Hardened & Tempered to 52 - 56 HRC.
- All sides Parallelism & Squareness within ± 0.005 mm.
- Inspection certificate is furnished.

MODEL	JAW WIDTH	JAW DEPTH	MAX. JAW OPENING	OVERALL LENGTH	OVERALL HEIGHT	N. W. Kgs.
GV-65	63	32	85	190	65	4.4
GV-75	73	35	100	210	74	6.2
GV-90	88	40	125	250	88	10.0
GV-100	100	45	125	260	95	13.0
GV-125	125	50	158	300	110	20.0
GV-150	150	50	175	315	110	24.5



PRECISION SINE VICE

'TOOLFAST' Precision Sine Vice is used to obtain precise angles by means of gauge blocks. Apart from its use on milling and grinding machine, this Sine Vice can also be used as a reference for inspection.

- All Hardened & Tempered to 52 - 56 HRC.
- All side Parallelism & Squareness within ± 0.005 mm.
- Centre distance of rollers within ± 0.005 mm.
- Inspection certificate is furnished.

Chart for setting sine angles with the help of gauge blocks is provided.

MODEL	JAW WIDTH	JAW DEPTH	MAX. JAW OPENING	OVERALL LENGTH	OVERALL HEIGHT	N. W. Kgs.
PSV-2	50	25	65	140	80	3.2
PSV-3	73	35	100	190	104	7.2
PSV-4	100	45	125	245	134	16.5

