

natco®



08-2022

TWO & THREE WHEELER COIL PLATE ASSEMBLY



PERFORMANCE RANGE

PRODUCT PRICE LIST

PROFESSIONAL



NAME	SKU	LIST-PRICE	ORDER QTY
BAJAJ			
BAJAJ 6V POINT TYPE	NCP-1	1934	
BAJAJ 12V ELECTROING	NCP-2	1641	
BAJAJ BOXER.AT	NCP-3		
BAJAJ CALIBER	NCP-4		
BAJAJ PULSAR - 150CC (KICK START)	NCP-5	970	
BAJAJ PULSAR 180	NCP-6	970	
BAJAJ WIND 125CC (KICK ELECTRONIC START)	NCP-7	1170	
BAJAJ 3WH RE 12V	NCP-8	1934	
BAJAJ DISCOVER DTS-I	NCP-51	1178	
BAJAJ CT 100 & PLATINA	NCP-52	1511	
BAJAJ DISCOVER DTS-I KICK START	NCP-53	1000	
BAJAJ DISCOVER DTS-I SELF START (UG3)	NCP-54	1170	
BAJAJ3WH CNG	NCP-55	1804	
BAJAJ XCD-135CC (KICK /ELECTRONIC START)	NCP-56		
BAJAJ XCD -135CC (KICK START)	NCP-57	1138	
BAJAJ DISCOVER 100CC/125CC/135CC/150CC	NCP-58	1138	
BAJAJ BOXER AT & CT UPGREAT	NCP-59		
BAJAJ CALIBER 115 (UPGREAT)	NCP-60		
PULSAR 150&180CC (UG4) & PULSAR 220CC N/M	NCP-61	1138	
BAJAJ 3WH 205CC (4S)	NCP-62	1804	
BAJAJ 3WH COMPACT N/M	NCP-63	1804	
PLATINA 125 KICK START	NCP-64	1170	
KB4S N/M	NCP-302	1312.5	
KB4S O/M	NCP-303	1125	
HERO			
HERO HONDA CD-100	NCP-9		
HERO HONDA CD-DAWN O/M	NCP-10	1138	
HERO HONDA CD-DAWN N/M	NCP-11		
HERO HONDA CD-DELUXE N/M	NCP-12		
HERO HONDA SPLENDOR O/M (2) HOLE	NCP-13	1138	
HERO HONDA SPLENDOR N/M PASSION	NCP-14	1138	
HERO HONDA SPLENDOR & GLAMOUR N/M	NCP-15	1349	
HERO HONDA- SS	NCP-16		
HERO PUCH	NCP-101	894	
HERO HONDA CBZ	NCP-102		
HERO HONDA CBZ O/M	NCP-103		
HERO HONDA CBZ XTREME/UBICORN-150/STUNNER/HUNK O/M	NCP-104	1090	

PROFESSIONAL
HSN-851110

Tax Applicable 28 %



NAME	SKU	LIST-PRICE	ORDER QTY
HERO			
HERO AMBITION	NCP-105		
GD DELUXE SUPER SPLENDOR & GLAMOUR O/M	NCP-106	1316	
H/H ACHIVER & HUNK	NCP-107	1090	
SPLENDOR NXG	NCP-108	1138	
KARIZMA	NCP-109	1470	
SPLENDOR PRO	NCP-110	1138	
MEASTRO EDGE/DUET	NCP-111	1100	
TVS			
TVS SCOOTY E.START (OLD)	NCP-29	1090	
TVS STAR CITY	NCP-30	926	
TVS STAR CITY (SELF START)	NCP-31	1138	
TVS CENTRA	NCP-32	926	
TVS SUPER XL (HD)	NCP-33	910	
TVS VICTOR N/M W./PICKUP COIL	NCP-34	1170	
TVS VICTOR O/M	NCP-35	1170	
TVS APACHI	NCP-36	1103	
TVS SCOOTY PEP & PEP PLUS	NCP-251	1090	
TVS APACHI RTR 160CC	NCP-252	1138	
SUZUKI ACCSS 125CC&SUZUKI HEAT O/M	NCP-253	1090	
SUZUKI SAMURAI & MAX-100	NCP-254		
TVS FLAME	NCP-255		
TVS FIERO F2	NCP-256		
TVS STAR CIY 110CC	NCP-257	1024	
SUZUKI FIERO	NCP-258		
WEGO	NCP-259	990	
APACHE RTR	NCP-260		
TVS NTORQ	NCP-261	1138	
STAR CITY PLUS/PHOENIX	NCP-262	1105	
3WH - TVS KING	NCP-263	1414	

PROFESSIONAL

HSN-851110

Tax Applicable 28 %

natco®



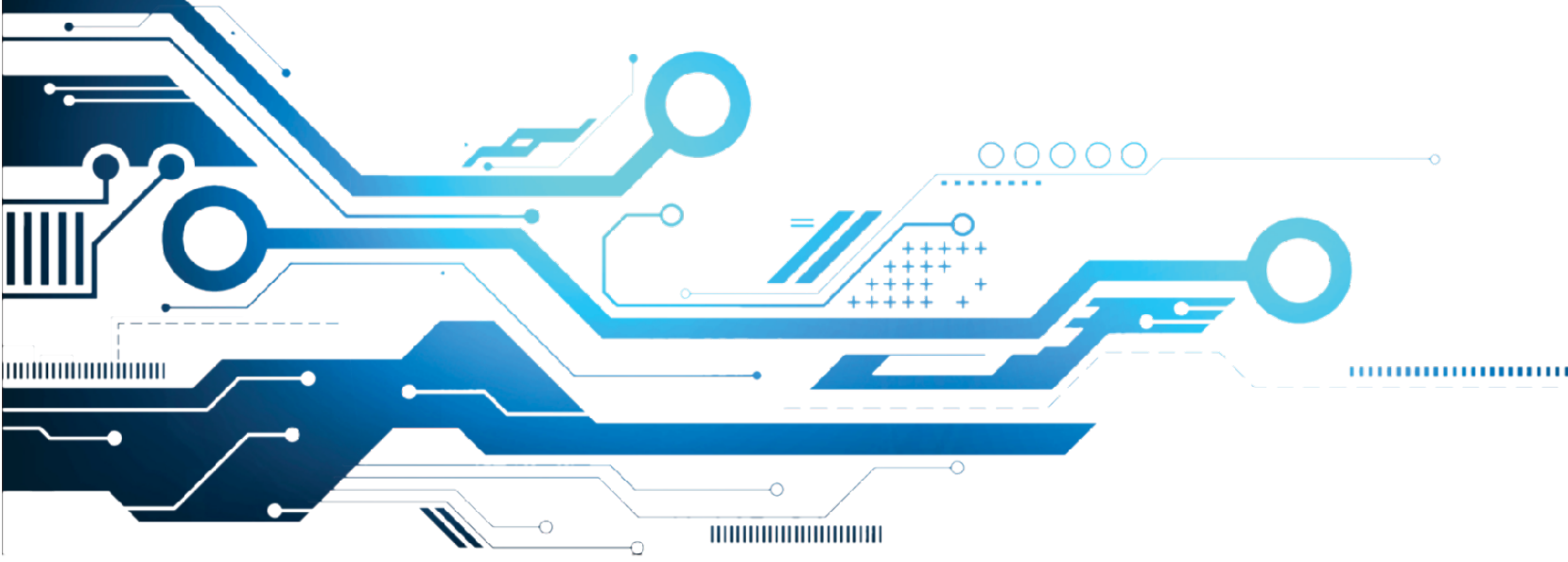
NAME	SKU	LIST-PRICE	ORDER QTY
LML			
LML FREEDOM	NCP-24	1 138	
LML VESPA 12V (PIN)	NCP-25	1 609	
LML VESPA 12V(SOCKET)	NCP-26	1 609	
LML CRD-100	NCP-27		
LML PRIMA	NCP-28		
OTHERS			
KINETIC NOVA - 115/ KINETIC CHALLENGER	NCP-37	1 117.5	
HERO PUCH ASI (INEL TYPE)	NCP-38	657.5	
PIAGGIO APE - 3WH	NCP-39	1 103	
MAHINDRA DURO / FLIGHT/RADIO	NCP-40		
YAMAHA			
YAHAMA CRUX & LEBERO 12V (12WHOLE N/M)	NCP-301		
YAHAMA CRUX & LEBERO 12V (8WHOLE O/M)	NCP-304		
YAHAMA FZ/16	NCP-305	1 446	
HONDA			
HONDA ACTIVA N/M DIO	NCP-17	1 090	
HODA ACTIVA O.M	NCP-18	1 090	
HONDA ETERNO	NCP-19		
HONDA UNICORN	NCP-20	1 090	
HONDA ACTIVA 110-CC	NCP-21		
HONDA AVAITOR O/M	NCP-22		
HONDA AVAITOR N/M	NCP-23		
HONDA PLEASURE	NCP-151		
HONDA SHINE	NCP-152	1 090	
HONDA ACTIVA HET 2013 (12-POLE)	NCP-153	1 100	
HONDA TWISTER (12-POLE)	NCP-154	1 090	
HONDA ACTIVA HET 3G/5G	NCP-155	1 100	
HONDA ACTIVA HET 125CC	NCP-156	1 100	

PROFESSIONAL

HSN-851110

Tax Applicable 28 %





natco[®]
octan[®]

Mfg & Mktd. By
Carburettor House
1587/31 Naiwala H.S Road Karol Bagh ,
New Delhi 110005 (INDIA)

Email Id natcocarburettorhouse@gmail.com

Customer Care

011-47011559 / +91-7838382488 / +91-8826373300

For Dealership Enquiry

Mr Rohit +91-9818590718

For Export Related Enquiry

Mr Ketan +91-9818449989

Disclaimer

Carburettor House Only Sells

NATCO & OCTAN Brand Products . All Brand Names Mentioned
in the list are only for Vehicle Identification.

We Do not claim to own or sell any of the Mentioned Brands.
NATCO And OCTAN are Registered Brands owned by Carburettor House
Any unauthorised usage can Attract Legal Action.

