



Manufacturer, Supplier
& Trader of
**PHARMACEUTICAL
EQUIPMENTS**



DROPPING BOTTLE WITH GLASS STOPPER (T K PATTERN), AMBER COLOUR, GAS GENERATING KIPS APPARATUS COMPLETE WITH DELIVERY TUBE AND THISTLE FUNNEL, Helium Neon Laser Light, "FITNESS STICK™ TELESCOPE (ULTIMATE PORTABLE GYM)", -20°C Mini Cooler, -20°C PCR Mini Cooler, -20°C Mini Cooler with Gel Filled Cover, 0°C Mini Cooler, 0.2 ml 8 Tube Strip with Attached Caps, 0.2 ml 8 Tube Strip with Cap, 0.2 ml 8 Tube Strip with Cap Low Profile, 0.2 ml Tube with Cap, 0.5 ml Tube with Cap, 0°C Mini Cooler with Gel Filled Cover, etc.



NURSING ANATOMICAL MODELS



FINGER TIP PULSE OXIMETER



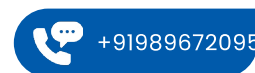
**BASILENE DOLORIMETER /
ALGORIMETER 2 LBS**



SINGHLA SCIENTIFIC INDUSTRIES

**SINGHLA SCIENTIFIC
INDUSTRIES**

ISO:9001-2015



About Us

Welcome to Singhla Scientific Industries- a premier manufacturer, trader and supplier, specializing in quality Analytical Instruments, Scientific Laboratory Equipment, Burette Test Tube, Autoclaves, Laboratory Glassware & Plasticware, Lab Iron Stand & Clamp, Lab Lances and Mirror, Vernier Clipper, Micro Meter, Lab Balances, Lab Masses, Fiber Glass Model, and allied products since 1956. The company has on offer a wide stock of products including Analytical Instruments, Autoclaves, Microscopes, Slide Storage Equipments, Entomological Equipments, Microtomes, Pharmaceutical Equipments, Pharmacological Equipments, Vacuum Pumps, etc. Fabricated utilizing best-of-breed technology, these products are in consonance with international quality standards and widely appreciated by clients for their precise designs, accuracy, reliability and excellent functionality.

Owing to a world class product range that aligns with application needs of multiple laboratories, today, we, Singhla Scientific Industries, have etched formidable business footmarks in our domain and secured goodwill and trust of clients spread across all category of laboratories like Pharmaceutical, R & D and quality control, Pathology, Microbiology and other laboratories in Medical College and Hospitals, Science teaching Under Graduates/P.G. Colleges, National Laboratories, Test houses and in industries like Pharmaceutical, Bulk Drugs, Tablet, Chemical, and Paint Industries.



Key Facts

Nature of Business	Exporter
Primary Competitive Advantages	Class A glassware,D pharmacy laboratory equipment,chemistry school lab equipment,nursing equipment,B pharmacy lab equipment,laboratory equipment,laboratory equipment,science lab equipment,biology school lab equipment,chemistry glassware
No of Staff	10
Year of Establishment	1956
OEM Service Provided	No
Memberships	ASIMA
ProductRange	Class A glassware,D pharmacy laboratory equipment,chemistry school lab equipment,nursing equipment,B pharmacy lab equipment,laboratory equipment,laboratory equipment,science lab equipment,biology school lab equipment,chemistry glassware



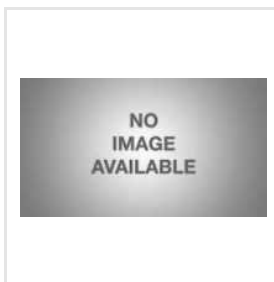
Our Products



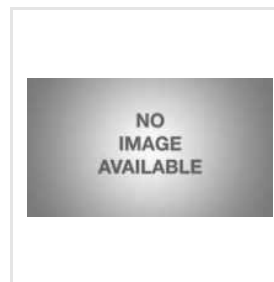
BIOSAFE CABINET



**Cozy Pac™-Terry
Cover Foam Filled With**



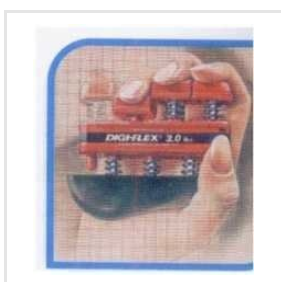
**Therapy Plus Deluxe
Stainless Steel**



**Therapy Plus Deluxe
Plastic Goniometer Set**



**PALM - Palpation Meter
(The Objective Way To**



Digit Flex 1.5 Lbs Yellow



**Deluxe Hand Helper
(Imported)**



**PLYOMETRIC
REBOUNDERS**



**Blood Storage Cabinet
/ Blood Bank**



Platelet Incubator



**Hemodialysis Chair /
Chemotherapy Chair /**



**Biological
Refrigerators Serocool**



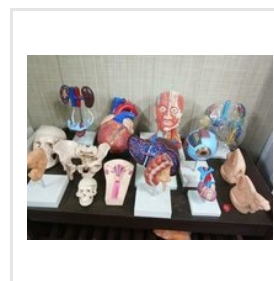
**3 Channel ECG
Machine**



Fetal Monitor



**Digital Non Contact
Thermometer**



Nursing Manikins



SINGHLA SCIENTIFIC INDUSTRIES

**SINGHLA SCIENTIFIC
INDUSTRIES**

ISO:9001-2015



+91989672095



ADDRESS

**No-5309/27, Punjabi Mohalla,
Ambala Cantt, Haryana, India
(133001).**



EMAIL

singhla@rediffmail.com



MOBILE

+919896720958



WEBSITE

www.polylabindia.com

KEY PERSONNEL

DEVENDER SINGHLA

(CHIEF EXECUTIVE)

DESIGNED AND
DEVELOPED BY

**trade
india.**