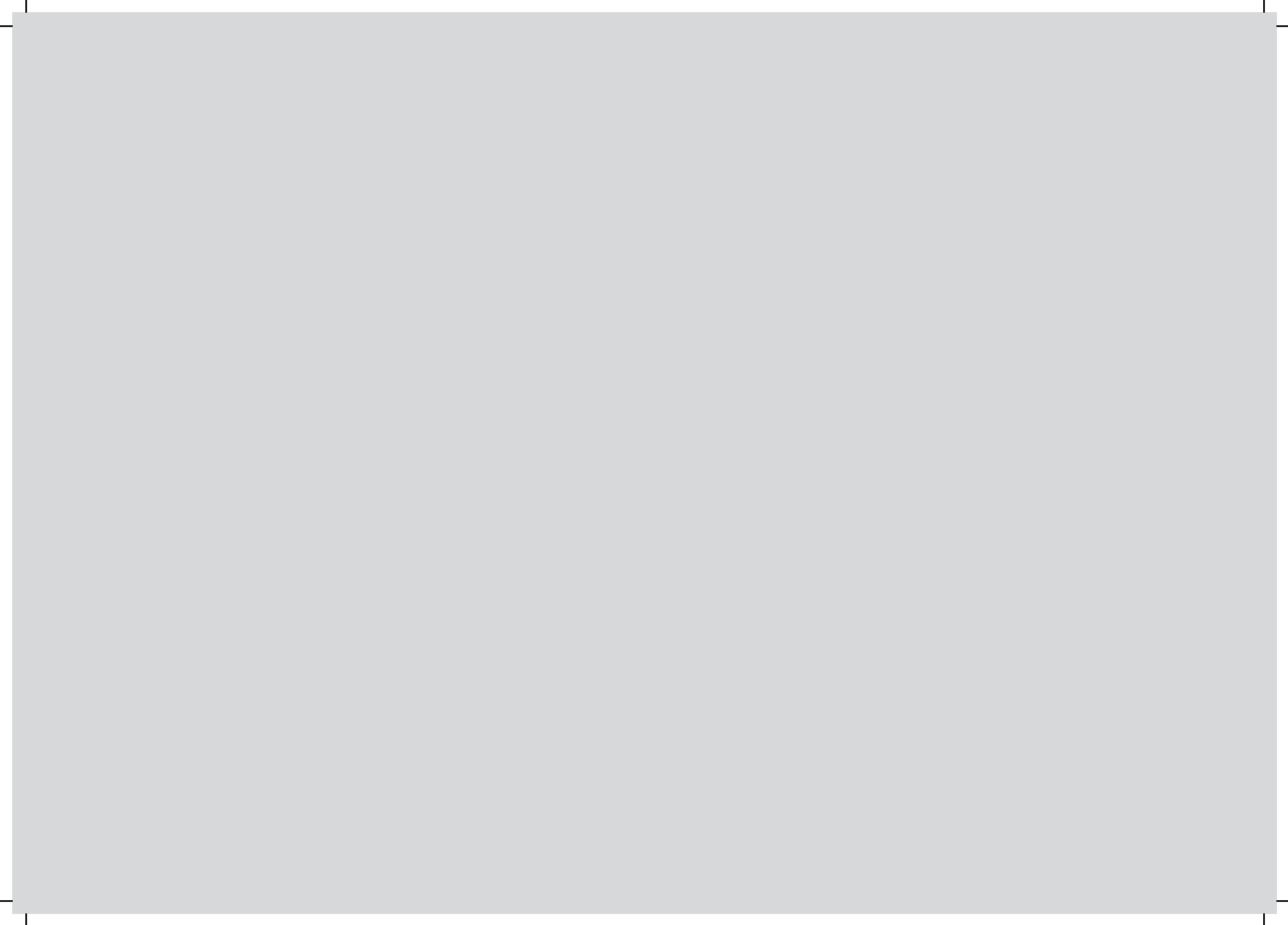




SHREE ABHAY LINK CHAINS PVT.LTD, SHEGAON, INDIA
SHREE ABHAY HOISTS & ENGINEERING PVT LTD

www.shreeabhay.com

chains@shreeabhay.com



SHREE ABHAY GROUP

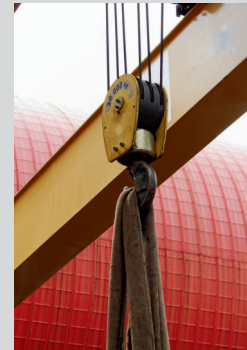
Our portfolio showcases a diverse range of expertise, from cutting-edge technology in solar energy and industrial manufacturing to a deep commitment to long-term investment, sustainable agriculture, and premium warehousing solutions.



SHREE ABHAY INDUSTRIES

Solar Power Solutions:

We specialize in integrating Solar Power Plants and have previously been MNRE-approved channel partners. Our services include the turnkey installation of Solar Power Plants and Power Parks, providing grid-tied solar power systems for industrial, commercial, utility scale projects and residential customers.



SHREE ABHAY CRANES PVT LTD.

Industrial Cranes Manufacturing:

We manufacture a wide range of industrial equipment, including Industrial Overhead Cranes, Steel Mill Cranes, Jib Cranes, Grab Buckets, Spark Proof Cranes, Transfer Trolleys, Wire Rope Hoists, Winches, and advanced Radio Frequency and PLC-controlled Cranes.



SHIV UDYOG

Authorized Marketing & Dealership:

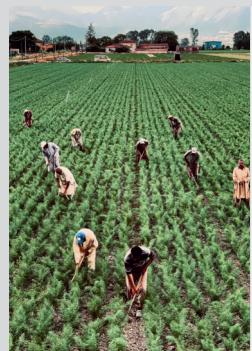
As Authorized Marketing Associates for INDEF & STIER Brand Products, we have achieved the "Clinic+" Status, the highest dealer category, recognized for our exceptional service setup and customer support.



SHRIRAM UDYOG

Investment & Financial Services:

Since 1964, we have been active in investing in Equity and Debt Instruments such as Shares, Debentures, and Bonds. We focus on long-term value investments, with a particular emphasis on Mid-Cap and Small-Cap stocks.



ABHAY FARMS

Agriculture & Organic Farming:

We cultivate approximately 300 acres of land in and around Shegaon, with a strong focus on organic farming practices.



SHRIRAM ESTATE

Real Estate & Warehousing:

Our Shriram Estate, strategically located opposite Shegaon Railway Station, offers a 100,000 sq feet warehouse within a 600,000 sq feet area. The facility is equipped with ample parking, security, firefighting systems, and other essential amenities, ensuring quality warehousing services.

ABOUT US

We are proud to introduce ourselves as India's largest manufacturer of link chains, chain slings, and related accessories.

For nearly three decades, we've provided top-quality chains for diverse applications, including material handling, mining, cement plants, power plants, ship anchoring, lifting, and non-skid tyre chains for snow vehicles.

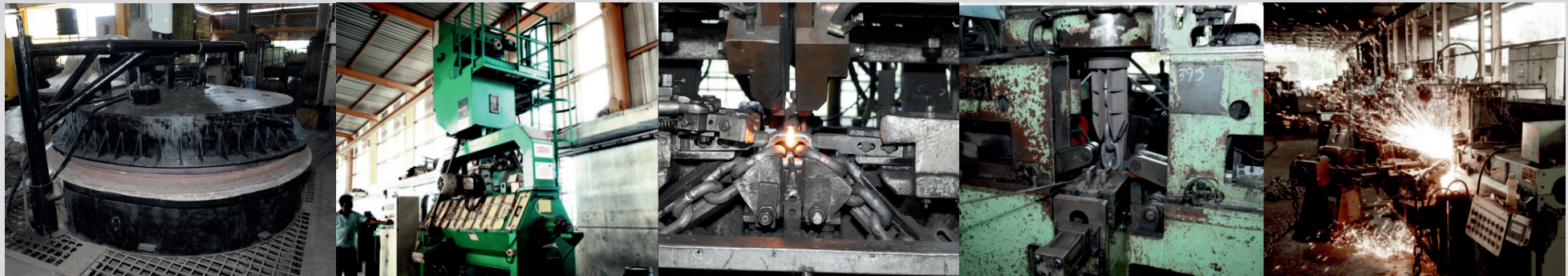
Our focus on continuous improvement and innovation, led by expert technocrats, makes us a trusted one-stop solution for our customers. Whether it's a small order or a bulk requirement, our vast inventory ensures that we can deliver the right product, precisely when and where it's needed, minimizing downtime and enhancing operational efficiency for our customers.

Committed to sustainability, our plants run on solar power and use harvested rainwater, minimizing our environmental impact.





THE MILESTONE



1996

Initiation: Began our journey in chain manufacturing by importing "WAFIOS" hand chain manufacturing machines from Germany.

2005

Expansion: Acquired the manufacturing facility and techno-commercial know-how from The Indian Link Chain Mfrs. Ltd, Mumbai.
Product Range Growth: Started manufacturing load chains, tyre chains, and related accessories.

2013

Further Expansion: Acquired chain-making machines from Uniseven Pvt Ltd, Ambernath, enhancing our production capacity.

2016

Product Range Enhancement: Purchased the manufacturing facility of Hindusthan Parsons Ltd, Nashik, enabling us to produce chains up to 38 mm in diameter.

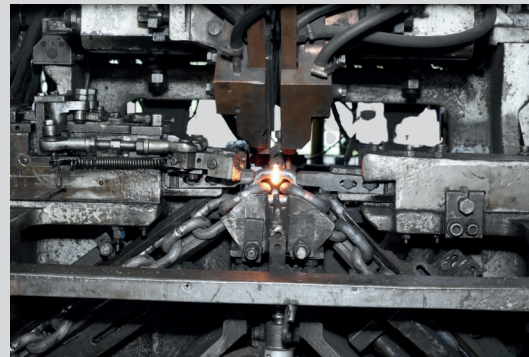
2022

Industry Leadership: Acquired machines from AIP Chain Factory, Poland, establishing ourselves as India's largest chain manufacturer by volume.

PRODUCTION FACILITY

Our highly advanced manufacturing facilities enable us to manufacture best quality chains in the market. The original “WAFIOS” make German machines producing perfect sized and shaped Chains with the appropriate heat treatment undergoing through Induction Heating Equipment makes us unique compared to others. Our company's capabilities include:

- Wire Drawing Facility: 4 in-house lines.
- Wire Shot Blasting Facility: 1 imported continuous line.
- Chain Bending and Welding Machines:
 - 11 Wafios sets for alloy steel chains, producing 500 tonnes per month.
 - 15 Wafios sets for mild steel chains, producing 300 tonnes per month.
 - 3 MRP sets for alloy steel chains (20 mm to 40 mm), producing 125 tonnes per month.
- Proof Load Testing Equipment: 4 calibrated units, each with a 200+ton capacity.
- Induction Hardening Equipment: 7 units.
- Spherodizing Annealing Furnace: 1 unit.
- Tempering Furnace & Ovens: 5 VR units.



PRODUCTION FACILITY

- Calibration Machines:
 - 1 Wafios unit.
 - 4 European-made units.
 - 4 Indian-made units.
- Measurement & Inspection: Calibrated measuring and inspection equipment.
- Hardness Testing: Rockwell hardness testing machines.
- Electroplating Facility: In-house.
- PVC Coating Plant: In-house.
- Tool Room: Equipped with lathes, drilling machines, shapers, milling machines, etc.
- Case Hardening Facility: Partnership with a vendor with 30 years of experience.



QUALITY CONTROL

Chains are safety items and must be self certified by the manufacturers with regard to the quality. The manufacturer's test certificate signed by a competent Authority Certifies the proof load, safe working load, breaking load and other physical and chemical properties.

The Quality Control department is well equipped with all necessary testing machines like 20T, 30T, 100T & 120 Tons Tensile testing with 90 ft. beds' Proof Load Testing Machines, Calibration Machines of various sizes, Crack Detecting Machines; Hardness Testing Machines and various other Instruments for assuring Quality from Raw material to Finished Chains Further, the department is manned by experts well acquainted with necessary standards and specifications like, DIN, BIS, ISO, etc. The Department monitors each operation against a quality control manual developed by the company to achieve consistent results, so important for chains.

As a result of continuous effort in this direction, the company has earned a reputation as a Manufacturer of Superior Quality Chains.





PRODUCT
LINEUP _____

MINING – MINING CHAINS AND ACCESSORIES

Mining Chains for use with Conveyors or Haulages are supplied conforming to specifications IS:3948, DIN: 22252 & DIN:20637 or to conform to any other special requirement of customer.

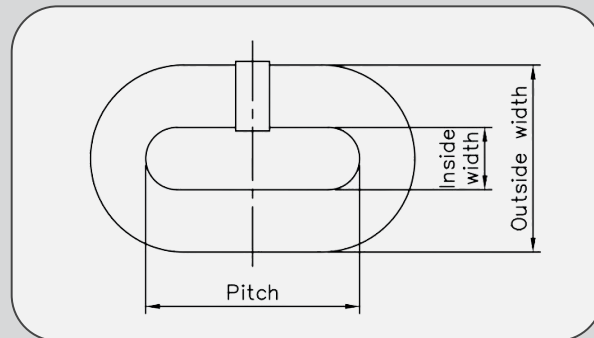
SPECIFICATION:

Material High Grade Manganese Steel for GR. B Chain and Ni Cr Moly Steel for Gr. C Chain

Heat Treatment Hardened and Tempered

Process of Manufacture Resistance Butt Welded up to 20 mm Dia and Flash Butt Welded 22 mm Dia and above

Delivery condition Chains are calibrated & supplied in Matched pairs



TECHNICAL DATA AS PER IS: 3948 & DIN: 22252

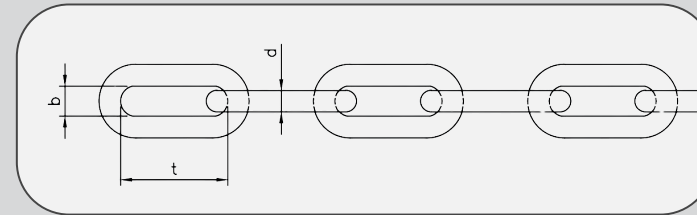
All dimensions in mm									
Nominal Chain Size		14 x 50	18 x 64	19 x 64.5	22 x 86	24 x 86	26 x 92	30 x 108	34 x 126
Material Diameter and Tolerance		14 ± 0.4	18 ± 0.5	19 ± 0.5	22 ± 0.7	24 ± 0.8	26 ± 0.8	30 ± 0.9	34 ± 1.0
Pitch and Tolerance		50 ± 0.5	64 ± 0.6	64.5 ± 0.6	86 ± 0.9	86 ± 0.9	92 ± 0.9	108 ± 0.10	126 ± 1.0
Outside Width (Maximum)		48	60	63	74	79	86	98	109
Inside Width (Minimum)		17	21	22	26	28	30	34	38
Test Force (KN)	Gr B	150	250	280	380	450	530	710	1160
	Gr C	200	330	360	490	580	680	900	1450
% Total Elongation At Test Force (Maximum)	Gr B	1.4	1.4	1.4	1.4	1.4	1.4	1.4	1.4
	Gr C	1.6	1.6	1.6	1.6	1.6	1.6	1.6	1.6
Minimum Breaking Force (KN)	Gr B	190	320	360	480	570	670	890	1450
	Gr C	250	410	450	610	720	850	1130	1790
% Total Elongation At Break (Min)		12% Minimum as per IS, 14% Minimum as per DIN							
Bend Test Deflection In mm - BS, ISO & IS DIN		11	14	15	18	20	21	24	27
Approximate Weight Per Meter (Kg)		4.0	6.6	7.0	9.6	11.8	13.9	18.4	22.9

MINING - MINING CHAINS AND ACCESSORIES



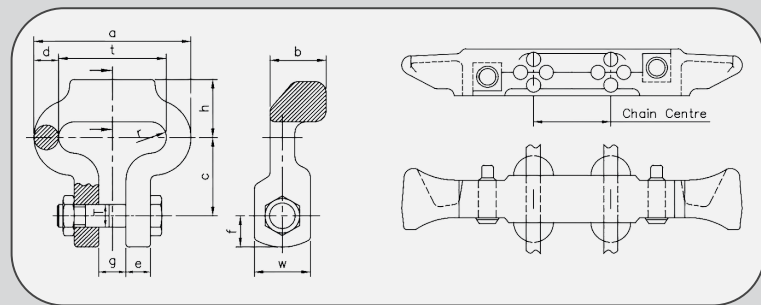
SHACKLE TYPE CONNECTORS & SCRAPER BAR

These connectors are designed to bolt rigidly to Scraper Bars, thereby enhancing their mechanical properties. It is important to ensure that bolt is correctly tightened, otherwise full benefits of this type of shackle are lost. Rigid assemblies improve location in the pan race and reduce fines build up. The connectors are based on specification ISO:1082/IS:5626 with dimensions & mechanical requirements as below. Connectors and Scraper Bars are also manufactured as per user's / OEM Design:



TECHNICAL DATA AS PER DIN: 20637

Nominal Size (d x t) (mm)	Nominal Dia (mm) d	Preferred Pitch (Inner Length) (mm) t	Pitch Tolerance (1 Link) (mm)	Preferred inside width (mm) b		Proof Load (KN)	Elongation at Proof Load % (Max)	Break Load (KN) (Min)	Total Ultimate Elongation % (Min)	Approx Weight Per Mtr (KG)
16 x 80	16 ± 0.6	80	± 1.5	22.4	+ 3 - 0	60	1.6	180	20	4.8
18 x 90	18 ± 0.9	90	± 1.5	25	+ 3 - 0	100	1.6	250	20	6.2



TECHNICAL DATA OF CONNECTOR

Nominal size	d	t	a max	c	h	b	g	e	f	w	r	T	Weight kg
14 x 50	14	50	81	47.5	29	30	16	14	18	29	7.5	M16	0.7
18 x 64	18	64	103	55	43	40	20	18.5	40	40	9.5	M20	1.25
19 x 64.5	19	64.5	105	55	44	40	21	19	40	40	10	M20	1.3
22 x 86	22	86	134	75	58	46	24	22	44	52	11.5	M24	2.5
24 x 86	24	86	138	78	58	51	26	24	44	53	12.5	M24	2.8
26 x 92	26	92	148	85	58	53	30	26	46	58	14	M27	3.25

POWER – CHAINS & CONNECTORS FOR SCRAPER CONVEYOR

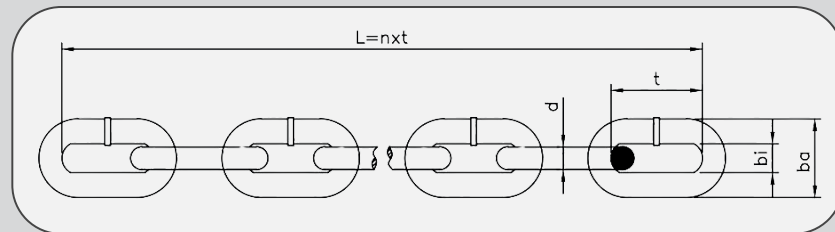


Link Chains for Scraper Chain Conveyors are generally Case Carburized for High Wear / Abrasive Resistance characteristics having close dimensional tolerances for running of chains & associated connectors over sprockets with reliability under severe operating conditions and / or at high speeds. Generally manufactured as per OEM Design.

SPECIFICATION:

Material	Ni Cr Moly Steel.
Heat Treatment	Case Carburized, Double Quenched with Core Refining & Tempered.
Surface Hardness	HRC 58 - 62.
Process of Manufacture	Resistance Butt Welding up to 20 mm Dia and Flash Butt Welding 22 mm and above
Case Depth	0.1d with Tolerance $\pm 0.01d$
Delivery condition	Chains are calibrated & supplied in matched pairs.

Chain Size d x t (mm)	Chain Width		Weight (Kg/m)	Proof Load (KN)	Breaking Load (KN)
	Bi (min) (mm)	Ba (max) (mm)			
10 x 38	12.5	34	2.1	38	64
14 x 50	16.3	47	4	74	128
14 x 64	16.3	47	3.7	74	128
16 x 64	20	55	5.1	96	160
18 x 64	21	60	6.6	120	200
19 x 120	23	64.5	6.3	135	227
22 x 86	26	74	9.7	182	304
26 x 100	31	87	13.3	255	425
30 x 120	36	102	17.5	340	566
34 x 136	39	113	23.8	425	710



POWER – CHAINS & CONNECTORS FOR SCRAPER CONVEYOR



FLAT HEAD CHAIN CONNECTOR FOR SCRAPER CONVEYOR

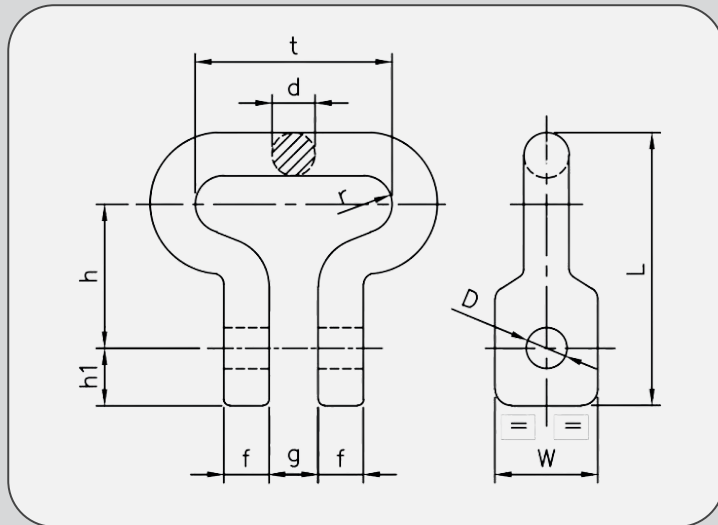
SPECIFICATION:

Material C-45

Process of Manufacture Closed Die Forging

Heat Treatment Hardened & Tempered all over to a strength of 100-120 Kg/mm² & crown specially hardened to RC 50-55 to depth of 0.1d

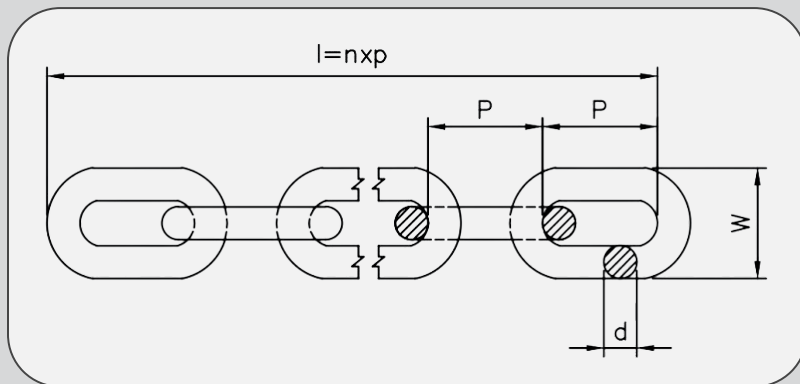
Nominal Chain size d x t	t	d	h	h1	f	g	L	W	r	D
18 x 64	64	18	56	25	15	22	109	40	10	22
22 x 86	86	22	89	28	22	24	153	48	15	26
26 x 91	91	26	95	30	26	28	168	52	17.5	26



CEMENT – BUCKET ELEVATOR CHAINS & U-LINKS

BUCKET ELEVATOR CHAINS AS PER DIN 764 & 766

Process of Manufacture	Resistance Butt Welding up to 20 mm Dia and Flash Butt Welding 22 mm and above
Material	Ni Cr Mo steel
Heat Treatment	Case Carburized, Double Quenched, Core Refined & Tempered
Case Depth	0.1d Tolerance \pm 0.01d up to 26mm Dia 0.1d Tolerance + 0.01d - 0.02d above 26mm Dia
Surface Hardness	HRC 58 - 62
Supply Condition	Chains are supplied in matched pairs.



TECHNICAL DATA

DIN 764						Pitch of Appropriate Chain Bow with Non Tooth Sprocket (mm)
Nominal Diameter d (mm)	Pitch (mm) (P)	Outside Width (W) (mm) MIN	Weight (Kg/M)	Min. Breaking Load		
				GR 25 (KN)	GR 29 (KN)	
10	35	34	2.0	40	48	45
13	45	44	3.4	64	76	56
16	56	54	5.2	100	118	63
18	63	60	6.5	125	150	70
20	70	67	8.20	160	190	80
23	80	77	11.0	200	236	91
26	91	87	14.0	250	300	105
30	105	99	19.0	340	400	126
36	126	119	26.5	500	600	147

DIN 766					
Nominal diameter d (mm)	Pitch (p) (mm)	Outside Width (W) (mm) MIN	Weight (Kg/M)	Min. Breaking Load	
				GR 25 (KN)	GR 29 (KN)
10	28	34	2.2	40	48
13	36	44	3.7	64	76
16	45	54	5.8	100	118
18	50	60	7.4	125	150
20	56	67	9.0	160	190
23	64	77	12.0	200	236
26	73	87	15.0	250	300
30	84	101	20.2	340	400
36	101	122	29.0	500	600

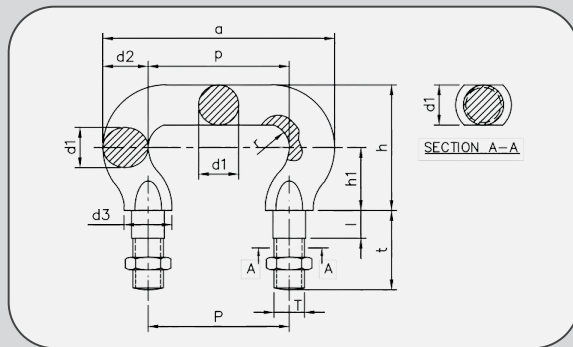
CEMENT - BUCKET ELEVATOR CHAINS & U-LINK



SPECIFICATION

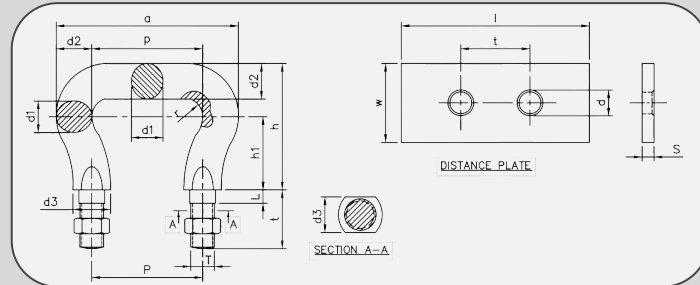
Material C-45
Heat Treatment Hardened & Tempered all over to a strength of 100-200 kg/mm²
Special Hardening Crown specially hardened to HRC 50-55
Depth of Hardening 0.1d

DIN 745 / ALONG WITH DIN 764 CHAIN



P (mm)	a (mm)	d1 (mm)	d2 (mm)	d3 (mm)	h (mm)	h1 (mm)	t (mm)	l (mm)	r (mm)	T (mm)	Proof Load (kN)	Breaking Load (kN)	Appropriate Chain Size (mm)	Weight Each (Kgs.)
56	92	16	18	19	50	25	32	8	9.5	12	50	112	13	0.36
63	105	18	21	23	60	30	40	8	10.5	16	63	142	16	0.5
70	116	20	23	28	68	34	45	10	12	20	80	176	18	0.8
80	132	23	26	31	74	37	45	10	13	20	100	230	20	1.00
91	149	26	29	34	86	43	55	12	14.5	24	126	300	23	1.70
105	172	30	34	38	100	50	55	12	17	24	170	395	26	2.20
126	206	36	40	44	118	59	70	16	20.5	30	250	570	30	3.80
147	239	42	46	50	136	68	70	16	23.5	30	340	775	36	5.30
147	239	42	46	50	136	68	85	16	23.5	36	340	775	36	6.50

DIN - 5699 / ALONG WITH DIN 766 CHAIN



P (mm)	a (mm)	d1 (mm)	d2 (mm)	d3 (mm)	d4 (mm)	h (mm)	h1 (mm)	t (mm)	L (mm)	r (mm)	T (mm)	Proof Load (kN)	Breaking Load (kN)	Appropriate Chain Size (mm)	Weight (Kgs.)
56	92	16	18	19	17	64	34	35	8	9.5	14	50	125	13	0.36
63	105	18	21	23	20	71	37	40	8	11.0	16	63	165	16	0.60
70	116	20	23	28	23	80	42	45	10	12.0	20	80	200	18	0.90
80	132	23	26	31	25	89	47	45	10	13.0	20	100	260	20	1.20
91	149	26	29	34	29	99	52	55	12	15.0	24	150	330	23	1.90
105	173	30	34	38	31	114	60	55	12	17.0	24	200	450	26	2.60
126	206	36	40	44	37	134	71	65	16	20.0	30	280	635	30	4.40
147	241	42	47	50	42	157	81	75	16	23.0	36	380	870	36	7.30

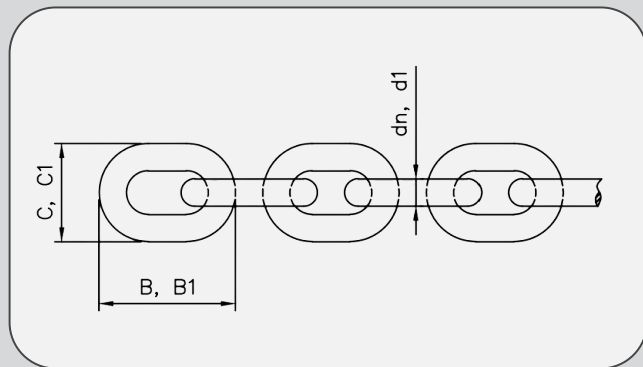
SHIPBUILDING - ELECTRICALLY WELDED STUDLESS LINK ANCHOR CHAINS



Studless Link Anchor Chain are generally of two grades - 1) Mild Steel 2) Special steel which are commonly known as open link chain to specification IS: 4692 - 2013

SPECIFICATION:

Material	Mild Steel for Grade 1 and Special Steel for Grade 2
Heat Treatment	Grade 1 - As Welded or Normalized, Grade 2 - Normalized or Hardened & Tempered
Process of Manufacture	Resistance Butt Welding up to 20 mm Dia and Flash Butt Welding 22 mm and above
Delivery condition	Chains are calibrated & supplied as per users requirements



TECHNICAL DATA AS PER IS : 4692 - 2013

Nominal Dia. Of common link (dn) (mm)	Outside length (B) (mm)	Outside Width (C.) (mm)	Dia. Of End link (d1) (mm)	Outside length (B1) (mm)	Outside Width (C1) (mm)	Mild steel Gr. 1		Special Steel Gr. 2	
						Proof Load (KN)	Break Load (KN)	Proof Load (KN)	Break Load (KN)
6	30.0	21.6	7	36	23	8.9	17.8	11.4	22.8
7	35.0	25.2	8	42	27	12.5	25.0	15.9	31.8
8	40.0	28.8	9	48	30	15.9	31.8	20.2	40.4
9	45.0	32.4	10	54	34	20.0	40.0	25.5	51.0
10	50.0	36.0	11	60	38	24.8	49.6	31.5	63.0
11	55.0	39.6	12	66	42	30.0	60.0	38.1	76.2
12	60.0	43.2	13	72	46	35.7	71.4	45.3	90.6
12.5	62.5	45.0	14	75	48	38.7	77.4	49.1	98.2
14	70.0	50.4	15	84	53	48.6	97.2	63.0	126.0
16	80.0	57.6	18	96	61	63.5	127.0	81.0	162.0
17.5	87.5	63.0	19	105	67	76.0	152.0	96.3	192.6
19	95.0	68.4	21	114	72	89.3	176.6	113.5	227.0
20.5	102.5	73.8	23	123	78	104.0	208.0	132.0	264.0
22	110.0	79.2	24	132	84	120.0	240.0	155.0	310.0
24	120.0	86.4	26	144	91	142.6	285.2	181.0	362.0
26	130.0	93.6	29	156	99	167.0	334.0	213.0	426.0
28	140.0	100.8	31	168	106	194.5	389.0	247.0	494.0
30	150.0	108.0	33	180	114	223.0	446.0	283.0	566.0
32	160.0	115.2	35	192	122	254.0	508.0	322.0	644.0
34	170.0	122.4	37	204	129	286.0	572.0	364.0	728.0
36	180.0	129.6	40	216	137	321.5	643.0	408.0	816.0

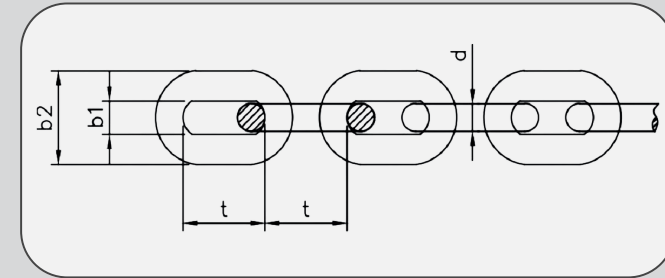
*Shipbuilding Studless Anchor Chains can also be manufactured customized as per customers drawings

LIFTING – SHORT LINK CHAINS

ALLOY STEEL CHAIN GR 80, GRADE T AS PER ISO: 3077

SPECIFICATION:

- Material** Ni Cr Moly Steel.
- Heat Treatment** Hardened & Tempered.
- Process of Manufacture** Resistance Butt Welding up to 20 mm Dia and Flash Butt Welding 22 mm and above
- Delivery condition** Chains are supplied in standard lengths in MS drum packing.



Diameter		Pitch		Width		Working Load Limit (t)	Proof Force KN	Breaking Load KN(min)	Weight (Approx) Kg/m
Nominal d	Tolerance	Nominal t	Tolerance	Internal b1 min.	External b2 max.				
5	± 0.2	15	+0.3 -0	6.0	17	0.8	19.6	31.4	0.5
6.3	± 0.2	19	+0.4 -0	7.2	20.4	1.2	31.2	49.9	0.9
7.1	± 0.3	21	+0.5 -0	8.4	23.8	1.6	39.6	63.3	1.1
8	± 0.3	24	+0.5 -0	9.6	27.2	2	50.3	80.4	1.4
9	± 0.4	27	+0.6 -0	10.8	30.6	2.5	63.6	102	1.75
10	± 0.4	30	+0.7 -0	12	34	3.2	78.5	126	2.15
11.2	± 0.4	34	+0.8 -0	13.2	37.4	4	98.5	158	2.7
12	± 0.5	36	+0.8 -0	15	42	4.6	114	182	3.15
12.5	± 0.5	38	+0.8 -0	14.4	40.8	5	123	196	3.3
13	± 0.5	39	+0.8 -0	15.6	44.2	5.3	133	212	3.6
14	± 0.6	42	+0.8 -0	16.8	47.6	6	154	246	4.1
16	± 0.6	48	+0.9 -0	19.2	54.4	8	201	322	5.4
18	± 0.9	54	+1.0 -0	21.6	61.2	10	254	407	7.2
20	± 1	60	+1.2 -0	24	68	12.5	314	503	8.8
22	± 1.1	66	+1.3 -0	26.4	74.8	15	380	608	10.5



LIFTING - ROUND STEEL LINK CHAINS FOR HOISTS AS PER DIN 5684 – 5 , EN 818-7



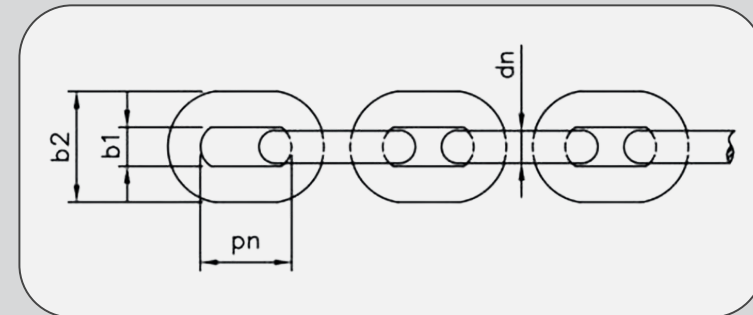
SPECIFICATION:

Material Resistance Butt Welding up to 20 mm Dia and Flash Butt Welding 22 mm and above

Heat Treatment Low Carbon Alloy Steel

Process of Manufacture Hardened & Tempered

Delivery condition Chains are supplied in standard lengths in MS drum packing.



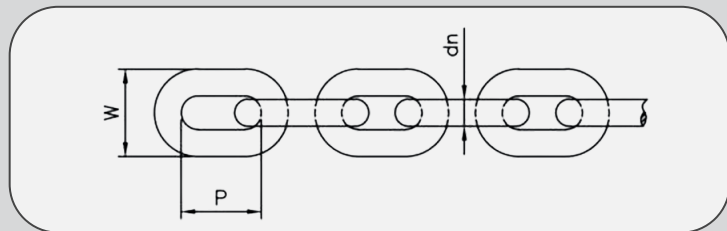
TECHNICAL DATA AS PER DIN 5684-5								
Nominal Size (dn) (mm)	Diameter Tolerance (mm)	Pitch (pn) (mm)	Pitch Tolerance (mm)	Inside Width b1 (mm) (Min)	Outside Width b2 (mm) (Max)	Lifting Capacity (KG)		Approx weight Per Mtr (KG)
						Motorized Hoists	Manual Hoists	
5	± 0.2	15	+0.2 -0.1	6.0	17.0	400	500	0.54
5	± 0.2	18.5	+0.25 -0.1	6.0	17.0	400	500	0.5
6	± 0.2	18	+0.25 -0.1	7.2	20.4	600	750	0.8
6	± 0.2	18.5	+0.25 -0.1	7.2	20.4	600	750	0.78
7	± 0.3	21	+0.3 -0.15	8.4	23.8	800	1000	1.1
7	± 0.3	22	+0.3 -0.15	8.4	23.8	800	1000	1.1
8	± 0.3	24	+0.3 -0.15	9.6	27.2	1000	1250	1.4
9	± 0.4	27	+0.35 -0.2	10.8	30.6	1250	1600	1.75
10	± 0.4	28	+0.35 -0.2	12.0	34.0	1600	2000	2.2
11	± 0.4	31	+0.4 -0.2	13.2	37.4	2000	2500	2.7
13	± 0.5	36	+0.5 -0.25	15.6	44.2	2650	3350	3.7
14	± 0.6	41	+0.55 -0.25	16.8	47.6	3070	3840	4.3
16	± 0.6	45	+0.6 -0.3	19.2	54.4	4010	5020	5.7
18	± 0.9	50	+0.65 -0.35	21.6	61.2	5080	6350	7.3
20	± 1.0	60	+0.8 -0.4	24.0	68.0	6280	7820	8.8
22	± 1.1	66	+0.85 -0.45	25.4	74.8	7590	9490	10.5

TECHNICAL DATA AS PER EN 818-7 GRADE T							
Nominal Size (dn) (mm)	Dia meter tolerance (mm)	Pitch (pn) (mm)	Pitch tolerance (mm)	inside width b1 (mm) (Min)	Outside Width b2 (mm) (Max)	Lifting Capacity (TON)	Approx weight Per Mtr (KG)
5	± 0.2	15	0.3	6.0	17.0	0.8	0.54
6	± 0.2	18	0.35	7.2	20.4	1.1	0.8
7	± 0.3	21	0.4	8.4	23.8	1.5	1.1
8	± 0.3	24	0.5	9.6	27.2	2.0	1.4
9	± 0.4	27	0.5	10.8	30.6	2.5	1.75
10	± 0.4	30	0.6	12.0	34.0	3.2	2.15
11	± 0.4	33	0.6	13.2	37.4	3.8	2.7
12	± 0.5	36	0.7	14.4	40.8	4.5	3.15
13	± 0.5	39	0.8	15.6	44.2	5.3	3.6
14	± 0.6	42	0.8	18.8	47.6	6.0	4.1
16	± 0.6	48	0.9	19.2	54.4	8.0	5.4
18	± 0.9	54	1.0	21.6	61.2	10.0	7.2
20	± 1.0	60	1.2	24.0	68.0	12.5	8.8
22	± 1.1	66	1.3	26.4	74.8	15.0	10.5

GRADE 80 / T8 CALIBRATED CHAIN AS PER IS: 6216-1982

SPECIFICATION:

Material	Low Carbon Alloy Steel
Heat Treatment	Hardened & Tempered.
Process of Manufacture	Resistance Butt Welding
Delivery condition	Chains are supplied in standard lengths in MS drum packing.



All dimensions in millimeters

Nominal Size / Diameter	Diameter Tolerance (d-dn)		Preferred Pitch (Inside Length) 3dn	Pitch Tolerance (One Link only)	Preferred Outside Width 3.25 dn	Outside Width Tolerance		Proof Force (Acceptance) (KN)	Minimum Breaking force (KN)	Working Load Limit (T)	Weight (Approx) kg/m
						Away from Weld Zone +0.075 dn	At weld Zone +0.17 dn				
5	+0.1	-0.3	15	0.29	17	0.38	0.83	15.8	31.6	0.8	0.5
6	+0.12	-0.36	18	0.35	20	0.45	1	22.7	45.4	1.1	0.8
*6.3	+0.2	-0.2	19	0.4	20.4	0.47	1.07	25	50	1.3	0.9
*7.1	+0.14	-0.43	21	0.41	23	0.54	1.2	31.7	63.4	1.6	1.1
8	+0.16	-0.48	24	0.46	26	0.6	1.4	40.3	80.6	2	1.4
*8	+0.16	-0.48	23	0.44	26	-0.8	-	40.3	80.6	2	1.4
*9	+0.18	-0.54	27	0.52	30	0.68	1.6	51	102	2.5	1.75
10	+0.2	-0.6	30	0.58	33	0.75	1.7	63	126	3.2	2.15
11	+0.22	-0.66	33	0.64	36	0.83	1.9	7	154	3.8	2.7
12	+0.24	-0.72	36	0.69	42	0.9	2	91	182	4.6	3.15
*12	+0.24	-0.72	33.0	0.65	39	-1.0	-	91	182	4.6	3.15
14	+0.28	-0.84	42	0.81	46	1.05	2.4	124	248	6.3	4.1
16	+0.32	-0.96	48	0.93	52	1.2	2.7	161	322	8	5.4
18	+0.90	-0.90	54	1.04	59	1.35	3.1	204	408	10	7.2
20	+1.0	-1.0	60	1.16	65	1.5	3.4	252	504	12.5	8.8

- These sizes will be supplied subject to agreement between the manufacturer and the purchaser.

GRADE 80 / T8 NON-CALIBRATED CHAIN AS PER IS: 6215-1982

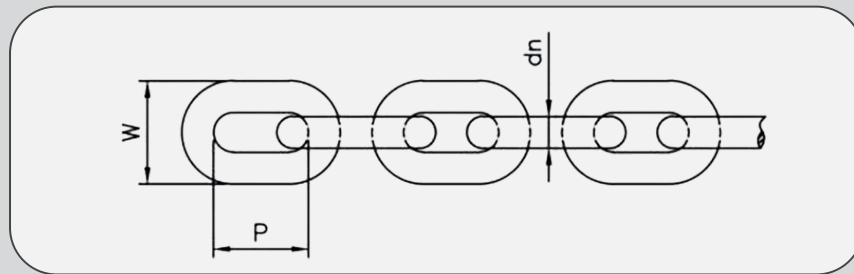
SPECIFICATION:

Material Low Carbon Alloy Steel up to 20 mm & Ni Cr Mo Steel for 22 mm & above

Heat Treatment Hardened & Tempered.

Process of Manufacture Resistance Butt Welding up to 20 mm & Flash Butt Welding for 22 mm & above

Delivery condition Chains are supplied in standard lengths in MS drum packing.



Nominal Size dn	Diameter Tolerance (d-dn)		Outside Link Length Limits		Outside Width Away from Weld W Max (3.5 dn)	Proof force (Acceptance) (KN)	Minimum Breaking Force (KN)	Working Load Limit (t)	Weight (Approx) Kgs/M
			Maximum 5 dn	Minimum 4.75 dn					
8	+0.5	-0.48	40	38	28	40.3	80.6	2.0	1.4
9	+0.5	-0.54	45	43	32	51	102	2.5	1.75
10	+0.5	-0.60	50	47	35	63	126	3.2	2.15
11	+0.5	-0.66	55	52	39	77	154	3.8	2.7
12	+0.5	-0.72	60	57	42	91	182	4.6	3.15
14	+0.5	-0.84	70	66	49	124	248	6.3	4.1
16	+0.5	-0.96	80	76	56	161	322	8	5.4
18	+0.9	-0.90	90	85	63	204	408	10	7.2
20	+1.0	-1.0	100	95	70	252	504	12.5	8.8
22	+1.1	-1.1	110	104.5	77	310	620	16	10.5
25	+1.25	-1.25	125	119	88	393	786	20	13.8
28	+1.4	-1.4	140	133	98	493	986	25	17.5
32	+1.6	-1.6	160	152	112	644	1288	32	22.5
36	+1.8	-1.8	180	171	126	815	1630	40	28.5

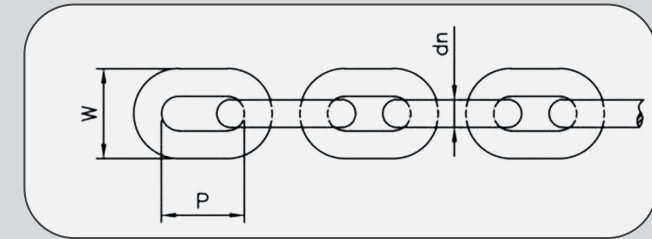
All dimensions in millimeters



GRADE 30 / L3 CALIBRATED CHAIN AS PER IS: 2429 (PART II) - 1970

SPECIFICATION:

Material	High Grade Mild Steel
Heat Treatment	Stress Relieved
Process of Manufacture	Resistance Butt Welding up to 20 mm & Flash Butt Welding for 22 mm & above
Delivery condition	Chains are supplied in standard lengths in MS drum packing.



TECHNICAL DATA AS PER IS:2429 (PART-II)-1970

Nominal Size (dn) (mm)	Diameter Tolerance (mm)	Preferred Pitch (Inner Length) (mm) p	Pitch Tolerance (1 Link) (mm)	Preferred Outside width (mm) w	Outside Width Tolerance		Proof Load (KN)	Minimum Breaking Load (KN)	Safe Working Load (Ton)	Approx Weight Per Mtr (KG)
					Away from Weld (mm)	At Weld (mm)				
6.3	+0.12 -0.38	19	0.26	20	+0.45	+1.1	9.5	18.9	0.48	0.9
7.1	+0.14 -0.43	21	0.30	23	+0.52	+1.2	11.8	23.6	0.60	1.1
8	+0.16 -0.48	24	0.33	26	+0.59	+1.4	15.1	30.2	0.76	1.4
9	+0.18 -0.54	27	0.36	29	+0.67	+1.5	19.0	38.1	0.96	1.75
10	+0.20 -0.60	30	0.40	32	+0.75	+1.7	23.6	47.1	1.20	2.15
11.2	+0.22 -0.67	34	0.44	36	+0.84	+1.9	29.6	59.2	1.50	2.7
12	+ 0.24 -0.72	36	0.47	42	+0.89	+2.0	35.7	71.4	1.80	3.15
12.5	+0.25 -0.75	37	0.49	41	+0.93	+2.1	36.9	73.8	1.88	3.25
14	+0.28 -0.84	42	0.55	46	+1.05	+2.4	46.5	93	2.36	4.1
16	+0.32 -0.96	48	0.63	52	+1.2	+2.7	60	120	3.05	5.4
18	+0.90 -0.90	54	0.71	58	+1.35	+3.0	76.5	153	3.89	7.2
20	+1.0 -1.0	60	0.79	65	+1.5	+3.4	89.5	189	5.00	8.8
22.4	+1.1 -1.0	66	0.88	73	+1.7	+3.8	114	228	5.81	10.5
25	+1.2 -1.2	75	0.99	82	+1.9	+4.3	148	296	7.54	13.8
28	+1.4 -1.4	84	1.1	91	+2.1	+4.8	186	372	9.48	17.5
32	+1.6 -1.6	96	1.2	104	+2.4	+5.4	242	483	12.33	22.5
36	+1.9 -1.9	108	1.4	117	+2.7	+6.1	305	610	15.49	28.5

GRADE 30 / L3 CALIBRATED CHAIN AS PER DIN 763 : 1990



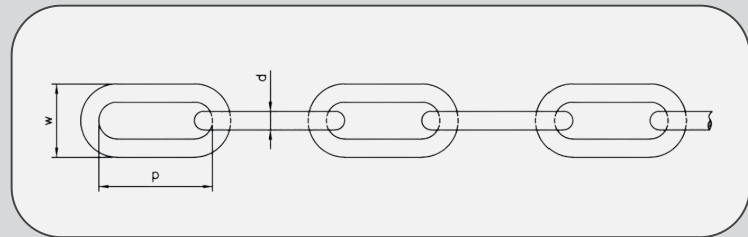
SPECIFICATION:

Material High Grade Mild Steel

Heat Treatment Stress Relieved

Process of Manufacture Resistance Butt Welding up to 20 mm & Flash Butt Welding for 22 mm & above

Delivery condition Chains are supplied in standard lengths in MS drum packing.



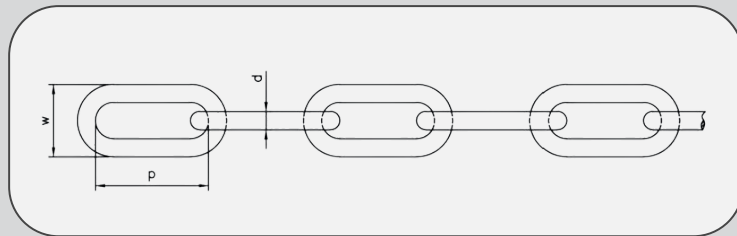
TECHNICAL DATA AS PER DIN 763

Nominal Size (d) (mm)	Preferred Pitch (mm) P	Preferred Outside width (mm) W	Test Load (KN)	Break Load (KN)	Safe Working Load (KG)	Approx Weight Per Mtr (KG)
5	35	20	3.15	10.00	160	0.43
6	42	24	4.50	14.00	224	0.63
7	49	28	6.00	18.00	300	0.86
8	52	32	8.00	25.00	400	1.10
9	59	36	10.50	32.00	530	1.41
10	65	40	12.50	40.00	630	1.75
11	72	44	15.80	47.50	790	2.11
12	78	48	18.80	66.50	940	2.55
13	82	52	21.20	63.00	1000	2.95
16	100	64	33.00	100.00	1600	4.45
18	113	70	42.30	127.00	2120	5.65
19	119	72	47.30	142.00	2370	6.25
20	120	75	50.00	160.00	2500	7.00
22	127	82	63.30	190.00	3170	8.55
25	140	88	81.70	245.00	4090	10.9

STAINLESS STEEL CHAIN

LIFTING CHAIN MADE FROM STAINLESS STEEL AISI 202 / 304 / 316 USED IN

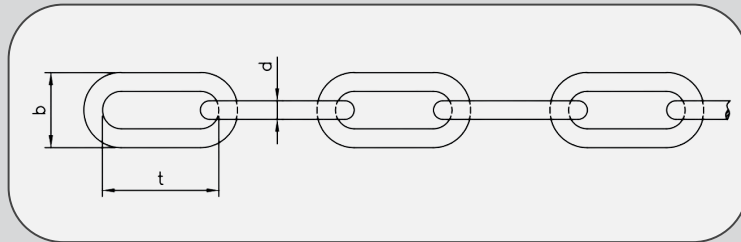
- Sea Water Application
- CPB's and Sling in Coastal Areas
- Chemical / Food Processing Plant
- Water Pumps & Sewage Pumps Applications
- Heat Resistance Applications.



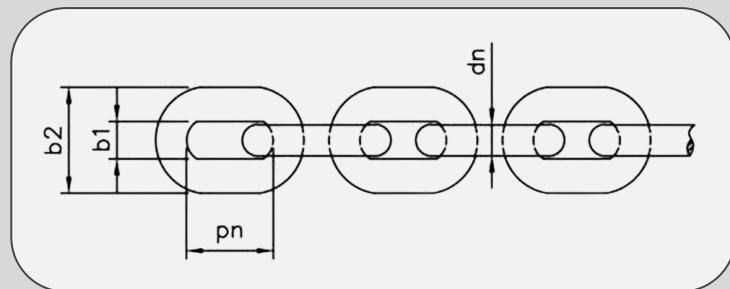
DIMENSIONAL AND MECHANICAL PROPERTIES AS PER IS:3109 (PART-II) -1982

Nominal Size (dn) (mm)	Diameter Tolerance (mm)	Preferred pitch (Inner Length) (mm) p	Pitch Tolerance (1 Link) (mm)	Preferred Outside Width (mm) w	Outside Width Tolerance		Proof Load (KN)	Minimum Breaking Load KN (mm)	Safe Working Load (Ton)	Approx Weight Per Mtr (KG)
					Away from Weld (mm)	At Weld (mm)				
6	+0.5 -0.36	18	0.35	20	+0.45	+1.0	11.4	22.8	0.57	0.75
7.1	+0.5 -0.43	21	0.41	23	+0.54	+1.2	15.9	31.8	0.80	1.1
8	+0.5 -0.48	24	0.46	26	+0.60	+1.4	20.2	40.4	1.00	1.4
9	+0.5 -0.54	27	0.52	30	+0.68	+1.5	25.5	51.0	1.25	1.75
10	+0.5 -0.60	30	0.58	33	+0.75	+1.7	31.5	63.0	1.60	2.15
11	+0.5 -0.66	33	0.64	36	+0.83	+1.8	38.1	76.2	1.90	2.7
12	+0.5 -0.72	36	0.69	39	+0.90	+2.0	45.3	90.6	2.30	3.15
14	+0.5 -0.84	42	0.81	46	+1.05	+2.4	63.0	126	3.20	4.1
16	+0.5 -0.96	48	0.93	51	+1.2	+2.7	81.0	162	4.00	5.5
18	± 0.90	54	1.04	59	+1.35	+3.0	102.0	204	5.00	7.2
20	± 1.0	60	1.16	65	+1.5	+3.4	126.0	252	6.30	8.8
22	± 1.1	66	1.26	72	+1.65	+3.7	155.0	310	8.00	10.5
25	± 1.25	75	1.43	82	+1.88	+4.3	197.0	394	10.00	13.8
28	± 1.4	84	1.62	91	+2.1	+4.8	247.0	494	12.50	17.5
32	± 1.6	96	1.85	104	+2.4	+5.4	322.0	644	16.00	22.5
36	± 1.9	108	1.90	117	+2.7	+6.1	408.0	816.0	20.00	28.5

LASHING - GRADE 40 & GRADE 80 USED FOR TRANSPORTING TRAILER'S & SHIPPING CONTAINERS



SPREADER CHAINS AS PER DIN 32895



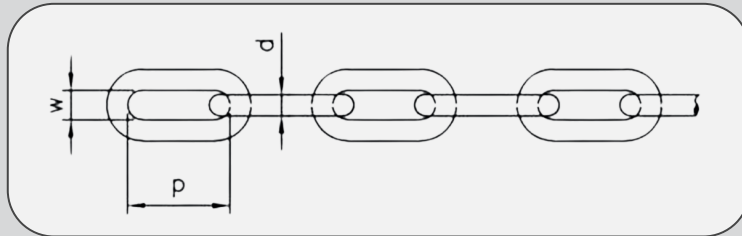
TECHNICAL DATA FOR ROUND STEEL GRADE 80 & GRADE 40 CHAIN FOR CARGO LASHING

Nominal Dia. Of Common link (d) (mm)	Pitch (t) (mm)	Outside Width (b) (mm)	Breaking Force KN (Grade 80)	Breaking Force KN (Grade 40)	Approx Weight Per Mtr (KG)	SWL For Grade 80 (Tons)	SWL For Grade 40 (Tons)
6	35	22	45	23	0.6	1.0	0.5
9	53	33	102	51	1.4	2.5	1.25
11	64	40	154	77	2.0	3.75	1.87
13	81.5	50	214	107	2.9	5.0	2.5

TECHNICAL DATA FOR SPREADER CHAINS AS PER DIN 32895

Nominal Size (dn) (mm)	Diameter tolerance (mm)	Preferred Pitch (Inner Length) pn (mm)	Pitch Tolerance (mm)	Inside Width b1 (mm)	Outside Width b2 (mm)	Proof Load (KN)	Minimum Breaking Load KN (min)	Tractive force (KN)	Approx Weight Per Mtr (KG)
8	± 0.3	31	+0.5 -0.3	10.4	28.0	45.0	71.0	18.0	1.3
9	± 0.4	31	+0.5 -0.3	11.7	31.5	56.0	90.0	22.4	1.7
10	± 0.4	31	+0.5 -0.3	12.5	34.0	71.0	112.0	28.0	2.2
10	± 0.4	35	+0.6 -0.3	12.5	34.0	71.0	112.0	28.0	2.1
11	± 0.4	35	+0.6 -0.3	13.8	37.4	85.0	132.0	33.5	2.7
12	± 0.5	36	+0.6 -0.3	15.0	40.8	100.0	160.0	40.0	3.2
13	± 0.5	45	+0.8 -0.3	16.3	44.2	118.0	190.0	47.5	3.5

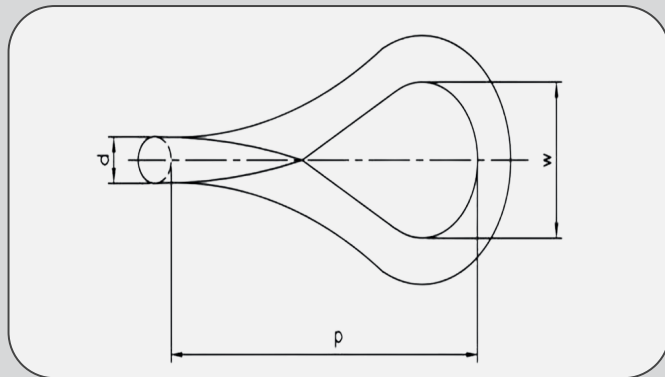
NON-SKID TYRE CHAIN - USED FOR VEHICLES IN SNOW TERRAIN AREAS, MILITARY VEHICLES, ETC.



DIMENSIONS

SIDE CHAIN

Diameter (d) (mm)	Diameter tolerance (mm)	Pitch (p) (mm)	Pitch Tolerance (mm)	Inside Width (w) (mm)	Inside width Tolerance (mm)
6	± 0.2	43	+0.3 - 0.15	10	+0 -1
10	± 0.2	49	+0.4 - 0.0	14	+0 -1



CROSS CHAIN (TWISTED)

Diameter (d) (mm)	Diameter tolerance (mm)	Pitch (p) (mm)	Inside Width (w) (mm)
8	± 0.2	30	10 (Max)
14	± 0.2	47.5	17.5 (Max)
8	± 0.2	35	13 (Max)
10	± 0.2	33	13 (Max)

COMPENSATING CHAINS WITH JUTE ROPE INLAID / PVC COATED

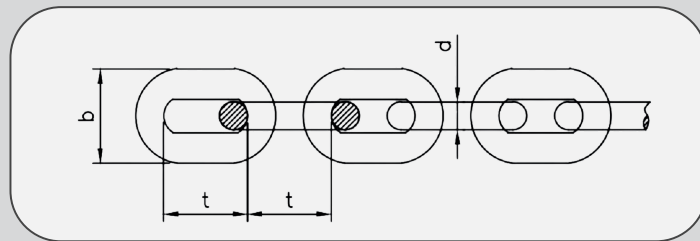
Grade 30 Link Chains, Zinc Electroplated with Jute Rope Inlaid Duly Oiled and Packed OR PVC Coated Option available

SPECIFICATION:

Material High Grade Mild Steel

Process of Manufacture Resistance Butt Welding,
Option 1 - Zinc Electroplated, Jute rope Inlaid Duly Oiled for absorption in rope.
Option 2 - PVC Coating and Baking

Delivery condition Chains are supplied in required lengths in MS drums / Wooden box packing.



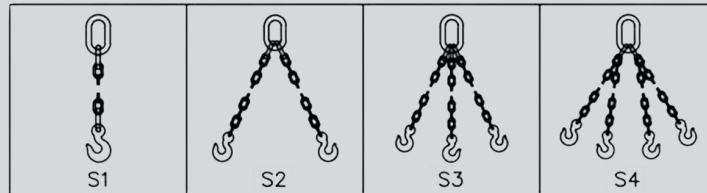
Diameter (d) mm	Pitch (t) mm	Width (b) mm	Working Load Limit (Tons)	Proof Load Test (KN)	Breaking Load (KN) Min	Approx Weight (Kgs/Mtr)
5	22.5	17.5	0.25	5.2	10.4	0.45
6.3	19	20	0.44	8.9	17.8	1.0
7.1	21	23	0.63	12.5	25.0	1.20
8	24	26	0.80	15.9	31.8	1.40
9	27	29	1.00	20.1	40.2	1.75
10	30	33	1.25	24.8	49.6	2.20
11	33	36	1.50	30.0	60.0	2.70
12	36	42	1.80	35.7	71.4	3.20
14	42	46	2.40	48.6	97.2	4.10
16	48	52	3.20	63.5	127.0	5.50

LIFTING – SHORT LINK CHAINS & CHAIN SLINGS

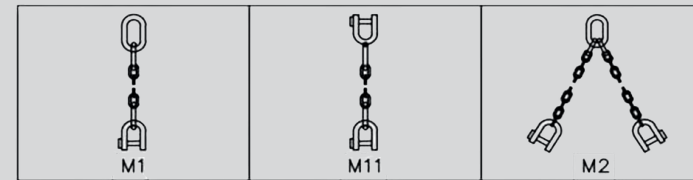
Alloy Steel Chain & Mild Steel Slings are used extensively for lifting purpose. We make all type of chain slings to suit various lifting applications. Lifting capacity of various types of slings indicated in the table below:

VARIOUS TYPES OF SLINGS TO MEET REQUIREMENT

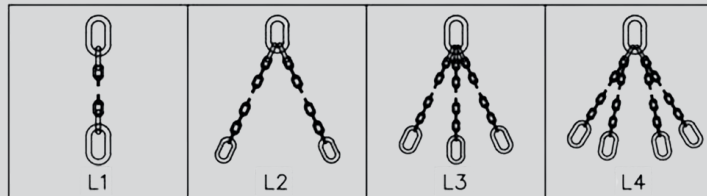
SLING WITH HOOK ENDS



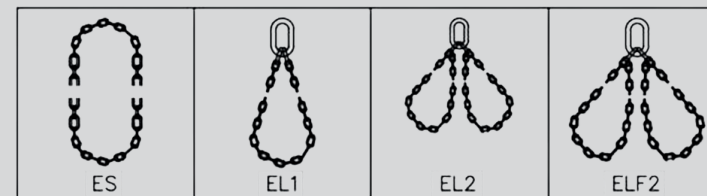
MISCELLANEOUS SLINGS



SLING WITH LINK END



SENDLESS & LOOP SLINGS



TECHNICAL DATA

S.NO.	CHAIN DIA mm	SINGLE LEGGED SLINGS SWL AT 0 DEGREE IN TONS				DOUBLE LEGGED SLINGS SWL AT 0 - 90 DGREE IN TONS				3 or 4 LEGGED SLINGS SWL AT 0- 90 DEGREE IN TONS			
		Gr - 30	Gr - 40	Gr - 63	Gr - 80	Gr - 30	Gr - 40	Gr - 63	Gr - 80	Gr - 30	Gr - 40	Gr - 63	Gr - 80
1	8	0.80	1.00	1.60	2.00	1.12	1.40	2.24	2.80	1.68	2.10	3.36	4.20
2	10	1.25	1.60	2.50	3.20	1.75	2.24	3.50	4.48	2.62	3.36	5.25	6.72
3	12	2.07	2.50	4.00	5.00	2.80	3.50	5.60	7.00	4.20	5.25	8.40	10.50
4	14	2.50	3.20	5.00	6.30	3.50	4.48	7.00	8.82	5.25	6.72	10.50	13.23
5	16	3.20	4.00	6.30	8.00	4.48	5.60	8.82	11.20	6.72	8.40	13.23	16.80
6	18	4.00	5.00	8.00	10.00	5.60	7.00	11.20	14.00	8.40	10.50	16.80	21.00
7	20	5.00	6.30	10.00	12.50	7.00	8.82	14.00	17.50	10.50	13.23	21.00	26.25
8	22	6.30	8.00	12.50	16.00	8.82	11.20	17.50	22.40	13.23	16.80	26.25	33.60
9	25	8.00	10.00	16.00	20.00	11.20	14.00	22.40	28.00	16.80	21.00	33.60	42.60
10	28	10.00	12.50	20.00	25.00	14.00	17.50	28.00	35.00	21.00	26.25	42.00	52.50
11	32	12.50	16.00	25.00	32.00	17.50	22.40	35.00	44.80	26.25	33.60	52.50	67.20



CONTACT DETAILS

🏠 S.No 343/5, Khamgaon Road, Shegaon 444203, Maharashtra, India

☎️ +91 9423144711, 9420497004, 9420497003

✉️ chains@shreeabhay.com

🌐 www.shreeabhay.com

