



COMPANY PROFILE

AAA SWITCH GEAR Private Limited

Approved By
Central Power Research Institute (CPRI),
Bhopal,
India



Panels Brochure





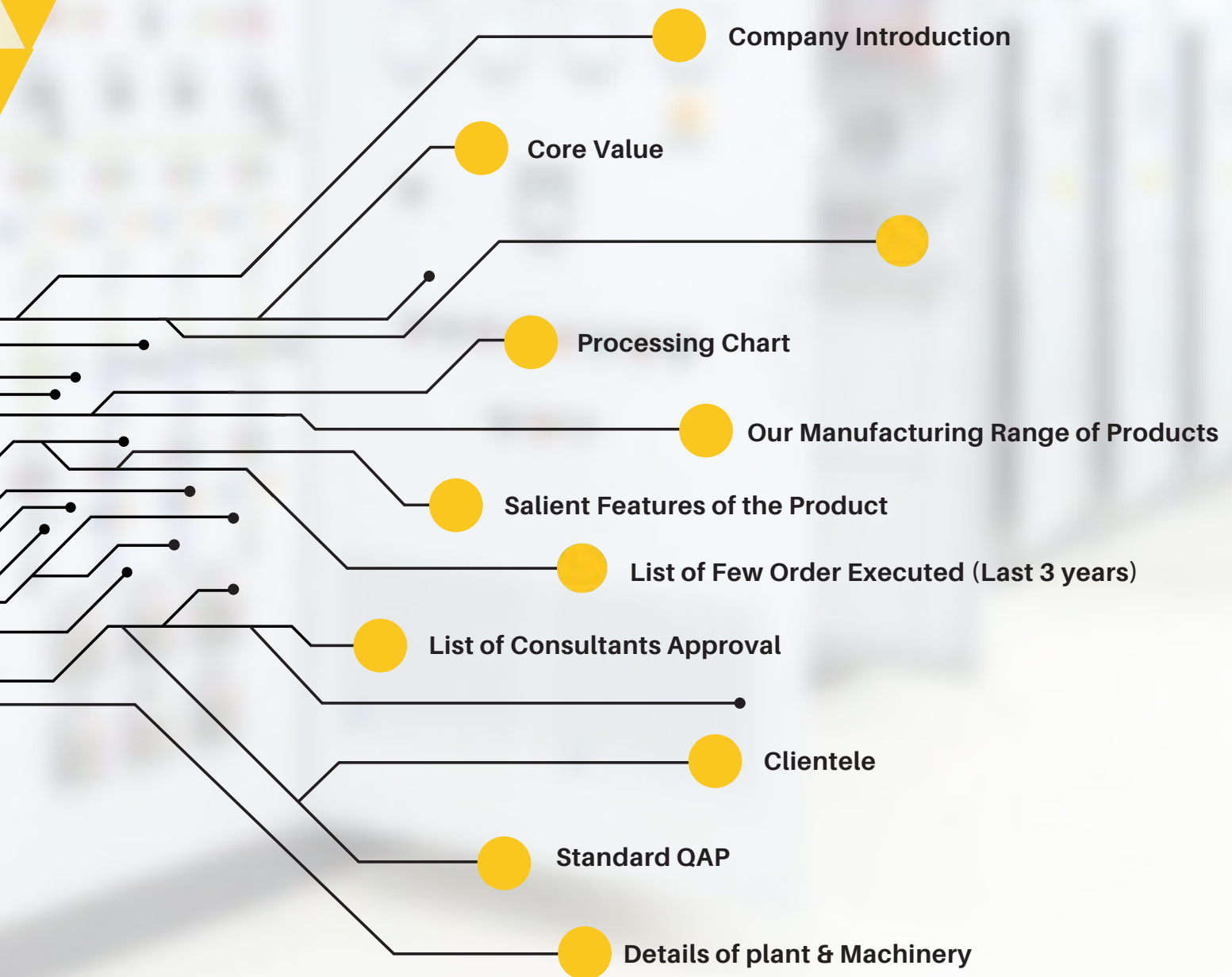
The background features a large yellow diagonal shape on the right side, which contains the text. Above this shape is a pattern of yellow and white triangles. To the left of the yellow shape, there are white circuit-like lines on a dark background.

“ Vision

Our target is to produce switchgear of exceptional quality, provide reliable solutions through the manufacture and supply of innovatively designed, cutting edge technology switchgear

”

Index of Enclosures



INTRODUCTION

ABOUT US

AAA Switch Gear Private Limited is an ISO 9001:2015 Certified Company involved in Offering Complete Electrical solutions that covers designing, supplying, installation, testing and commissioning of Electrical Projects and Panels. Performing with a commitment to excellence since 2012. The company has established itself as a paradigm of quality and perfection. Our Priority is to gain a thorough understanding of the business requirements of clients and efficiently deal with it.

TEAM

From management that leads by example to technocrats who inspire; from people working on machines to people manning our office, we have put together a cohesive workforce with a unity of purpose and sense of direction, following a common pathway to creating products we are proud of.

MANUFACTURING FACILITY

We have integrated manufacturing activities under one roof. We have a fiber glass moulding unit with mould design and fabrication of composites such as cable trays and raceways with varying fire resistance, chemical resistance and mechanical properties to satisfy varying specifications of each buyer.

DESIGN, RESEARCH & DEVELOPMENT

We offer custom design and development services to our customers for their requirements in cable trays, raceways, injection moulded components, sheet metal fabricated components. Customer centric and dedicated to giving each customer exactly what he needs, we aim to please through excellence.

SAFETY AND ENVIRONMENT CONCERNS

We have OHSAS 18001 : 2007 measures in place to ensure occupational health and safety of each person in our company, considering it as a compelling responsibility that contributes to their better performance. At the same time, on a macro level, safety of overall environment is also a guiding principle, reflected in the way we implement manufacturing processes to generate the least amount of greenhouse gases, pollutants and waste.

Core Values

Design customized, creative, efficient and cost-effective switch gear systems, engineered specially to cater for customer requirements, Manufacture under stringent quality control.

Acknowledged,
consistent quality of
products.

Continual improvement through
Training, Research, Development, Flexible
and open to new ideas and requirements.

Constantly monitor, innovate,
control and raise product quality
and thereby reliability.

Remain abreast of
technological progress and
improve efficiency and
functionality of products and
systems assembled.

Provide technical
solution, utilizing decades
of experience.

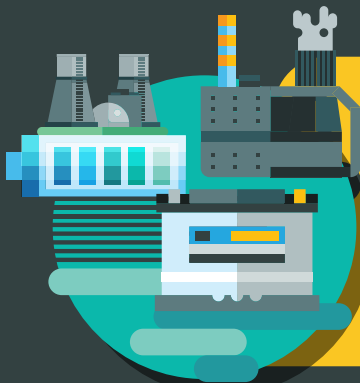
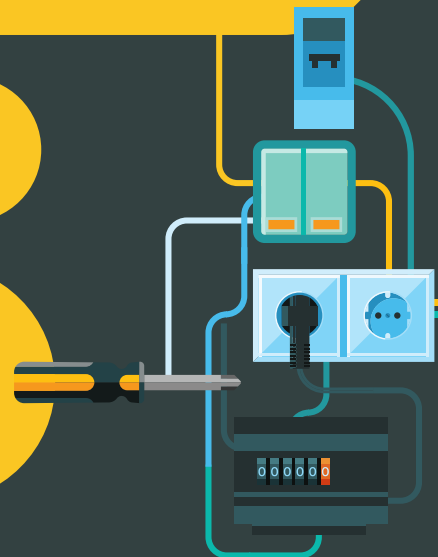
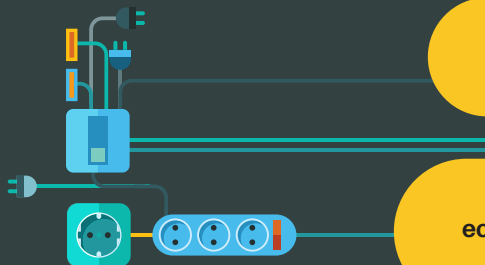
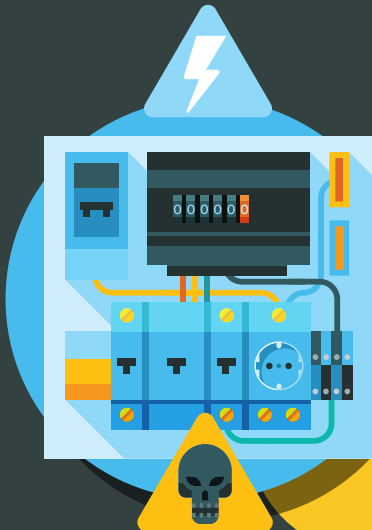
High functional serviceability,
economic efficiency, security and ecology
compatibility of products.

After Sales Service
and Support.

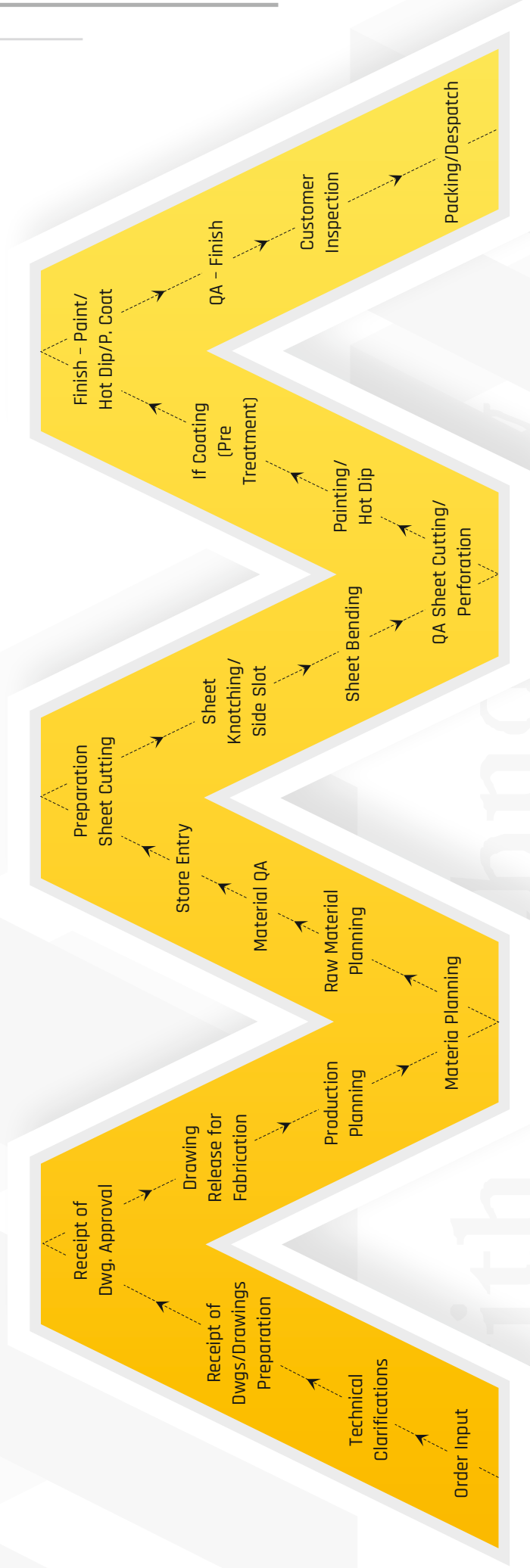
Customer Care,
Satisfaction & Loyalty.

Sustainability is an integral part of
production process, sales and on to
the application by customers.

Turned intentions into meaningful
actions that have shown success
over years through visionary leadership



Processing chart



Our manufacturing products

We are manufacturer and Supplier for all types of electrical Panels / L.T. Panels / Automation Panels Enclosures etc. Established in 2012 with an aim of providing technically sound and financially viable solutions for wide range of Automation and Machine manufacturing related products.

Starting from the day one we are trying to provide a high-quality panels and products to the customer or end user, as core line of our business is customer satisfaction in terms of our manufacturing range of products. We are trying to supply panels which meets our customers technical specification. We have been in the field of Manufacturing since 2012 and have an ISO 9001-2015, OHSAS 18001-2007 standard established and reputation of being a manufacturer of good quality products.

Our wide range of products are

01. Power Control Center (PCC)
02. Motor Control Centre (MCC)
03. Mains / DG synchronizing and load management
04. Automatic Power Factor Correction Panels (APFC)
05. Real Time Power Factor Correction (Thyristor - based) RTPFC Panels
06. AMF Control Panels (DG set)
07. Fire Panel
08. LMS Panel (Ltg. Panels)
09. ATS Panel (Automatic Transfer switch) Mains - Generator
10. ATS Panel (Mains - Mains)
11. Manual Transfer Switch Panel
12. Generator Control Panel
13. Annunciation Panel
14. DOL / Star - Delta Starter Panel
15. Local Distribution Boards (SDBs / MDBs / UMDBs / Ext.Ltg. DBs etc.)
16. Feeder Pillars (Outdoor / Indoor)
17. Temporary Boards with Plug & Socket (Outdoor / Indoor) upto IP :66 in Sheet Steel enclosures
18. Mobile Distribution Boards
19. Dedicated Earth Box
20. End feed units (ACB Based)
21. Adopter Box

Range of Products

LV Switchboards

Power Control Centre

Switchboard assemblies used for low voltage power distribution are mostly called Power Control Centres. These PCC controls, monitor & provide continuous supply to connected loads through breakers. If something goes wrong with the power source or load, the power control centre fitted with breakers cut down supply to the affected portion and the rest of the system stays healthy.



Motor Control Centre

Switchboard assemblies used for low voltage power distribution having a common power bus and principally containing motor control units are generally called motor control center (MCC). The Motor Control Centre takes care of controlling, monitoring & recording of the power supplied to motors.



Range of Products

LV Switchboards

Local Distribution Board

Switchboard assemblies used for low voltage power distribution that divides an electrical power feed into subsidiary circuits, while providing a protective fuse or circuit breaker for each circuit in a common enclosure.



Feeder Pillars

Switchboard assemblies that provides local isolation to electrical distribution equipment, protecting both the cabling and the transformer from faults. Feeder pillars allow simple and local maintenance to your equipment, reducing site downtime and reducing overall maintenance costs.

Range of Products

LV Switchboards

Mains / DG Synchronising & Load Management



Switchboard assemblies used for synchronising two or more DG into the system. When the DG is started and brought to operating voltage and frequency it needs to be paralleled at the right moment in order to be able to share the loads of the system.



Range of Products

LV Switchboards

APFC Panels

We manufacture and supply a qualitative range of APFC Panels, that are extensively used in various industries. These automatic power factor control panel (APFC) are designed and developed using advanced techniques and are capable of saving maximum power and energy. Fabricated using high-grade rust proof steel, our range is known for reliability and longer life. These APFC Panel are highly efficient an accurately monitor the reactive power in power systems for saving energy and can alter the system voltage as well as current. These panels are also provided with capacitors along with series reactors to minimize the harmonic current.



APPLICATION AREA

Electrical Installation • Windmills
Process Controllers • LT & HT
Factories • Micro Process



Range of Products

DG Set AMF (Auto Mains Failure) Panel

Automatic Mains Failure panels are installed as part of a automatic generator installation. The AMF is connected to the generator set to power control the operational functions. Once a power cut is detected, it automatically signals the generator to start and support the load. It will also start the generator if it detects that the mains power fluctuates. These are out of preset tolerances, instances for e.g., Power dips Once the generator is ready to accept the load, the motorized switches or contactors within the AMF Panel will switch the building load from mains supply to generator. This all happens automatically.



Range of Products

Fire Panel

A Fire Panel is the controlling component of a fire alarm system. The Panel receives information from devices designed to detect and report fires, monitors their operational integrity and provides for automatic control of equipment, and transmission of information necessary to prepare the facility for fire based on a predetermined sequence. The panel may also supply electrical energy to operate any associated initiating device, notification appliance, control, transmitter or relay.



Range of Products

LMS (Lighting Management System)

Product description

Touch panel for controlling the LMS WW DALI Interface IRD200 control unit. With integrated, battery buffered real time clock for control of a time-based (circadian) sequence of light color and brightness, as well as touch sensitive buttons for the manual setting of light and the flexible design of upto 4 lights scenes. Parallel switching of upto 3 operating panels. Demo mode with shortened circadian sequence. Function setting of the Push button or motion sensor and activation of the relay output on the IRD200 for avoidance of standby losses.



Some of our Enclosures with IP: 54 & 55 and IP: 65 & 66

Product description

ATS Enclosure with
IP :55 (Indoor)



DOL Starter Panel



STAR - DELTA CONTROL
PANEL



Temporary Board (outdoor type) with Plug & Socket IP:66



9 Tank Pretreatment Process

The company follows 9 tank processes for all its steel components. This process makes the aesthetics and strength of steel components long lasting, with varying weather conditions (internal or external). Listed below are the various processes followed.

- 1.Pre Degreasing
- 2.Degreasing
- 3.Water Rinse
- 4.De Rusting
- 5.Water Rinse
- 6.Activation
- 7.Phosphate
- 8.Water Rinse
9. Passivation



Salient features

01

CPRI / ERDA tested for 50 KA for 1 second upto 4000 A rating.

02

Enclosures manufactured of 2.0/1.6 mm CRCA sheet.

03

Fully bolted standardized design fabricated with CNC machines.

04

Panel construction with all possible forms of separation like-form 2/3a/3b/4a/4b.

05

CPRI / ERDA certified panels for degree of protection of IP42, IP52, IP54, IP55, & IP64, as per IEC 60529:2001.

Pre-Treatment with 9-Tank process.

06

Non Hygroscopic SMC DMC supports.

07

Standardized compartments for Busbar Chamber, Cables alloy & Feeders.

08

24 hours integrated customer supports and prompt offer sales service with repeated orders from customers and consultant.

09

200% back-up generator capacity.

10

List of Few Order Executed (Last 3 years)

Sl. No.	Client Name	Project	Panels Supplied	Year
1.	Supreme hospital	Charmwood Village, Surajkund Faridabad	DG Synchronizing Panel, L.T Panel, Distribution Board, UPS I/P & O/P Panels	2017-18
2.	Shardul Amarchand Mangaldas (SAMCO)	Okhla Phase III, New delhi	L.T Panels , SDBS,FDBS Panels	2018-19
3.	PVR Limited	Mumbai/Pune/Mohali/Delhi/Delhi/U.P/ Gurgaon/Chandigarh	L.T Panels , SDBS,FDBS Panels AHU,VFD Drive Panels	2018-19
4.	Syscom Corporation Ltd.	Nsez Noida Phase III (L-Block)	1600KVATIF,H.T Panel ,H.T Panels SDB'S & PDB's	2018-19
5.	Tata consultancy services	Pune	Main L.T Panels,VFD Panels ,SDB's Panels	2019-20
6.	Tata consultancy services	Olympus Mumbai	L.T Panels	2019-20
7.	Accenture Delhi	New Delhi	Main L.T Panels,UPS Panels	2018-19
8.	Ambuja Cement	Rajasthan	Main L.T Panels ,PCC Panels , PLC Panel, Ups Panels Etc	2018-19
9.	Indotag Solution Lts	Kasna, Greater Noida	MDB , SDB , UPS Input Panels	2018-19
10.	Nutech Contracts Pvt Ltd	Qualcomm Noida	L.T Panels , MDB's / SDB's Panels ,UPS Panels	2019-20
11.	Aarchee Contracts Pvt. Ltd.	GE Power , Noida	L.T Panels	2018-19
12.	Nutech Contracts Pvt Ltd	Sify Data Centre Noida	MDB's / SDB's Panels ,UPS Panels, L.T Panels	2019
13.	M/S EXL Noida (Illuminar	M/S EXL Noida	L&P Panel,MDB Server,UPS Panels, PDU's,AC Panel,SDB's , Server Panels ,Lightning Panels Engineering Pvt ltd)	2019-20
14.	Chetu India Pvt. Ltd.	Chetu Noida	Servo By pass + AMF Cum Capacitor Panel	2019-20
15.	Blue Angel Global School	Blue Angel School Surajkund	Main L.T Panels	2017-18
16.	Wipro Onyx	Gurgaon Cherry hills Interiors Pvt ltd	L.T SB Panels, Lightning Panels, MBD'S/PDB'S	2020
17.	Iron Mountain	Guwahati/Bilaspur Haryana / Lucknow	L.T Panels, Capacitor Panels , SBD'S / PDB'S	2018-20
18.	M/S Cairn Oil & Gas Vedanta Ltd.	Gurgaon	Critical Load Panels, UPS MDB, Server SDB, PDU's, Server MDB Panels	2019-20
19.	Hero Motor Corp.	Gurgaon	Main L.T Panels , UPS ATS Panels , UPS Input Panels , UPS Output Panel, Server UPS Panels	2018-19
20.	IOCL (Nutech Contracts Pvt Ltd)	IOCL Gurgaon	L.T Panels	2018-19
21.	Takenaka India Pvt Ltd	Yokohama Rajasthan	Main Panels,PLC-PDB Chillar, Pump Panels Dryer Panels	2017-18
22.	PWC	Kolkata, Gurgaon	Main L.Tb Panels, MDB, SDB, UPS I/P & O/P Panels	2017-18
23.	Ciena Gurgaon(Nutech Contracts Pvt ltd)	Ciena GGN	Floor Panels, Distribution Panels & Capacitor Panels	2018-19
24.	Ericsson	Noida , Lucknow , Mohali, kolkata	Main L.T Panels , MBD,SDB , UPS Panels	2018-19
25.	Royal Club(Eros Garden)	Eros garden Surajkund	L.T Panels, Server MBDs/SDBs,PDU's, UPS Panels	2018-19
26.	Hotel Leh Laddakh(ABDUZ)	Laddakh	Main L.T PLC Synchronizing Panels	208-19
27.	Woori Bank	Mumbai, Gurgaon	Main Panel	217-18
28.	HDFC Bank	Jaipur	Main L.T Panel , Floor Panels , Ups Panels	2020
29.	Guardian Tikri	Noida GGN	Main Panel , UPS I/P & O/P Panels	2017-18
30.	ONGC	Vadodara	L.T Panels	2018-19
31.	Popular Card	Nsez noida	L.T Panels	2018-19



List of Consultants Approval


- 1.) M/s Electro Consultant
- 2.) M/s Design Plus Consultant
- 3.) M/s Lakshay Consultant
- 4.) M/s Darshika Consultant P. Ltd.
- 5.) M/s Dhruva Engineering Consultant
- 6.) M/s Adroit Consultants
- 7.) M/s Ampower Consultancy Services
- 8.) M/s ECMS India Pvt. Ltd.
- 9.) M/s IBS Gulf Design Ltd
- 10.) M/S Arth Design Build India Pvt. Ltd.
- 11.) M/s Jay Consultant Engineers
- 12.) M/s Semac Consultants Pvt. Ltd.
- 13.) M/s Space Matrix Design Consultants Pvt. Ltd
- 14.) M/s AON Design Consultants
- 15.) M/s Lead Consultants and Services I Pvt. Ltd.


AAA SWITCH GEAR



Clientele



		MANUFACTURER'S NAME & ADDRESS			QUALITY ASSURANCE PLAN			Q.P. NO AAA/FEB./01			
		Project :- EXL, NOIDA			DATE :-			: 1 OF 5			
		Contractor :- M/S ILLUMINAR ENGINEERING PVT. LTD.			PAGE						
		Item :- MDBs, SDBs & COS PANELS									
		U.P.									
SL. No.	COMPONENT & OPERATION	CHARACTERISTICS	CLASS	TYPE OF CHECK	QUANTUM OF CHECK	REFERENCE DOCUMENT	ACCEPTANCE NORMS	FORMAT OF RECORD	AGENCY		REMARKS
INCOMING INSPECTION											
1	Sheet Steel	a. Make	Major	Visual	Sampling			Inspection Record / TC		V	
		b. Chemical Composition	Major	Measurement						V	
		c. Sheet Thickness	Major	Measurement						P	
		d. Waivyness	Major	Visual						V	
		e. Surface Finish	Major	Visual						P	
2	Bus Bar	a. Make	Major	Visual	Sampling			Inspection Record / TC		V	
		b. Cross Section	Major	Measurement						P	
		c. Surface Finish	Major	Visual						P	
		d. Conductivity	Major	Measurement						P	
3	MCCB/CHANGEOVER/ MCB/ELCB/RCBO	a. Make	Major	Visual	100%			Inspection Record		V	
		b. Type	Major	Visual						V	
		c. Rating	Major	Visual						V	
		d. No. of Poles	Major	Visual						V	
		e. KA Rating	Major	Visual						V	
		f. Manually On/Off	Major	Operation						P	
LEGEND :		Prepared By			Reviewed By			Approved By			
M:	AAA										
C:	CONSULTANT										
O:	OWNER / CLIENT										
P:	PERFORM										
V:	VERIFY										
W:	WITNESS										

MANUFACTURER'S NAME & ADDRESS		QUALITY ASSURANCE PLAN				Q.P. NO AAA/FEB./01				
		Project :- EXL, NOIDA		DATE :		: 2 OF 5				
		Contractor :- M/S ILLUMINAR ENGINEERING PVT. LTD		PAGE						
		Item :- MDBs, SDBs & COS PANELS								
		NOIDA 201305								
U.P.										
SL. No.	COMPONENT & OPERATION	CHARACTERISTICS	CLASS	TYPE OF CHECK	QUANTUM OF CHECK	REFERENCE DOCUMENT	ACCEPTANCE NORMS	FORMAT OF RECORD	AGENCY	REMARKS
INCOMING INSPECTION										
4	Wires	a. Make	Major	Visual	Sampling			Inspection Record / TC	V	
		b. Cross Section	Major	Measurement					P	
		c. Color	Major	Visual					V	
5	SMC / DMC Supports	a. Make	Major	Visual	Sampling			Inspection Record / TC	V	
		b. Dimensional Conformity	Major	Measurement					P	
		c. Surface Finish	Major	Visual					V	
		d. HV Test	Major	Electrical					P	
6	Indicating Lights	a. Make	Major	Visual	Sampling			Inspection Record	V	
		b. Color	Major	Visual					V	
		c. Rating	Major	Electrical					P	
		d. Type	Major	Visual					V	
7	Hardwares (Nut/Bolt/Washer/Gasket/Lock/Key, etc....)	a. Make	Major	Visual	Sampling			Inspection Record	R	
		b. Size	Major	Visual					P	
		c. Plating	Major	Visual					P	
		d. Surface Finish	Major	Visual					P	
8	Relays	a. Make	Major	Visual	100%			Inspection Record / TC	V	
		b. Rating	Major	Visual					P	
		c. Type	Major	Visual					V	
		d. Aux. Voltage	Major	Visual					V	
LEGEND :				Prepared By		Reviewed By		Approved By		
M: AAA										
C: CONSULTANT										
O: OWNER / CLIENT										
P: PERFORM										
V: VERIFY										
W: WITNESS										

MANUFACTURER'S NAME & ADDRESS		QUALITY ASSURANCE PLAN				Q.P. NO AAA/FEB./01				
		M/S AAA SWITCH GEAR (P) LTD.		Project :- EXL, Noida		DATE :				
		B-121, PH-II		Contractor :- M/S ILLUMINAR ENGINEERING PVT. LTD.						
		GAUTAM BUDDH NAGAR		Item :- MDBs, SDBs & COS PANELS		PAGE		: 3 OF 5		
		Noida 201305								
U.P.										
SL. No.	COMPONENT & OPERATION	CHARACTERISTICS	CLASS	TYPE OF CHECK	QUANTUM OF CHECK	REFERENCE DOCUMENT	ACCEPTANCE NORMS	FORMAT OF RECORD	AGENCY	REMARKS
PROCESS INSPECTION										
1	Mechanical Section	a. Sheet Thickness	Major	Measurement	100%	Approved Drawing	Approved Drawing	Inspection Record	P	
		b. Cut out sizes	Major	Measurement					P	
		c. Diagonal Conformity	Major	Measurement					P	
		d. Cut out finish	Major	Visual					P	
		e. Surface Finish	Major	Visual					P	
		f. Over all dimension	Major	Measurement					P	
		g. Arrangement for hinges	Major	Visual					P	
		h. Provision for door earthing	Major	Visual					P	
		i. Deburring	Major	Visual					P	
		2	Paint Section	a. Paint Shade					Major	Visual
b. Paint Thickness	Major			Measurement	P					
c. Adhesion Test	Major			Physical	P					
d. Flow of Paint (must not exist)	Major			Visual	P					
e. Surface Finish	Major			Visual	P					
f. Free from scratches	Major			Visual	P					
LEGEND :		Prepared By		Reviewed By		Approved By				
M: AAA										
C: CONSULTANT										
O: OWNER / CLIENT										
P: PERFORM										
V: VERIFY										
W: WITNESS										

		MANUFACTURER'S NAME & ADDRESS			QUALITY ASSURANCE PLAN			Q.P. NO AAA/FEB./01				
		Project :- EXL, Noida			DATE :			: 4 OF 5 REMARKS				
		Contractor :- M/S ILLUMINAR ENGINEERING PVT. LTD.			PAGE							
		Item :- MDBs, SDBs & COS PANELS										
		U.P.										
SL. No.	COMPONENT & OPERATION	CHARACTERISTICS	CLASS	TYPE OF CHECK	QUANTUM OF CHECK	REFERENCE DOCUMENT	ACCEPTANCE NORMS	FORMAT OF RECORD	AGENCY			
										M	C	O
FINAL INSPECTION												
1	Final Inspection	a. Bill of Material	Major	Visual	100%	Approved Drawing	Approved Drawing	Inspection Record	P	W	W	
		b. Overall Dimension	Major	Measurement					P	W	W	
		c. Paint Shade	Major	Visual					P	W	W	
		d. Paint Thickness	Major	Measurement					P	W	W	
		e. Paint Finish	Major	Visual					P	W	W	
		f. Adhesion Test	Major	Physical					P	W	W	
		g. Sheet Thickness	Major	Measurement					P	W	W	
		h. Busbar sizes for Phase & Neutral	Major	Measurement					P	W	W	
		i. Earth Busbar Size	Major	Measurement					P	W	W	
		j. Earthing symbols on ends	Major	Visual					P	W	W	
		K. Clamp for supporting customer cable in cable alley	Major	Visual					P	W	W	
		Major		Visual					P	W	W	
LEGEND :		Prepared By		Reviewed By		Approved By						
M: AAA												
C: CONSULTANT												
O: OWNER / CLIENT												
P: PERFORM												
V: VERIFY												
W: WITNESS												

MANUFACTURER'S NAME & ADDRESS		QUALITY ASSURANCE PLAN			Q.P. NO AAA/FEB./01						
M/S AAA SWITCH GEAR (P) LTD.		Project :- EXL, NOIDA			DATE :						
B-121, PH-II		Contractor :- M/S ILLUMINAR ENGINEERING PVT. LTD.			PAGE : 5 OF 5						
GAUTAM BUDDH NAGAR		Item :- MDBs, SDBs & COS PANELS									
NOIDA 201305											
U.P.											
SL. No.	COMPONENT & OPERATION	CHARACTERISTICS	CLASS	TYPE OF CHECK	QUANTUM OF CHECK	REFERENCE DOCUMENT	ACCEPTANCE NORMS	FORMAT OF RECORD	AGENCY	REMARKS	
									M	C	O
FINAL INSPECTION											
2	Final Inspection	m. Door Locks	Major	Visual	100%	Approved Drawing	Approved Drawing	Inspection Record	P	W	W
		n. Tightness for Busbars	Major	Test					P	W	W
		o. Nut bolts used of same size	Major	Visual					P	W	W
		p. Wiring sizes as per rating of the component	Major	Visual					P	W	W
		q. Description of inscription plates as per drg.	Major	Visual					P	W	W
		r. Danger Stickers	Major	Visual					P	W	W
		s. Shrouding of Live Terminals	Major	Visual					P	W	W
		t. Lifting Hook	Major	Visual					P	W	W
		u. Electrical testing as per schematic/single Line Diagram	Major	Test					P	W	W
		v. IR Test	Major	Test					P	W	W
w. HV Test	Major	Test	P	W	W						
LEGEND :		Prepared By			Reviewed By			Approved By			
M:	AAA										
C:	CONSULTANT										
O:	OWNER / CLIENT										
P:	PERFORM										
V:	VERIFY										
W:	WITNESS										

Details of plant & Machinery

SN	Machin Name	Make	Qty
1	Shearing Machine 3000x5mm	Hindustan Hydraulics	1 No.
2	Shearing Machine 2500 x 3mm	Haco	1 No.
3	Brake Press CNC 3000x100 Ton	Hindustan Hydraulics	1 No.
4	Brake Press CNC 2500x75 Ton	Haco	1 No.
5	Perforation Machin 1270mm	Jasco	1 No.
6	Busbar Bending / Cutting / Punching Machin	Anil Engineering	1 No.
7	Nibbling Machine 4 mm Capacity	Anil Engineering	1 No.
8	Hydraulic Angle + Flat Cutting Machine	Anil Engineering	1 No.
9	1" Pillar type Drill Machine 1 HP	Bosch	5 No.
10	1/2" Pillar Type Drill Machine ½HP	Bosch	5 No.
11	300 Amps. Welding Set	Electra	3 No.
12	400 Amps. Welding Set	Electra	2 No.
13	Mig Welding Machine 250/400Amp.	Panasonic	5 No.
14	Bench Grinder 1 HP	Bosch	2 No.
15	HS 7 Angle Grinder	Bosch	3 No.
16	HS 9 Angle Grinder	Bosch	2 No.
17	HS & Sander Grinder	Bosch	4 No.
18	Jigsaw Machine	Bosch	1 No.
19	6 mm Portable Drill Machine	Bosch	4 No.
20	12 mm Portable Drill Machine	Bosch	4 No.
21	25 mm Portable Drill Machine	Bosch	1 No.
22	4 mm Portable Grinder Machine	Bosch	2 No.
23	125 mm Portable Angle Grinder Machine	Bosch	1 No.
24	Hand Press no.6	Bosch	3 No.
25	50 Ton Power Press	Anil Engineering	5 No.
26	30 Ton Power Press 5 HP	Anil Engineering	8 No.
27	10 Ton Power Press 1 HP	Anil Engineering	1 No.
28	Spot Welding Machine	Electra	1 No.
29	Ferrule Printer		1 No.
30	Label Printer		2 No.
31	DG Set 125 KVA	Sudhir Genset	1 Set
32	Powder Coating plant	Umashankar Engineering	1 Set





THANK YOU

AAA SWITCH GEAR



AAA SWITCH GEAR PVT. LTD.

Registered Office and Plant:

Plot No. 121, Block - B, Phase - II,
Noida, District - G.B. Nagar (U.P.).

Contact us:

09811226830, 09911660854,
+91120 4323261, +91120
4323262

Email us:

info@aaaswitchgear.com
afsar.ahmed@aaaswitchgear.com