



NEW NATURAL GRANITES



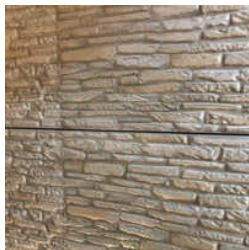
+919425081556

Supplier, Trader, Wholesaler
WALL TILES

Never Breaking Your Trust Is Our Speciality



10 mm Kajaria Wall Floor Tiles, 10mm Elevation Parking Wall Tiles, 15mm Galaxy Brown Vitronite Granite Slab, 15mm Vitronite Kajaria White Full Body Granite Slab, 15mm Vitronite Terrazo Brown Granite Slab, 16 mm Red Granite Stone, 18mm Ruby Red Granite Slab, 18mm Z Black Granite Stone, 20 Kg Kajaria White Tile Adhesive, 3D Ceramic Wall Tiles, Acrobaleno Decor, Alpi Gris Gold, Amethyst Rust, Apple Red Granite Stone, Beige Elevation Wall Tiles, etc.



CERAMIC ELEVATION WALL TILES



KAJARIA MAPPLE LEAF WALL TILES



**KAJARIA ELEVATION PARKING
WALL TILES**





About Us

Our company, New Natural Granites, specialises in the delivery of premium-quality tiles, adhesives, and similar products. We are known in the market as one of the leading suppliers, traders, and wholesalers of similar items. Our product range includes items like Ceramic Elevation Wall Tiles, Kajaria Natural Mosaic Wall Tiles, Crema Classic Granite Stone, Full Body Vitronite White Granite Slab, Premium Elevation Special Tile Adhesive, and more. These products are widely used in the construction and interior decoration businesses. We obtain these products from trusted and reliable manufacturers. All the procured products go through a series of quality assurance tests to make sure their quality is on par with international standards. Our products are highly appreciated by our clients for their durability, robust construction, and hardness. Our product range includes a variety of products that are available in various designs and shapes, thus enabling us to cater to the requirements of a larger audience. Moreover, we have kept the prices of these products as low as possible so that we can reach a wider audience.

The infrastructure of our company helps us fulfill all the commitments we have made to our clients. We have systemically divided IT into various departments, which helps us ease our work and increase productivity. We have a well-functioning testing facility, which helps us make sure that the quality of our offered products is impeccable. Moreover, we are supported by our capacious warehouse area, which is stretched over a large area of land. It is systemically divided into various shelves according to the product. It helps us maintain our inventory and cater to the bulk and urgent requirements of our customers.

We are an expert supplier of quality products, including Crema Classic Granite Stone, Ceramic Elevation Wall Tiles, Kajaria Natural Mosaic Wall Tiles, Full Body Vitronite White Granite Slab, Premium Elevation Special Tile Adhesive, and more.





Key Facts

No of Staff	11
Year of Establishment	1993
OEM Service Provided	No

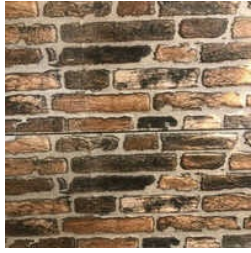




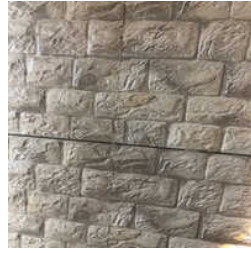
Our Products



**Gloss Finish Elevation
Parking Wall Tiles**



**Ceramic Elevation Wall
Tiles**



**Kajaria Natural Mosaic
Wall Tiles**



**High Glossy Double
Charge Wall Tiles**



**Kajaria Elevation Wall
Tiles**



**Kajaria Mapple Leaf
Plainl Wall Tiles**



**10mm Elevation
Parking Wall Tiles**



**Beige Elevation Wall
Tiles**



**Kajaria Ceramic
Mosaic Elevation Wall**



**Natural Mosaic
Elevation Parking Wall**



**Kajaria Elevation Wall
Tiles**



**Kajaria Porcelain
Mosaic Elevation Wall**



**Kajaria Carving Wall
Tiles**



**Ceramic Mosaic Wall
Tiles**



**Dark Grey Wall
Elevation Tiles**



Elevation Wall Tiles





NEW NATURAL GRANITES



+919425081556



ADDRESS

**27 T S, Shop 04, Scheme No 31,
Agrasen Chauraha, Indore,
Madhya Pradesh, India
(452001).**



EMAIL

newnaturalgranite@gmail.com



MOBILE

+919425081556



WEBSITE

www.newnaturalgranites.com

KEY PERSONNEL

Vivek Jain

(PROPRIETOR)

DESIGNED AND
DEVELOPED BY

**trade
india.**