



**FULLY-AUTO CHEMISTRY ANALYZER**

**ADX-AUTOCHEM-200**



[www.rajbiosis.com](http://www.rajbiosis.com)  
+91-998-3333-469





## FULLY-AUTO CHEMISTRY ANALYZER

### ADX-AUTOCHEM-200

- Constant 200 test/ hour with double reagent
- 80 reagent positions
- Automatic liquid level sensing, anti-collision protection.
- Integrated full closed optical system, multi wavelength simultaneous detection.
- New amorphous optical plastics reaction cups, perfect transmittance.
- Maintenance free semiconductor solid state refrigeration
- Friendly surface and easy to operation



[www.rajbiosis.com](http://www.rajbiosis.com)  
+91-998-3333-469

## Multifunctional precision sampling probe

- External & internal mirror polish, external & internal probe washing
- Dedicated sampling probe equipped with sensitive liquid sensor, timely feedback of reagent & sample residuals
- Collision protection, automatic probe depth adjusting



## Excellent mixer design

- Teflon coating mixer. No water dropping (reducing carry-over)
- Excellent mixing effect with standard mixing procedure



## High precision ceramic syringe

- Permanent ceramic piston
- Accurate dispensing as low as 0.1  $\mu$ l



## Reagent & sample tray

- 80 reagent positions (40 for R1, 40 for R2)
- 40 sample positions, micro cup & test tube can be used
- Non-stop cooling system with peltier pad inside, 24 hours 2°C -14°C
- Bar code reader(optional)



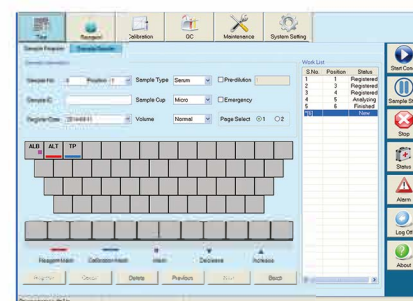
## Reaction tray

- 44 reaction cuvettes
- Reaction volume as low as 150  $\mu$ l
- Stable & accurate temperature(37 $\pm$ 0.1 °C) for reaction



## Advanced operating system

- User friendly software interface simple, easy-to-operation
- Sample automatic dilution(decrease, increase, normal)
- Reaction result automatic checking and warning, calibration result automatic checking, warning alarm log
- Linear & nonlinear calibration, Multi-points calibration up to 8 points
- Quality control apply to westgard, L-T plot, cumulative



## Technical specifications

### General information

Machine type	Random access, open reagent & locked reagent (optional)
Test speed	Constant 200 tests/hour (Mono reagent or double reagent)
Test principle	Colorimetric method, turbidimetry
Test method	1 point end, 2 point end, Fixed-Time, Kinetics
Calibration type	Linear & nonlinear

### Sample unit

Sample tray	40 sample positions
Sample tube	Micro cup & test tube & blood collection tube can be used. ( $\Phi$ 12 -13 )mm * ( 25 – 100 )mm
Sample volume	2-30 $\mu$ L, step by 0.1 $\mu$ L
Sample probe	Liquid surface detection, timely tracking for liquid volume. Collision avoidance
Sample barcode	Sample barcode reader (optional)

### Reagent unit

Reagent tray	80 reagent positions (40 for R1 & 40 for R2), Non-stop cooling system with peltier pad inside, 24 hours 2°C -14°C, open system, could accept any reagent.
Reagent volume	20-300 $\mu$ L, step by 1 $\mu$ L
Reagent needle	Liquid surface detection, timely tracking for liquid volume. Collision avoidance.
Reagent barcode	Reagent barcode reader (optional)

### Reaction unit

Reaction tray	44 reaction cuvettes, new amorphous optical plastics reaction cups, perfect transmittance.
Reaction volume	150 $\mu$ L-330 $\mu$ L
Reaction time	10 minutes
Temperature	Peltier pad incubation system, reaction temperature (37°C $\pm$ 0.1 °C)

### Mixing system

Mixer	paddle-type mixing, effective reducing of carry-over
-------	--

### Optical system

Light source	Halogen lamp
Wavelength	340nm; 405nm; 450nm; 505nm; 546nm; 578nm; 630nm; 700nm(4 more options)
Absorbance range	0-4.0 Abs
Resolution	0.0001 Abs

### Operating system

Operation system	Windows XP, Windows 7, Windows 8, Windows 10
Data processing	Automatic calibration, test combination, effective time management of reagents, serum index, whole process detection, linear expansion of enzyme, blank deduction, dirty cuvette memory, cross infection prevention, patient information memory and association input, automatic report audit, data fuzzy query, report statistics and printing, reference range grading, alarm information classification, user operation privilege classification management.
Report printing	6 formats optional, support custom pattern
interface	TCP/IP network interface

### Working conditions

Power supply	AC 110/220V $\pm$ 10%, 50/60 Hz, 650W
Water consumption	8L/hour(maximum)
Dimension	780mm * 565mm * 1120mm(L*W*H)
Weight	140kg



# System Pack kits for fully automated analyser

ADX10SP	Glucose Test Kit €€	4 x 180 T
ADX11SP	Cholesterol Test Kit €€	4 x 180 T
ADX15SP	Triglycerides Test Kit €€	4 x 180 T
ADX27SP	Albumin Test Kit €€	4 x 180 T
ADX28SP	Total Proteins Test Kit €€	4 x 180 T
ADX26SP	Alpha Amylase Test Kit €€	4 x 65 T
ADX20SP	Alkaline Phosphatase Test Kit €€	4 x 65 T
ADX22SP	AST (SGOT) Test Kit €€	2 x 225 T
ADX21SP	ALT (SGPT) Test Kit €€	2 x 225 T
ADX16SP	Bilirubin - Total Test Kit €€	2 x 225 T
ADX17SP	Bilirubin - Direct Test Kit €€	2 x 225 T
ADX13SP	Creatinine - 2R Test Kit €€	2 x 225 T
ADX12SP	Creatinine - SR Test Kit €€	4 x 180 T
ADX32SP	DHDL Cholesterol Test Kit €€	2 x 150 T
ADX33SP	DLDL Cholesterol Test Kit €€	2 x 200 T
ADX25SP	Uric Acid Test Kit €€	4 x 65 T
ADX23SP	Urea Kinetic Test Kit €€	2 x 225 T
ADX34SP	CKNAC Test Kit €€	2 x 100 T
ADX35SP	CKMB Test Kit €€	2 x 100 T
ADX19SP	GGT Test Kit €€	2 x 100 T
ADX38SP	Lipase Test Kit €€	2 x 100 T
ADX29SP	Calcium Test Kit €€	4 x 65 T
ADX30SP	Chloride Test Kit €€	4 x 65 T
ADX36SP	Potassium Test Kit €€	4 x 65 T
ADX37SP	Sodium Test Kit €€	4 x 65 T
ADX42SP	In. Phosphorus Test Kit €€	4 x 65 T
ADX43SP	Magnesium Test Kit €€	4 x 65 T
ADX90SP	ASO Test Kit €€	2 x 100 T
ADX91SP	CRP Test Kit €€	2 x 100 T
ADX92SP	RF/RA Test Kit €€	2 x 100 T
ADX93SP	Micro Albumin Test Kit €€	2 x 100 T
ADX94SP	HbA1c Test Kit €€	2 x 100 T



Call +91 9143000255/ email - swastikaventures@yahoo.com

Module No. 407 & 408, 4<sup>th</sup> Floor, TICEL Bio Park II, No. 5, CSIR Road  
Taramani, Chennai - 600113, INDIA