

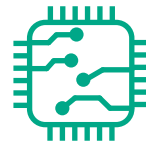


[www.rajbiosis.com](http://www.rajbiosis.com)

## Analyzer With Advanced Features



Larger 7inch Touch  
Screen Display



Advanced High  
Speed CPU Processor



Best in Class Memory  
Storage Capacity for  
Sample Results  
(up to 2,00,000)



Greater Photometric  
Absorbance Range  
upto 4.0Abs

## Specification:

Linear Measuring Range :	0 to 4.0Abs
Light Source :	Tungsten Lamp with lamp saver feature
Standard Wavelength :	340,405,450,505,546,578, 630 nm. 2 more for optional
Modes :	End-point, Two-point, Kinetic, Multi-point, Factor
Test Menu :	300 open programmable test option
Illuminated volume of Flow Cell :	32 $\mu$ L
Printer :	Thermal Printer
Display :	7 inches LCD touch screen
Storage :	2,00,000 Result
Interface :	4 USB Hosts, 1USB Slave, 1 Ethernet port.
Power Requirement :	100 ~ 240VAC; 50/60Hz
Dimensions :	400mm (L) x 300mm (W) x 160mm (H)

## Stay ahead with wider Test menu

### Lipid / Cardiac Profile:

Cholesterol  
 HDL Direct  
 LDL Direct  
 Triglycerides  
 CK MB & CM Total  
 LDH  
 Ultra Sensitive CRP

### Renal Profile:

Urea  
 Creatinine  
 Uric Acid

### Minerals:

Calcium  
 Chloride  
 Magnesium  
 Phosphorus

### Diabetic Profile:

Glucose  
 HbA1c  
 Microalbumin urea

### Liver Function Test:

SGOT  
 SGPT  
 Biliubin Total & Direct  
 Albumin  
 Protein  
 GGT

### Immuno Turbidimetry:

ASO  
 CRP  
 RA Factor

### Other Enzymes:

Acid Phosphatase  
 Alkaline Phosphatase  
 Amylase  
 Lipase

[rajbiosis@yahoo.in](mailto:rajbiosis@yahoo.in)

And Many More....