

## TECH CORAL SOLUTIONS

A promise to offer products with higher quality standards.



Mild Steel Hand Railing | Hy Rib Sheet | Hot Dipped Puddle Flanges

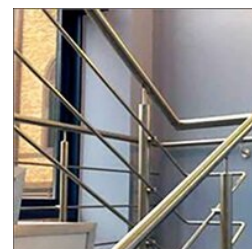
Aluminium Cable Tray, Aluminium Ceiling Works, Aluminium Partition Works, Column Formwork, Column shutter, Fencing Works, Fire Resistant Ceiling, Fire Resistant Partition, Flexseal Puddle Flanges, Galvanized Grating, Galvanized Steel Cable Tray, Gypsum Ceilings, Gypsum Partition, Hot Dip Galvanized Grating, Hot Dipped Puddle Flanges, etc.



FENCING WORKS



WOODEN HAND RAILING



STAINLESS STEEL HAND RAILING

## About Us

TECH CORAL SOLUTIONS is a New Delhi based company, serving the needs of numerous buyers with premium quality Flanges like SS Flanges, MS Flanges, Windows, etc. Since the inception in 2010, we are offering a comprehensive product array packed with unmatched quality features at great market price. Our company is known to be a noted Exporter, Manufacturer, Wholesaler/Distributor, Supplier and Trader, specialized in engineering industrial products as per latest market demands and international standards.

We, TECH CORAL SOLUTIONS, is a Partnership firm operating from New Delhi, India. Since the establishment in 2010, we have been meeting the needs of market with precision products. We are counted among the reputed Exporters, Manufacturers, Wholesaler/Distributors, Suppliers and Traders, committed to assure best of quality and great prices. The comprehensive range comprises Hy Rib Sheet, Grating, Lintel, Hand Railing, Corner Bead, Puddle Flange, Cable Tray, Fencing, Windows, and more. All the products are in compliance with global standards. Apart from this, we are also a reliable Service Provider engaged in undertaking Ceiling Works, Door & Window Fabrication, Fencing Works, Fire Rated Works, Glass Work, and other job works.

## Key Facts

<b>Nature of Business</b>	Manufacturer
<b>Primary Competitive Advantages</b>	I-Bracket for lintel,lintel bracket,lintel accessories,powder coated lintels,coated lintels,designed lintels,stainless steel lintels,metal lintals,lintels,steel lintels
<b>No of Staff</b>	15
<b>Year of Establishment</b>	2010
<b>No of Production Lines</b>	1
<b>OEM Service Provided</b>	Yes
<b>Memberships</b>	MSME
<b>ProductRange</b>	I-Bracket for lintel,lintel bracket,lintel accessories,powder coated lintels,coated lintels,designed lintels,stainless steel lintels,metal lintals,lintels,steel lintels

## Our Products



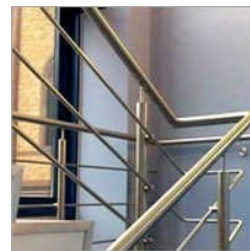
**Square And Rectangular Column**



**Mild Steel Grating**



**Stainless Steel Flanges**



**Stainless Steel Railing**



**Mild Steel Hand Railing**



**Stair Hand Railings**



**Mild Steel Railing**



**SS Grating**



**Column Formwork**



**Column Shutter**



**Puddle Flanges**



**Mild Steel Flange**



**HyRib Sheet**



**Hy Rib Sheet**



**Hy Rib**



**Mild Steel Flanges**





ADDRESS

Plot No. 12, Kh. No. 155, Village  
Pooth Khurd, Bawana, Delhi,  
Delhi, India (110039).



EMAIL

[vvg@techcoral.co.in](mailto:vvg@techcoral.co.in)



MOBILE

+919811842838



WEBSITE

[www.techcoralsolutions.com](http://www.techcoralsolutions.com)

KEY PERSONNEL

**Vir Vikram Gupta**

(PARTNER)