



An
Innovative
Trendsetter

A Trusted Place For
Faith of Quality

Profile

JETCOTECH is a Manufacturer, Supplier & Exporter with a dominant presence in Cable Trays, Lighting Poles, High mast Pole, Earthing Solutions, Solar Structures & Hot Dip Galvanizing. Led by JETCO group, the company's enviable success story has been scripted essentially by its resolve to innovate, set new standards, enhance capabilities, enrich lives and to ensure that it stays true to its cherished value system.

Jetcotech is trying build up our company on the rock of faith in today's competitive market. We cordially expect your kind co-operation in achieving our milestone. We dedicate ourselves in supplying wide range of Products from one stop.

Our main target is to catering best quality products to our esteemed customers in the field of Industrial, Infra and commercial by way of providing solutions in Cable Management. We are fired up by the passion to push the limits of Engineering Products like, Cable trays, Lighting Poles, Mast Poles and Galvanizing of any type of metals. Our technical team consists of trained & motivated engineers & technician to cater all sorts of before & after sales backup.

Jetcotech is with a culture of excellence and orientation toward s growth, the company is positioned to win the future. Jetcotech is proactive, progressive and has been steadily improving its competitive advantage.

We are well known in the market with our existing business of Electrical Panels Manufacturing with 100% in house facilities knows as JETCO INDUSTRIES since 2009.



SAFE

Environment, Health and Safety Issues are priority areas at Jetcotech. In keeping with pollution control and carbon emission standards we have taken up appropriate initiatives and are pursuing alternatives to implement a green policy.



STRENGTH

Jetcotech will try to meet the divergent needs of clients & delight them by systematically supplying a rapid response to their need. The above shall be achieved by launching a Quality Management Systems through participation of our entire team & vendors. It shall be our endeavor to continually improve the quality of our services and products to match the best & latest in the industry & infra.



SPEED

Each phase of design, fabrication and delivery is planned and seamlessly carried out to ensure that customers receive the highest quality products.

To ensure that Jetcotech products reach you on time strategically located Jetcotech regional distribution centers delivery to every state and job site in the subcontinent, quickly and efficiently.



RANGE OF LIGHTING POLE

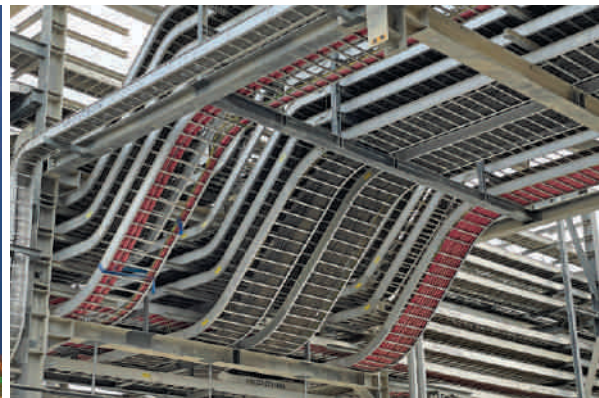
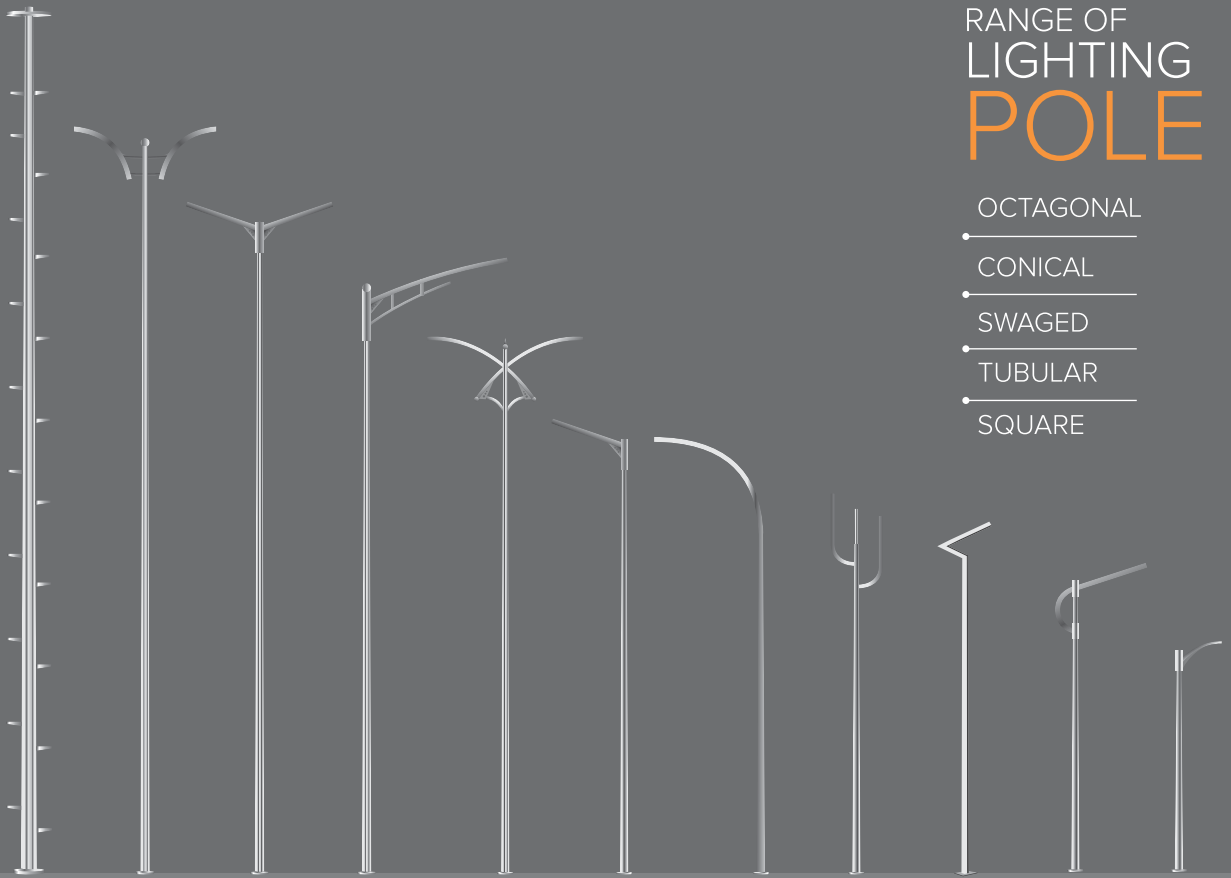
OCTAGONAL

CONICAL

SWAGED

TUBULAR

SQUARE



TOTAL
**ELECTRICAL PANEL
SOLUTION**
FOR ANY
APPLICATION

www.jetcoindustries.in



ALL KIND OF
**CABLE MANAGEMENT &
LIGHTING / MAST POLE**
MANUFACTURER, SUPPLIER
& EXPORTER

www.jetcotech.in



JETCO OVERSEAS EXPORTS
COMPLETE SOURCING
SOLUTIONS TO
**BUILDING AND
INDUSTRIAL PROJECT
MATERIALS** TO ACROSS
THE GLOBE

www.jetcooverseas.com

The Innovative

PRODUCT RANGE



LIGHTING POLE

Octagonal | Conical | Swaged
Square | Tubular | Decorative

High Mast | Stadium Mast
Flag Mast | Signage Mast | Mono Pole

MAST POLE



CABLE TRAY

Perforated | Ladder | Wiremesh
Raceway | Embossed Cable Tray

Earthing Material | LED Lights
Hotdip Galvanised Service | Solar Structure

CABLE
TRAY

PERFORATED
CABLE TRAY

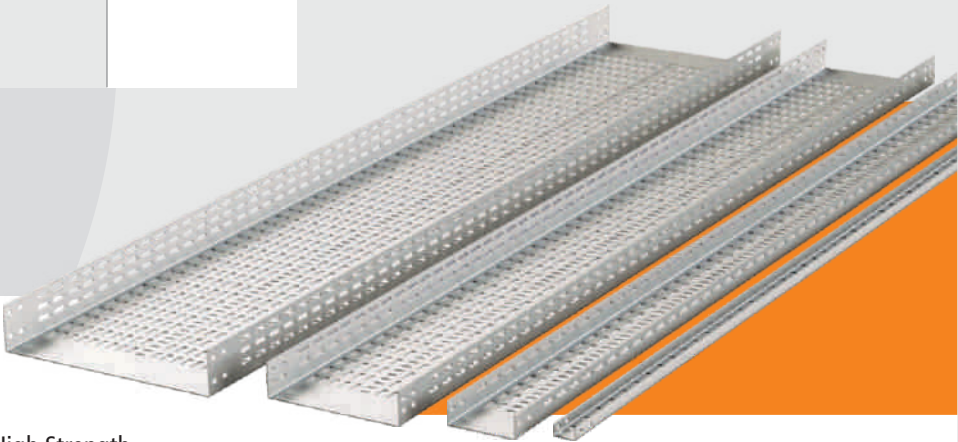
We are pleased to introduce ourselves as one of the leading manufacturer, supplier and exporter of Perforated Cable Tray with optimum quality. Our provided cable trays are highly acclaimed in the market for supporting different types of insulated cables. Further, these cable trays are manufactured using quality approved raw material and progressive technology in the supervision of our skilled professionals. Owing to their various quality attributes, these trays are widely accepted by our clients. We full feel requirement for various segments like Industrial, Infra, Mega Projects, Urban, Commercial & Residential etc. Perforated cable trays made & finished with as per standards, which are full feels all specifications as per costumers needs and used internal as well external too.

Product Range :

Width (W) mm	Height (H) mm	Thickness (T) mm	Length (L) mm
50	25/35/50	1.2/1.5/1.6/2	2500/3000
100			
150			
200			
250			
300	25/35/50/ 75/100	1.5/1.6/2/2.5/3	
350			
400			
450			
500			
550			
600			



Flange Type :
U Type, Inside Edge, Outside Edge
Heavy Duty Return Flange



Features :

- | Maximizes ventilation

| Easy Installation

| Corrosion Resistance

| Rigid Structure

| High Capacity
- | High Strength

| Superior quality

| Precisely Designed with cover and without cover

| Suitable for all applications and environments including marine environments and chemical processing factories.

Raw Material	Mild Steel, Pre-Galvanized, Stainless Steel 304, Stainless Steel 316.
Finished	Hot Dip Galvanized (As per IS), Pre-Galvanized, Powder Coated, SS 304, SS 316

Note : Above all sizes are standard, Tailor-made sizes can be manufactured

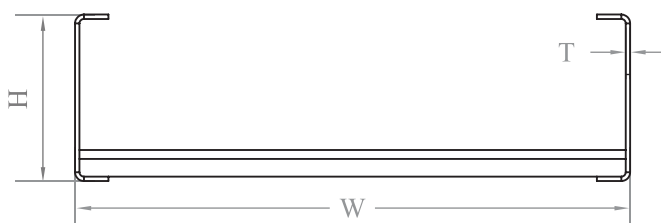
Owing to our state-of-art manufacturing unit and the usage of leading-edge technology, we are able to present a comprehensive range of Straight Run Ladder Cable Tray that is used in various industries. We offers ladder cable tray with complete accessories for smooth and fast installation. Keeping in mind the latest market development. Besides this, our quality experts test this cable tray to ensure its quality. We are able to providing Ladder Cable Tray system as per IEC 61537 with compatible all specification and standards.

Product Range :

Width (W) mm	Height (H) mm	Thickness (T) mm	Length (L) mm
150	50/75/100/150	1.5/1.6/2/2.5/3	2500/3000
200			
250			
300			
350			
400			
450			
500			
550			
600			
650	75/100/150	1.6/2/2.5/3	2500/3000
700			
750			
800			
900			
1000			
1200			
1500			
		2/2.5/3	

RUNG & RUNNER DIMENSION

		THICKNESS	CTC
RUNG	30X12X12	1.5/1.6/2	250/300
RUNNER	HX15X15		
RUNG	35X15X15	2.5/3	250/300
RUNNER	HX20X20		



LADDER CABLE TRAY

CABLE TRAY

Features :

- | All designs permit easy cable dropout with no sharp edges to damage insulation.
- | Slotted C-Channel rungs allow simple cable fastening.
- | High strength splices allow random locations between supports
- | Superior quality
- | Complete line of fittings and accessories

Raw Material

Mild Steel, Pre-Galvanized, Stainless Steel 304, Stainless Steel 316.

Finished

Hot Dip Galvanized (As per IS), Pre-Galvanized, Powder Coated, SS 304, SS 316

Note : Above all sizes are standard, Tailor-made sizes can be manufactured

Creating a niche of Wire Mesh Cable Tray and Cable Tray Accessories at its best, with utmost quality.

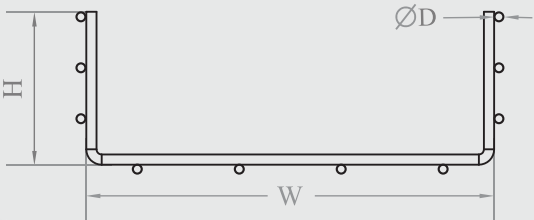
Wire Mesh Cable Tray systems enable fast and simple connections with limited need for tools. Its design allows continuous airflow, and prevents the buildup of dust, contaminants and bacterial proliferation. Strong, flexible, and adaptable, our Wire Mesh Cable Trays come in a full range of sizes and is made with high-strength welded steel wires. Support accessories for any application or situation are available. Wire Mesh Cable Tray is produced by first welding a net, forming the channel and then finishing after fabrication. Commonly used for Telecoms, IT, Food Industries, Other Industrial Control & Power Cabling Managements.

CABLE TRAY

WIRE MESH CABLE TRAY

Product Range :

Width (W) mm	Height (H) mm	Wire Gauge (D) mm	Length (L) mm
50	25/50/75/100	3/4/5	2500
100			
150			
200	50/75/100	4/5/6	
300			
400			
500			
600			



Features :

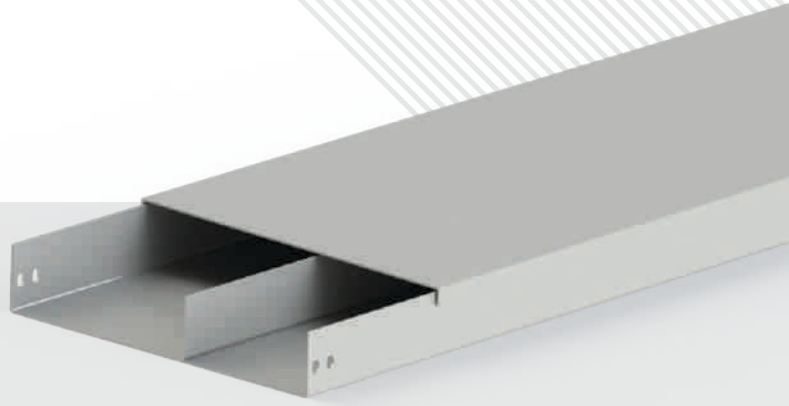
- Fastest system to install
- Flawless Finish
- Good looks in interior points too
- Open structure maximizes ventilation, decreases collection of debris, and simplifies maintenance work
- Features a unique, patented safety edge to prevent injuries and damage to cable sheathing.

Raw Material	Mild Steel Wire , Stainless Steel Wire 202,304,316
Finished	Hot Dip Galvanized (As per IS), Electroplated, Powder Coated, SS Self, SS Mirror

Note : Above all sizes are standard, Tailor-made sizes can be manufactured

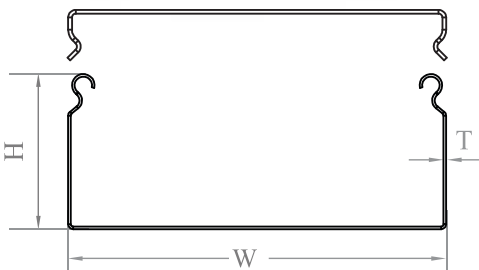
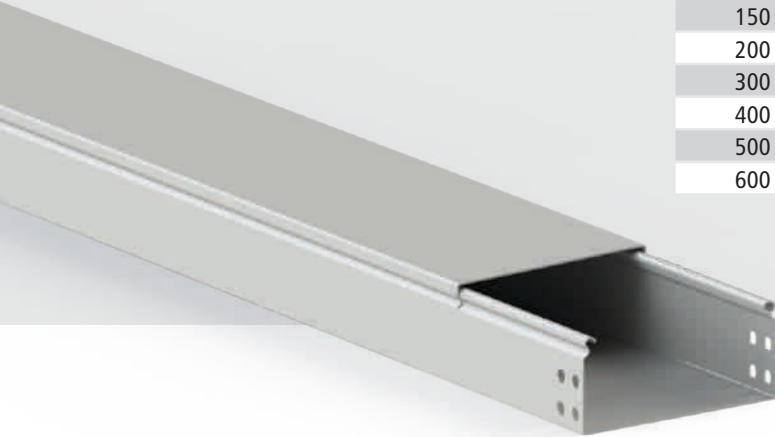
CABLE TRAY

Race way cable trunking and accessories are offered in a comprehensive range. With Pre-GI, Hot Dip Galvanized, and Powder Coated are the various finishes produced in our factories. Race way are designed to meet most requirements of cable and electrical wire installations and comply to local and international standards of fabrication and finishing. We are offered Race way with Single, Double and Triple Compartments and with required accessories for easy to install. We offered Race Way Trucking System with Heavy duty return flange with flapped type cover. Race Way are commonly used in Industry, Machine Manufacturer, Commercial and Residential Buildings.



Product Range :

Width (W) mm	Height (H) mm	Thickness (T) mm	Length (L) mm
50	25/50/75/100	1.2/1.5/1.6/2	2500/3000
100			
150			
200			
300			
400	50/75/100	1.5/1.6/2/2.5	
500			
600			



Features :

- | Easy Installation
- | Corrosion Resistance
- | Rigid Structure
- | High Capacity
- | High Strength
- | Superior quality
- | Use of vice versa for different kind of Power and Control Cables

Raw Material

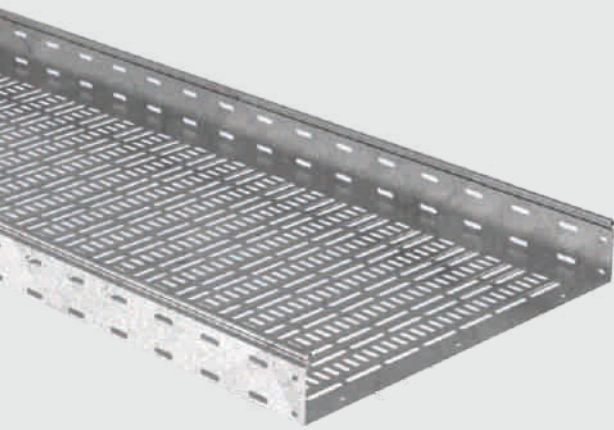
Mild Steel, Pre-Galvanized

Finished

Hot Dip Galvanized (As per IS), Pre-Galvanized, Powder Coated

Note : Above all sizes are standard, Tailor-made sizes can be manufactured

EMBOSSED PERFORATED CABLE TRAY



Product Range :

Width (W) mm	Height (H) mm	Thickness (T) mm	Length (L) mm
100	35/50/80	1 / 1.2 / 1.5	3000
150			
200			
300			
400			
500			

Raw Material	Mild Steel, Pre-Galvanized
Finished	Hot Dip Galvanized (As per IS), Pre-Galvanized, Powder Coated

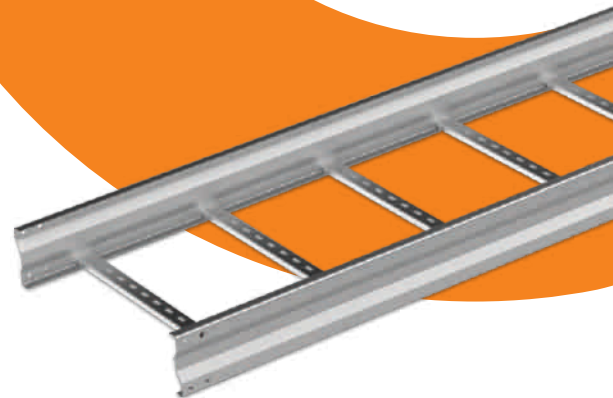
Jetcotech are offered an innovative product range of Cable Management system, we offered Embossed Perforated Cable Tray with Heavy Duty Return Flange made from minimum Thickness, With Pre-GI, Hot Dip Galvanized, and Powder Coated are the various finishes produced in our factories. Embossed Cable Tray are designed to meet most requirements of cable and electrical wire installations and comply to local and international standards of fabrication and finishing.

HEAVY DUTY LADDER CABLE TRAY

We added an innovative product range of Cable Management system, we manufacture Heavy Duty Ladder Cable Tray with Heavy Duty Rung, Runner for achieve High Strength with Hot Dip Galvanized Finished. Heavy Duty Ladder Cable Tray are designed to meet most requirements of heavy cables straight Run.

Product Range :

Width (W) mm	Height (H) mm	Thickness (T) mm	Length (L) mm
300	175	2.5 / 3	5000/6000/ 8000/10000
450			
600			
750			
800			
900			
1000			
1200			

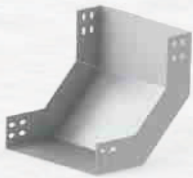


CABLE TRAY ACCESSORIES

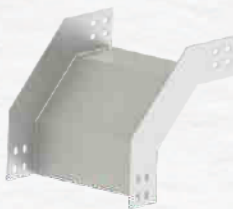
PERFORATED TRAY ACCESSORIES



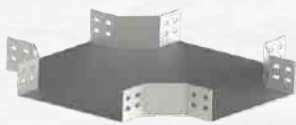
L BEND



INSIDE BEND



OUTSIDE BEND



CROSS BEND

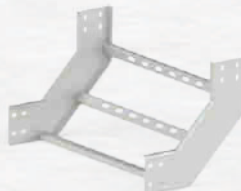


TEE BEND

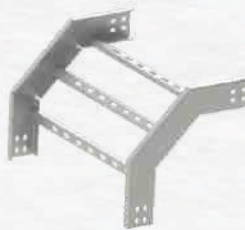
LADDER TRAY ACCESSORIES



L BEND



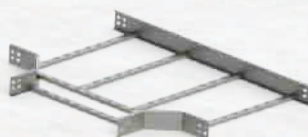
INSIDE BEND



OUTSIDE BEND



CROSS BEND

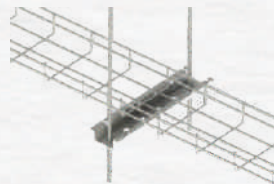


TEE BEND

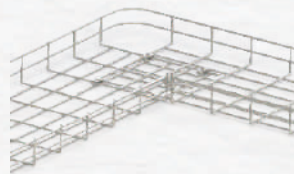
WIREMESH TRAY ACCESSORIES



COUPLER



CEILING MOUNTING BRACKET



L BEND



CROSS BEND



TEE BEND

CABLE TRAY SUPPORT ACCESSORIES



COUPLER PLATE



COVER



MOUNTING BRACKET



FASTNER



JUNCTION BOX

CABLE
TRAY

FRP PERFORATED
CABLE TRAY

Product Range :

Width (W) mm	Height (H) mm	Thickness (T) mm	Length (L) mm
50	22/25/50	3/4	2500/3000
75	25/30		
100	30/50		
150	40/50/75		
200	50/75		
300			
400			
500			
600			



Features :

- CORROSION RESISTANCE

LOW MAINTANANCE

FIRE RETARDANT

HIGH STRENGTH TO WEIGHT RATIO

ELECTRICAL AND THERMELLY NOT CONDUCT
- LOW INSTALL COST

LONG SERVICE LIFE

UV PROTECTION

Raw Material	ISOFR, VEFR, PHENOLIC,
Finished	AS PER IS

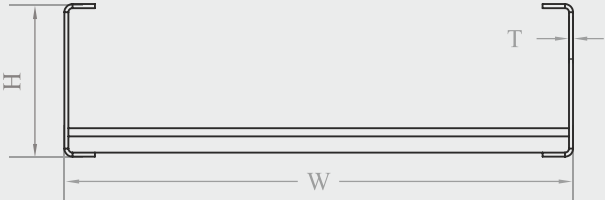
Note : Above all sizes are standard

CABLE
TRAY

FRP LADDER
CABLE TRAY

Product Range :

Width (W) mm	Height (H) mm	Thickness (T) mm	Length (L) mm
100	50/75/100	3/5/6	3000
150			
200			
250			
300			
350			
400	50/75/ 100/150		
500			
600			
800			
1000			
1200			



Features :

- CORROSION RESISTANCE

LOW MAINTANANCE

FIRE RETARDANT

HIGH STRENGTH TO WEIGHT RATIO

ELECTRICAL AND THERMELLY NOT CONDUCT
- LOW INSTALL COST

LONG SERVICE LIFE

UV PROTECTION

Raw Material	ISOFR, VEFR, PHENOLIC,
Finished	AS PER IS

Note : Above all sizes are standard, Tailor-made sizes can be manufactured

FRP CABLE TRAY ACCESSORIES

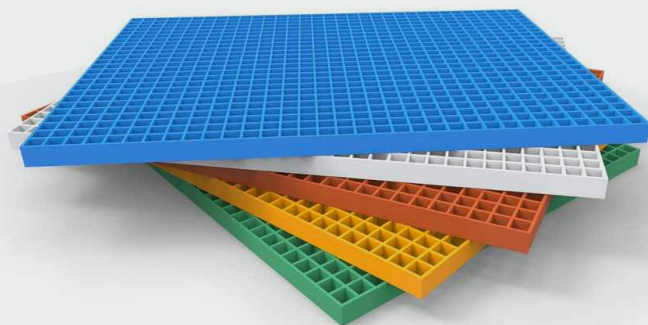
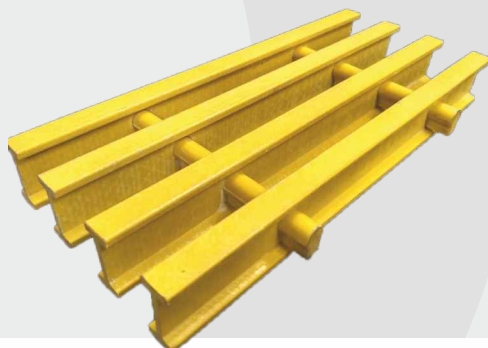
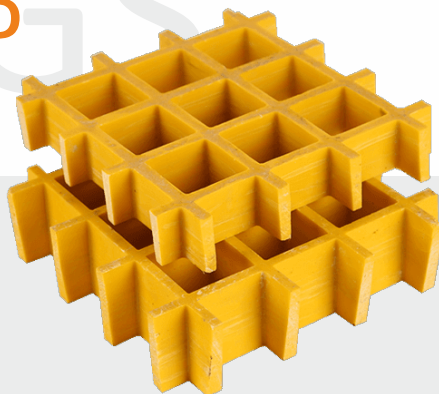
			
FRP LCT OUTSIDE BEND	FRP LCT INSIDE BEND	FRP LCT TEE BEND	FRP LCT 4 WAY
			
FRP LCT 90 DEGREE BEND	FRP LCT 45 DEGREE BEND	FRP LCT OUTSIDE 45 DEGREE BEND	FRP LCT INSIDE 45 DEGREE BEND
			
FRP LCT CENTRE REDUCER	FRP COUPLER PLATE	FRP PCT INSIDE BEND	FRP PCT OUTSIDE BEND
			
FRP PCT TEE BEND	FRP PCT 4 WAY	FRP PCT HORIZONTAL 90 DEGREE BEND	FRP PCT HORIZONTAL 45 DEGREE BEND
			
FRP PCT VERTICAL 45 DEGREE OUTSIDE BEND	FRP PCT VERTICAL 45 DEGREE INSIDE BEND	COVER HOLDS DOWN CLAMP	CABLE TRAY HOLD DOWN CLAMP

GRATINGS

FRP MOULDED & PULTRUDED GRATINGS

Product Range :

THICKNESS mm	MESH SIZE mm	PANEL SIZE mm
25	38*38	1220*3660
30		
33		
40		



Features :

- CORROSION RESISTANCE
- LOW MAINTANANCE
- FIRE RETARDANT
- HIGH STRENGTH TO WEIGHT RATIO
- ELECTRICAL AND THERMELLY NOT CONDUCT
- LOW INSTALL COST
- LONG SERVICE LIFE
- UV PROTECTION
- SLIP RESISTANCE

Raw Material	ISOFR, VEFR, PHENOLIC,
Finished	AS PER IS

Note : Above all sizes are standard

OCTAGONAL POLE

Jetcotech designs and manufactures a wide range of octagonal poles, for primary use as street lighting poles. Products are fabricated using premium quality raw material and manufacture standard size & customized to client's specification. Jetcotech octagonal poles come with large range of brackets solution for lights fittings & provide solution with ladder and platform also for maintenance purpose.

Jetcotech uses high-strength sheet steel as per IS standards and can produce single-piece poles up to a length of 13 meters. The two shell halves are welded together with advanced systems and with automatic SAW Welding Machin. The octagonal poles shafts are continuously tapered with single longitudinal welding & no circumferential weld. The manufacturing facilities available allows production of single section of length up to 13 meters, which can be galvanized through hot dip process at the company's in-house sophisticated galvanizing facilities as per IS, and guarantees great corrosion resistance.



Product Code.	Height Mtr.	Top A/F(mm)	Bottom A/F(mm)	Thickness (mm)	Base Plate			Foundation Bolt
					Size	Thick.	PCD	
JEOP301	3	60	130	3	200X200	12	200	M16 X 400 mm
JEOP302	3	70	130	3	200X200	12	200	M16 X 400 mm
JEOP401	4	60	130	3	200X200	12	200	M16 X 400 mm
JEOP402	4	70	130	3	200X200	12	200	M16 X 400 mm
JEOP501	5	60	130	3	200X200	12	200	M16 X 500 mm
JEOP502	5	70	130	3	200X200	12	200	M16 X 500 mm
JEOP601	6	60	130	3	220X220	12	220	M16 X 500 mm
JEOP602	6	70	135	3	220X220	12	220	M16 X 500 mm
JEOP701	7	60	130	3	220X220	12	220	M16 X 500 mm
JEOP702	7	70	135	3	220X220	12	220	M16 X 500 mm
JEOP801	8	70	135	3	225X225	16	220	M20 X 600 mm
JEOP802	8	70	155	3	225X225	16	220	M20 X 600 mm
JEOP901	9	70	155	3	260X260	16	250	M24 X 600 mm
JEOP902	9	70	175	3	260X260	16	250	M24 X 600 mm
JEOP1001	10	70	155	3	260X260	16	250	M24 X 600 mm
JEOP1002	10	70	175	3	275X275	16	275	M24 X 600 mm
JEOP1101	11	90	210	3	300X300	20	300	M24 X 700 mm
JEOP1201	12	90	210	3	300X300	20	300	M24 X 700 mm

Thickness : Customised Thickness Available as per Requirements

Finished : Hot Dip Galvanized (As per IS), PU Painted, Powder Coated

Note : Above all sizes are standard, Tailor-made sizes can be manufactured

 www.jetcotech.in

In Jetcotech's extensive range of products, we also offer our esteemed clients a broad array of Conical Poles. These poles are manufactured using quality assured steel that is procured from trusted vendors of the market with the help of latest technology. Further, these Conical Poles are available in various specifications as per our client's requirements with utmost quality.

Conical poles are also continuously tapered poles with circular cross section at both the ends. These are manufactured by press forming sheets under press brakes. Unlike polygonal cross section poles, conical poles give a much better and smoother appearance. They are mainly used for lighting, traffic light & CCTV applications on highways, streets, residential complexes, parks etc.

CONICAL POLE

Product Code.	Height Mtr.	Top A/F(mm)	Bottom A/F(mm)	Thickness (mm)	Base Plate			Foundation Bolt
					Size	Thick.	PCD	
JECP301	3	65	110	3	200X200	12	200	M16 X 400 mm
JECP302	3	70	115	3	200X200	12	200	M16 X 400 mm
JECP401	4	65	125	3	200X200	12	200	M16 X 400 mm
JECP402	4	70	130	3	200X200	12	200	M16 X 400 mm
JECP501	5	65	140	3	225X225	12	225	M16 X 500 mm
JECP502	5	70	145	3	225X225	12	225	M16 X 500 mm
JECP601	6	65	155	3	250X250	12	250	M16 X 500 mm
JECP602	6	70	160	3	250X250	12	250	M16 X 500 mm
JECP701	7	65	170	3	250X250	16	250	M16 X 500 mm
JECP702	7	70	175	3	250X250	16	250	M16 X 500 mm
JECP801	8	65	185	3	275X275	16	275	M20 X 600 mm
JECP802	8	70	190	3	275X275	16	275	M20 X 600 mm
JECP901	9	65	200	3	300X300	20	300	M24 X 600 mm
JECP902	9	70	205	3	300X300	20	300	M24 X 600 mm
JECP1001	10	70	220	3	320X320	20	320	M24 X 750 mm
JECP1002	10	80	230	3	320X320	20	320	M24 X 750 mm
JECP1101	11	70	235	3	320X320	20	320	M24 X 750 mm
JECP1201	12	70	250	3	350X350	20	350	M24 X 750 mm



- Thickness :** Customised Thickness Available as per Requirements
- Finished :** Hot Dip Galvanized (As per IS), PU Painted, Powder Coated

Note : Above all sizes are standard, Tailor-made sizes can be manufactured

POLE

FRP POLES

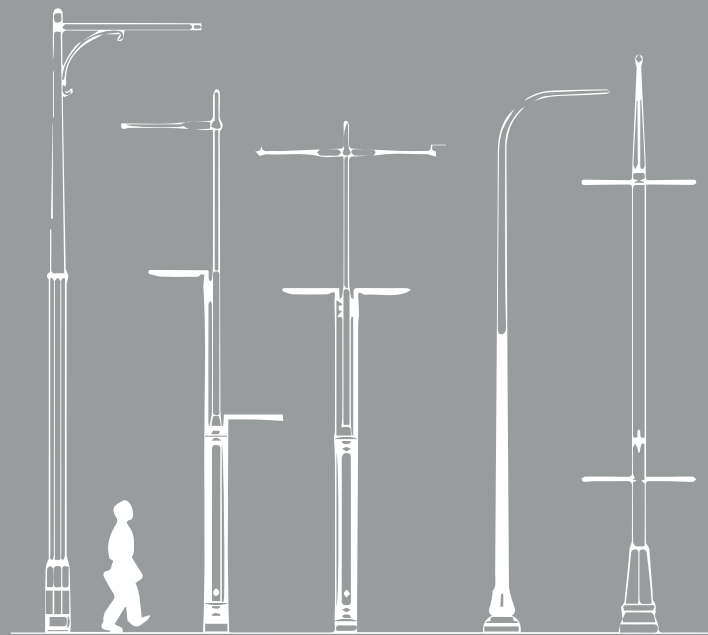


Features :

- Longevity
- Maintenance free
- Versatility
- Light weight & easy installation
- Corrosion resistant
- Economical
- High bending strength

Application :

- Road Lighting
- Coastal Areas
- Solar Lighting
- Discharge Areas
- Jetty Lighting
- Chemical Plants



We Design, Manufacture and Deliver FRP Poles used for Street Lighting Poles including Decorative Poles of various kinds having world class design. These can be used on Street for Street Lights and also in various tourist spots for Lighting.

ISOFR: Isophthalic polyester resin formulation with a low flame spread rating of 25 or less designed for applications where there is moderate exposure to corrosive elements.

VEFR: Vinyl ester resin system with a flame spread of 25 or less for dependable resistance to both acidic and alkaline environments.

PHENOLIC: A Coast Guard approved flame-resistant phenolic resin with an extremely low flame spread of 10 and a smoke index of 400 (unpainted); flame spread of 15 and a smoke index of 450 (painted, UV coating) - designed primarily for the offshore industry

HIGH MAST

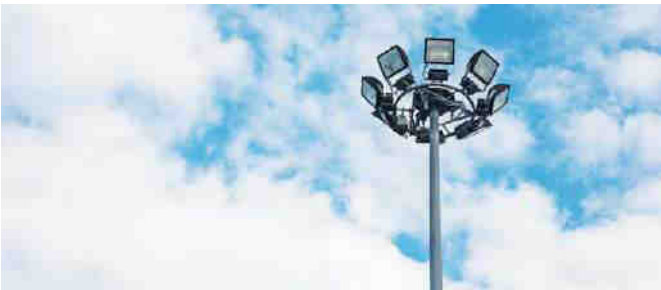
POLE & ACCESSORIES

High mast lighting is preferred over conventional lighting this day. Especially where large areas are to be illuminated. This system eliminates the need for numerous lighting columns which, under certain circumstances, can pose hazardous to movement. This is possible because the high mast lighting system achieves very large space to height ratios.

High-mast lighting is ideal for industrial or commercial areas, docks, airports, flyovers, stations, car parks and even some hazardous areas. All of these require the best possible lighting with minimum interference from the installation itself combined with ease of maintenance.

Jetcotech high mast is provided with accessories as per customer requirements. Generally, these include a raising and lowering system, trailing cable, power tool, feeder pillar for automatic switching operation of luminaries, lighting finial, and aviation obstruction warning light.

Code	Height	Bottom	Top	Sheet Thickness			Base Plate-PCD	Foundation Bolts			Luminary Capacity
				T	M	B		Dia	Length	Qty.	
JEHM1201	12	360	150		3		520x20-445	M24*700X6			4, 6, 8
JEHM1202	12	360	105		3		520x20-445	M24*700X6			4, 6, 8
JEHM1203	12	310	105	3		3	445x20-380	M24*700X6			4, 6, 8
JEHM1204	12	360	150	3		3	520x20-445	M24*700X6			4, 6, 8
JEHM1205	12	360	105	3		3	520x20-445	M24*700X6			4, 6, 8
JEHM1251	12.5	360	150	3		3	520x25-445	M24*700X6			4, 6, 8
JEHM1252	12.5	360	105	3		3	520x25-445	M24*700X6			4, 6, 8
JEHM1601	16	360	150	3		3	520x25-445	M30*850X8			4, 6, 8, 10
JEHM1602	16	410	150	3		3	630X25-530	M30*850X8			4, 6, 8, 10
JEHM1603	16	410	150	3		4	630X25-530	M30*850X8			4, 6, 8, 11
JEHM1604	16	460	150	3		4	670x25-580	M30*850X8			4, 6, 8, 10
JEHM2001	20	410	150	3		4	630X30-580	M30*850X8			6, 8, 10, 12
JEHM2002	20	460	150	3		3	670X30-580	M30*850X8			6, 8, 10, 12
JEHM2003	20	460	150	3		4	670X30-580	M30*850X8			6, 8, 10, 12
JEHM2501	25	460	150	3	4	5	670X30-580	M30*1000X12			6, 8, 10, 12
JEHM2502	25	540	150	3	4	5	730X30-650	M30*1000X12			6, 8, 10, 12
JEHM2503	25	540	150	4	4	5	730X30-650	M30*1000X12			6, 8, 10, 12
JEHM3001	30	540	150	3	4	5	750X30-650	M30*1000X12			8, 10, 12, 16
JEHM3002	30	540	150	4	4	5	750X30-650	M30*1000X12			8, 10, 12, 16
JEHM3003	30	610	200	3	4	5	840x30-740	M30*1000X12			8, 10, 12, 16, 20
JEHM3004	30	610	200	4	4	5	840x30-740	M30*1000X12			8, 10, 12, 16, 20, 24
JEHM3005	30	610	200	4	5	6	840x30-740	M30*1000X12			8, 10, 12, 16, 20, 24
JEHM4001	40	740	200	4	5-6	8	950x40-850	M30*1000X16			10, 12, 16, 20, 24



We at Jetcotech offer Flag Mast Pole under mast pole range. A Flag Mast from Jetcotech is engineered and manufactured by dedicated design team to fulfill customer requirements, a dedicated technical team for R & D as well as maintaining high quality of products. We are a reliable organization engaged in manufacturing a qualitative range of poles. Flag Mast Pole Uses for National Flag, Holly Flag & Organization Flag.



Code	Height	Bottom A/F	Top	Sheet Thickness			Base Plate-PCD	Foundation Bolts		
				T	M	B		Dia	Length	Qty.
JEFM1801	18	460	150	3		4	670x30-580	M30*850X8		
JEFM2001	20	460	150	3		4	670x30-580	M30*850X8		
JEFM2501	25	540	150	3	4	5	730X30-650	M30*1000X12		
JEFM3001	30	540	200	3	4	5	750X30-650	M30*1000X12		
JEFM3501	35	610	150	3	4-5	6	850X30-750	M30*1000X16		
JEFM4001	40	740	200	4	5-6	8	950x40-850	M30*1000X16		

FLAG MAST POLE & ACCESSORIES



STADIUM MAST POLE & ACCESSORIES

We at Jetcotech manufacture and supply Mast Pole for Stadium Lighting. We supply stadium mast with ladder and platform arrangements or R&L trolley system for maintenance purpose. We offer stadium mast with customized specification as per client's requirements. "our motto is lighting your sport and bright future"

Code	Height	Bottom A/F	Top	Sheet Thickness			Base Plate-PCD	Foundation Bolts			Luminary Capacity
				T	M	B		Dia	Length	Qty.	
JESM1501	15	460	150	3	3	3	670X25-580	M30*850X8			12, 24
JESM1601	16	460	150	3	3	4	670X25-580	M30*850X8			12, 24
JESM2001	20	460	150	3	4	4	670X30-580	M30*850X8			12, 24
JESM2501	25	540	150	3	4-4	5	750X30-650	M30*1000X12			12, 24, 48
JESM2502	25	610	200	4	4-5	6	830X30-730	M30*1000X12			24, 48
JESM3001	30	540	150	4	4-5	6	820X30-680	M30*1000X12			24, 48
JESM3002	30	610	200	4	5-6	6	830X40-730	M30*1000X16			24, 48



Note : Above all sizes are standard, Tailor-made sizes can be manufactured



Our Valuable Clients



Its make **JETCO** — more powerful.



JETCOTECH ENGINEERING LLP

Opp. Old Pipli Bus-Station, Jetpar Road,
Morbi-363642, Gujarat, India

m | +91 75750 07163

e | sales@jetcotech.in

 www.jetcotech.in