

MILAN

TEXTILES

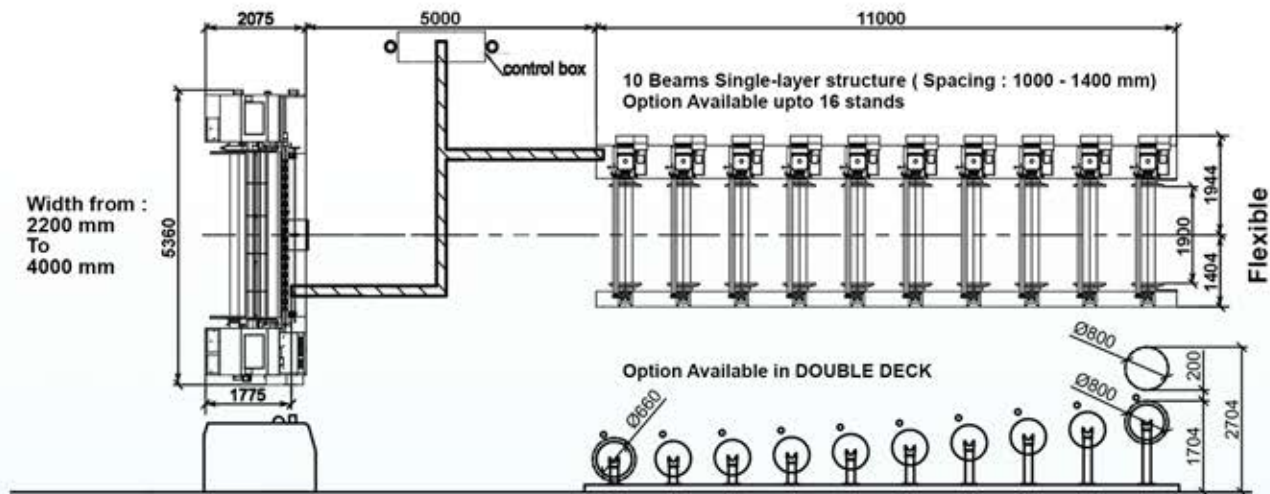
MACHINERY DIVISION

ML - 416



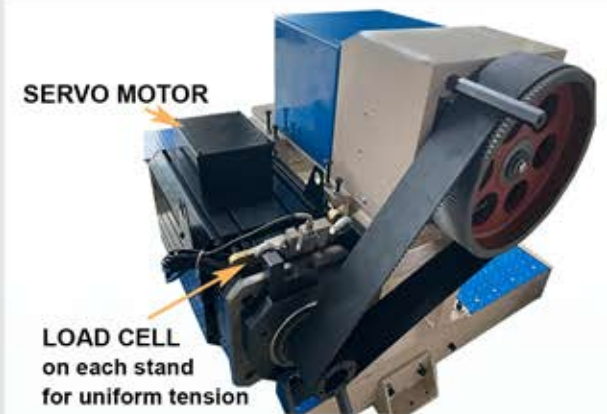
Lowest Production cost of USD 0.16/kg to produce Weaver's beam
Best Price Performance ratio with monthly prod. of 70 +/- 10 tons

ML - 416 SERVO BEAMING MACHINE / ASSEMBLY WINDER



TECHNICAL SPECIFICATIONS OF ML - 416 SERVO BEAMING MACHINE / ASSEMBLY WINDER

Speed of Warping Beam	Upto 300 mpm according to Yarn & number of beam in use
No of warping beams	8-16 stands
Winding Tension	40 kg-1200 kg
Working width	1200 - 4000 mm
Weaver beam Dia	800, 920, 1000 mm
Expanding Reed Adjustment type	Electric
Power Capacity	120 kVA
Total length of machine	17000-21000 mm
Up-Down movement of weaving beam	By Hydraulic Cylinder
Winding Tension control mode	Tension feedback for AC vector drive
Expanding Godet Roller	Upto 3600 mm width
Display type ,PLC ,Inverter	Touch operated Display - INVT
Unwinding tension Control	Auto feedback control through Servo motor- 5.5 -7.5 kW & Load cell
Taper tension control	Auto feedback control through Freq conversion motor- 15 -18.5 kW & Load cell



CONTROL PANEL
with INVT Servo System



SCREEN
Showing Uniform Tension from start to end of Beam



Mob : +91 9374720485

E-mail : machines.milan@gmail.com

Add : "Global Point", P.No.: 224/5C, Khatodara, Ring Rd, Surat-395002 (Guj) INDIA

Ph : 81401 44000, 81402 44000

Web : www.milantextile.com

